

YUXIN HE

CHINA

K1810789

Kingston School of Art  
Level 6 Fashion BA (Hons)

k1810789@kingston.ac.uk

huxx0000@163.com

+86 18683966060

1 + 1 = N

COVER / COMBINE

The project is based on sustainability. Consider increasing the utilization rate of individual items to reduce garment waste. In my design, most garments can be worn in a variety of ways, and most independent items can also be rematched with others. In order to promote the sustainable development of fashion.

In everyone's heart, there is always some part they don't want to share with others, even the most intimate partner. Therefore, the content of this project is "COVER" and "COMBINE". "COVER" means hiding some parts of ourself. "COMBINE" means the state of two independent individuals in an intimate relationship.



# MOODBOARD

Grey Veiled Faces -Arlene Morris



The Great Wall Of China  
-Marina Abramovic



I am hiding me.



Relation In Space, 1976  
-Marina Abramovic



Second Skin -Esmay Wagemans

Hiding Figure: Surreal Sculptures  
-Daniel Arsham

1 + 1 = N  
COVER / COMBINE



# FABRIC & COLOUR

Kunst (2019)  
-Hanneke van Broekhoven

Grey Veiled Faces -Arlene Morris

Second Skin -Esmay Wagemans

**Fabric 1:**  
15% Nylon  
85% Rayon

**Fabric 2:**  
40% Rayon  
35% Chinlon  
25% Cuprammonium

**Fabric 3:**  
10% Taffeta  
90% Rayon

**Fabric 4:**  
55% Polyester  
45% Cotton

**Fabric 5:**  
10% Taffeta  
90% Rayon

**Fabric 6:**  
55% Polyester  
45% Cotton

First Skin (2018)  
-Jodi Colella

1 + 1 = N

COVER / COMBINE



# RESEARCH

The Great Wall Of China  
-Marina Abramovic



Relation In Space, 1976  
-Marina Abramovic

Flexion -Daniel Arsham



Hiding Figure: Surreal Sculptures  
-Daniel Arsham



the two individual  
met → new one



1 + 1 = N  
COVER / COMBINE



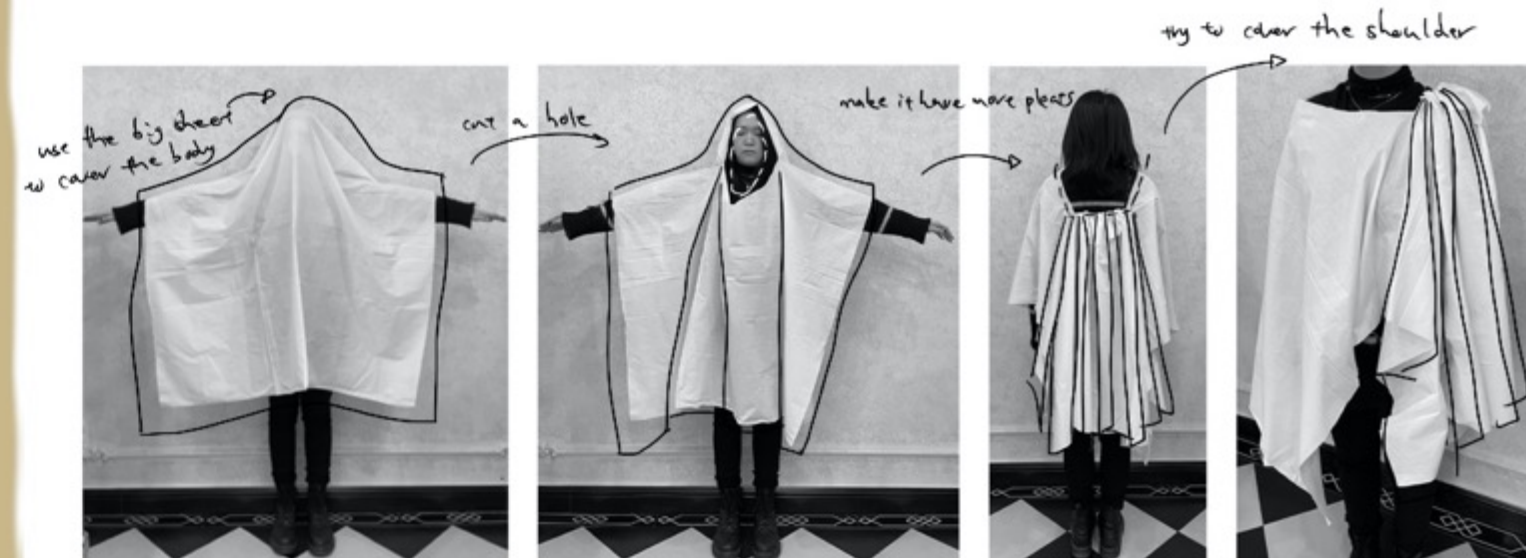
# RESEARCH

Hiding Figure: Surreal Sculptures  
-Daniel Arsham



Relation In Time, 1977  
-Abramovic-Ulay

Hiding Figure: Surreal Sculptures  
-Daniel Arsham



$$1 + 1 = N$$

COVER / COMBINE



# -LOOK 1

## DEVELOPMENT

to lie process

Flexion -Daniel Arsham

use irregular  
front pieces to  
show the two  
individuals  
combine

comes from the hug

(pockets)  
think about  
the function

try to use  
apron  
skirt to  
cover

both  
have  
pockets  
can use

use the coat to cover,  
make the garment  
have more function  
and also can promote  
sustainability

$$1 + 1 = N$$

COVER / COMBINE



## -LOOK 1

### DEVELOPMENT

the other way to wear it

inspired by it.  
try to use the coat to  
cover the front. make  
the coat like a  
suspender skirt.

Hiding Figure: Surreal Sculptures  
-Daniel Arsham

fasten it to the  
back with the belt

Fabric 2:  
40% Rayon  
35% Chinlon  
25% Cuprammonium

Fabric 1:  
15% Nylon  
85% Rayon

1 + 1 = N

COVER / COMBINE



## -LOOK 1

### DEVELOPMENT

the other way to wear it

waistcoat/suspender skirt



think more way to wear and  
also to try make it can show  
more style, through this way to  
increasing the utilization rate  
of garments



$$1 + 1 = N$$

COVER / COMBINE



# CREATIVE SPECIFICATION

## -LOOK 1

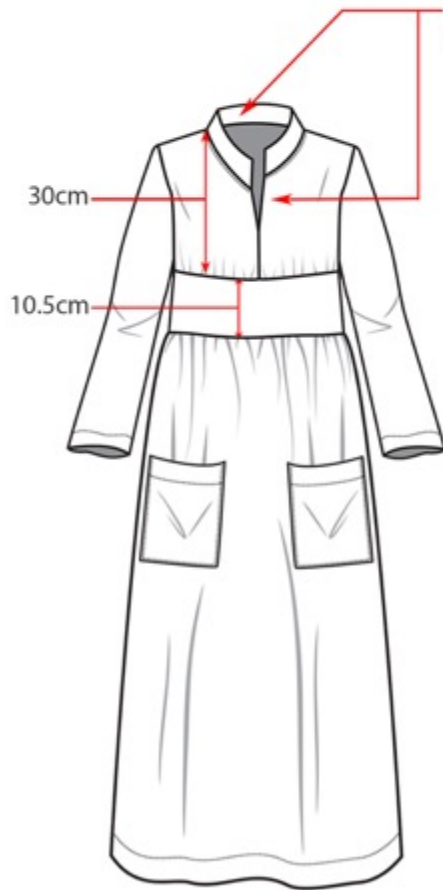
Fabric 4:  
55% Polyester  
45% Cotton

Fabric 3:  
10% Taffeta  
90% Rayon

Fabric 2:  
40% Rayon  
35% Chinlon  
25% Cuprammonium

Fabric 1:  
15% Nylon  
85% Rayon

The collar and front pieces are irregular



There are regular pleats



### Coat measurements:

A03 Across front: 48cm  
A04 Across back: 50cm  
B01 Front length - SNP: 98cm  
B02 Front length - CF: 92cm  
B05 Back length -CB: 107cm  
C04 Neck circumference: 41cm  
C10 Collar leaf edge: 44cm  
C11 Collar point length: 10cm  
C14 Collar depth -CB: 11cm  
D01 Across shoulder: 50cm  
D02 Shoulder length: 17cm

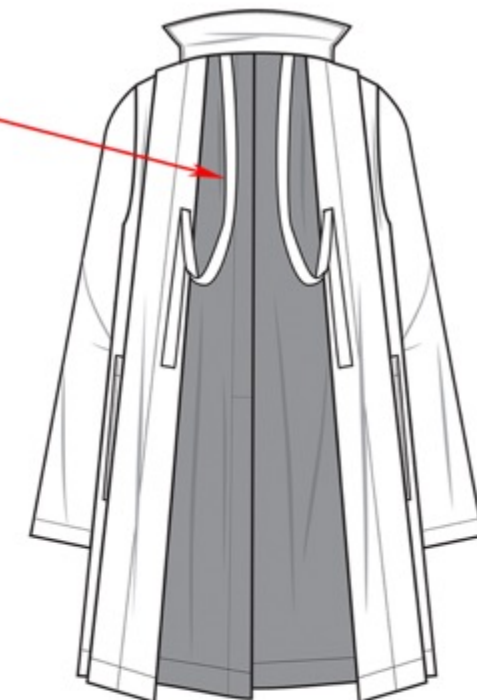
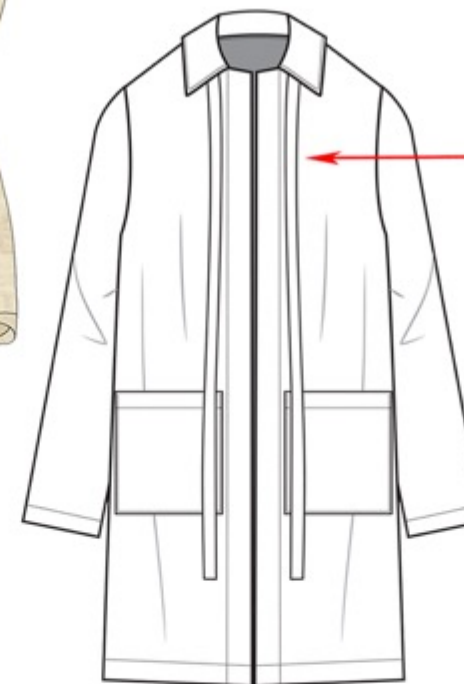
D15 Front armhole curved: 26cm  
D16 Back armhole curved: 27.5cm  
E01 Overarm length: 64cm  
E03 Underarm length: 47cm  
E05 Elbow: 20cm  
F02 Pocket position from CF: 11cm  
F06 Pocket position from hem: 32cm  
F08 Pocket width: 19.5cm  
F09 Pocket depth: 20cm  
G07 CB vent/split length: 51cm  
G12 Hem depth: 3cm

### Dress measurements:

A03 Across front: 38cm  
A04 Across back: 40cm  
A13 Hem extended: 76cm  
B01 Front length - SNP: 120cm  
B02 Front length - CF: 102cm  
B05 Back length -CB: 122cm  
C01 Front neck drop: 21cm  
C03 Neck width: 24cm  
C04 Neck circumference: 62cm  
D01 Across shoulder: 40cm  
D02 Shoulder length: 9cm

D15 Front armhole curved: 24.5cm  
D16 Back armhole curved: 23.5cm  
E01 Overarm length: 55.5cm  
E03 Underarm length: 46cm  
E05 Elbow: 18cm  
E06 Forearm: 15.5cm  
F02 Pocket position from CF: 18cm  
F06 Pocket position from hem: 47cm  
F08 Pocket width: 18cm  
F09 Pocket depth: 20cm  
G12 Hem depth: 2.5cm

There are two belts to help the coat have more ways to wear, both of them are 90cm, one on the outside which are 90cm, and the other one put inside



1 + 1 = N  
COVER / COMBINE

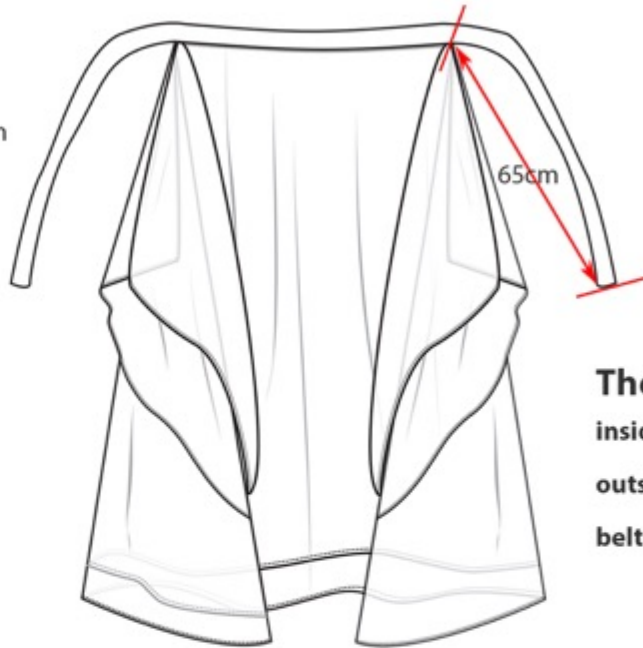
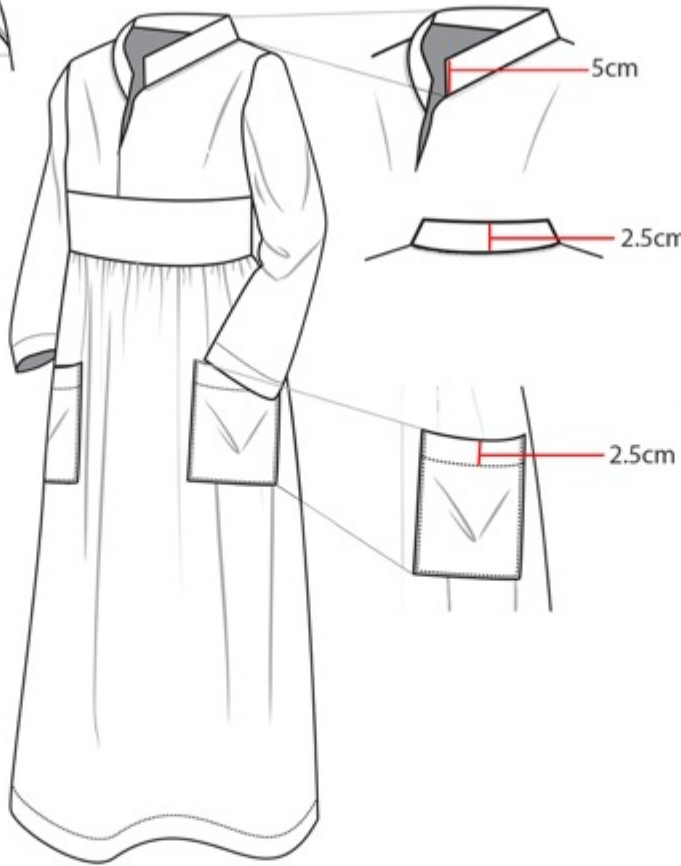


# CREATIVE SPECIFICATION

-LOOK1



The other ways to wear the look 1



**The apron skirt:** there are two layers  
**inside layer:** width: 190cm depth: 73.5cm  
**outside layer:** width: 195.5cm depth: 78.5cm  
**belt long:** 200cm

1 + 1 = N  
COVER / COMBINE



# -LOOK 1

## FINAL LOOK



1 + 1 = N  
COVER / COMBINE



## -LOOK 2

### DEVELOPMENT

Hiding Figure: Surreal Sculptures

-Daniel Arsham

shirt

the technical of the collar



Fabric 6:  
55% Polyester  
45% Cotton

Fabric 4:  
55% Polyester  
45% Cotton

start to think use hug to cover the body.  
so try to use two sleeves on one side, and tied one  
on the front. and then found when it open, the  
sleeve also covered the other one, and it looks much  
better than tie on the front.



1 + 1 = N

COVER / COMBINE



## -LOOK 2

### DEVELOPMENT

skirt

try to use big sheet to cover the body, and then opened a hole to came up some part of the body. add the pleats to make it have more structure.



transform it into skirt and think to use two layers.



at start, wanna use two layers to show cover, and then found the outside piece can be opened are more interesting than before.



**Fabric 6:**  
55% Polyester  
45% Cotton

**Fabric 5:**  
10% Taffeta  
90% Rayon

**Fabric 7:**  
20% Nylon  
40% Wool  
40% Acrylic

1 + 1 = N

COVER / COMBINE

Hiding Figure: Surreal Sculptures

-Daniel Arsham



## -LOOK 2

### FINAL LOOK



1 + 1 = N  
COVER / COMBINE

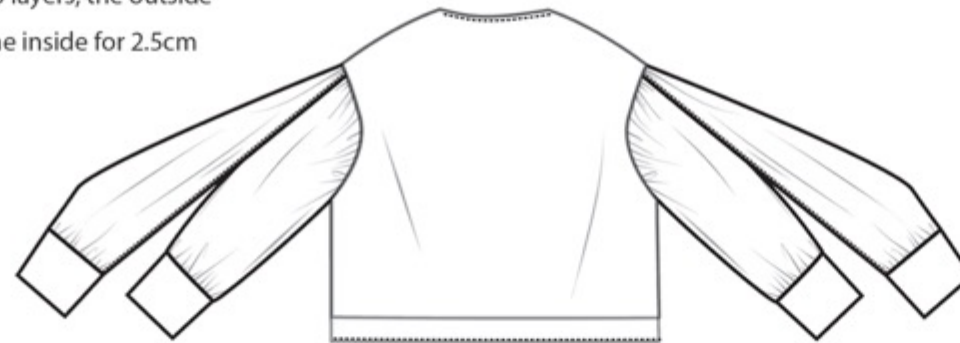


# CREATIVE SPECIFICATION

## -LOOK2



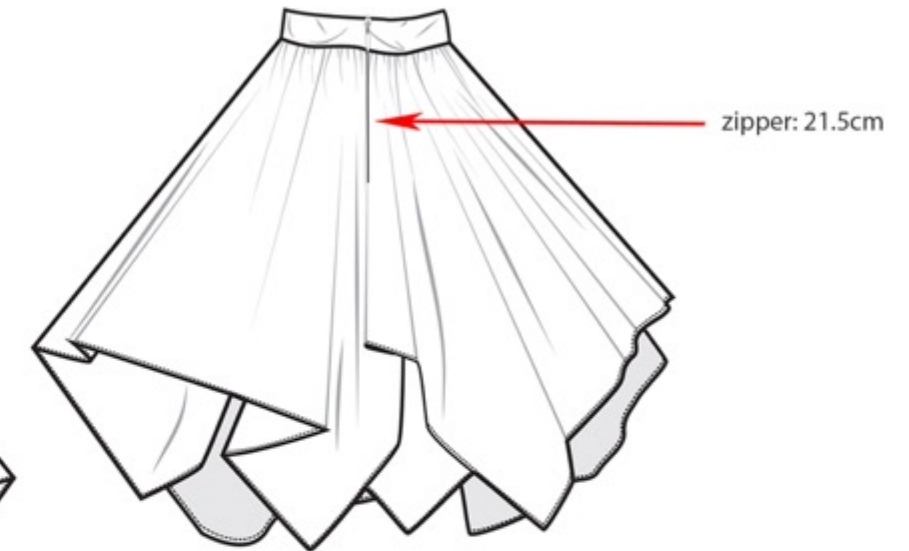
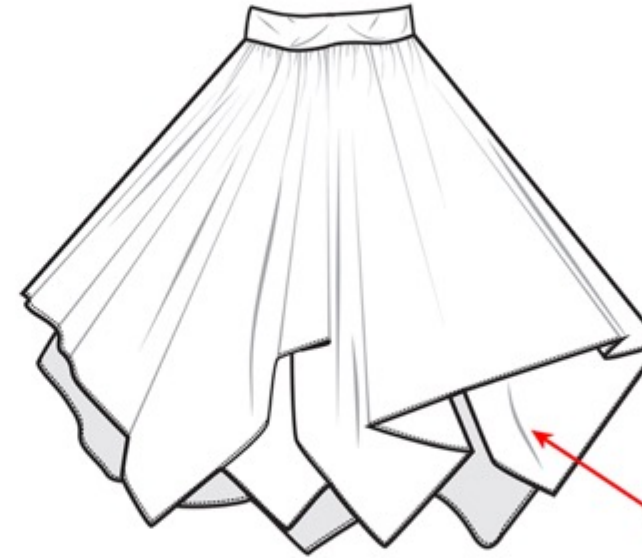
There are two layers, the outside one longer the inside for 2.5cm



### Blazer measurements:

A03 Across front: 49cm  
A04 Across back: 50cm  
B01 Front length - SNP: 53cm  
B02 Front length - CF: 31cm  
B05 Back length - CB: 52cm  
C01 Front neck drop: 6cm  
C03 Neck width: 20cm  
C04 Neck circumference: 73cm  
G12 Hem depth: 1.5cm

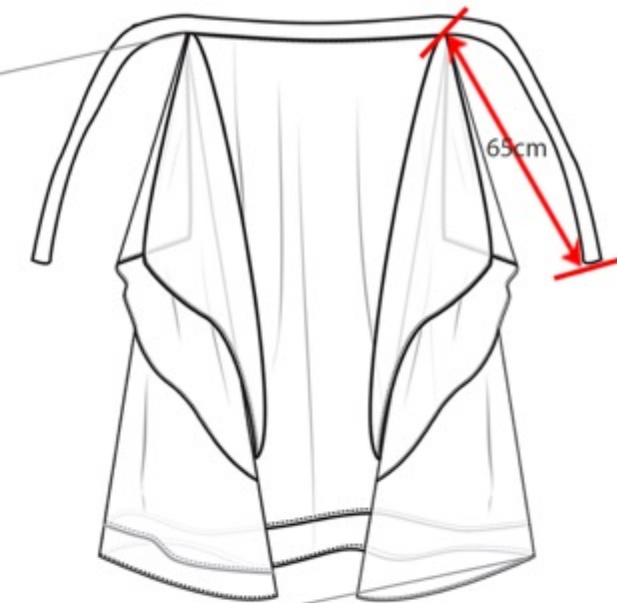
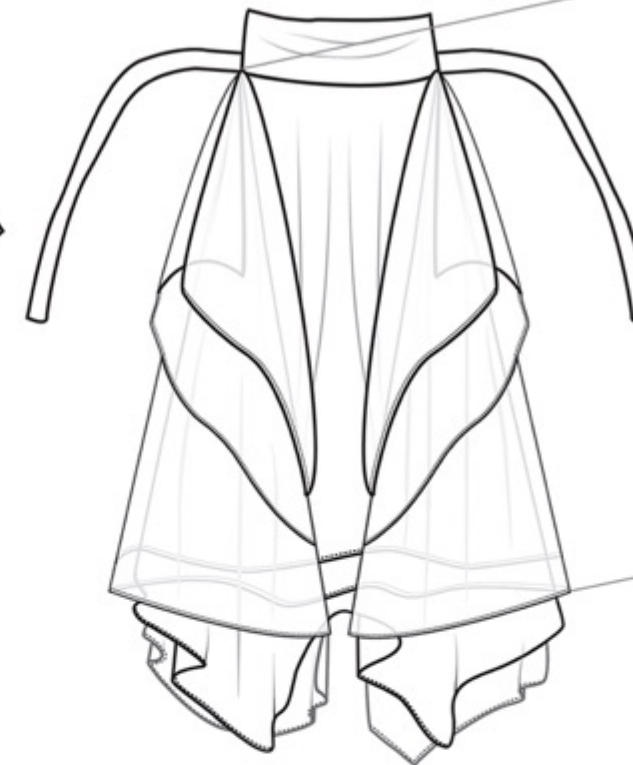
D01 Across shoulder: 52cm  
D02 Shoulder length: 17cm  
D15 Front armhole curved: 26.5cm  
D16 Back armhole curved: 26.5cm  
E01 Overarm length: 47cm  
E03 Underarm length: 37cm  
E05 Elbow: 23cm  
E11 Cuff width: 12cm  
E12 Cuff depth: 8cm



There are two layers, both of them are rectangleles and let pieces naturally droop to get the skirt shape

**outside piece:** width: 140cm depth: 140cm

**inside piece:** width:150cm depth: 150cm



**The apron skirt:** there are two layers

**inside layer:** width: 190cm depth: 73.5cm

**outside layer:** width: 195.5cm depth: 78.5cm

**belt long:** 200cm

1 + 1 = N  
COVER / COMBINE

Fabric 5:  
10% Taffeta  
90% Rayon

Fabric 3:  
10% Taffeta  
90% Rayon

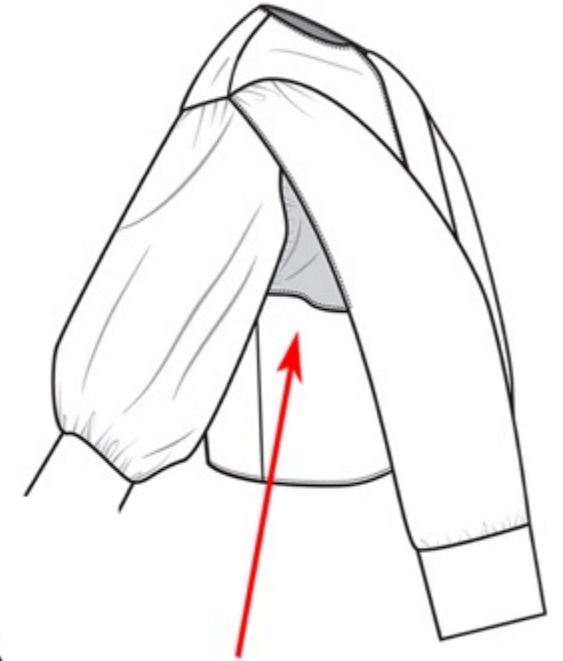
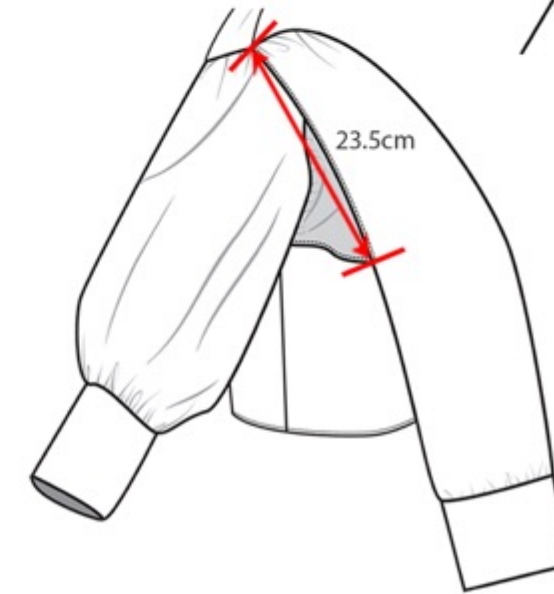
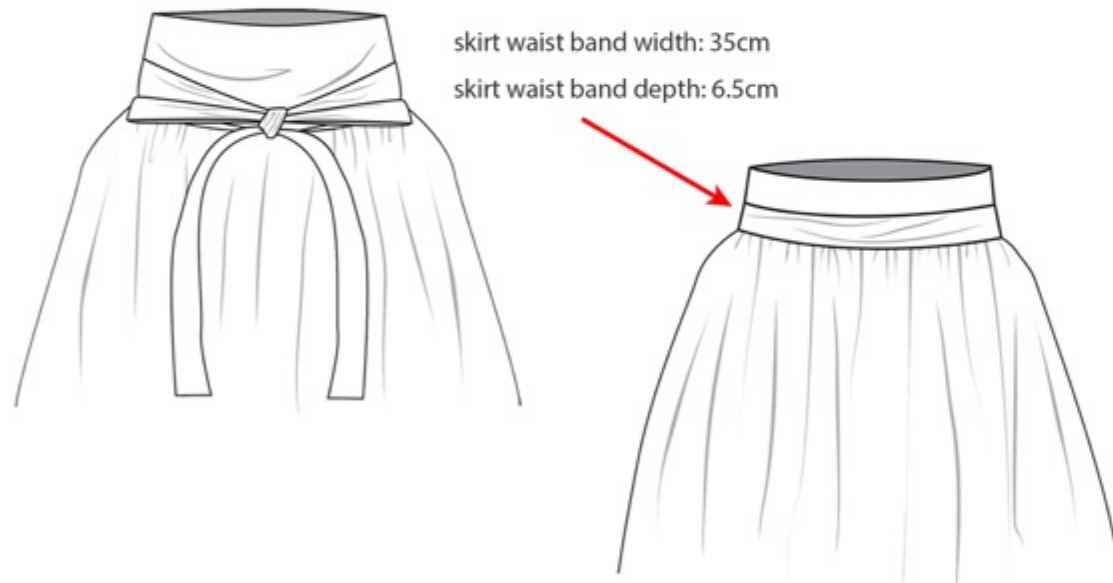
Fabric 6:  
55% Polyester  
45% Cotton

Fabric 4:  
55% Polyester  
45% Cotton



# CREATIVE SPECIFICATION

## -LOOK2



There are two sleeves on one side, the  
top one covers the front armhole

E01 Overarm length: 59cm  
E03 Underarm length: 52.5cm  
E05 Elbow: 17cm  
E11 Cuff width: 13cm  
E12 Cuff depth: 8.5cm



1 + 1 = N  
COVER / COMBINE



# -LOOK 3

## DEVELOPMENT



Relation In Space, 1976  
-Marina Abramovic



Fabric 1:  
15% Nylon  
85% Rayon

Fabric 2:  
40% Rayon  
35% Chinlon  
25% Cuprammonulium

Fabric 3:  
10% Taffeta  
90% Rayon

Fabric 4:  
55% Polyester  
45% Cotton

tolie process



1 + 1 = N

COVER / COMBINE



# CREATIVE SPECIFICATION

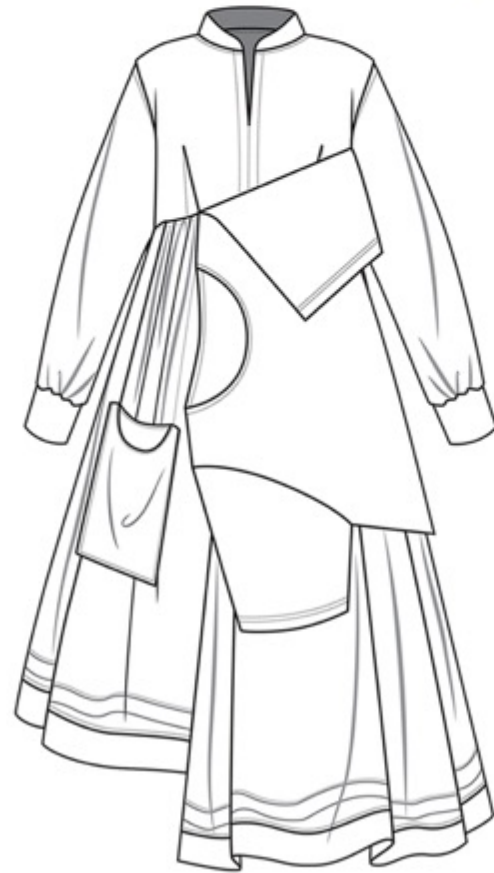
-LOOK3

Fabric 2:  
40% Rayon  
35% Chinlon  
25% Cuprammonuium

Fabric 4:  
55% Polyester  
45% Cotton

Fabric 1:  
15% Nylon  
85% Rayon

Fabric 3:  
10% Taffeta  
90% Rayon



## Dress measurements:

A03 Across front: 36.5cm  
A04 Across back: 42cm  
B01 Front length - SNP: 128cm  
B02 Front length - CF: 104cm  
B05 Back length -CB: 127cm  
C01 Front neck drop: 8cm  
C02 Back neck drop: 4cm  
C03 Neck width: 7.5cm  
C04 Neck circumference: 42cm  
D01 Across shoulder: 42cm  
D02 Shoulder length: 14cm  
D15 Front armhole curved: 24cm  
D16 Back armhole curved: 24cm  
E01 Overarm length: 56.5cm  
E03 Underarm length: 47cm  
E05 Elbow: 18cm  
E11 Cuff width: 12cm  
E12 Cuff depth: 6.5cm



Averaged pleats, each are 2cm

hem: 195cm

hem: 195cm



There are two layers, the inner layer is 5cm shorter than the outer layer



1 + 1 = N  
COVER / COMBINE



# CREATIVE SPECIFICATION

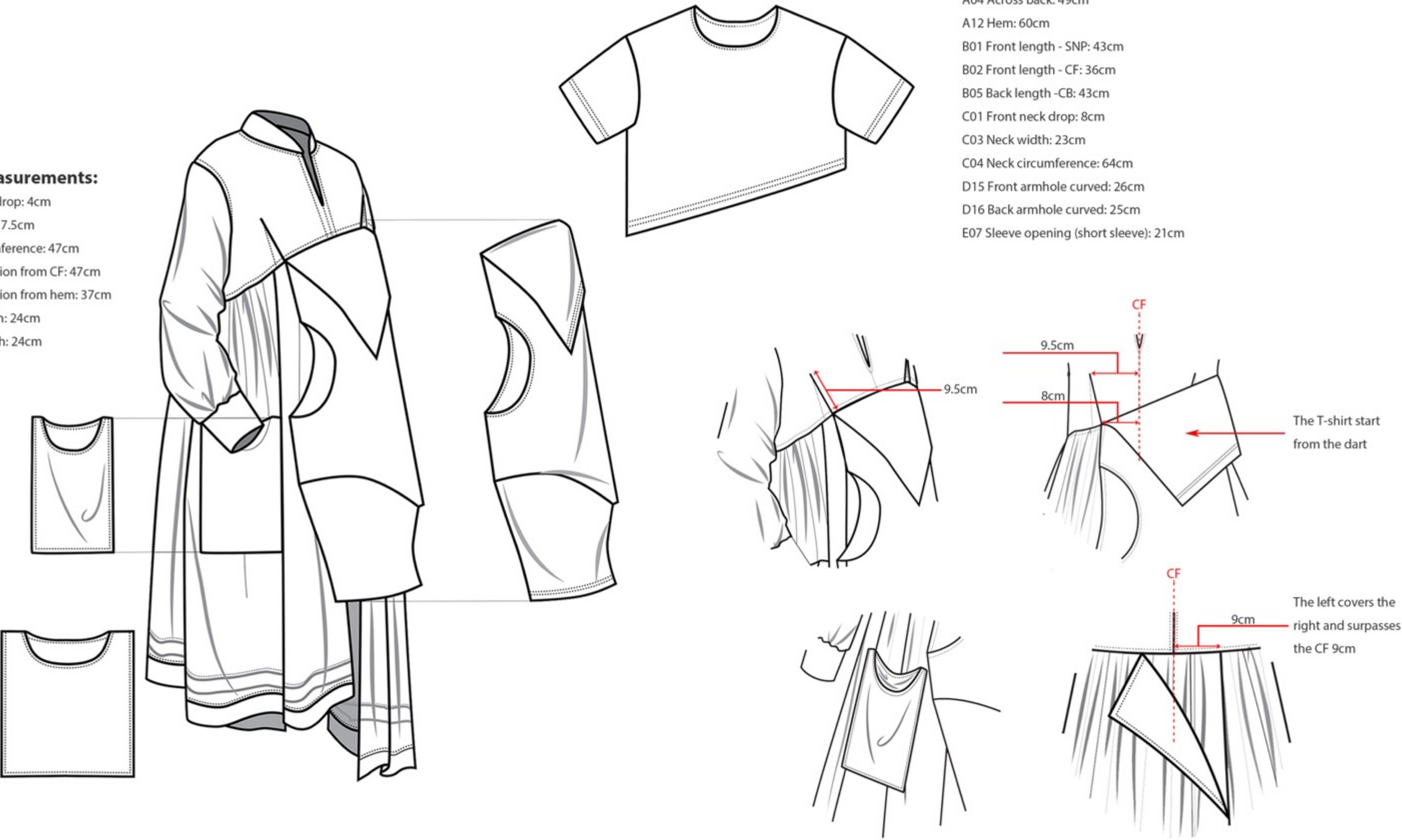
-LOOK3

## Pocket measurements:

- C01 Front neck drop: 4cm
- C03 Neck width: 7.5cm
- C04 Neck circumference: 47cm
- F02 Pocket position from CF: 47cm
- F06 Pocket position from hem: 37cm
- F08 Pocket width: 24cm
- F09 Pocket depth: 24cm

## T-shirt measurements:

- A03 Across front: 45cm
- A04 Across back: 49cm
- A12 Hem: 60cm
- B01 Front length - SNP: 43cm
- B02 Front length - CF: 36cm
- B05 Back length -CB: 43cm
- C01 Front neck drop: 8cm
- C03 Neck width: 23cm
- C04 Neck circumference: 64cm
- D15 Front armhole curved: 26cm
- D16 Back armhole curved: 25cm
- E07 Sleeve opening (short sleeve): 21cm



1 + 1 = N

COVER / COMBINE



# -LOOK 3

FINAL LOOK



1 + 1 = N  
COVER / COMBINE



## -LOOK 4

### DEVELOPMENT

front

use the coat bake to be the front to show the "cover"

to lie process

1 + 1 = N

COVER / COMBINE

Hiding Figure: Surreal Sculptures

Daniel Arsham





## -LOOK 4

### DEVELOPMENT

back

Fabric 6:  
55% Polyester  
45% Cotton

Fabric 5:  
10% Taffeta  
90% Rayon

Fabric 4:  
55% Polyester  
45% Cotton

Fabric 3:  
10% Taffeta  
90% Rayon

to lie process

Hiding Figure: Surreal Sculptures  
-Daniel Arsham

1 + 1 = N

COVER / COMBINE





# -LOOK 4

## FINAL LOOK



1 + 1 = N  
COVER / COMBINE



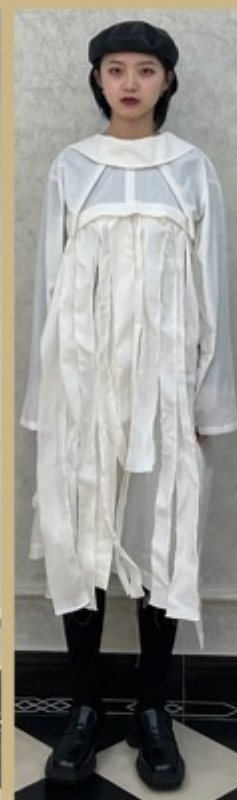
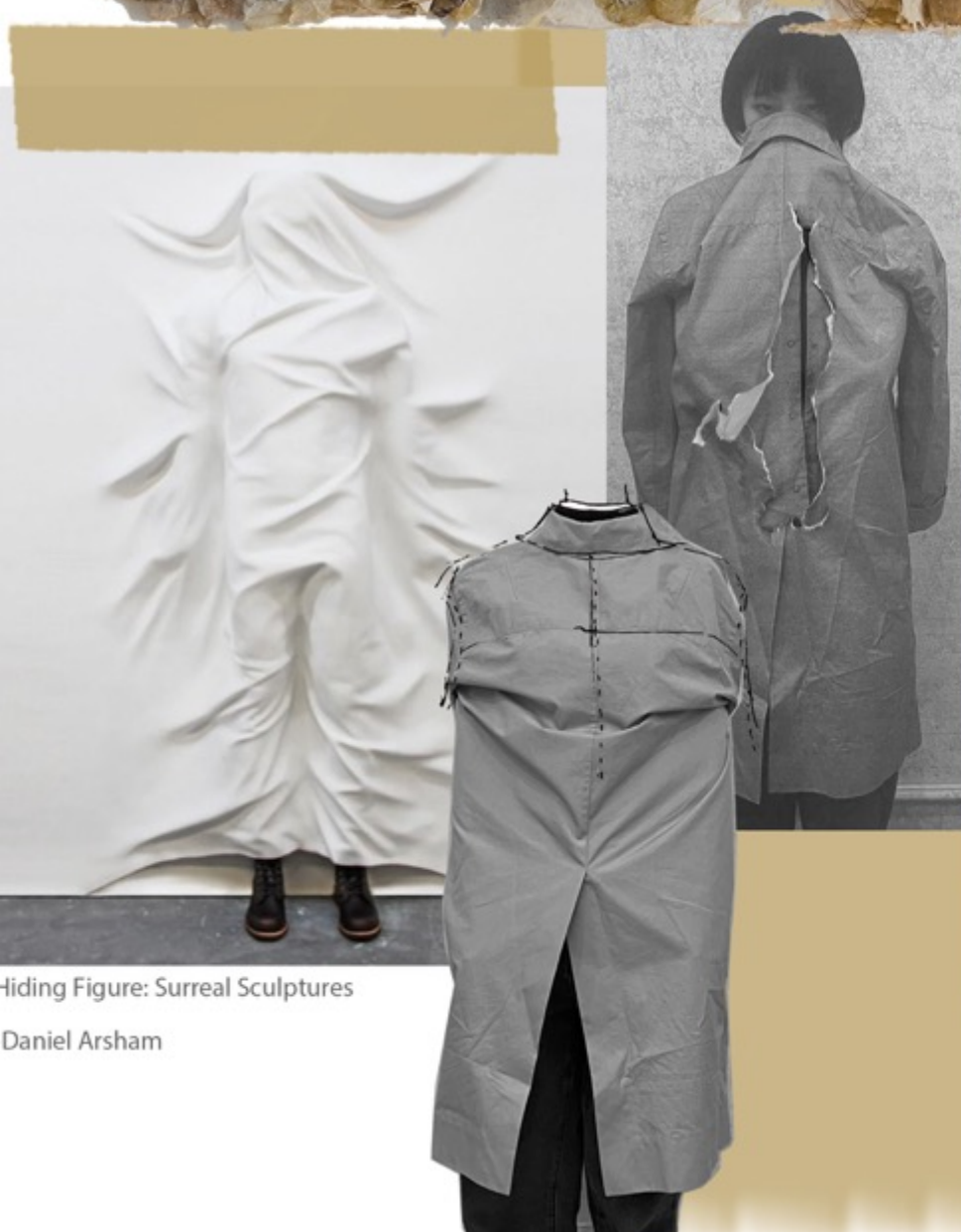
## -LOOK 5

### DEVELOPMENT

Grey Veiled Faces - Arlene Morris



tolie process



Hiding Figure: Surreal Sculptures  
Daniel Arsham

1 + 1 = N  
COVER / COMBINE



# -LOOK 5

## FINAL LOOK



1 + 1 = N  
COVER / COMBINE



## -LOOK 6

### DEVELOPMENT

tolie (test)

try to use the big sheet  
to cover the body



try to use the rest of fabric  
to make the skirt to promote  
sustainability



Flexion -Daniel Arsham

The AR(chi) Tecture  
-Daniel Arsham



1 + 1 = N

COVER / COMBINE



## -LOOK 6

### DEVELOPMENT

Fabric 4:  
55% Polyester  
45% Cotton

Fabric 5:  
10% Taffeta  
90% Rayon

Fabric 6:  
55% Polyester  
45% Cotton

tolie process

shirt 1



shirt 2



the shirt 2 can be wear  
on to front or back



The Great Wall Of China  
-Marina Abramovic



Hiding Figure: Surreal Sculptures  
-Daniel Arsham



$$1 + 1 = N$$

COVER / COMBINE



# -LOOK 6

## FINAL LOOK



1 + 1 = N

COVER / COMBINE





1 + 1 = N

COVER / COMBINE



# LOOKBOOK



1 + 1 = N

COVER / COMBINE