

FROM THE BLUE OF THE SKY

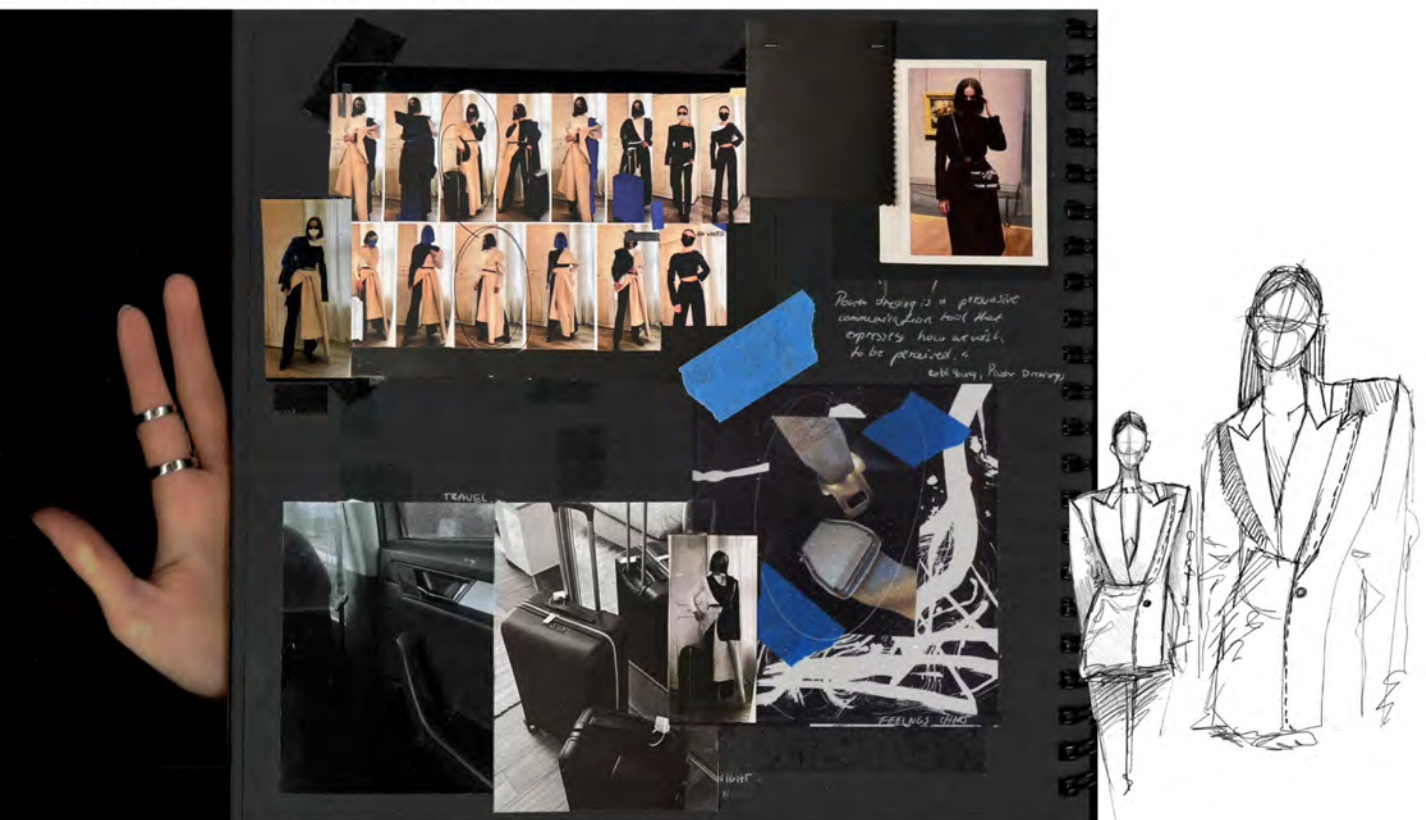
TO THE BLACK OF THE NIGHT



ANNA MALCZEE

Throughout the last three years, I understood the value of creating a home environment that reflects identity. Fashion is a language that allows for a personal form of expression. Garments that make you look confident, should feel confident. Inspired by Power Dressing - term shaped in the 20th Century, by a great designer Thierry Mugler and above all - by myself. This collection outlines my personal journey to finding myself. Through frequent travels, longing, bliss, fear and nostalgia. With a great interest for tailoring and digital creation I decided to combine traditional tailoring methods with 3D digital fashion design construction and pattern cutting. Depending on 3D softwares such as CLO 3D and Blender which I used to reproduce digital versions of pre-made metal accessories to strengthen my collection.

DRAPING ON MYSELF - PIECES FROM MY WARDROBE I USUALLY TRAVEL WITH



EMPHASIS ON METAL ELEMENTS ON SUITCASES, CARS, AIRCRAFT, BUSES.
FABRICATION, DURABLE, CONFIDENT, COMFORTABLE





DRAPING AND DESIGN PROCESS



*Shoulders, fit, and
structure with
zipper*

Handmade design



*Focus on structure of jacket
- exaggerated shoulders
- shoulder pads*



*Be careful for
crossing
200*



ALEXANDER MCQUEEN ZIPPERS ON GARMENTS.
DETACHABLE - HALF UNZIPPED SLEEVES



MAKING OF LOOK 1 -
TAILORED MELTON WOOL COAT
SHAPED DRESS WITH A CORSET



PADDING



DAYS IN THE STUDIO

Making Look 1
Melton Wool Tailored
Coat



cutting with
the help
corner of body
highlighted



LINING



PATTERN DRAFTING MADE DIGITALLY IN CLO 3D
PRINT LAYOUT PREPARED IN ADOBE ILLUSTRATOR
AND SEND TO PRINT & CUT

CLO 3D AND BLENDER WORK



MAKING ACCESSORIES IN SMALL METAL WORKSHOP



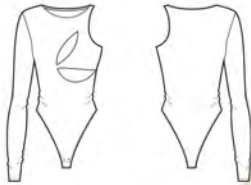
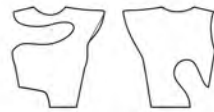
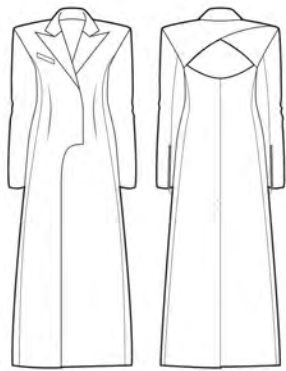


LOOK 2

LOOK 1



LOOK 3



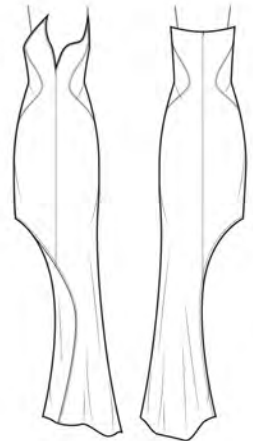
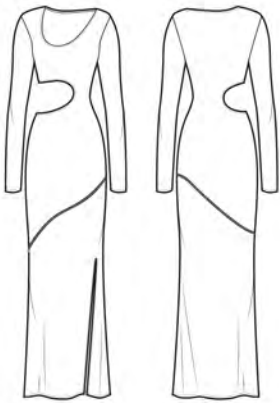
LOOK 4

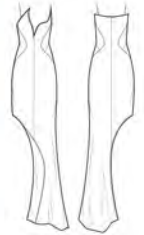
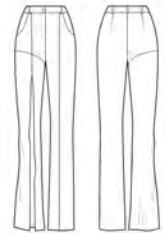
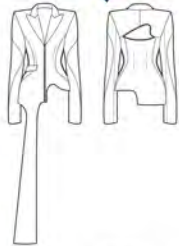




LOOK 5

LOOK 6





REAL GARMENTS OUTCOME

