

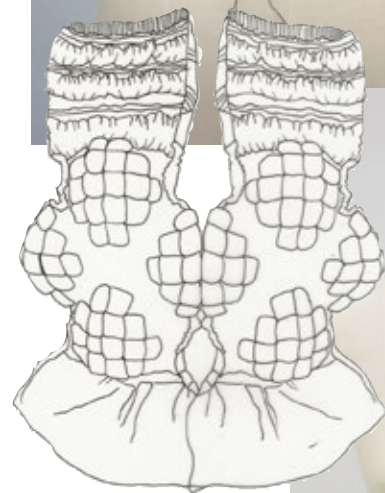
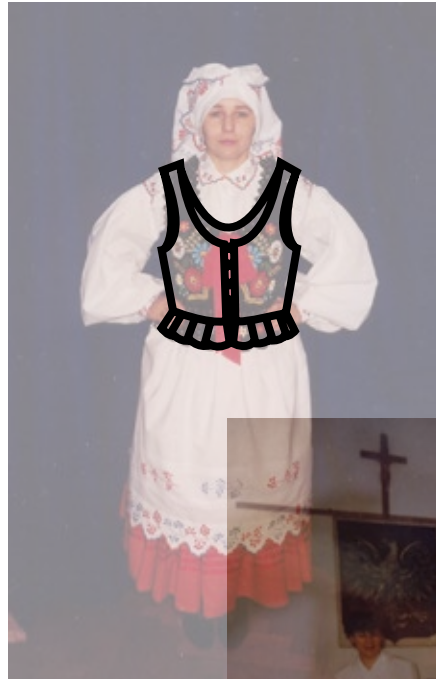




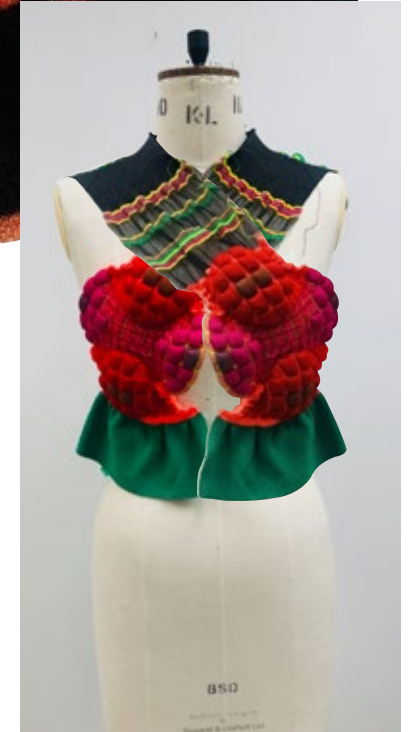
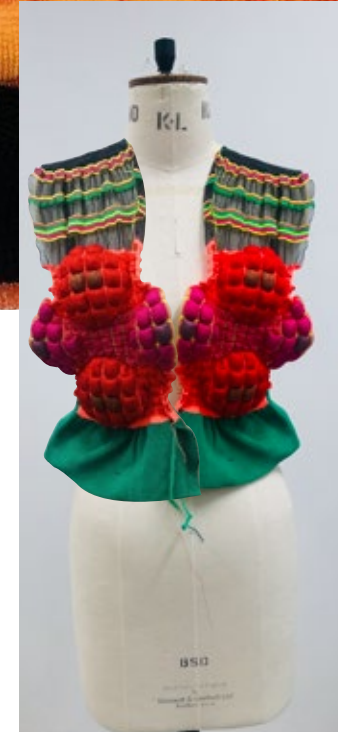


- Highly embroidered/detailes designs
- Lace up fastening
- Layering
- Vibrant colours standing out against the black background
- Mix of different qualities of fabric (shiny/matt)

Margiela patchwork sock sweater- using patch-
working to create garments due to the quality
and nature of the textiles



Draping experimentation



• 22 pockets
 • 15 sections

• ruffle - 160 rows, $t^{\circ}9.5$, half cordigan
 • elastic - 20 rows
 • flower motif - 12 pockets
 • 15 sections

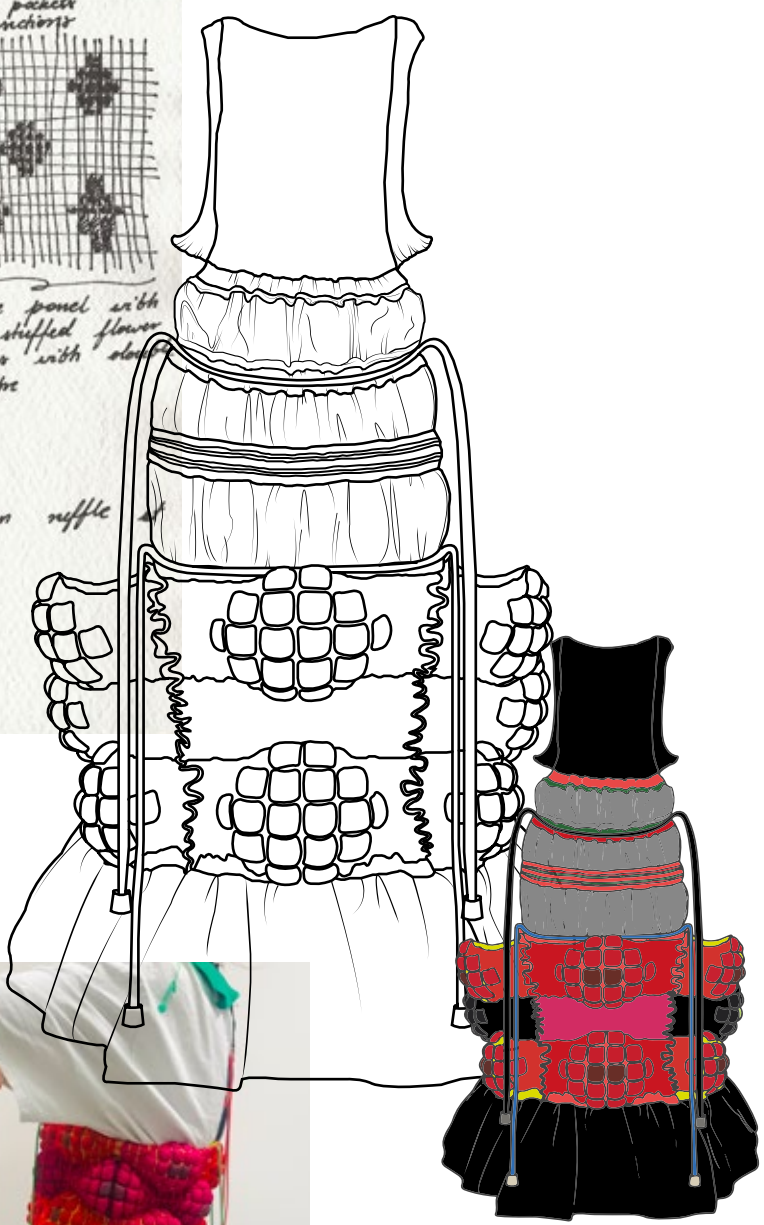
5 sections of unstuffed pockets

• elastic - 10 rows
 • 18 rows of circular monofilament
 • 8 rows elastic
 • 2 rows viscose
 • 5 rows viscose
 • 8 elastic
 • 2 viscose
 • 2 viscose
 • 7 elastic
 • 100 rows of circular monofilament
 • 6 viscose
 • 20 layers elastic cord
 • 6 viscose
 • 120 rows of circular monofilament
 • 6 rows of viscose
 • 20 rows of elastic
 • 2x2 rib (120 rows, $t^{\circ}9.5$, black viscose plated with clear monofilament) + 2 additional rows of 2x2 rib at $t^{\circ}10$

side panel design with four stuffed flower designs with a single centre one and with stable centre

• side panel with five stuffed flower designs with stable centre

• 20 rows of elastic, $t^{\circ}9$
 • 160 rows of half cordigan ruffle $t^{\circ}9.5$



black viscose + clear monofilament

low row for the ribbed neckline collar

in laying elastic

side piece 2 pieces with 11 pocket design

2 pocket design for front centre piece + back centre piece with side pieces consisting of 2 panels of 11 pocket design

adding elastic full monofilament with flower section at the cuff must forearm

a layering elastic to make it will join at the bottom with elastic inlay



• ruffle - 160 rows of half cordigan $t^{\circ}9.5$
 • elastic - 20 rows $t^{\circ}9.5$
 • flower motif - 12 pockets
 • 15 sections

• elastic - 10 rows $t^{\circ}9.5$
 • 18 rows of circular monofilament
 • 8 rows elastic
 • 2 rows viscose
 • 5 rows viscose
 • 8 elastic
 • 2 viscose
 • 2 viscose
 • 7 elastic
 • 100 rows of circular monofilament
 • 6 viscose
 • 20 layers elastic cord
 • 6 viscose
 • 120 rows of circular monofilament
 • 6 rows of viscose
 • 20 rows of elastic
 • 2x2 rib (120 rows, $t^{\circ}9.5$, black viscose plated with clear monofilament) + 2 additional rows of 2x2 rib at $t^{\circ}10$

side panels
 • 160 rows of half cordigan ruffle, $t^{\circ}9.5$
 • elastic - 20 rows
 • flower motif - 12 pockets
 • 15 sections $t^{\circ}9.5$
 • elastic - 10 rows
 • cut off

side panels
 • 160 rows of half cordigan ruffle, $t^{\circ}9.5$
 • elastic - 20 rows
 • flower motif - 12 pockets
 • 15 sections $t^{\circ}9.5$
 • elastic - 10 rows
 • cut off

• 22 pockets
 • 15 sections

• ruffle - 160 rows, $t^{\circ}9.5$, half cordigan
 • elastic - 20 rows
 • flower motif - 12 pockets
 • 15 sections

5 sections of unstuffed pockets

• elastic - 10 rows
 • 18 rows of circular monofilament
 • 8 rows elastic
 • 2 rows viscose
 • 5 rows viscose
 • 8 elastic
 • 2 viscose
 • 2 viscose
 • 7 elastic
 • 100 rows of circular monofilament
 • 6 viscose
 • 20 layers elastic cord
 • 6 viscose
 • 120 rows of circular monofilament
 • 6 rows of viscose
 • 20 rows of elastic
 • 2x2 rib (120 rows, $t^{\circ}9.5$, black viscose plated with clear monofilament) + 2 additional rows of 2x2 rib at $t^{\circ}10$

side panel design with four stuffed flower designs with a single centre one and with stable centre

• side panel with five stuffed flower designs with stable centre

• 20 rows of elastic, $t^{\circ}9$
 • 160 rows of half cordigan ruffle $t^{\circ}9.5$

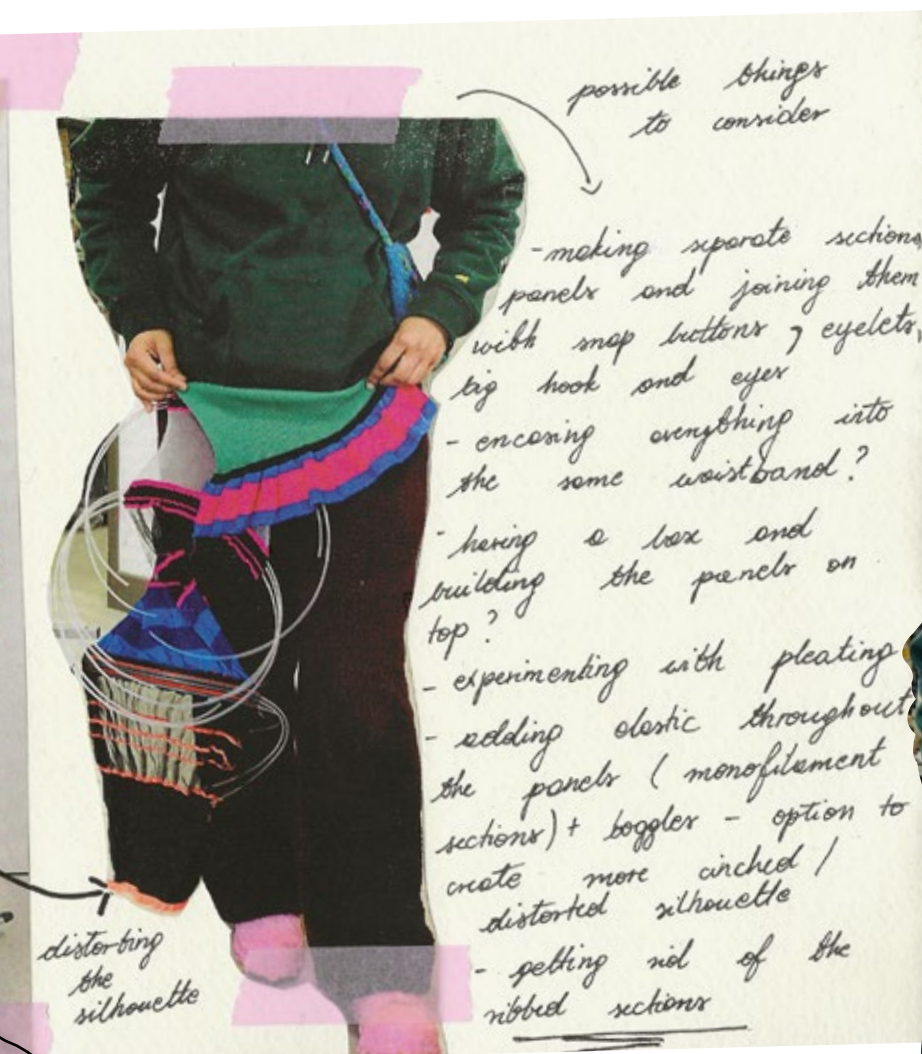
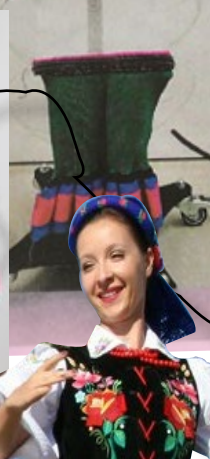
- ruffle - 100 near of half cord -
gan, +8.5
- in laying elastic cord
- elastic - 4 near
- in laying
- elastic - 10 near
- flower motif - 12 pocket design
- elastic - 10 near 15 inches
- in laying elastic cord
- elastic - 4 near
- 100 near of circular in mono -
flamant
- Pelotic
- 4 elastic
- 1 elastic
- 6 elastic

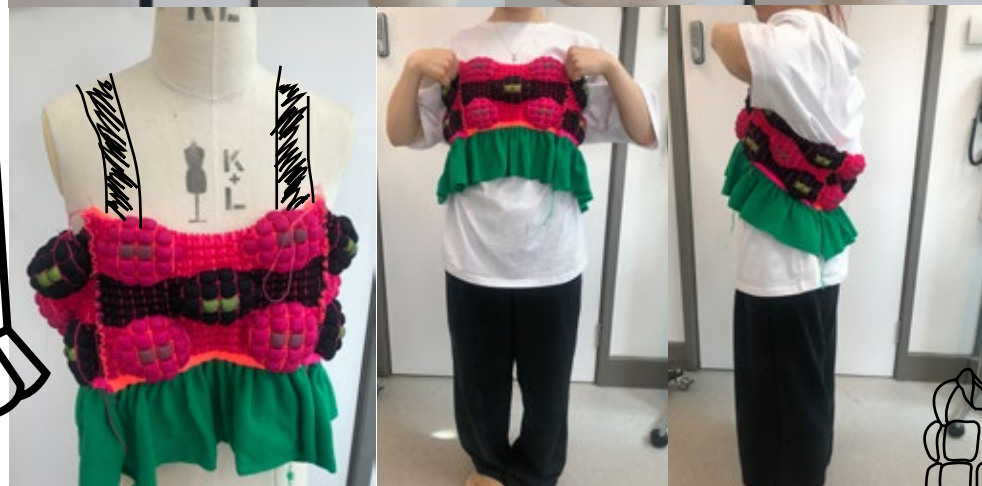


Connett & Lindquist Ltd.
London, E.C.4









Corrections:

- add straps (10 pockets wide) with stuffed flower sections
- take out the side panels and redo smaller (10 pockets wide)

- new side panels stuffing diagram
- old side panels to be made into detached sleeves

