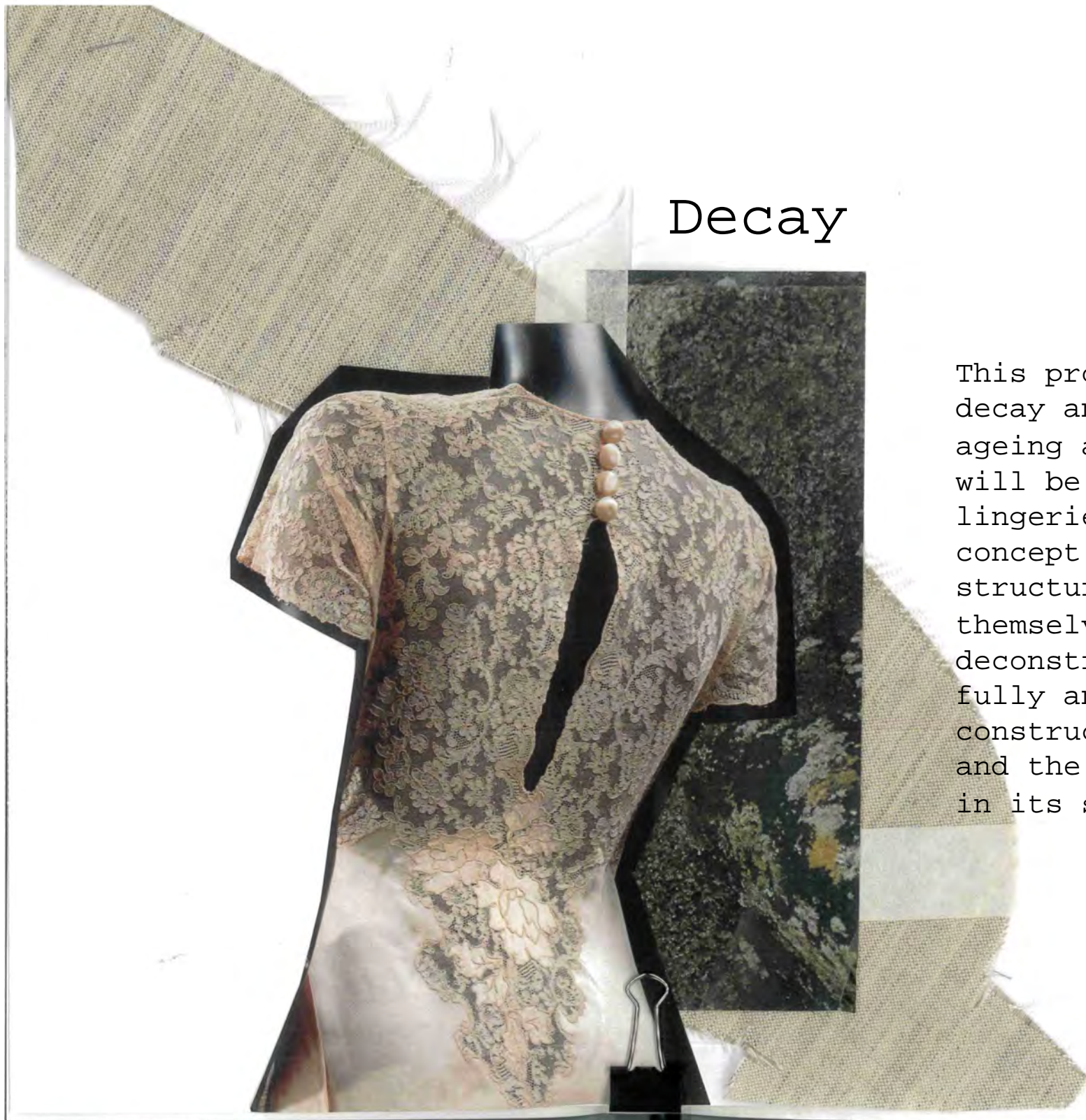


Decay

This project is centered around decay and the natural processes of ageing and time passing. A focus will be placed on tailoring and lingerie, using these to express the concept by playing with the structures of the garments themselves. They will be deconstructed and reconstructed, fully and partially revealing the construction process of the garments and the process of getting dressed in its self.



Lingerie/Tailoring combined

Exposing



could
used as
abstract pattern

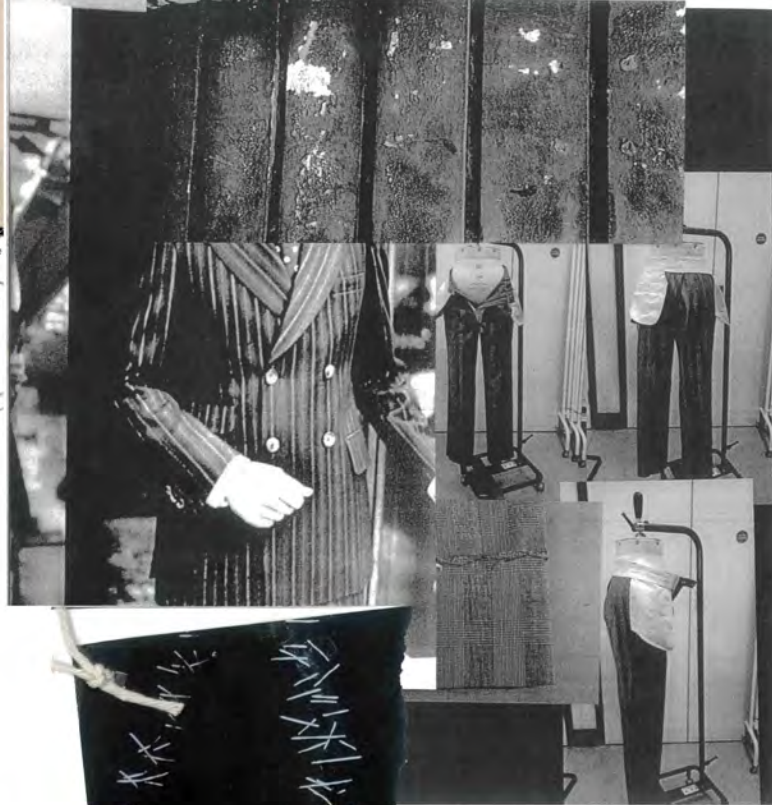


Agony.
Natural
processes

Welt pocket
trim



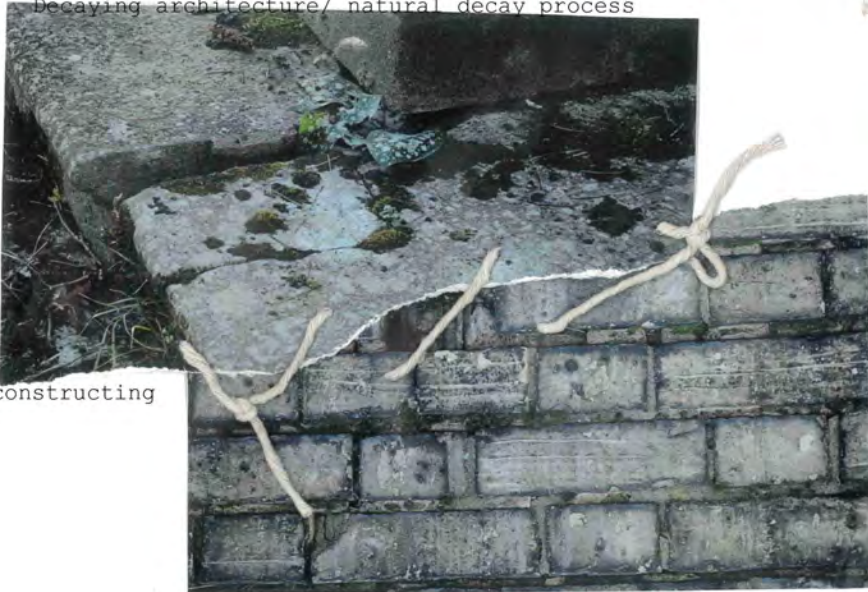
the striped suit



Traditional Tailoring techniques
-hand sewing

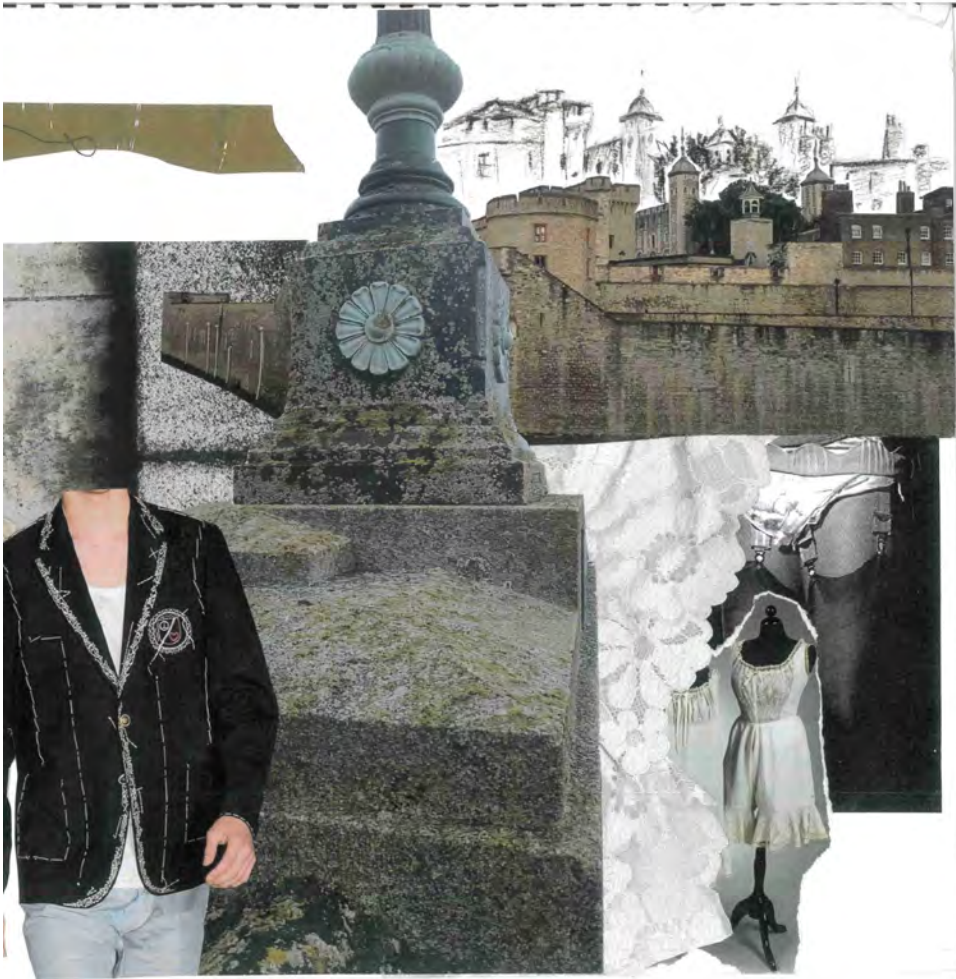


Decaying architecture/ natural decay process

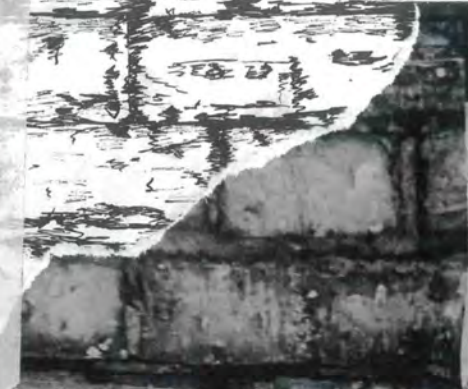


Decaying and reconstructing





Combining the two



delany



Lingerie & fabrics
Tailoring elements.

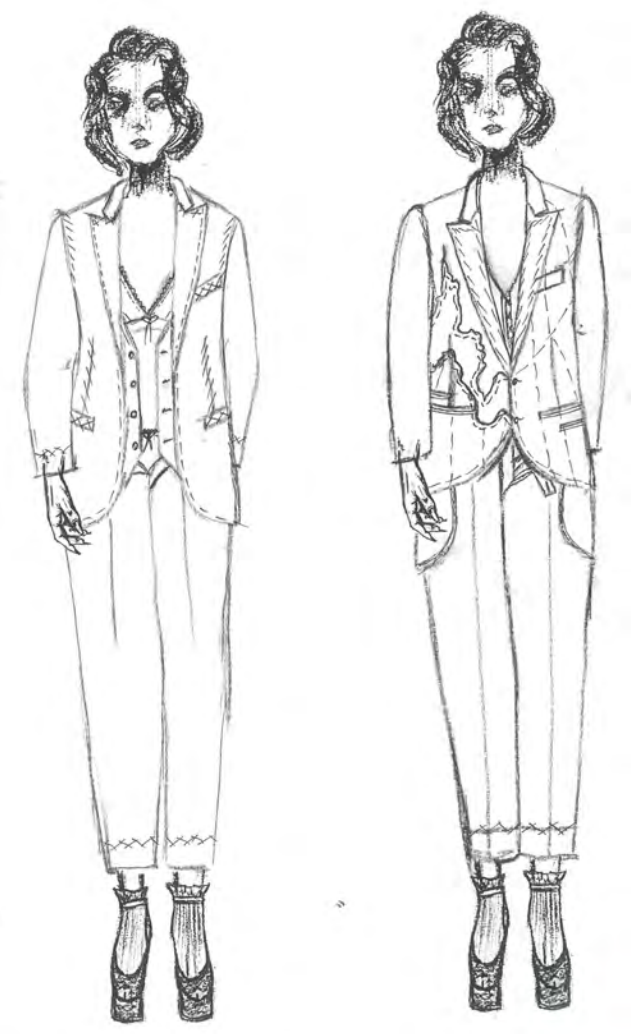




Traditional tailoring
basting stitches.
↓
Use traditional
techniques for
inspo.



Collar Style:



Sleeve is connected but less stitches

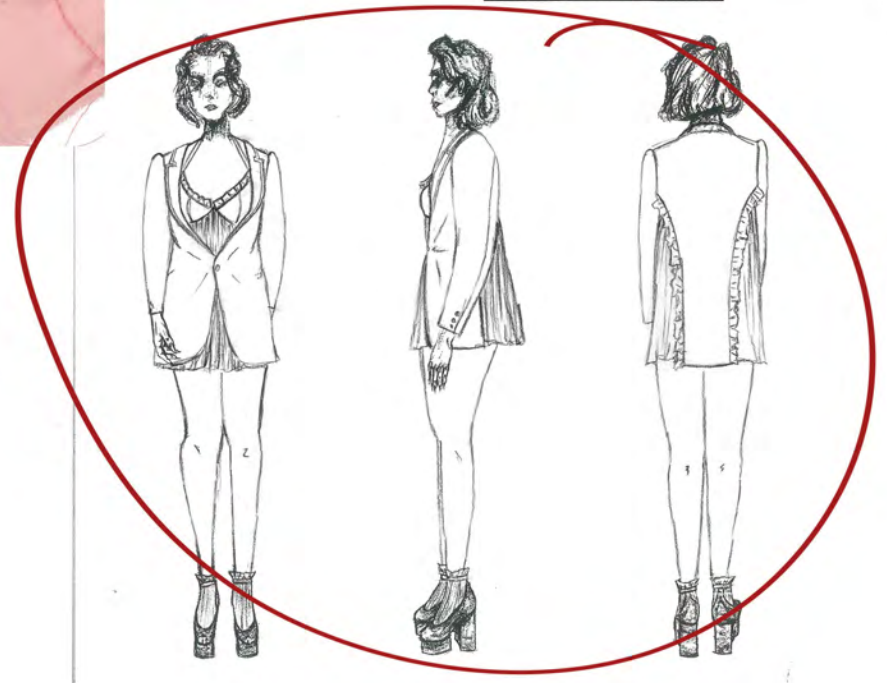
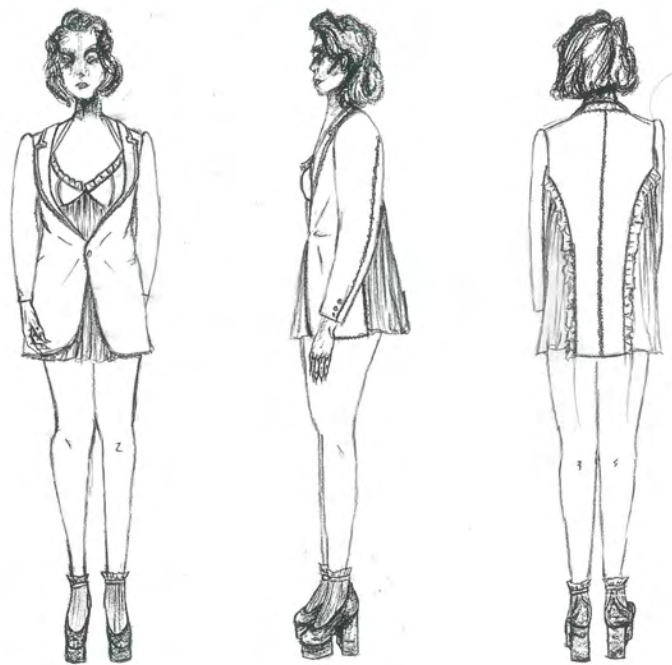
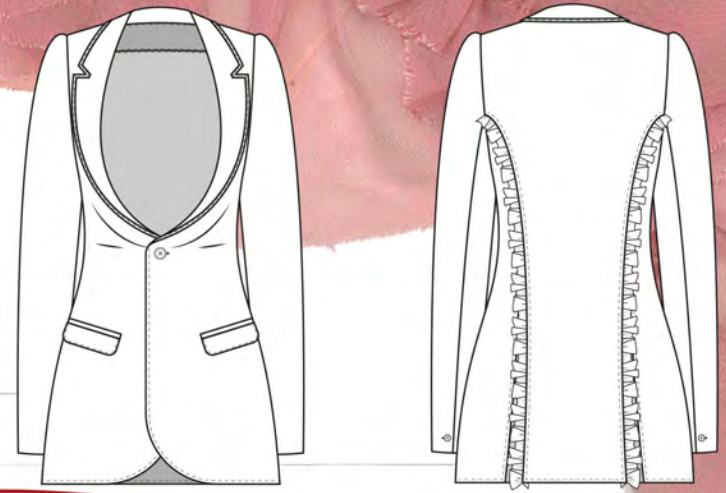
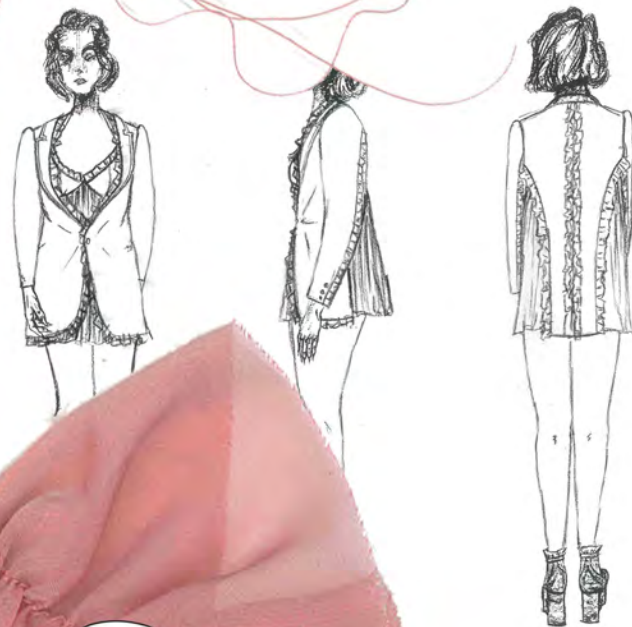


Changes to stitching.



The striped suit





Applique Placements



Back Placement



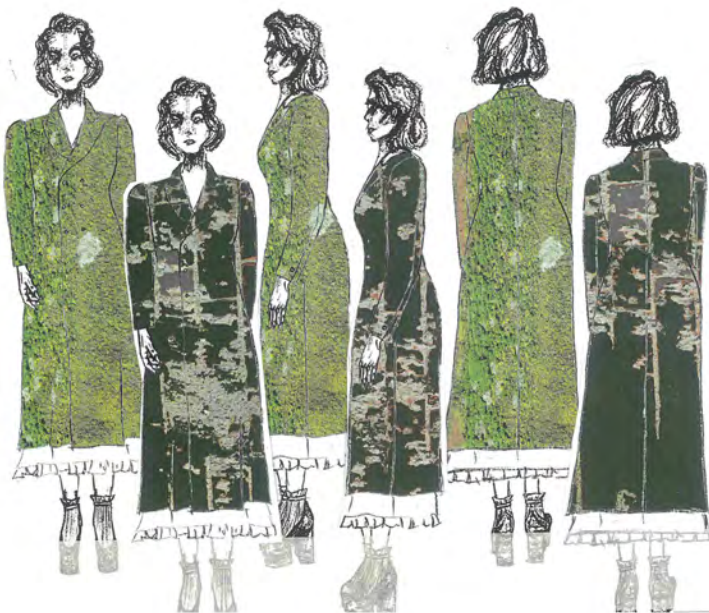
Final placement on garment

Pinning on garment with paper

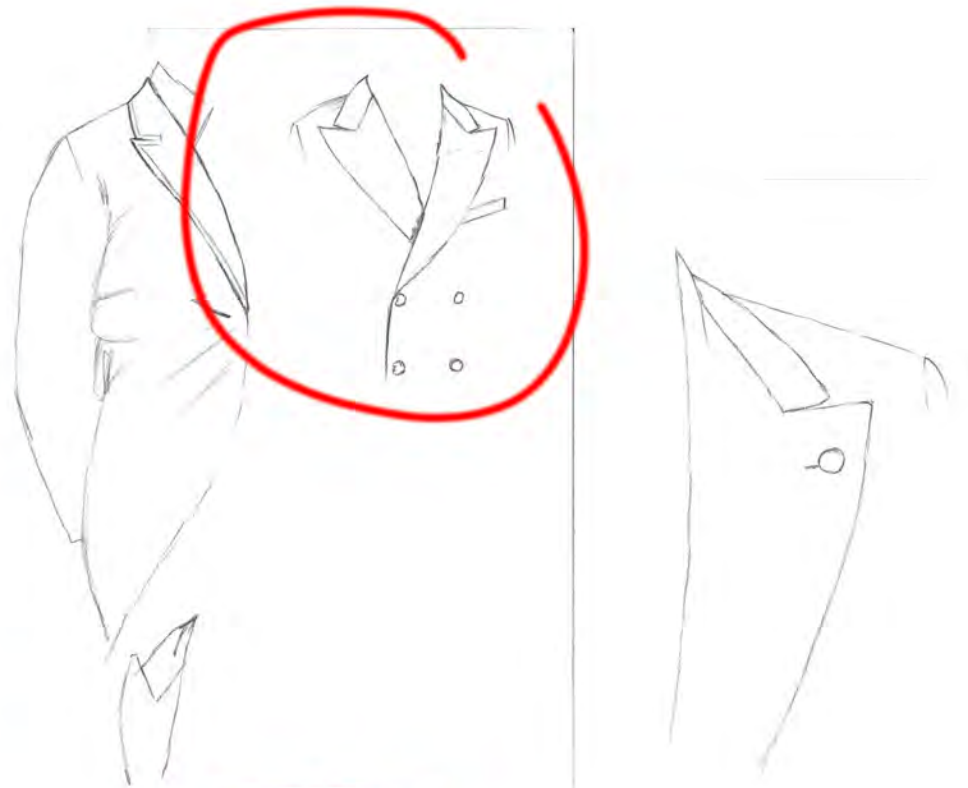
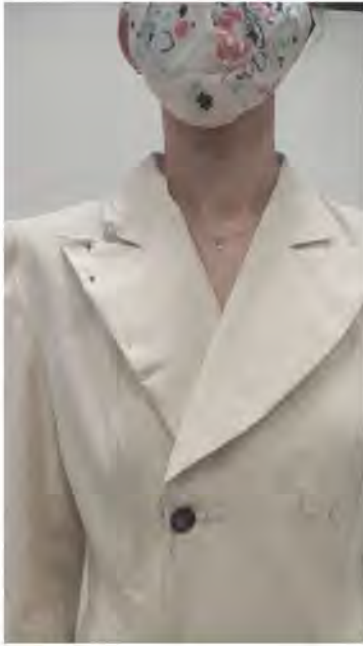
Applique Samples



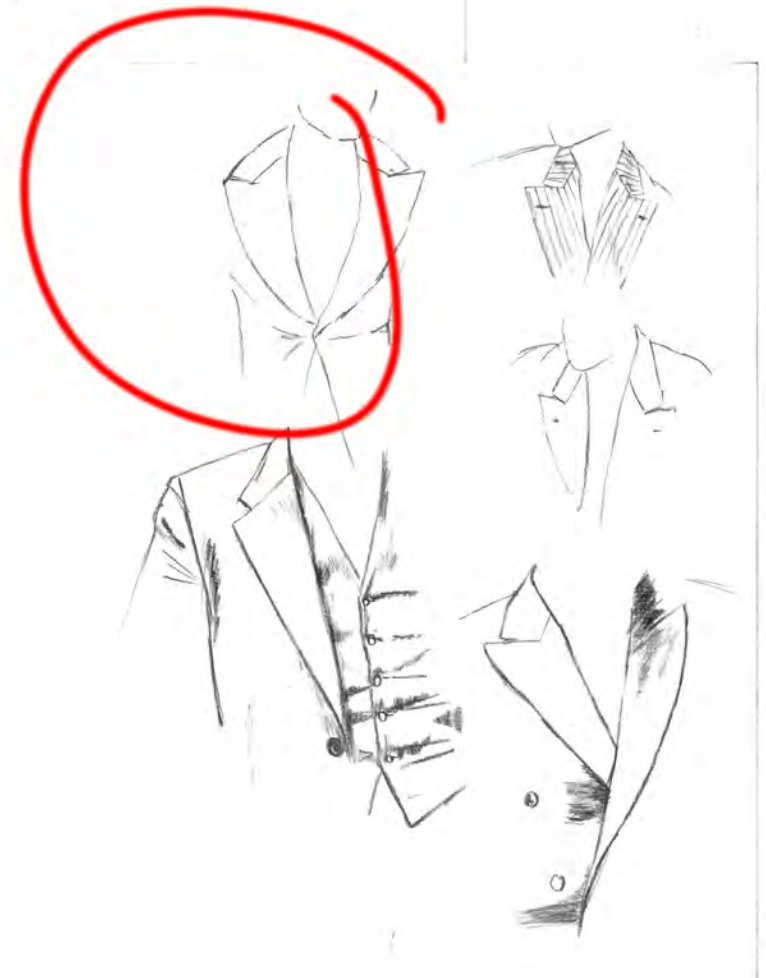
Applique Placement Ideas



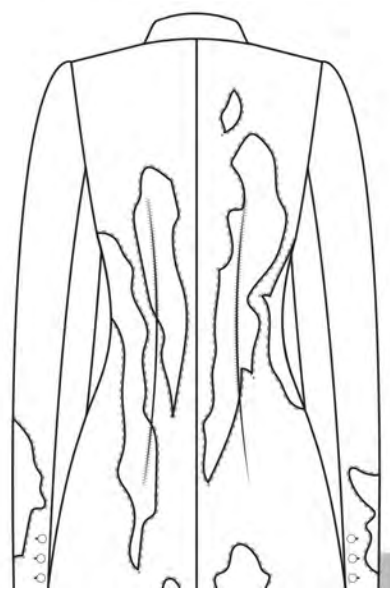
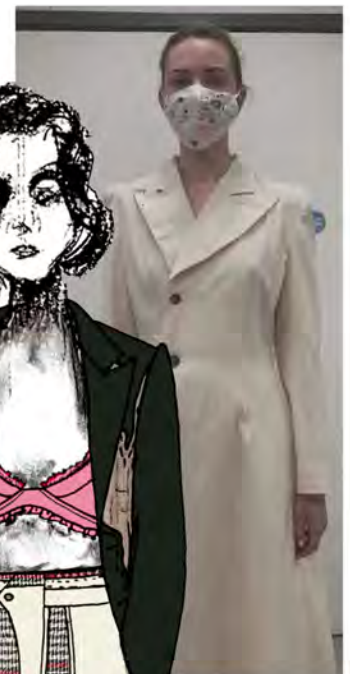
Alter Collar shape ←



Make bra bigger



Wide lapels
but not too round
↳ straighten out for a more
modern shape.



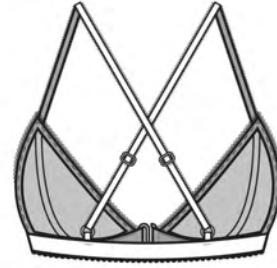


None gathered cup,
 ↳ for ruffles to
 side of or.

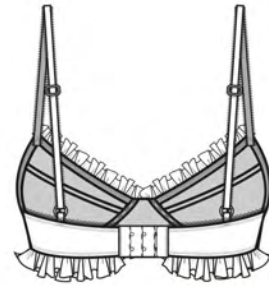
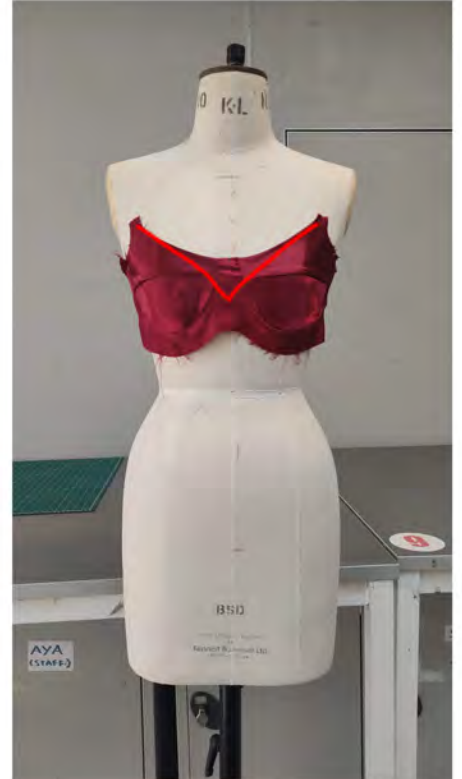


Possible
 Ruffle placements





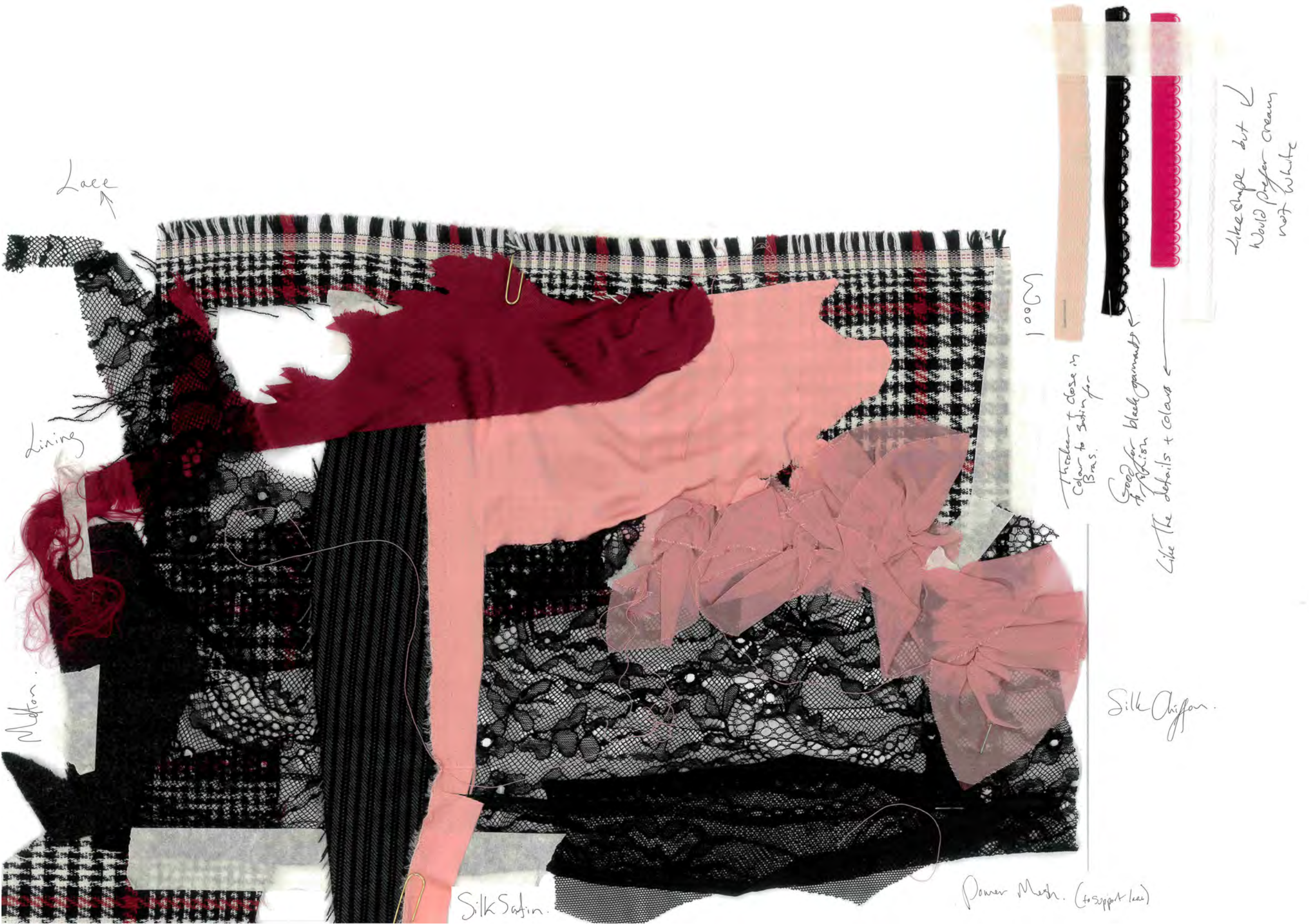
Wider neckline
3 alter cups



Make bra bigger



More of shape a half-cup



Lace

Lining

Cotton

Silk Satin

Power Mesh. (+support lace)

Silk Chiffon

Wool

Thicker + close in colour to skin for Bras.

Good for black garments + fashion

Like the details + colors

Like shape but I would prefer cream not white

