

# CHROMOPHOBIA

COLOUR IS MADE OUT TO BE THE PROPERTY OF SOME 'FOREIGN' BODY - USUALLY THE FEMININE, THE PRIMITIVE, THE INFANTILE, THE VULGAR OR THE QUEER.



# COLLAGED MONSTERS



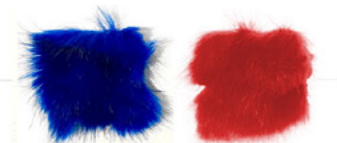
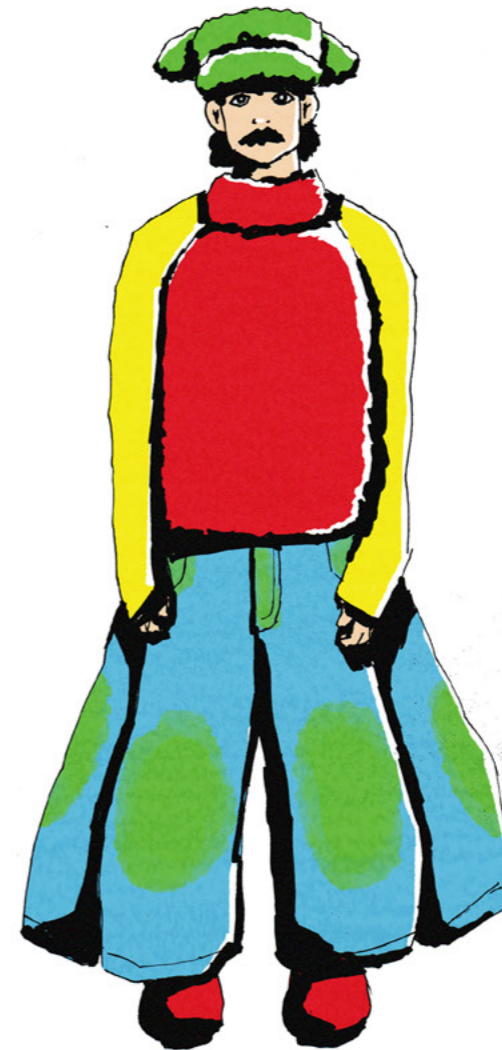
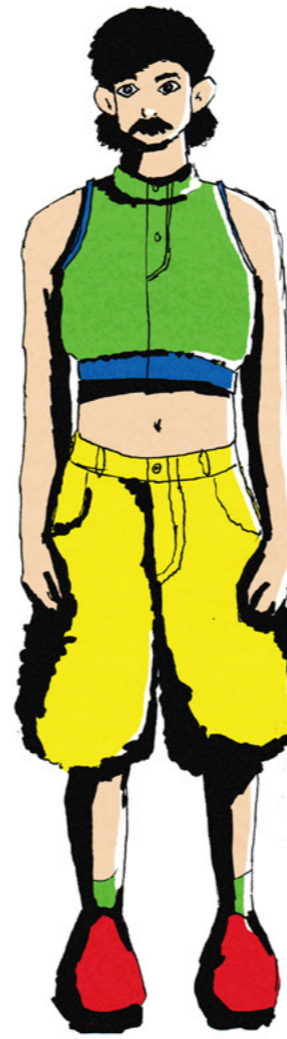
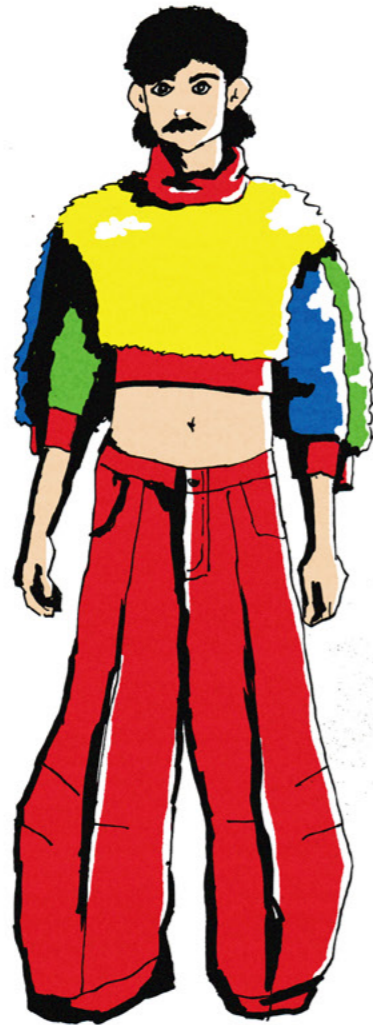
# INITIAL DRAPING



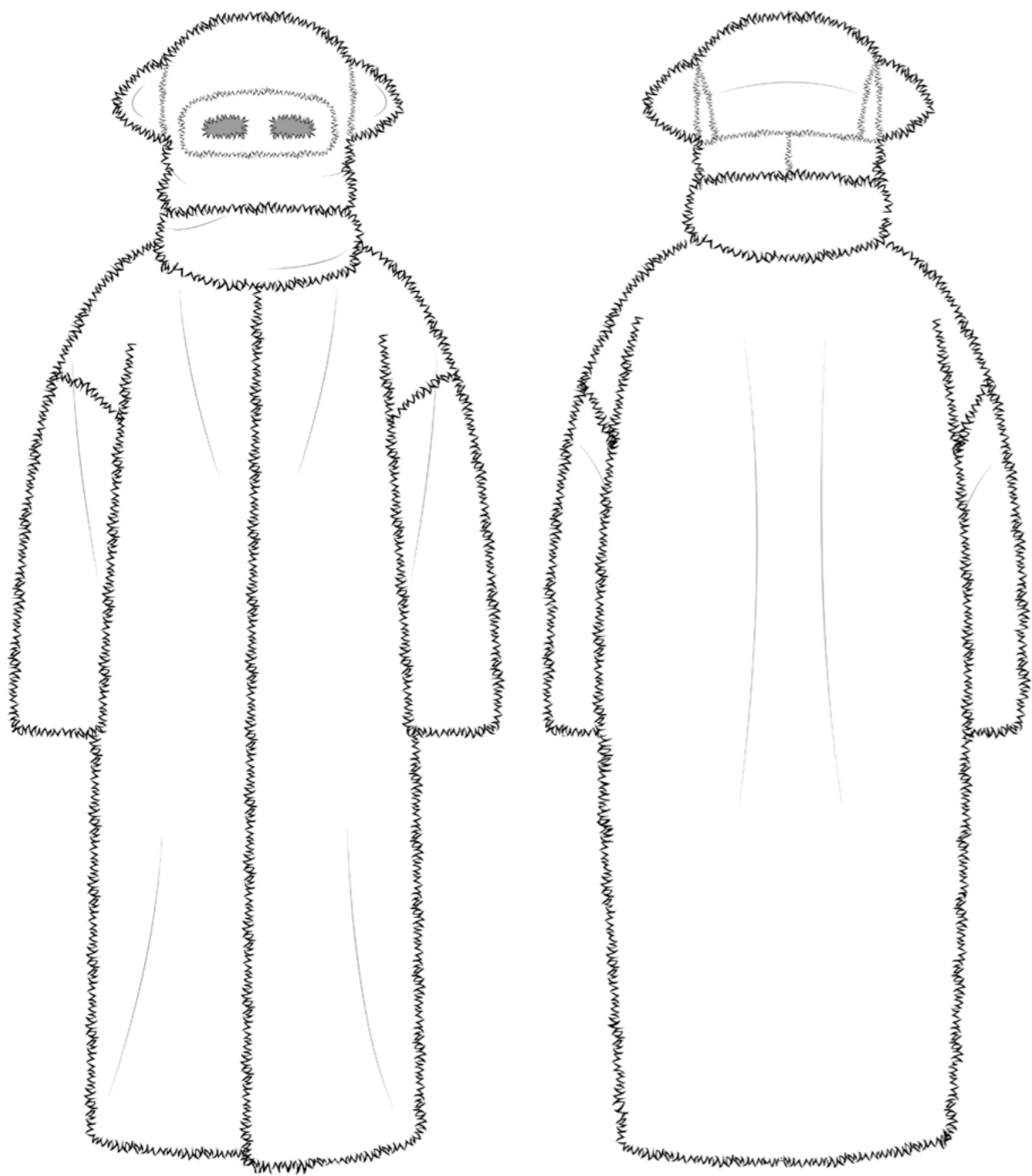
# CHROMOPHOBIA

MENSWEAR AW23

JOSEF LAMBERT

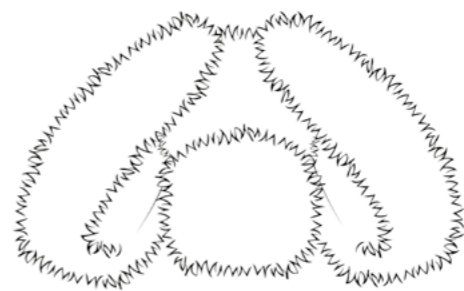
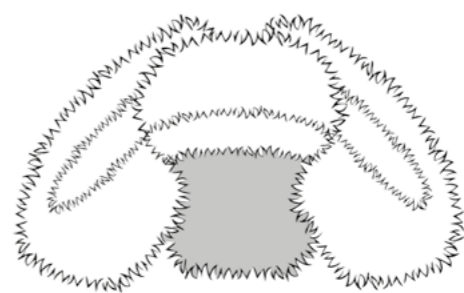


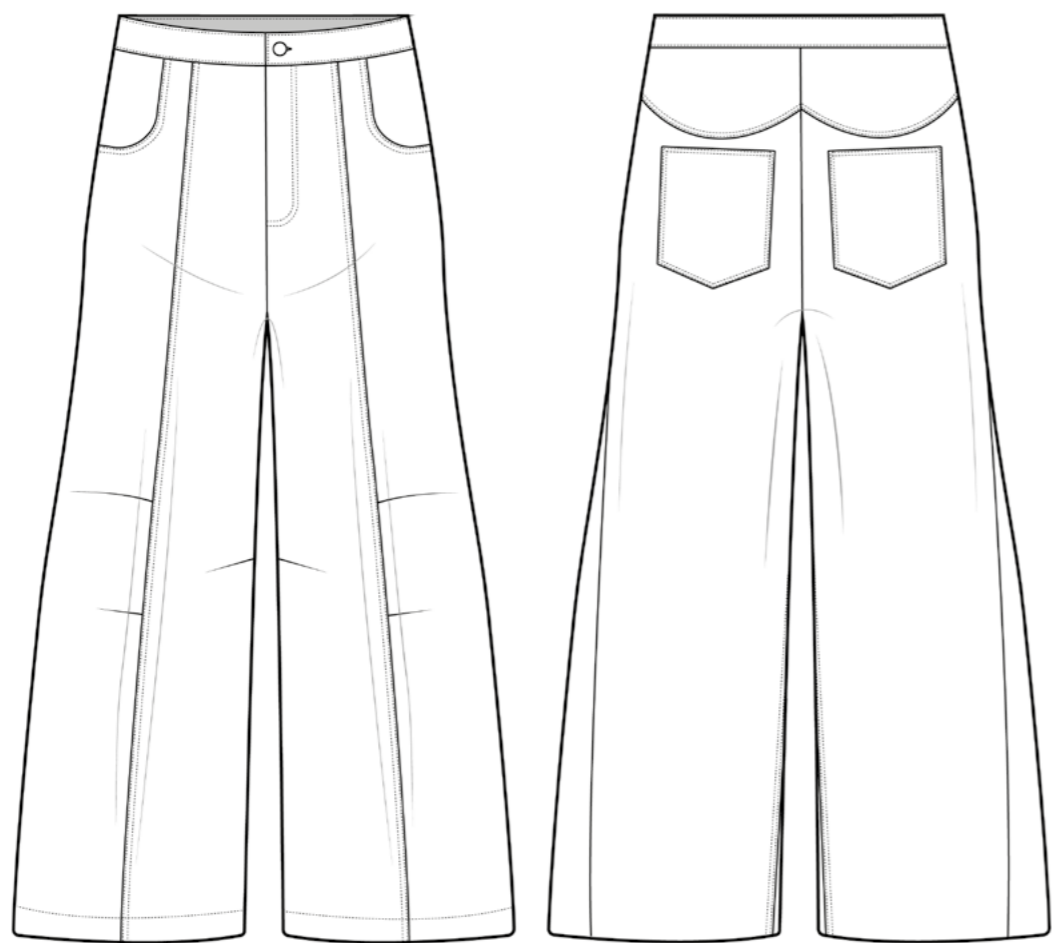
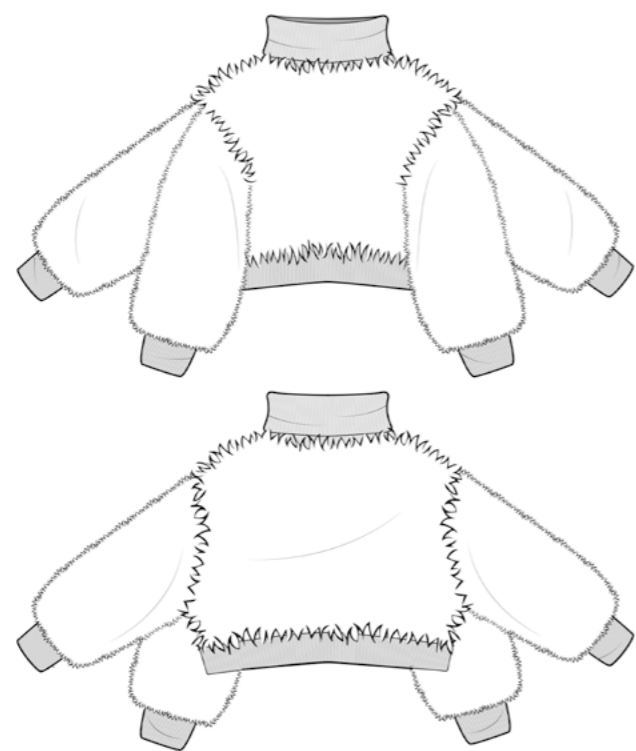
# 衣装番号四





# 衣 装 番 号 一





衣  
装  
番  
号  
二



