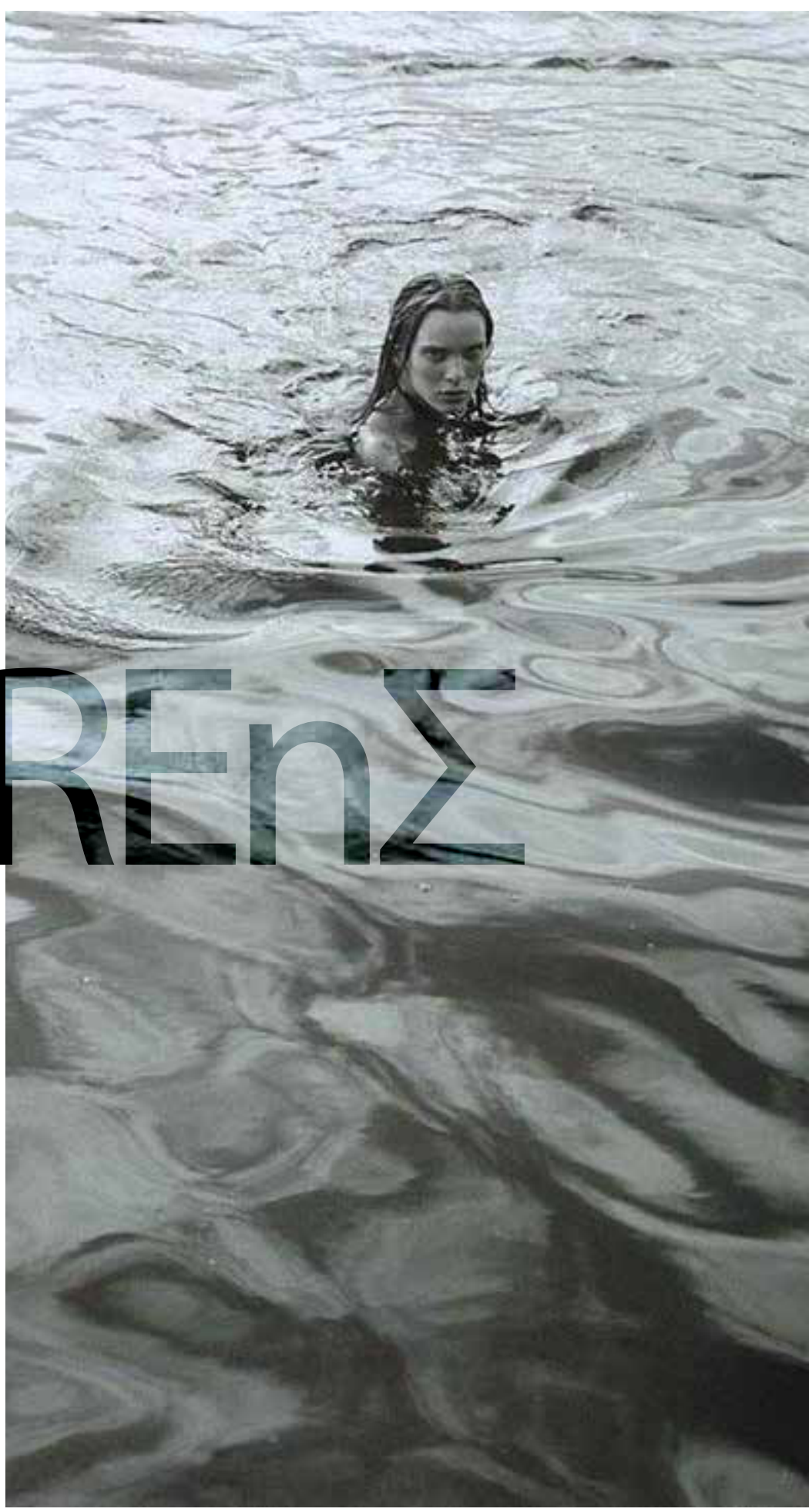
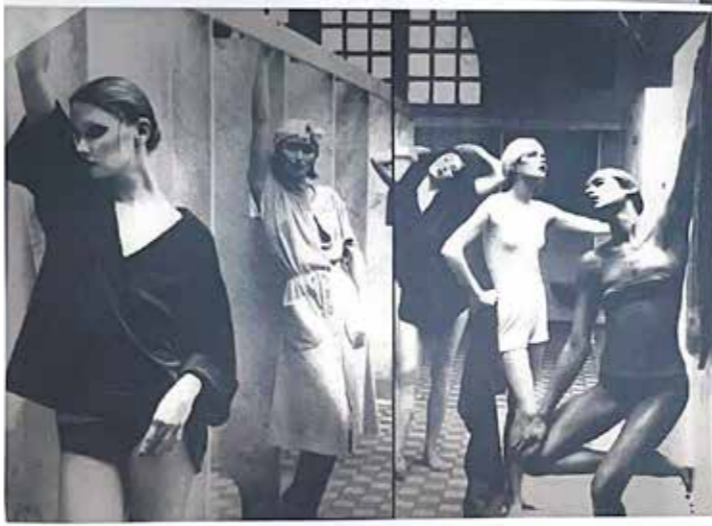


ΣηRENΣ . S/S 24. RESORT. WOMENSWEAR.

# ΣηRENΣ

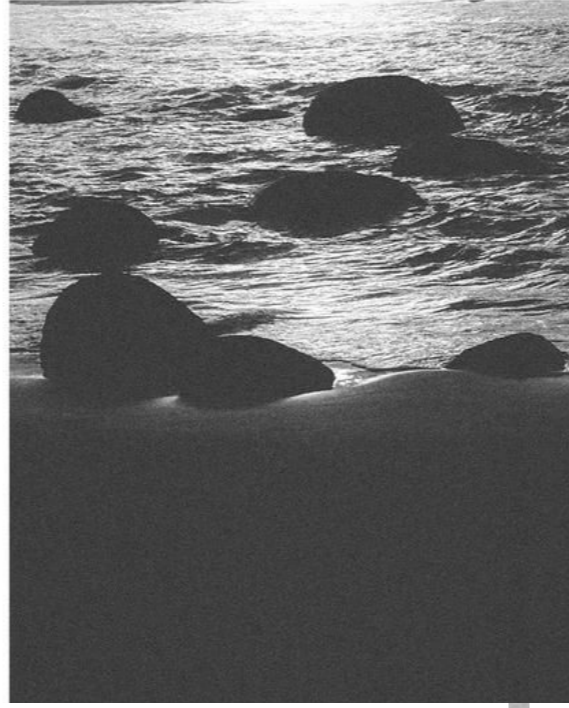


ΣηΡενΣ . S/S 24. RESORT. WOMENSWEAR. KEY RESEARCH.



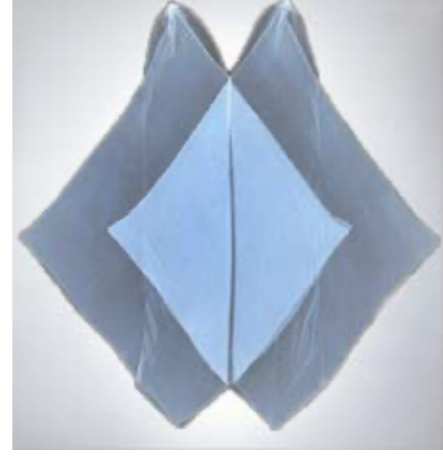


ΣηREnΣ . S/S 24. RESORT. WOMENSWEAR. MUSE.



Si-ri-nes

ΣηΡΕnΣ . S/S 24. RESORT. WOMENSWEAR. SILHOUETTE DEVELOPMENT.



ORIGINAL (1) (2) (3)

Keep low back (generally)

above 2nd floor

fold merge asymmetry

too low will cause issues with fitting - silhouette

Fold prefer on right side

ORIGINAL (4) (5) (6)

Brought right - could be one piece with front

Get rid of bulk get rid of fabric

Add asymmetry





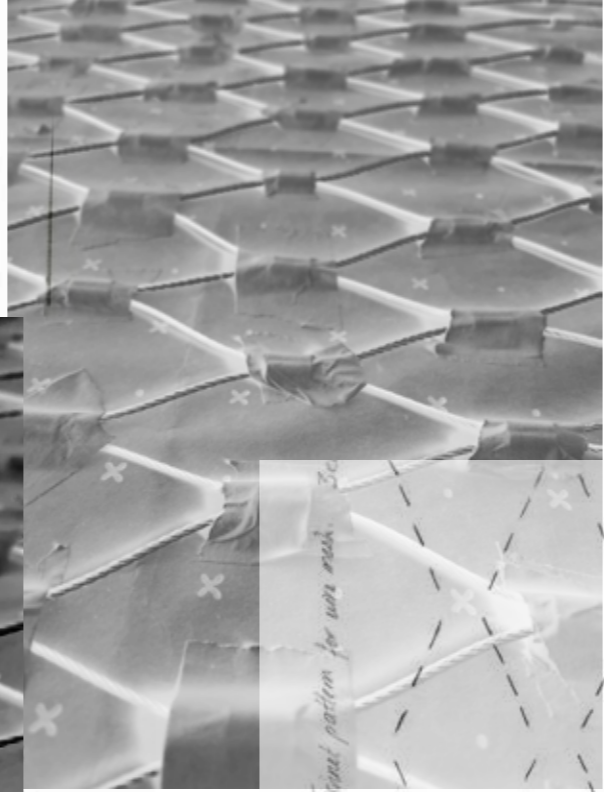
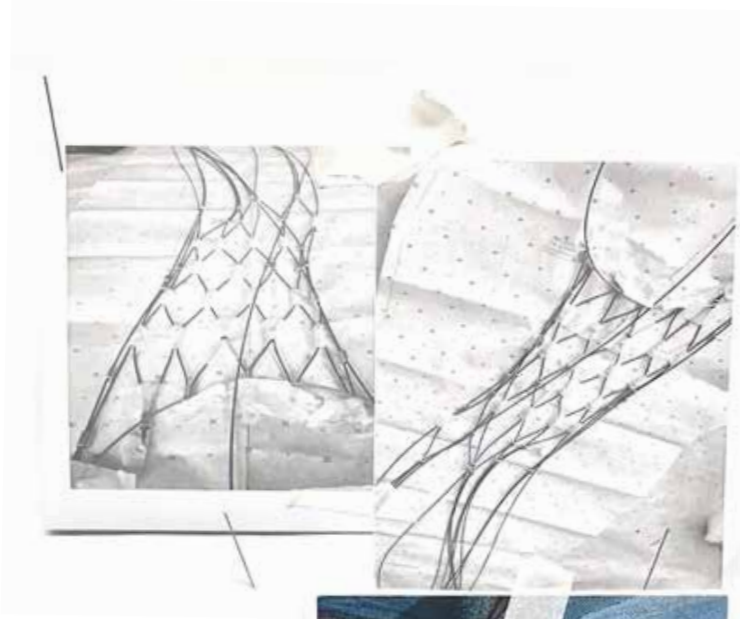
SKY. STORM. PALE BLUE. PEWTER.

ΣηREnΣ . S/S 24. RESORT. WOMENSWEAR. WIRE MESH DEVELOPEMENT



©Lover.

of fishing net



Typical pattern for wire mesh. 3D



Resort - Summer 2024

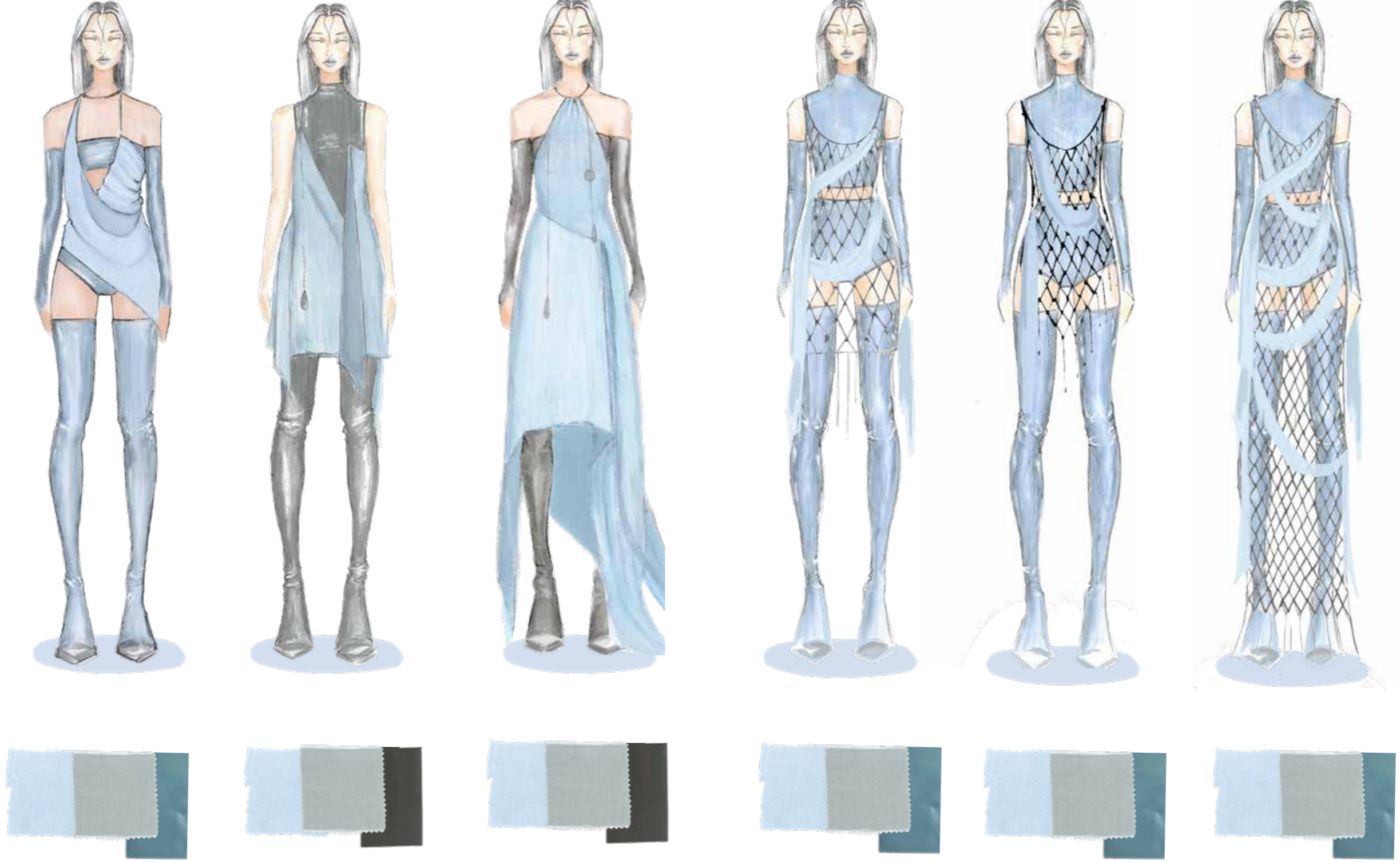


Resort - Summer 2024



# ΣηREnΣ

ΣηREnΣ . S/S 24. RESORT. WOMENSWEAR. LINE-UP.



# ΣηREnΣ



ΣηREnΣ . S/S 24. RESORT. WOMENSWEAR. PHOTOGRAPHIC LINE-UP.





