

FIAT PACK/MODULAR CLOTHING.



Flat Pack,

FOLD AWAY,

RICKARD LINDAUST

HUSSEIN CHALAYAN "envelope dress"

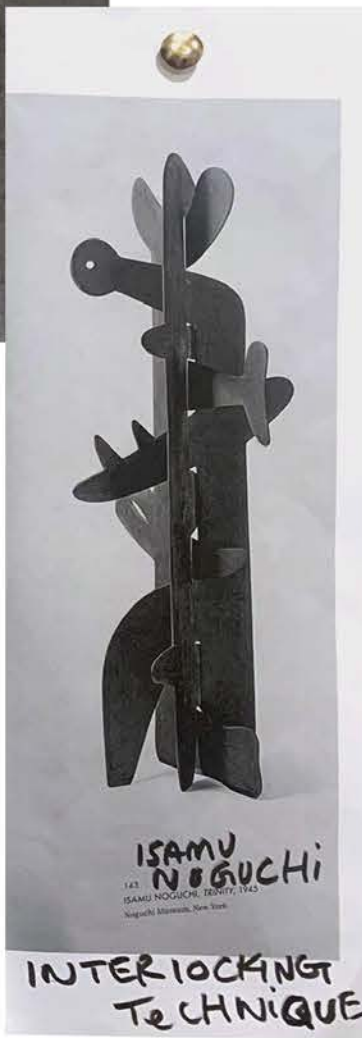


NO SEWING. ONE PIECE

VERA DE PONT



ONE PIECE TROUSER



ISAMU NOGUCHI

INTERLOCKING TECHNIQUE

Scaffolding + insulation tube.



volume in the middle



Slim straight top + Bottom



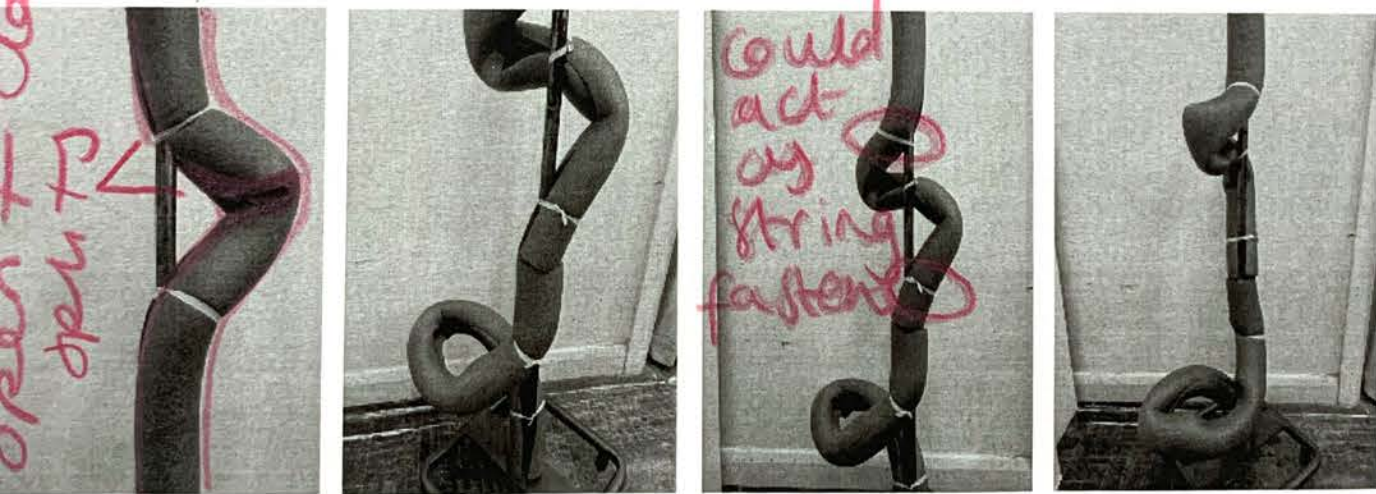
SPIRAL EFFECT



interesting openings

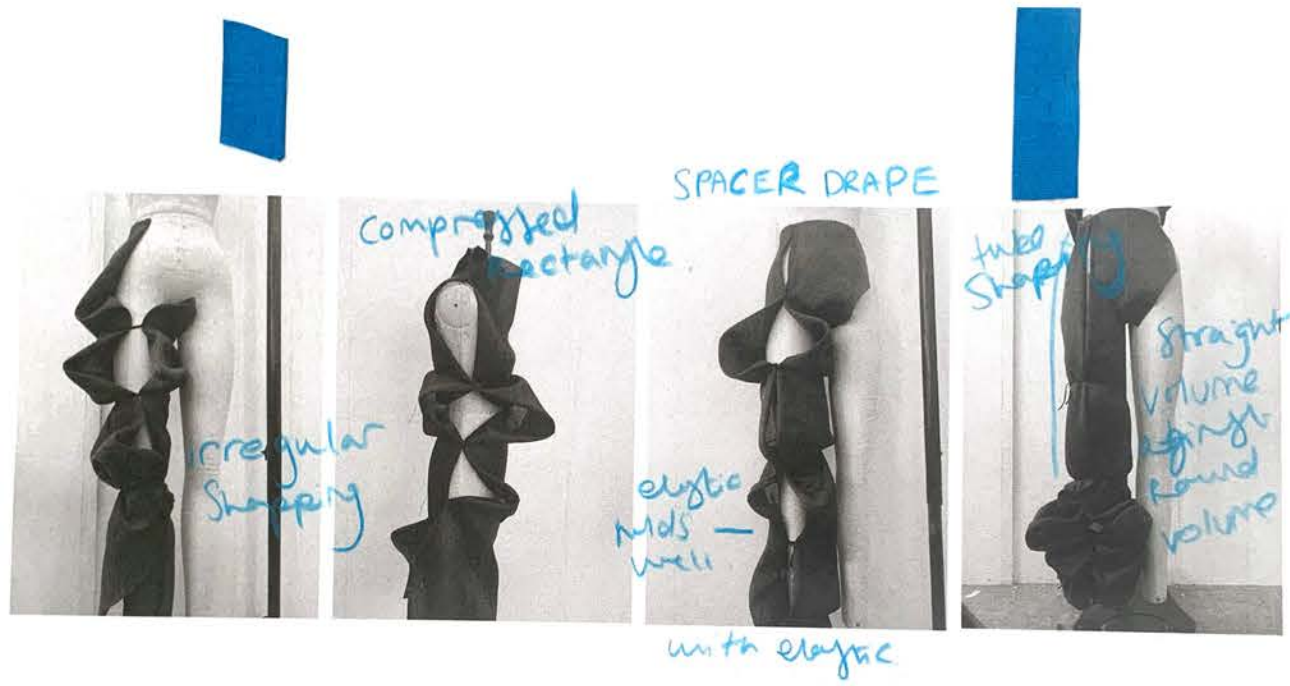
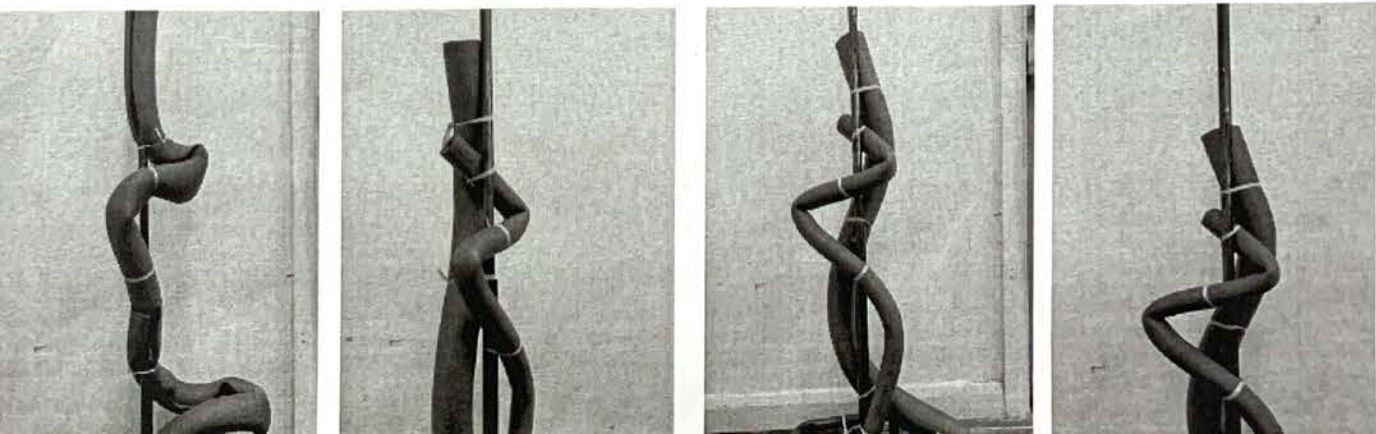


compression



open top open bottom

could act as string fastener



SPACER DRAPE

compressed rectangle

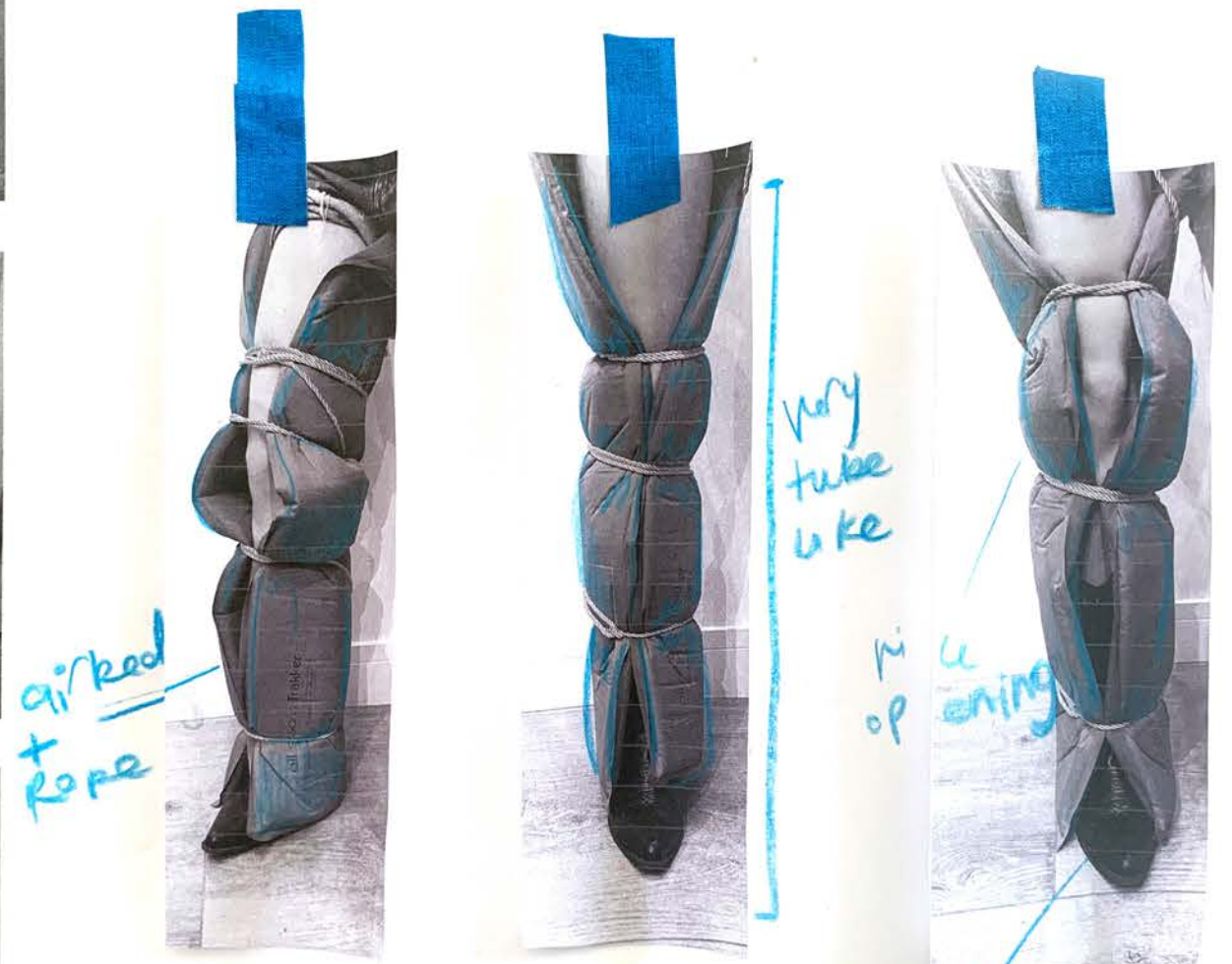
irregular shaping

elastic adds well

tucked shaping

straight volume against round volume

with elastic



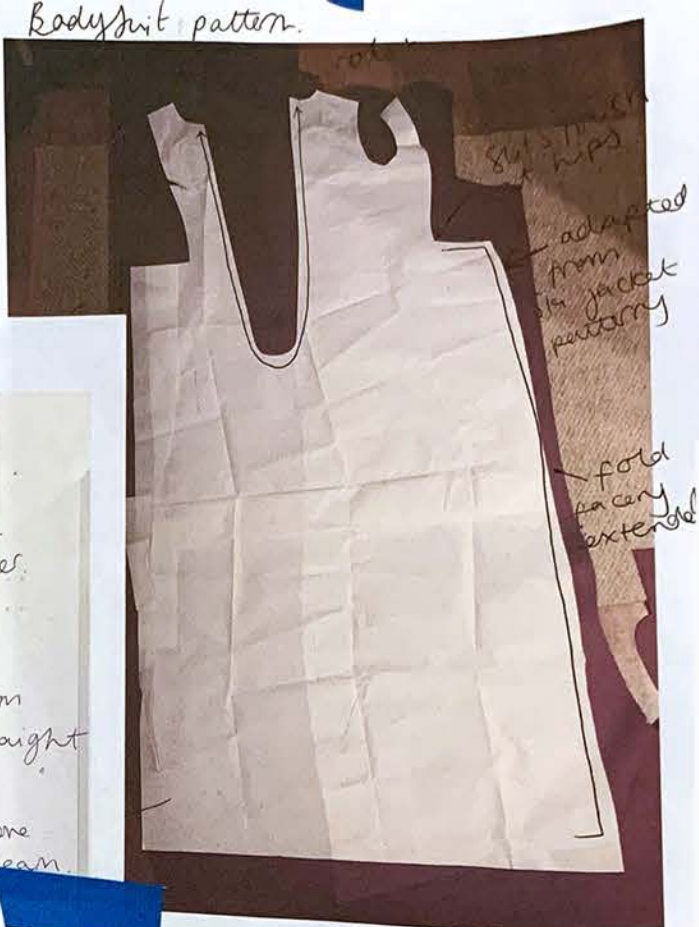
air-ked + rope

very tube like

rip opening

Boot/trouser development

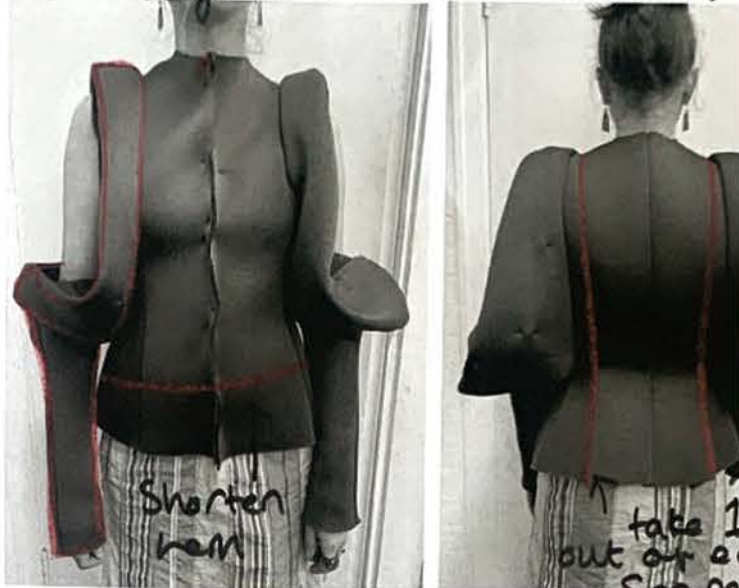
nice opening for shoe



Adjustability ①

②

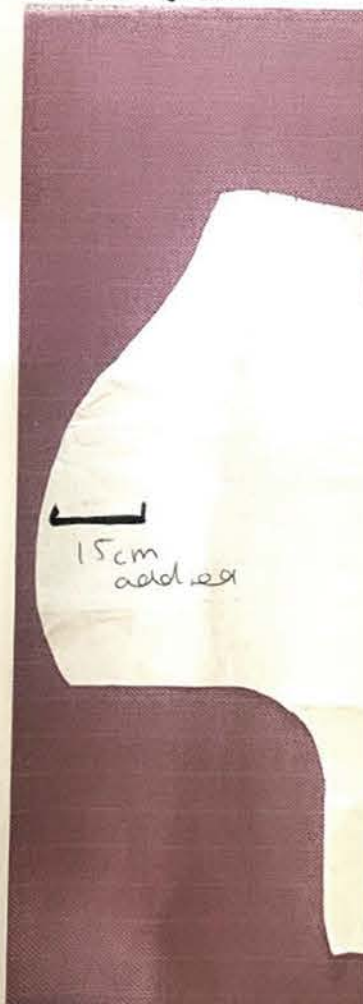
tube ski jacket. take 3. SPACER.



New Ski jacket Slee



New Sleeve.



Tunnel Sleeve Adaptability

Continuously Changing Shape.

Open sleeve.



2

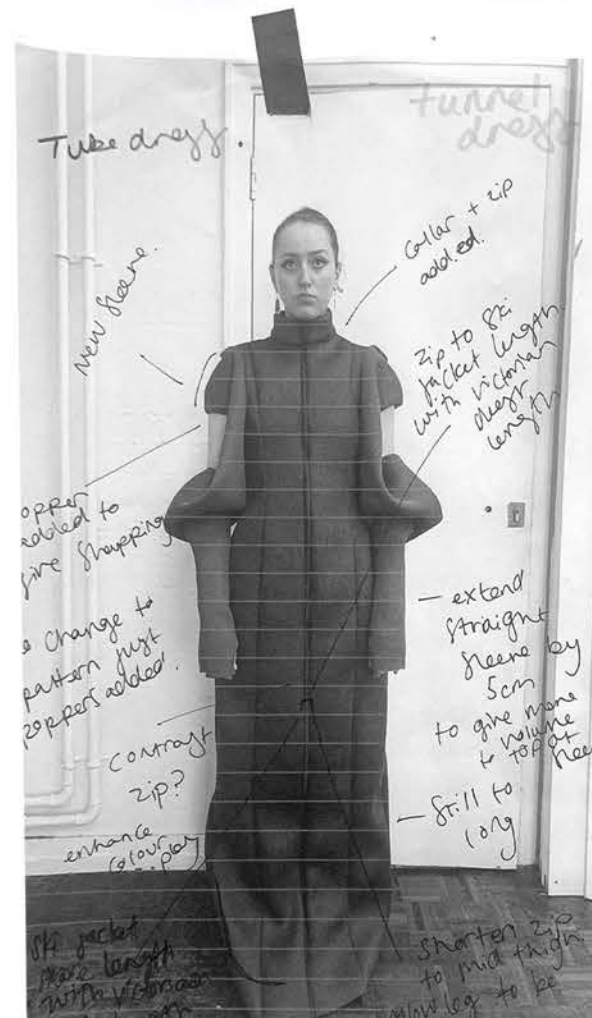


Closed sleeve.

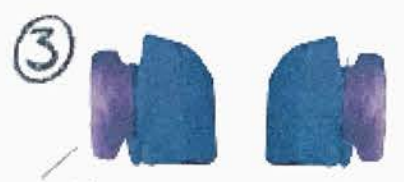


6 poppers allow for changing shape

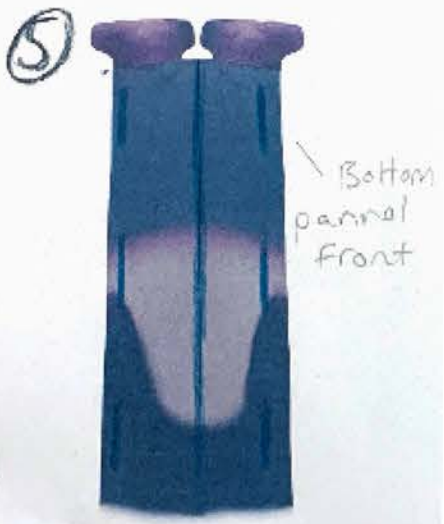
more volume to back.



① Bodice / Silet



Bottom panel sack



interlock puzzle puffer



Кутю Нович



PUZZEL PUFFER



**MORPHIC MATA**  
**FREYA THOMAS**  
**AW 23**

