



## A FAMILY PORTRAIT



A narrative of family, nostalgia and a longing for simplicity, set on the shores of 1930s British Seaside. Drawing from the work of John Piper, Picasso and archival seaside fashions, the collection embodies an abstracted and sculptural minimalist aesthetic.



FROM LEFT TO RIGHT: ELIZABETH, MAURICE, EUGUINE, MARGAURITE, SUZANNE

MARGATE 1938







JOHN PIPER



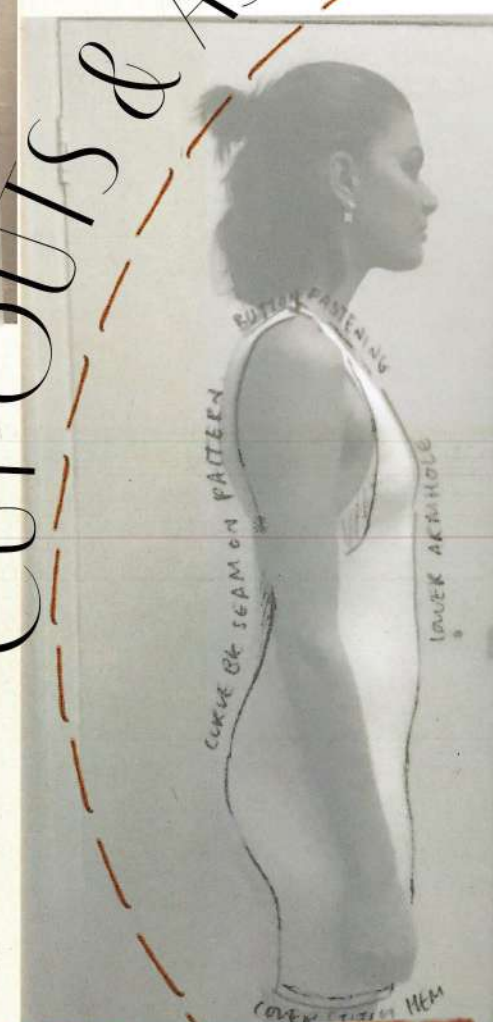




# SWIMSUIT BASE

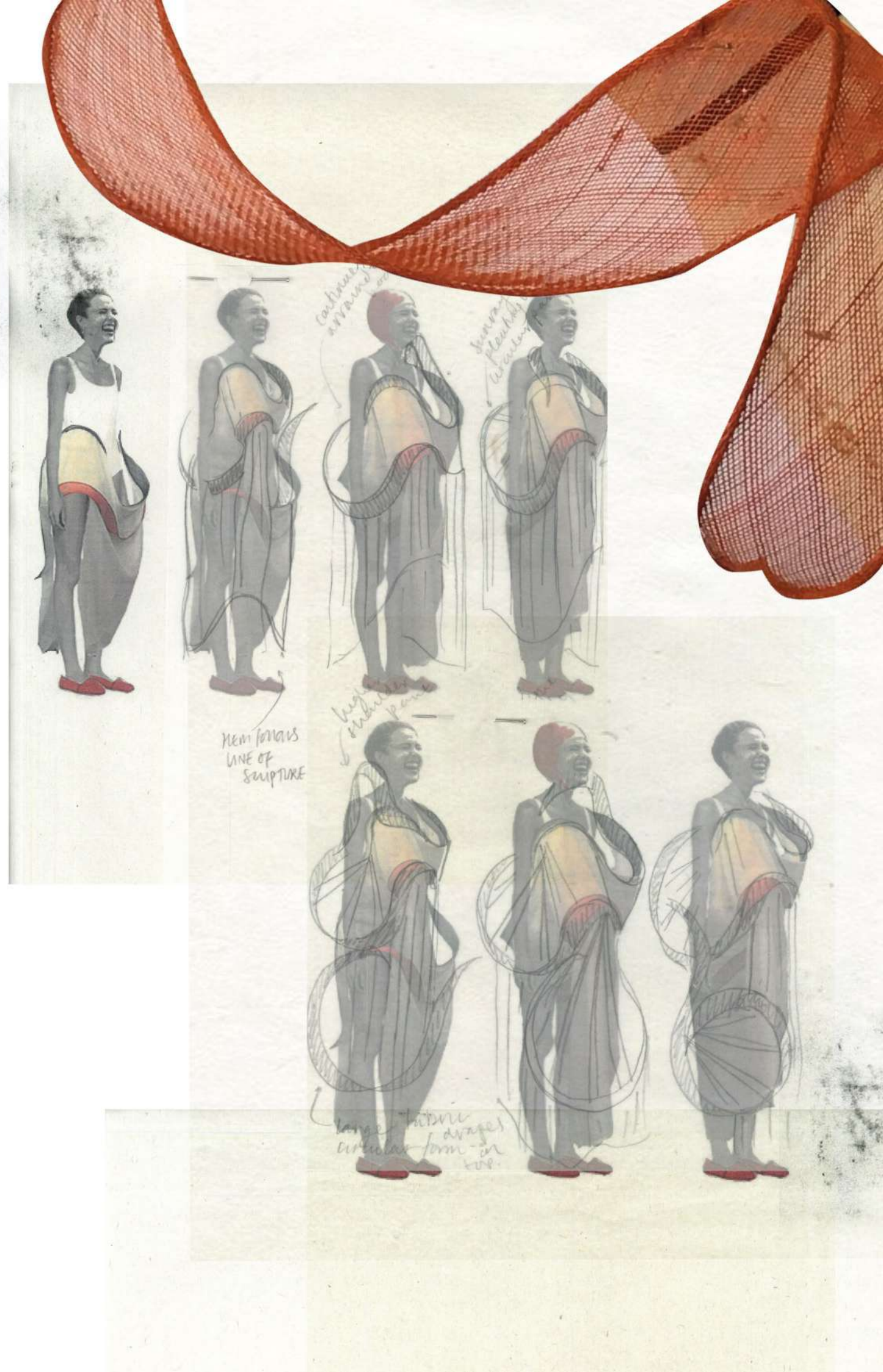


CUT OUTS & ASYMMETRY





'SPHERES AND  
SHAPES LIKE  
CLUBS, THICK,  
SWEEPING,  
DENSE...

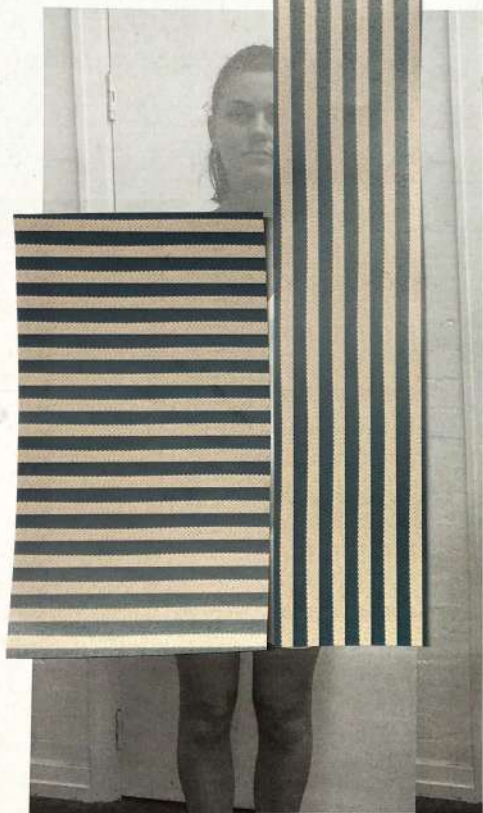




# ABSTRACT SHAPES ON THE BODY



padding  
abstracted  
shape



Archhole?

heavy  
wavy  
padding

Asymmetrical  
padding



padding  
archhole  
lower  
padding

instruction  
- swimsuit  
base layer  
padded  
to fit  
women  
pieces

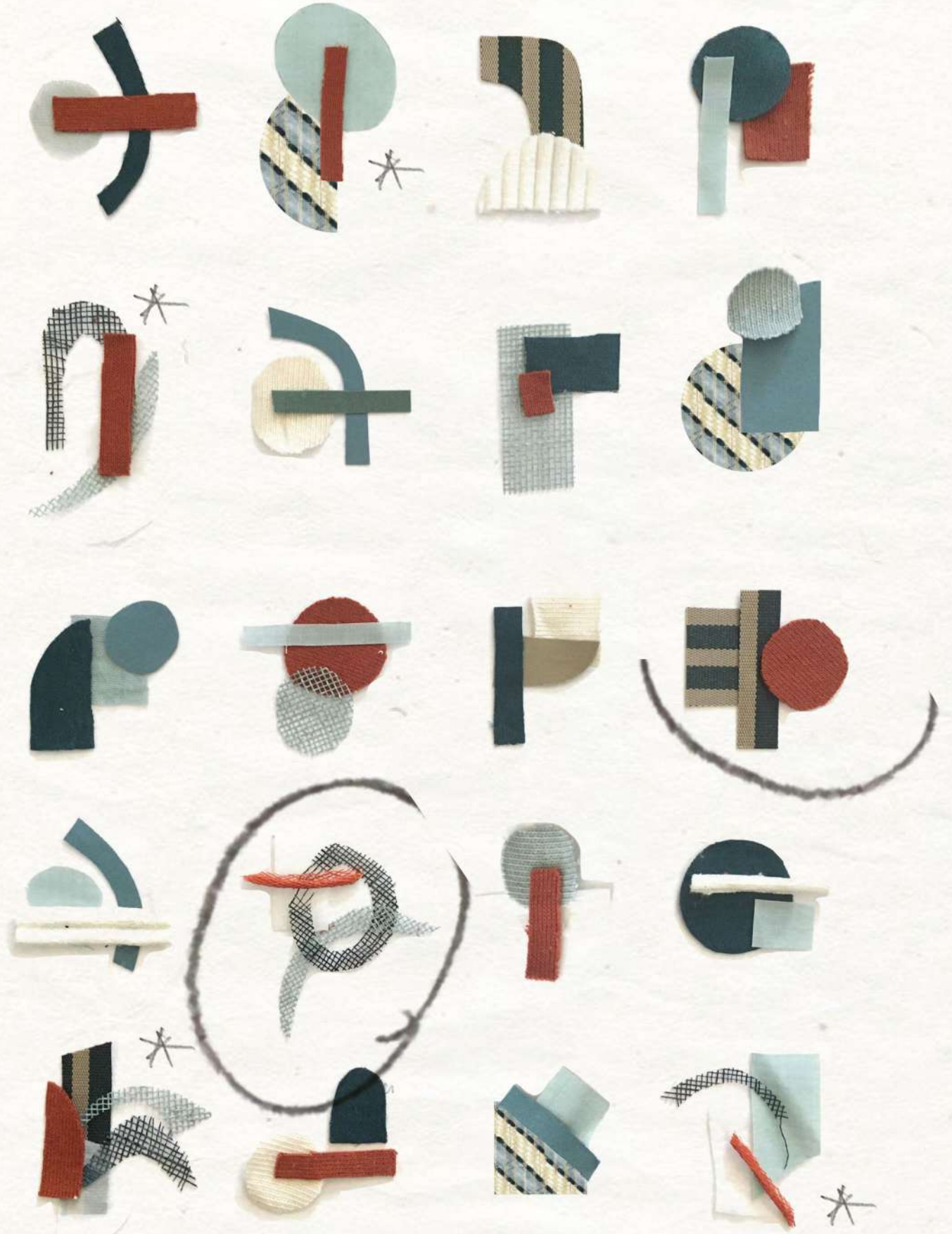
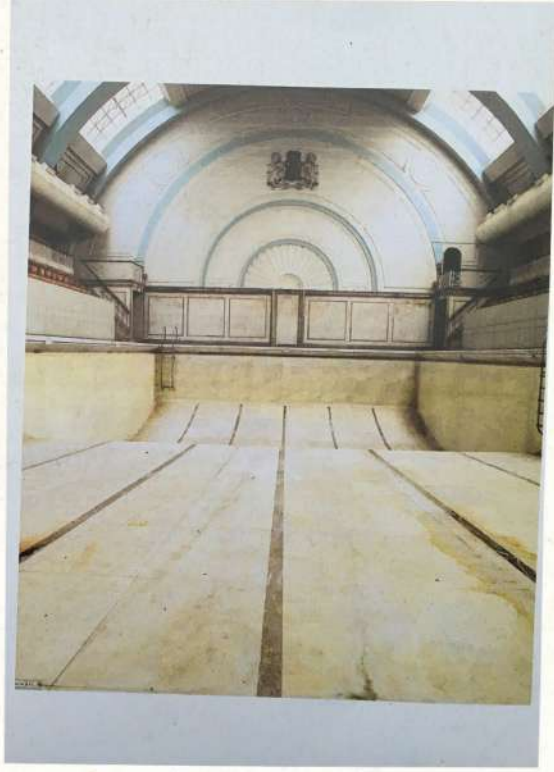
cut  
outs  
\*  
popular  
style  
1930s  
references

Inserted  
padding  
- more wearable  
& moveable





# COLOUR & FABRIC





'WESTERN CITIZENS ACCUSTOMED THEIR EYES  
TO VISIONS OF THEMSELVES AS SHAPES... A BOX,  
CYLINDER, PYRAMID.'



inside  
swimsuit  
is too small  
↓  
pulling  
the  
canvas  
up.



Add  
invisible  
zip.

EXT  
8  
by



inner  
darts  
to be  
tailor  
to be

\*EDITED PATTERN  
TO MATCH LENGTH OF  
CANVAS.





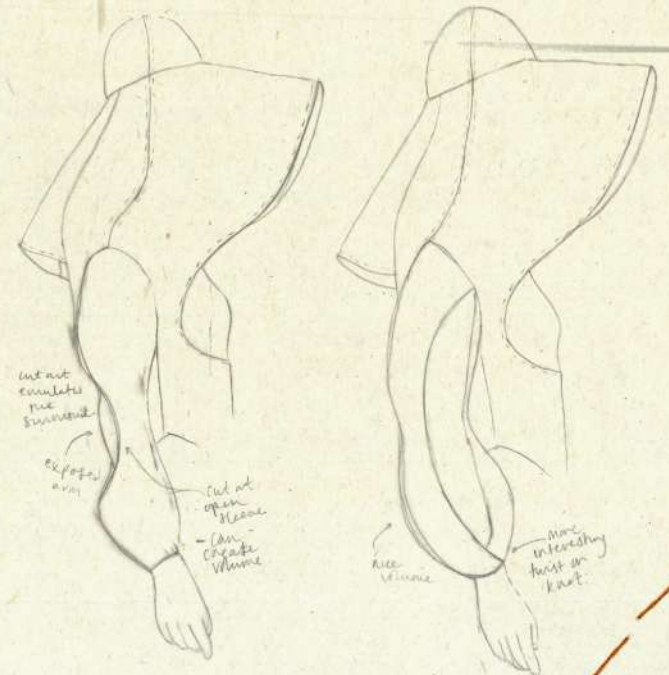
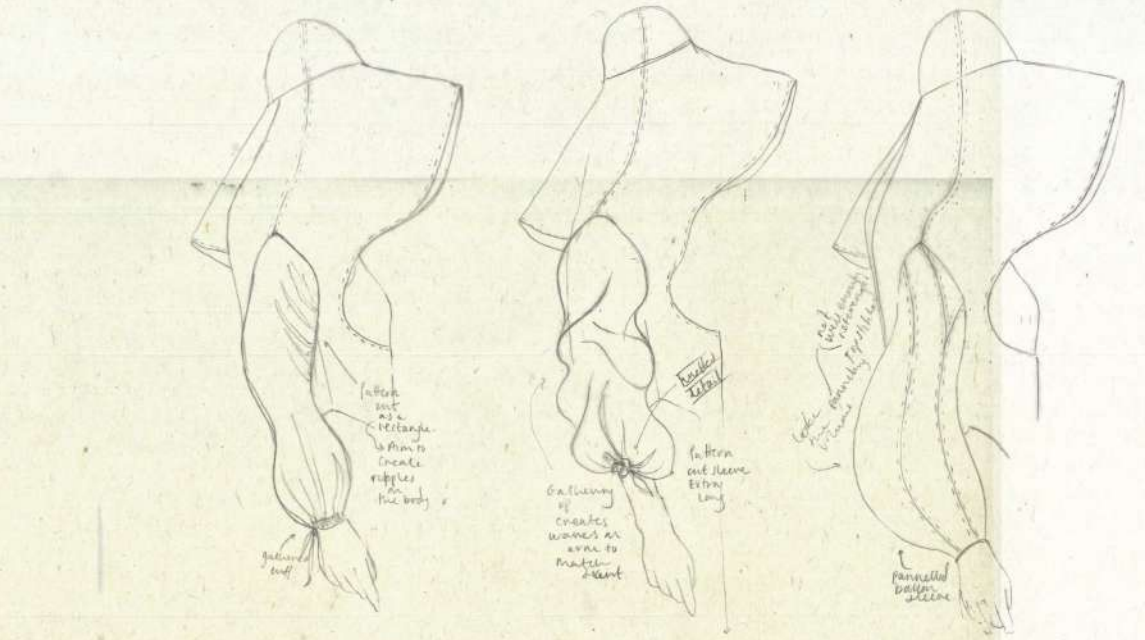
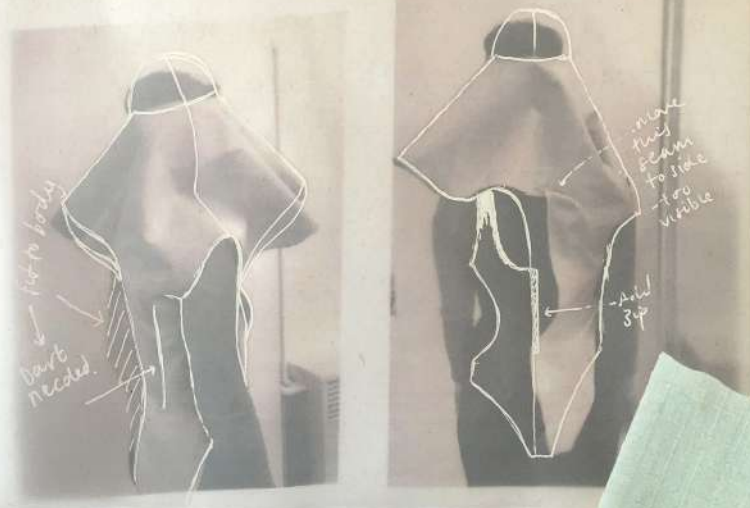
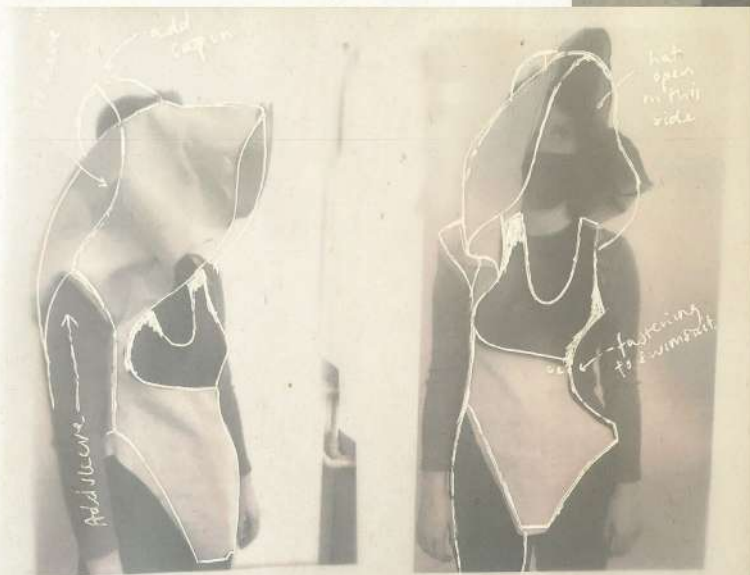


...  
down.

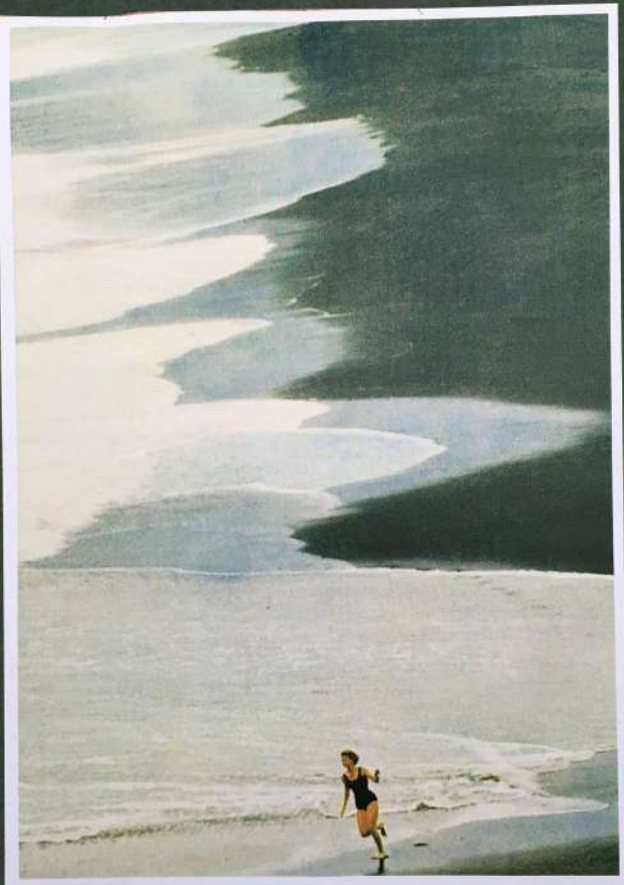
Add  
SIDE SEAMS.

me.

increase  
depth of  
side seam.







WAVE PROCESS

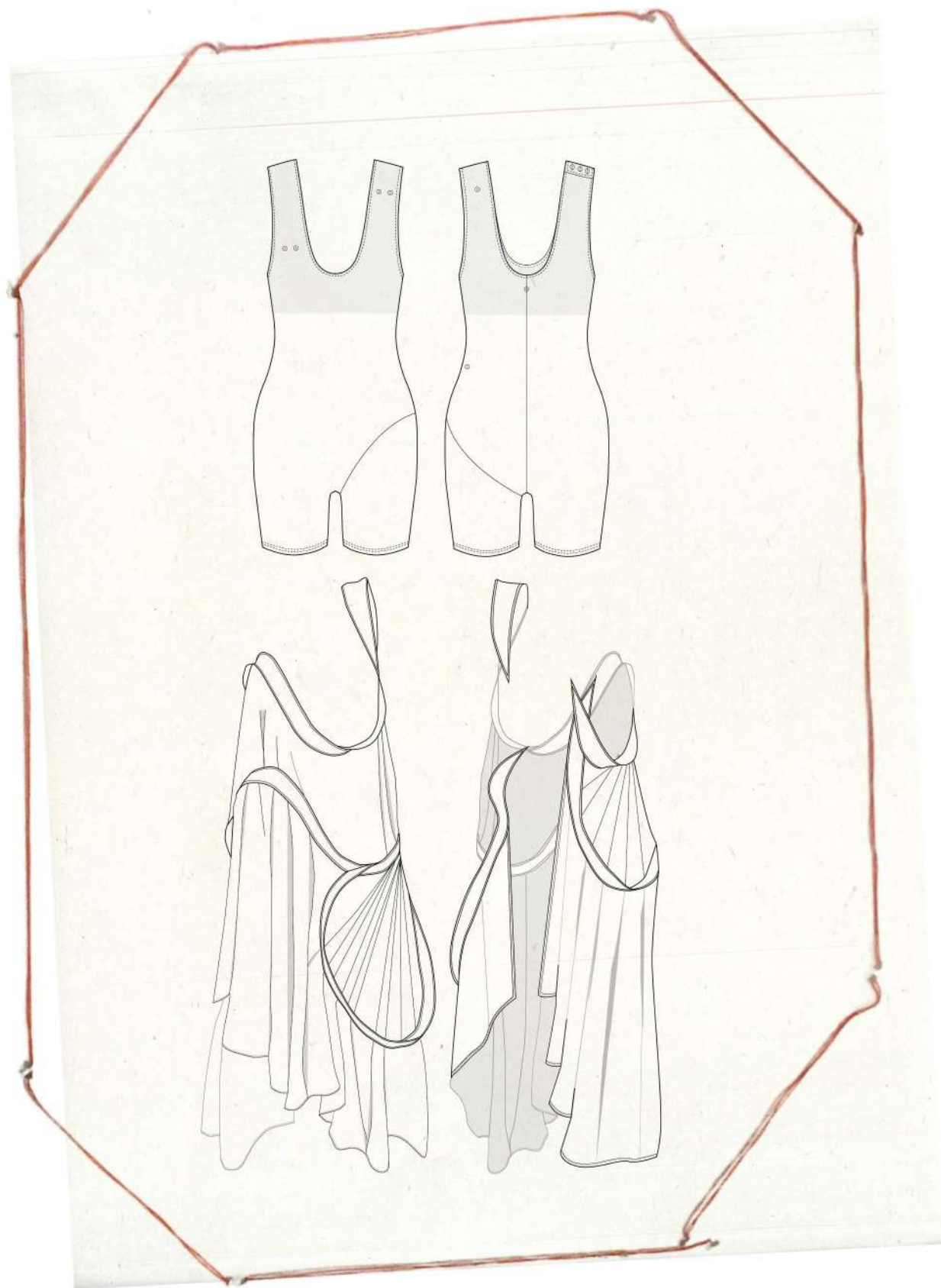




# PHOTOGRAPHIC LINE UP







## LOOK 4

A SCULPTURAL SUNDRESS USING SINAMAY TO CREATE DRAPE AND VOLUME AWAY FROM THE BODY WITH SUNRAY PLEATING DETAILS ON A SHORT STYLE SWIMSUIT.

