

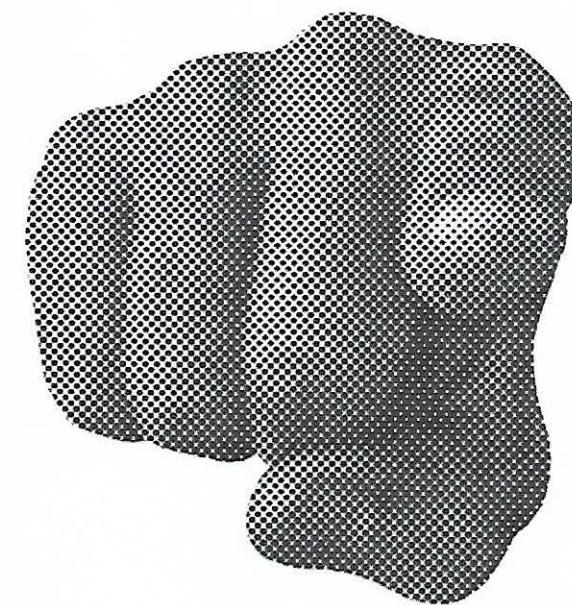
THE PRES- ENTATION OF SELF IN EVERY- DAY LIFE

When you were born, you were thrust onto the stage that is your everyday life. You learnt to play your roles through socialisation, where you mimic those who are in turn enacting their assigned roles in interaction with you. Through impression management, you manipulate others' ideas about you, using a variety of communicative devices and sign vehicles. Your clothing is a costume, a prop, changing with your various roles.

Using a plethora of developed upcycling techniques, your industrialised, mass produced costume will be transmuted. The semantics embedded within your everyday wardrobe will be recontextualised, metamorphosed, and fragmented. The hybridisation of your clothes will result in the amalgamation of your roles.

It will become clear to you that the line between actor and audience was never there, and that you were always both and neither. Your individual identity is an apparition.

You are the crowd.



TYPICAL FABRIC:	100% CASUAL
TYPICAL USE:	RUSSEL ATHLETIC COMPANY
TYPICAL PATTERN(S):	
FORMAL / CASUAL:	
ORIGIN:	
ADDITIONAL COMMENTS:	CREW NECK, COMB, NON ITCHY LATER.

TYPICAL FABRIC:	WEATHER-WEAR
TYPICAL USE:	LEANS CASUAL
TYPICAL PATTERN(S):	
FORMAL / CASUAL:	
ORIGIN:	OUTDOOR ADVENTURE
ADDITIONAL COMMENTS:	AIR PUFFED (CREATED BY THE BULL WEEP WEATHER WARM) ↓ TYPICALLY QUILTED W/ HORIZONTAL STITCH LINES

TYPICAL FABRIC:	WOOL / POLYESTER
TYPICAL USE:	SPORT UNIFORM / CASUAL
TYPICAL PATTERN(S):	TEAM EMBROIDERY
FORMAL / CASUAL:	CASUAL / ATHLETIC
ORIGIN:	1860'S BASEBALL
ADDITIONAL COMMENTS:	CAN BE FITTED OR NON FITTED ↳ DIFFERENT COLORS & CRESTS PLEDGE DIFFERENT ALLEGIANCES

TYPICAL FABRIC:	VARIED
TYPICAL USE:	ATHLETIC
TYPICAL PATTERN(S):	N/A
FORMAL / CASUAL:	CASUAL
ORIGIN:	1870'S
ADDITIONAL COMMENTS:	PRIMARYLY FOR SPORT LARGELY EVERYDAY

TYPICAL FABRIC:	COTTON → JERSEY KNT
TYPICAL USE:	CASUAL / EVERYDAY WEAR
TYPICAL PATTERN(S):	PLAIN & PRINTED
FORMAL / CASUAL:	CASUAL
ORIGIN:	EVOLVED FROM 19TH CENTURY UNDERGARMENTS
ADDITIONAL COMMENTS:	TRADITIONALLY * SHORT SLEEVES * CREW NECK * COLOR-LESS * OPEN PRINTED * EXPRESSIVE MESSAGES

TYPICAL FABRIC:	COTTON / WOVEN CLOTH
TYPICAL USE:	OFFICE WORK
TYPICAL PATTERN(S):	PLAIN / STRIPE / CHECKS
FORMAL / CASUAL:	FORMAL
ORIGIN:	
ADDITIONAL COMMENTS:	TRADITIONALLY: * ONE-PIECE BACK & YOLK * ONE-PIECE SLEEVE * V/ PLACKET * VERY OFTEN BLUE OR WHITE * CUFFS A SLEEVE-END * LONG-SLEEVED * COLLAR & STAND

TYPICAL FABRIC:	GABARDINE / WORSTED WOOL
TYPICAL USE:	WINDBREAKER / RAIN JACKET
TYPICAL PATTERN(S):	N/A
FORMAL / CASUAL:	N/A
ORIGIN:	BRITISH ARMY OFFICIALS
ADDITIONAL COMMENTS:	TRADITIONALLY: * DOUBLE BREASTED * BELTED AT WAIST (IN SELF) * 10 BUTTONS * BUTTONED POCKET * WIDE LAPEL * RAGLAN SLEEVES * KHAKI

TYPICAL FABRIC:	LEATHER
TYPICAL USE:	TO CARRY DOCUMENTS
TYPICAL PATTERN(S):	PLAIN
FORMAL / CASUAL:	FORMAL → B
ORIGIN:	16TH CENTURY LAMP
ADDITIONAL COMMENTS:	TRADITIONALLY * A NARROW, BOX-SHAPED CASE OR CASE * USED MAINLY CARRYING PAPERS

TYPICAL FABRIC:	RIBBED COTTON
TYPICAL USE:	UNDERWEAR
TYPICAL PATTERN(S):	PLAIN
FORMAL / CASUAL:	EMPIRE → FORMAL UNDERWEAR OR CASUAL
ORIGIN:	
ADDITIONAL COMMENTS:	SAME GARMENT USED FOR ATHLETIC WEAR AS USED AS AN UNDER-GARMENT W/ SUITS & DRESS SHIRTS

TYPICAL FABRIC:	VARIETY → COMMONLY WOOL
TYPICAL USE:	RESPECTABLE IMAGE
TYPICAL PATTERN(S):	Pinstripe, plain, check
FORMAL / CASUAL:	FORMAL / BUSINESS WEAR
ORIGIN:	
ADDITIONAL COMMENTS:	TRADITIONALLY: * JACKET & TROUSER IDENTICAL TEXTILE * ACCOMPANIED BY A DRESS SHIRT, TIE & DRESS SHOES * OFFICE JOBS USUALLY REQUIRE THEM

TYPICAL FABRIC:	DENIM (WOVEN COTTON)
TYPICAL USE:	CASUAL WEAR / WORK WEAR
TYPICAL PATTERN(S):	
FORMAL / CASUAL:	CASUAL / WORK / SMART CASUAL
ORIGIN:	LEVI'S STRAUSS. CO
ADDITIONAL COMMENTS:	TRADITIONALLY: * S-Pocketed (FORUMER THANKS TO SOI) * RIVETED * STRAP-DIFF / DURABLE * PARTS THAT WEAR * EVERYONE HAS A PAIR

TYPICAL FABRIC:	LEATHER, CLOTH
TYPICAL USE:	WORN AROUND WAIST → FASTENERS
TYPICAL PATTERN(S):	
FORMAL / CASUAL:	EMPIRE / BOTH / DENIM
ORIGIN:	BRONZE AGE!!!
ADDITIONAL COMMENTS:	USED TO SECURE / HOLD CLOTHING ↓ A LOT OF GARMENTS HAVE BELT LOOPS FOR THEM

TYPICAL FABRIC:	KNITTED COTTON
TYPICAL USE:	SMART CASUAL & ATHLETIC WEAR
TYPICAL PATTERN(S):	PLAIN & STRIPED
FORMAL / CASUAL:	BALANCE
ORIGIN:	19TH CENTURY TENNIS
ADDITIONAL COMMENTS:	* COLLAR * PLACKET NECKLINE * 2-3 BUTTONS (USUALLY) * OPTIONAL C POCKET

TYPICAL FABRIC:	KNITTED WOOL
TYPICAL USE:	POPULAR AMONGST SPORT FANS
TYPICAL PATTERN(S):	ARGENT
FORMAL / CASUAL:	CASUAL / SMART CASUAL
ORIGIN:	POPULAR IN 20TH CENTURY
ADDITIONAL COMMENTS:	KNITWEAR KEM SIMILAR TO A SWEATER BUT W/O SLEEVES. * LOW VANEK W/ KISSING * OPEN ARCADE VARIATIONS * CONSIDERED "PREPPY"

TYPICAL FABRIC:	FLANNEL → SOFT, WOVEN FABRIC
TYPICAL USE:	WORKWEAR / CASUAL ATTIRE
TYPICAL PATTERN(S):	PLAID / CHECK
FORMAL / CASUAL:	CASUAL 100%
ORIGIN:	16TH CENTURY WALES
ADDITIONAL COMMENTS:	ORIGINALLY MADE FROM CARDED WOOL OR WORSTED YARN

TYPICAL FABRIC:	METAL +/OR LEATHER
TYPICAL USE:	TIME TELLING / ACCESSORY
TYPICAL PATTERN(S):	
FORMAL / CASUAL:	DEPENDS ON TYPE
ORIGIN:	DEVELOPED IN 17TH CENTURY
ADDITIONAL COMMENTS:	A PORTABLE TIMEPIECE WORN BY A PERSON. CAN GET VERY ACCURATE



BOY IMITATING HIS DAD'S ROLES AND DERIVATIVE DRESS CODES



Collar Gallery (counterclockwise from bottom left, then center). **1.** THE [unclear] types and can be worn with any style of suit. **2.** THE CUTAWAY [unclear] of Windsor, is usually worn by thin-faced men with a predilection for [unclear] by Brooks Brothers from an English polo shirt that had collar [unclear] [unclear] Ivy League style. **4.** THE TAB COLLAR, with snap buttons, also first worn by the Duke of Windsor. **5.** THE ETON COLLAR

nety of
s by the
AR was
quin-
out the



Good range of shirts &



Cut down
press
stitch
to
ignore
graph
line.
of old shirts
+ turn
to another
size
Cut my pattern
from this



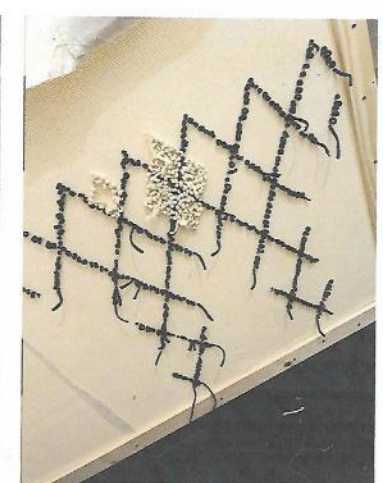
1 Draw on vellum paper & ribbon to create template



2 Spread it flat like a drum. Begin tying



3 Right-side of diamond row done



4 Begin cream diamonds (2 diamonds each side of line. Right side)



5 Ribbing (cream x1, dark navy x1, light navy x1, cream x3)



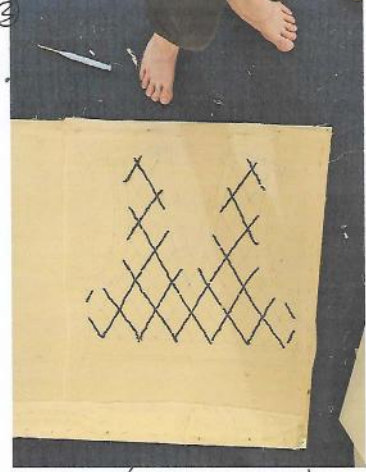
6 Ribbing neck & armholes. Right side.



7 Wrong side ribbing only when red/purple left



8 Close up wrong side ribbing (cream x1, navy x1, dark navy x1, cream x1, navy x1, cream x1)



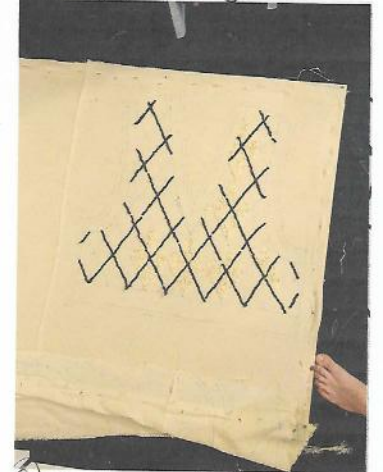
9 Start w/ the darkest navy/best diamonds & fill in



10 Close up -> Wrong side



11 Wrong side.



12 More cream diamonds. Wrong side. Make sure cream



13 Ribbing done - as fast.



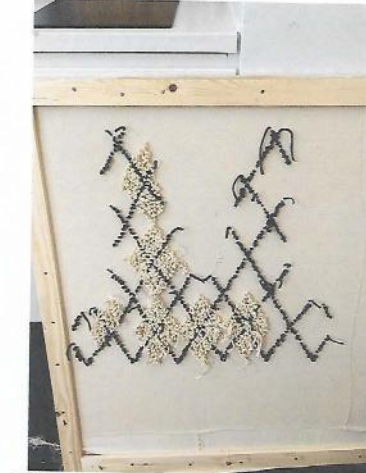
14 Bottom ribbing (cream x1, D. navy x1, L. navy x1)



15 Begin wine red/purple wrong side.



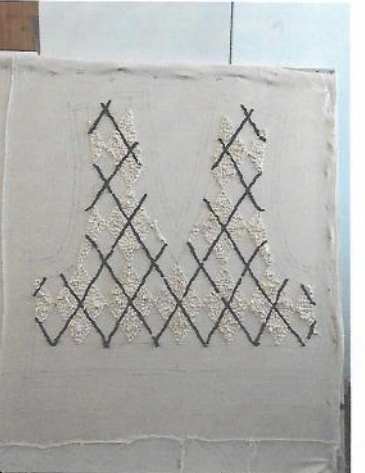
16 Close up wrong side



17 Note the cream is every other diamond. Right side



18 Close up right side.



19 Looking good!



20 Begin lighter navy. Right side



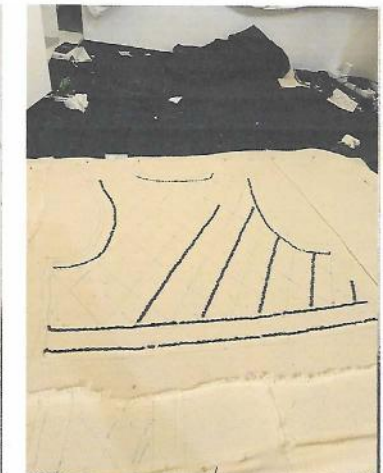
21 Done! Right side



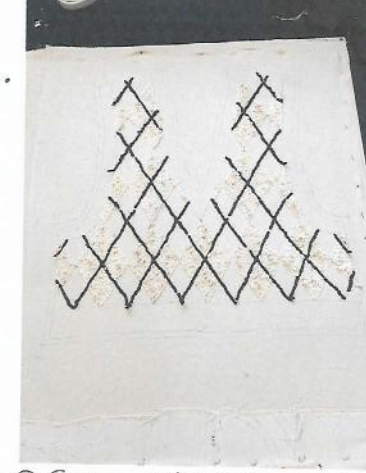
22 Done! Wrong side Blue & Purple Valtenele



23 Draw back onto marks cloth



24 Begin w/ navy -> Ribbing & diags.



25 Cream main body finished Wrong side



26 Cream main body finished, right side



27 Finished navy Right side. Ribbing



28 Right-side. Navy done. -> symmetrical



29 Close up done



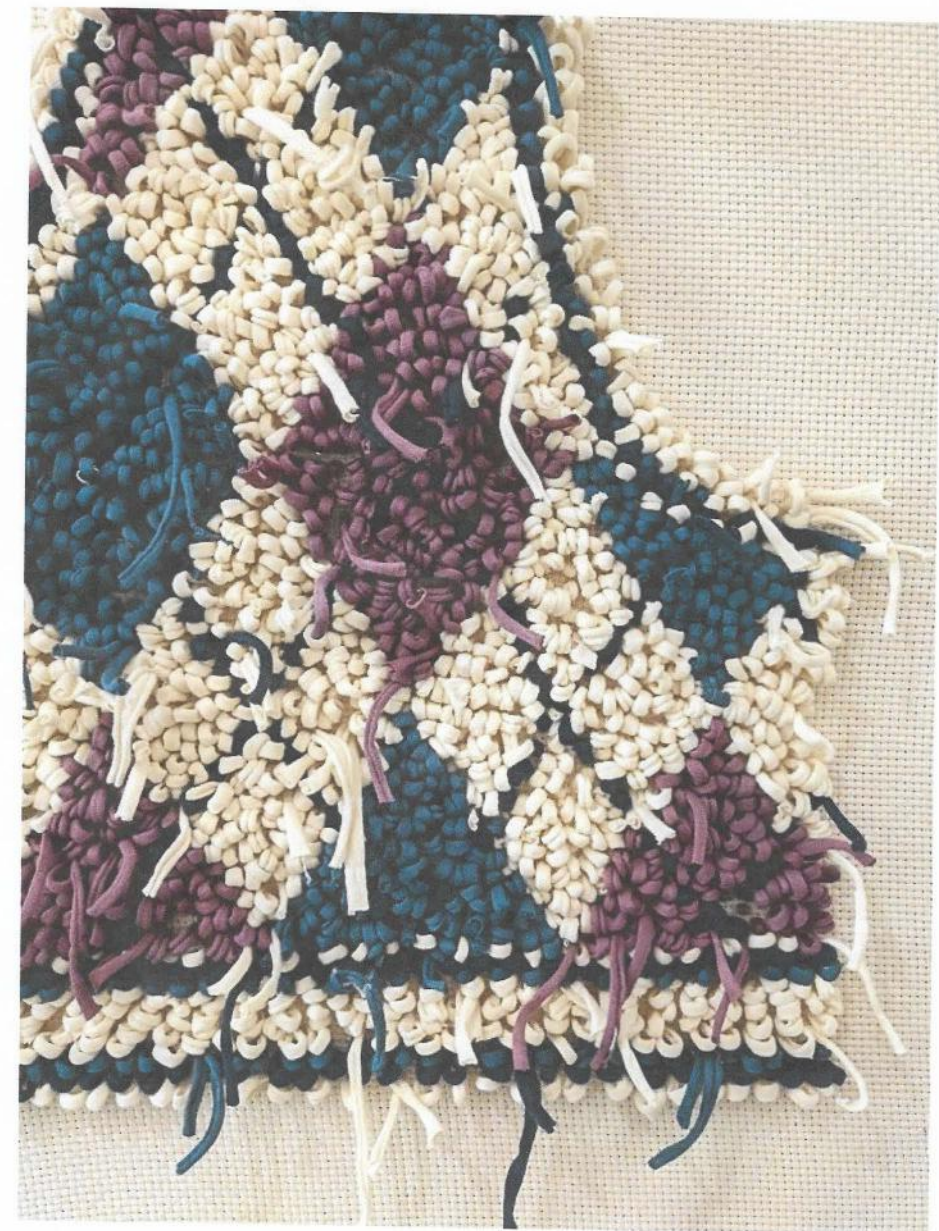
30 Close up ribbing & diamonds



31 Done! direction at a fine fine



32 Diamonds & cream finished -> Wrong side



**VINTAGE T-SHIRTS DYED, SHREDDED, AND HAND-TUFTED
HYBRIDISING GARMENTS BY DECONSTRUCTING ONE TYPE IN THE PROCESS OF CREATING ANOTHER**



05/04/2022 08:35 Routing Ver: 90

812-GB-BN2 4FR

GB-BN2 4FR

Next Day
SERVICE

1550 TRACK

3323 7504 84 J

TRENCH COAT

INTERNAL REF: MB01

CONTACT MR. JOSHUA SAMUELS
PHONE 07720643337

UNITED KINGDOM

BN2 4FR

BRIGHTON

MR. JOSHUA SAMUELS
415 7 THE FURLONG

PACKAGES
1 OF 1
TOTAL HEIGHT
0.41 KG

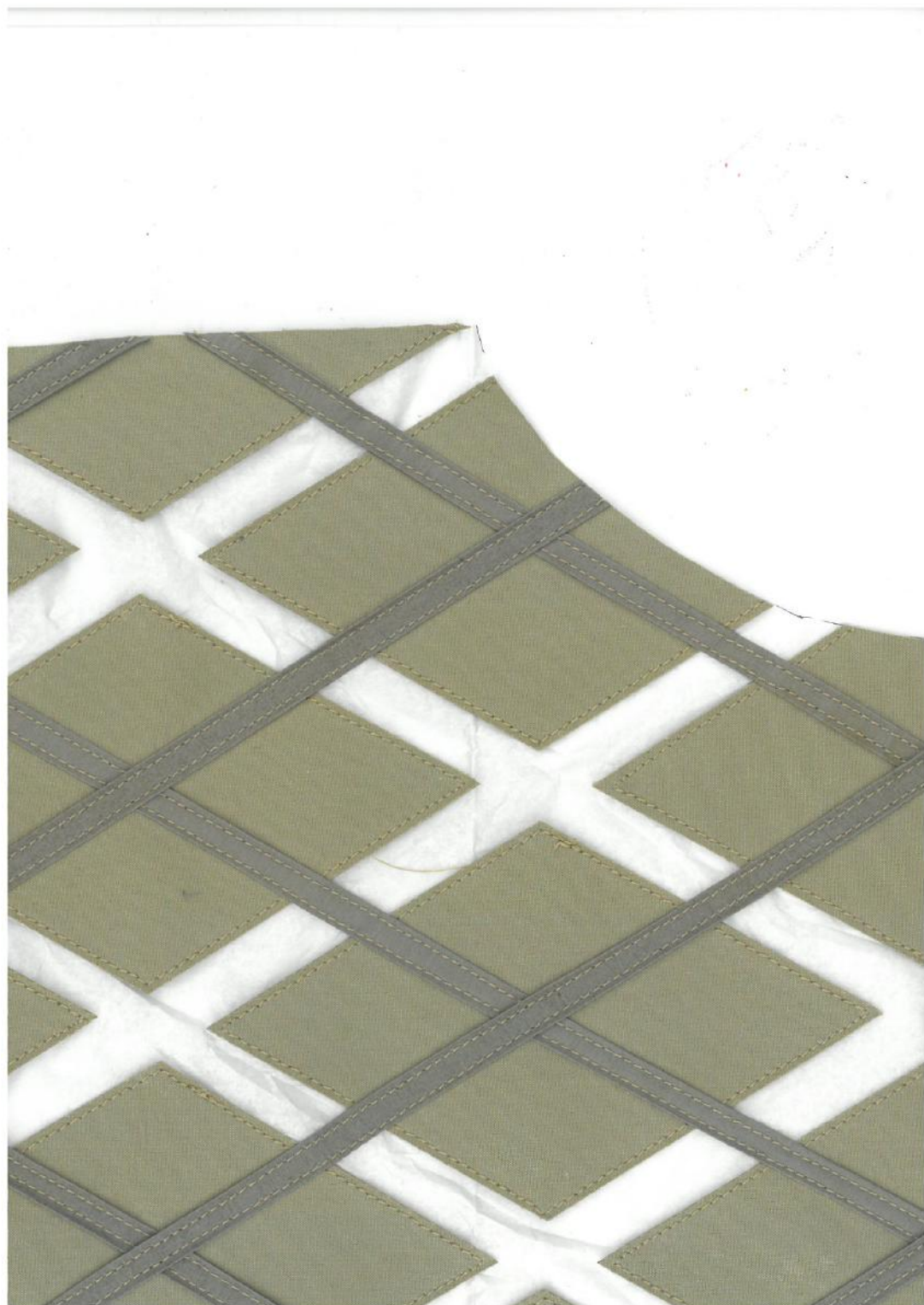
PHONE 0800000000
REFERENCE MB01243379
DELIVERY ADDRESS

DPD

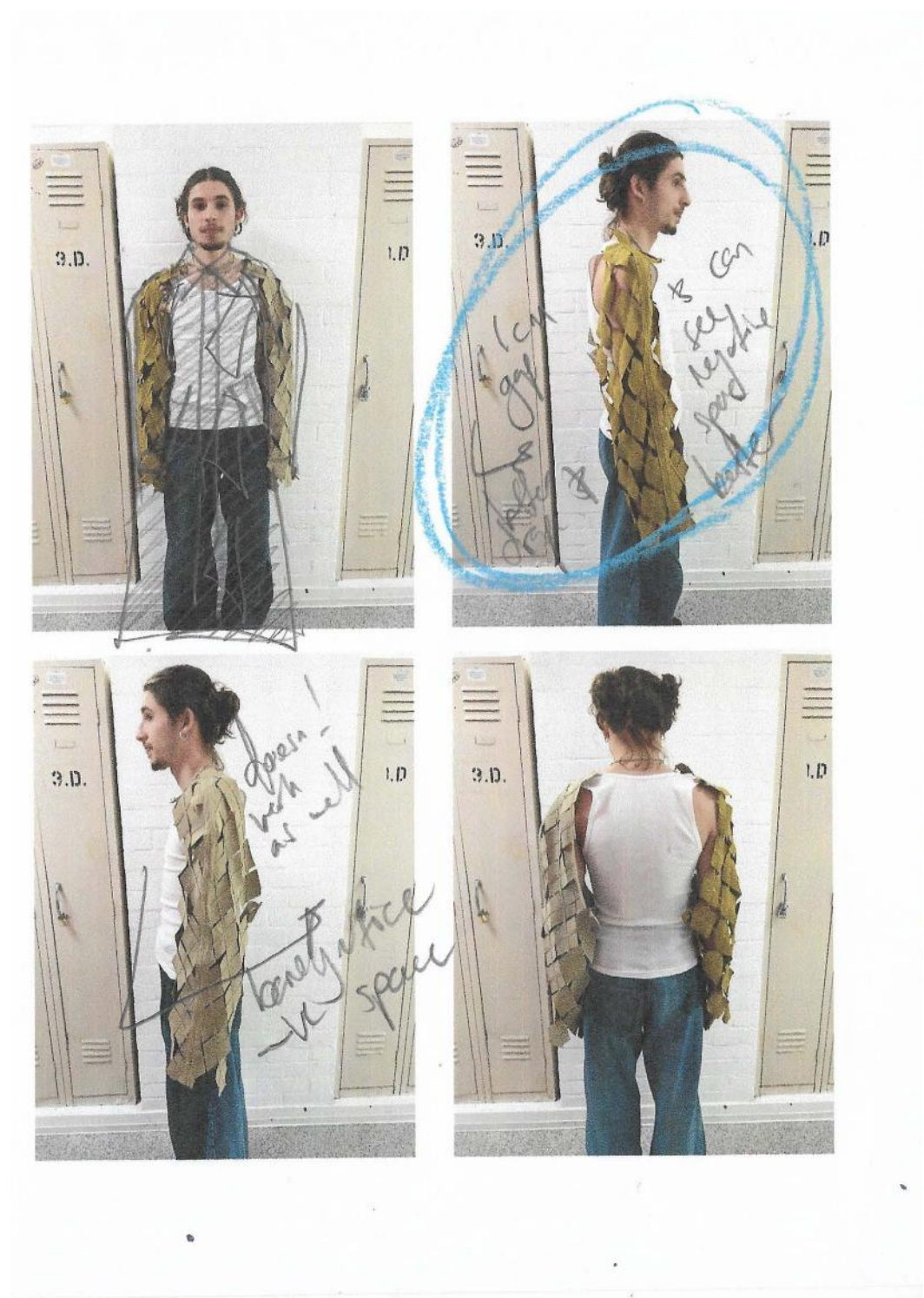
www.dpd.co.uk

SENDER ACCOUNT 3323

MOLTON BROWN

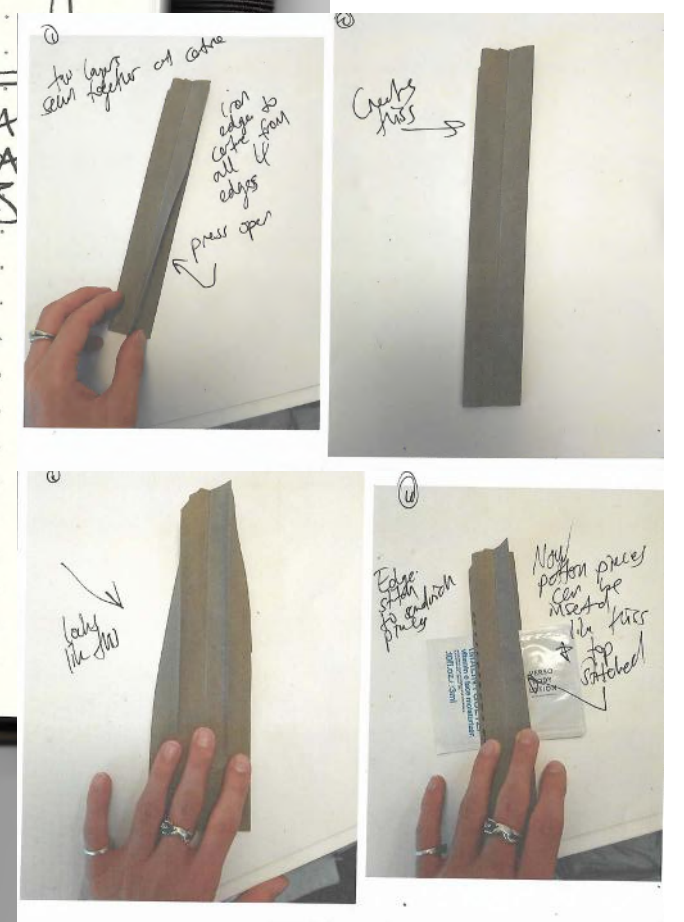
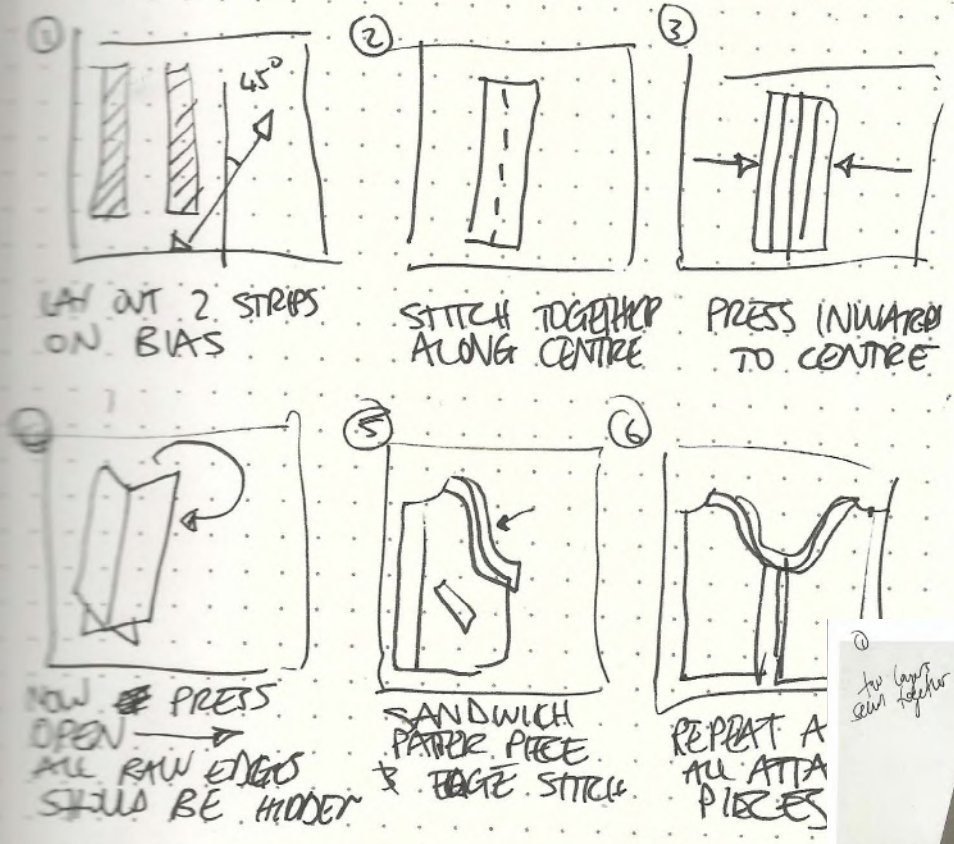


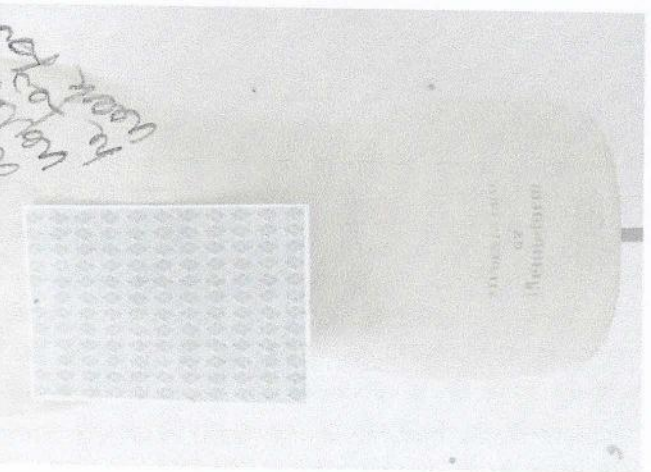
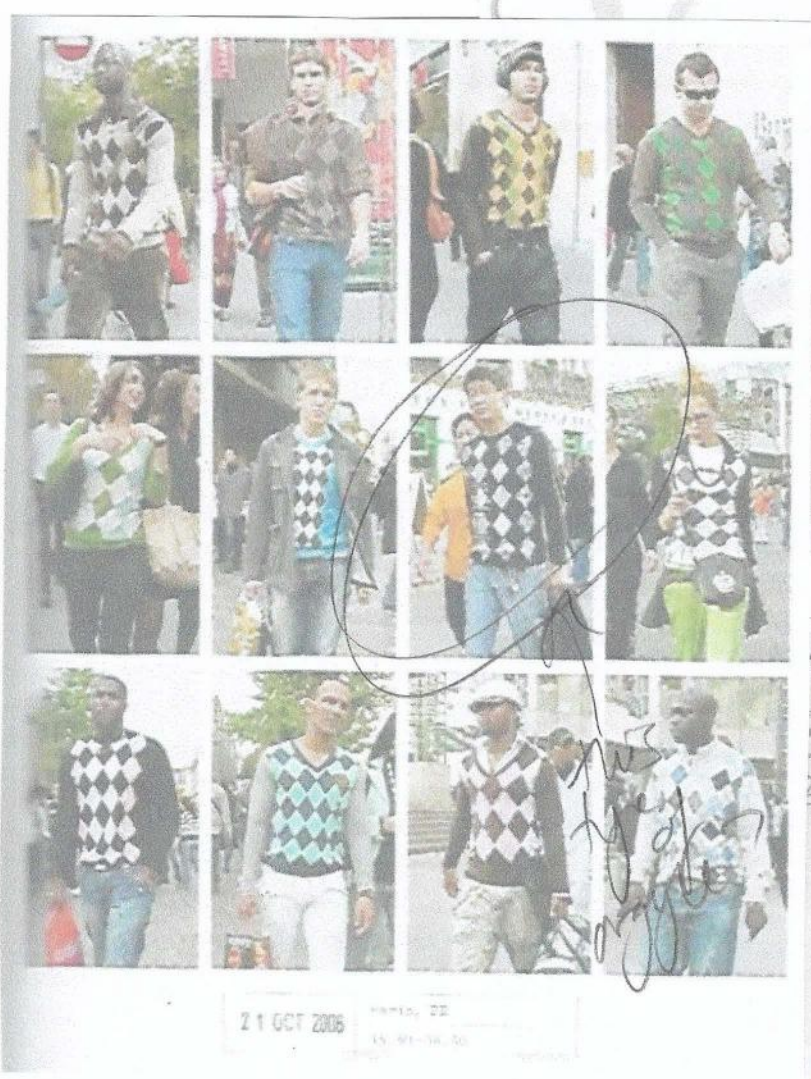
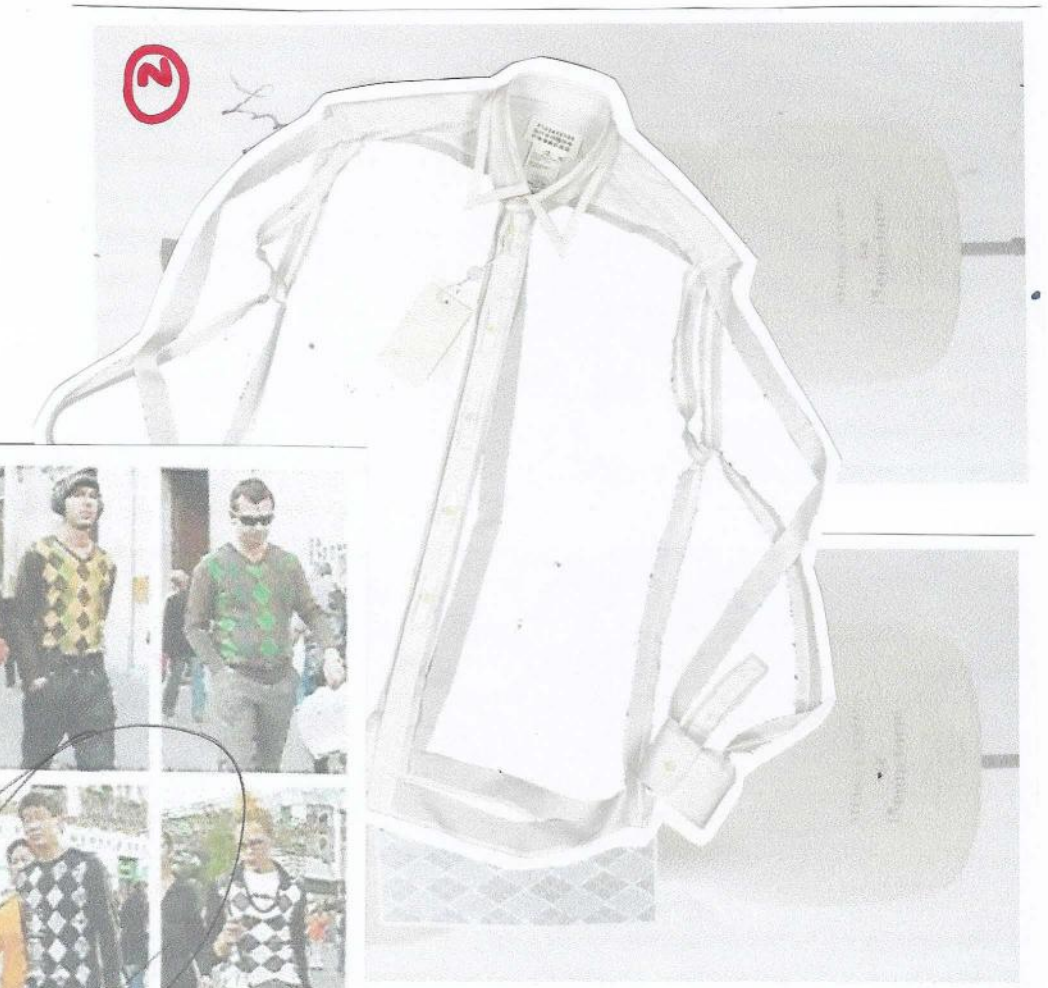
RECONTEXTUALISATION OF ARGYLE PATTERN THROUGH TEXTILE DEVELOPMENT. HYBRIDIZING KNITWEAR PATTERN WITH TRENCH COAT LANGUAGE





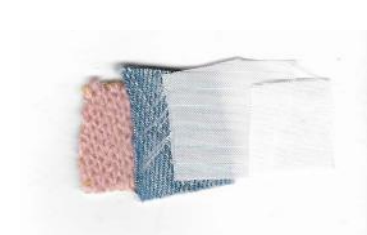
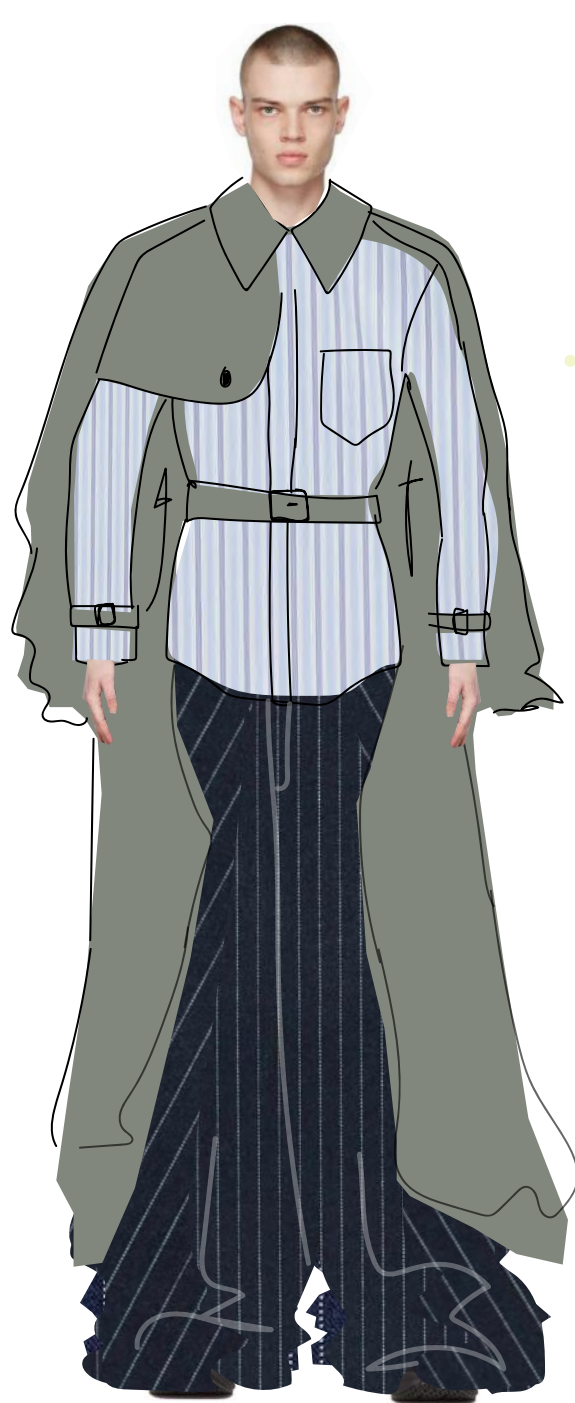
HOW TO FINISH ARGYLE COAT W/ BIAS BINDINGS





ARGYLE PATTERN
RECONTEXTUALISED
IN/ UPCYCLED SHIRTING





1.1 ARGYLE COAT: DEADSTOCK COTTON MADE INTO FABRIC WITH NEGATIVE SPACE. **1.2 BOXY SHIRT:** PRE-LOVED DRESS SHIRTS (BLUE) PATCHWORKED USING HORIZONTAL AND VERTICAL LINES. **1.3 LEATHER JEANS:** LEATHER FROM FOUND SOFA PATCHWORKED USING HORIZONTAL AND VERTICAL LINES

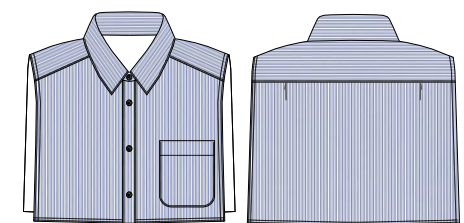
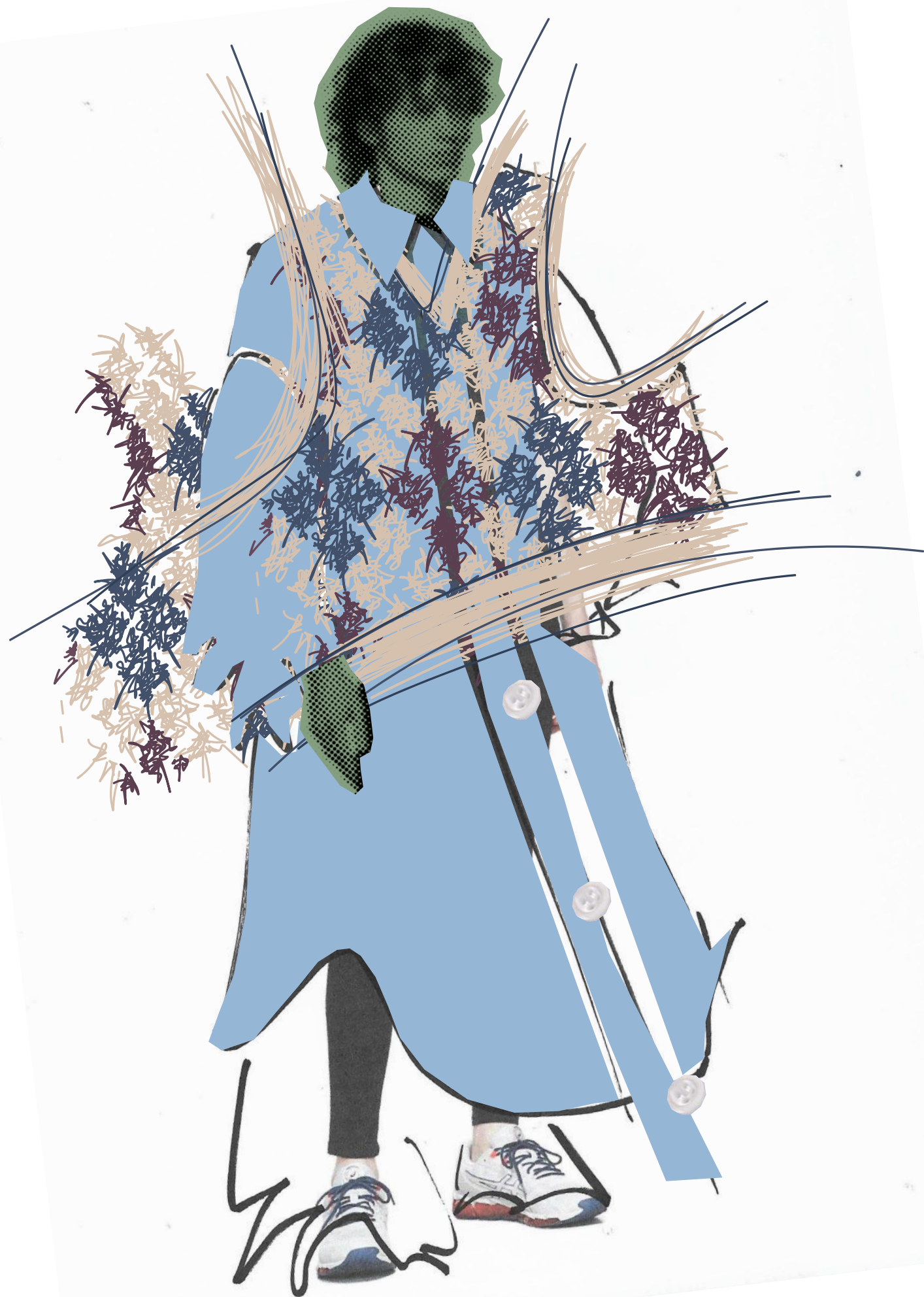
2.1 TAILORED VEST: VINTAGE WEDDING DRESS DECORATED WITH STITCHING AND 100% WOOL NAVY PINSTRIPE FABRIC (DEADSTOCK). **2.2 ARGYLE VEST:** LASER CUT PRE-LOVED SHOWER CURTAIN AND COTTON RIBBING. **2.3 MICRO JEANS:** DAMAGED JEANS SHREDDED AND WOVEN.

3.1 SHIRT/TRENCH HYBRID: DEADSTOCK COTTON AND DEADSTOCK COTTON SHIRTING. **3.2 PANELLED TROUSER:** PANELLED FROM PRE-LOVED WOOL PINSTRIPE TROUSERS

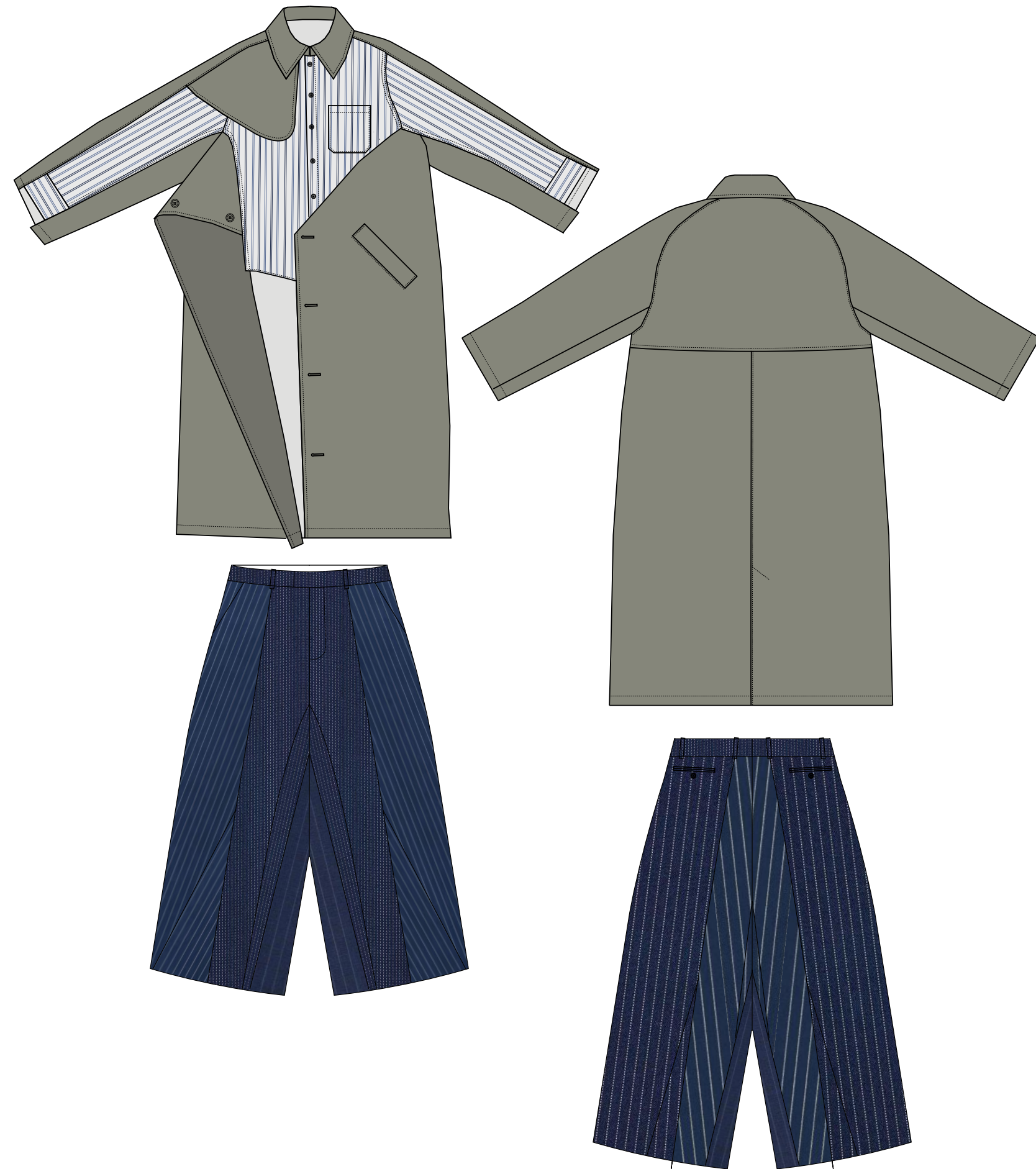
4.1 TUFTED VEST: VINTAGE T-SHIRTS DYED, SHREDDED AND RUG TUFTED. **4.2: OVERSIZED SHIRT:** PRE-LOVED DRESS SHIRTS PATCHWORKED WITH EXISTING PATTERNS. **4.3: SHIRT BIB:** MADE FROM PRE-LOVED DRESS SHIRT. **4.4: WOOL JEANS:** MADE FROM DEADSTOCK PINSTRIPE WOOL.

5.1 STRIPED JUMPER: MADE FROM VINTAGE KNITWEAR, HAND-FELTED INTO STRIPED PATTERN. **5.2 ARGYLE SHIRT:** PRE-LOVED SCHOOL SHIRTS MADE INTO FABRIC WITH NEGATIVE SPACE. **5.3: PUFFER JEANS:** VINTAGE NYLON SHOWER CURTAINS SUBLIMATION PRINTED WITH DENIM TROMPE L'OEIL EFFECT.

6.1 OVERSIZED HOOD: VINTAGE NYLON FROM TENTS OVERDYED. **6.2 INSIDE OUT BLAZER:** VINTAGE SUITS AND SCREEN PRINTED SILK FROM VINTAGE WEDDING DRESS. **6.3 TRENCH CARGOS:** DEADSTOCK COTTON MADE INTO OVERSIZED CARGOS WITH SCALED TRENCH DETAILS.



4.1 TUFTED VEST: VINTAGE T-SHIRTS DYED, SHREDDED AND RUG TUFTED. 4.2: OVERSIZED SHIRT: PRE-LOVED DRESS SHIRTS PATCHWORKED WITH EXISTING PATTERNS. 4.3: SHIRT BIB: MADE FROM PRE-LOVED DRESS SHIRT. 4.4: WOOL JEANS: MADE FROM DEADSTOCK PINSTRIPE WOOL.



3.1 SHIRT/TRENCH HYBRID: DEADSTOCK COTTON AND DEADSTOCK COTTON SHIRTING. 3.2 PANELLED TROUSER: PANELLED FROM PRE-LOVED WOOL PIN STRIP TROUSERS