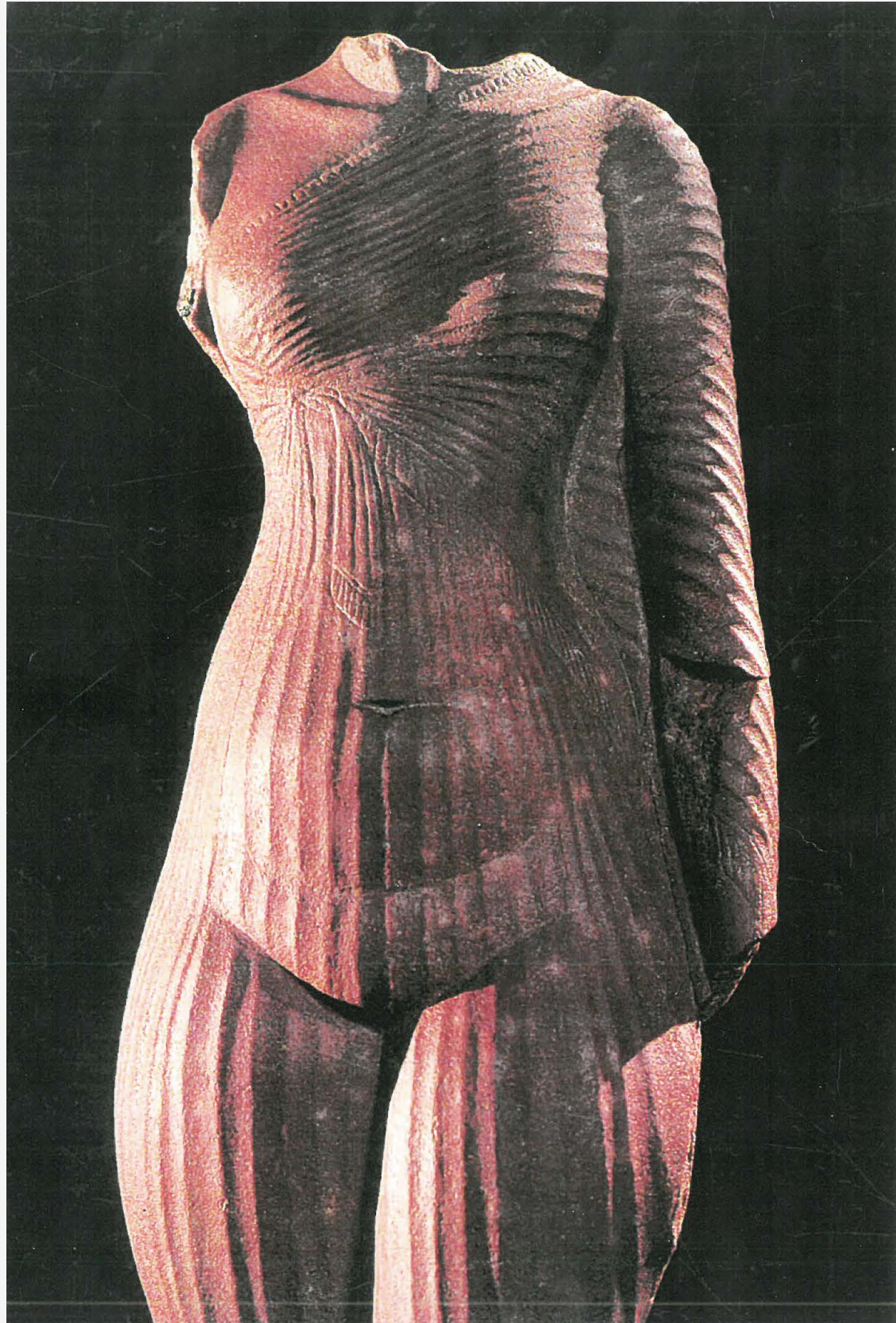


FABRIC BECOMING THE BODY.





SCULPTING

AWAY FROM THE BODY



EVEN
DRAPE
DISTANCE
WITH
EACH
BONING
PIECE

LIKE HOW COMING
AWAY FROM THE
BODY.

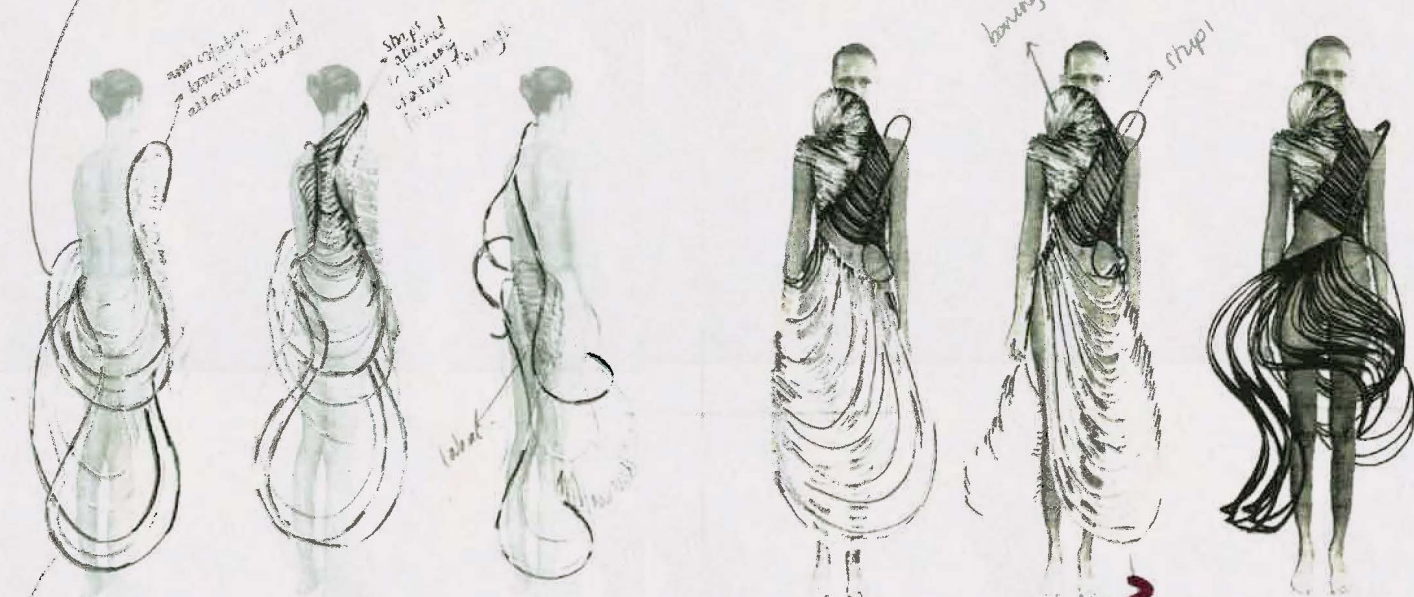
COME
AWAY
FROM
THE BODY
MORE

LOVE
THE
SHAPE/
DRAPE
HERE



come away from the
body more

DRAMATIC.



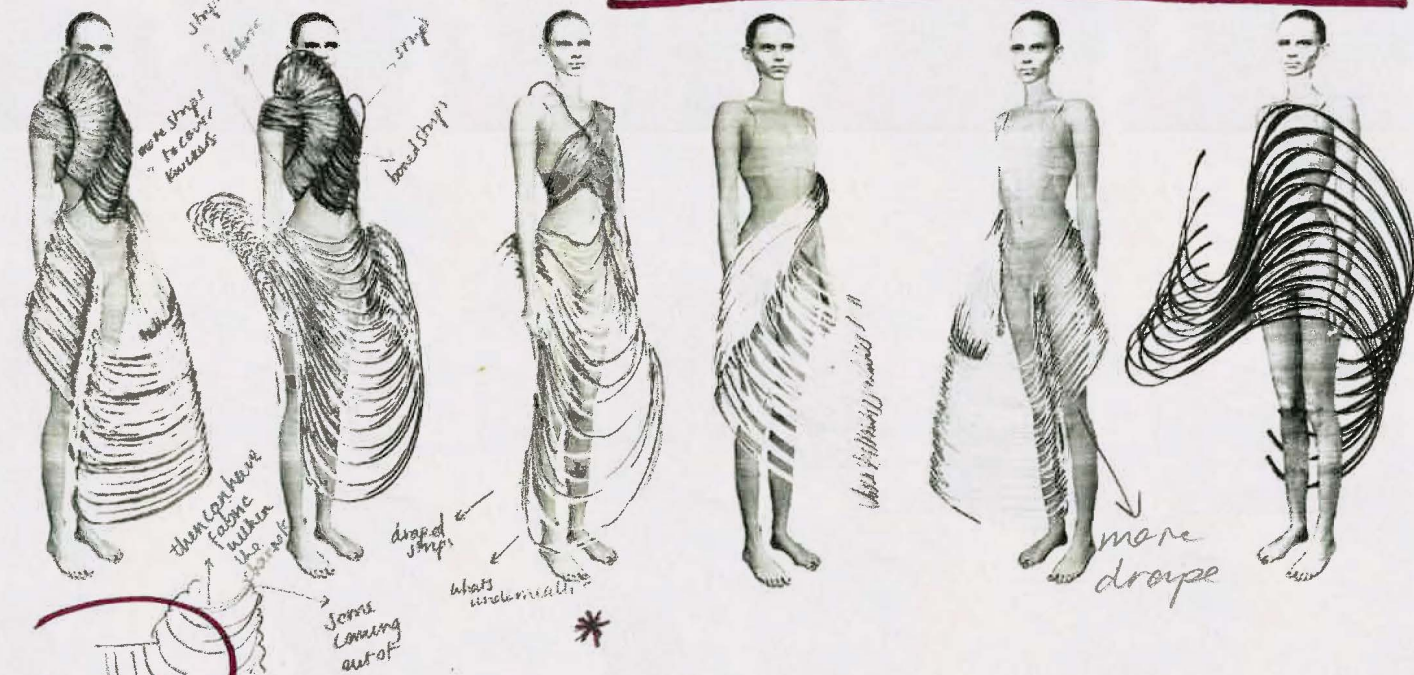
WHAT'S COVERING
HERE?

ATTACHED?

KNICKERS?
HOTPANTS?



**WHAT'S UNDERNEATH?
HOLDING BONING?**

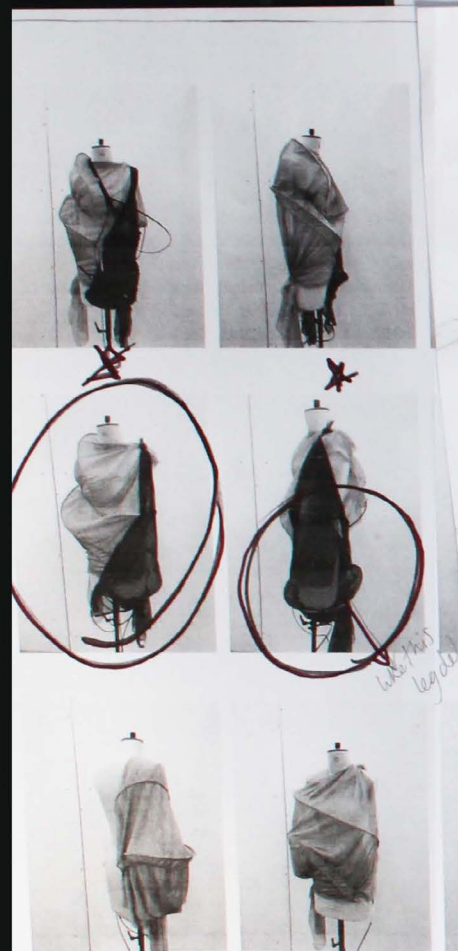
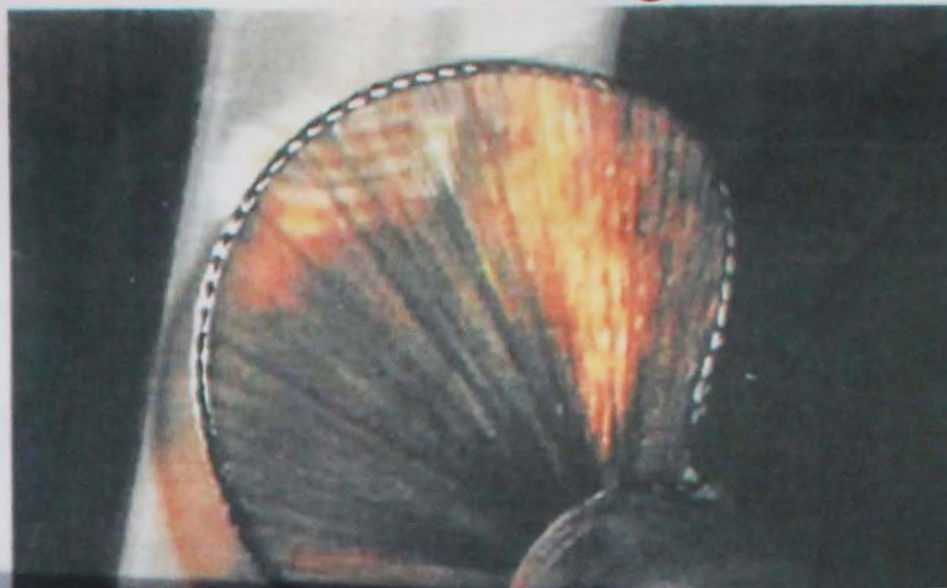


**WHAT'S HOLDING BONING
AWAY FROM BODY?**

③ REFERENCE

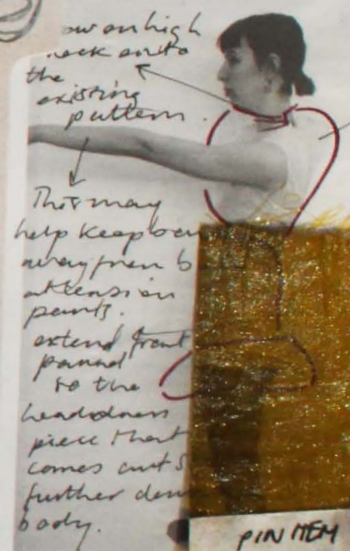


LOG 1 (3) REFERENCE



TAILE 1-LOOK 3.

LOOK ③

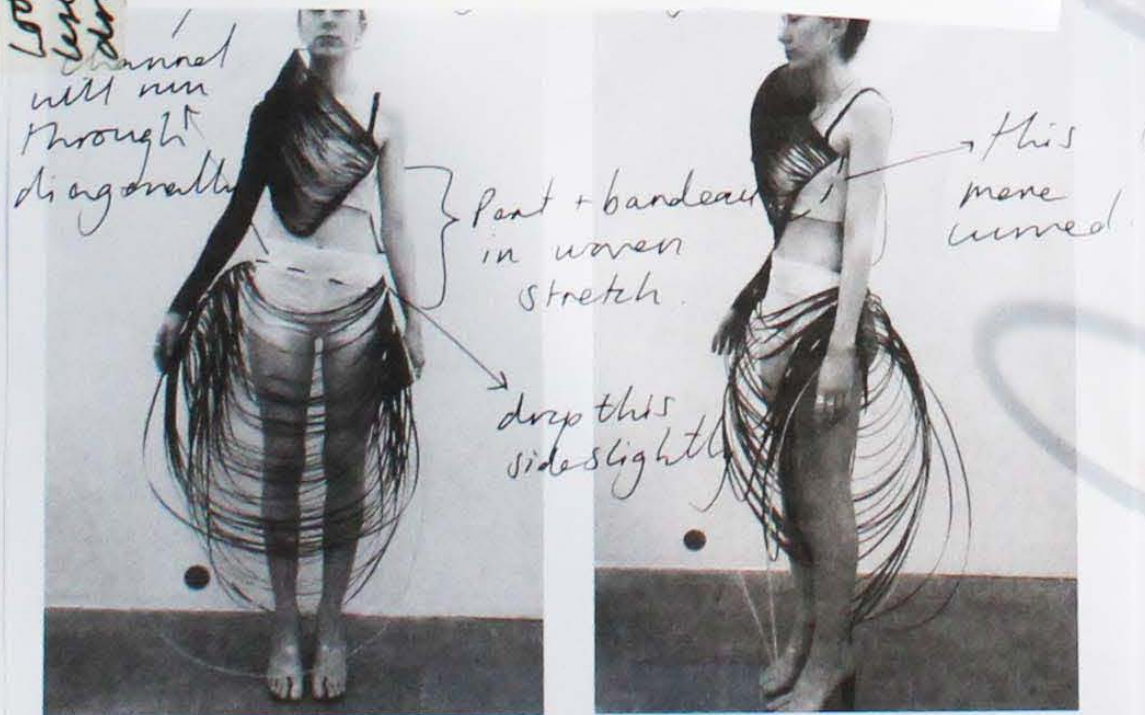


- ① SLUPTING AWAY FROM THE BODY.
- ② FABRIC BECOMING THE BODY.
- ③ PARTLY COVERING.
- ④ TENSION.
- ⑤ BOWING, SHAPING THE BODY.



- less draped at top
- less dense at bottom.

LOOK 1: Top strips need to go into side seam less harsh, make more curved to replicate drape. Flat bowing works better - no knots.



3D EXPERIMENTATIONS



— EXPERIMENTING WITH SHEER FABRIC & BONING/TWISTING.

— SHEER FABRIC + BONING HIGHLIGHTS + DEFINE THE SILHOUETTE WEAR.

↳ Fabric becoming the body.

STRIPS REF.



Binding facing sewn onto a curve - binding facing straight cut not curved.

move these towards shoulder away from face

ADD A SLEEVE

Strips to be stitched asymmetrically into the bandeau.

this will be bandeau exposed

extend

SAMPLE: BINDING FACING SEWN ONTO JERSEY BONING PANEL.



COMMON WAYS: FABRIC DECISIONS

LOOK 1:

- DUCRESS BITTER CHOCOLATE SATIN
- OLIVE/GOLD SILK WREATH.
- JITTER BLACK VELVET.

1571K

LOOK 2:

- OX BLOOD
GEORGETTE.
- RUST SHEER
JERSEY.
- I'M DYING
SATIN STRETCH
DEADSTOCK
FABRIC TO
OX BLOOD.

GEORGETTE

LOOK 3:

- GREEN/
GOLD SILK
TATTA.

FROSTICK

TAFFETA

DEAOSTEC

LOOK 4:

- TUBERCLE
- BROWN LEATHER.
- SHEER BIRK JERSEY.

LEATHER



INTENSIV GATHERED
AREA WORKS WELL



WHAT WILL IT BE?
DRESS? TOP?

BONING +
GATHERED
DRAPE
WORKS
WELL!



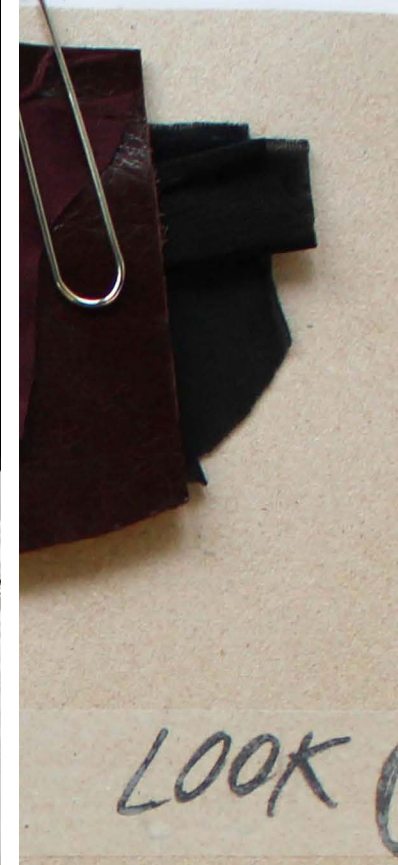
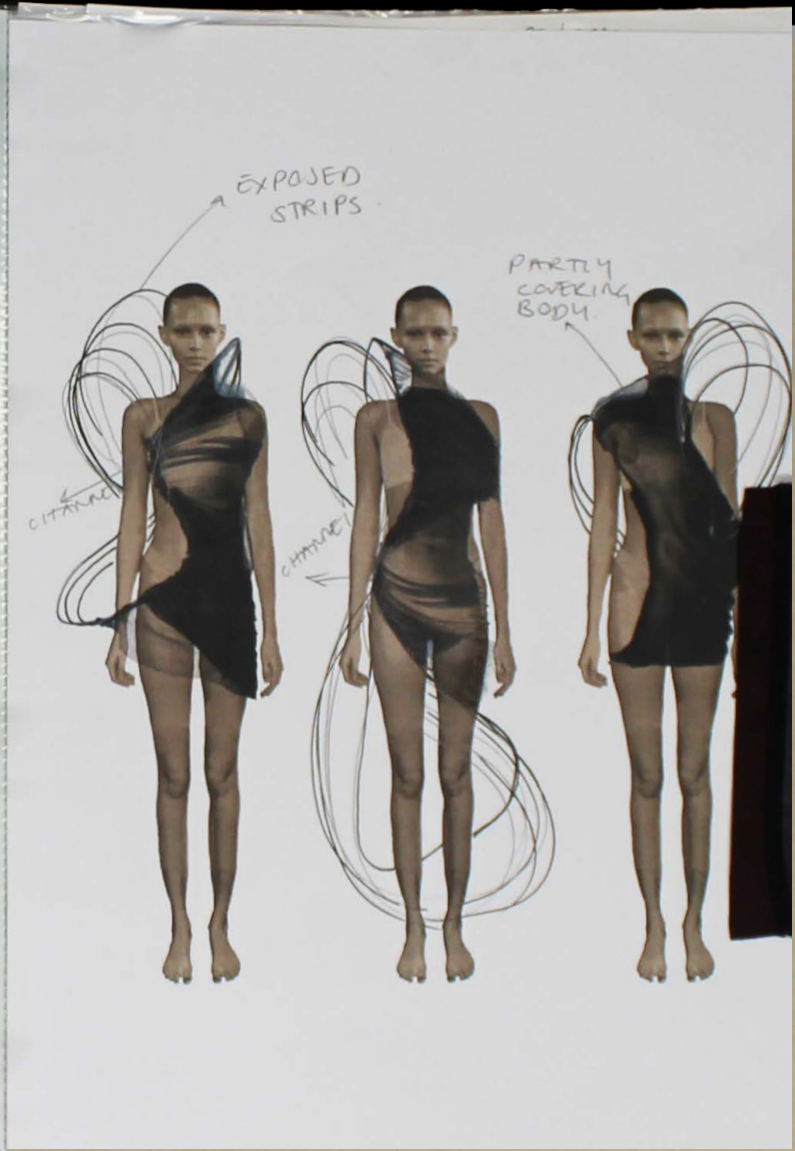
LOVE
SHAPE CREATED.



LOVE THIS.
MORE GATHERS

INTENSIV

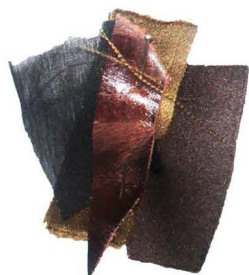






①

OLIVE GREEN
100% SILK
BROWN LEATHER.



②

OK BLOOD GEORGETTE



③

GREEN/OLIVE SILK
TAFFETA



④

AUSBERGUNG SILK
WINE LEATHER.



⑤

WINEK JERSEY.

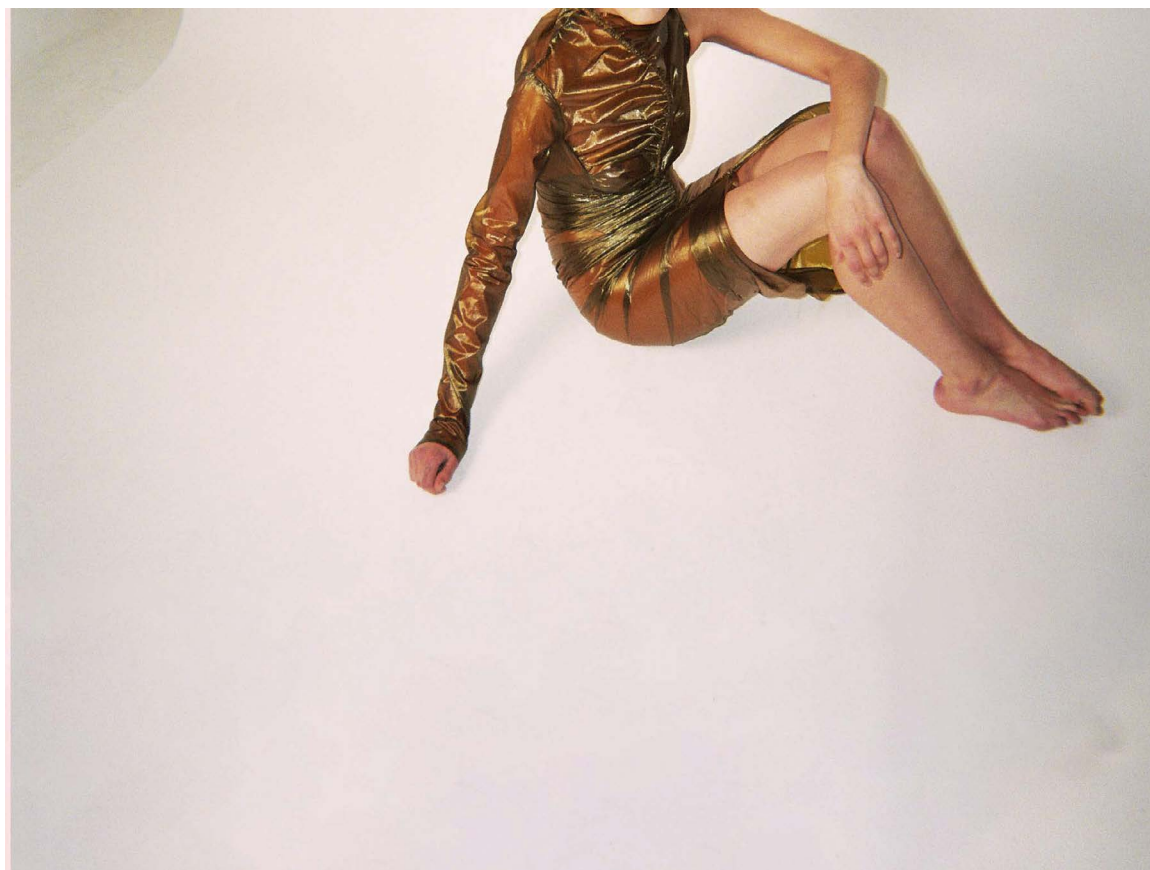


⑥

BLACK LEATHER
BITTER CHOCOLATE
SILK SATIN.



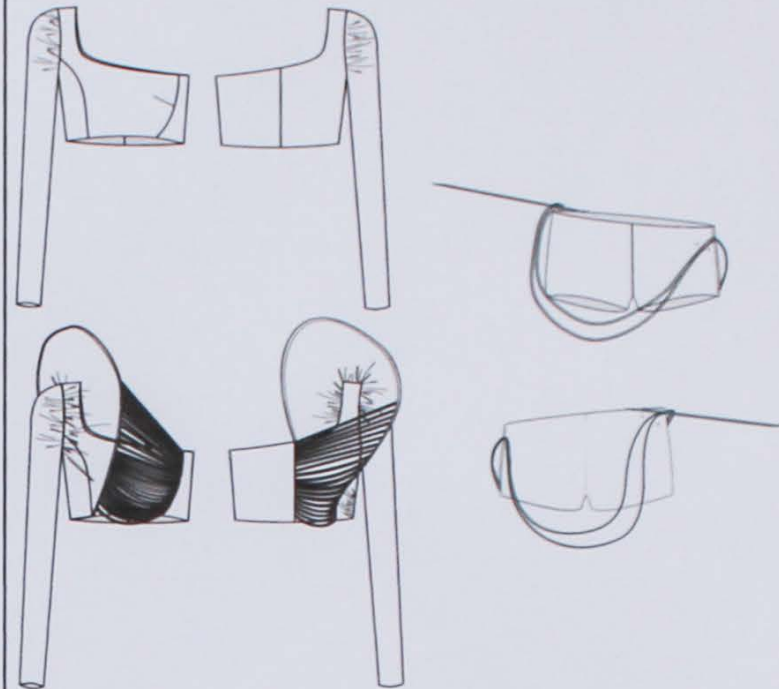




LOOK N°1 NATHALIE KAMBER

LOOK N°

SKETCH:



OUTFIT:

- BITTER CHOCOLATE SILK SATIN TOP //
JERSEY HYBRID.
- DRAPED BOVING SKIRT IN OLIVE GREEN
SILK SATIN WITH LEATHER BROWN
SHORTS.

ACCESSORIES:

BROWN LEATHER MULE.



FULL LOOK:



DETAILS:



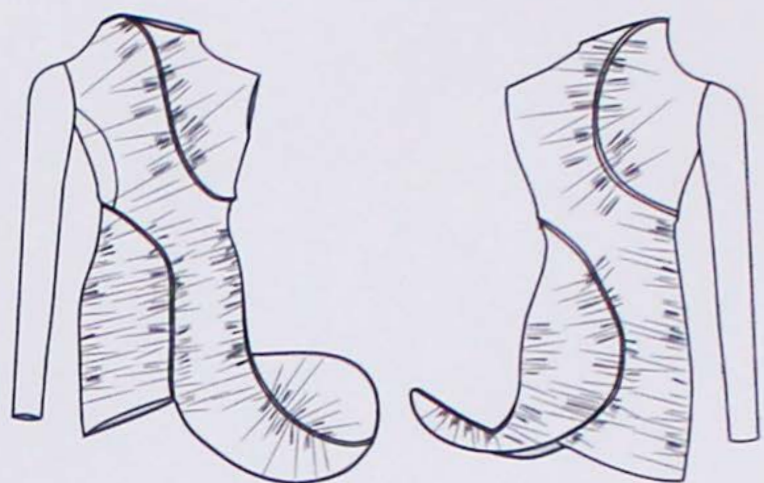


LOOK № 3

NATHALIE KAMBER

LOOK N°

SKETCH:



OUTFIT:

- GREEN/GOLD SILK TAFFETA GATHERED DRESS.
- SATIN BROWN SILK HOT PANTS.

ACCESSORIES:

LEATHER BROWN STRIPS HEELS -

FULL LOOK:



DETAILS:

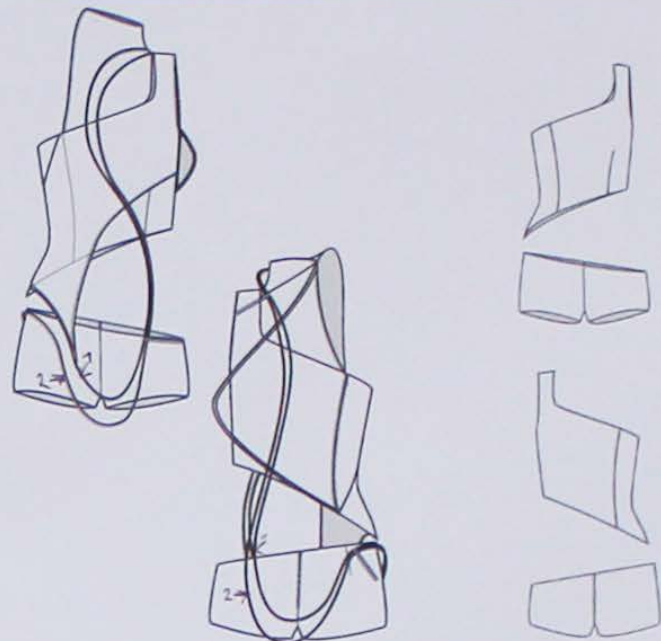


LOOK N° 4

NATHALIE KAMBER

LOOK N°

SKETCH:



OUTFIT:

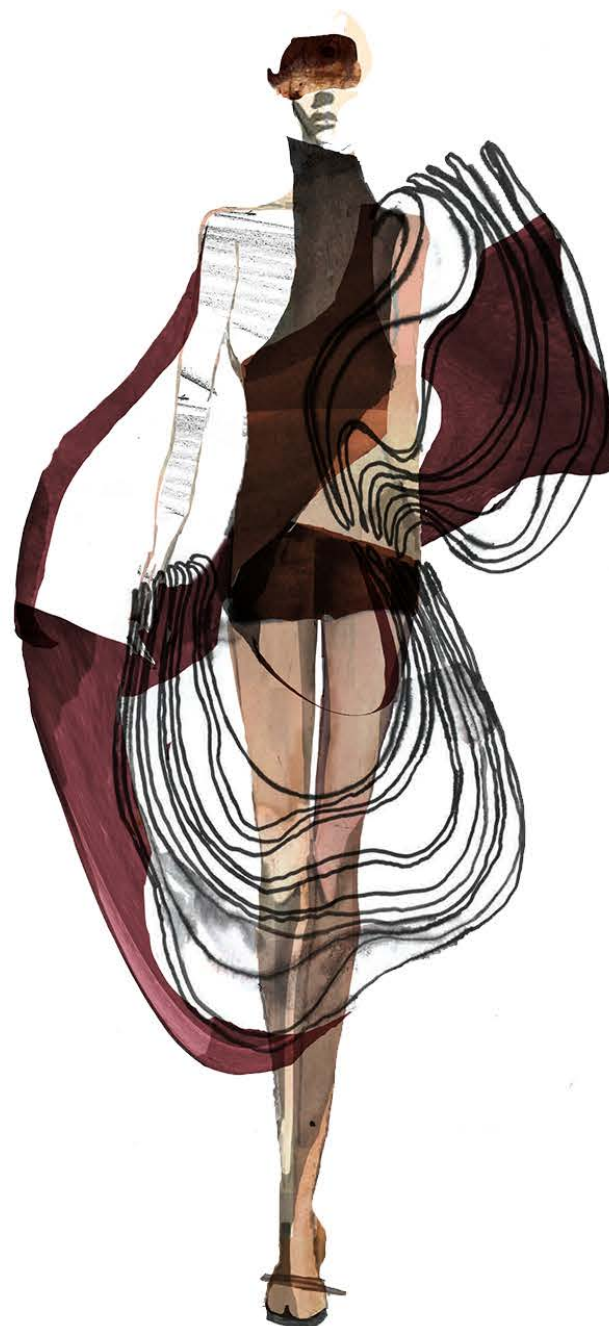
- AUBERGINE SILK STRIPS
- BONED TOP IN BLACK JERSEY
WITH LEATHER ONE SHOULDER
BASE. LEATHER SHORTS.

ACCESSORIES:

- WINE LEATHER HEELS.



FULL LOOK:



DETAILS:

