



## **ROOTS**

*WINDOW, DOORS, LINES STUDIES*

INSPIRED BY ALL THE AGED BEAUTY AROUND MY GRANDMOTHER'S HOUSE.

BY PIECING TOGETHER THE SILHOUETTES THAT I AM EXPOSED TO IN MALAYSIA, LINES, TEXTURED AND COLOR AROUND THE HOUSE I HOPE RECREATE THE BEAUTIFUL MEMORIES I HAVE FROM MY MIND INTO AN OBJECT. AS MY WAY TO PRESERVE ALL THE FORGOTTEN.







Daniel Steegmann Mangrané's 'Steel Curtains'



Cai GuoQiang 'Sky Ladder'



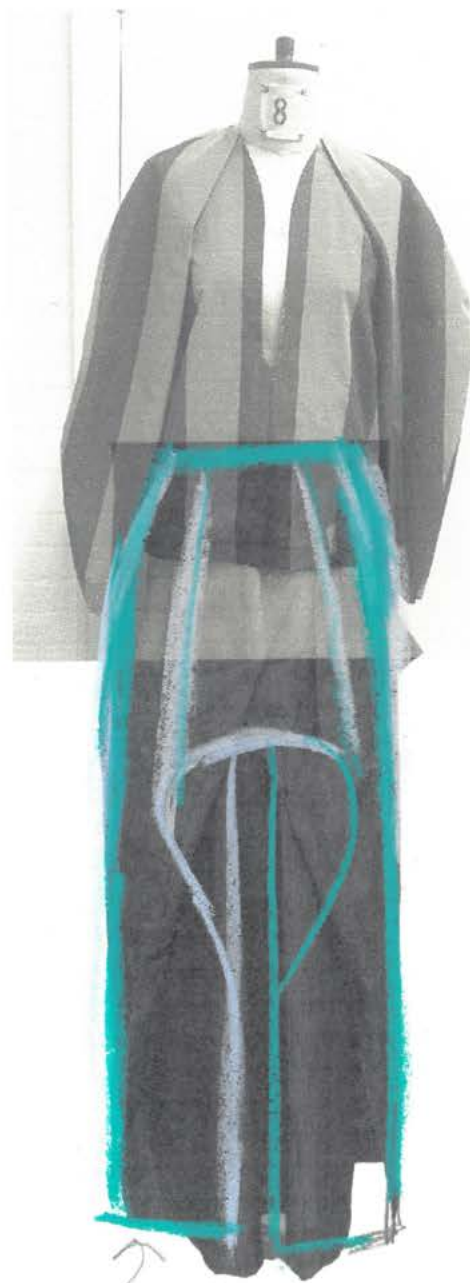




JIL SANDER F/W2 1 9 CAMPAIGN







skirt/trouser  
disguise



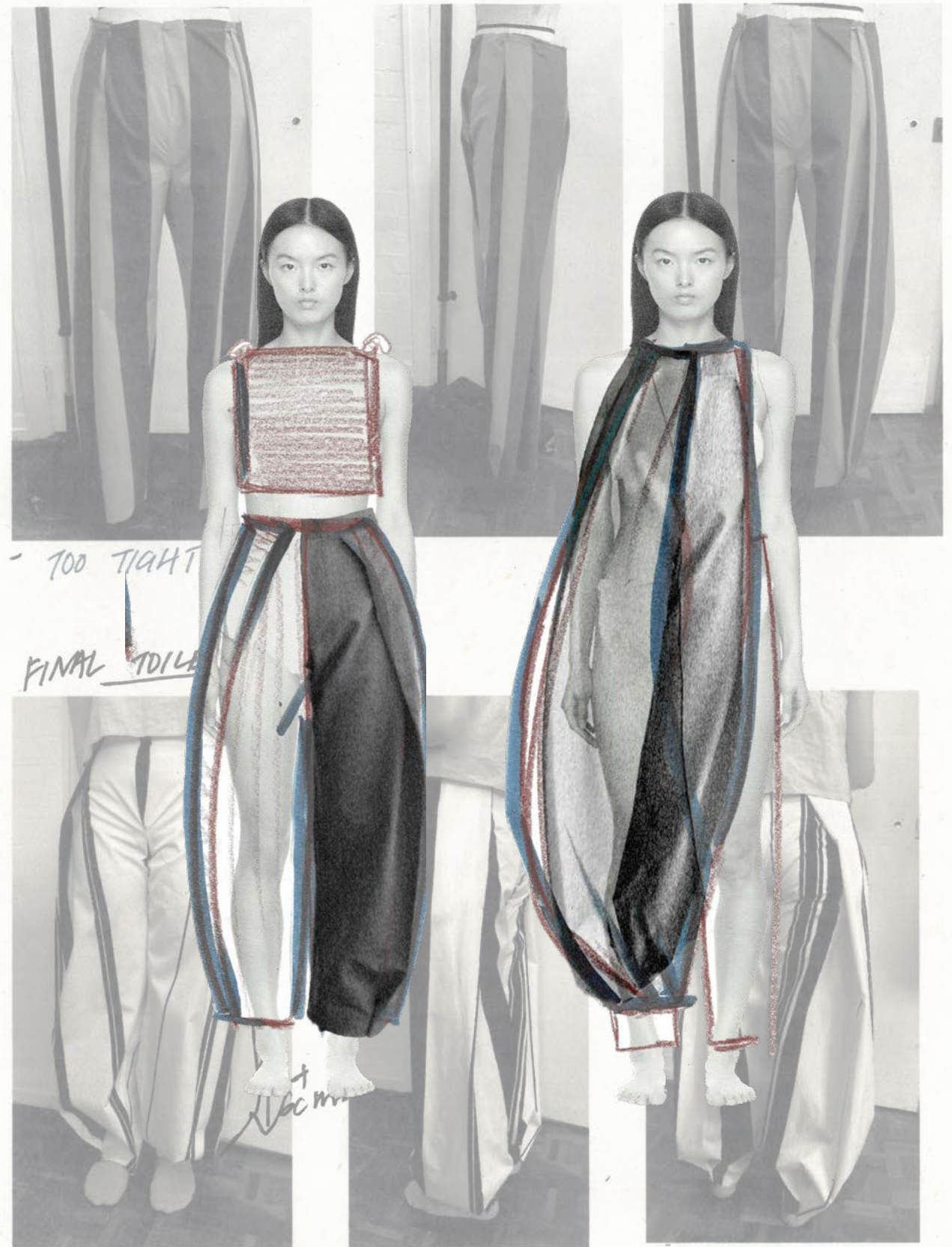
pleat  
fold  
create  
sleeve





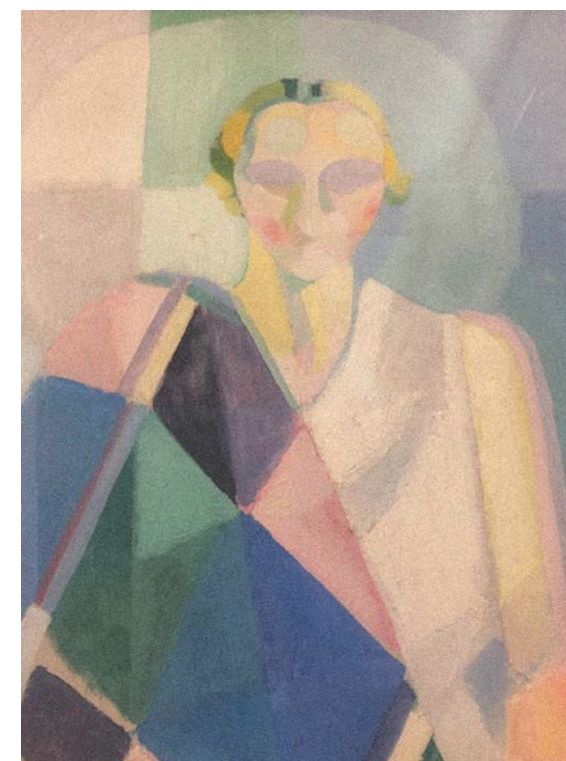


TOILE ① TPO1.



- LOWER THE CROTCH.
- EXTEND THE LENGTH BY 6CM

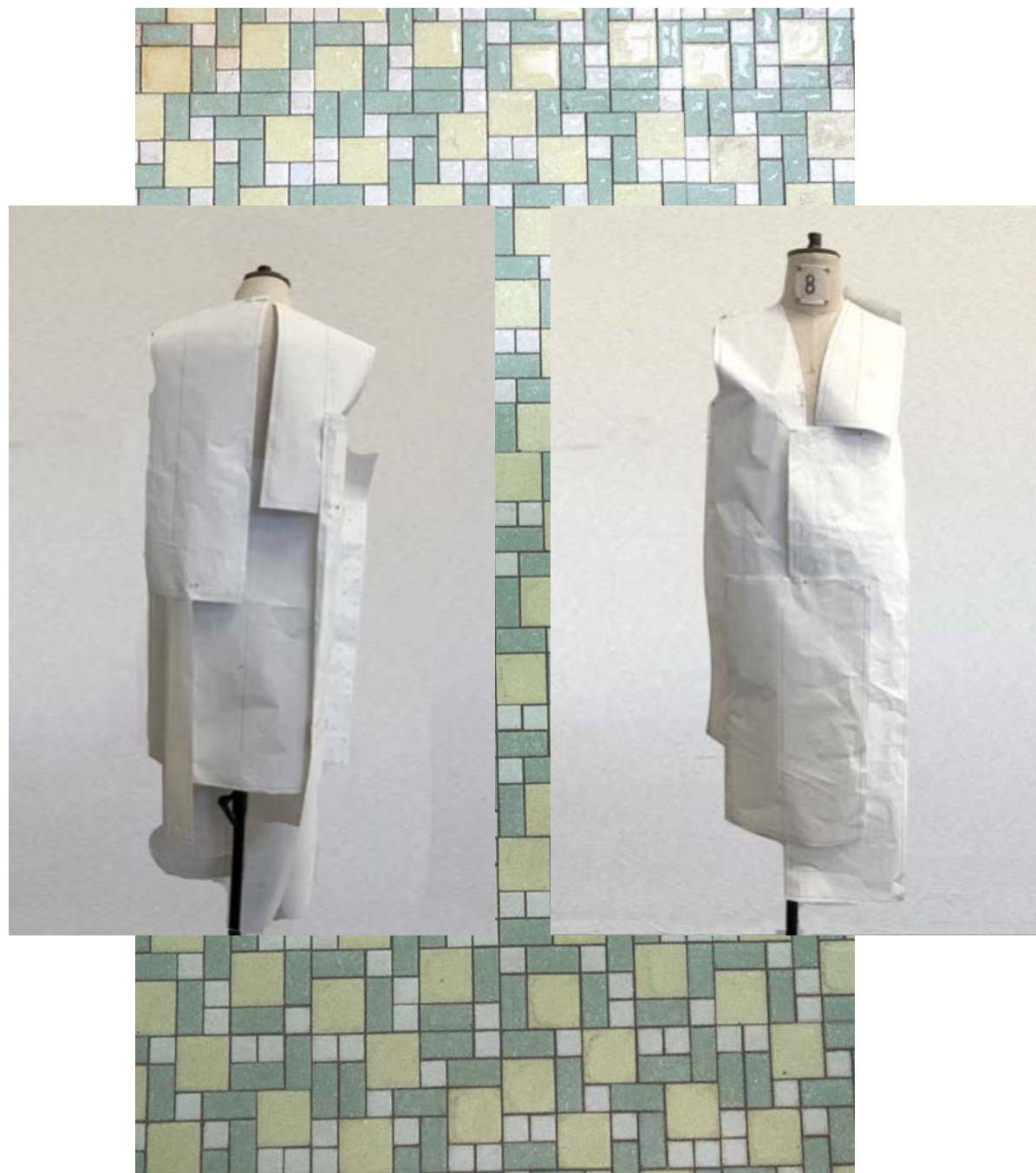




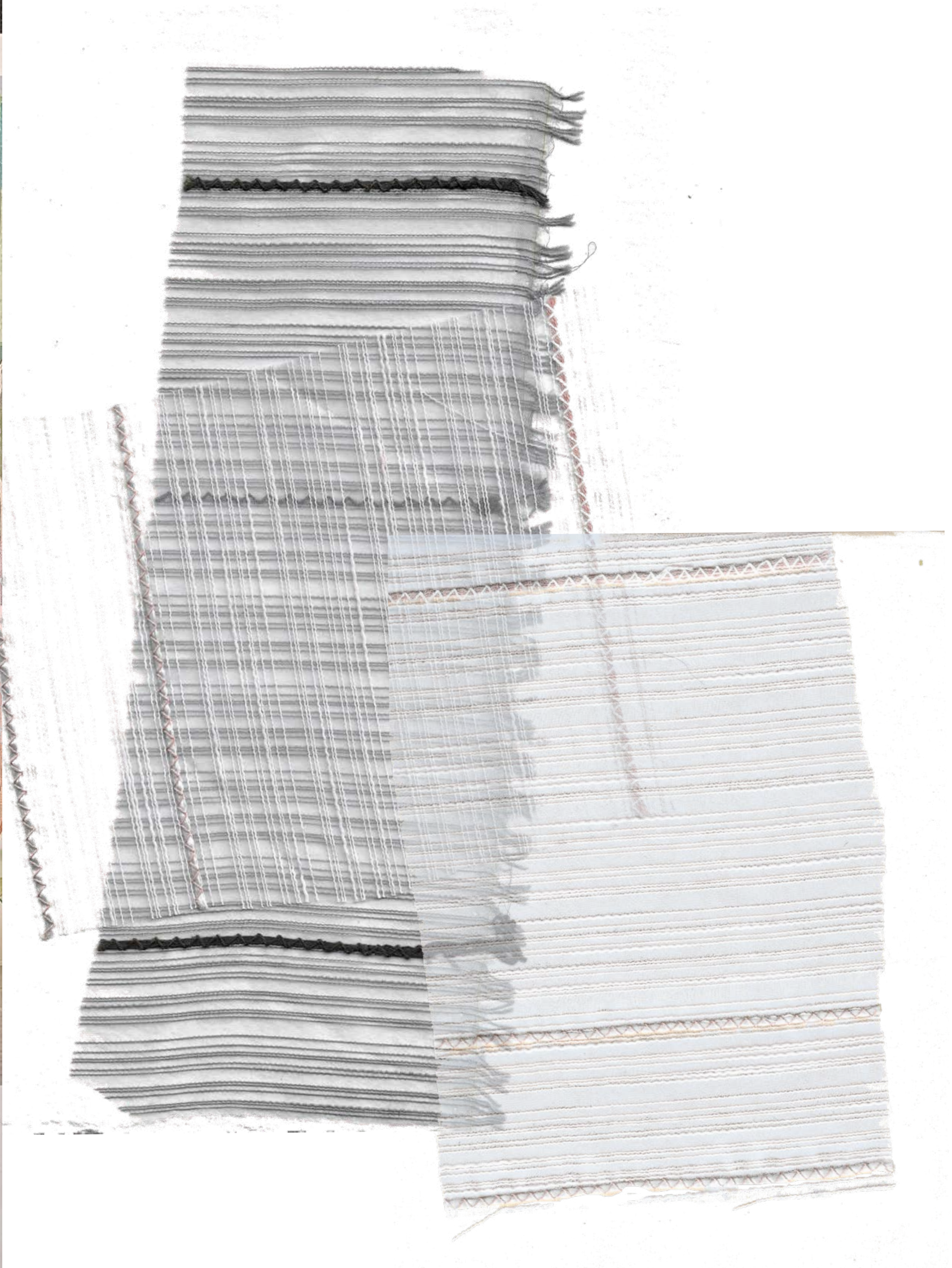
"Portrait of Madame Heim" Robert Delaunay



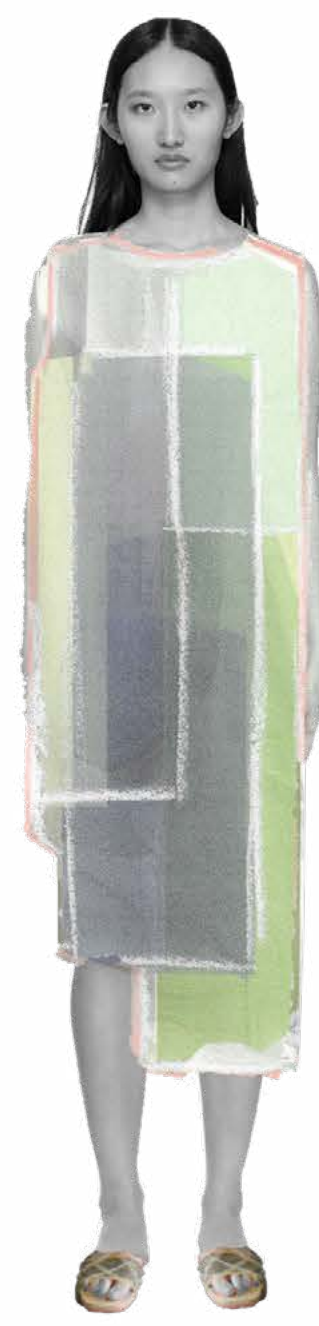
















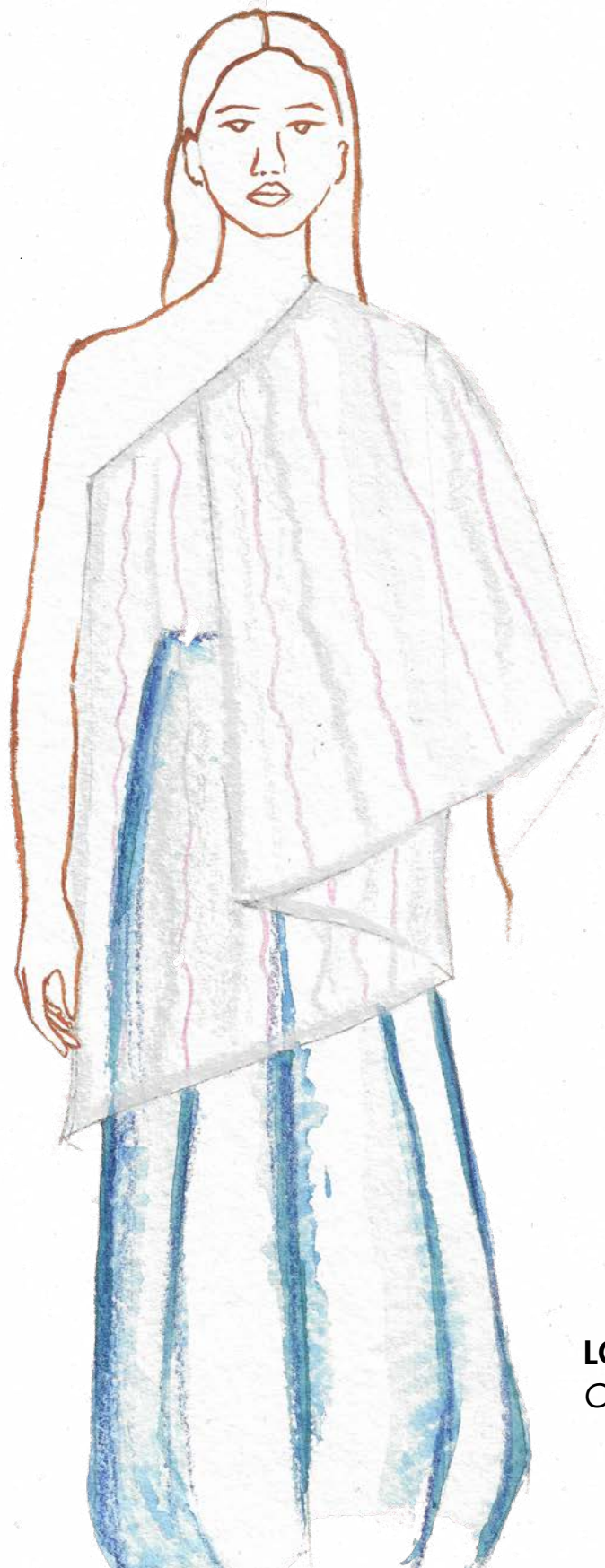
## STYLING



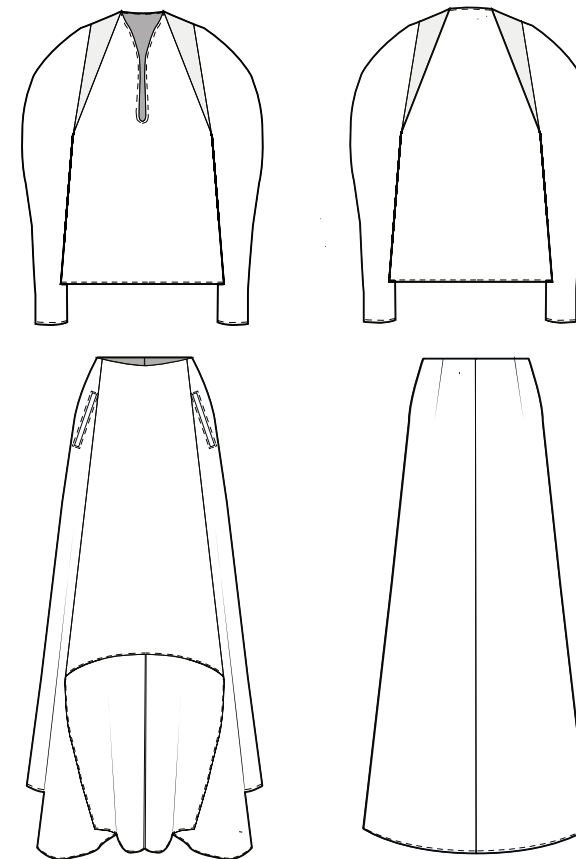
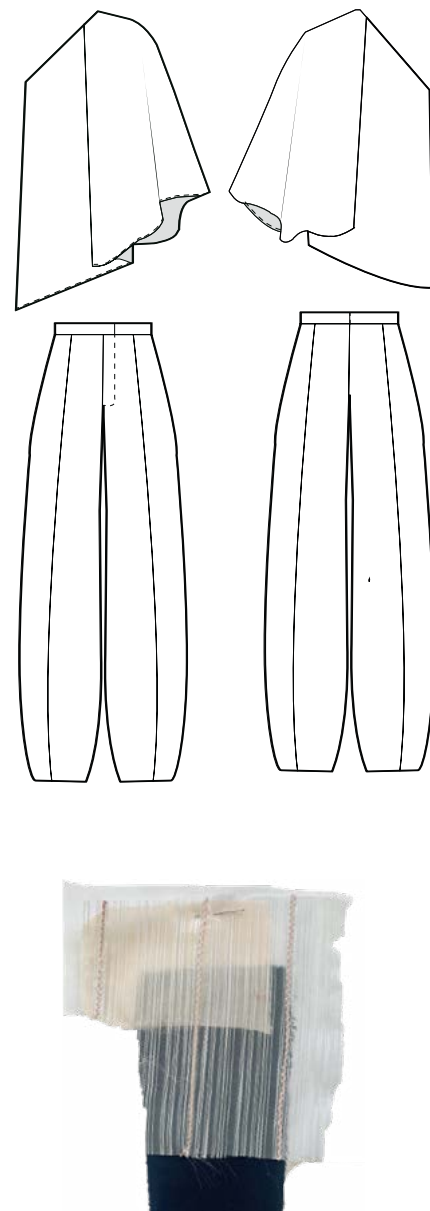




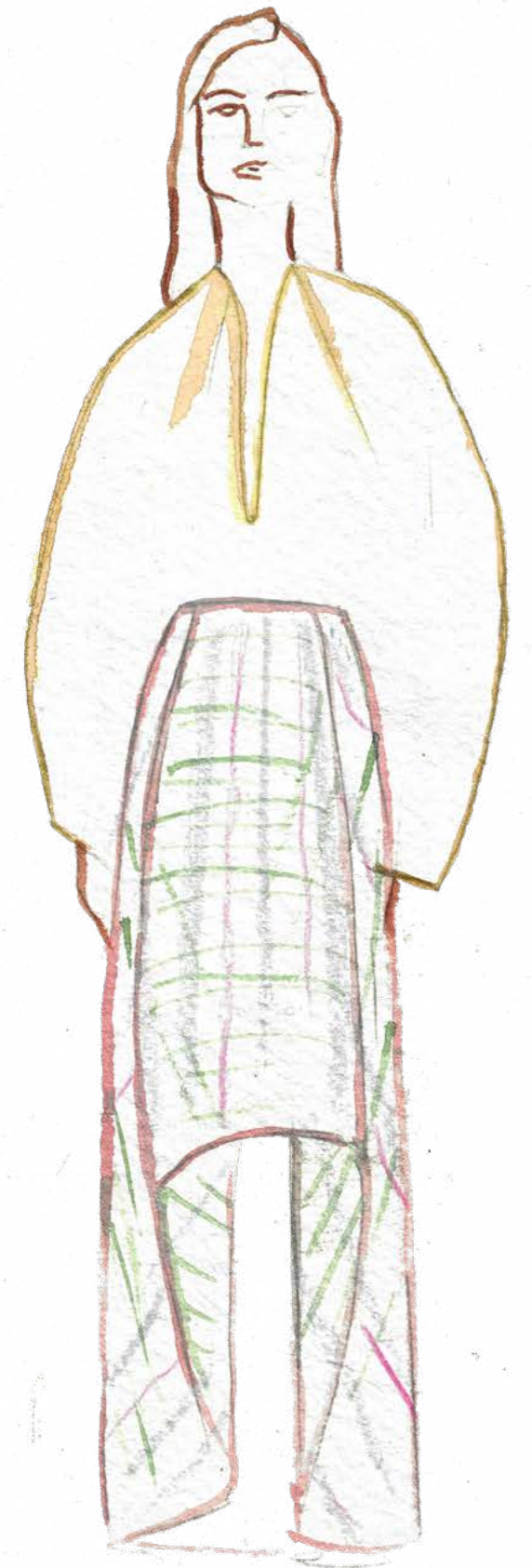




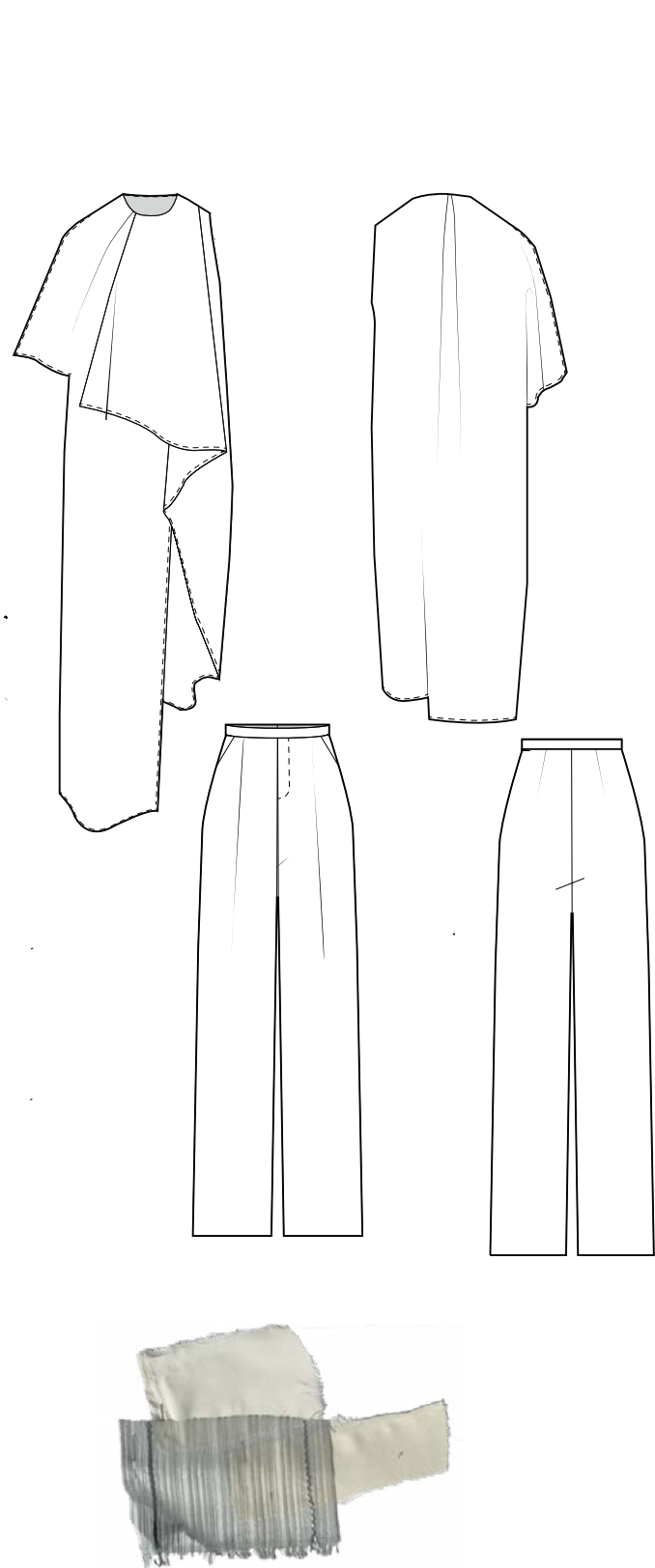
**LOOK 1**  
ORIGAMI TOP & BALLOON TROUSERS



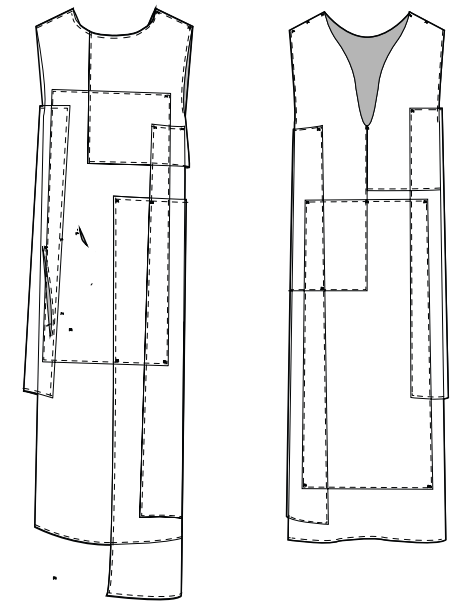
**LOOK 3**  
BALLOON SLEEVES TOP & TILES SKORT







**LOOK 4**  
KITES DRESS & PLEATED TROUSERS



**LOOK 6**  
ORGANZA TILES DRESS



