

propinquity.

Jade McBrearty



Marina Abramović



Robert Maplethorpe

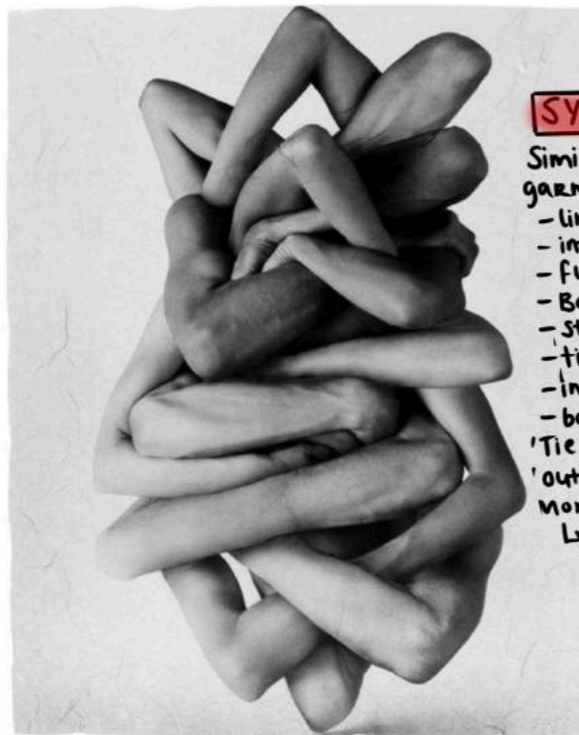


Marina Abramović



Harley Weir & George Rouy

In social psychology, propinquity is one of the main factors leading to interpersonal attraction. It refers to the physical or psychological proximity between people. My collection is based on the human connection, exploring non-monogamous relationships and the social and emotional dynamics and links within them. Each tonal, stand-alone look comes to life when brought together - interlocking several partners as they wear them in a multitude of ways. This gender-neutral collection was entirely created using recycled materials to minimise textile waste and is intended to celebrate love, intimacy, comfort, emotional connection, and the beauty of the human touch.



Michal Macku

SYMBOLISM

Similarities between garments and relationships

- linked
- interlocking
- fused together
- Bonded
- stitched together
- tightly knit
- intertwined
- bound
- 'Tie the knot'
- 'out of wedlock'
- monogamous symbols
- ↳ wedding ring

TYPES OF RELATIONSHIP

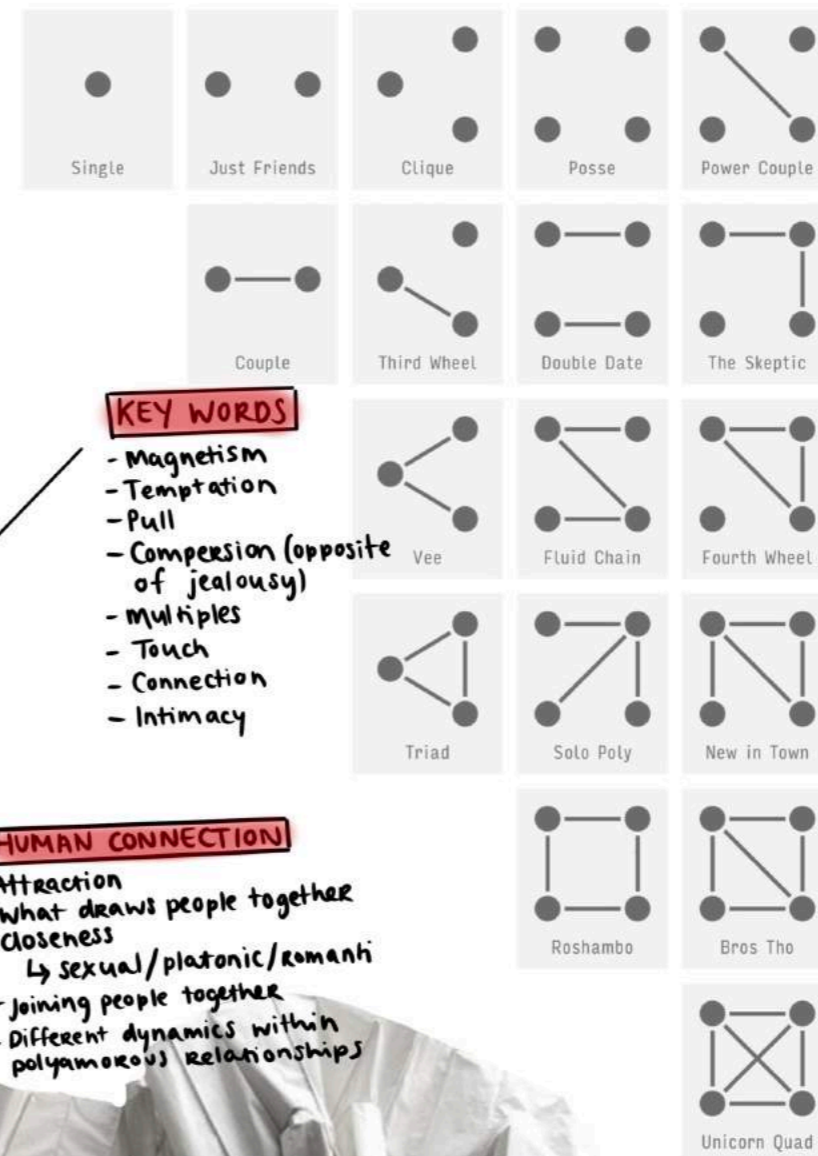
- Open relationship
 - ↳ challenging monogamy (Taboo in some societies)
- Polygamy (Polyandry/Polygyny)
 - tradition and legalised in some countries → respect
 - ↳ double standard

POLYAMORY

CHALLENGES

- Jealousy - having defined rules/boundaries
 - ↳ communication/honesty
- Judgement from others
- Fairness → dividing time/attention
- What do you define cheating as?

Periodic Table of the Polycules



KEY WORDS

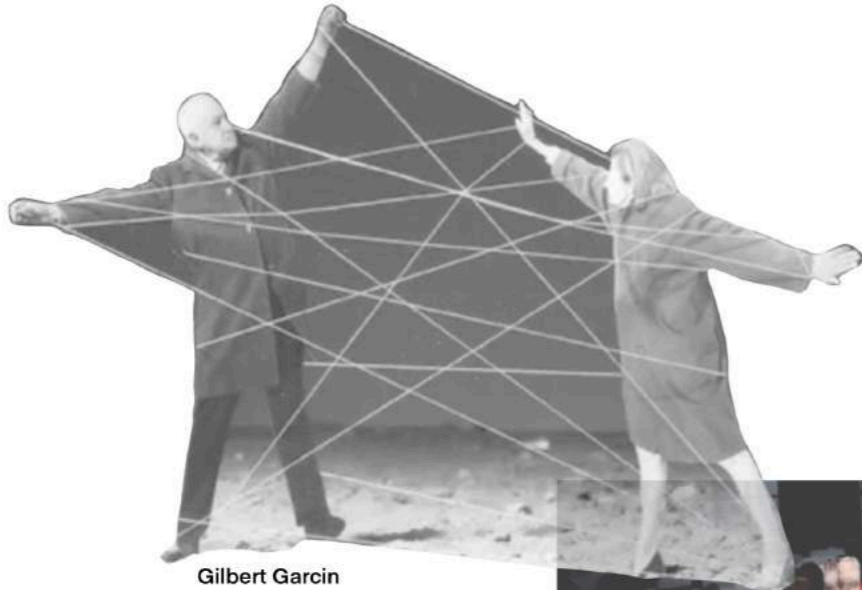
- Magnetism
- Temptation
- Pull
- Compassion (opposite of jealousy)
- Multiples
- Touch
- Connection
- Intimacy

HUMAN CONNECTION

- Attraction
 - What draws people together
- Closeness
 - ↳ sexual/platonic/romanti
- Joining people together
- Different dynamics within polyamorous relationships



Ani Krikorian



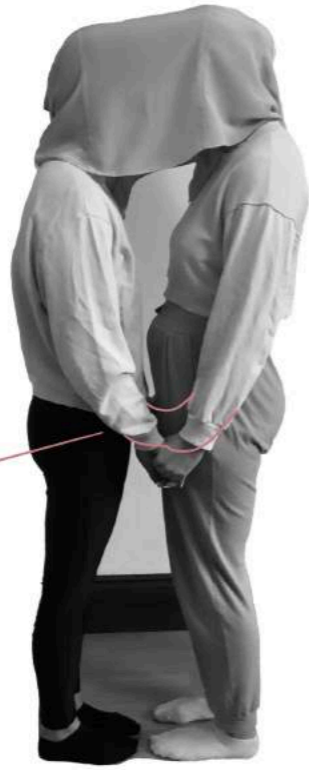
Gilbert Garcin



Helena Almeida



Join sleeves together holding hands



Privacy and intimacy



Using ties to connect - add more people



Sharing garments



Multiple partners interlinked in one relationship

SECOND - HAND CLOTHING

Gathering second-hand clothing to use for sampling to minimise fabric waste creating a more sustainable collection



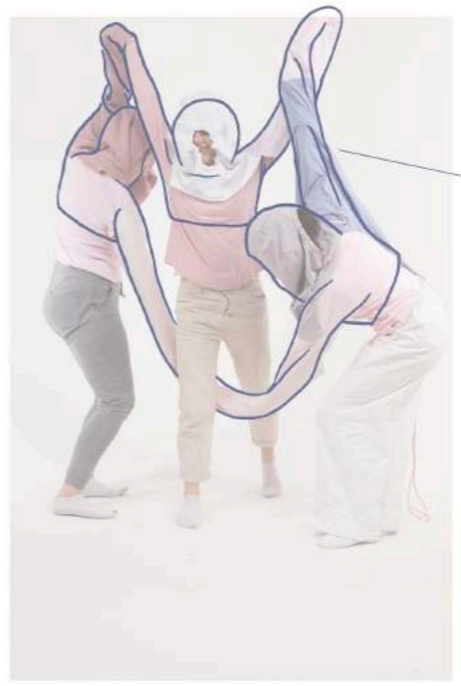
COLOUR SCHEME

Different colours representing different partners in relationship
Playing with different tones of the same colours
Possibly use deeper shades in areas where individuals connect in more intimate areas



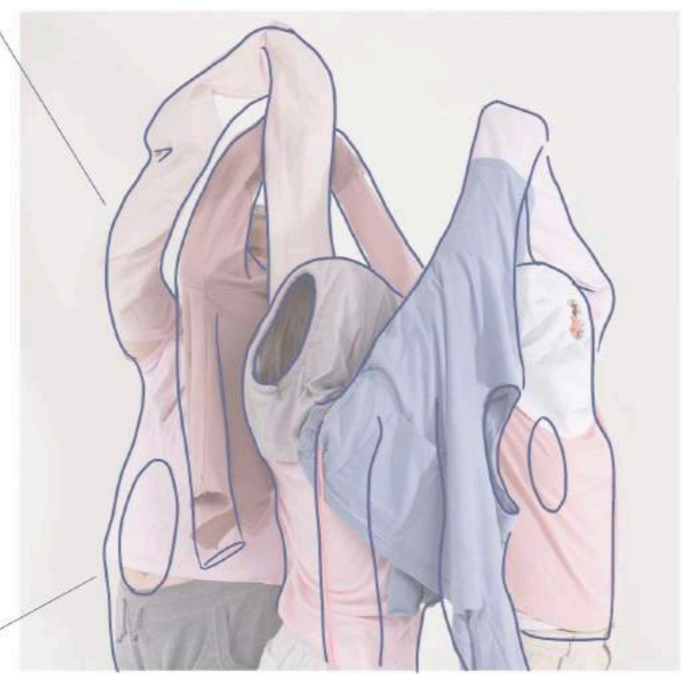
Could make these pieces detachable (magnets?) so the looks can be worn alone as well as together - not as abstract

I like how each arm interlocks together - keeping each wearer closely bound



Create one continuous attached piece that can be contorted around as the wearers move

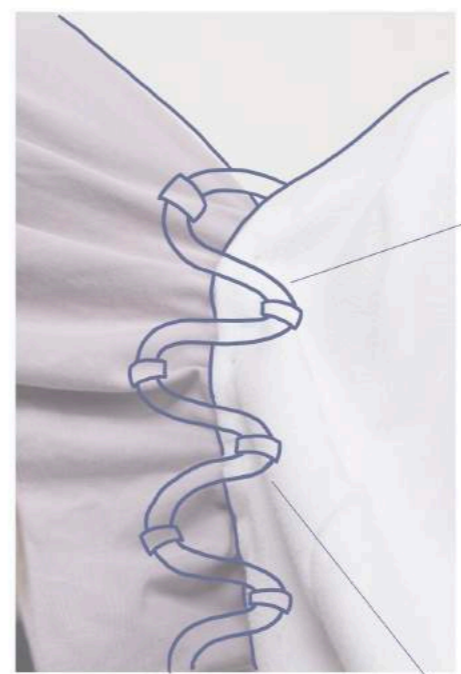
Maybe make these more defined as separate garments - less contemporary / abstract



Magnets or poppers on sleeve ends



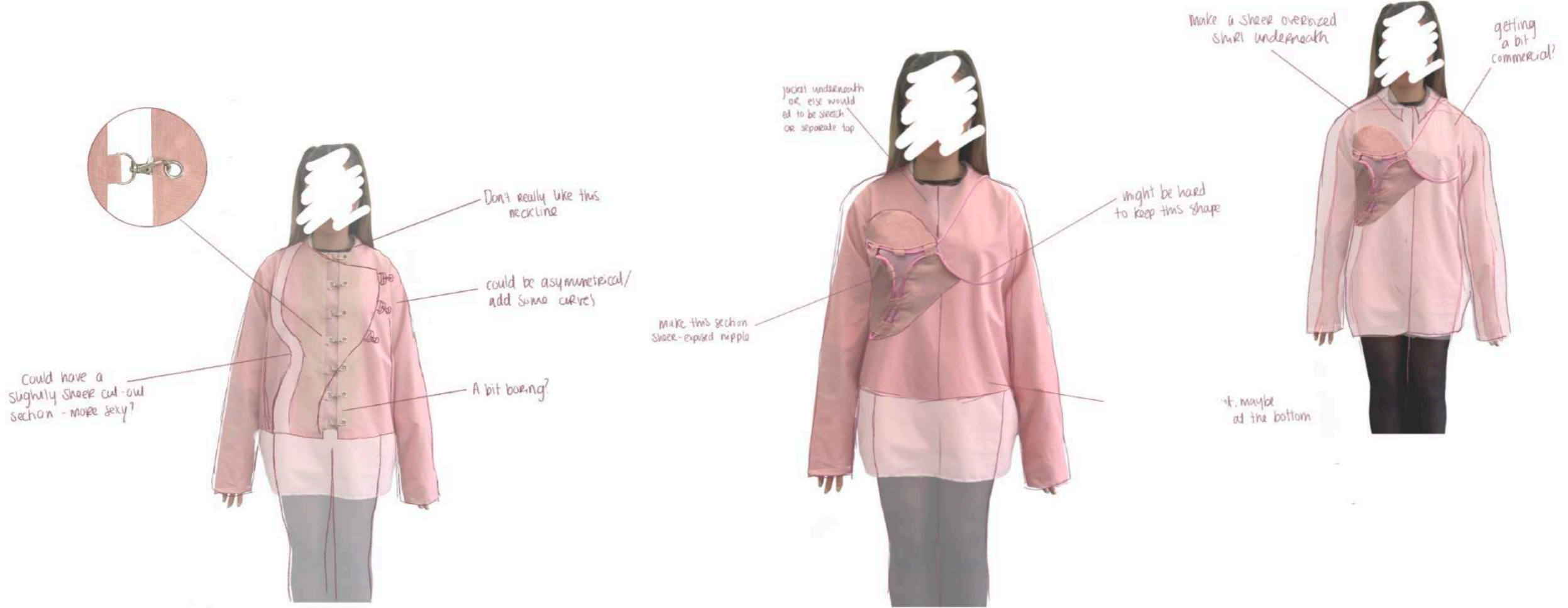
Could also be used as a feature on sleeves



Make pieces with extra sleeves/armholes/heads that could also be for legs/feet etc. - interchangeable garment

Individual pieces that can be drawn together or pulled apart

Using an adjustable drawstring to connect hoods



LOOKING AT DIFFERENT ALTERNATIVE FASTENINGS



Kiko Kostadinov



Y Project



Hyein Seo



Tan



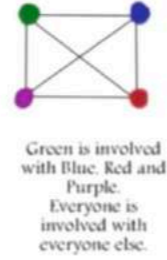
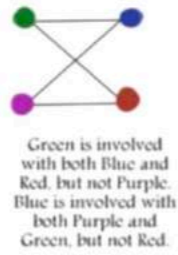
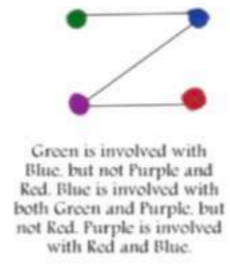
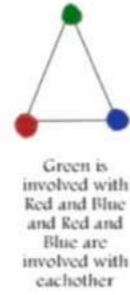
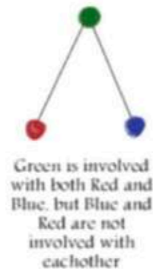
Debora Brosa



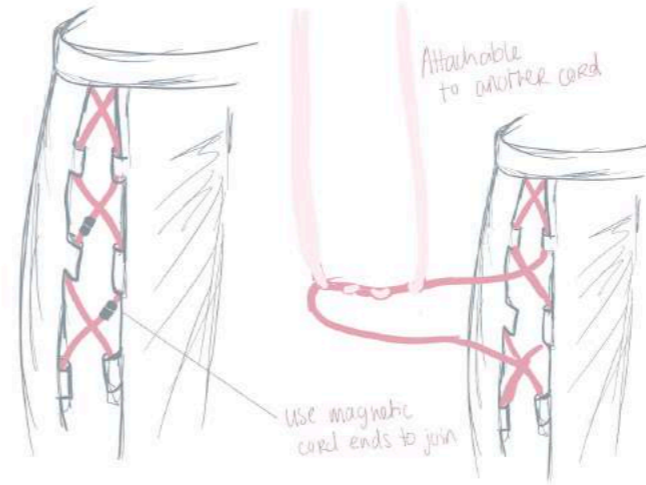
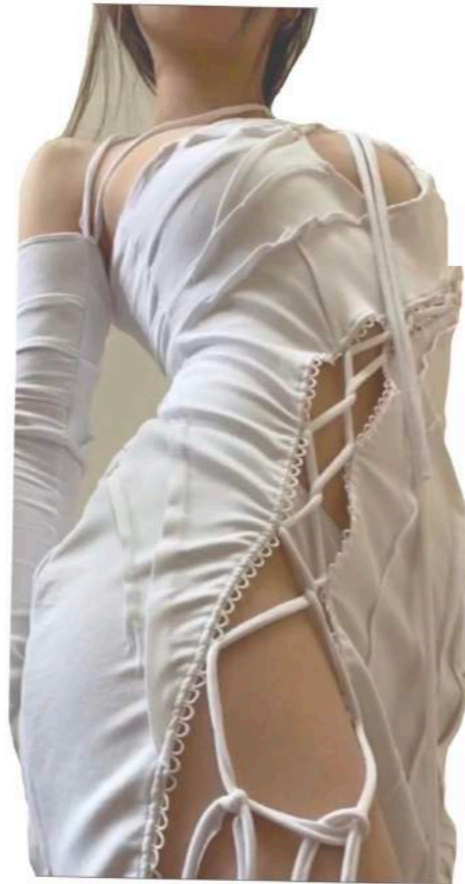
Puck Verheul

Some more interesting ways to attach each garment to another - keeping connection optional and interchangeable, rather than permanently fused in place

Examples of Polyamorous Relationship Configurations



Criss cross pattern reminiscent of polyamorous relationship configurations



Adding cord to trouser side seam



RACHEL ELLEN BOGAN



MAKING THINGS MORE PLAYFUL

Suggestive placement
- chest / crotch area

Using glove shape to make
a pocket - could attach onto
sleeve of another garment



Sanchez Kane



Aune Collections



Worn separately here as a
belt - maybe part of trousers?



Elsa Schiaparelli



T Label

May be tied on as
a separate piece



Workers for Freedom

Hand as part of the fabric
- print/embroider? Could be
sewn in another fabric - maybe
sheer?

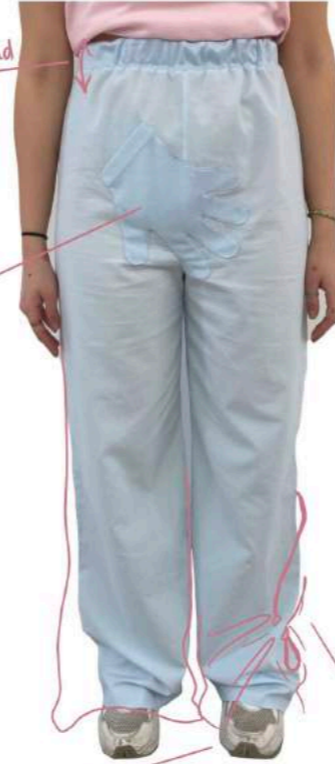


Lower waistband slightly

Make a slightly bigger pocket - quite tight

Could have pocket in a contrasting colour / sheer

Use a zipper instead of elasticated waistband



This could magnet onto a sleeve for another wearer

Wider legs with cinch detail from drawstring

Would definitely use a better heavier fabric if remaking or else add a lining



I really like these trousers - similar ruching could be added with a drawstring



AFTERHOMWORK

ALEXANDER MCQUEEN



Adding a mesh overlay



Two gloves in one?

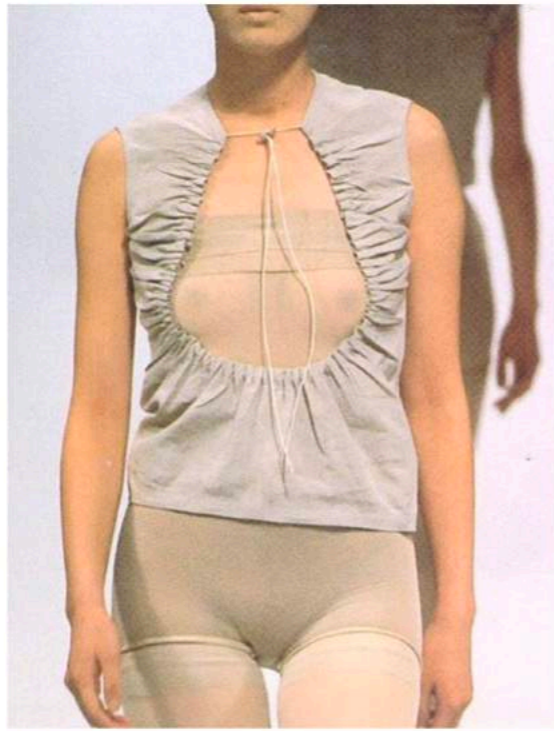


Hand-holding glove





SUZANNE SPIEGOSKI



GOMME

Ruching shoulders with a drawstring to add volume

Starting with long oversized skirt



More volume round the bottom



Added small double tabs to tie in with other garments and keep cords in place



