

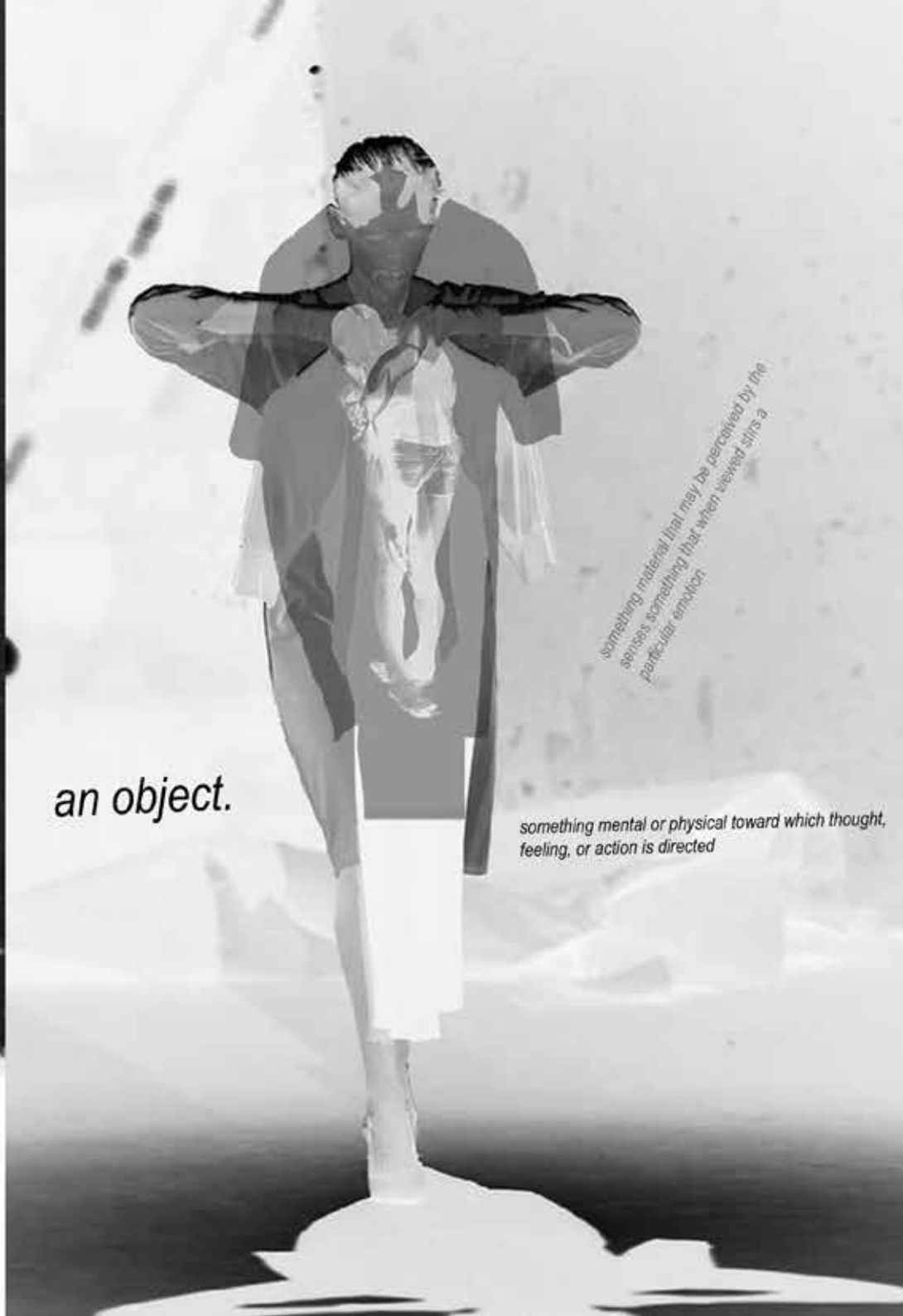


RT

BOBYN TAYLOR



A CONCEPT

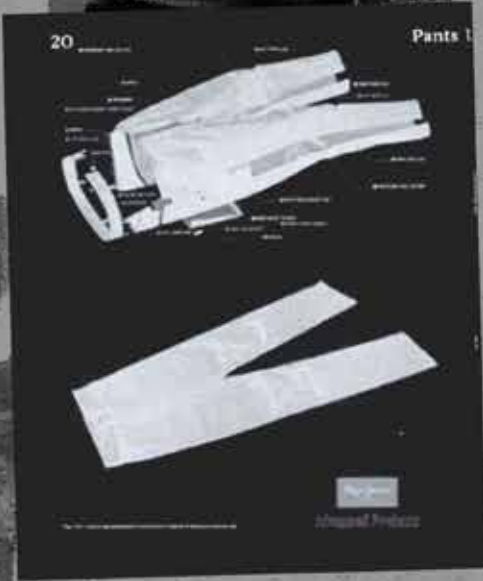


an object.

something material that may be perceived by the senses, something that when viewed elicits a particular emotion

something mental or physical toward which thought, feeling, or action is directed

# RESEARCH THEMES



TROUSERS



*an outer garment covering the body from the waist to the ankles, with a separate part for each leg*



SAMURAI



a member of a powerful military caste in feudal Japan.

# RESEARCH THEMES

## CARRYING

support the weight of.



support and move (someone or something) from one place to another



## EXPRESSION



the action of making known one's thoughts or feelings.





**RESEARCH  
AND**



**USING MY  
SAMUARI  
RESEARCH  
I NOTICED  
CARRYING  
ELEMENTS  
IN THERE  
GAMRENTS - I**





TROUSER  
EXPERIMENTATION AND  
RESEARCH



USING RESEARCH  
FROM MY OWN TROU-  
SERS AND ALREADY  
MADE TROUSERS  
CREATING A SIL-  
HOUTTE  
THAT REFLECTS MY  
RESEARCH THEMES



HERE I EXPERIMENTED WITH  
PREMADE TROUSERS USING  
MY HANDS, AND TOOLS TO EDIT  
THEM AROUND A WOMANS BODY  
LOWERING THE CROTCH AND  
PUSHING THE BOUNDARIES OF  
WHAT MAKES A TROUSER



I ADDED A BOTTOM  
TROUSER FROM  
PREVIOUS RESEARCH  
- THE IDEA OF FALLING  
DOWN TROUSERS,  
THE NEW REBEL  
TROUSER



# THE REBEL TROUSER



IMG\_6899.JPG



IMG\_6876.JPG IMG\_6877.JPG IMG\_6878.JPG



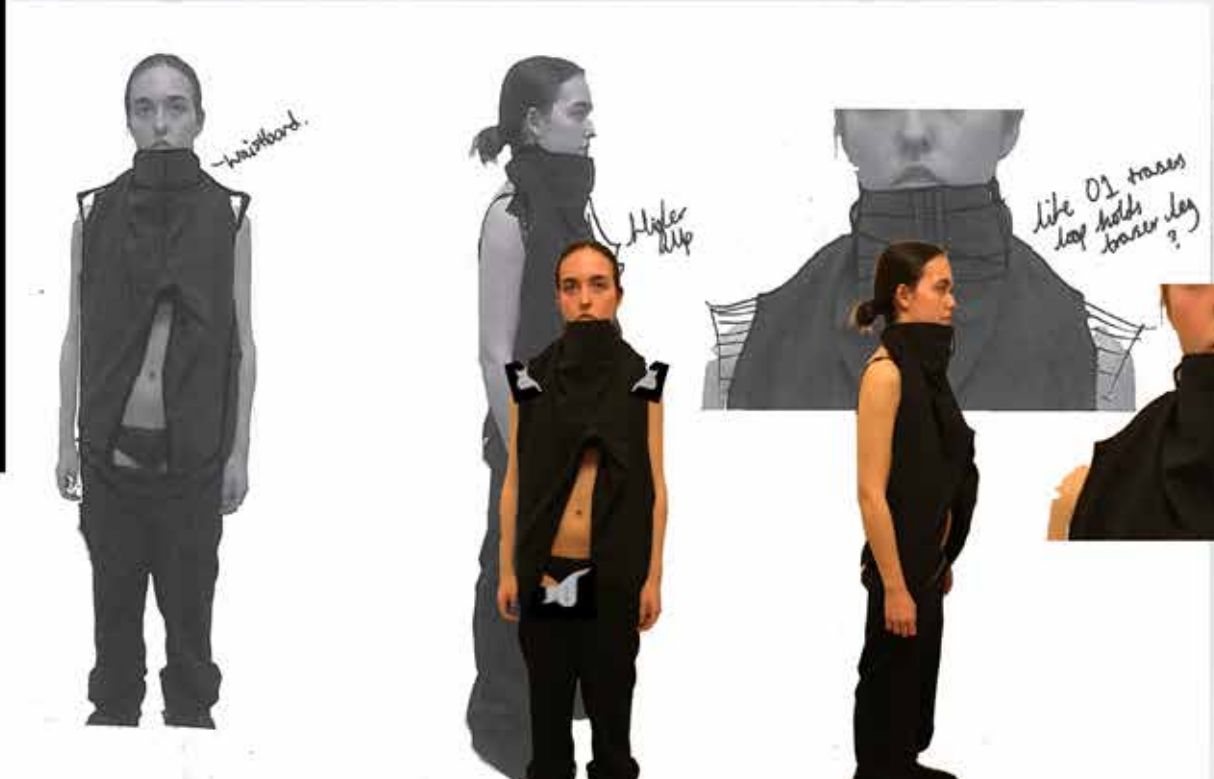
IMG\_6879.JPG IMG\_6880.JPG IMG\_6881.JPG



IMG\_6882.JPG IMG\_6883.JPG IMG\_6884.JPG



IMG\_6870.JPG IMG\_6871.JPG IMG\_6872.JPG



IMG\_6867.JPG

IMG\_6869.JPG

IMG\_6867.JPG

IMG\_6869.JPG



USING FOCUSED MOUTAGE OF DRAPE TROUSER TO CREATE TROUSER INSPIRED DESIGNS

**FURTHER DESIGN DEVELOPMENT**



**BANDAGE CAST  
CONSTRUCTION AND  
FOCUSED DESIGN  
DEVELOPMENT -**

OUTFIT 2

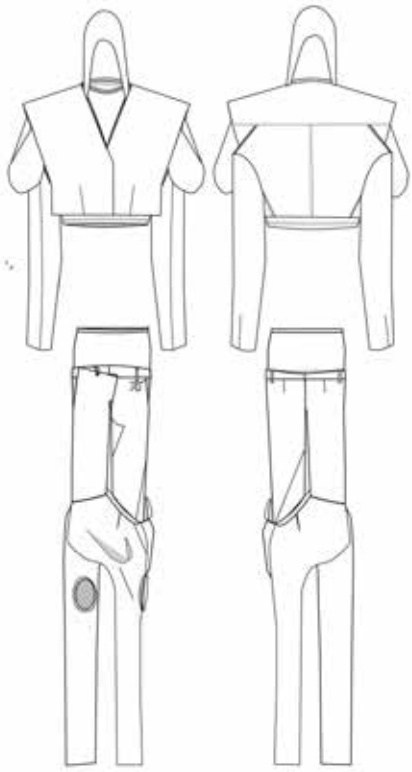
**USING THE GENDER  
NETRUAL TROUSER  
UNDERNEATH THE  
BANDAGE CAST TORSO  
AND WAISTBAND  
STRAP TO CONVEY  
TROUSER REFENCES**



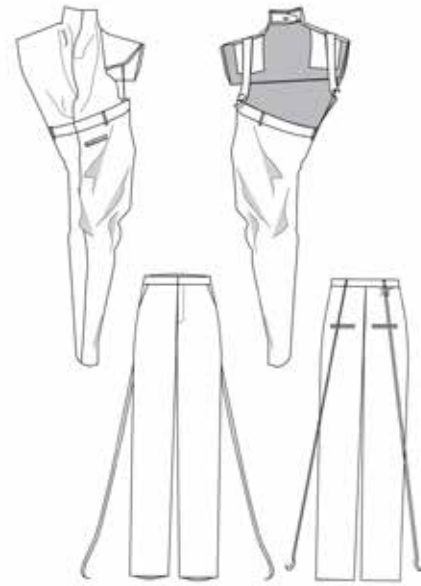


# FINAL LINE UP AND ILLUSTRATIONS



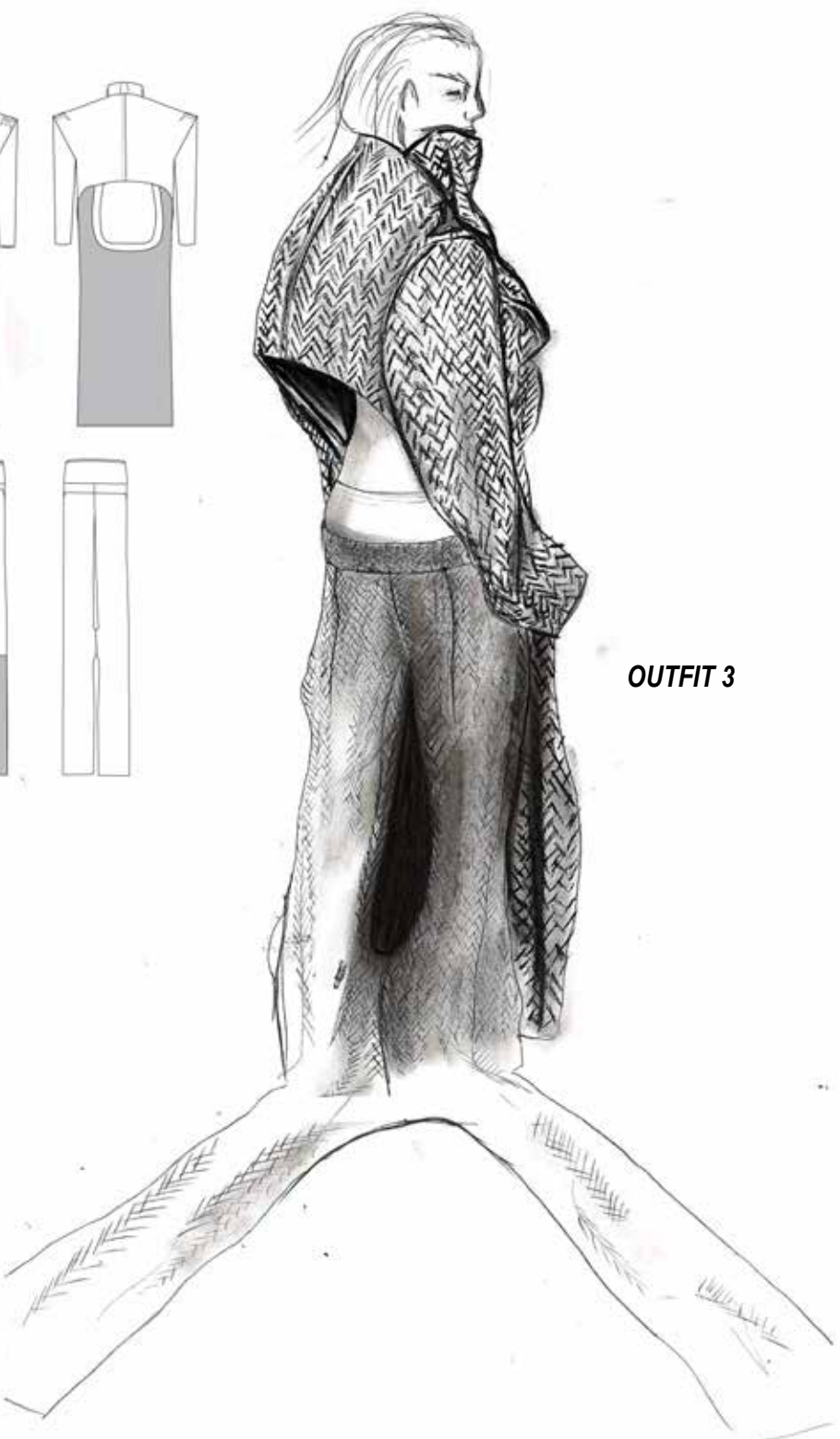
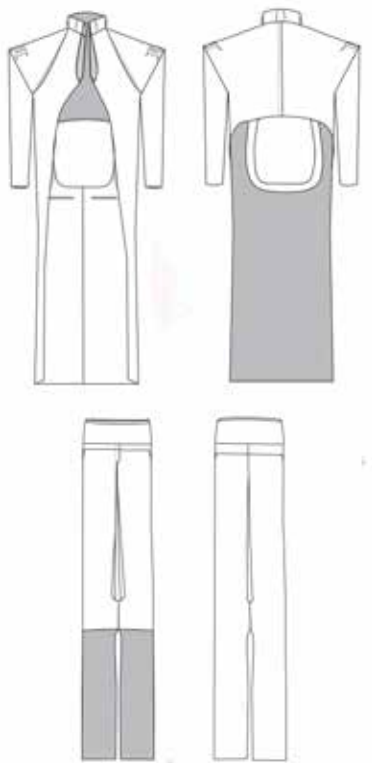


**OUTFIT 1**



**OUTFIT 2**

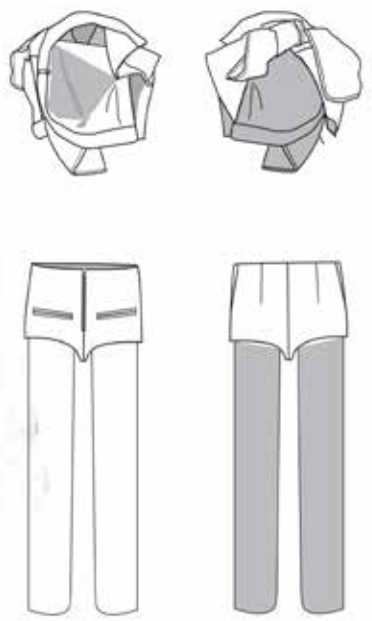




**OUTFIT 3**



**OUTFIT 4**







RT