



# DECAYING FORMS

ROWAN STALLAN - GRADUATE COLLECTION 2022

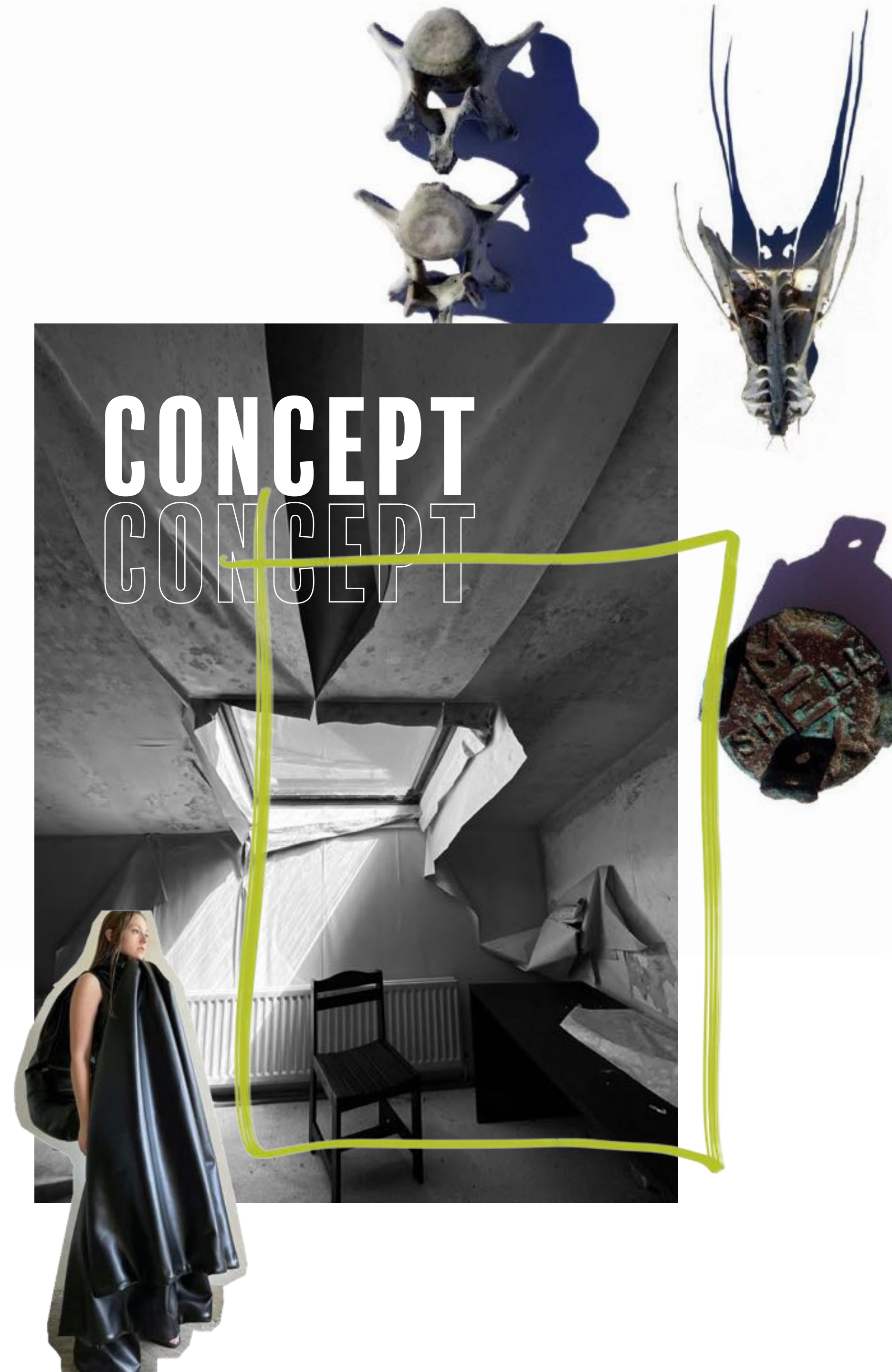


# DECAYING RUINS

My collection explores the poetic character of an old abandoned hotel situated on the west coast of Scotland in a small town called Tighnabruaich. My collection explores themes of **decay**, the **weather** and the **Scottish landscape**.

I am drawn to the hotels decaying features and the idea of the building being untouched yet affected by its surroundings. I was captivated to the ghostly forms of the draping wallpaper, collapsing ceiling and nature which has taken over the building. The hotel is rich with texture, I have observed it ruinous state recording the surfaces which have rotted and cracked with the peeling wallpaper revealing new layers and the damp and mould creating beautiful organic patterns. I am fascinated by the idea of **finding beauty in what is not considered beautiful**.

Tighnabruaich captures the sublime landscapes associated with Scotland. Sitting in amongst rugged bleak of hills surrounded by sea. Inspired by the Scottish landscape and weather I want to explore practical clothing for the outdoors which responds to the elements.





# DECAY

My research began with the concept of decay. Exploring an old dilapidated hotel in a small village called Tighnabruaich. I was fascinated by character of the run down hotel and the decaying forms, the inside being untouched yet affected.

I am fascinated by the failing, worn qualities and characteristics within the hotel exploring its peeling wallpaper, damp ingress and intrusive nature which has invaded the building.





# WEATHER FORMS

Tighnabruaich is located on the west coast of Scotland situated in the rough and rugged landscape of dreich clouds, greenery and the ocean. Scotland is positioned at the end of the North Atlantic drift and gulf stream which mean our weather conditions are dramatic and diverse with lots of rain. Growing up around Tighnabruaich a small fishing village, I was inspired by the elements of the weather, sail boats and the fishing attire that the fishermen wore. I am interested in how clothing can be functional and practical and adapt to the ever changing weather climate.





# TWISTING FORMS



waxed melton wool



## PEELING LAYERS



## SILHOUETTE DEVELOPMENT

Through my design work I want to mimic the feeling of falling wallpaper. Developing peeling and draping forms that twist and fall around the curves of the body.

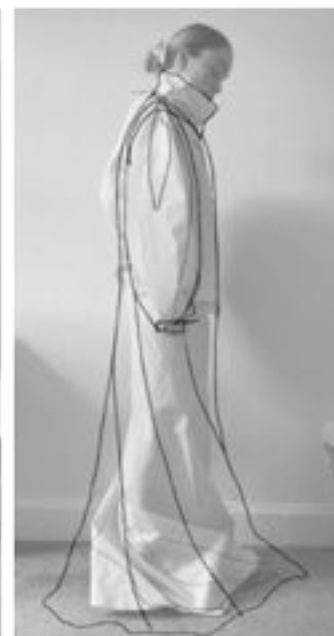






# DRAPE

Taking a similar approach to the twisting draping forms, I have pushed this technique into a jacket inspired by the fisherman's coats/overalls.



# SILHOUETTE DEVELOPMENT





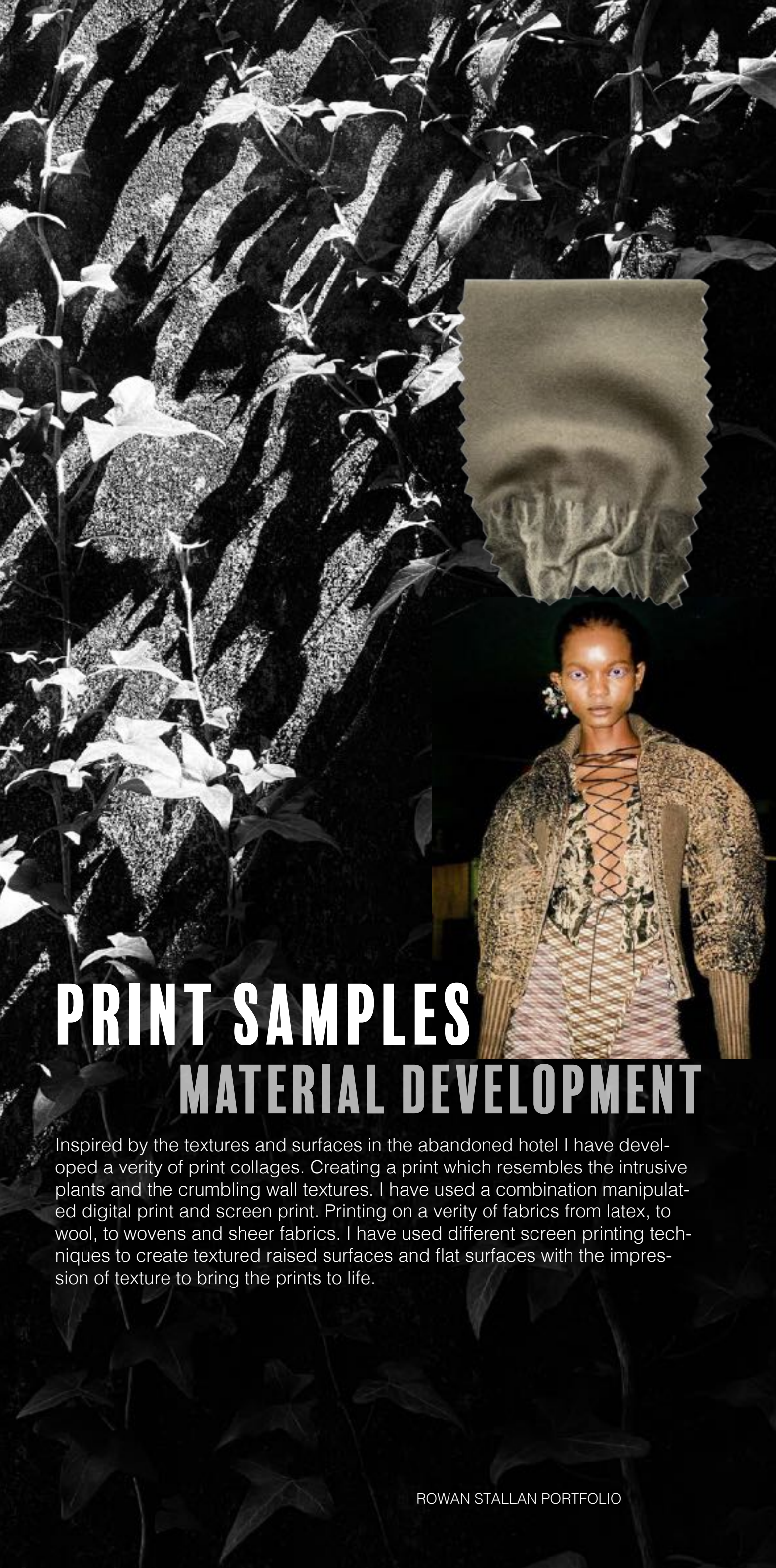
WINDSWEPT

SILHOUETTE DEVELOPMENT

I wanted to create garments which respond to there environment, creating a windswept feel with peeling panels and zipping seams which can move and react to the ever changing weather.





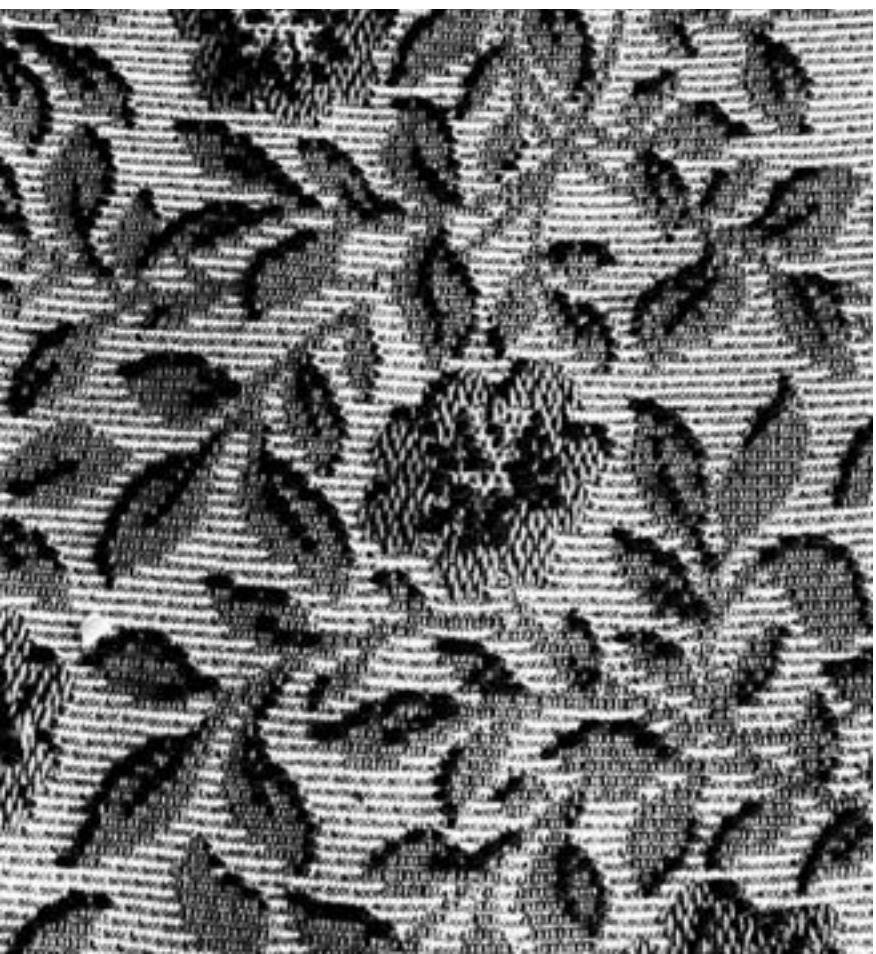


# PRINT SAMPLES

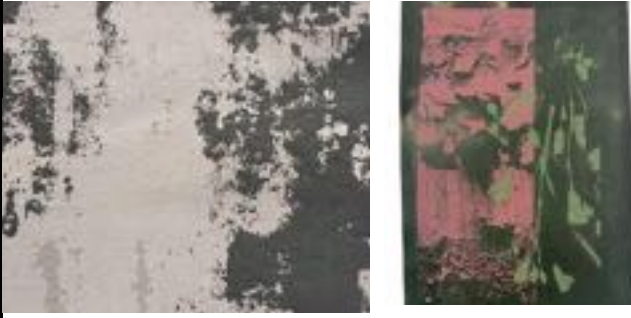
## MATERIAL DEVELOPMENT

Inspired by the textures and surfaces in the abandoned hotel I have developed a variety of print collages. Creating a print which resembles the intrusive plants and the crumbling wall textures. I have used a combination manipulated digital print and screen print. Printing on a variety of fabrics from latex, to wool, to wovens and sheer fabrics. I have used different screen printing techniques to create textured raised surfaces and flat surfaces with the impression of texture to bring the prints to life.

ROWAN STALLAN PORTFOLIO



Carpet in the hotel



Lamp Lee

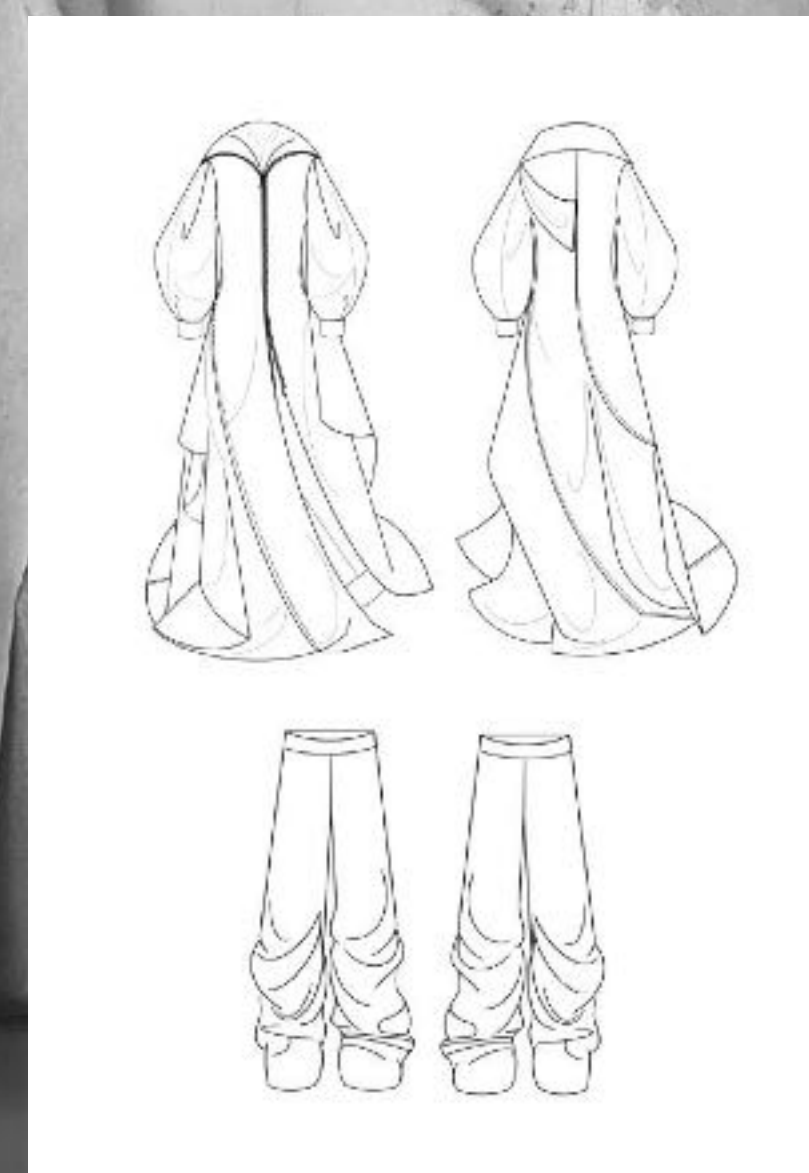
# WEATHERED



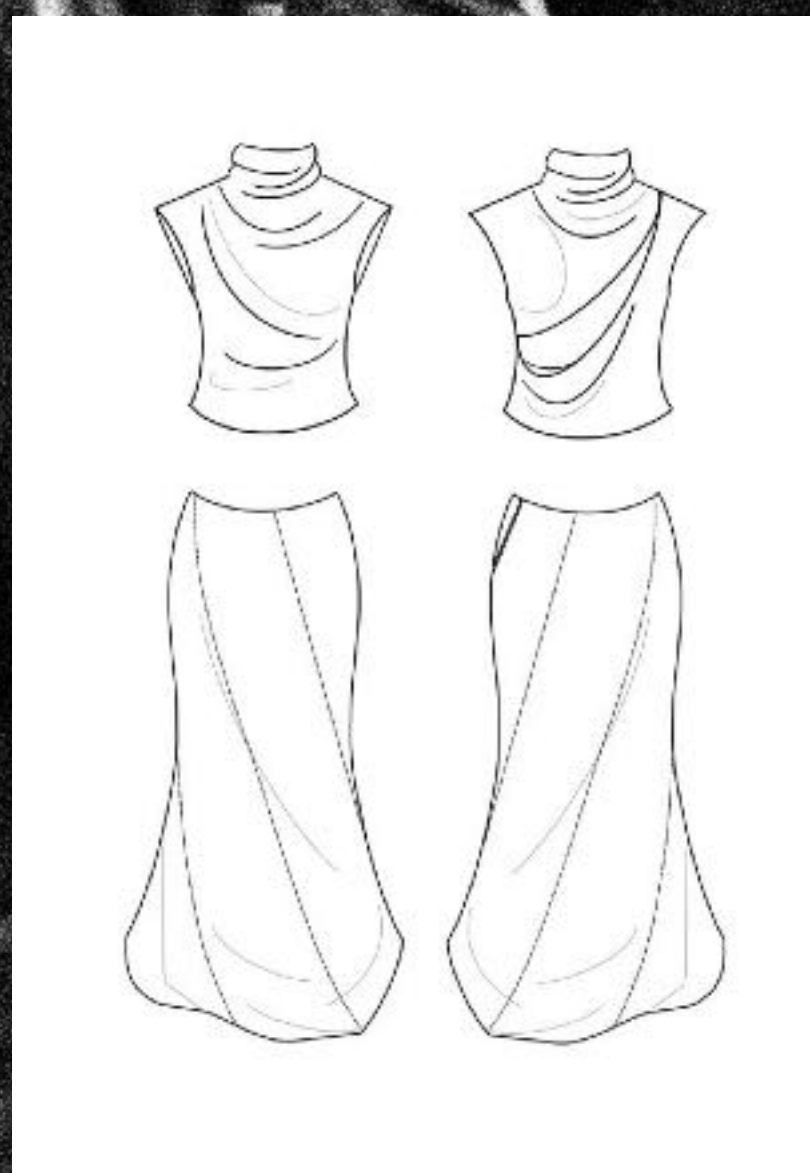


LINE UP

















ROWAN STALLAN GRADUATE COLLECTION AW/22









