



**RECLAIM
THE
NIGHT.**



CONCEPT

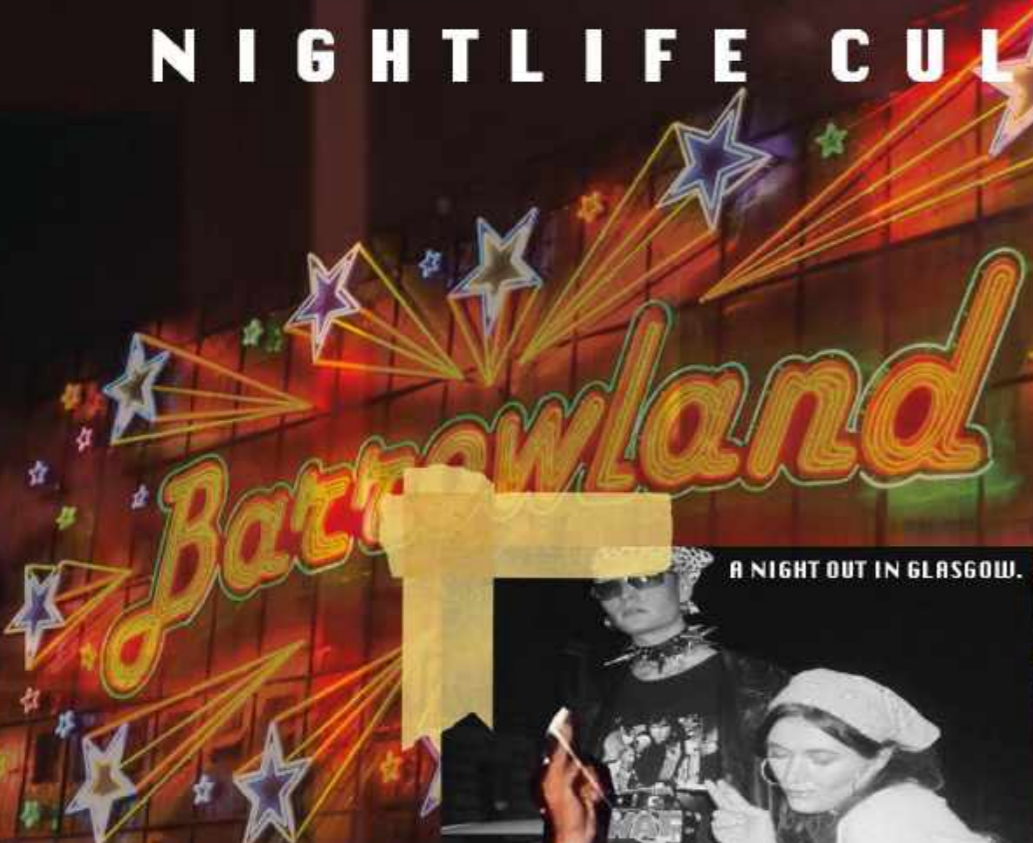
'Reclaim the Night' is inspired by clubbing culture and the community, escapism and liberation of self expression clubbing has to offer over the decades. However, due to the rising issue of the spiking, violence and predatory behaviour, it's important to highlight that spaces that were once made for people to connect and have fun is now a dangerous activity for many groups.

The project being with my nostalgia of clubbing with friends before the pandemic and looking into infamous clubbing scenes such as, 1980's Blitz kids and the current LGBT+ scene in Glasgow. Looking into Queer media throughout the decades and how the subgroup subverts religion, celebrates individuality and how it offered protection for marginalised communities.

This is a celebration of club culture but it's also important to look at the dangers. This led to an investigation on what makes clothing sinister and how in film, clothing is used as an indicator on which character has ill-intent. This symbolism of sinister fashion is to be used reflect on the unease and real fear women and minorities feel at night. This collection is a campaign for clubgoers, as with safe spaces disappearing it is now more important than ever to Reclaim the Night.

RESEARCH

NIGHTLIFE CULTURE



THE SAFETY OF WOMEN IN NIGHTCLUBS

Night clubs and discos are the epicentres of pop culture. They are the **gathering places** of the avant-garde that question the established codes of social life and experiment with **different realities**. There's many examples of how clubs merged interior and finiture design, graphics and art, light and music, fashion and performance to create an atomsphere and a total work of art.

Clubs offer a stage for the individual performance and **collective experiences**. They are places **to see and be seen**. Clubs are democratic, from communities, and create identities. But they are also **exclusive**; not everyone is admitted. Clubs are mostly ephemeral, driven by an ethos of experimentation and improvisation. Their interiors and their success are often limited in time, and yet their effects can be lasting.

Clubs belong to the city. A vital **club culture** emerges where the urban fabric offers ample freedom. And even, or perhaps precisely, in the digital age, clubs convey the longing to collectively engage with space, music and intense sensory experiences.

WE DESERVE TO FEEL SAFE



Six women report being spiked by injection during nights out in Brighton

Demonstrators take to streets across UK to protest against 'spiking epidemic'

'Drinks, needles... what next?' Inside the terrifying spiking scandal on UK campuses



THE CLUBBING SCENE IN GLASGOW 2021.

QUEER MEDIA

This documentary focuses on drag queens living in New York City and their "house" culture, which provides a sense of community and support for the flamboyant and often socially shunned performers. Groups from each house compete in elaborate balls that take cues from the world of fashion. Also touching on issues of racism and poverty, the film features interviews with a number of renowned drag queens, including Willi Ninja, Pepper LaBeija and Dorian Corey.



PARIS IS BURNING (1990)



POSE (2018)

DOCUMENTARY OF CLUBBING CULTURE AND QUEER SAFE SPACES.

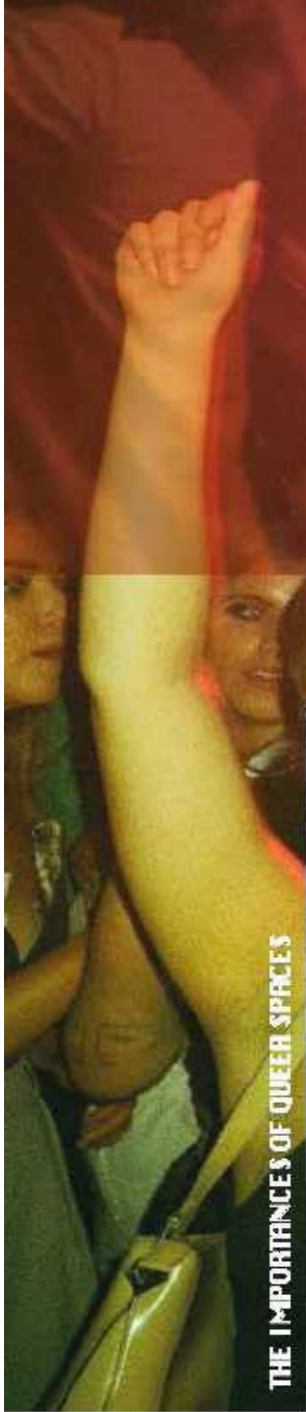
Leigh Bowery was an Australian performance artist, club promoter, actor, pop star, model, and fashion designer, based in London. He is considered one of the more influential figures in the 1980s and 1990s London and New York City art and fashion circles influencing a generation of artists and designers. His influence reached through the fashion, club and art worlds to impact, amongst others, Meadham Kirchhoff, Alexander McQueen, Lucian Freud, Vivienne Westwood, Boy George, Antony and the Johnsons, John Galliano, the Scissor Sisters, David LaChapelle, Lady Bunny plus numerous Nu-Rave bands and nightclubs in London and New York City which arguably perpetuated his avant garde ideas.

THE SCENE

CAMP FASHION



THE IMPORTANCES OF QUEER SPACES





BLUE:
The colour blue has strong links to the virgin Mary, linking to heaven, pure and motherhood, everything a society thinks a 'good women' should be.

RED:
The Scarlet women, how a woman in red is depicted as sexual, morally dubious, a link to Mary Magdalene and the 'Bad Girl Troup'



SIGNIFICANCES OF COLOUR

FABRIC SAMPLES



TOILE OF TAILORED JACKET



DEVELOPMENT



Addressing the issue surrounding waste and the leather industry. Finding ways to use off-cuts to insure the entire skin is used.



COLOUR SWATCHES



WORKING WITH TEXTILES.

USING A MIXTURE OF PRIMARY CLUBBING RESEARCH AND TRADITIONAL TAILORING THAT LINK INTO SINISTER FASHION.

CREATING A SILHOUETTE THAT WOULD BE SUITABLE WITH THE TEXTILES.

FIRST DRAFT OF TOILES.

EDITS OF TOILES.



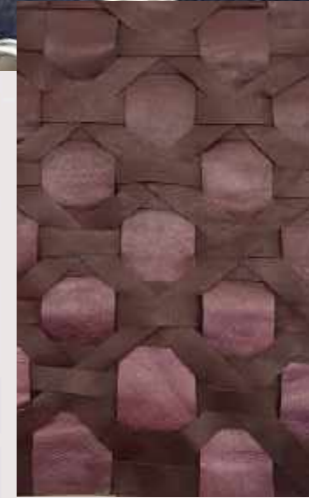
DENIM MINI DRESS

PROTOTYPES



USING SIMPLE SILHOUETTES THAT HOLD IT'S SHAPES WITH THE HEAVY WOVEN LEATHER.

PAINTED GRADIENT LEATHER



LINE-UP



