

# SHE'S A BAD APPLE

MARTHA WIGLEY  
PORTFOLIO



# GUY 39

'She's a bad apple,' researches into the attributes and characteristics surrounding the view of 'un-ladylike' or 'inappropriate' women. My research developed from the women hounded by the media for partaking in activities such as taking recreational drugs, smoking, partying and behaving freely, to the views of rebellious women shown through fashion magazines. The title of my project has therefore become; She's a bad apple. This both reflects the modern day view of bad women, but also helps to explore the perception of ill mannered girls throughout history. I have focused on adding inspiration from the punk era through old fashion magazines and photography books, as the views of women during this period were often thought of as going through a 'phase.'



ABUSE, LYRA  
A LOT OF VIBRA  
MY PUS  
CHRIS  
A BIG  
NO SP  
TO ST  
FUCKIN  
DIGIT  
ORAL T  
FOR SN  
BETTES A  
MOSBE  
DIGIT  
ER SIM  
H O N N  
HANDS  
COCKED  
SEEKS BIG  
GUY 39



GUY, 39 →  
SEEKS BIG  
COCKED  
HANDSOME  
HORNY  
BRAINY  
DIRTY  
MADS (BEER  
WIFE) A BEARD  
PENETRATING  
ORAL TORTURE  
DIGITAL & MUTUAL  
PUNTING ALSO KEEN  
TO START FEELS  
NO S4M SH100NY  
A BIG NO TO  
CHRIS SEANS  
MY PUS VIB  
ALOT ON PSLA  
ABUSE, LYCHA  
& OTHER URGINE ATSS  
CLICK ON 071 700

WEIRD & HEAVY  
GUY, 39 →  
SEEKS BIG  
COCKED  
HANDSOME  
HORNY  
BRAINY  
DIRTY  
MADS (BEER  
WIFE) A BEARD  
PENETRATING  
ORAL TORTURE  
DIGITAL & MUTUAL  
PUNTING ALSO KEEN  
TO START FEELS  
NO S4M SH100NY  
A BIG NO TO  
CHRIS SEANS  
MY PUS VIB  
ALOT ON PSLA  
ABUSE, LYCHA  
& OTHER URGINE ATSS  
CLICK ON 071 700

My research throughout this project has developed from primary and secondary imagery which would then inform samples and design ideas. I have gathered fashion and lifestyle magazines published through the 20th century which focus and capture women deemed as inappropriate and 'unlike.' This research has inspired me to complete my own photoshoots for developing this idea of women who stand out for their uniqueness.

SEEKS BIG COCKED  
ORAL TORTURE  
DIGITAL & MUTUAL

Inappropriate

# HANDSOME HORNY



Through collecting photographs of explicit natures in opposing medias, it is clear that there are strong lines shown through the public perception of tasteful and tacky nudity. Through Ben Westwood's nude and provocative images, to exposed skin seen on female public figures, I have developed an understanding of the judgment often associated with sexual connotations



'Phase 2'



# BRAIN DIRTY



While looking at female punk influences seen through fashion magazines in the 90's, it is apparent that the focus on women's appearance is detrimental to people's perception of behavior and femininity. The contrast of a 'good' girl vs a 'bad' girl was therefore a design focus within this project.

GUY, SEEKS SOCKS  
BELLIE SWING  
FOR DIGITAL  
ORIGINS  
EVRO  
NO A CHY  
ALOT OF VERB  
ABUSE, LYCRA  
& OTHER GENUINE ATTENTION.



LADS (BEER  
BELLIES



I have sampled to create a contrast of the rugged and harsh punk aesthetic with the contrast of the delicate and ultra feminine. Through this line of research I have recycled old bottle caps and jewellery to create fabric manipulation and embellished samples.



The colour pallet for this project was entirely formed through collecting research imagery and second hand material. 80% of my final collection is to be made from second hand fabrics, from curtains to bedsheets.



FOR SNOGGING

GUY 3) →  
 SEEKING  
 GO  
 H 4 250  
 H  
 B  
 I  
 W  
 B  
 B  
 OR SNOG  
 ORAL T  
 DIGIT  
 &  
 FUCKING ALSO  
 TO START  
 NO S  
 I  
 A BIG NO TO  
 CHRISTMAS  
 MY PUSY NEED  
 ALOT OF  
 AED

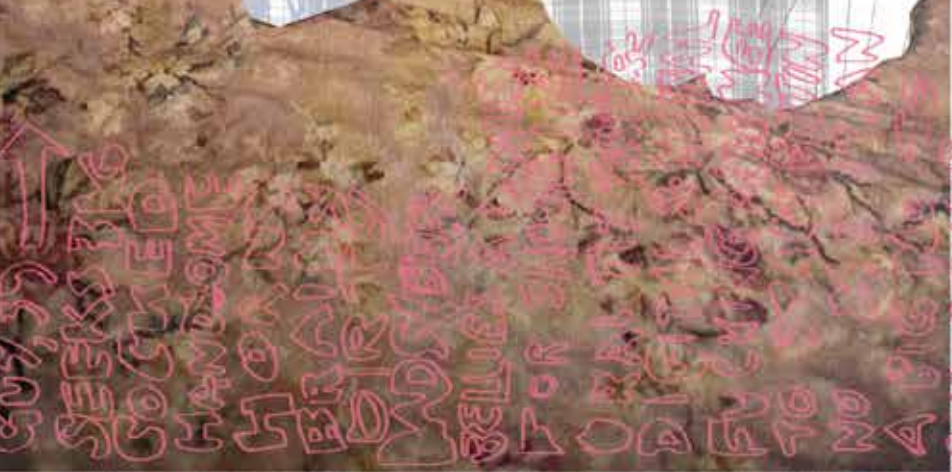
Sustainable  
 Recycled

# ORAL STRUCTURE

Print



In order to create a blasphemous and shocking print seen throughout my designs and concept, I have created an illustration inspired by a Sex Ad seen on the cover of an I-D Magazine. This became a main screen print within my collection, as it showcases the startling feeling towards explicit attributes of women.



COCKED  
WDS(BEER)  
HELLIES A BR  
FOR SNOG  
ORAL TRIP



# DIGITAL & MUTUAL FUCKING ALSO KEN



Through continuously sketching ideas of shape and silhouettes throughout this project, I have initiated my design development, through drawing from primary and secondary imagery. The constant focus in this project of the push between 'feminine' and 'explicit' clothing, continues to evolve through my silhouette development.

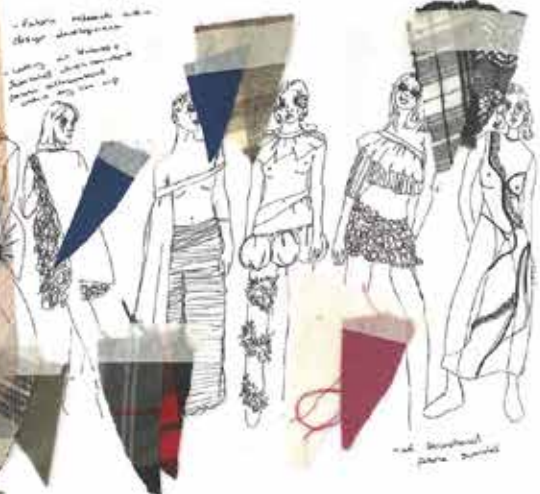






I have continuously sampled using second hand bottle caps, to inform further design development and silhouette ideas. Through drawing from my sampling and placing on the mannequin I have been able to create new shapes and silhouettes which challenge the idea of 'distasteful' nudity.

TO START FISTING,  
NO SM SHIT AND



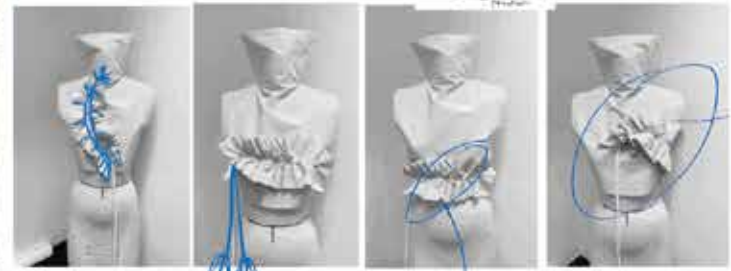
# A BIG NO CHRISTMAS

My wide range of design development techniques are seen through my toiling, garment displacement, sketching and sampling. Within all of these focuses I have constantly referred back to my project's aim of revoking a new perception of women's attributes.

Design Development



Second hand

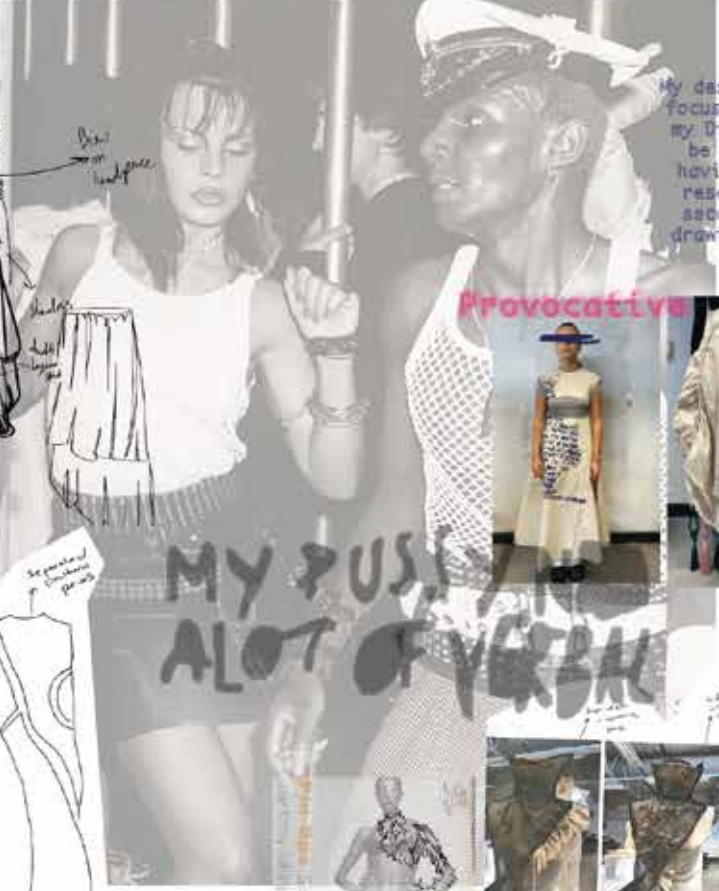


Textile

GUY, 99 →  
SEEKS BIG



silhouette research  
NO SEM SHITLAND  
A G NO TO  
CHRISTMAS  
MY PUS  
ALOT OF VERBA  
AISE, LYCA  
A OTHER GENUINE ATTE



My design development through this project focuses on an aspect spoken about through my Dissertation looking at how women can be seen as explicit and crude, whilst having no exposed skin. This has led to research through collaging primary and secondary images and drawing technical drawings to initiate silhouette development.

Provocative

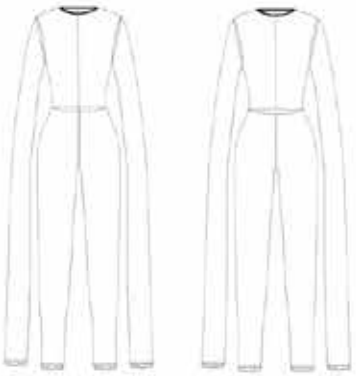


to make the skirt plain

to make the skirt plain



## OUTFIT 1



The first outfit in the collection is manufactured using second hand curtains for the main fabric, and second hand bed sheets for the lining. The toggled curtain tassels are sourced from charity shops to continue with the design ethic of being environmentally conscious. The two layer dress creates the illusion of explicit and provocative styling through visible breasts, while having no exposed skin. The lace itself mimics the pattern of tattoos, creating an un-feminine effect, contrasting with the intricate top layer design.

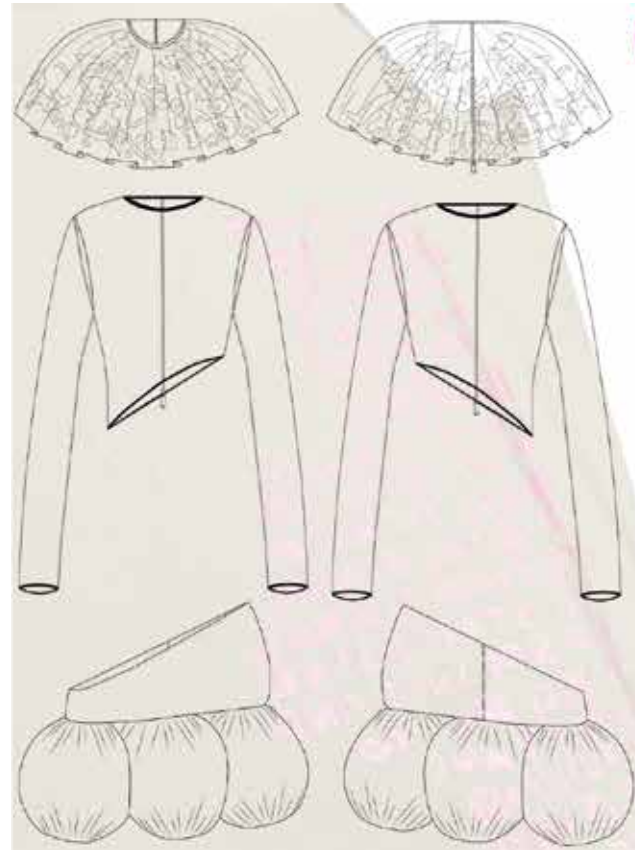
## OUTFIT 2

The second outfit in the collection is made from the same tattoo style lace, second-hand curtains, and deadstock Craig Green fabric. The trousers create an oversized look as I have sewn rows using shirring elastic which gathers the fabric. The two layered tops allow for the consumer to wear individually, as well as altogether.



### OUTFIT 3

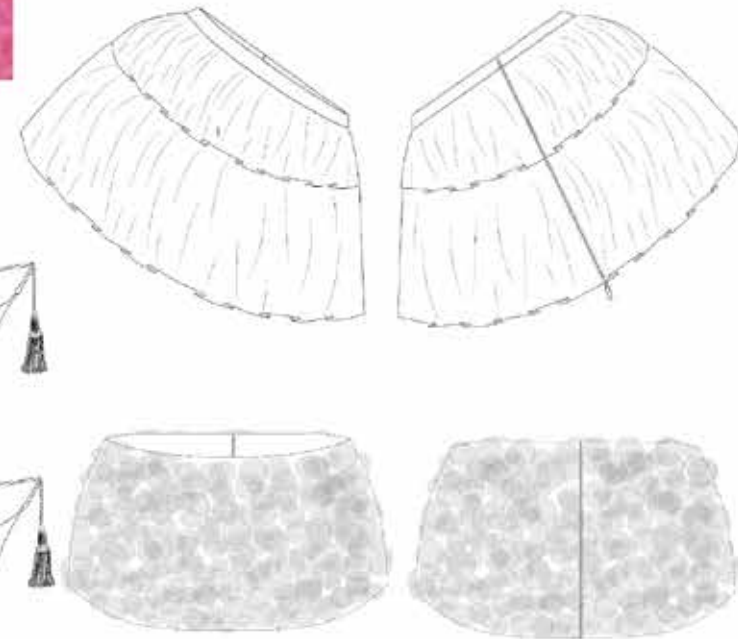
### OUTFIT 4



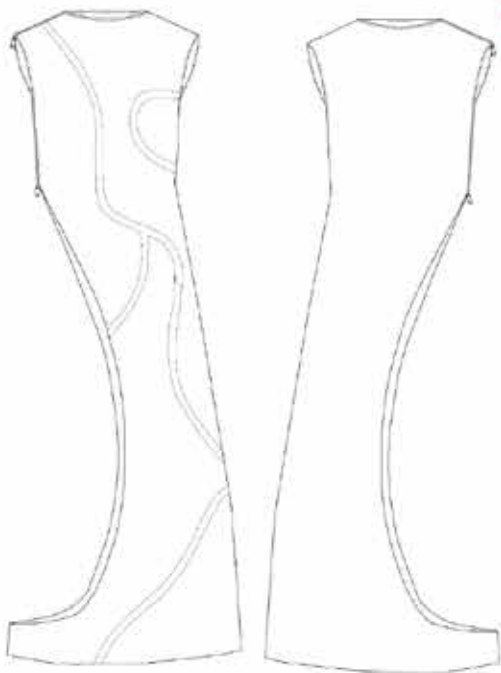
The third outfit in the collection is made from three sets of second hand curtains, as well as including the recognisable tattoo lace. The puffball asymmetric mini-skirt and couple layered top plays with the idea of tasteful versus tacky nudity, with an excess of exposed skin.



The fourth outfit in the collection is made from second-hand curtains and bedsheets. The light pink shibori skirt will be created using a layer of second hand net curtains. These curtains will be manipulated by using recycled bottle caps which are then bound and boiled with the fabric to allow the fabric to hold the circular shape. This effect also allows for the skirt to be more malleable for the wearer. The exposed undergarments speak back to the concept title, looking at how inappropriate exposure of clothing is often more shunned upon than nudity itself. The two layer ruffled top, manufactured from second hand curtains, hangs over the shoulder, creating a cape like style.

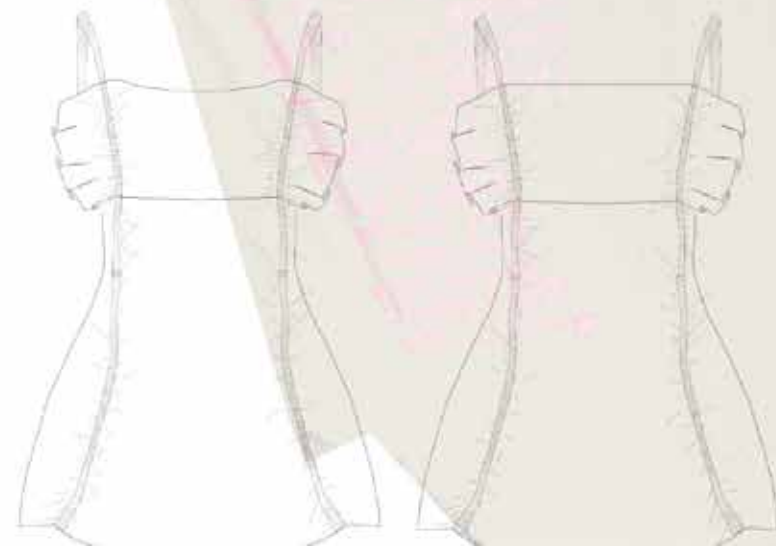


## OUTFIT 5



The fifth outfit in the collection is manufactured from second-hand curtains and end of roll fabric. The cut out dress and long shorts juxtaposes the idea of feminine and masculine styles. The shorts and overlaid dress allows for the pieces to be mixed and matched with other outfits, experimenting with differing amounts of exposed skin.

## OUTFIT 6



The last outfit in this collection is created using deadstock Craig Green fabric and second-hand curtain tassels. The stocking socks are adjustable through the use of toggles, allowing the consumer to personally style how to wear them. The mini dress is fully ruched in by adjustable tassels, allowing ease for the consumer, as well as allowing for the wearer to decide on how ruched to wear the dress.