

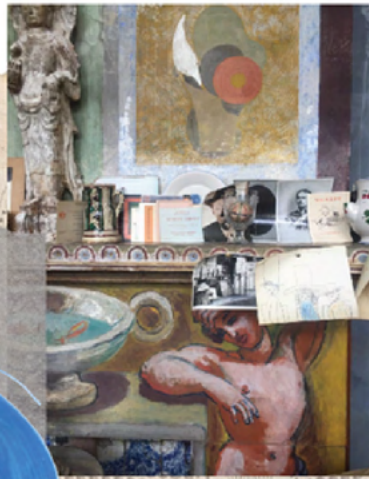
LOVING IN TRIANGLES

This collection will be a display of the perfect mix of **eclectic** and **contemporary** flair, harking back to the philosophy of the **Bloomsbury group**. Their way of life, often summed up as *"living in squares, painting in circles and loving in triangles"* becomes the source of inspiration for this collection.

Through the use of rich colours and **expressive** textures, a story is created around heritage, craft, and community. The aim is to inspire the nonconformist muses of now, encouraging consumers to curate and create their own dressing rituals. Therefore, the collection consists of garments that can be rediscovered season after season, promoting a belief in selecting rather than accumulating. Emphasising **practical** and multifunctional character classics will ensure longevity, while garments that can be confidently layered offer detail-driven designs.

Florence . L





"I do not think it matters whether one agrees or not as long as one is forced to think"



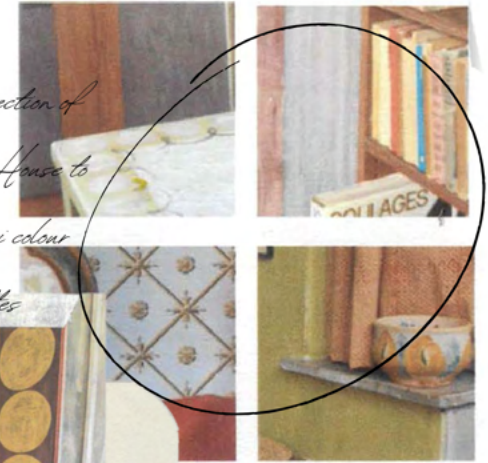
LOVING
IN
TRIANGLES

*Zoned in section of
Charleston House to
create mini colour
palettes*

Golden ochre / rust



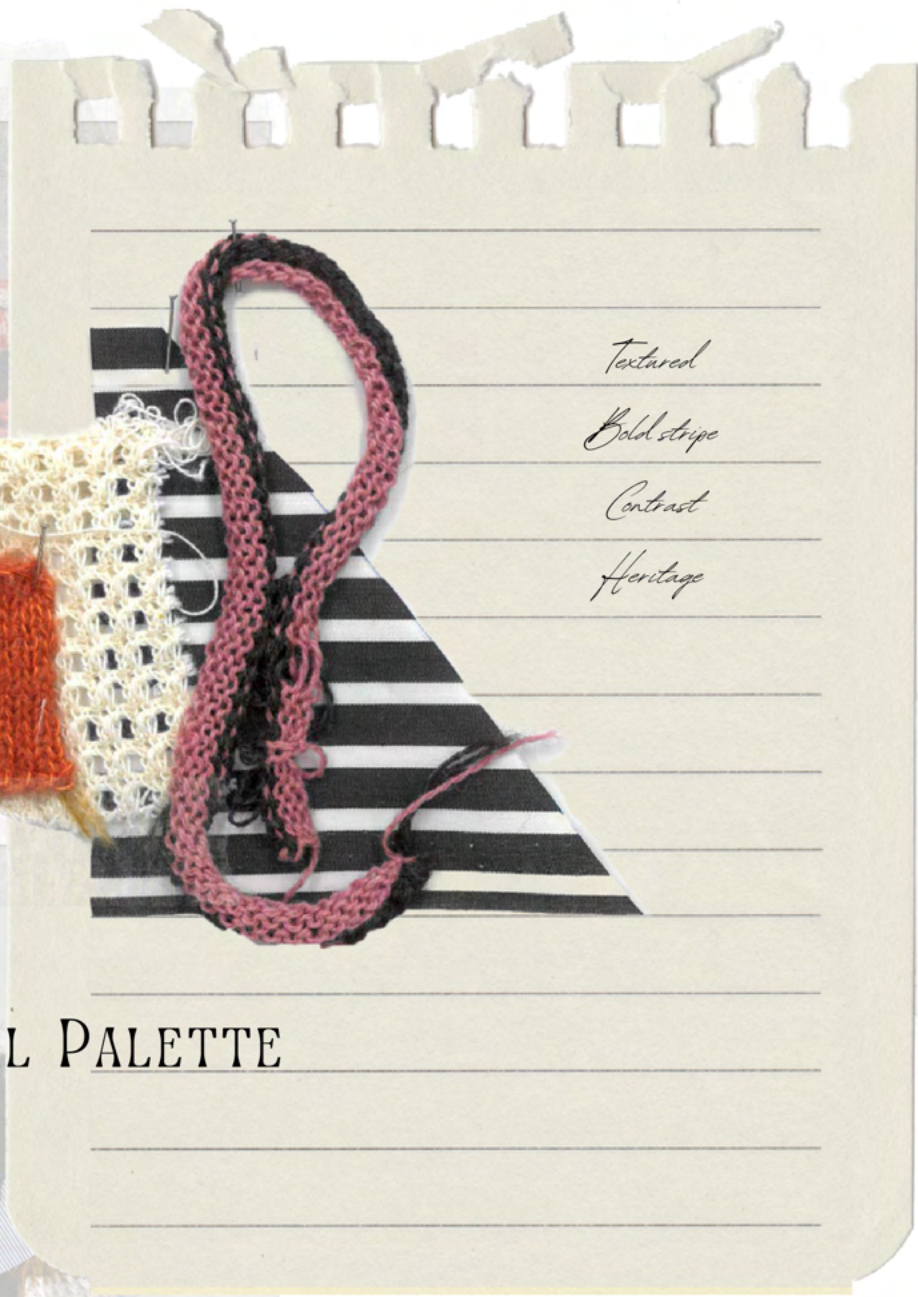
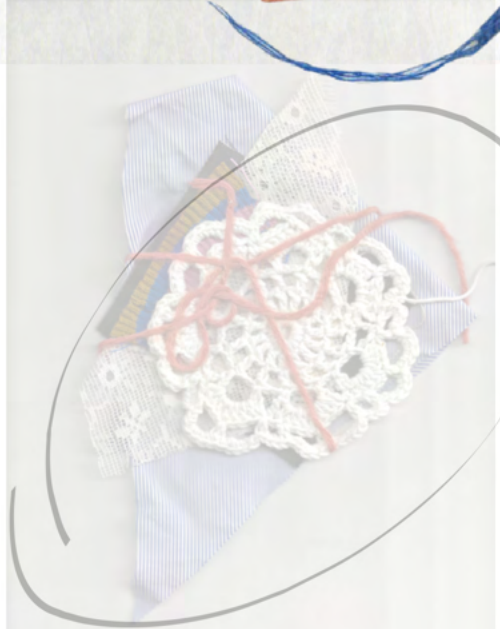
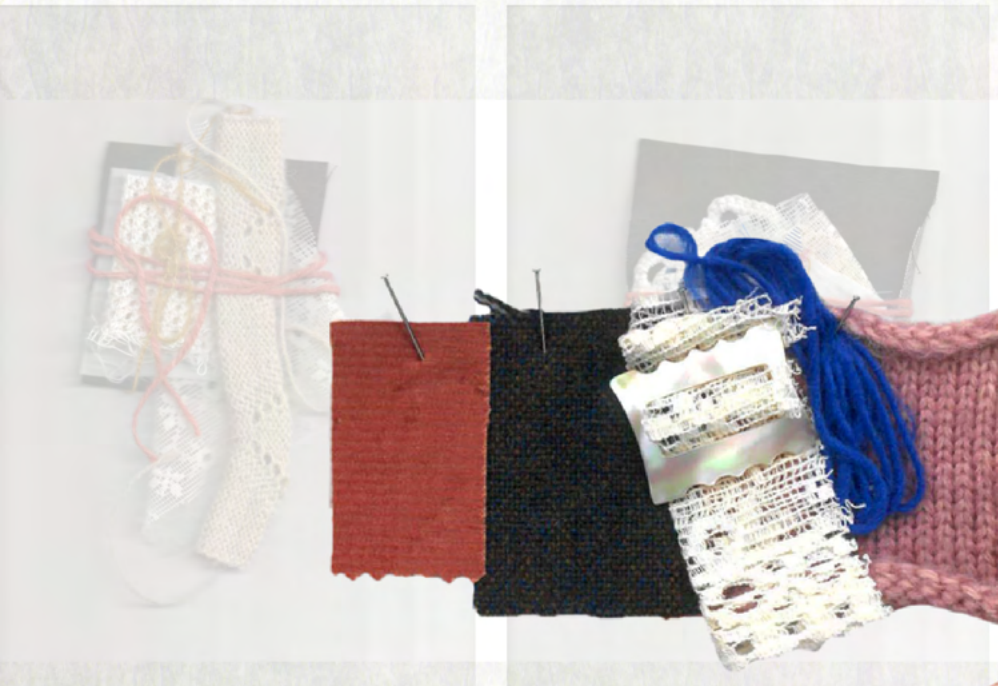
Charleston House - The photography



COLOUR DEVELOPMENT



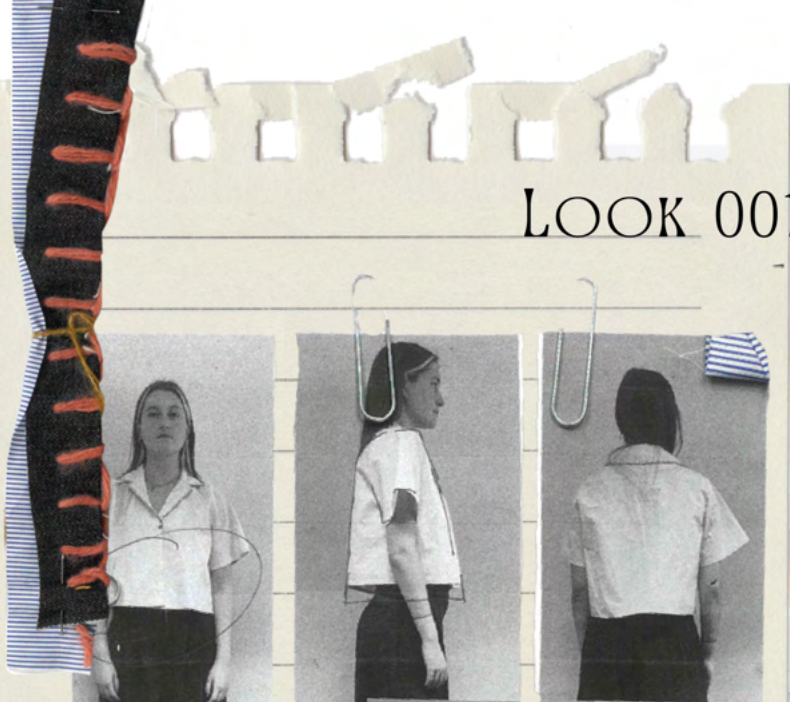
*Royal blue -
accent colour*



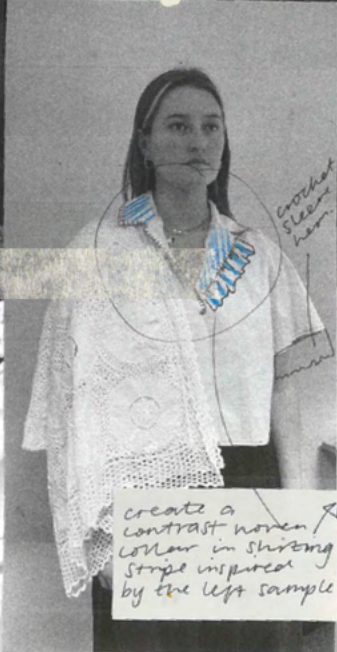
Textural
Bold stripe
Contrast
Heritage

MATERIAL PALETTE

LOOK 001 DEVELOPMENT



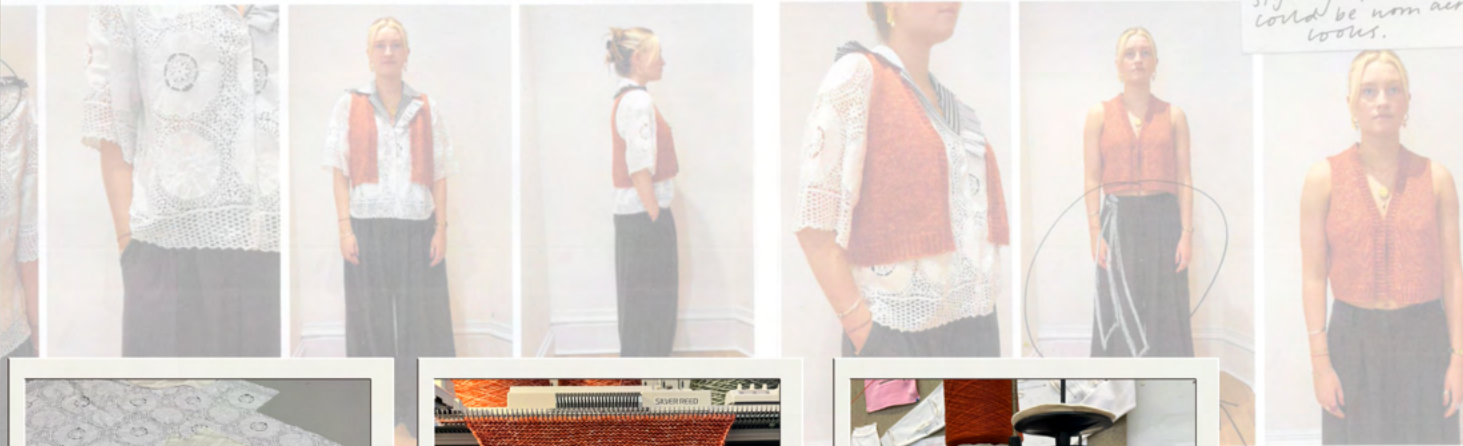
increase the shirt hem by 2-3cm to cover the trouser waist



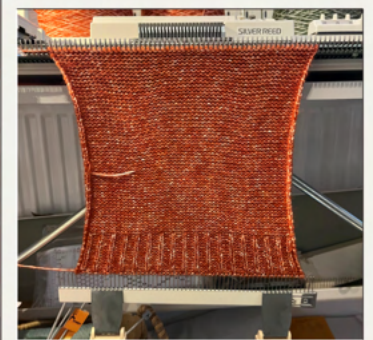
create a contrast woven colour in shirting stripe inspired by the left sample



Effortless and casual styling. The vest could be worn across looks.



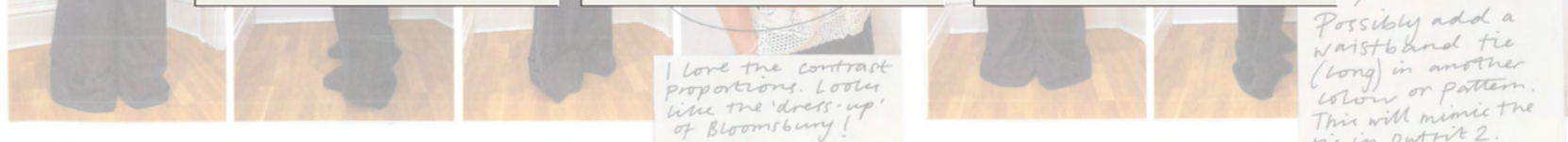
Shirt cutting



Knitting vest panels



Linking vest panels



I love the contrast proportions. Looks like the 'dress-up' of Bloomsbury!

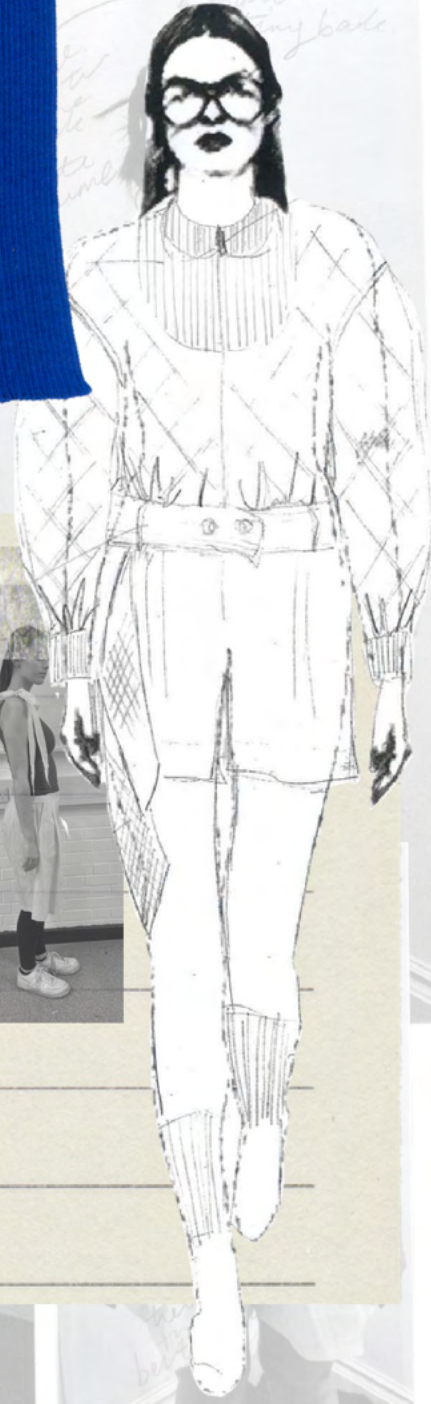
Possibly add a waistband tie (long) in another colour or pattern. This will mimic the tie in outfit 2.



embroidered seam detail



*create
after
my base*



Vest shoulder tie worn outside the pocket



TOILE FITTING

*Think about
pleats
↳ from front and back
How many?*

LOOK 002 DEVELOPMENT

LOOK 003 DEVELOPMENT

Outfit 3 style fitting



Shorten skirt by 1cm



Lylea Strachey & Lytton - at Ottobine Maud's



Margri Strachey & Lytton

Virginia Woolf photo album



Hand-stamped brand labels



Crossbody stripe bag



46
47
48
1
2
3
4
5
6
7
8
9
10
11
12
13
14
15
16
17
18
19
20
21
22
23
24
25
26
27
28
29
30
31
32
33
34
35
36
37
38
39
40
41
42
43
44
45

COLLECTION LINE UP





RUFFLE COLLAR SHIRT

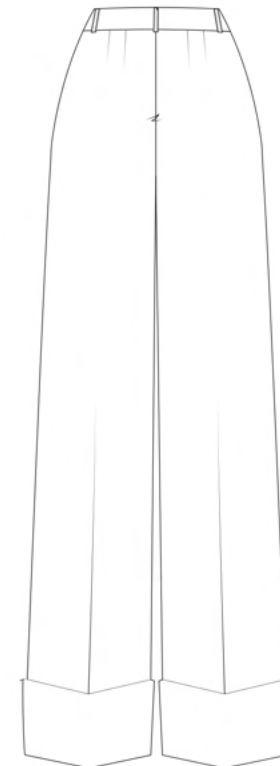
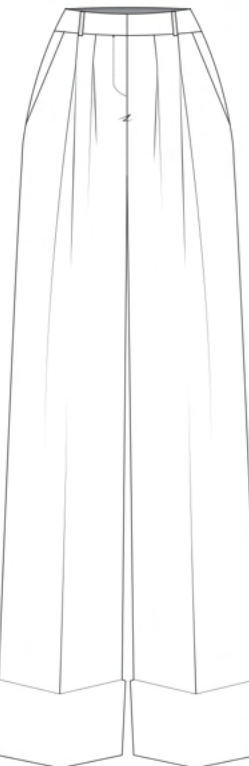
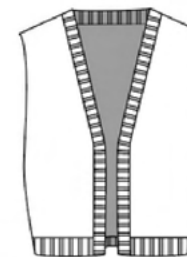
VINTAGE TABLECLOTH SHIRT WITH CUBAN STRIPED COLLAR AND RUFFLE EDGE

KNIT VEST

MARLED KNIT V-NECKVEST WITH COBALT BLUE BLANKET STITCH EDGE

100% WOOL TROUSERS

DEADSTOCK WOOL PLEATED FRONT TROUSERS WITH EXAGGERATED TURN UP CUFF AND WIDE RELAXED LEG



ARGYLE BOMBER JACKET

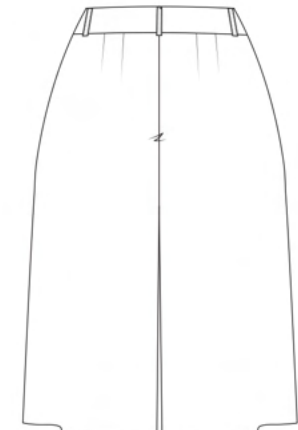
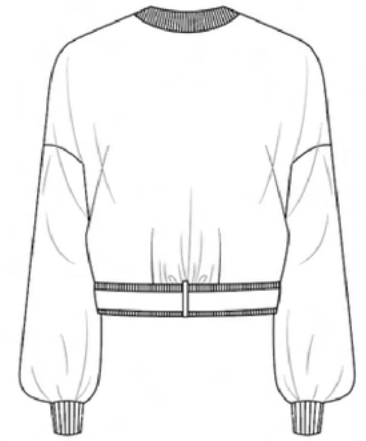
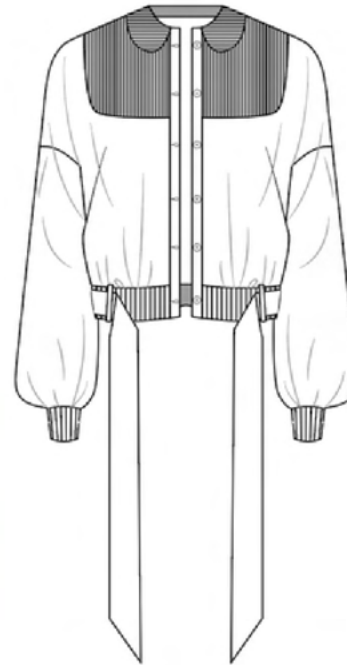
ARAN CABLE KNIT, TORTOISESHELL
BUTTONS, CORDUROY YOKE AND ROUND
COLLAR, STRIPE WAIST TIE

KNIT VEST

COBALT BLUE 2X1 RIB KNIT VEST, BOW TIE
SHOULDER DETAIL

100% WOOL SHORTS

DEADSTOCK WOOL PLEATED FRONT SHORTS
WITH TRADITIONAL EMBROIDERED SEAM
DETAIL





CABLE V-NECK JUMPER

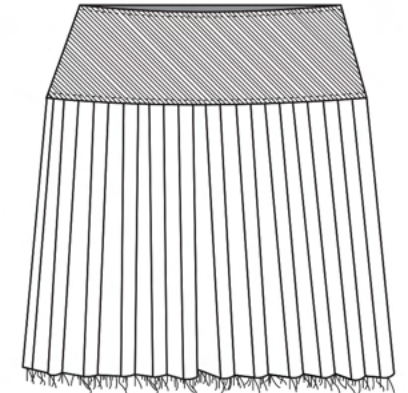
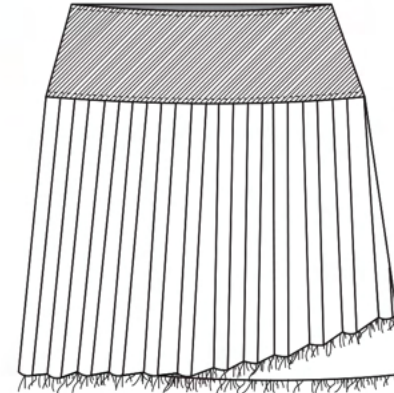
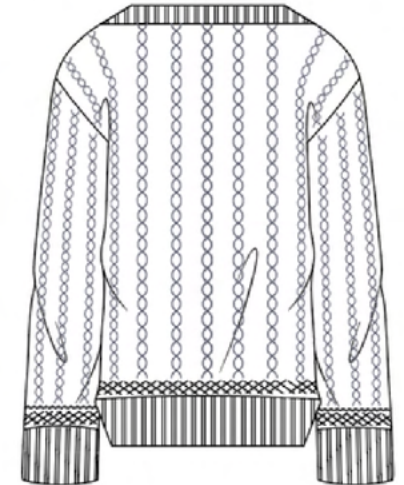
CABLE AND FAIRISLE PATTERN WITH BLUE TIPPING

CORDUROY PLEATED SKIRT

MINI ASYMMETRIC PLEATED FRONT WITH FRAYED HEM AND INVISIBLE ZIP CLOSURE

CROSS BODY BAG

100% COTTON STRIPE TSUNO STYLE BAG WITH AN ADJUSTABLE SHOULDER TIE





Florence . L



Florence . L



Florence . L



Florence .L



Florence .L



Florence . L



Florence . L