

Sense
of
Place

NOTTINGHAM
TRENT
UNIVERSITY

BA HONS
FASHION
KNITWEAR
DESIGN &
KNITTED
TEXTILES

HARRIET
HARRISON

COLLECTION CONCEPT

Womenswear
A/W '23



Plastic



Organic



Man-made



Rogan Gregory



Introspective



Ports 1961



Rick Owens



Embedded



Dyed



EXTRACT FROM PROJECT PROPOSAL

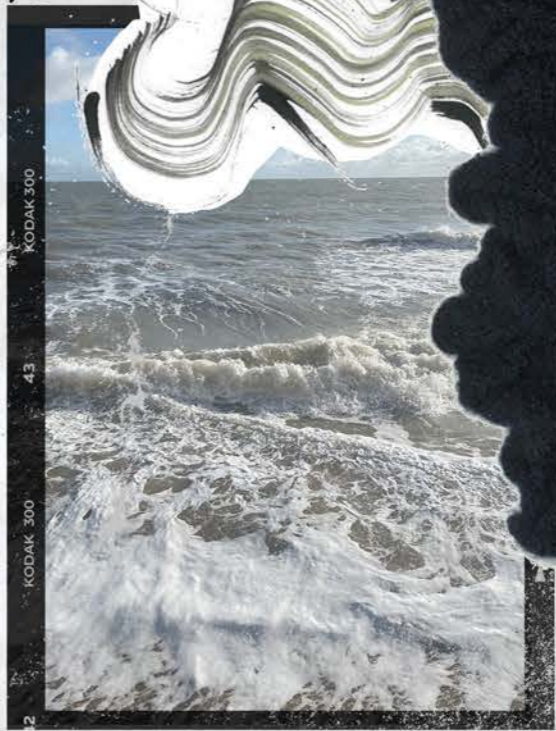
"Sense of Place" epitomises the **introspective** activity of strolling on a quiet Kentish beach on a winter's evening, disrupted by the occasional crashing of the waves, the furiousness of the wind and the lunar pull of the moon. Creating the solitary **emotional journey** you embark on whilst travelling **through the terrain**, conveying both the **stillness and the chaos**. The "Trash to Treasure" side of the concept has derived from the bewildering amount of **man-made waste** and litter observable on the beach during my walks.

I am motivated to incorporate sustainable design to combat the environmental issues surrounding fashion and textiles. The "Trash to Treasure" element of my concept aims to **upcycle** the litter sourced from the coast by featuring the discarded materials within garments and accessories throughout the collection. Exploring the ways in which the **trash** can be transformed into **treasure** after a series of upcycling processes will imbue **value** on the materials, increasing the longevity and **novelty of the collection**.

My final line up collection will consist of final resolved knitted samples, 3 resolved outfits and some accessories all marketed at **luxury level** and fit for catwalk. The collection will reflect the mood of the project whilst simultaneously promoting longevity and durability communicated in its materials, **make up and finishing's**.

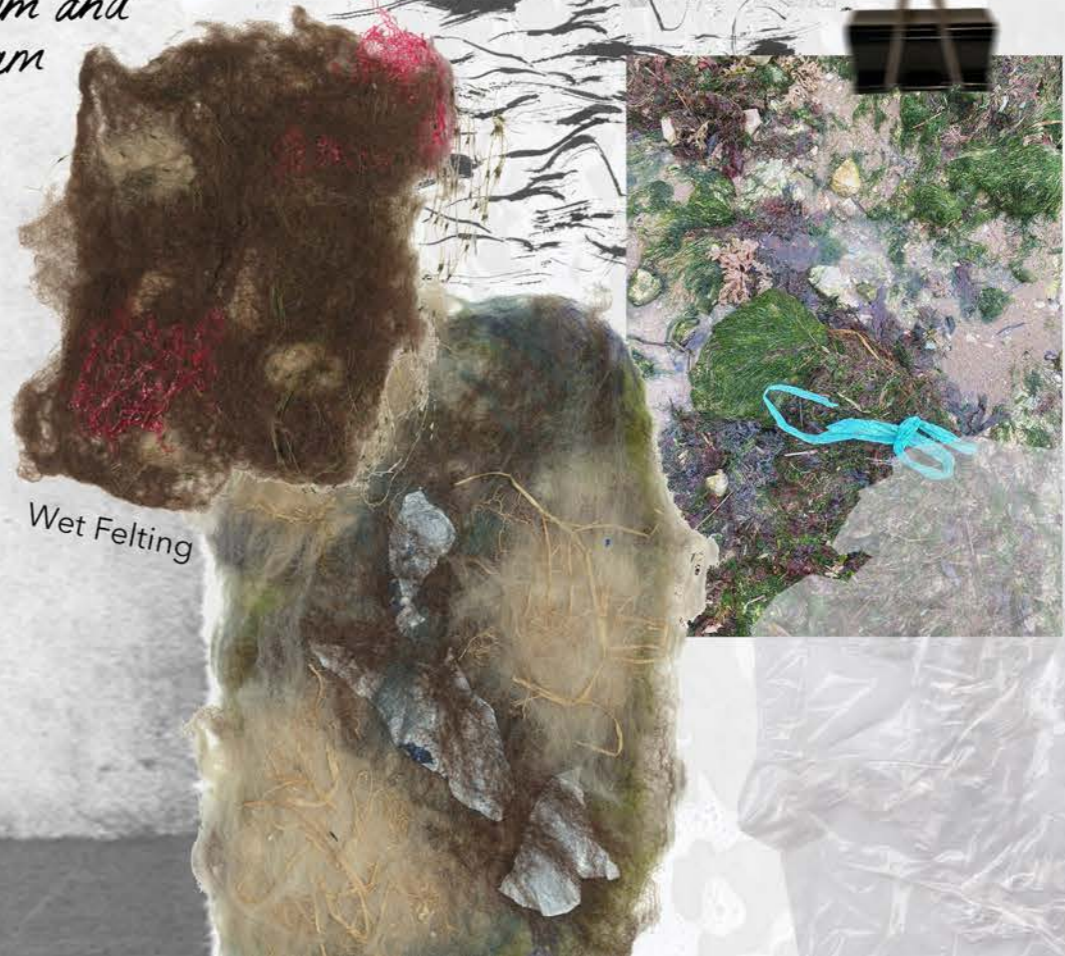
Primary Research

Hooking up to represent the ripples in the waves



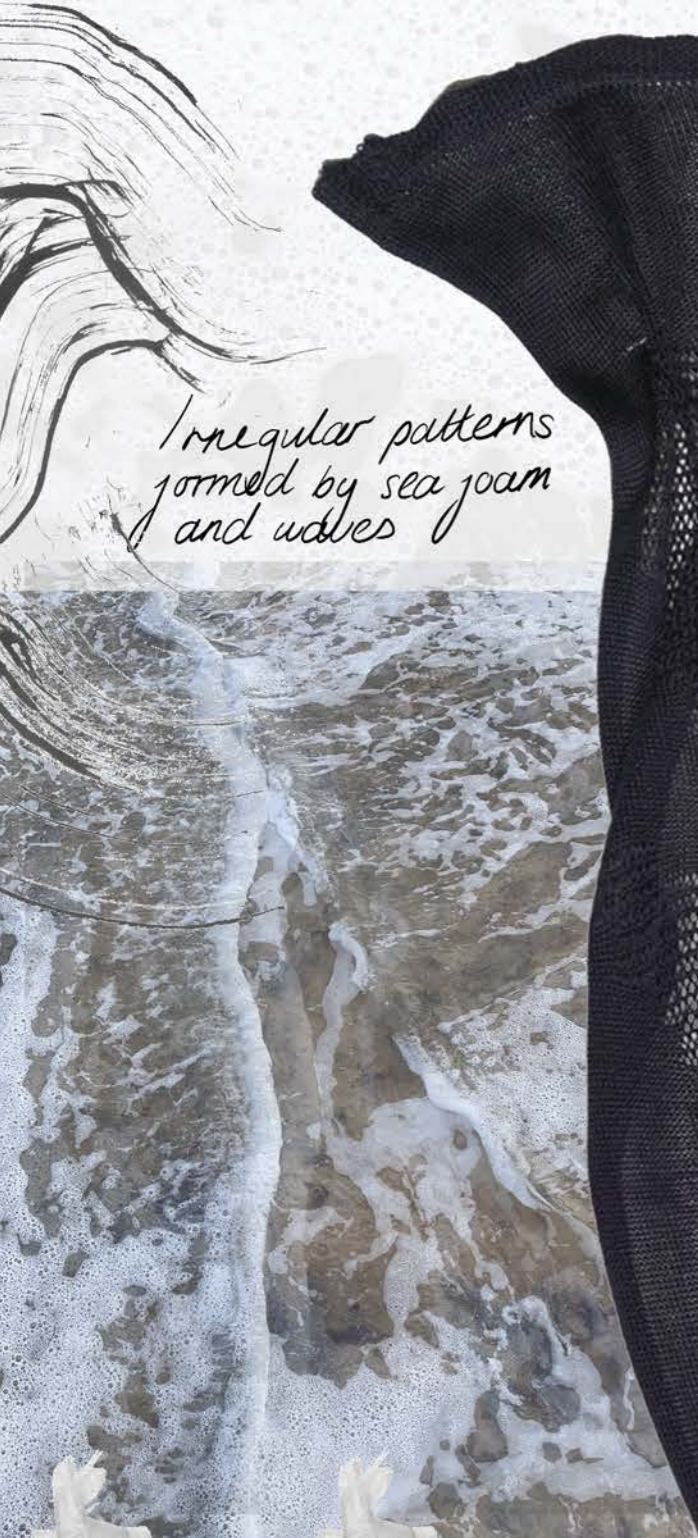
Standard Domestic Hooking Up

Felted samples with trapped litter to mimic jetsam and jetsam

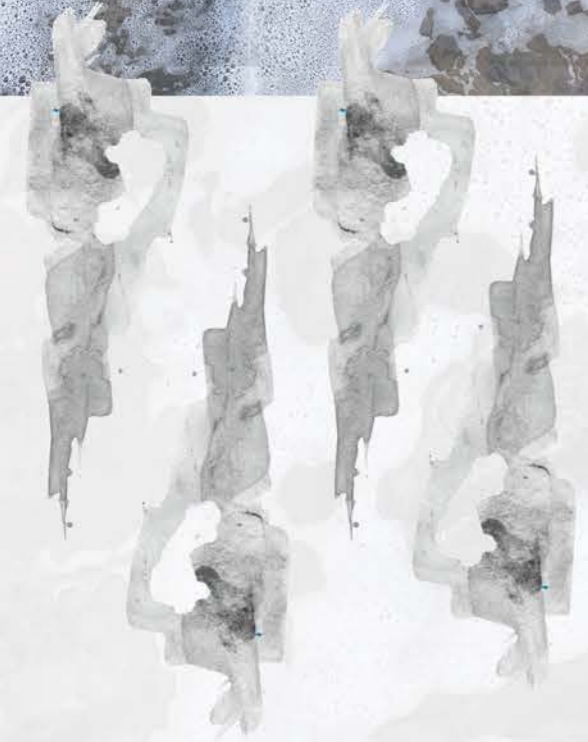


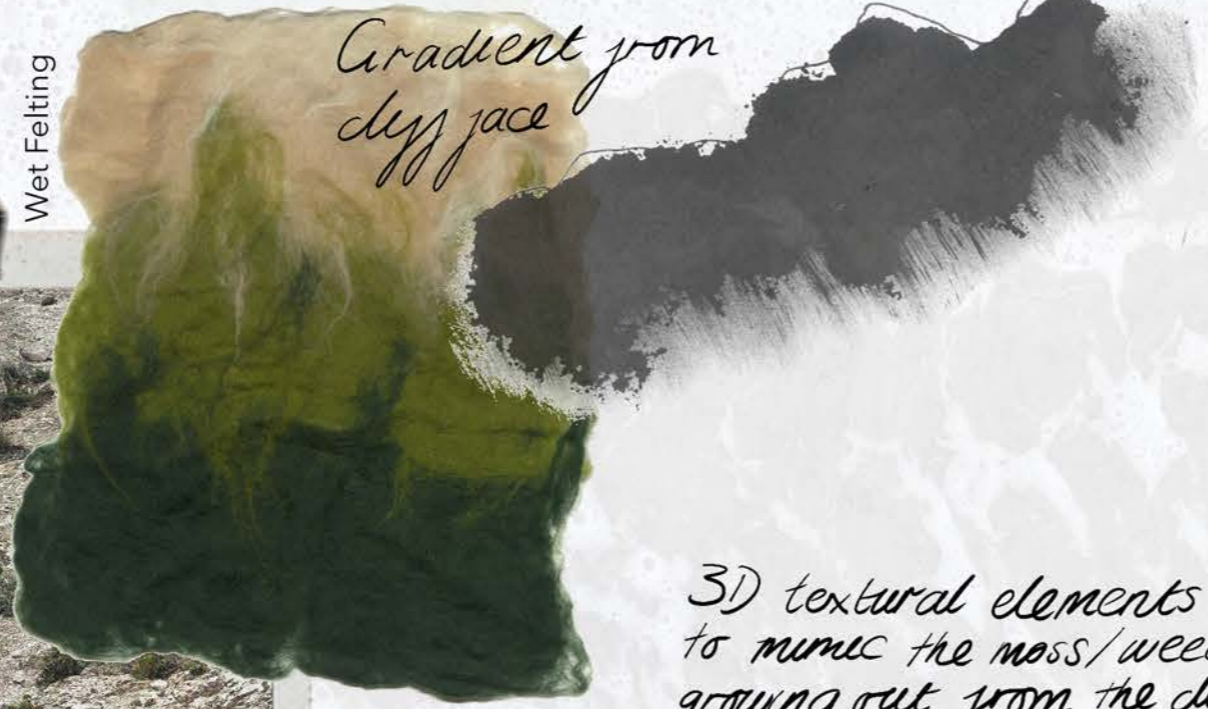
Wet Felting

Irregular patterns formed by sea foam and waves



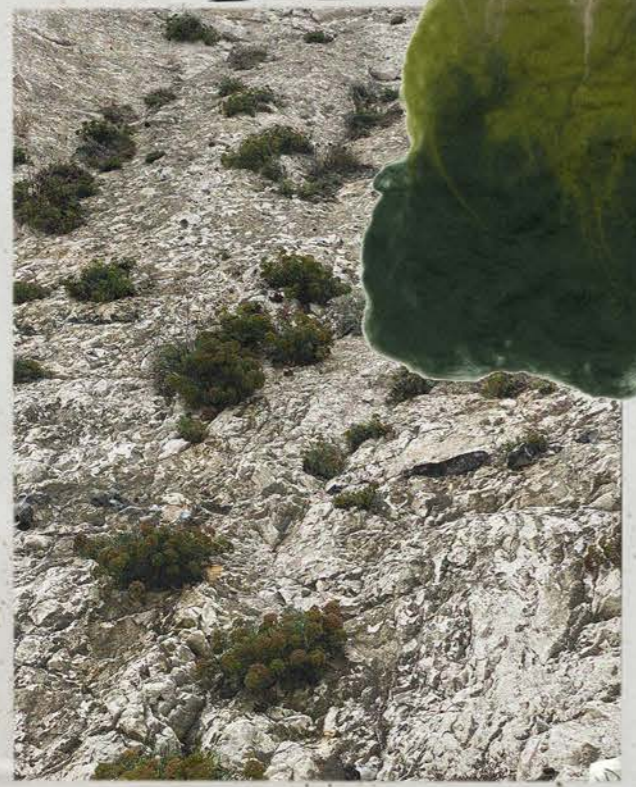
12gg Dubied Drop Stitch





Wet Felting

*Gradient from
dry face*



*3D textural elements
to mimic the moss/weeds
growing out from the dyff*



Primary Research



Standard Domestic
Hooking Up, Laddering and E-Wrap

Process in Steps

Textural 3D elements on distressed fabric



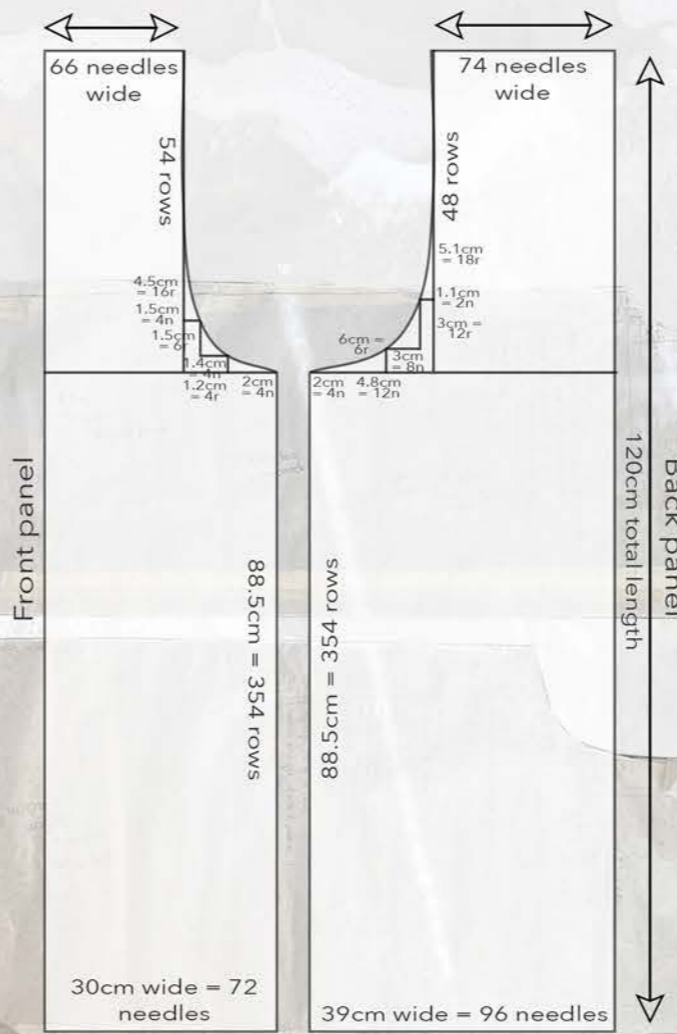
2x1 Folded trim with belt loops



Moss in uneven cliff face

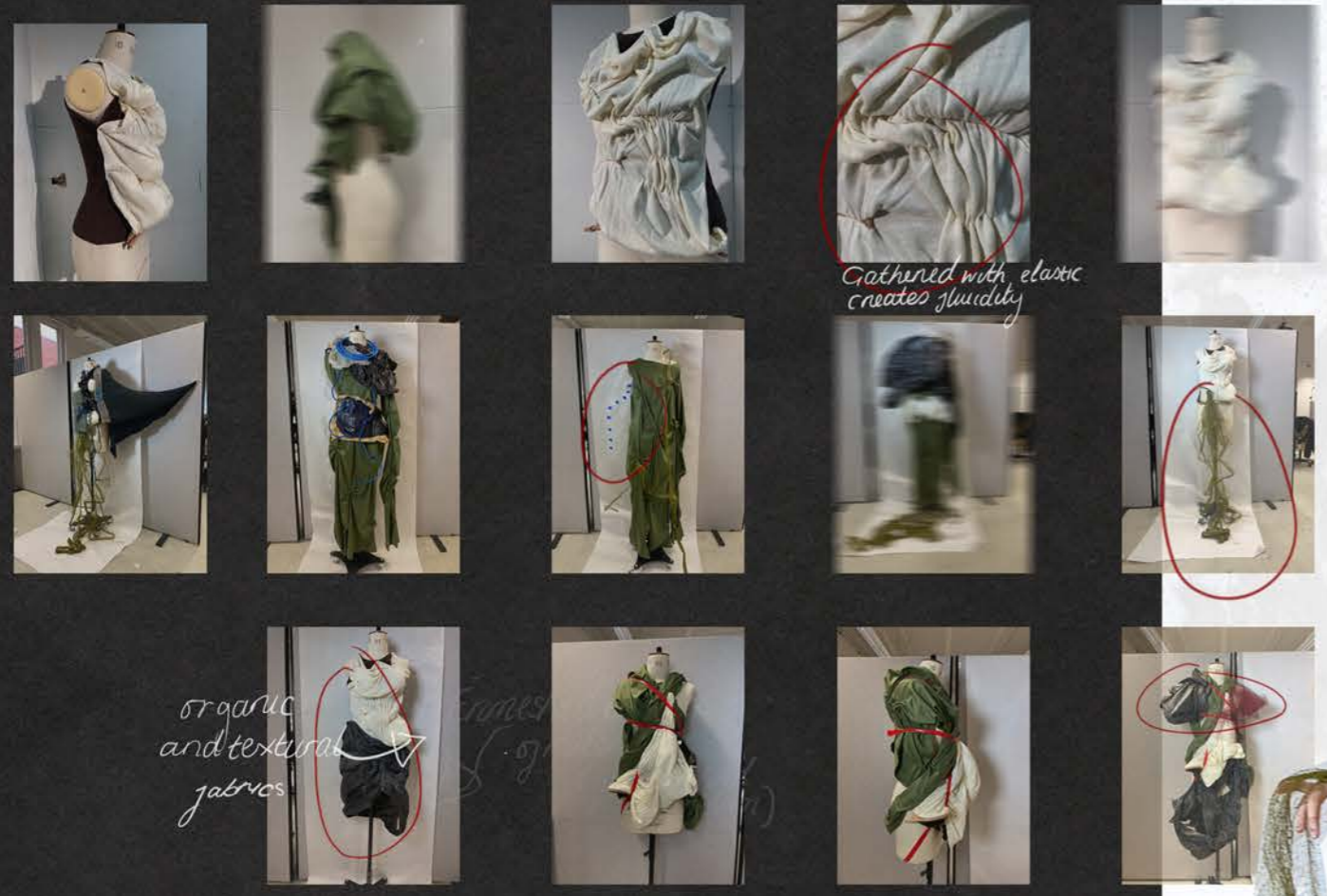


KODAK 300
43
KODAK 300



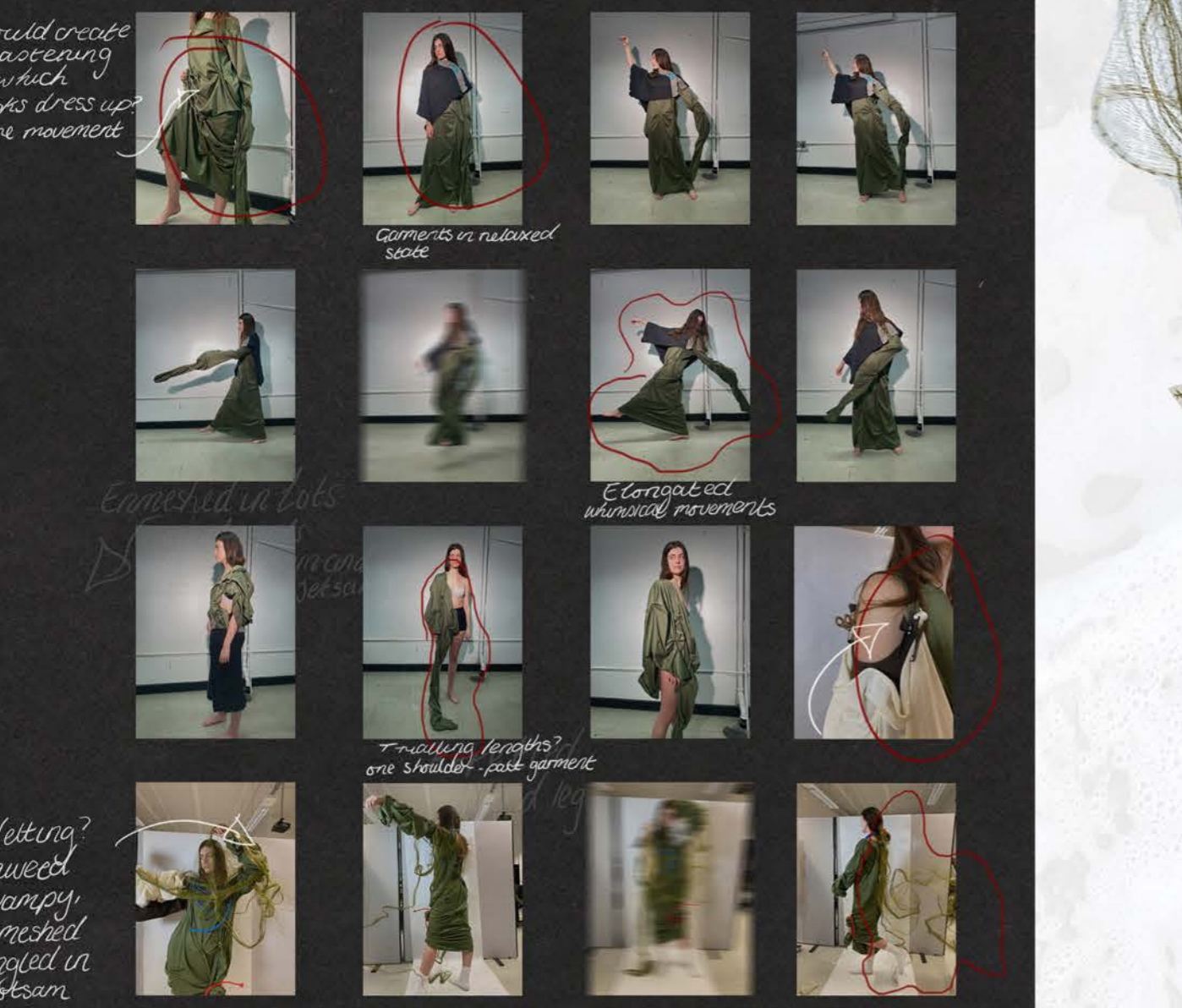
**MOSS TROUSERS
DEVELOPMENT & PROCESS**

TEXTURE & SHAPE



Gathered with elastic creates fluidity

organic and textural fabrics



could create a fastening which hooks dress up? More movement

Garments in relaxed state

Elongated whimsical movements

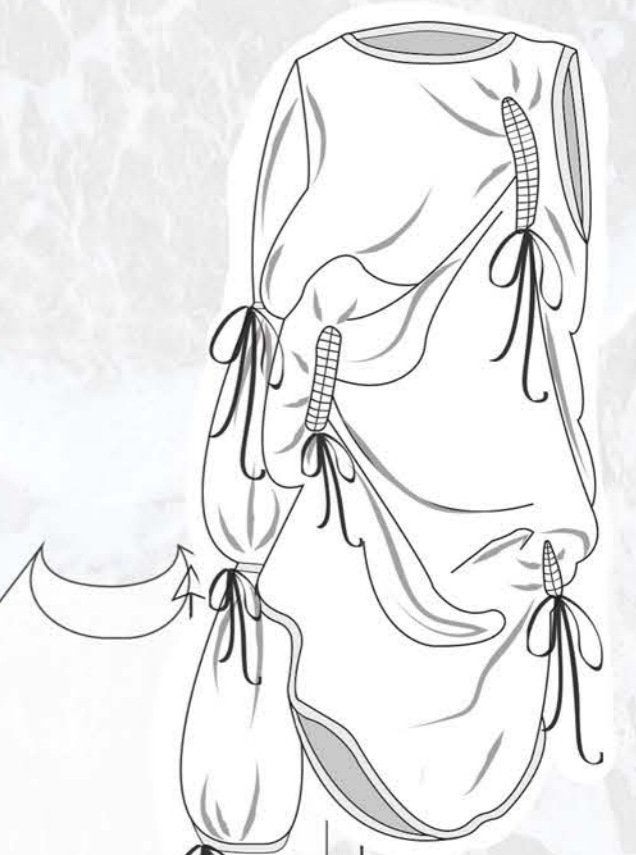
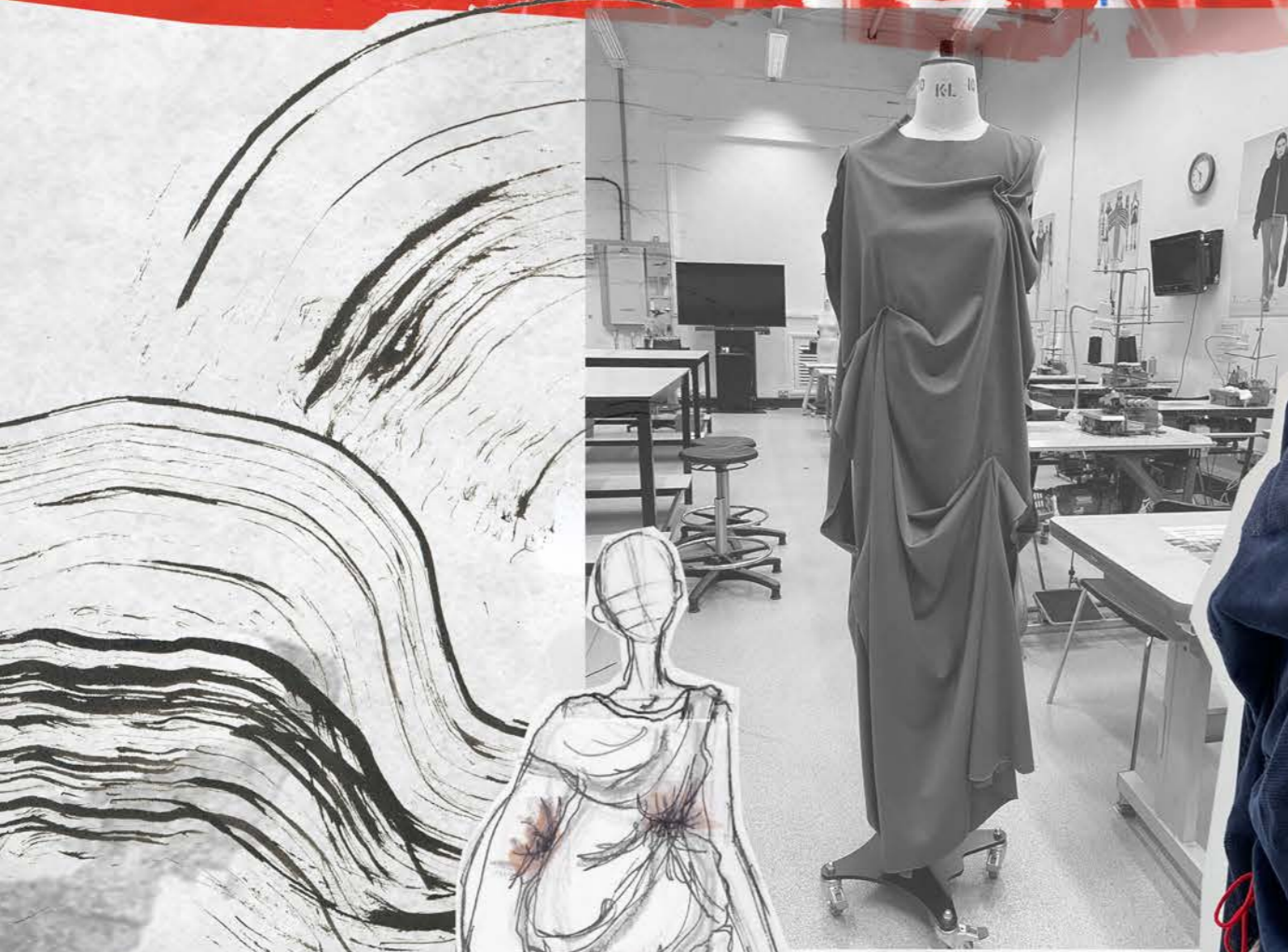
Smalling lengths? one shoulder - fast garment

Netting? seaweed swampy, enmeshed tangled in gobsam



could create texture by rubbing

DRAWSTRING CHANNEL DRESS DEVELOPMENT & PROCESS



60" inches long

51" from armhole

85" long entire length

57" from armhole

12" wide

34" wide

POCKET TRASH GARMENT DEVELOPMENT & PROCESS

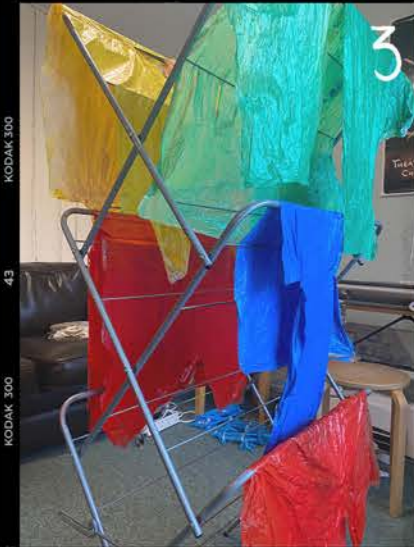


Made out of **monofilament**. The channels between each **pocket** allows a **drawstring** to be inserted and tied to other panels in a myriad of ways.

The pockets are stuffed with **upcycled litter** which has been sourced at the coast, **reducing the waste** found on our shores.



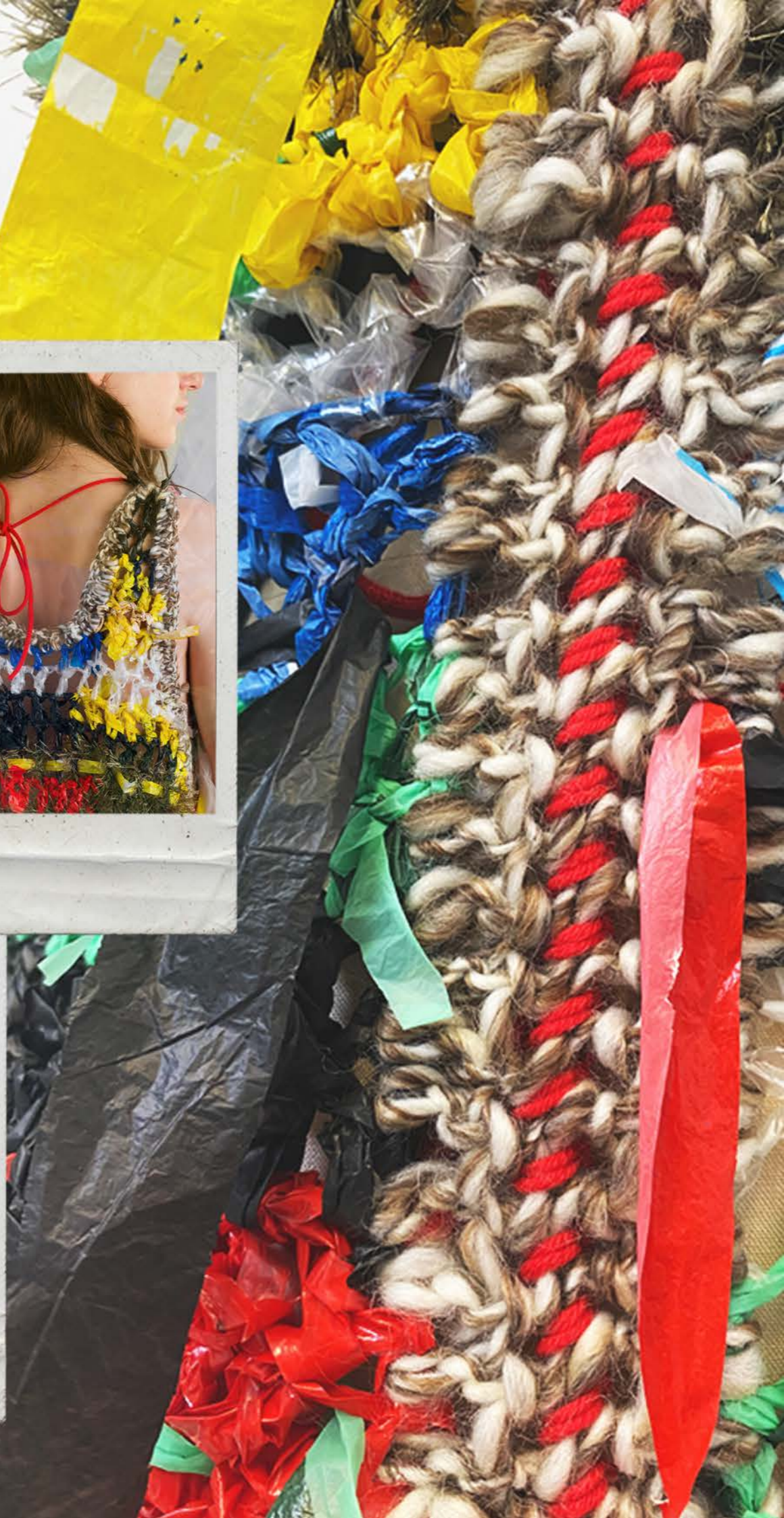
TRASH TOP | & TOTE DEVELOPMENT & PROCESS



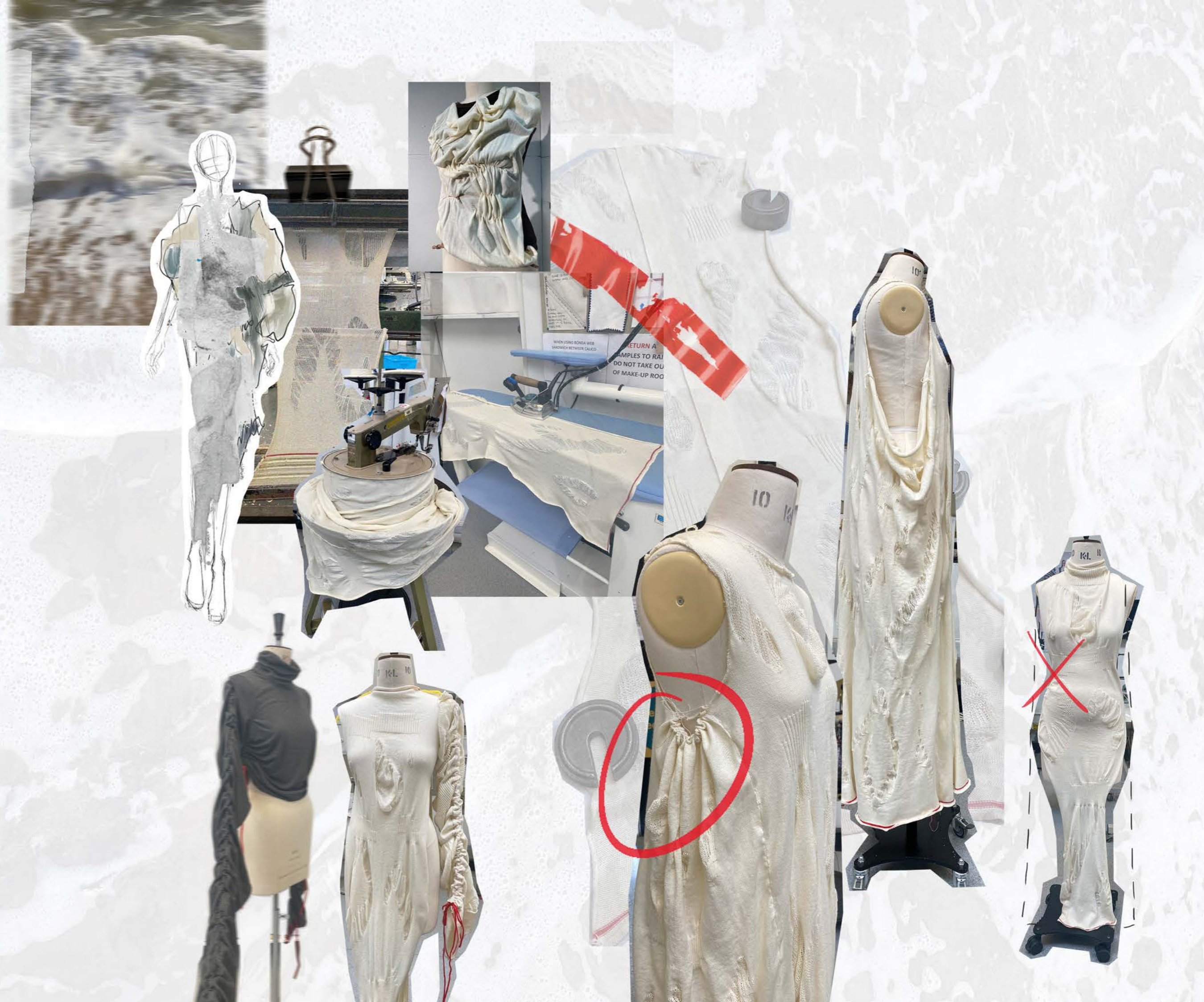
Made with discarded plastic bags which have been washed, painted, and cut into strips. This design attempts to give a second life to litter left on the coast.



Found Materials



DROP STITCH DRESS DEVELOPMENT & PROCESS

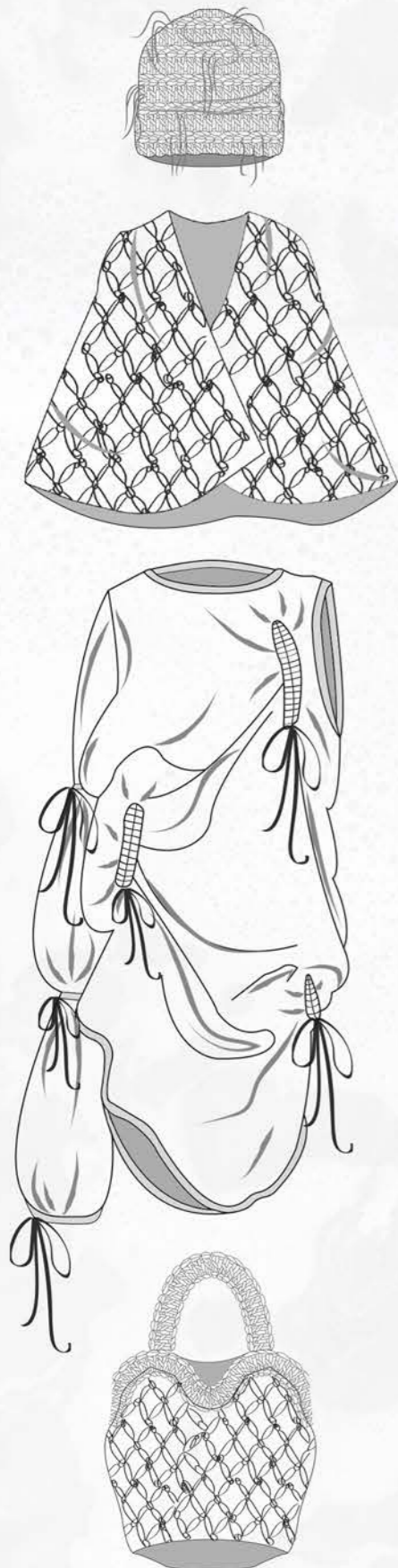


COLLECTION FABRICS

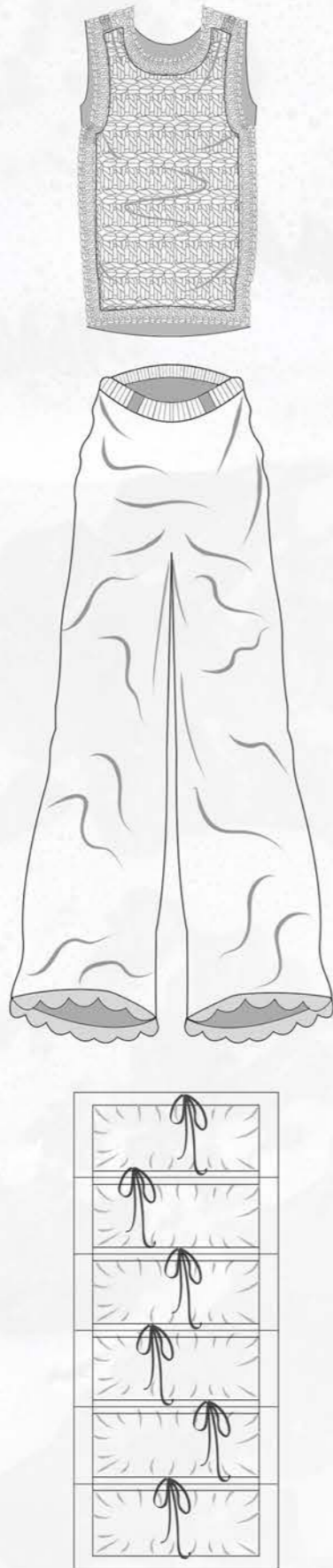


COLLECTION SPECIFICATIONS

OUTFIT ONE



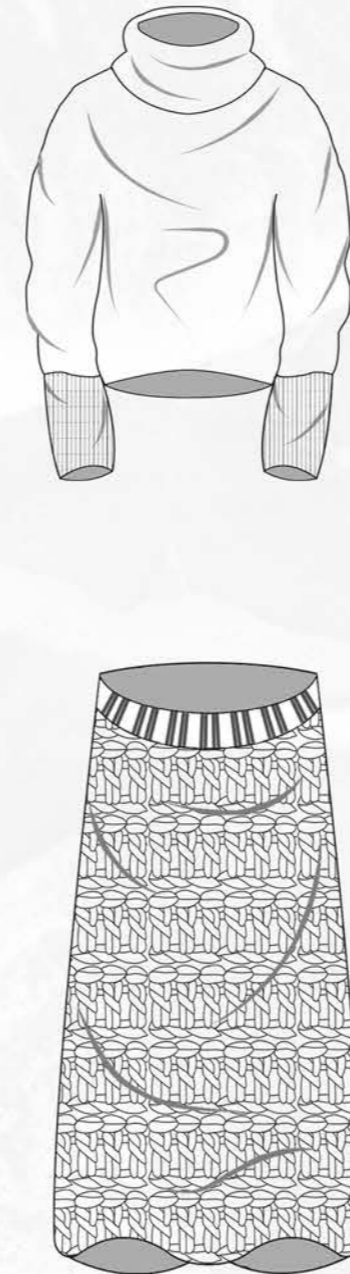
OUTFIT TWO



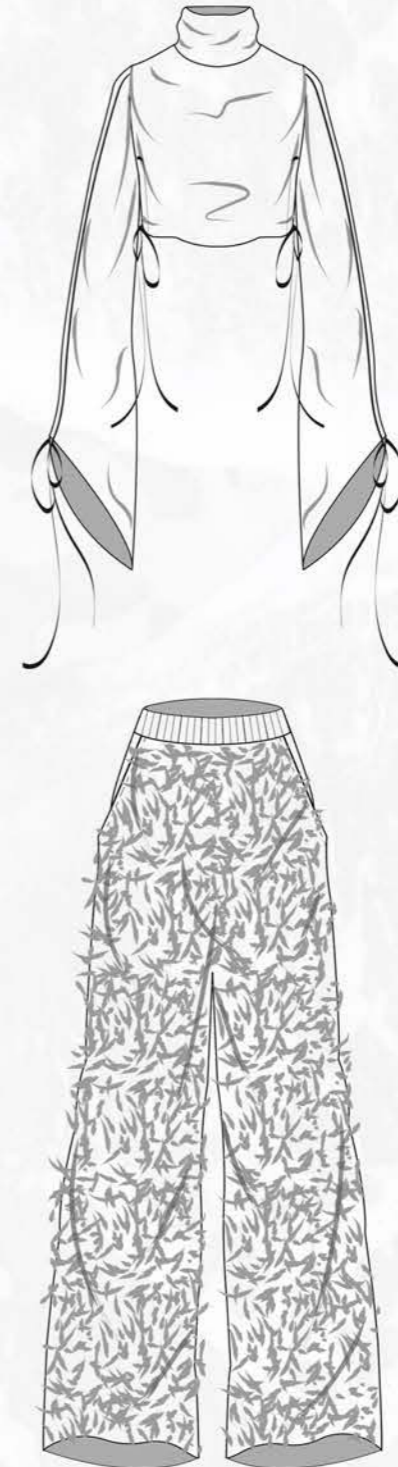
OUTFIT THREE



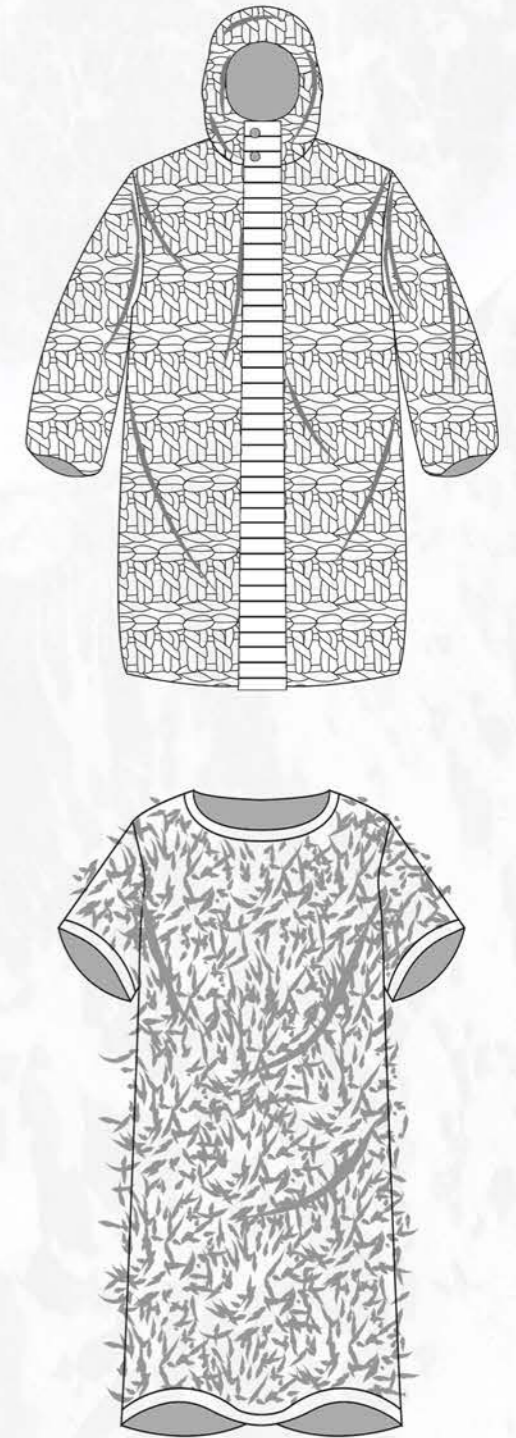
OUTFIT FOUR



OUTFIT FIVE



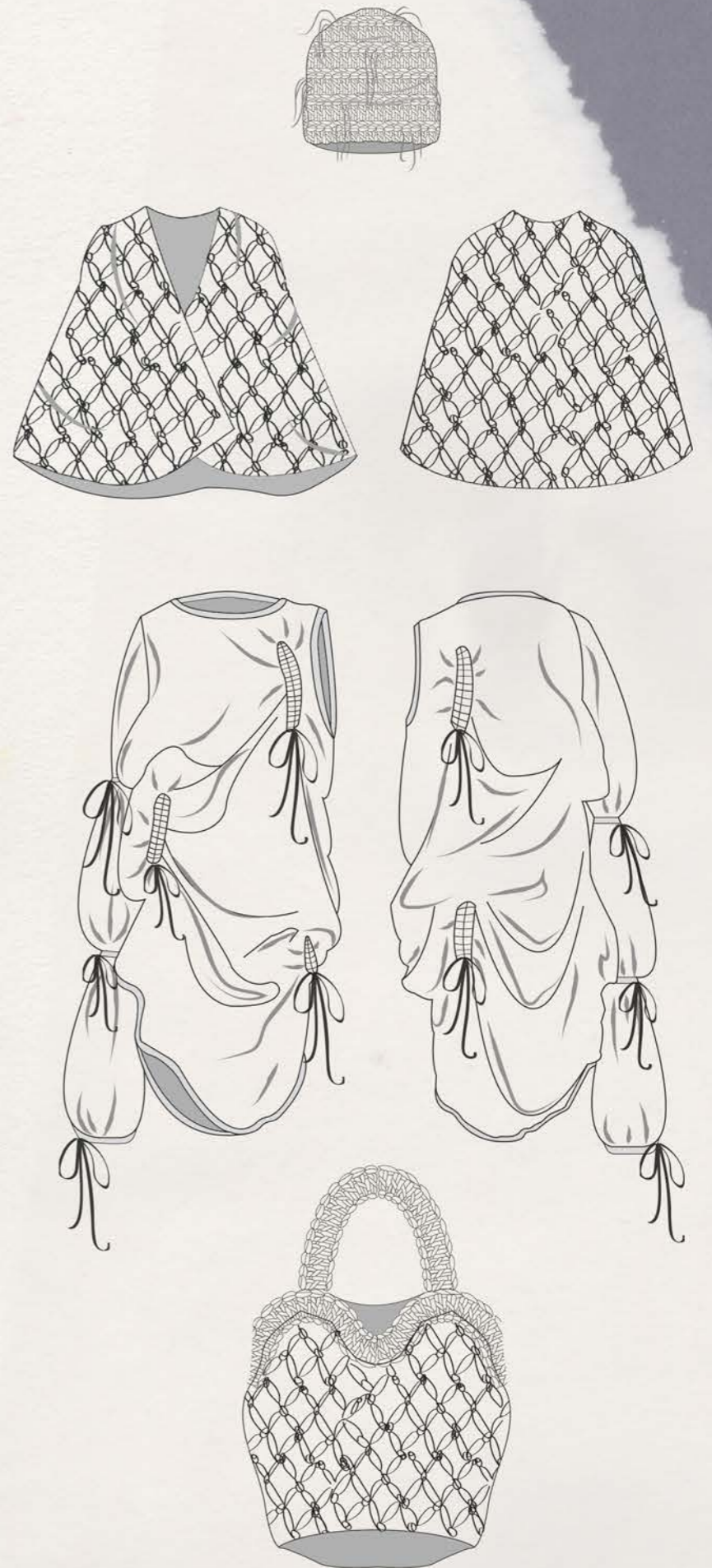
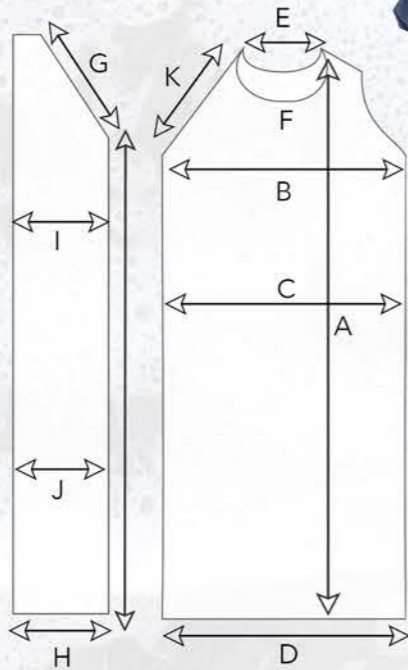
OUTFIT SIX



COLLECTION LINE UP



OUTFIT ONE BREAKDOWN



KNITWEAR SPECIFICATION SHEET

ref	Measurement Point		+ Allowance	Yarn Types
A	Length	215	+2.5cms	2/48NM 70%cotton 20%nylon 10%merino wool
B	Chest Width	86	+3cms	Make - up sequence. <ul style="list-style-type: none"> Cut neck and arm holes out using pattern piece Link side seams using the 10 point linker Link sleeve in arm hole using 10 point linker Knit trims for neck and arm hole on 10gg Dubied Thread drawstrings through all channels and tie
C	Hem Width	86	+ 3cms	
D	Waist	86	+3cms	
E	Back Neck Width	20	half -1cm	
F	Front Neck Drop	9	no S/A	
G	Shoulder Seam	10	+1cm	
H	Cuff Width	30	+1cm	
I	Raglan Sleeve Length	250	+1cm	
J	Raglan Sleeve Width	30	+1cm	
K	Raglan Arm Hole	80	No S/A	
L	Set In Sleeve Width	N/A	-	Trim details 10gg Dubied sandwich trim
M	Set In Sleeve Arm Hole	N/A	-	Linker Point: 10
				Knit Structure & Machine Gauge. Drop stitch Shima Seiki Apex 12gg

