

OMNICIDE

noun. om.ni.cide

The total extinction of the human species as a result of human action.



'The Black Decay' Embroidery - Inspired by my research into decay. These are individual pieces that are **entirely hand beaded** using seed beads, bugles and crystals. **Each piece takes between 8-10 hours to create.**

Some of my own and found images of what I imagine the world to look like if humans left.

THE WORLD WITHOUT US

BOND

HANNAH ELIZABETH BOND

“We are all like the people of Pripyat now. We live our comfortable lives in the shadow of a disaster of our own making. That disaster being bought about by the very things that allow us to live our comfortable lives.”

David Attenborough, A Life on Our Planet (2020)



Chernobyl, situated in Ukraine, is modern-day evidence of **how nature reacts to its surroundings once humans have disappeared entirely**. After nuclear reactor No.4 exploded in 1986, Chernobyl has been left deserted, allowing for nature to reclaim the space. This leaves us to wonder what the rest of the world would look like once we humans are no longer around.

"The Anthropocene Working Group agreed that the Anthropocene... began in the year **1950**, when **The Great Acceleration**, a dramatic increase of human activity affecting the planet, took off" National Geographic



The silhouettes of the 1950's had a strong resemblance to the mushroom clouds caused by nuclear testing at the time.

helped to support garments

worn on top



The Dior 'Bar Suit' is an example of how corsetry would be **incorporated into clothing** to help support a woman's frame and provide that famous 'wasp waist' and 'full hips' look.

THE ANTHROPOCENE EPOCH

"An unofficial unit of geological time, used to describe the most recent time period in the Earth's history **when human activity started to have a significant impact on the planet's climate and ecosystems**" National Geographic

This page shows a collection of **embroidery samples** I created in **response to my research** images. My aim was to **create beaded textures and details** that can then incorporate into my designs to make them look as if they had decayed. Each sample is **created entirely by hand** using **couture embroidery techniques**.



Artworks which inspired my embroidery

'Dripping Decay' Embroidery - created using french knots, seed beads, crystals and beaded fringes

Aiming to replicate the cracking/decaying walls seen in my primary research

'Decayed lace' - created using free-hand machine embroidery

'Mouldy Embroidery' - created using hundreds of french knots and finished with beads

'Black decay' Embroidery - individual pieces completely encrusted with beads, bugs and crystals. Taking between 3-10 hours to complete each one

EMBROIDERY DEVELOPMENT



Pantone®
18-3912 TCX
Stone

Pantone®
19-3922 TCX
Darkened Sky

Pantone®
16-4408 TCX
Ash

Pantone®
19-3911 TCX
Black Beauty

Pantone®
19-0309 TCX
Ivy

Pantone®
17-6323 TCX
Mould

COLOUR PALETTE



Inspired by 1950's silhouettes, I used items such as my own leather blazer and a corset-style top to form a base. I then used different materials to drape on top and manipulated the fabric in different ways...

DRAPING ON THE STAND TO EXPLORE SILHOUETTE



'wasp waist' and full hips

Initial toile to get an idea of shape

Toile 4 - incorporated lace into the waistline of jacket to give it that 'bustier' look.

I preferred a classical shape

lapel shape ideas

inserted cup into jacket

look

Initial lace panel idea

'V' shape is more flattering

remove this seam

Old design

New design

I wanted a seamless look in the front of the jacket - I tried an inverted corset idea

R didn't sit right on bust point

make wider

THE BUSTIER BLAZER

The initial development stages of my tailored jacket piece...



'The Decay Embroidery' - used on clasp.

150s Navy Wool fabric - High quality + luxurious

Dusty Blue Duchess Satin - used on facings.

Black crepe used on train.

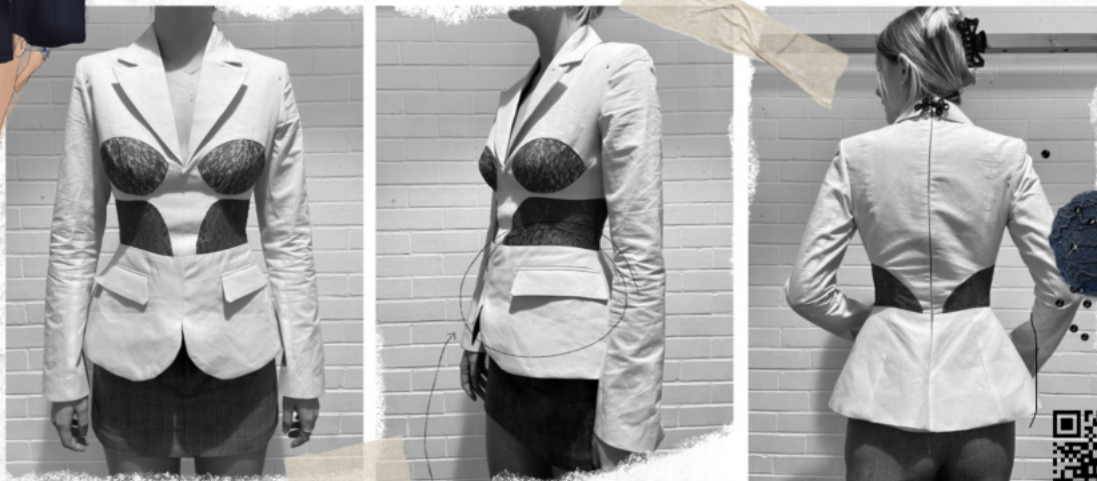
cue in half to get jacket on/off.

Small 'Black decay' embroidered clasp to cover top of zip.

Invisible zip down back.

50's WOOL

The 'Decayed' Lace - Black guipure lace fabric



Toile 9 - final toile

Double welt flap pockets.

Self-covered embroidered buttons on vents

Beaded detail hand-embroidered on top of lace cups.

SCAN FOR PROCESS VIDEO

LATER DEVELOPMENT STAGES...

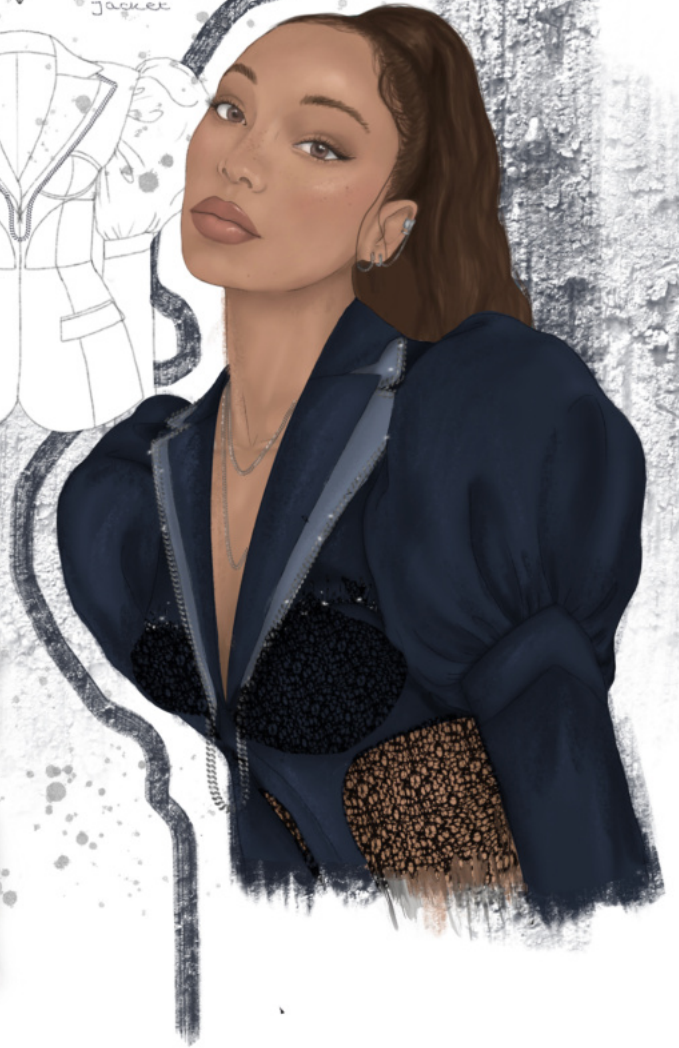
THE EMBROIDERED BOLERO JACKET



The Bolero Jacket
Creates a customise-
able element. It can
be an added extra to
'dress up' the
jacket



↳ a chain
fastening - adds to
the darker themes of my concept.



THE LACE PANELLED SKIRT AND TRAIN DEVELOPMENT

Scan to watch video of Outfit Development process

Black Decay embroidery

The Dripping Decay embroidery

Decayed lace panels mirrors the base of Jacket

Embroidered Crisp Fastening

fully lined to add flash of colour

full length train - Draped on the stand into the waistband.

Development of outfit 1 - trying to style a look

THE EMBROIDERED BUSTIER DRESS



Initial development idea.

Boned bodice for zip

BOND

Sheer lace cups looked more delicate and refined.

80 Black Decay embroidery applied onto bustier

x 8 for bodice

layers of silk draped into waistband - zero waste process.

Asymmetric hem - more flattering.

100% black silk fabric with texture

100% Black silk for skirt

Black decay lace

Chunky zip closure in back

I first started with foam padded cups but these looked too bulky alongside the chunky embroidery

THE LONG SLEEVE BOLERO JACKET



THE WORLD WITHOUT US

A/W 23 COUTURE COLLECTION LINE UP



BOND
HANNAH ELIZABETH BOND



FINAL LOOKS



All Photography by Josh Upton
Modelled by Beatrice Hill (above left) and Ella Lawrence (above right)



SCAN FOR PHOTOSHOOT FILM