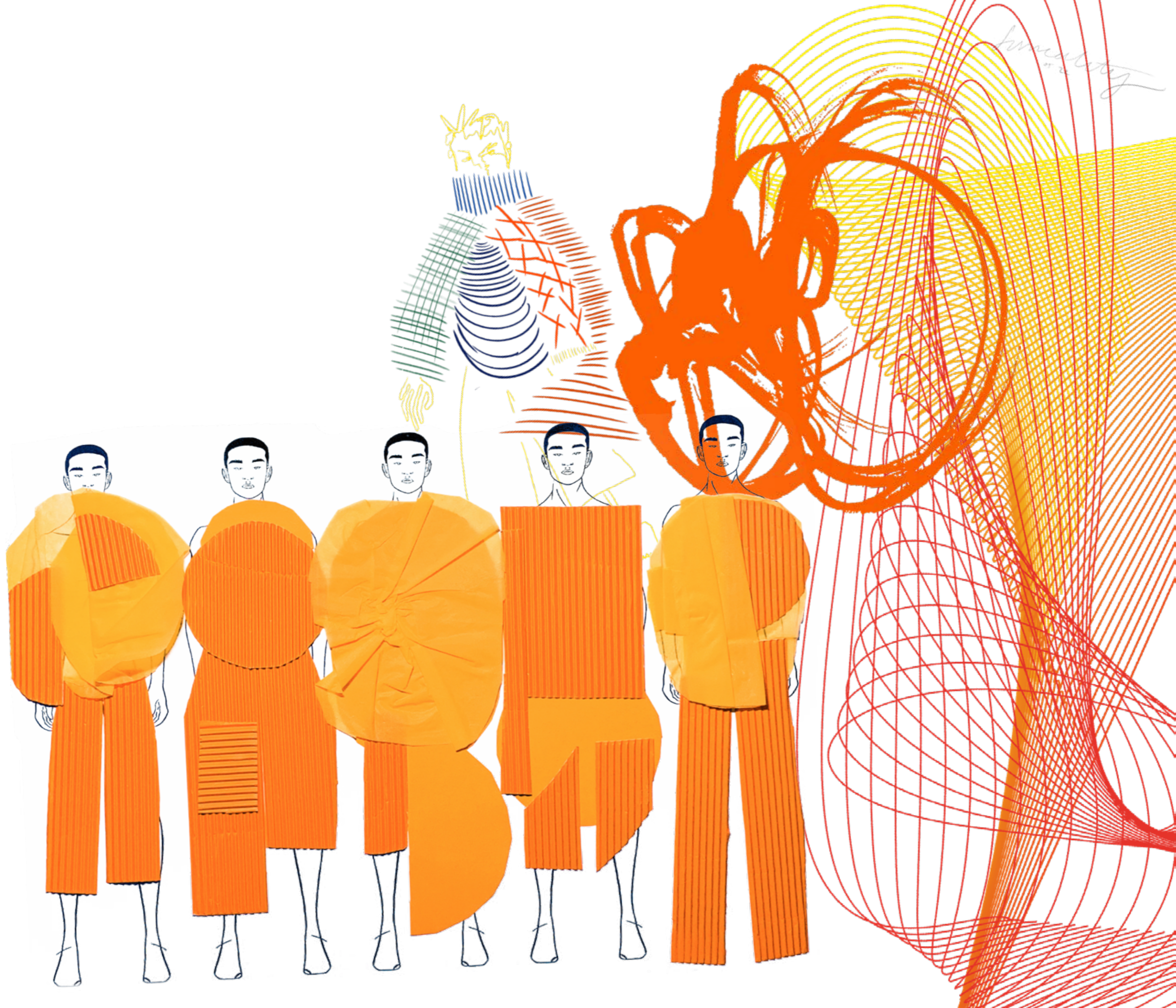


ALEX BLYTHE
FASHION KNITWEAR & KNITTED TEXTILES



DISTORT ILLUSION ABSTRACT EXAGGERATE BIZARRE LAYER

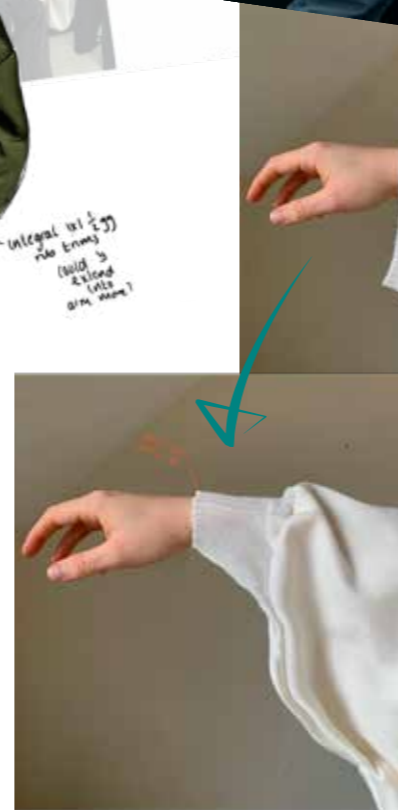




USHER
POSSIBLE
SLEEVE

Drop
Shoulder

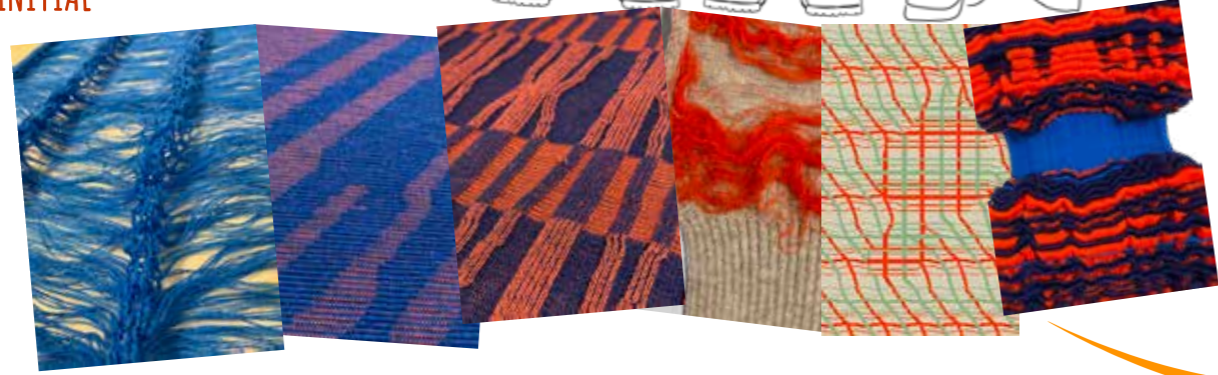
Integral ribbing
ribbing
(build up
ribbing into
arm holes)



M. Mulotaj



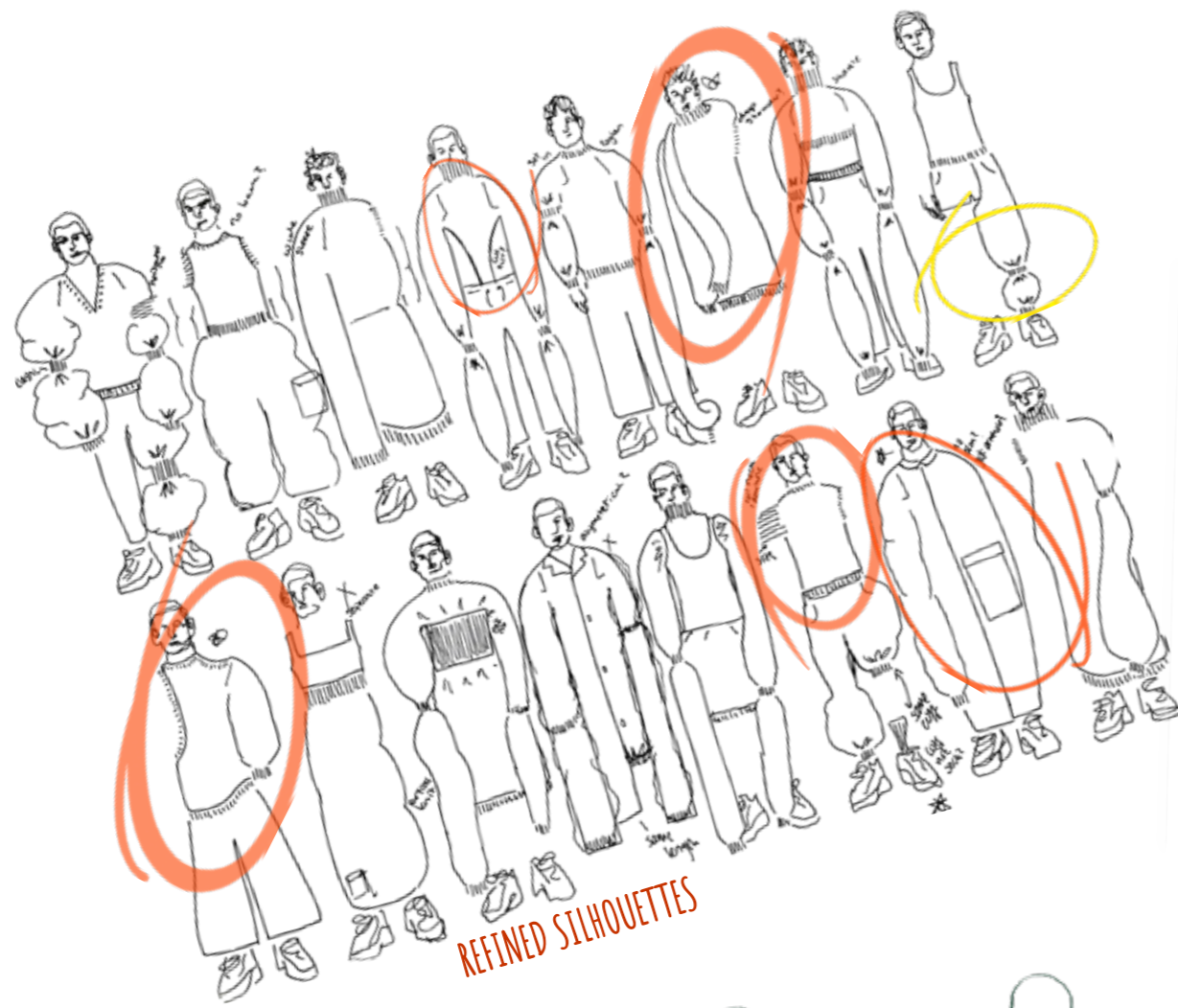
INITIAL



QUICKFIRE SILHOUETTE DEVELOPMENT

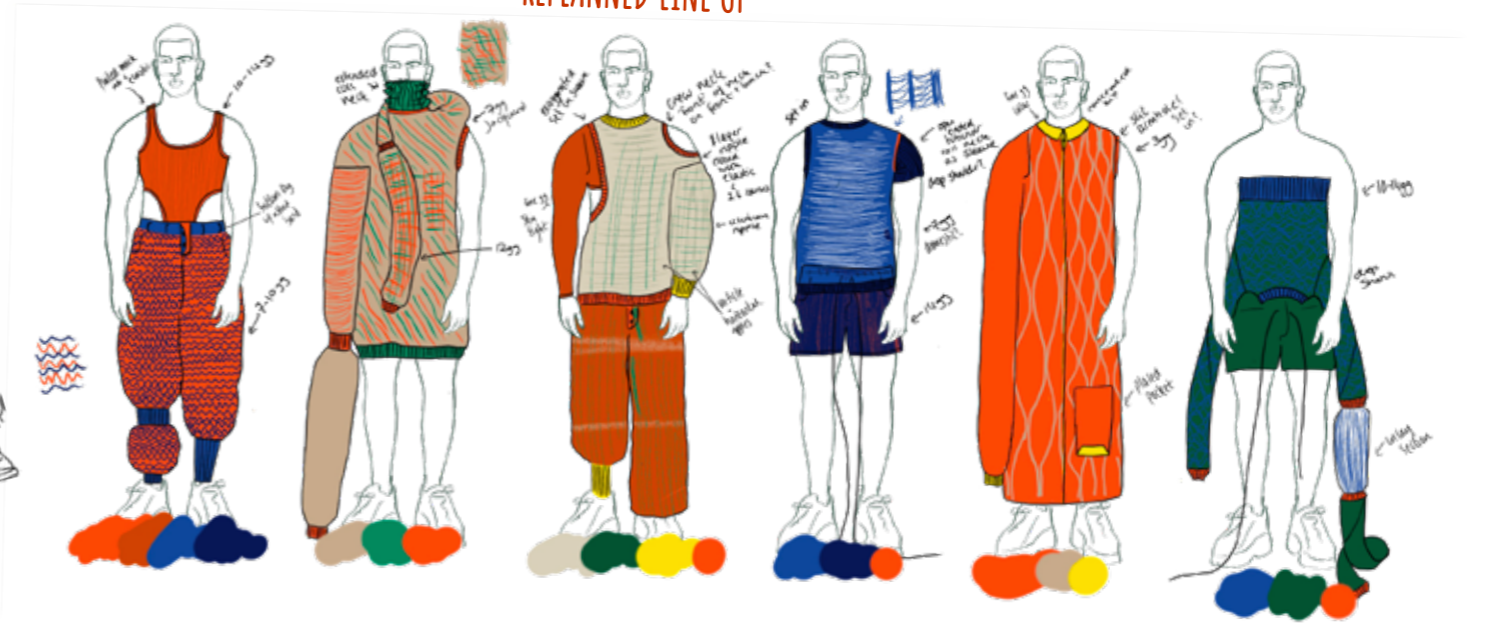


DEVELOPED SILHOUETTES



REFINED SILHOUETTES

REPLANNED LINE UP



REBALANCED LINE UP CONSIDERING YARN WEIGHT + COLOUR



FINAL LINE UP PLAN





SAMPLE LAYERING

formality
11 22



quantity



gap for hand



smaller armhole

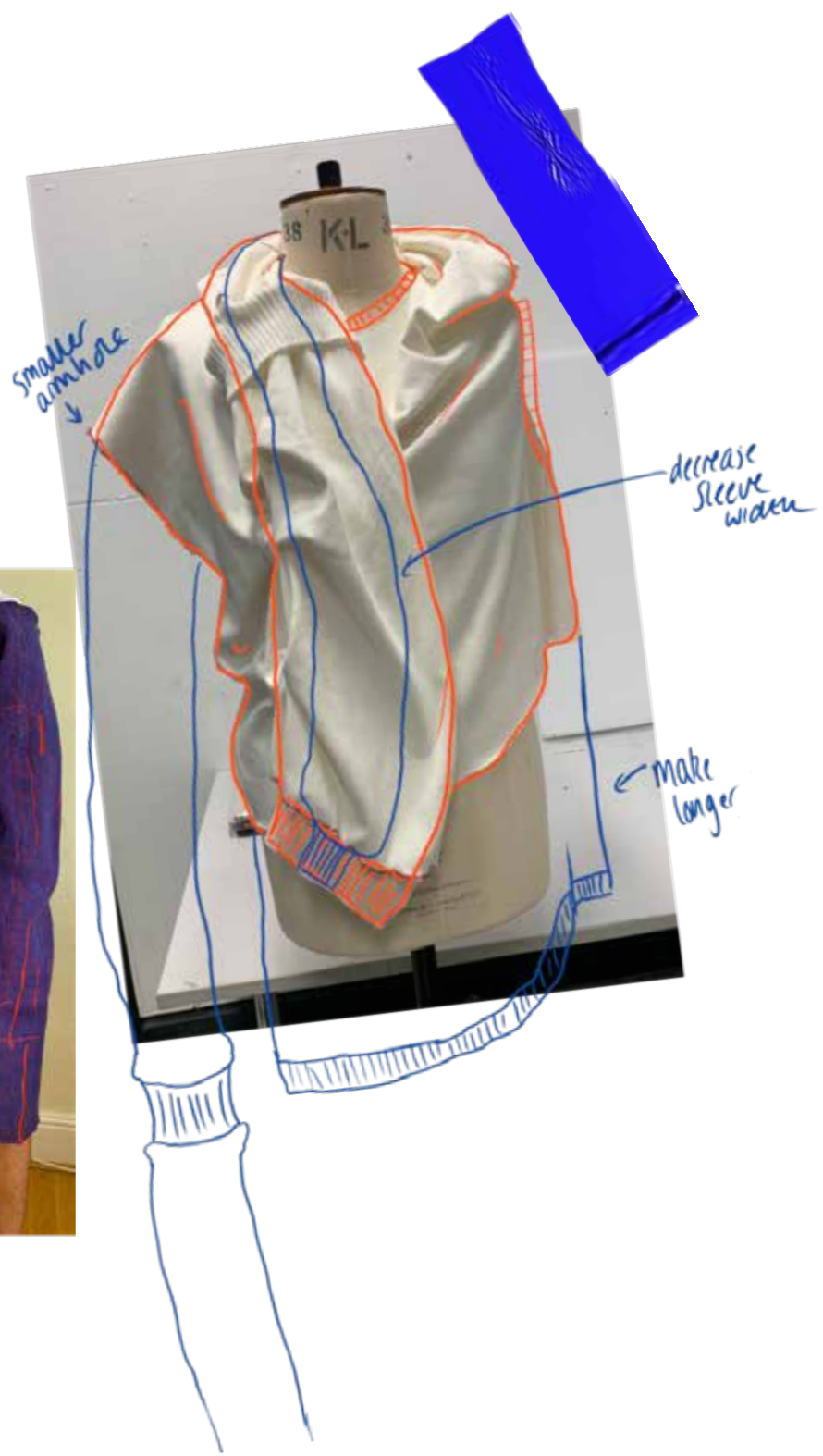
decrease sleeve width

make longer



jumper is going to bunch up

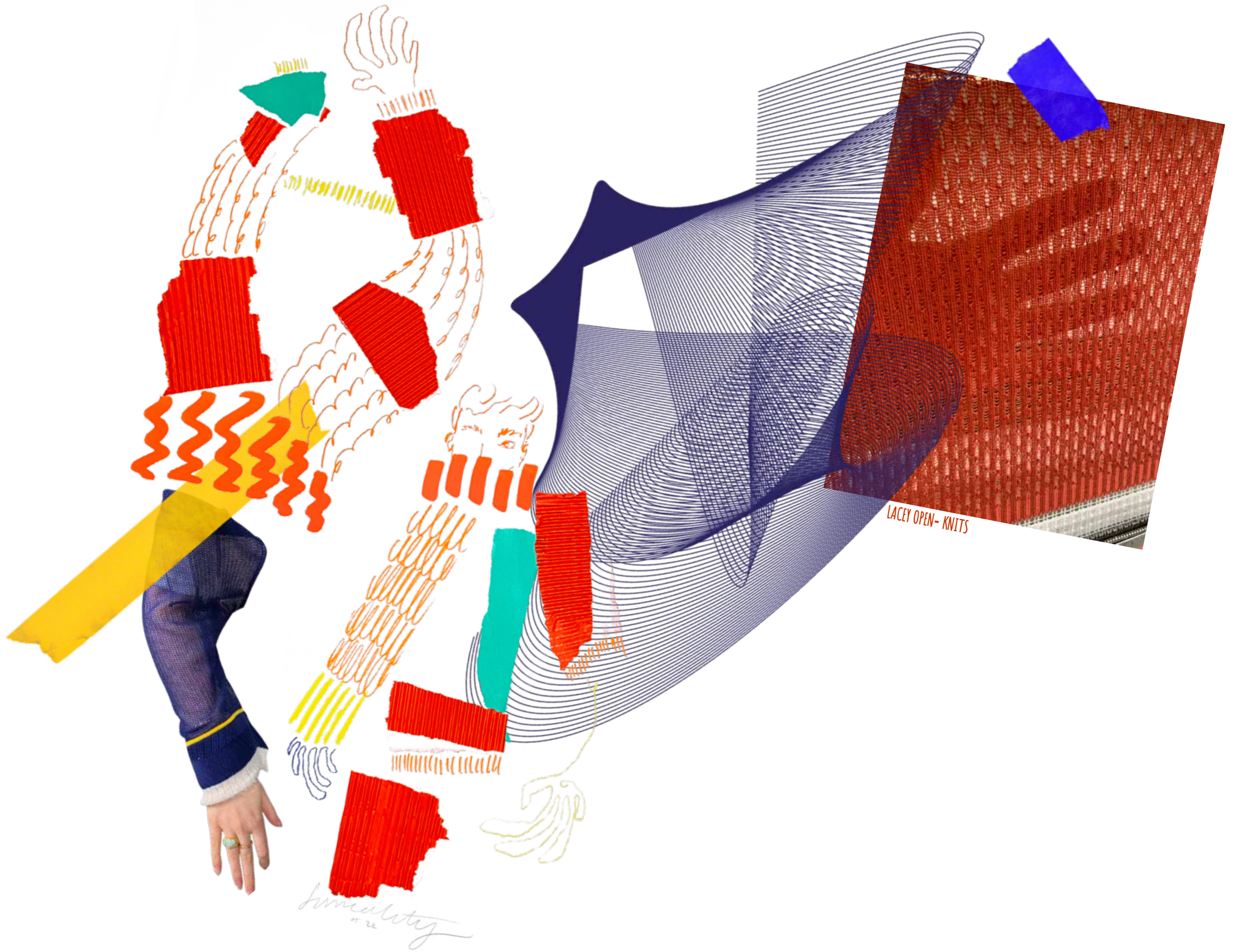
needs trousers





quality
11 22





too stretched

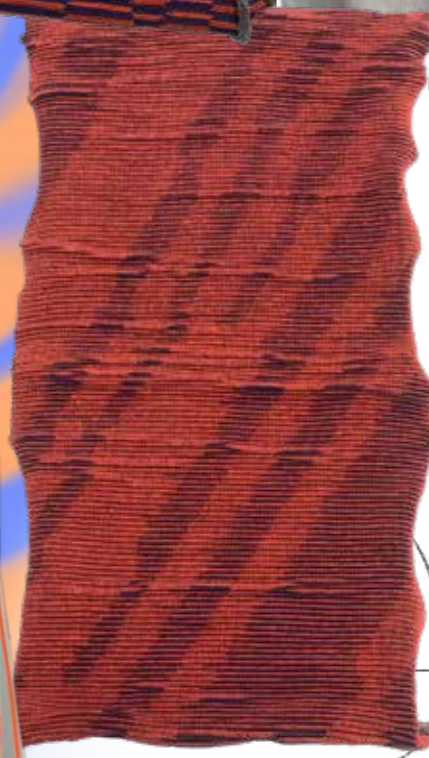
functional



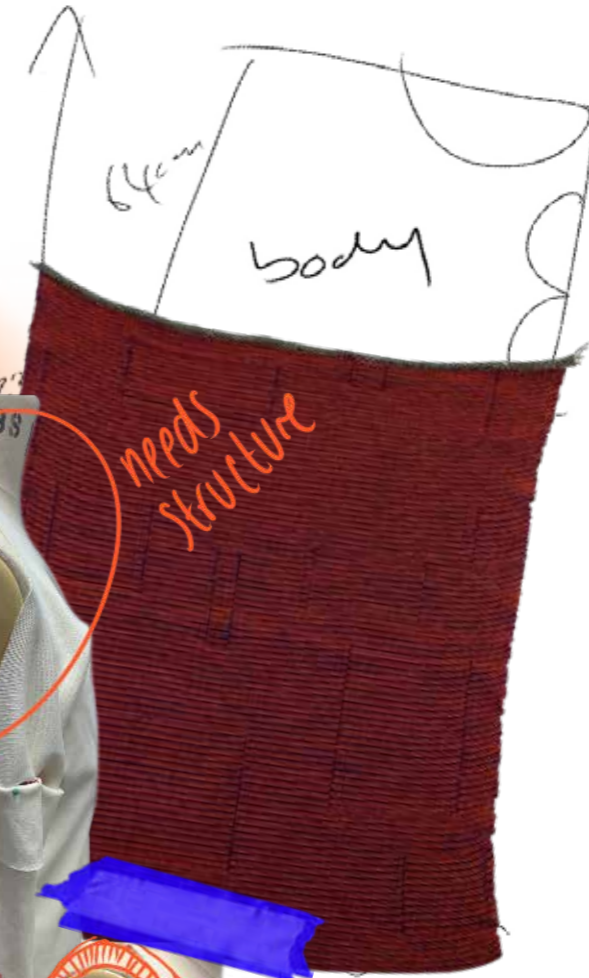
smooth out



tension



needs structure



reduce sleeve length

body

$$71.5 \times 7.67 = 550$$

$$64 \times 4.33 = 278$$

$$\text{pattern} - (278 \times 6) \div 3 = 556 \text{ per p}$$

sleeve

$$26 \times 7.67 = 200 \text{ needed}$$

$$50 \times 4.33 = 217 \text{ appl}$$

$$\text{pattern} - (217 \times 6) \div 3 = 434 \text{ per pattern}$$





GARMENT SPECIFICATION SHEET

DATE: 28/5/22

VERSION: 1

CATEGORY: MENSWEAR

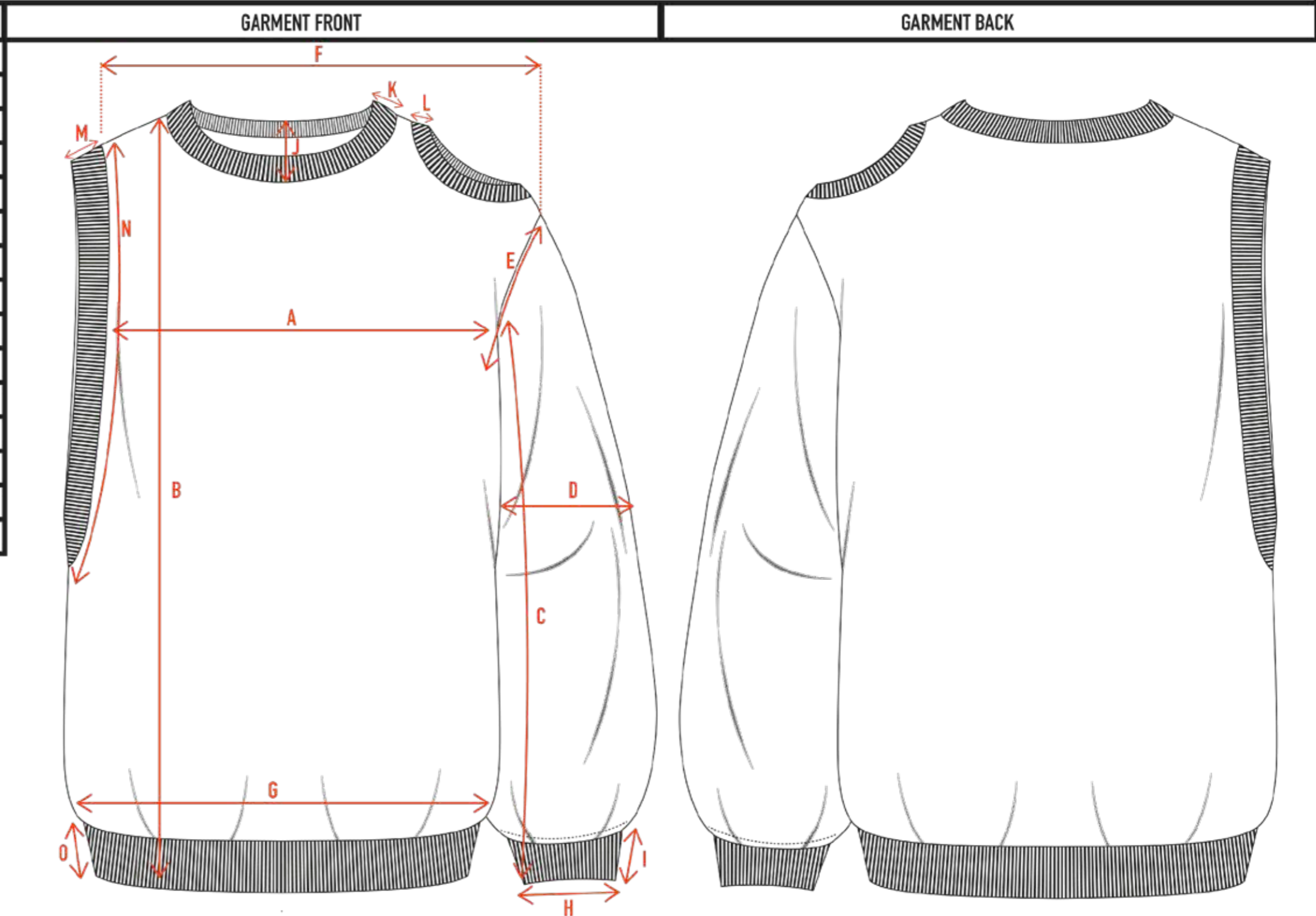
SIZE: MEDIUM

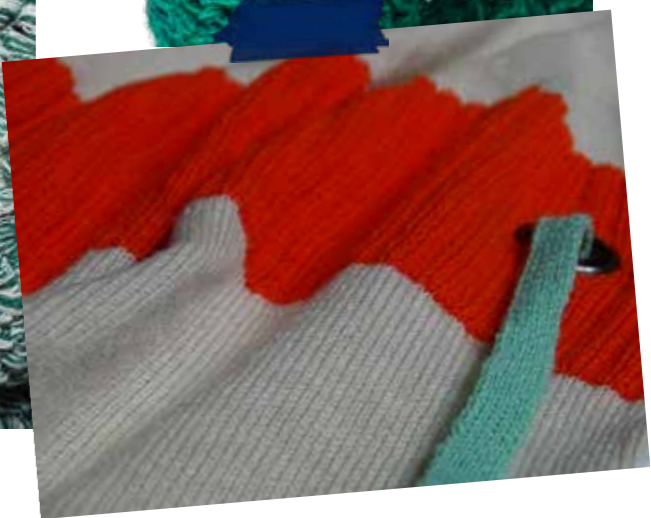
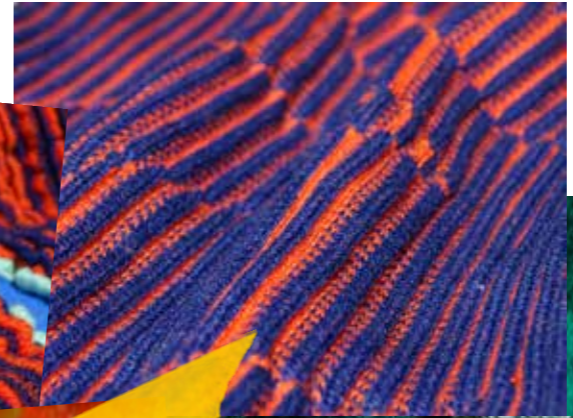
SEASON: AW22

DESIGNER: ALEX BLYTHE

GARMENT DESCRIPTION: JUMPER WITH EXAGGERATED SET IN ARMHOLE & DROP SHOULDER SLEEVE

REF.	MEASUREMENT POINT	CMs
A	CHEST WIDTH FLAT	46.00
B	FRONT BODY LENGTH inc. RIB	77.00
C	SLEEVE LENGTH inc. RIB	55.00
D	SLEEVE WIDEST	26.00
E	ARMHOLE	26.00
F	TOP OF SHOULDER seam to seam	45.00
G	WIDTH ACROSS TOP OF BASQUE	64.00
H	CUFF WIDTH	15.50
I	CUFF DEPTH	5.00
J	FRONT NECK DROP	11.00
K	NECK RIB DEPTH	5.00
L	CUT OUT RIB DEPTH	4.00
M	ARMHOLE RIB DEPTH	5.00
N	ARMHOLE	50.00
O	WAIST RIB DEPTH	5.00





homelot

homelot



Imaginity
11.22