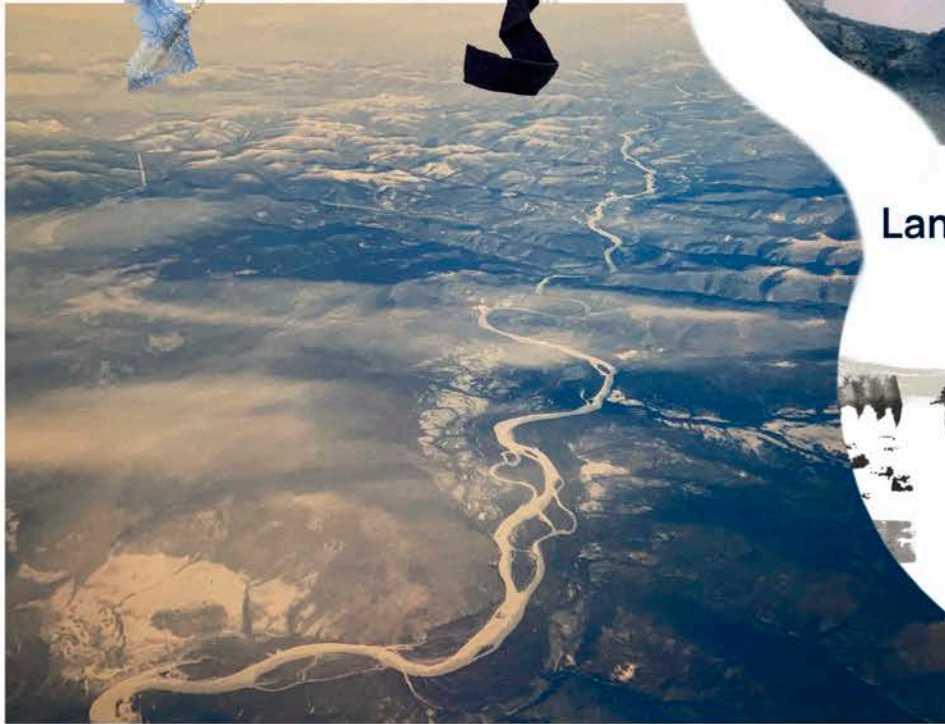


Portfolio

Fashion Knitwear and Knitted Textile

Nottingham Trent University

Chung-Lin Chen N0808606



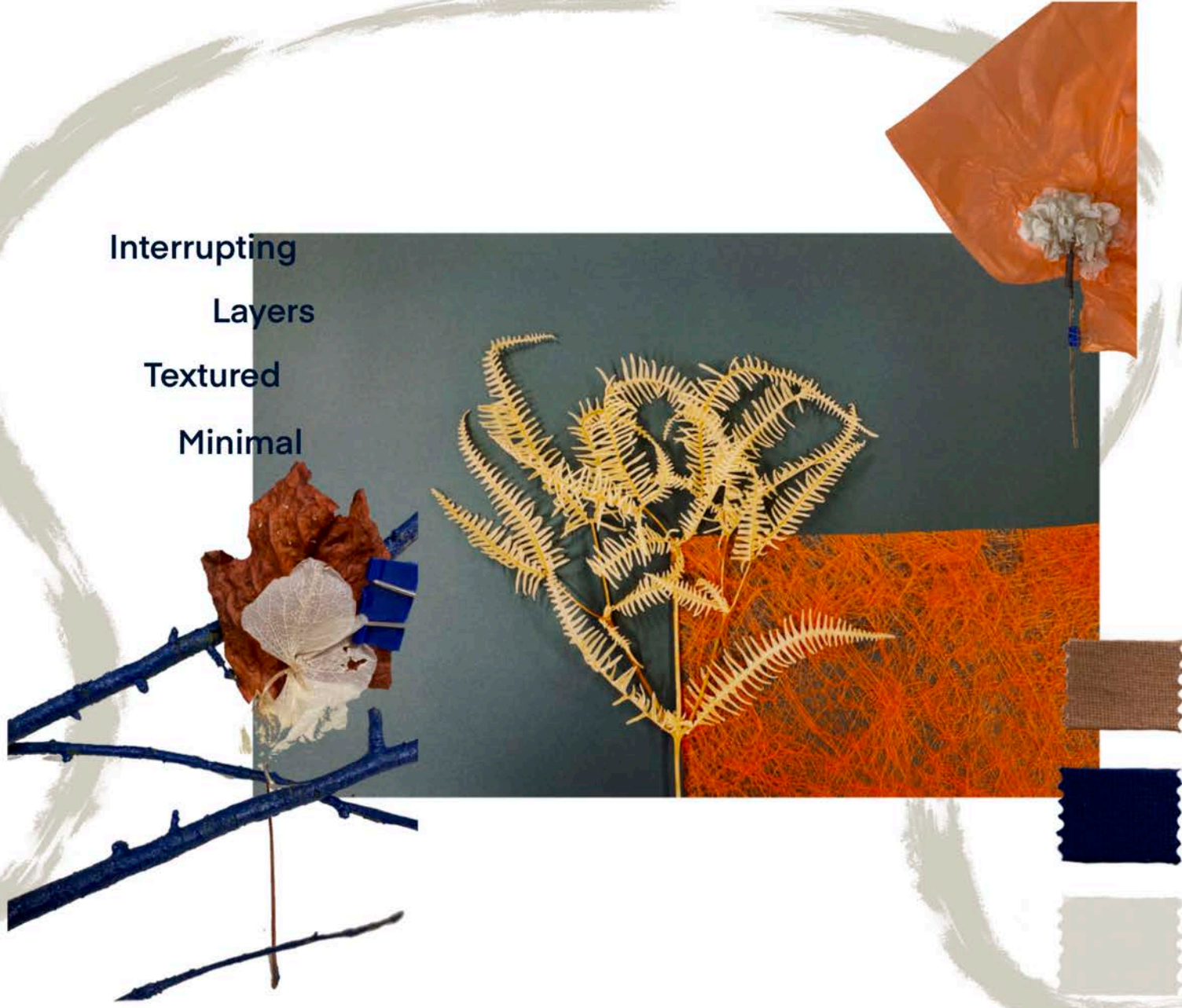
Landscape

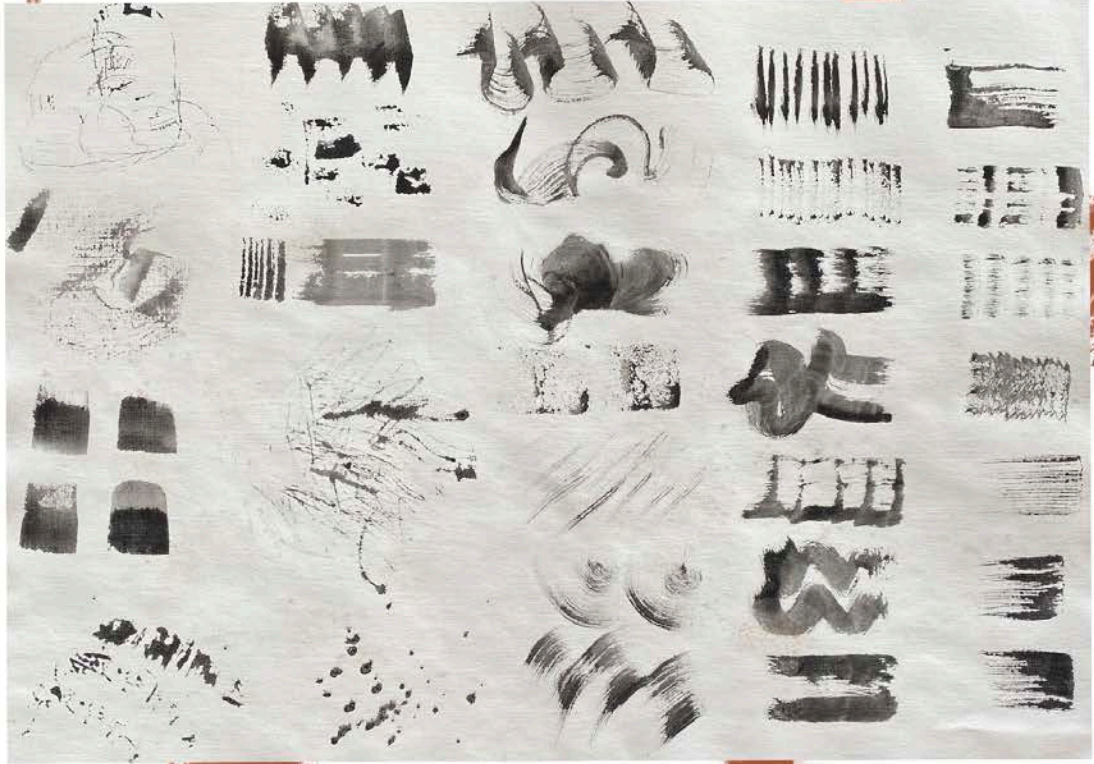
Structure

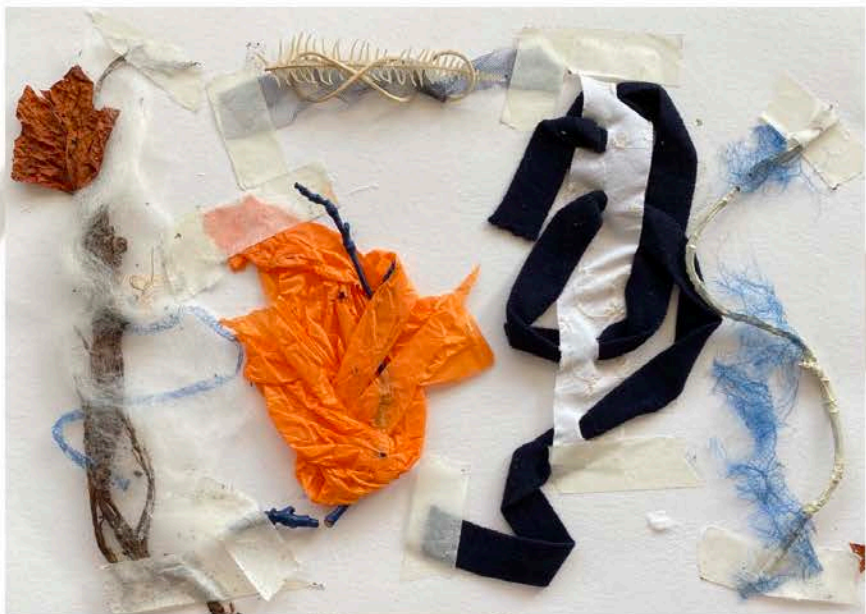
Bendy



Interrupting
Layers
Textured
Minimal









Shirring or gathering



Shirring on machine/needle



A bit too empty, maybe add a shoulder piece?



Something like this?



Too see through!!
Maybe another layer / garment underneath?
3 colour ways



This colour works the best!
look luxury.



shoulder piece toile.

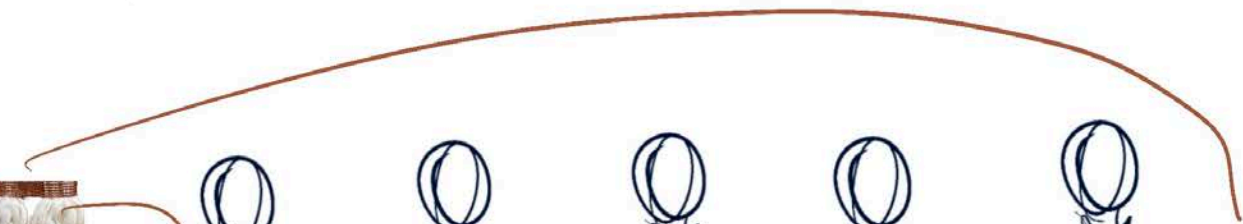
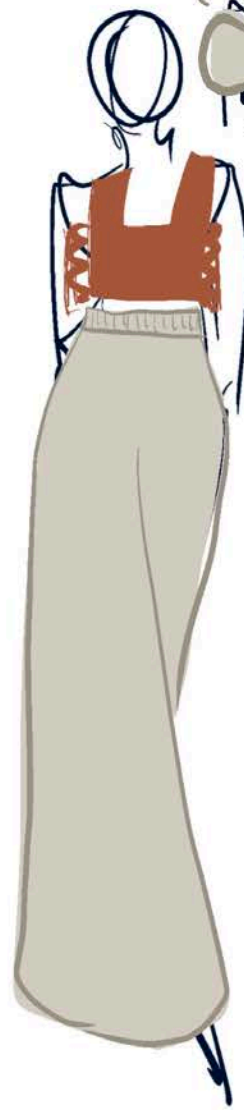


shoulder piece final outcome.



Final outcome, on fitting models.

beauty like texture
twisted?





Toile.



Matching the pattern.



Front & Back panel are joined, try to reduce as much waste, low waste pattern cutting.



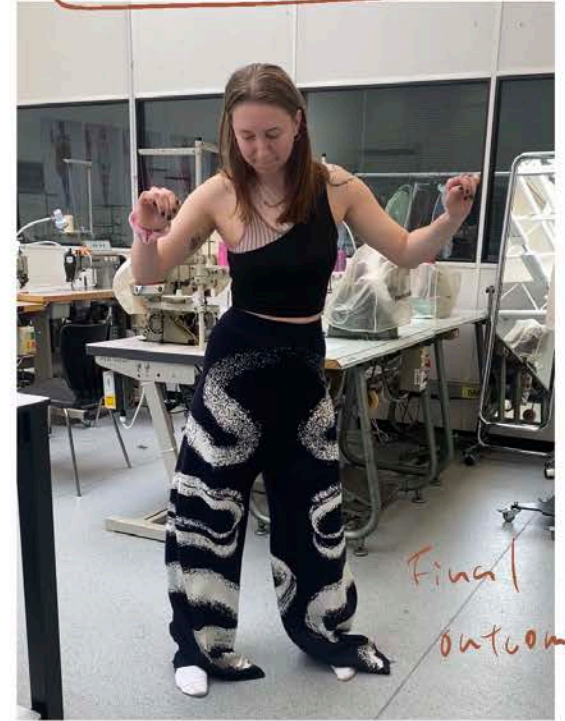
Adding elastic in the waist band, to hold the trousers better.



Front?
Back?

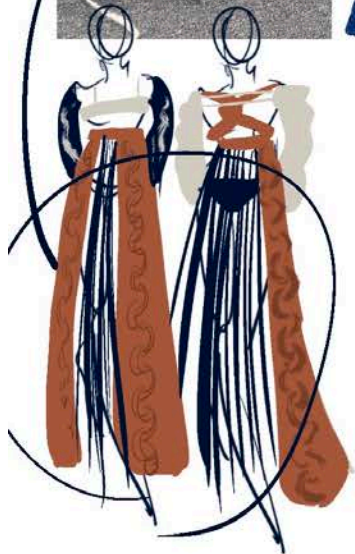
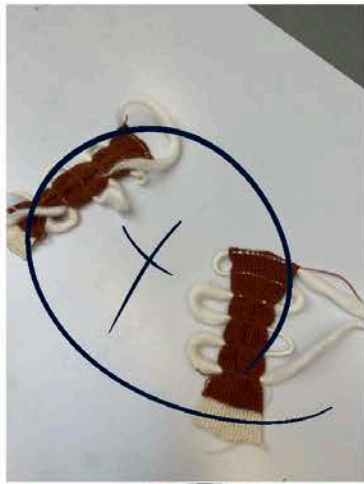


Front?
Back



Final outcome!





link on to the waistband and hide inside it.



planned, looks good!



Final outcome.

before wash, need to press really hard.

Full of movement, it is going to be interesting while model is walking. moving line!!!







