

CONCEPT AFRICAN SCARIFICATION

BEATIFICATION



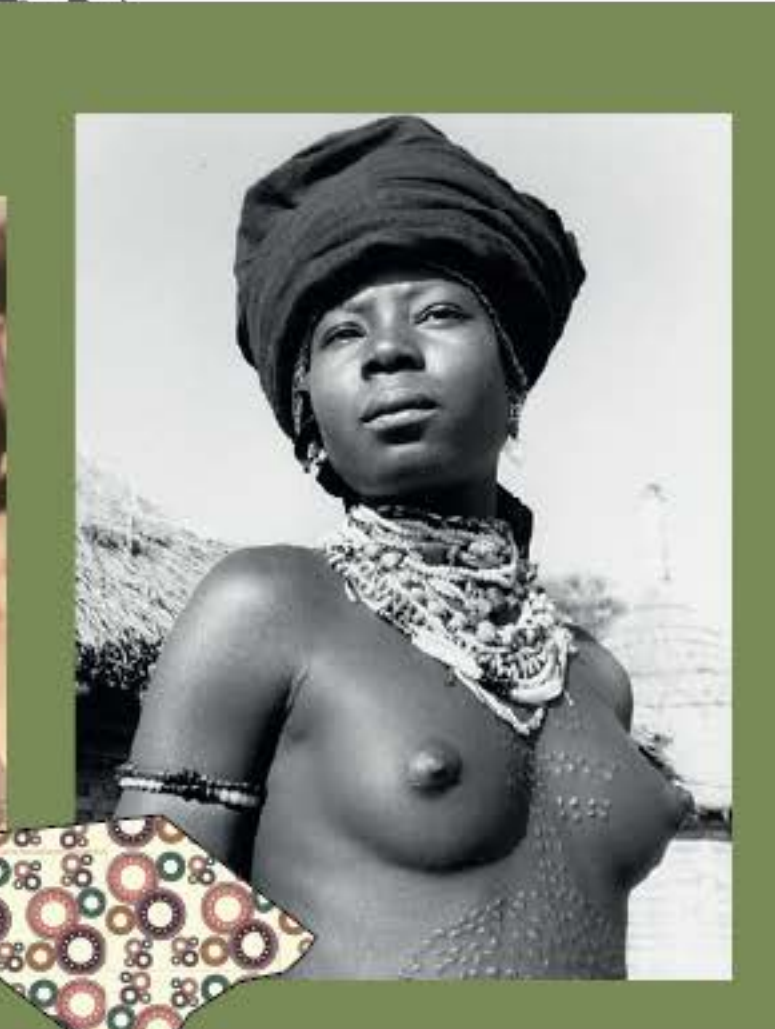
Tribal marks are mostly given to people at a very young age most especially when they are babies. This is because at that age, the child doesn't have a say on decisions to giving him/her tribal marks.



Scarification is usually carried out by special trained experts, recognized for their skills, who may be either men or woman. The technique varies very little: small cuts are made with razors or thorns, and wounds are covered with charcoals. When they have healed, raised scars are visible, sometimes showing the blue-black colouring of the incised lines.

CONCEPT AFRICAN SCARIFICATION

MEDICAL PURPOSES



THE SCARS ON THE BACK OF THIS NUBA WOMAN FROM THE SUDAN SHOWS THAT SHE HAS HAD AT LEAST ONE CHILD.

African Tribal marks are scarification's with specific patterns drawn on the faces of individuals for the purpose of 'identification, protection and beautification'. The custom is an ancient African culture and are usually inscribed on the body by burning or cutting of the skin. Each ethnic group in Africa have their own different inscription patterns which appears in different sizes and shapes at different locations within the face or body.

IDENTIFICATION OF FAMILY, TRIBE

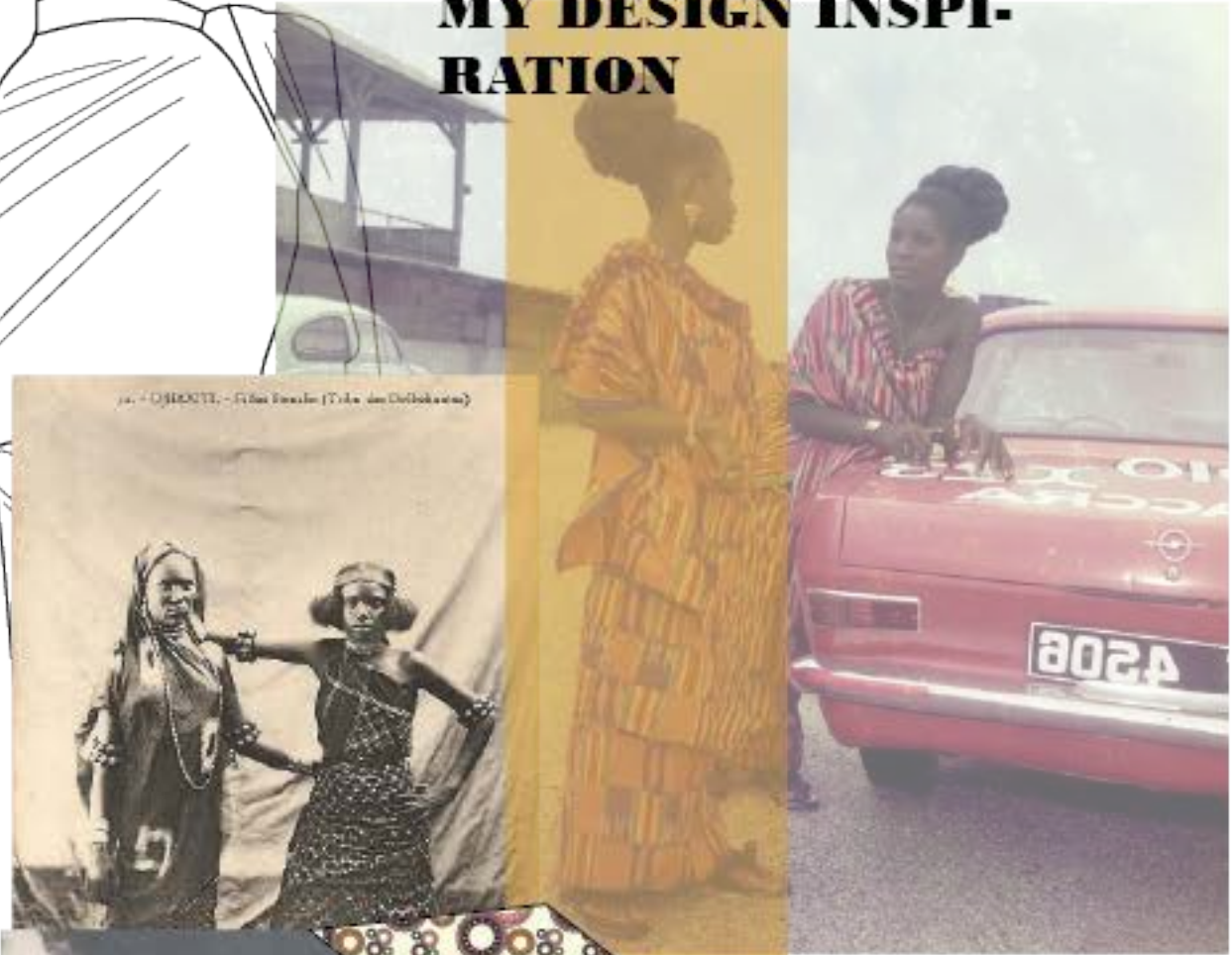


CORSET

READY TO WEAR SS 2022 COLLECTION
BY FEIMATA DAVIS



MY DESIGN INSPIRATION



CONCEPT AFRICAN SCARIFICATION

THIS IS THE AFRICAN MASK, ITS VERY UNIQUE AND COLOURFUL. THE REASON WHY I CHOOSE THIS COLOUR IS BECAUSE THEY ARE BRILLIANT.



COLOUR PALLETS

This colour were inspired by the kente fabric print, the reason why I chose this colour is because of its bright and bold and the significant meaning behind them and what they stands for. Like for example; the red stand for blood, political passion and strength. Blue is for peace, love and harmony. Yellow is for wealth and royalty. Green is for growth, harvest and renewal. White is for purity, cleansing and festive occasions. Purple is for mother earth, healing and protection from evil.



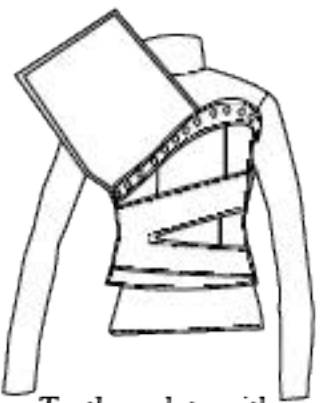
PRINT DEVELOPMENT

My printing was inspired by African SCARIFICATION marking, this marking has significant meaning to me and my culture, so I decided to turn this marking into a print for my collection...

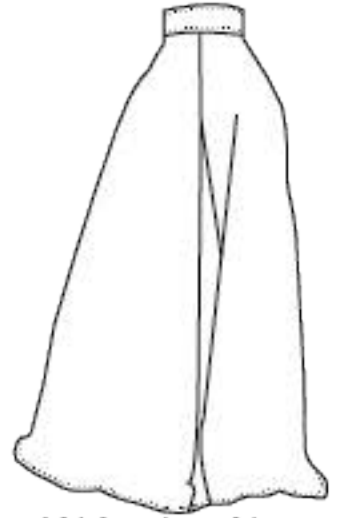




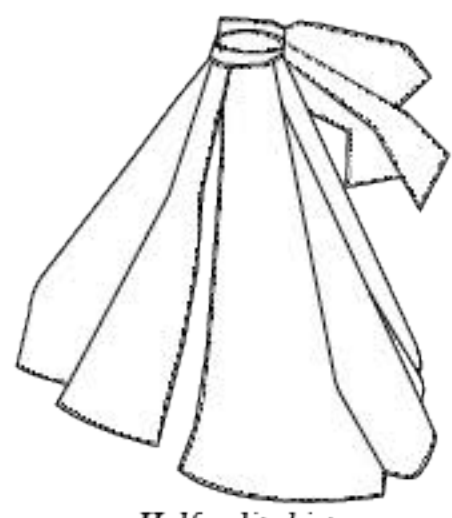
I worked collage with images I researched for the design of my first outfit, the combination of silhouette emphasizing the traditional African clothing and their over the top layers of fabrics and it was interesting to develop a design silhouette from it. My idea was to use the Pele, Iro to create a new silhouette that has never being seen out there...



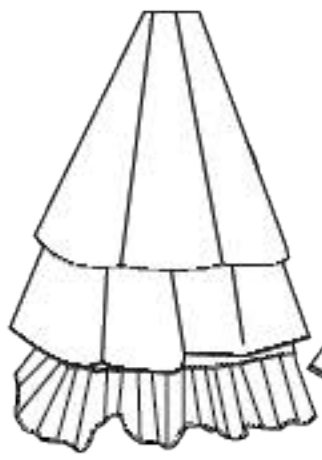
Turtle neck to with corset and shawl on one shoulder



A high waist g skirt



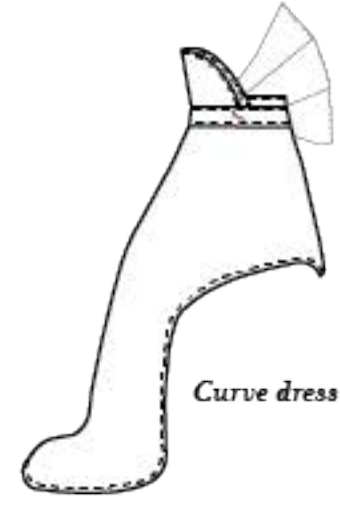
Half split skirt



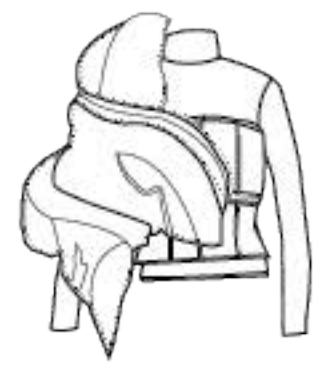
3 Layers of Iro which Means warp-round skirt



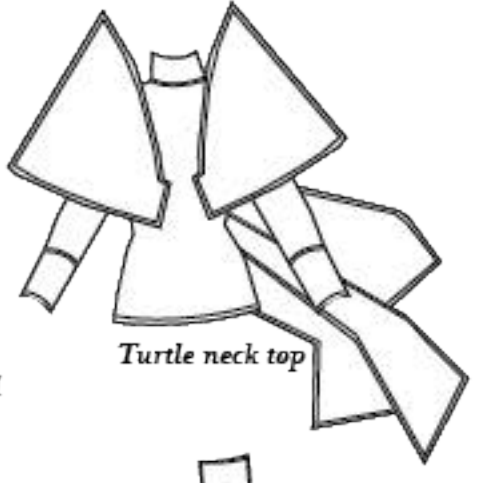
Pleated shawl



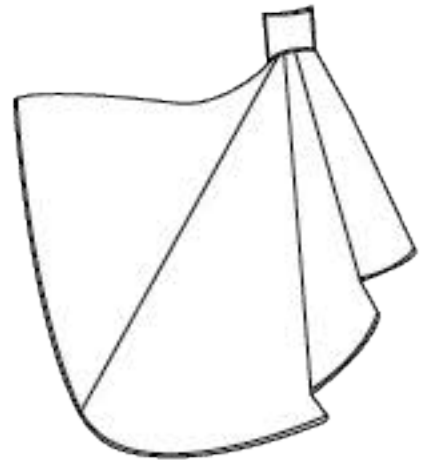
Curve dress



One hand shawl



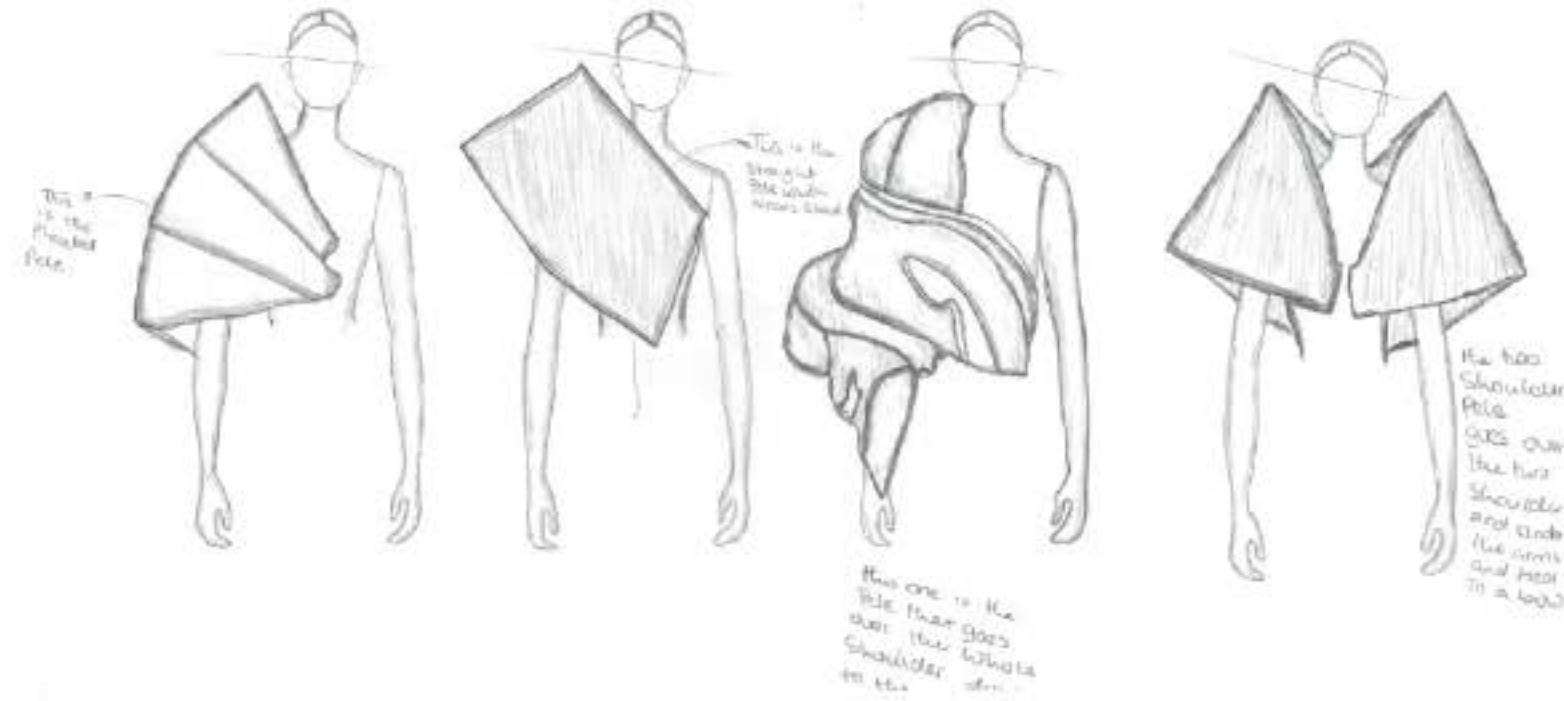
Turtle neck top



Pleated detachable skirt - train

DRAWINGS AFTER COLLAGES MADE TO INSPIRED SILHOUETTE AND SHAPE

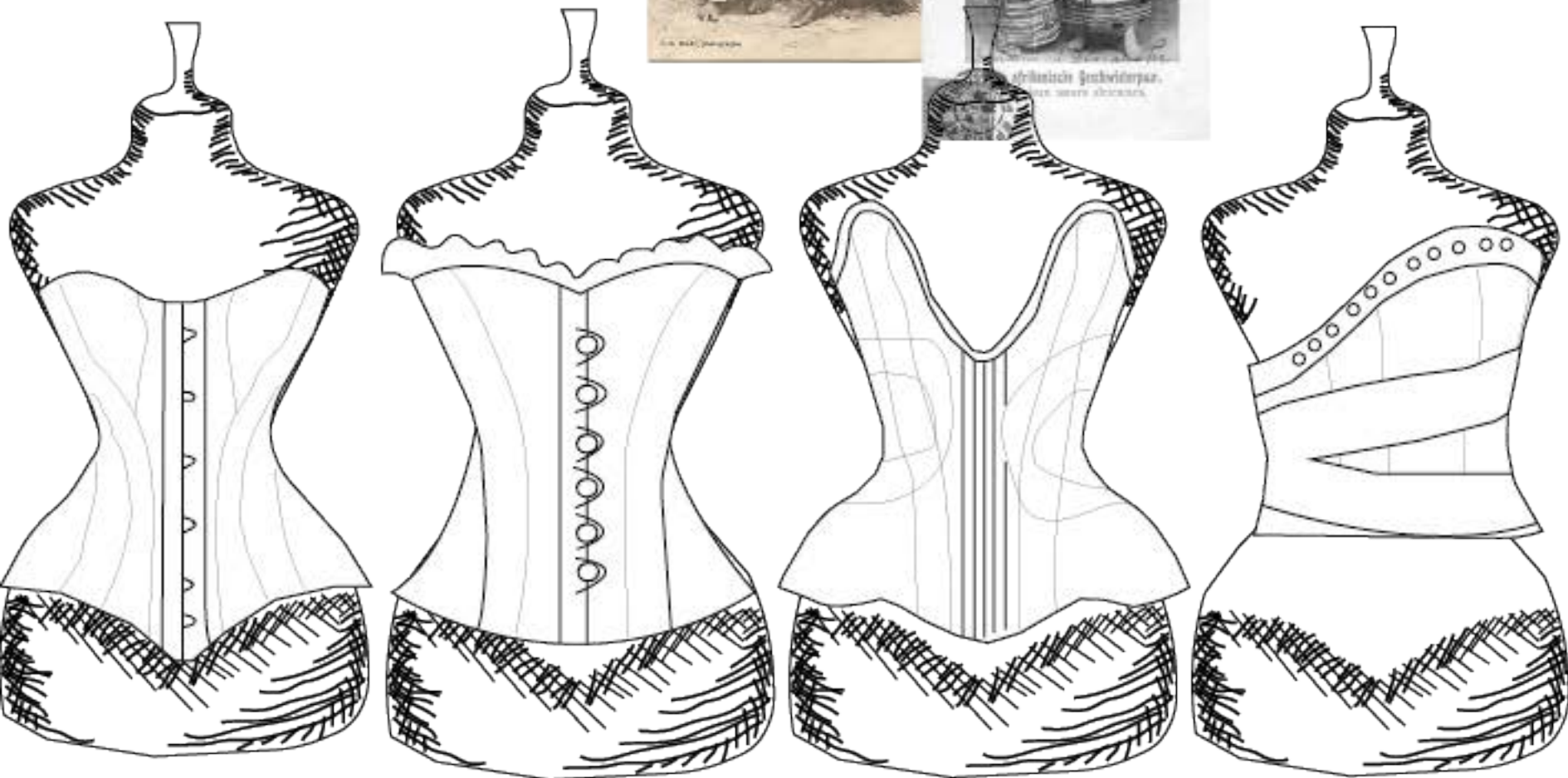
PALE DESIGN DEVELOPMENT



INSPIRATION INSPIRATION



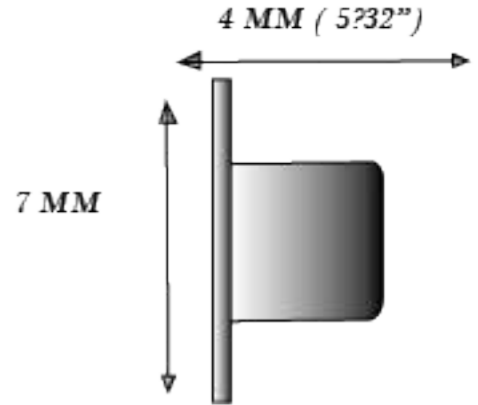
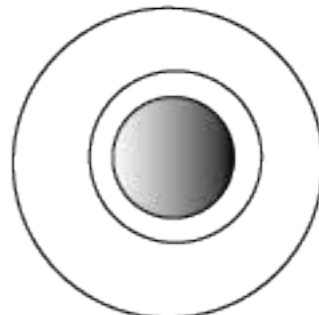
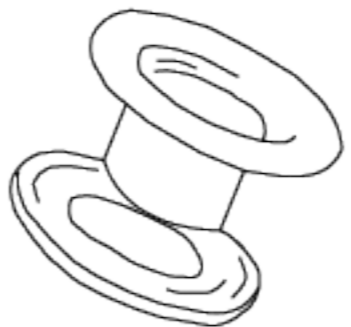
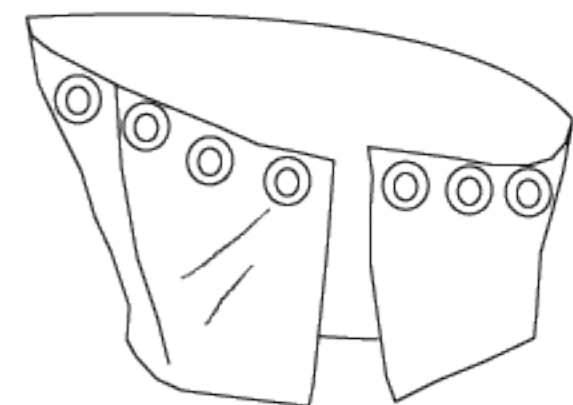
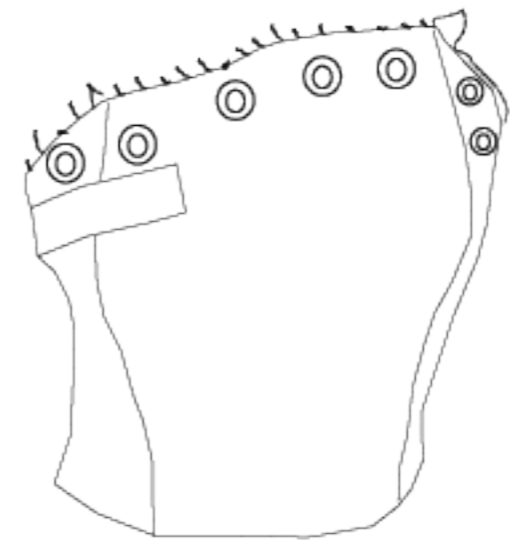
DESIGN DEVELOPMENT



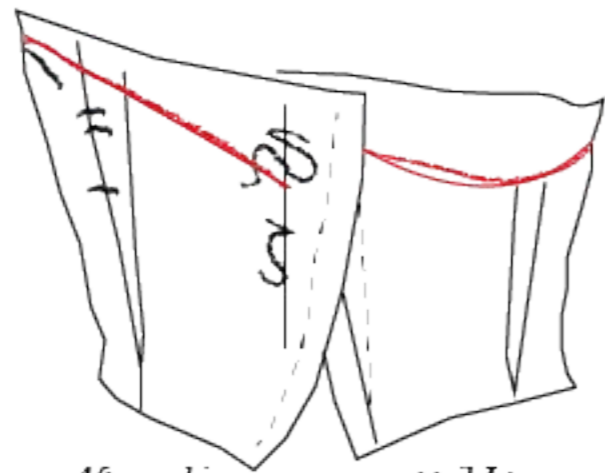
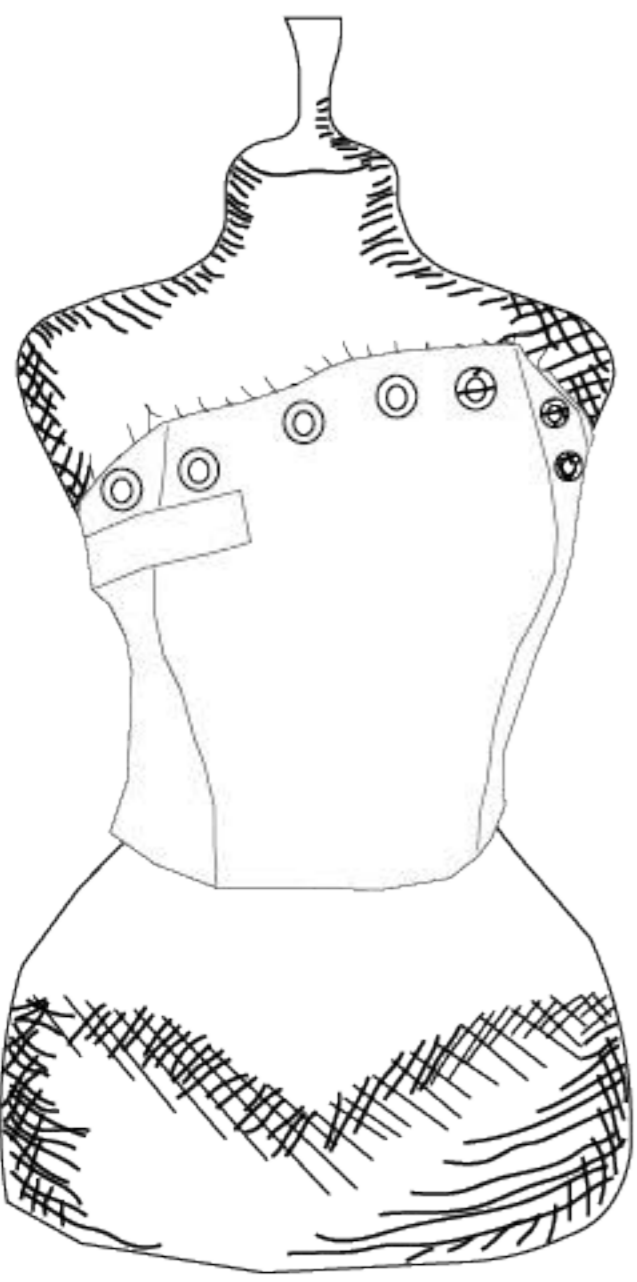
Corset



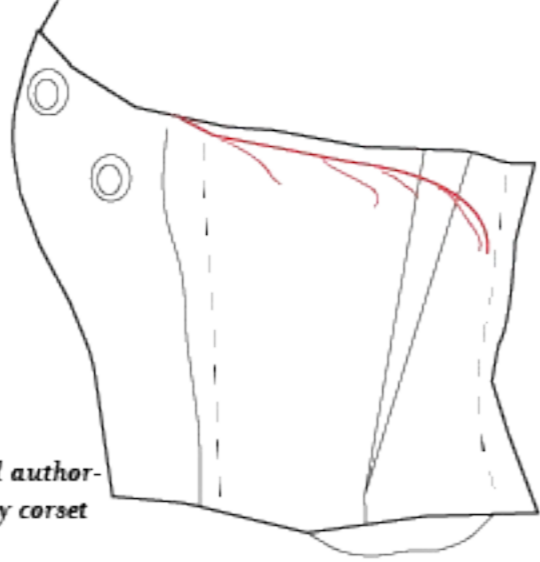
An eyelet is a metal, rubber, or plastic ring with flanges are used to strengthen or reinforce holes punched in thin fabrics. It is a smaller counterpart of a grommet that is bigger in size and used for more heavy duty materials.



TOIL DEVELOPMENT



After making my new corset toil I try on a model but it was a little to big is I used red marker to draw the new line were I wanted to fit, from there I made a new pattern.



This is were I started authorizing the fitting of my corset



To make my corset I have to use a basic block bodies and started creating the shape and the fitting of my corset





After sewing all of my pieces together I fit it on a model to see how it fits and were it needs adjustment.



Final design idea was one shawl on the shoulder, because was thinking about adding a full bodysuit underneath the short dress with bow added at the back

SECOND TOIL DEVELOPMENT



To create my pleated top I started with a piece of calico and a Martinique, I fussed the piece of calico first and then pin it on the mannequin and started pleating once I was done i use the



I used a basic hood block first to create a head form and try it on someone's head to see how I can start developing my headpiece.



Front view



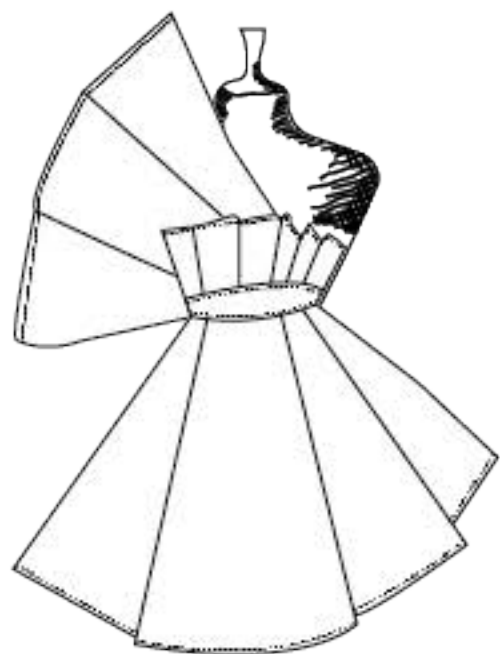
Back view



Side view



This is my first design idea with one shawl over the shoulder



Second design idea was two shawl over the shoulder with bow at the back.



Final headpiece





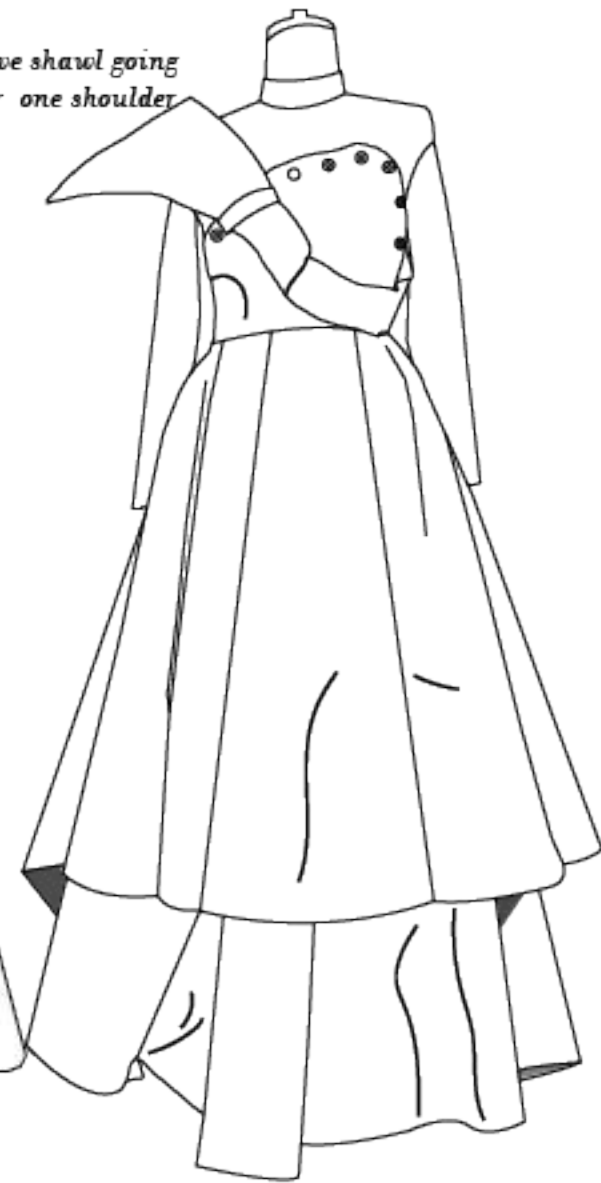
Belt loop



Turtle neck top with long sleeves



Curve shawl going Over one shoulder



Double layer of skirt

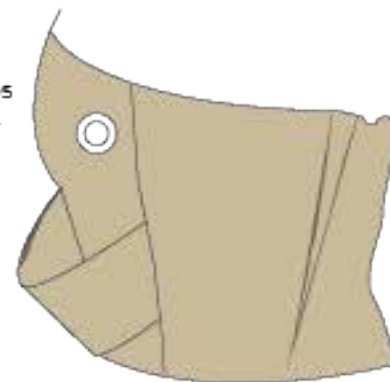


Eyelid



Back view of corset

Double strips Overlapping



Side view of corset



Front view of corset



3D TOILE DEVELOPMENT

FABRIC BOARD



Cotton Satin Fabric
UK
100% Cotton Pigment
Inks - Pigment inks

NET FABRIC NYLON
Width: 147cm
Fabric: 100% Nylon

Fashion Soft Jersey Fabric
96% Polyester 4% elastane -
Sublimation inks
Max Print: 1.51m, Weight:
200gsm
Properties: Soft, stretch,
flowing drape
Deep, rich colours, fine
detailing

Pima Lawn 100% Cotton
washed 75gsm Reactive
Help me decide
Soft, light and airy. Silky
smooth surface, flows and
drapes beautifully. Softer
washed finish. Plain
weave 100% cotton lawn.
Super bright colours and
deep blacks, strong wash
fastness, using reactive
ink chemistry.

Cotton Satin Fabric UK
100% Cotton Pigment Inks -
Pigment inks
Max Print: 1.36m, Weight:
172gsm
100% Natural cotton
Printing

MARBLED VELVET
220GSM
Marbled Velvet 220gsm
Max Print: 1.41m
Weight: 220gsm
Roll Width: 1.43m
Face : 100% poly. Backing :
65% poly 35% cotton

FLORENCE POWER
NET 60GSM
Florence Power Net
60gsm
Max Print: 1.34m
Weight: 60gsm
Roll Width: 1.36m
90% Polyester 10%
elastane

Silk Satin Fabric
MAX PRINT: 1.36M
WEIGHT: 85GSM



On the page i was just testing my print to see which one with work in my collection

FINAL LINE UP

