

P O R
T F O
L I O

A N N A R O T T N E R

A collection that pushes Western society outside traditional masculine stereotypes and demonstrates more diversity within menswear. There is not only one way of getting identified as masculine, there are several ways.

A modern and contemporary collection that makes people reconsider traditional gender stereotypes. As garment shape inspiration I have been looking at Oskar Schlemmer's 'triadic ballet' that represents eccentric garment shapes and pushes boundaries by only focusing on the basic geometric forms (triangle, square

and circle). One specific part that stood out to me during my research is the contrast between hard materials being used in Oskar Schlemmer's ballet and the soft movement of the dance itself. Masculinity is a term that often gets associated with being strong and tough. Soft garment shapes and textures form a contrast to the associations of having to be strong and tough. Furthermore, the colours pink and blue (blue for boys and pink for girls) build the key colour palette for my collection. The strict distinction between pink and blue is a

response to the socially constructed gender norms Western society has created. Before we get born, Western society has already built a gender frame that exactly tells us the correct way to behave, act and dress. Therefore, it is extremely hard to overcome the existing stigmas of masculinity. The existing fear of not getting classified as masculine and therefore, according to Western society, not being a real man restricts menswear and puts a lot of pressure onto men.

ESCAPING
EXPECTATIONS



Hoodboard



exaggerated



Fig. 1.

Fig. 2.

Progressive



Voluminous



Fig. 5.

soft



Fig. 6.

fluffy



Fig. 4.

eccentric

- Fig. 1. Geometric collage (2021), own photograph.
- Fig. 2. Triadic Ballet (1922), by Oskar Schlemmer.
- Fig. 3. Mark Making VR (2021), own photograph.
- Fig. 4. Triadic Ballet (1922), by Oskar Schlemmer.
- Fig. 5. Mark Making VR (2021), own photograph.
- Fig. 6. Untitled (no date) by Ronan Bouroullec.

Colourboard



Fig. 1.



Fig. 2.

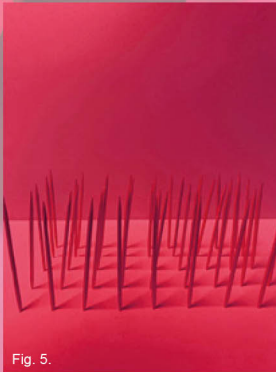


Fig. 5.

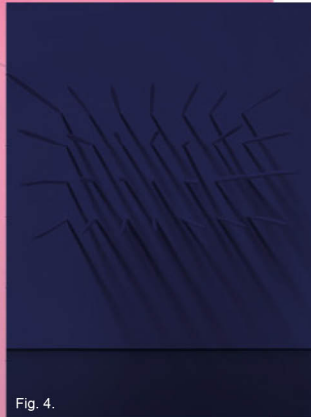


Fig. 4.

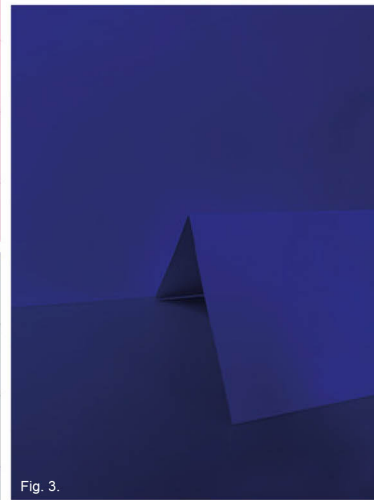


Fig. 3.

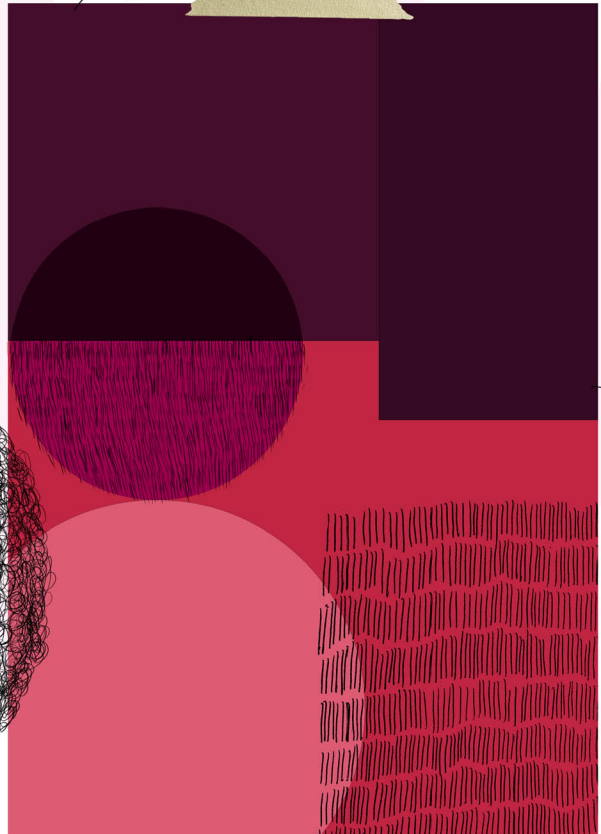


Collage

↓ line crisp lines

↓ basic geometric forms

garment silhouette



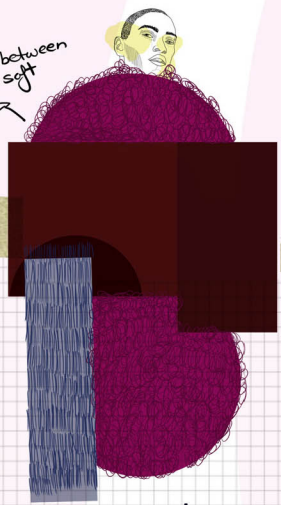
↓ linear

↓ different colour hues

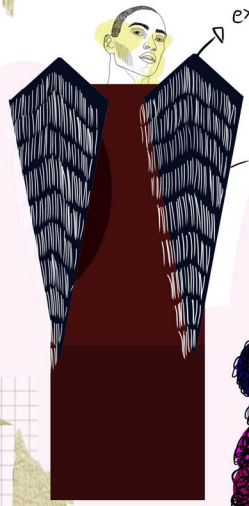
↓ contrast between hard & soft

↓ soft textures

contrast between
hard & soft

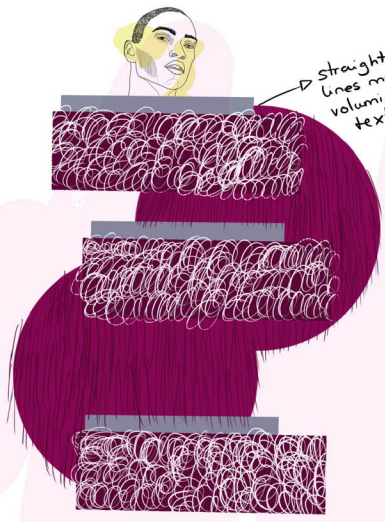


exaggerated
sleeves



gathered
at parts of
sleeve

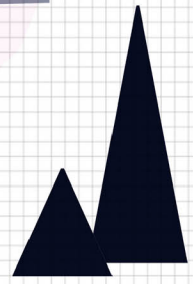
straight
lines meet
voluminous
textures



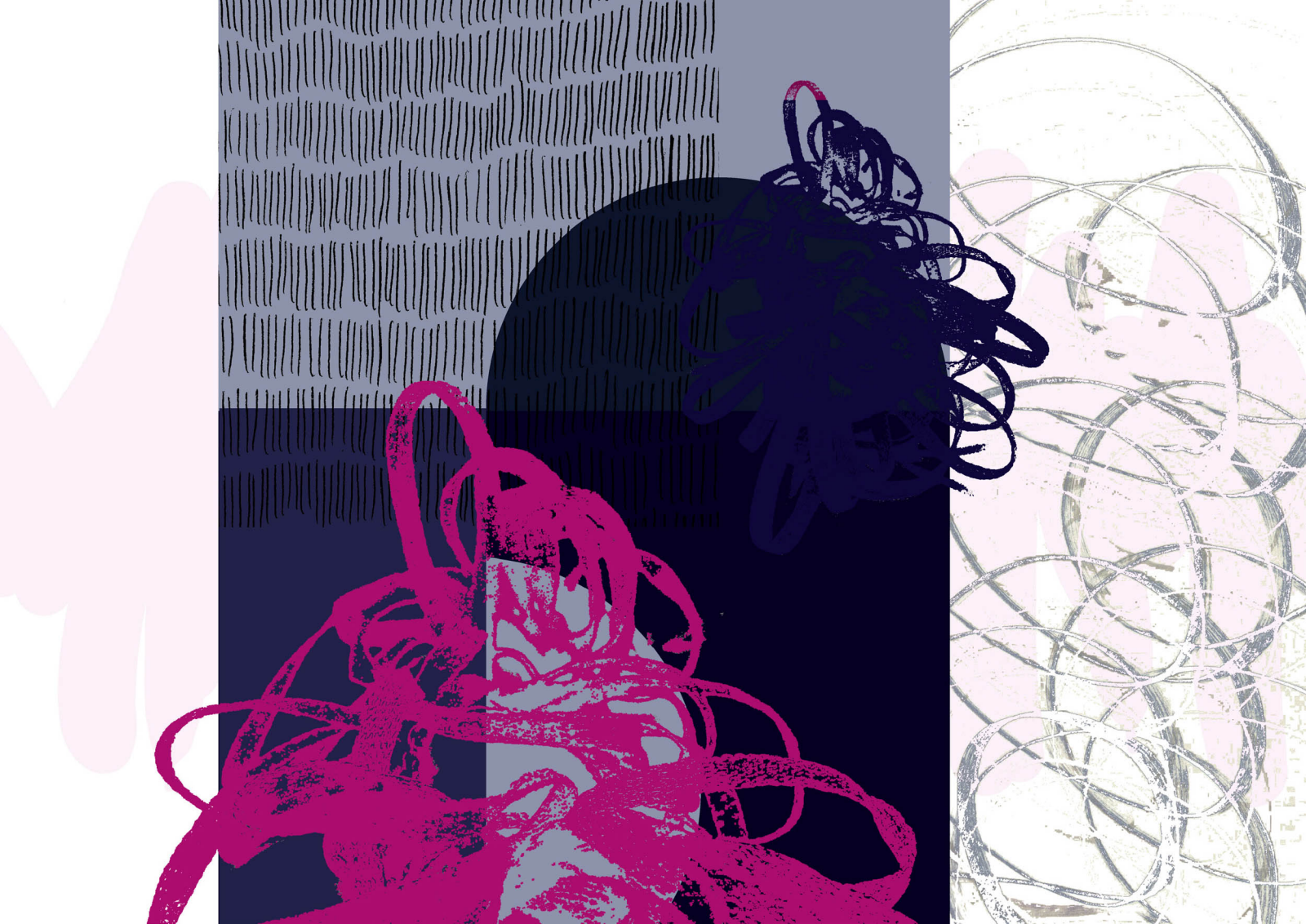
colour
palette
Pink & blue



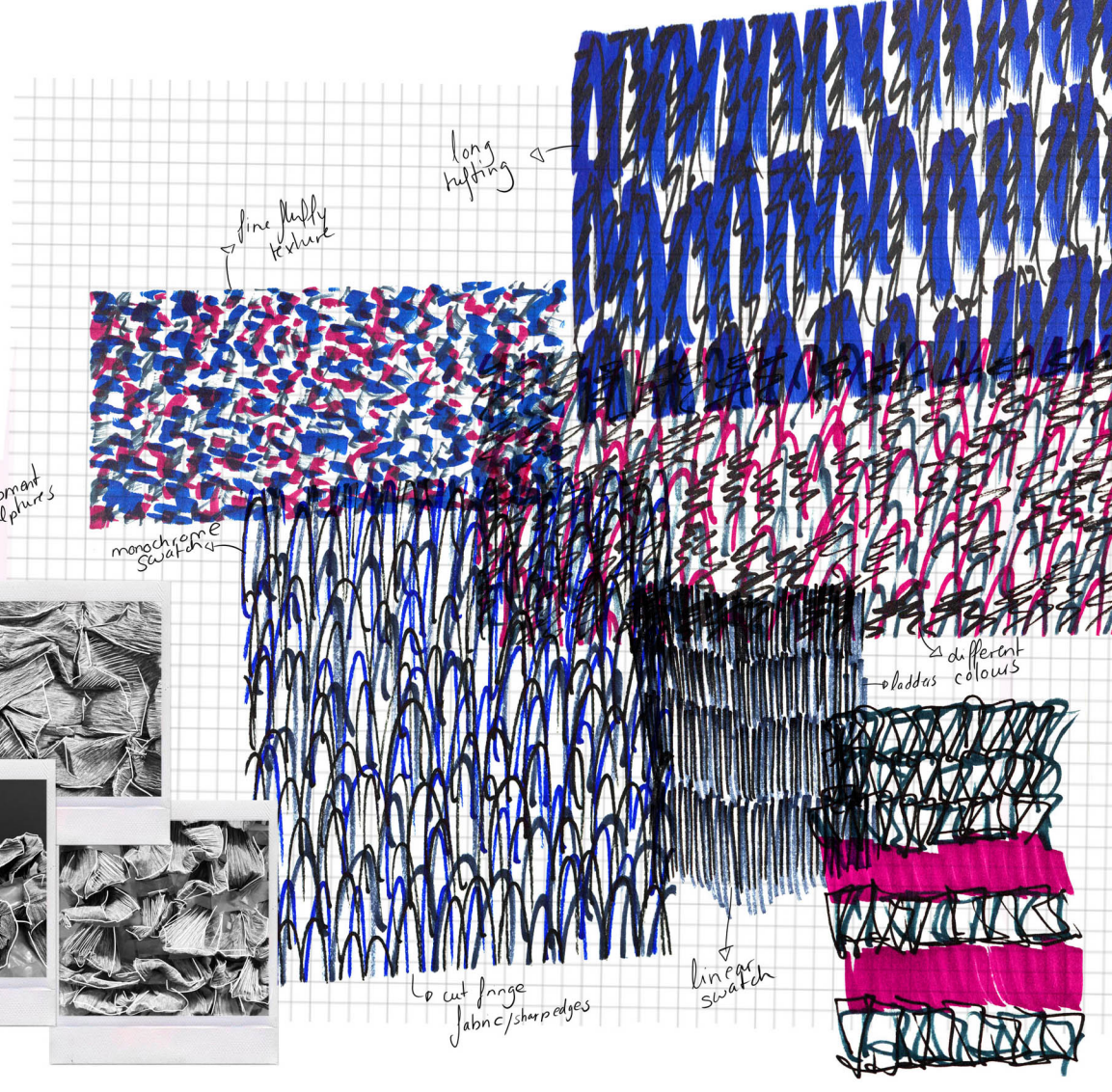
suggests
fluffy
shoes











long
hitting

fine fluffy
texture

texture development
from mini sculptures

monochrome
swatch

different
colours

linear
swatch

↳ cut fringe
fabric/sharp edges

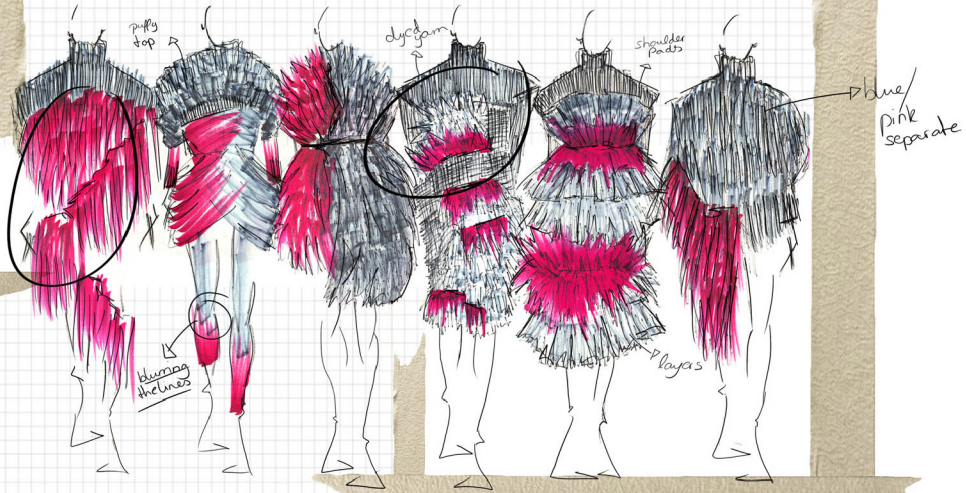
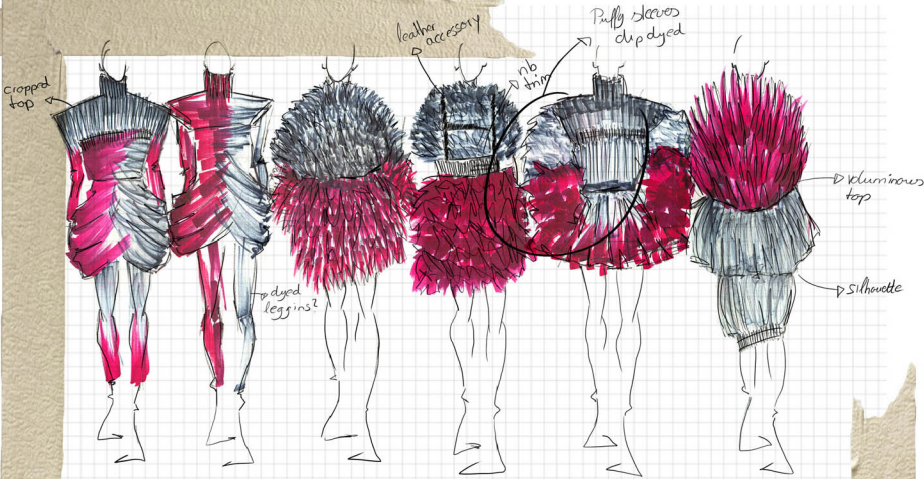




Texture

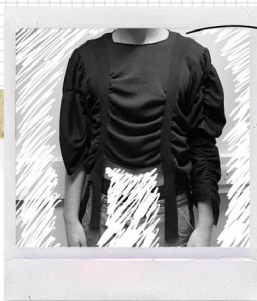








↳strapping



↳draped top



↳elastic Band

