

LINEAR

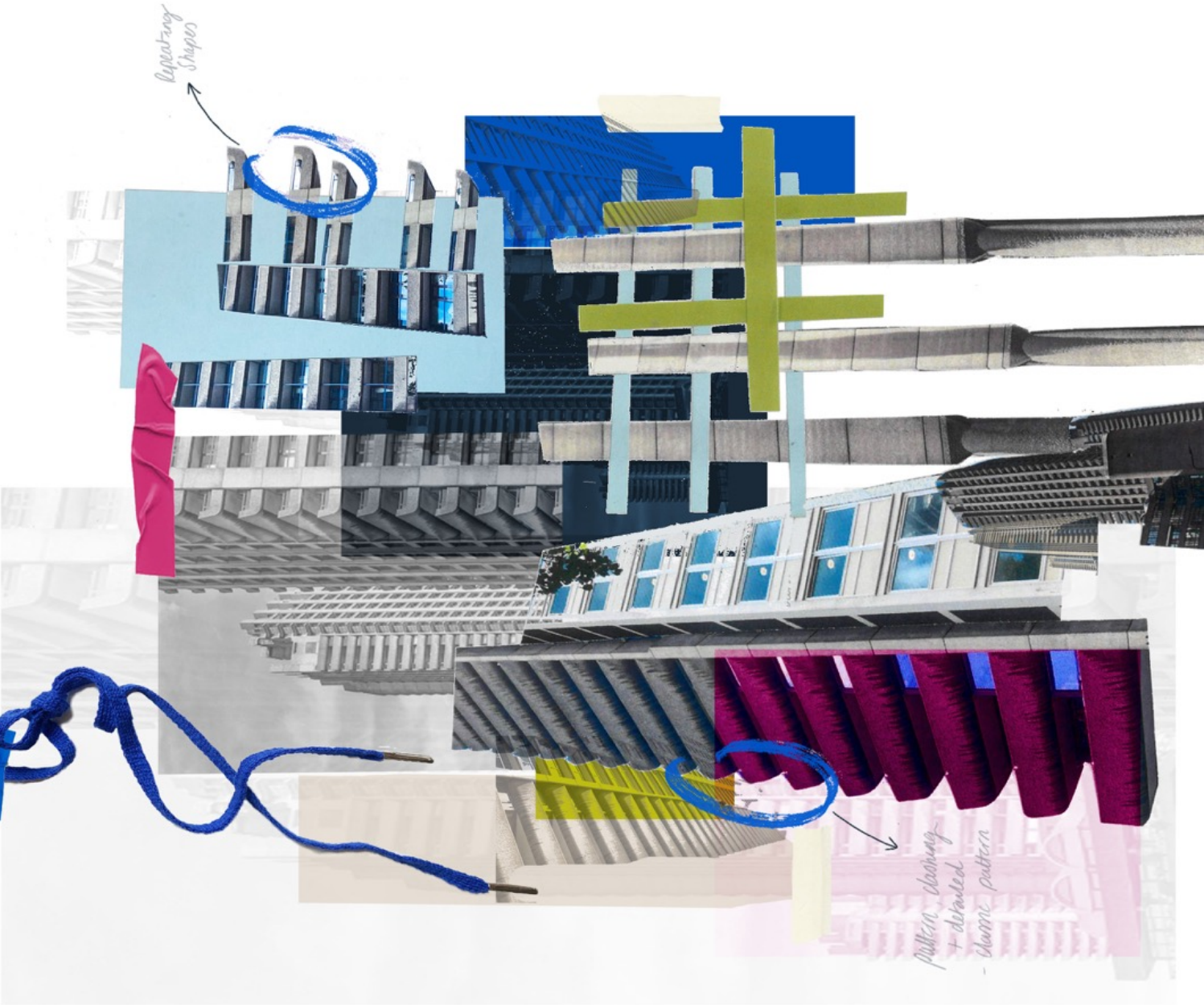
MAXIMALISM

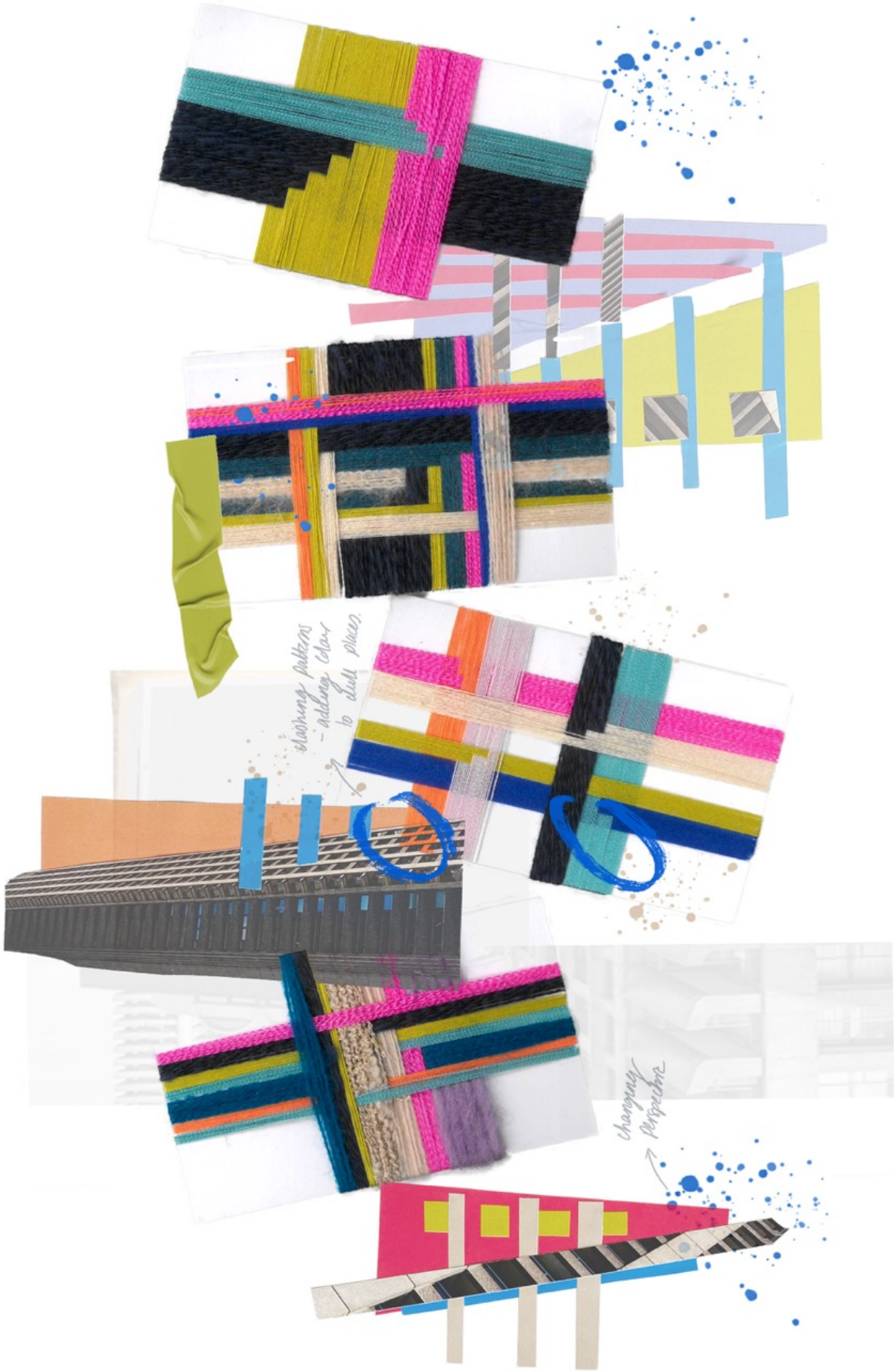
HIDDEN

RR

COLOUR PALETTE

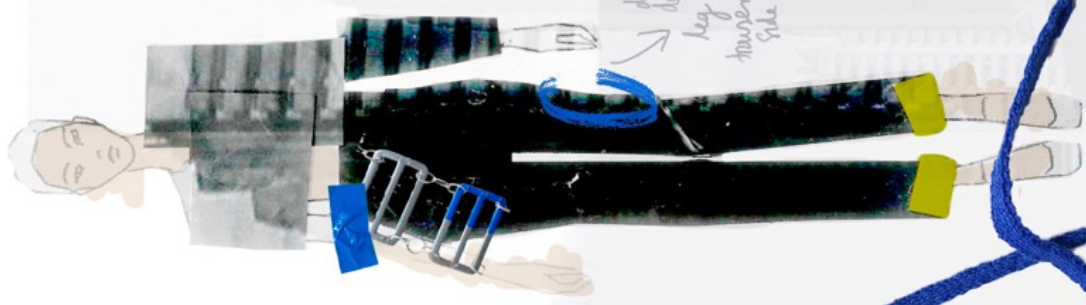
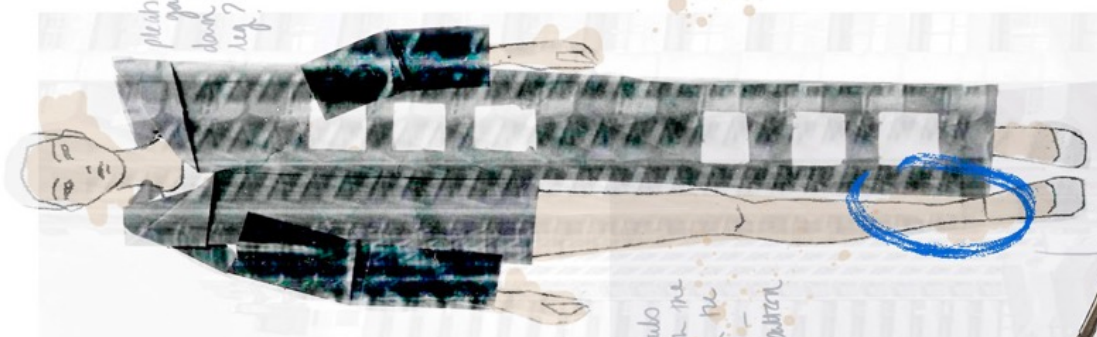
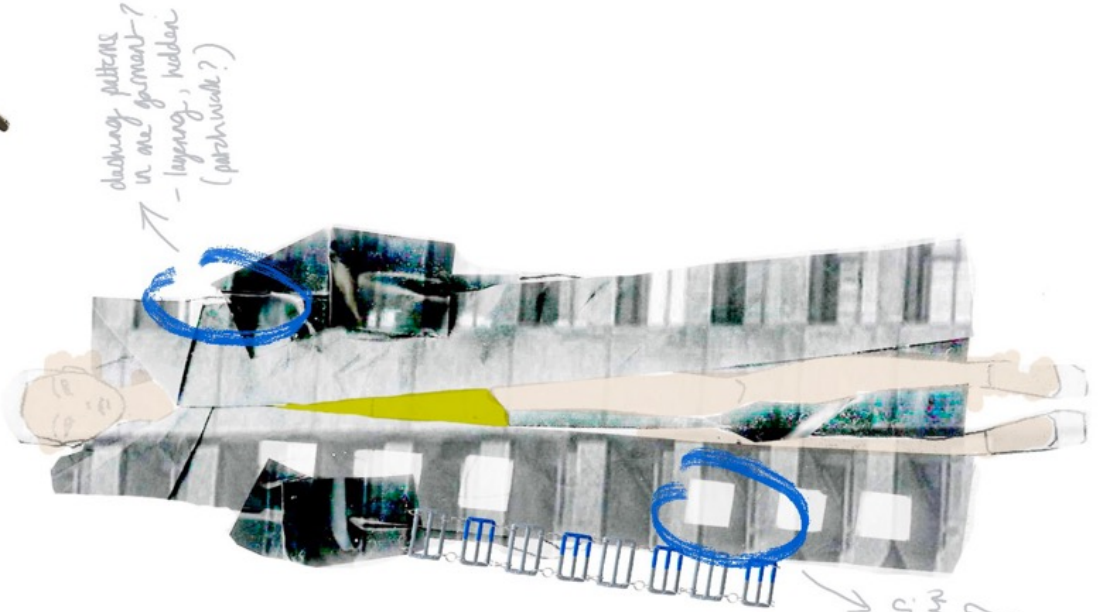






*clarifying patterns
- adding color
to dull pieces.*

*changing
perspective*



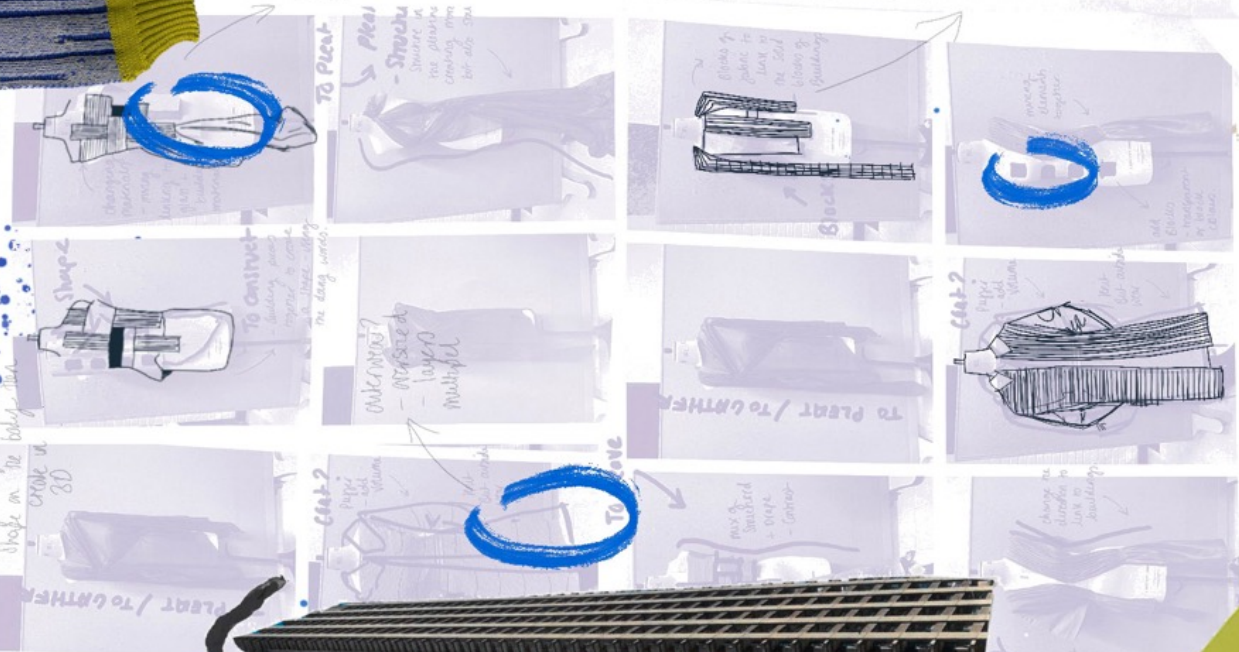
Asymetric hem
to link to the
top of the hoodies





Meaning
Material's history
& layering
pieces

Meaning
& details
(translate to
long lines?)



Using Collage to create
Shape on the body - then
create in
3D

TO HEAVE

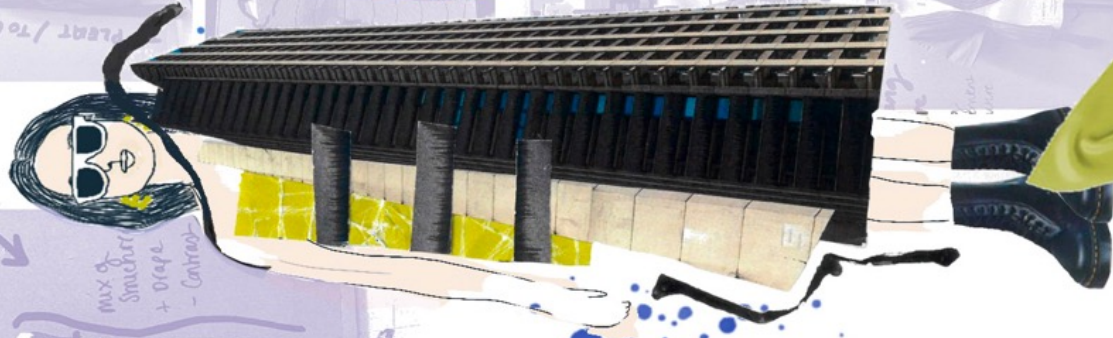


TO PLEAT

Pleat
- Structure in
the pleats
creating more
but also SW



mix of
Structure
+ Drape
- Contrast

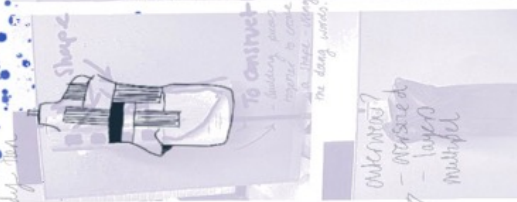


TO HEAVE



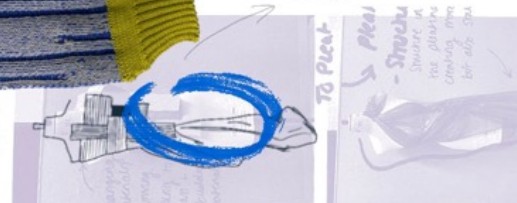
TO HEAVE

mix of
Structure
+ Drape
- Contrast



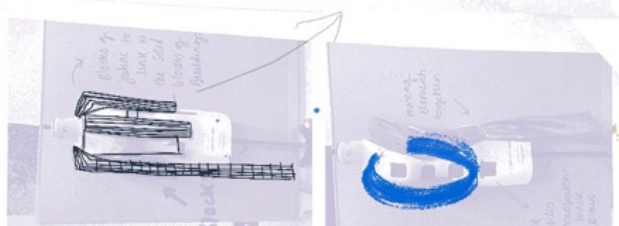
TO HEAVE

mix of
Structure
+ Drape
- Contrast



TO HEAVE

mix of
Structure
+ Drape
- Contrast



TO HEAVE

mix of
Structure
+ Drape
- Contrast



TO HEAVE

mix of
Structure
+ Drape
- Contrast



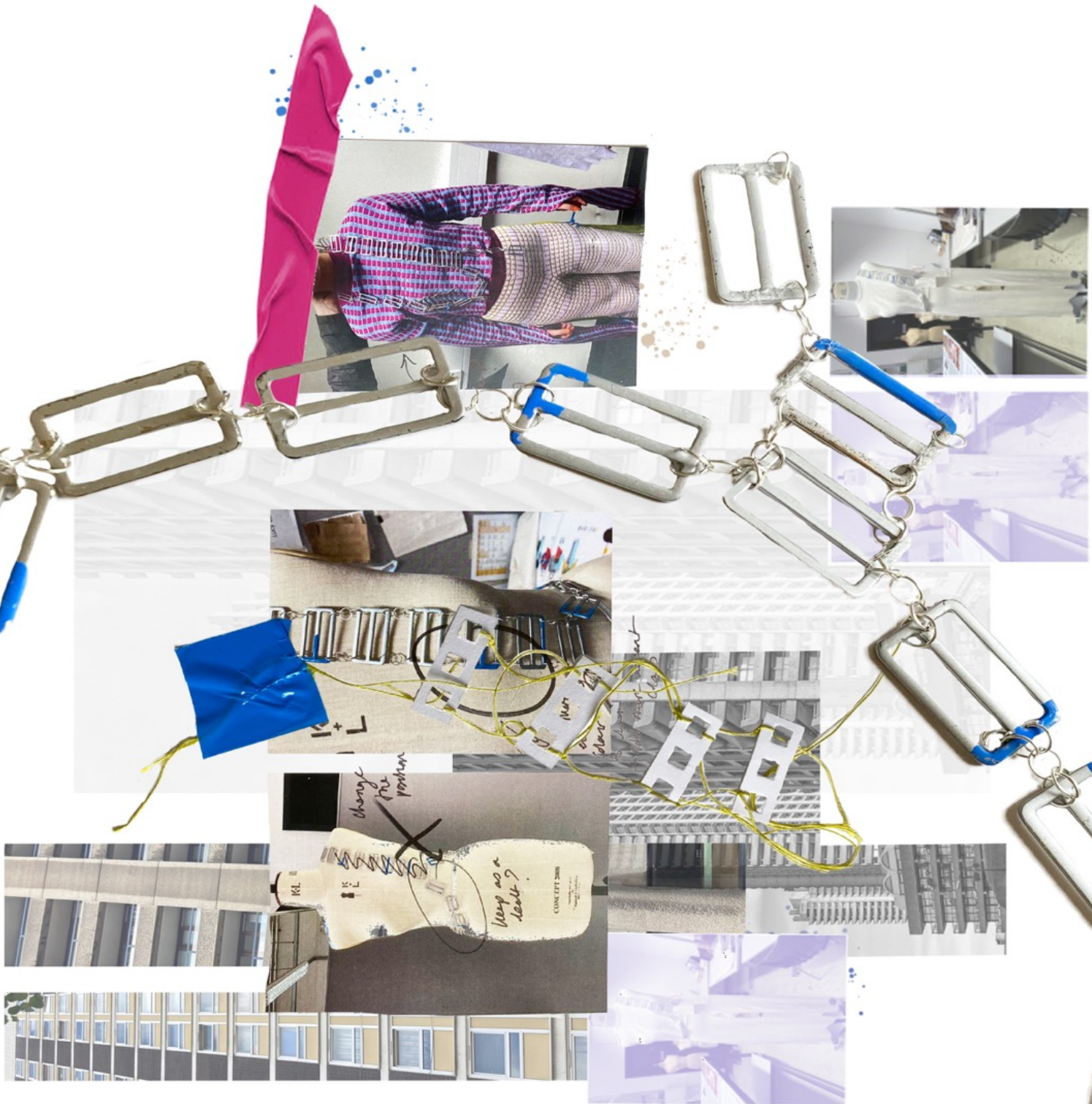
TO HEAVE

mix of
Structure
+ Drape
- Contrast

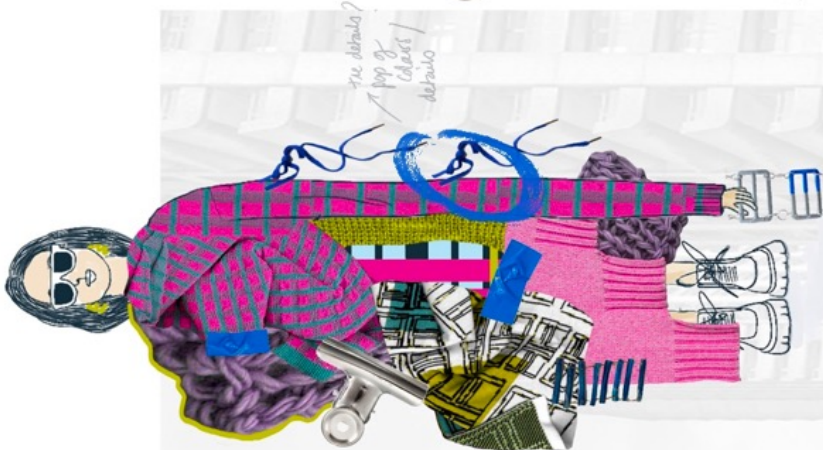


TO HEAVE

mix of
Structure
+ Drape
- Contrast



COLLAGE/PATTERN ILLUSTRATIONS



GARMENT 2 - TOILE DEVELOPMENT



Flowers quite big + excessive
- will stand out

Mixing patterns
- Neutrality patterns
- clean

long pleats
- playful + fun

Drape of the scarf
- Royal but
- wrap - fluid

in predictable
placement of pattern
- Bauhaus

Collar more
smaller + more
weight -
- comes to stand
up

Slightly
looser by scarf?

Not or layers?
- consistency by
- smooth to
touch
- add a rougher
quality?

Steps more
smaller?
- double the
amount - include
my same!

GARMENT 1 DEVELOPMENT





PATCHWORK W/ FLATLOCK
100, 70, 2.50

INTARSIA 70

MOCK RIB AND STRAPPING

INLAY MOCK RIB 70

BIRDSEYE JACQUARD 120

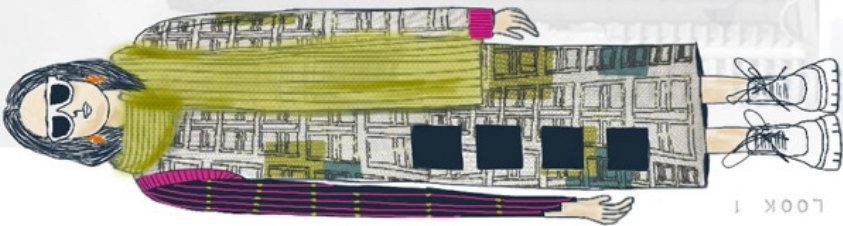
MOCK RIB W/
STEP 70

INTARSIA 70

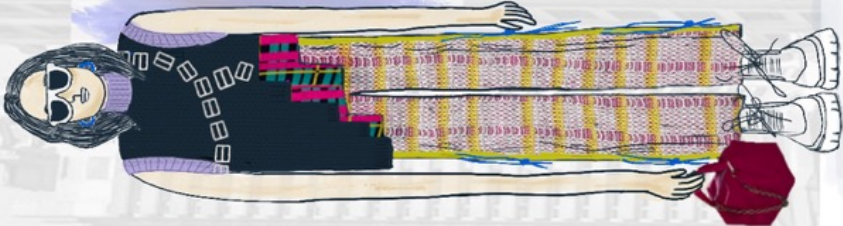
BIRDSEYE JACQUARD 120

HIGH AND LOW BUTTS W/
EYELETS 100

HOVING MOCK RIB 70



LOOK 1



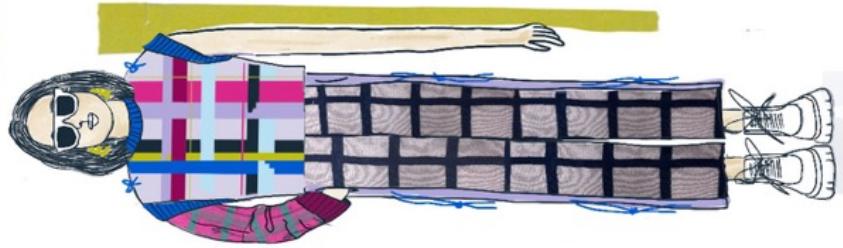
LOOK 2



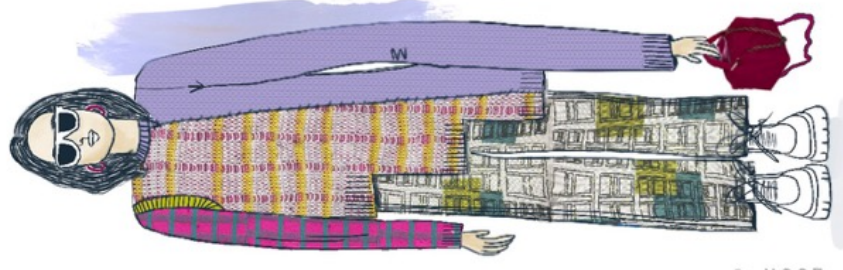
LOOK 3



LOOK 4



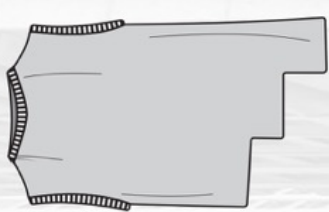
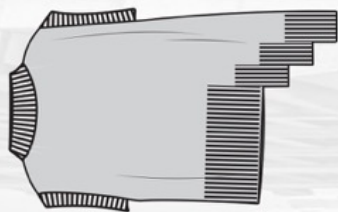
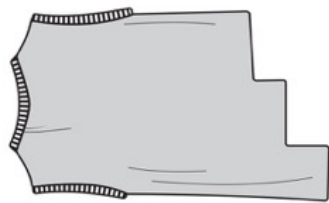
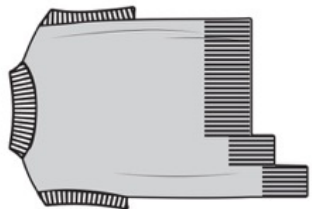
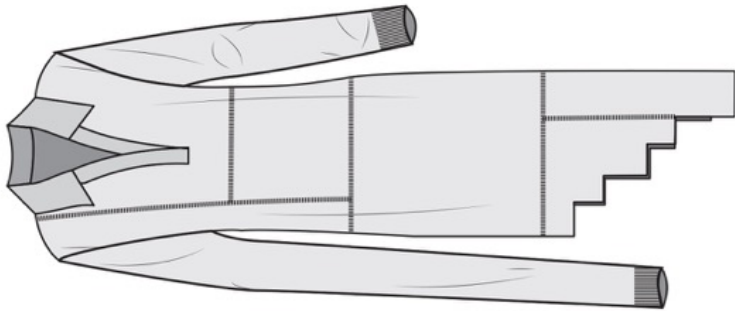
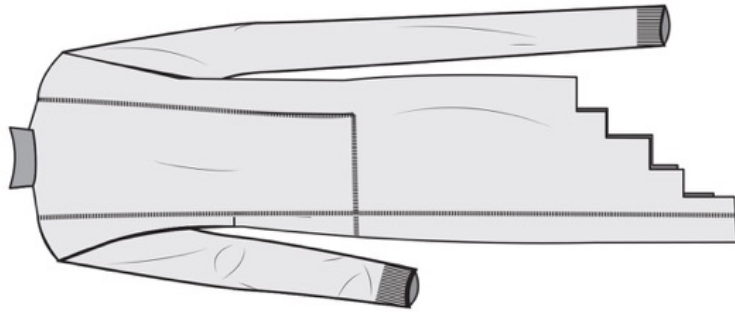
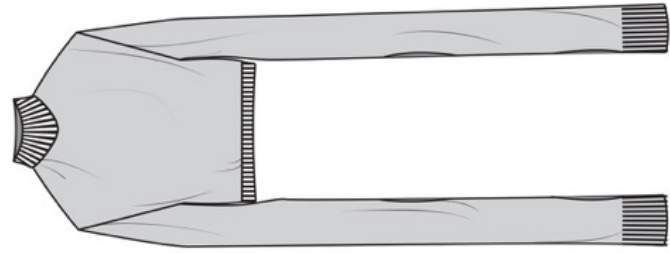
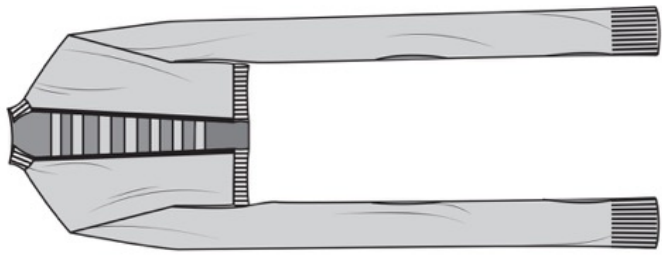
LOOK 5



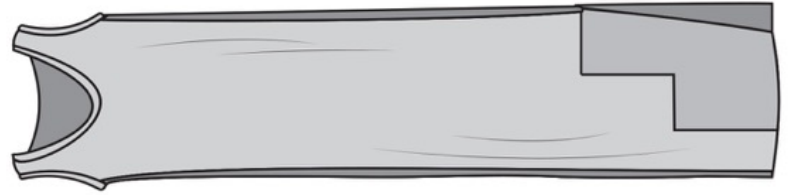
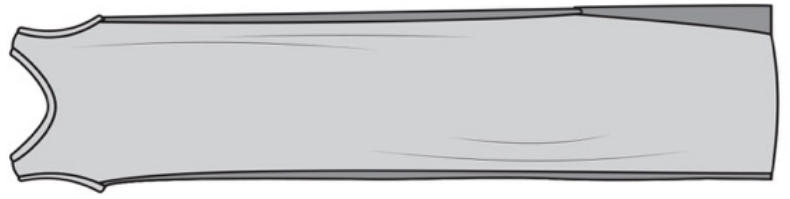
LOOK 5



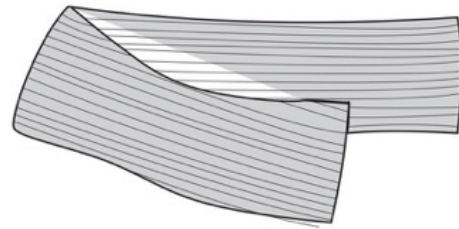
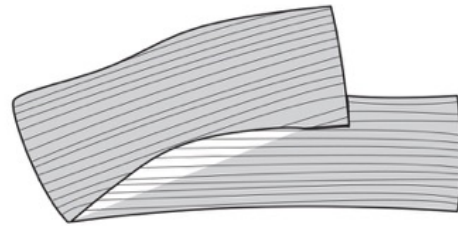
CAD FLATS



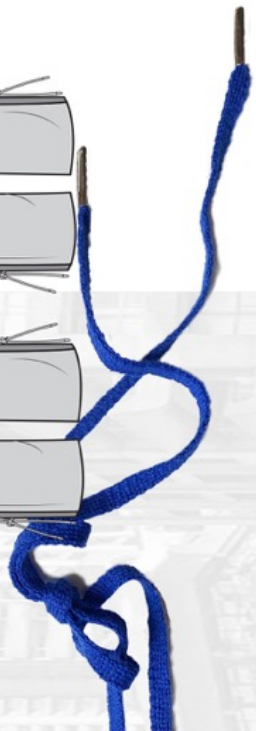
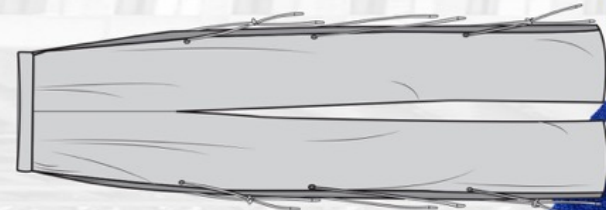
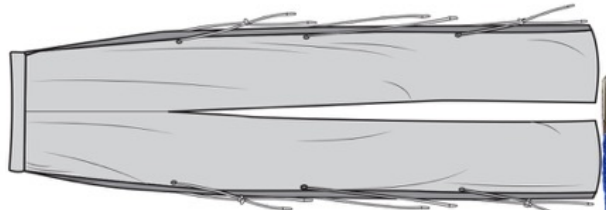
OUTFIT 3



OUTFIT 2



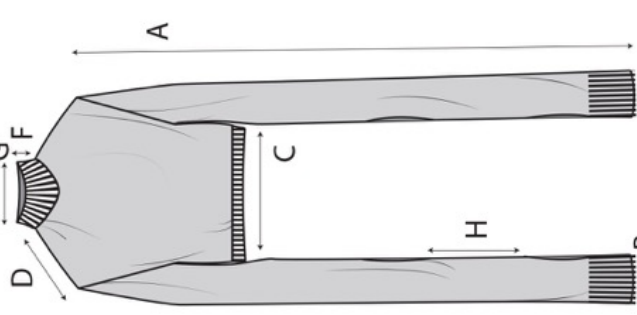
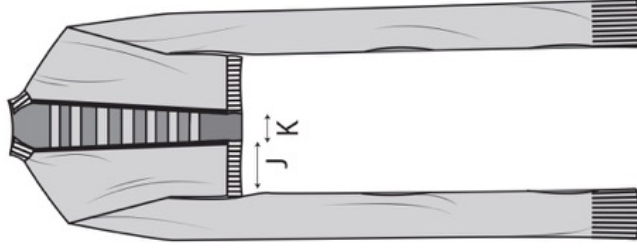

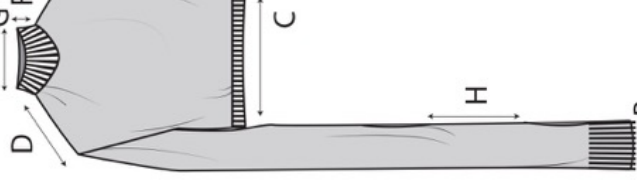
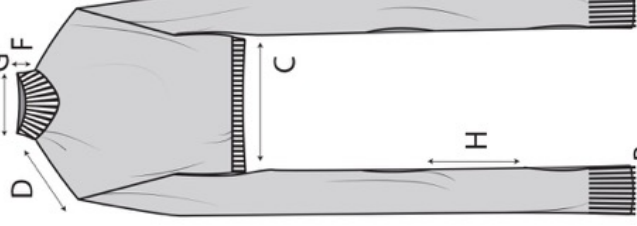
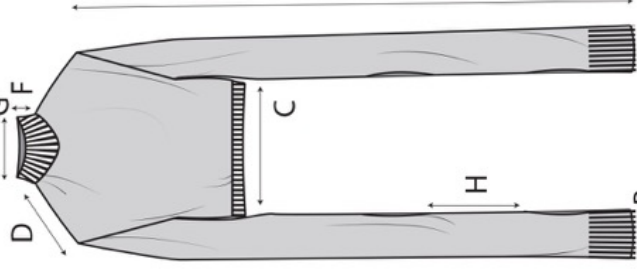
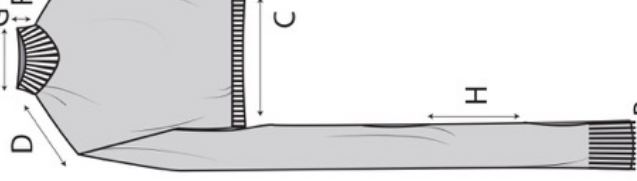
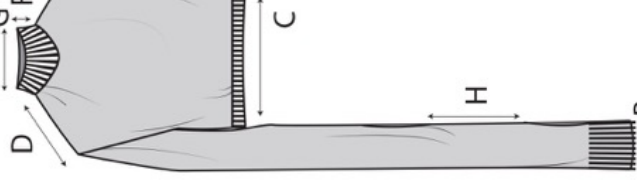

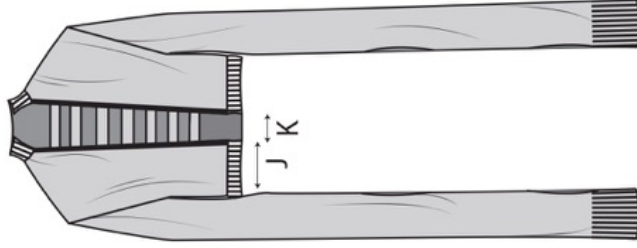
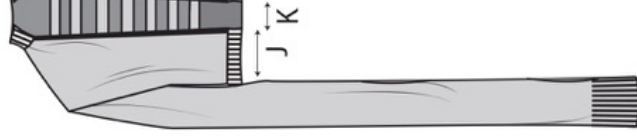
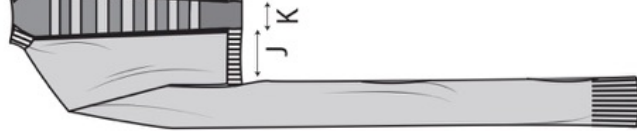
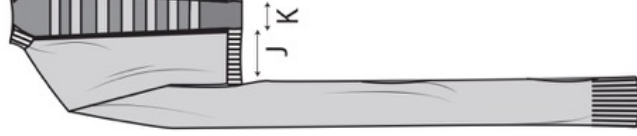
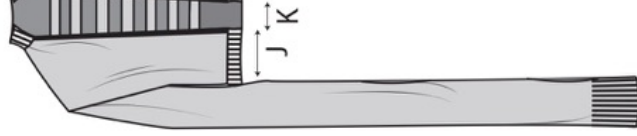
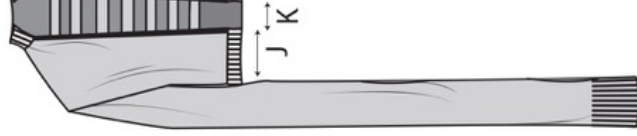
OUTFIT 1



GARMENT SPECIFICATION SHEET

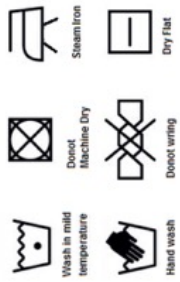
STYLE DESCRIPTION /NO.	DATE: 24/05/2022
CATEGORY: WOMENSWEAR	VERSION: 1
SEASON: S/522	SIZE: 6-8
DESIGNER: ELLA HANNINGTON	

GARMENT DESCRIPTION: JUMPER WITH LONG SLEEVES W/ ARM CUTOUTS AND STRAPING DETAIL ON THE BACK

REF.	MEASUREMENT POINT	CMS	GARMENT FRONT	GARMENT BACK
A	ARM LENGTH	110cm		
B	ARM WIDTH	20cm (total)		
C	BODY WIDTH	40cm		
D	SHOULDER	15cm		
E	BODY LENGTH	50cm		
F	NECK HEIGHT	7cm		
G	NECK WIDTH	38cm		
H	DISTANCE FROM ARM HOLES	15cm		
I	SINGLE BED TRIM HEIGHT	48cm		
J	BACK WIDETH	15cm		
K	GAP WIDTH IN BACK	7-5cm		
L	STRAPING DISTANCE	1.5cm		
M	BACK NECK GAP	5cm		
N	STRAPING	2cm		

WASH CARE INSTRUCTIONS

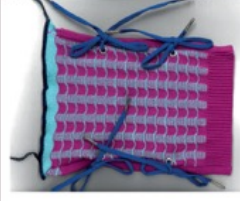
WOOL FABRIC CARE SYMBOLS



DESCRIPTION OF FABRIC:

High and low butt fabric, blue in the foreground with megenta in the background. Integral rib in a 2x1 changing into the high and low butts. Back includes strapping in an open back detail with single bed on each side to contrast the lines. The trims end where the main body ends.

FABRIC 1:



TRIMS:

Neck trim is a 2x1 rib on a 10g with 2 ends of megenta. Cuff trims are integral to the knit and are also a 2x1 trim. Waistband trim is a 2x1 in 8g with a slub yarn.

