

From Field to Fibre: an exploration into British Wool

Inspired by the Fibershed soil to soil concept

After personal research development including my involvement with the NTU natural dye garden and time spent shearing, carding and spinning wool at Fernhill Farm in Somerset, I made the decision to launch my own internal natural dye and fibre system.

One jumper is entirely sheared, and hand spun by me with the sheep ear tag number embroidered into the back to create relationship and traceability by adding narrative to the garment and connecting wearers directly back to the sheep, the land and the soil. Three garments are named after the flock depending on if they are more Romney in handle and characteristics or more Shetland. All the colours in the collection are naturally dyed, with the sourcing and harvesting all within the same radius adding an alum mordant to ensure the garments are colourfast - at the end of use they can be composted and return to the soil where they began.

The collection is designed as seasonless with interchangeable functional garments that can be used throughout the year. The silhouette shape and drape inspiration were taken from traditional farm wear such as braces and chunky jumpers, with a modern twist and a focus on a-symmetrical silhouettes. The intention for the collection is to raise awareness to the British farming system by supporting years of tradition and highlighting the inequalities within the current system, by bridging the gap between, farming, fashion and the natural world.

Harriet Fletcher-Gilhuys

N0829097

BA (Hons) Fashion Knitwear and Knitted

Textiles Design

2022-2023



From Field to Fibre: an exploration into British Wool



Fig. 1 Nomadic grazing, promoted on Instagram (2021) photographed by Paula Wolton



Fig. 2 Shearing at Fernhill Farm (2021), own photograph.



Fig. 3 Undyed Alpaca Wool Jumper, Suri Sweater (2020) from WGSN.



Fig. 4 Hand spun Bluefaced Leicester and Romney shetland (2021), own photograph.



Fig.5 Fleeces and Bobbins at Fernhill Farm (2021), own photograph.



Fig. 6 Spinning (2021), own photograph.

From Field to Fibre: an exploration into British Wool



Fig. 1. Knitwear from the heart (2023) by Herd



Fig. 2. Natural Colours of Spanish Wool (2020) from WGSN



Fig. 3. Southdown sheep (2022) from Hardwear Instagram



Fig. 4. Wyre Scarf in Ecri / Loam - undyed collection (2023) by Herd



Fig. 5. Fleece hanks and natural dyes (2021). own photograph



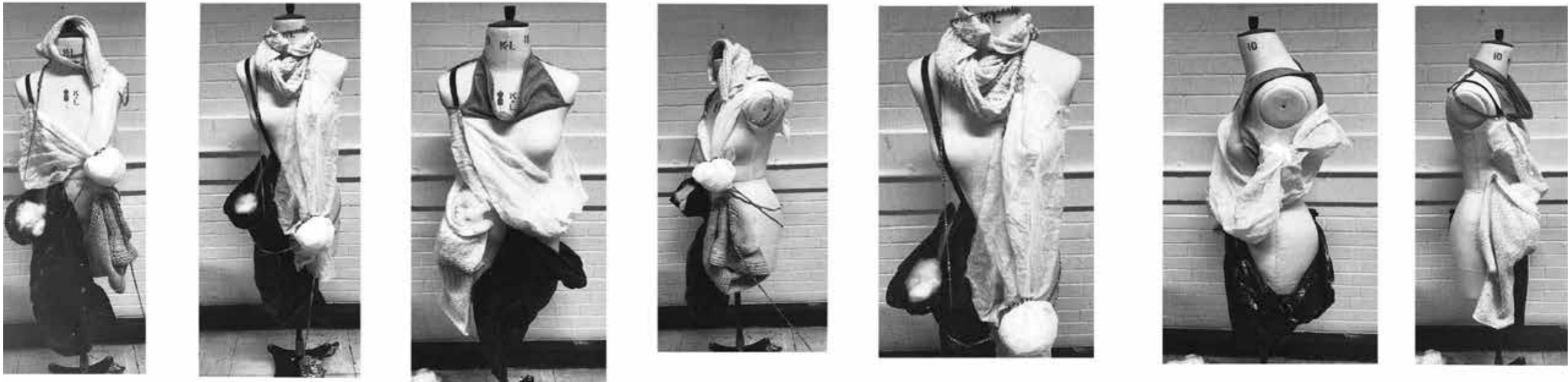
Fig. 6. Freckleton Cardigan in Patchwork (2023) by Herd

Colourboard

Visual Research from Primary Research



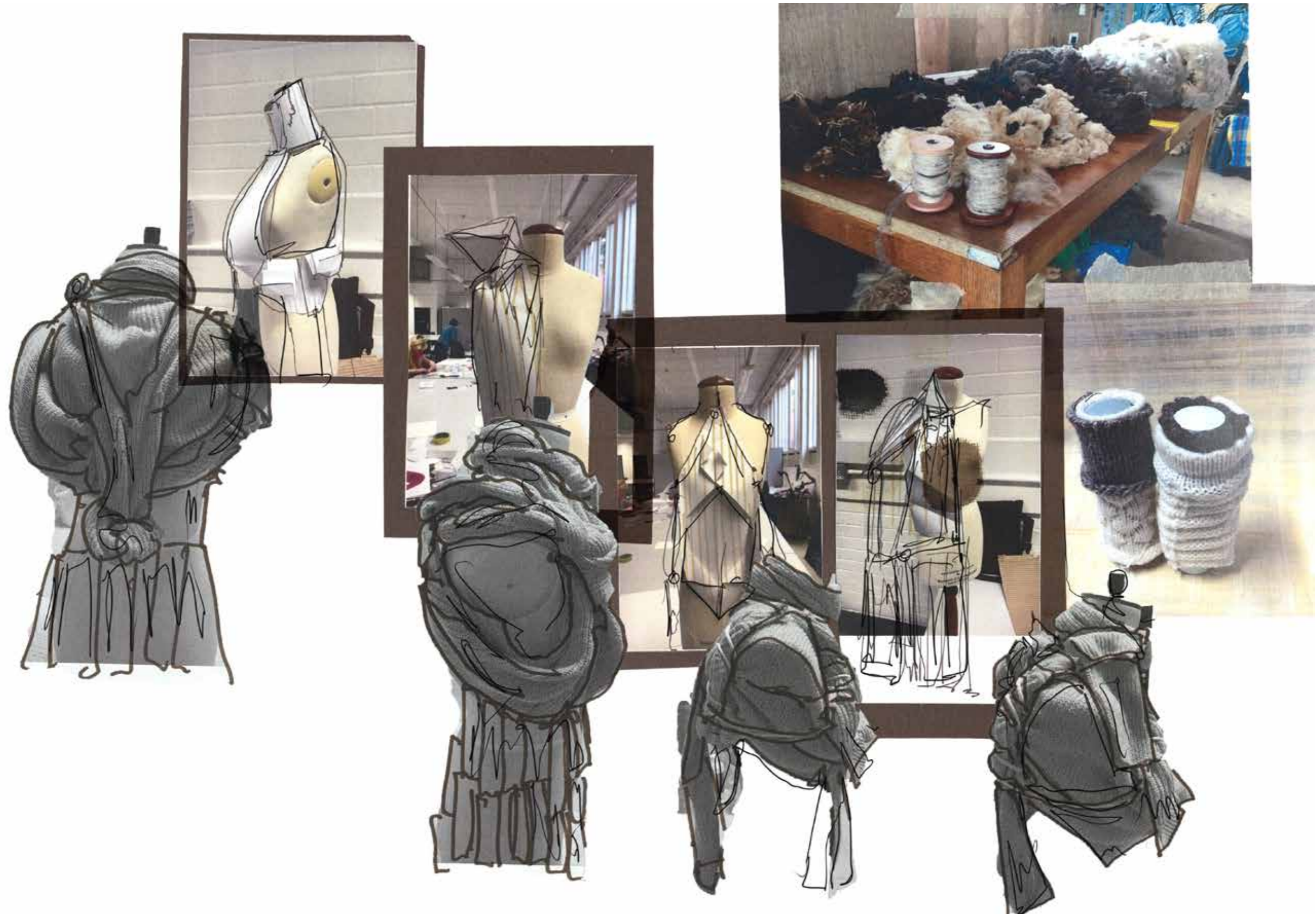
Draping on the Silhouette



Fashion Illustration with Swatches



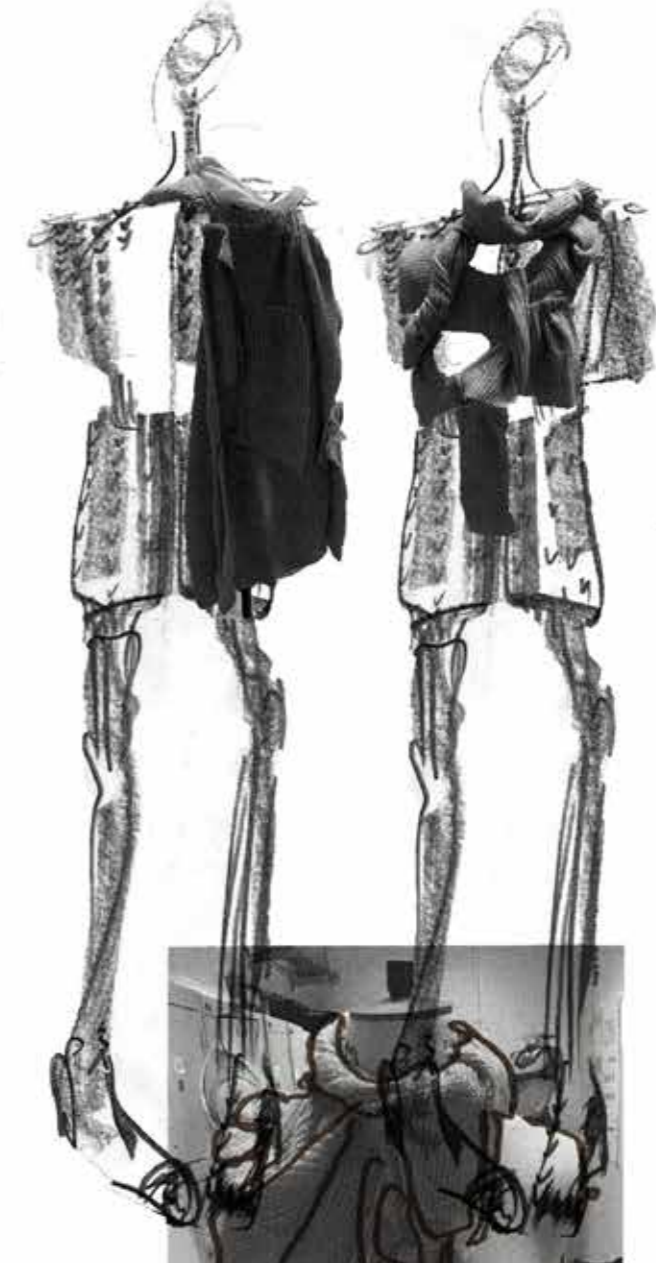
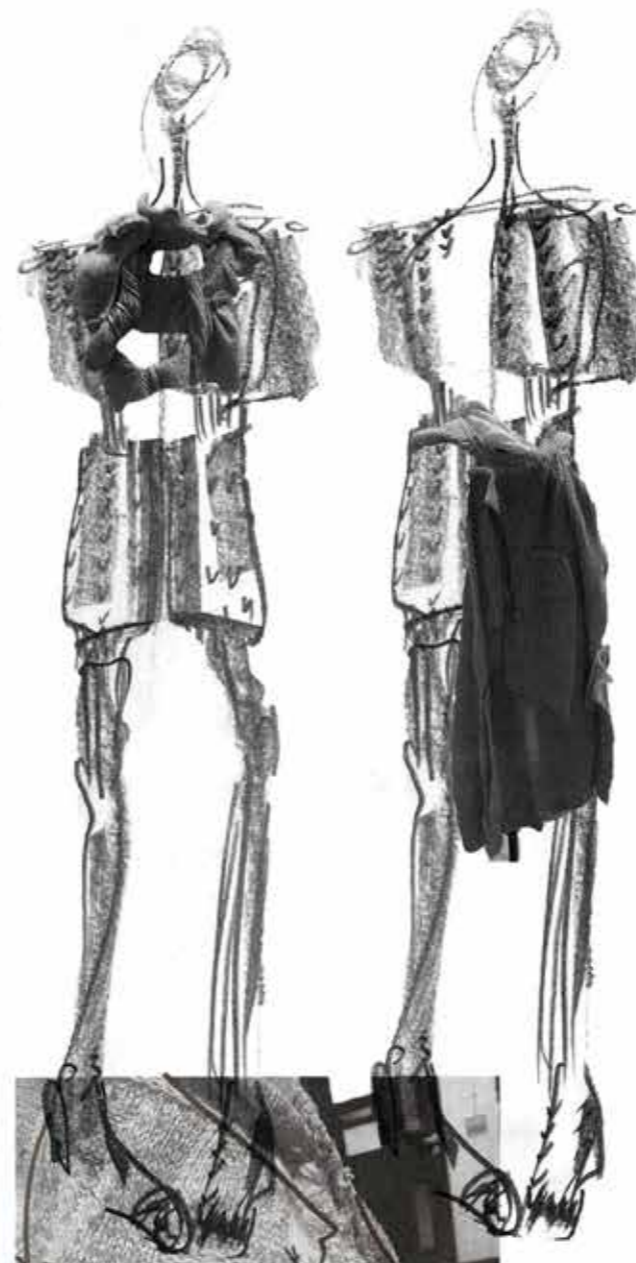
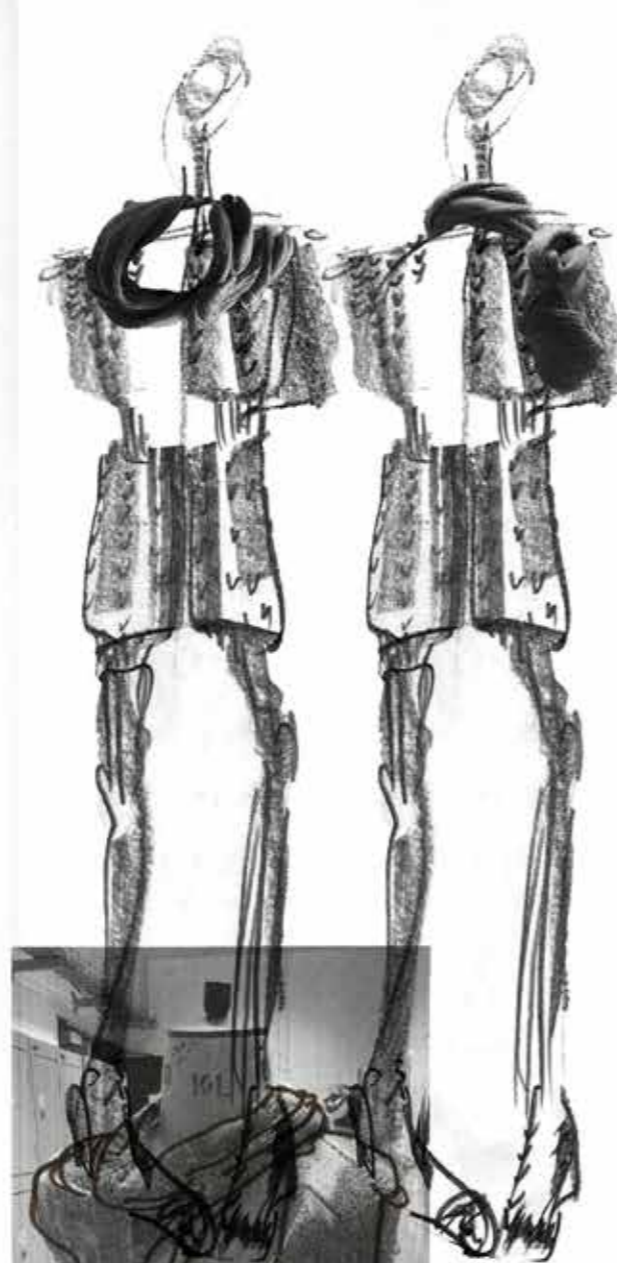
Development for Outfit 1



Fashion Illustration Development with CAD



Development for Outfit 1



Development for Outfit 2

Second outfit development page.



fully finished
raglan jumper
with onion skin
yarn, Alpaca,
couch wool, linen
and ramie



to be used
by pet
model
to finish
from
other
bag
you



shorts
swatch
development

↑ chose lighter
wool and
brown casture
for the panels



→ draping
labore
was used



Development for Outfit 3



CAD FLATS

The Romney Jumper

Outfit 1

Front

Back



100% Hand spun jumper
Romney x Shetland wool (Fernhill Farm)
Shropshire based Blue faced Leicester wool
Onion skin dyed British wool
Responsible wool standard certified

Hand knitted 4.5 mm needles

Outfit 1

Fully Fashioned Joggers

Front

Back

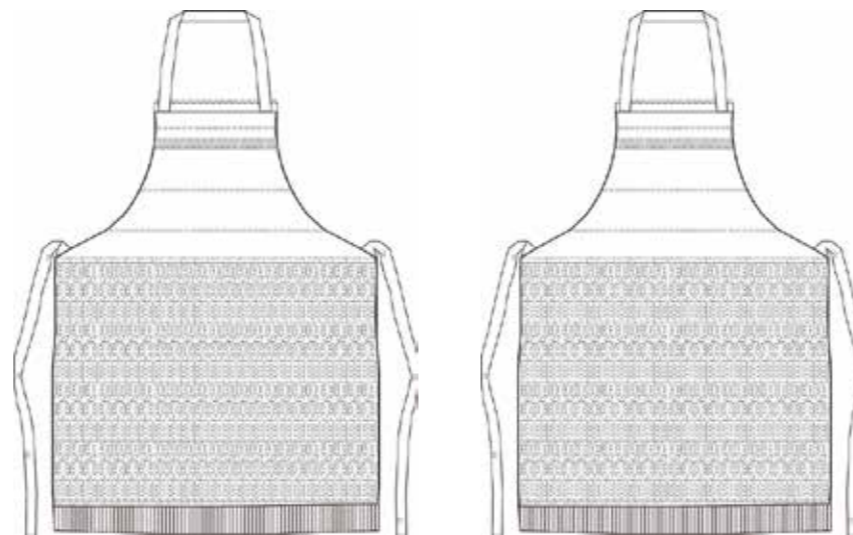


The Romney Apron

Outfit 2

Front

Back



Romney x Shetland wool 4ply sourced from Fernhill Farm
Ecrú (undyed)
Responsible wool standard certified

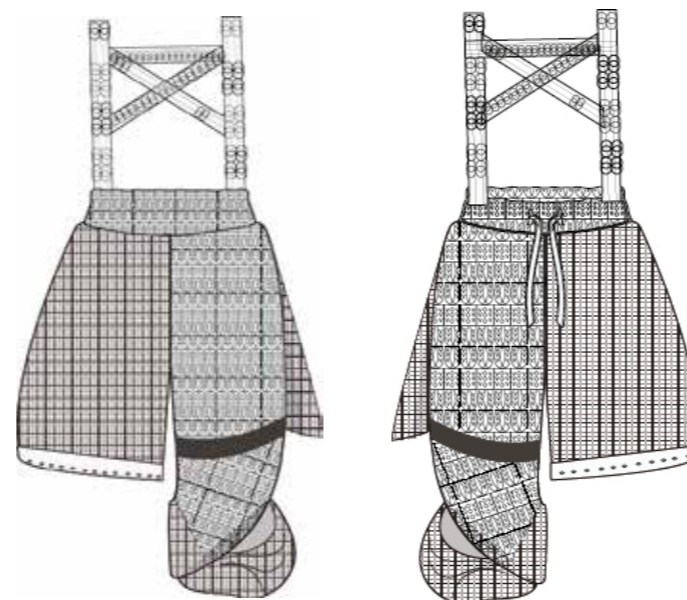
Standard gauge Domestic, partial knit, cable and lace
(T-6)

Outfit 2

Oversized Basket weave shorts with leg wrap

Front

Back

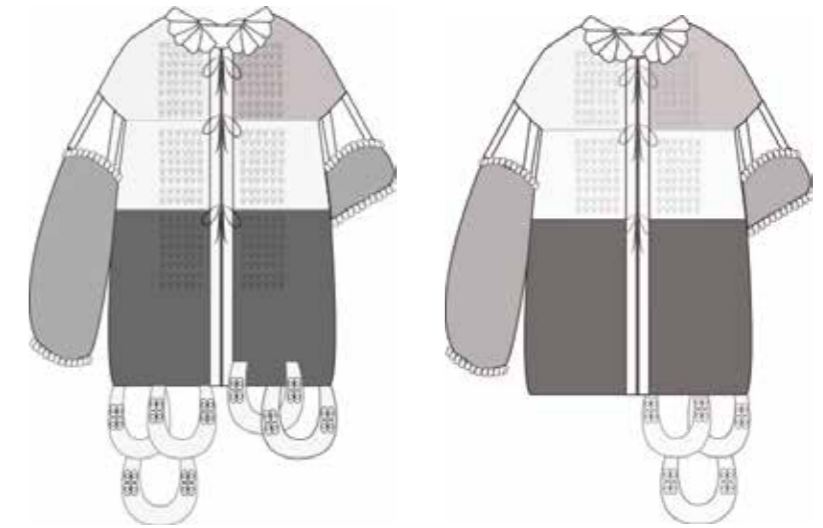


The Shetland Coat

Front

Outfit 3

Back



100% Hand spun yarn
Romney x Shetland wool (Fernhill Farm)
Responsible wool standard certified
100% Alpaca wool
Linen and naturally dyed British wool.

7gg Dubied, Inlay and Mock Rib
Hand knit, moss and garter stitch
4.5 mm needles
(T-13 and 14)

Outfit 2

Fully Fashioned Raglan jumper with tuck stitch and crochet sleeve

Front

Back



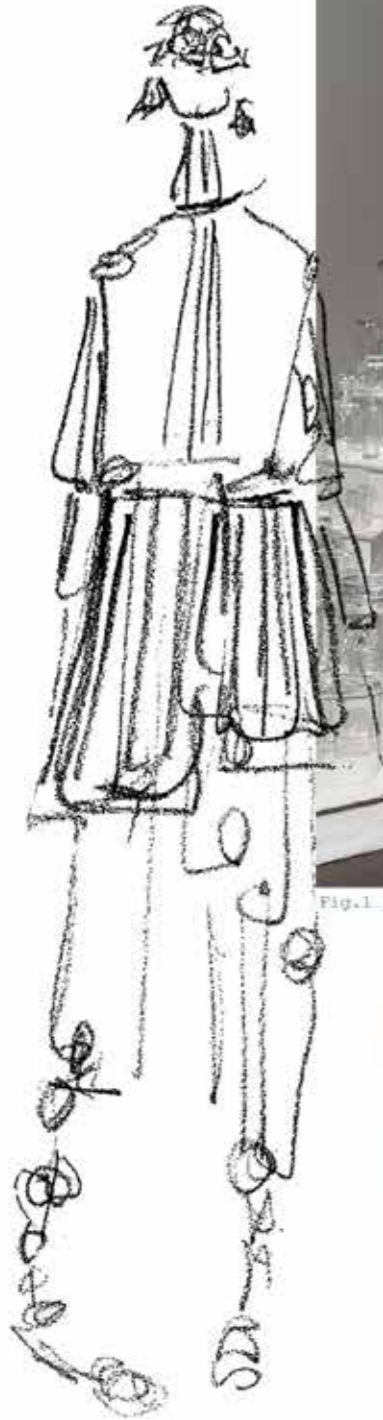
Stitch development inspired by Sheep Fleeces



Fig.1. Pheobe English Ready to Wear (2015) by Vogue.



Fig. 2. Alpacas at Machu Picchu. BSCB Peru - own photo



Stitch Development



Inspired
from initial
conceptual
research



Layers
or elements
of detailing



detailing picked
up line up /
illustrations.

Reflecting
sheep / lambs
fleeces



From Field to Fibre: an exploration into British Wool

Inspired by the Fibershed soil to soil concept



Collection Line up