



AFTER THE NIGHTMARE

FINAL MAJOR PROJECT
PORTFOLIO

HUIXIN SONG (N0832383)



Nuclear nightmare

NAGASAKI

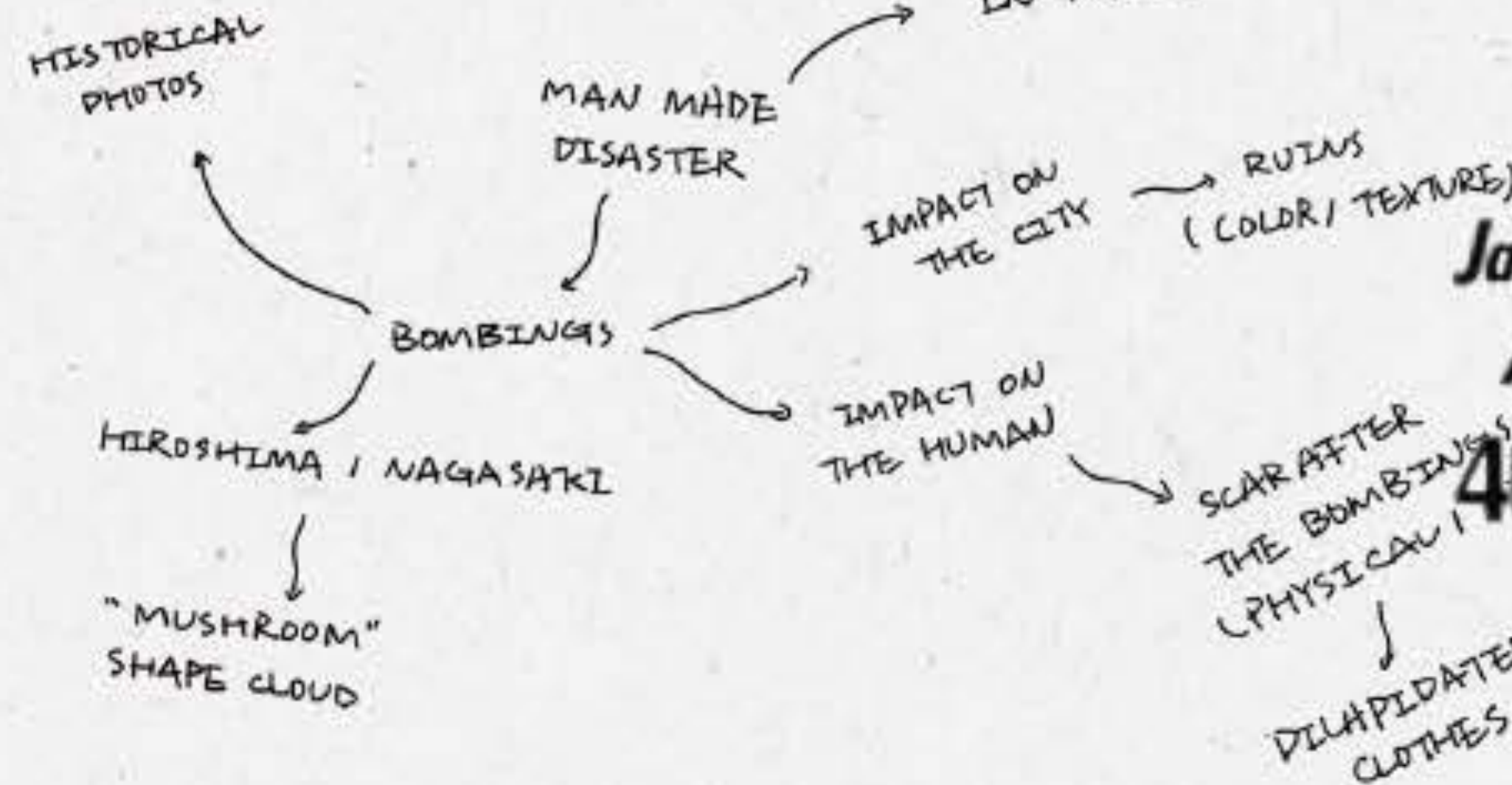


THE TEXTURE OF THE OIL SPILLS ON THE SURFACE

2 DAILY NEWS 2

ATOM BOMB HIT-A CITY VANISHED

Jap Seaport Went Up in Smoke And Flame, Witnesses Say
40,000-FT. DUST PYRE OVER HIROSHIMA



AFTER

THE

NIGHTMARE





INSPIRATION BOARD



DESTROYED BUILDING.

RESCUE TEAM.

TOOLS OF THE FIREMEN AT THE EARTHQUAKE

HISTORICAL PHOTOS
RUINS (COLOR / TEXTURE)
IMPACT ON THE CITY
BOMBINGS
IMPACT ON THE HUMAN
SCAR AFTER THE BOMBINGS (PHYSICAL / MENTAL)
DEPLUMPATED CLOTHES
HEROSHIMA / NAGASAKI
"MUSHROOM" SHAPE CLOUD



THERE ARE ALSO MANY POLICE

BASICALLY THE FIREMAN TO THE MAIN STAFFS TO SAVE PEOPLE AT THE EARTHQUAKE.

THEY ALWAYS CARRY WITH LOT OF TOOLS LIKE STRINGS OR BUCKLE ON THEIR GARMENTS

BELT

EMS ~~PILOT~~ PILOT Helicopter
Hazmat uniform. ~~PEPPER~~
Tactical. Suits ~~EXTREME~~
Driver (commercial)
Coast guard helicopter ~~PILOT~~
↓
Volcanic (Rescue swimmer)
Underwater recovery
Fly doctors
sea pilot.



Zip fastening

For the people who get in trouble on the ocean, there is another rescue team called coast guard. They usually searching for the issue happening on the ocean by taking helicopter. In that case most of the member of the coast guard team always in a kind of pilot uniform with a bright obvious color.



COAST GUARD

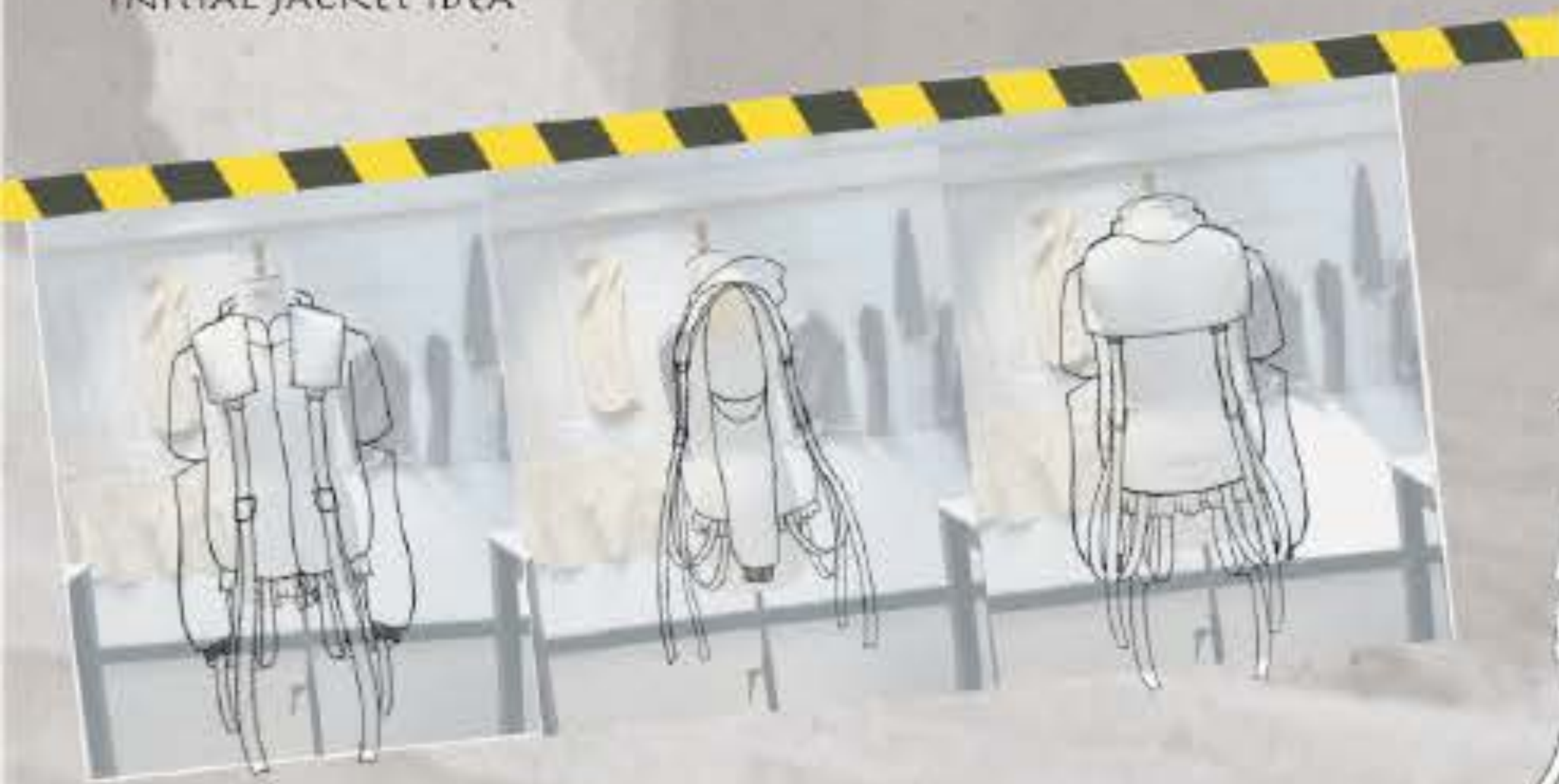


Rescue pilot

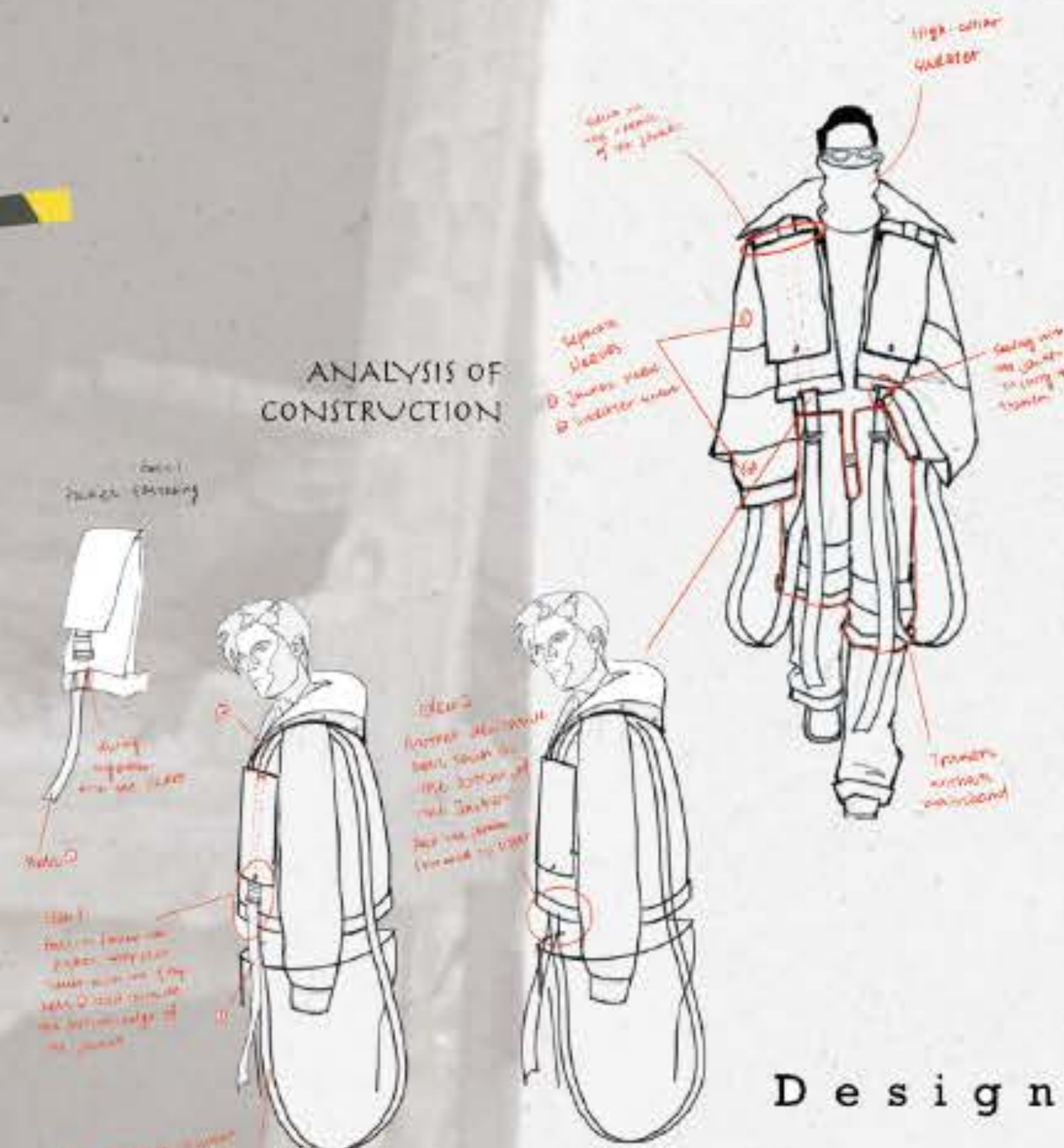


AFTER THE NIGHTMARE

INITIAL JACKET IDEA



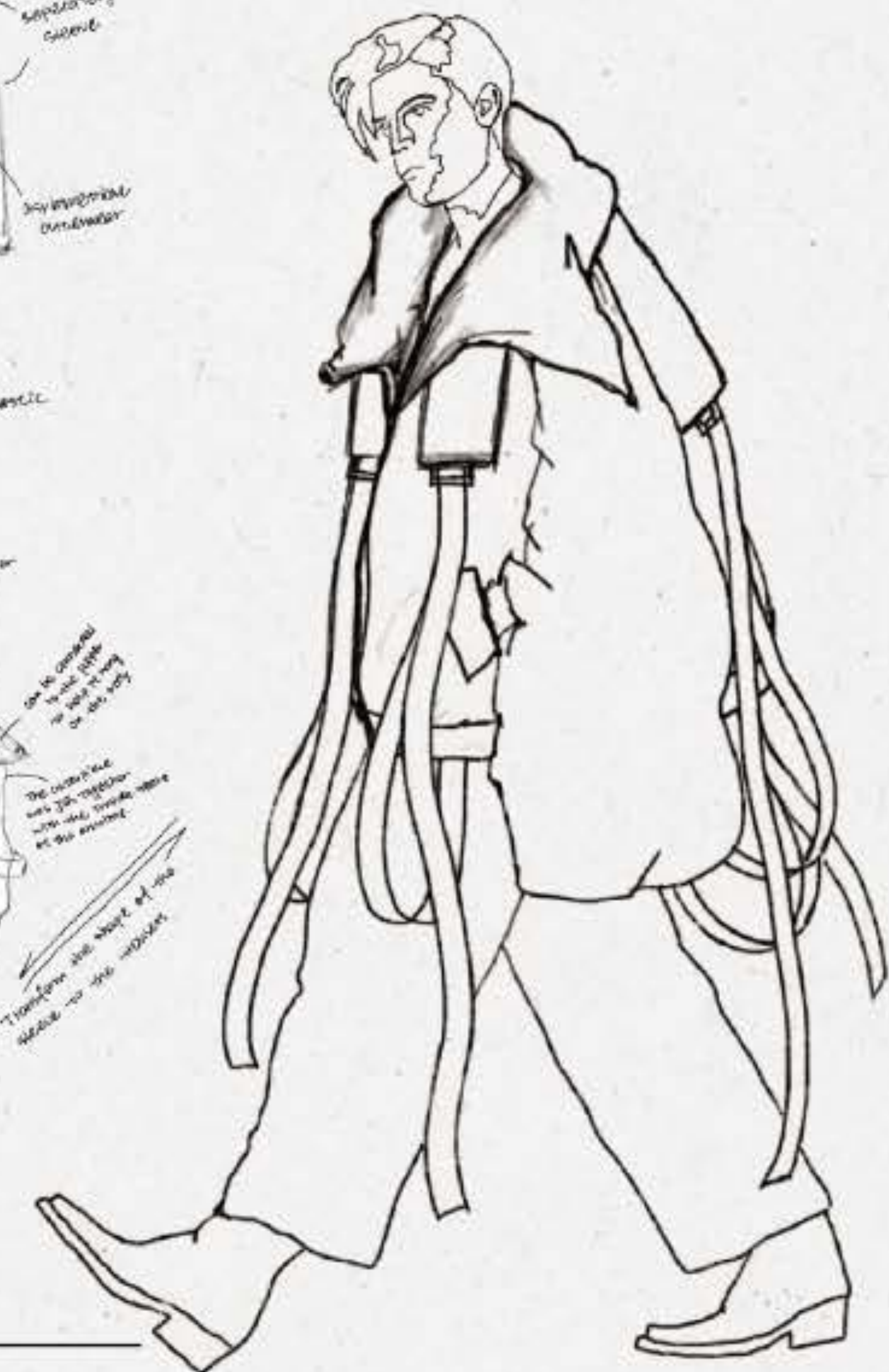
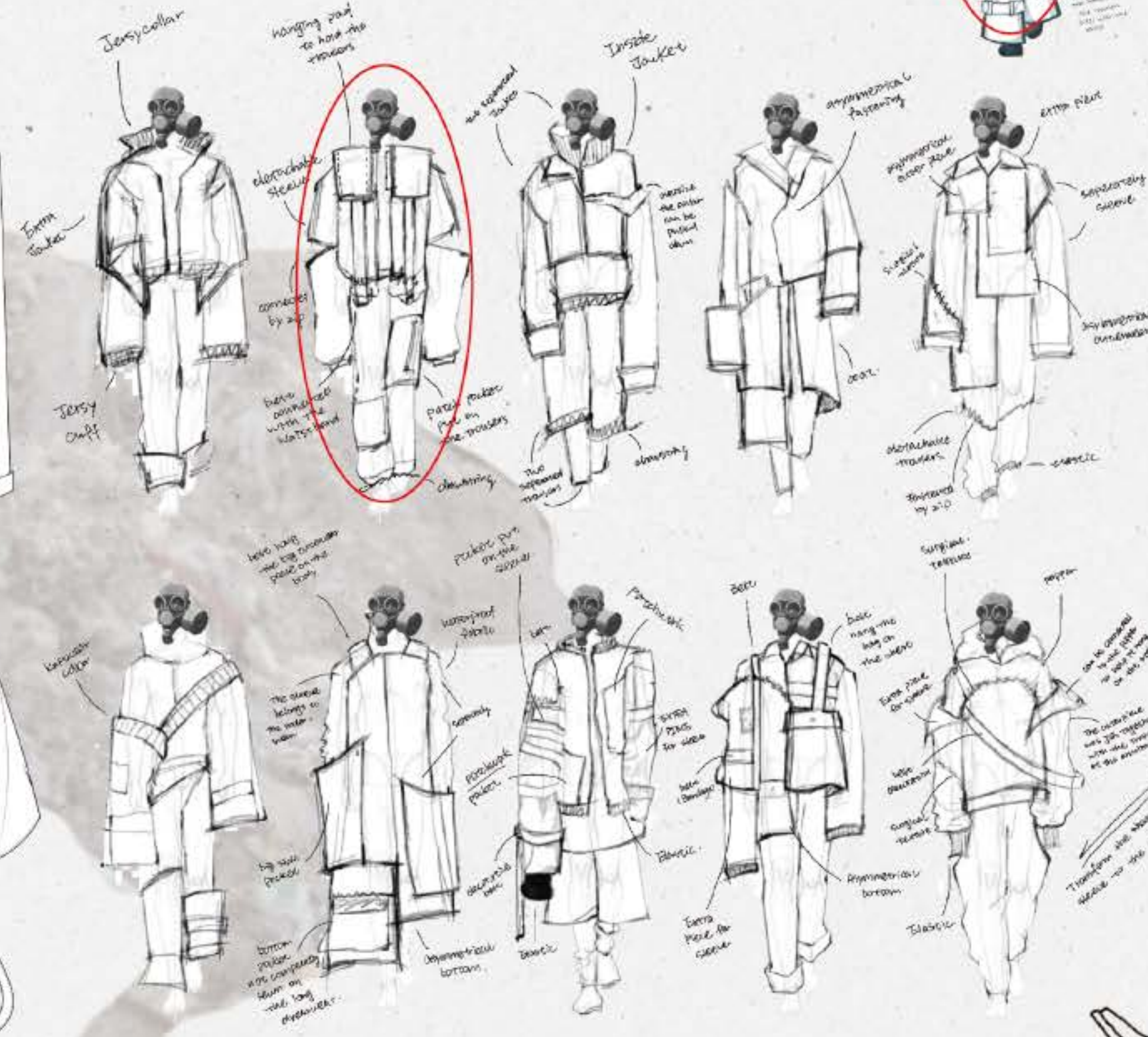
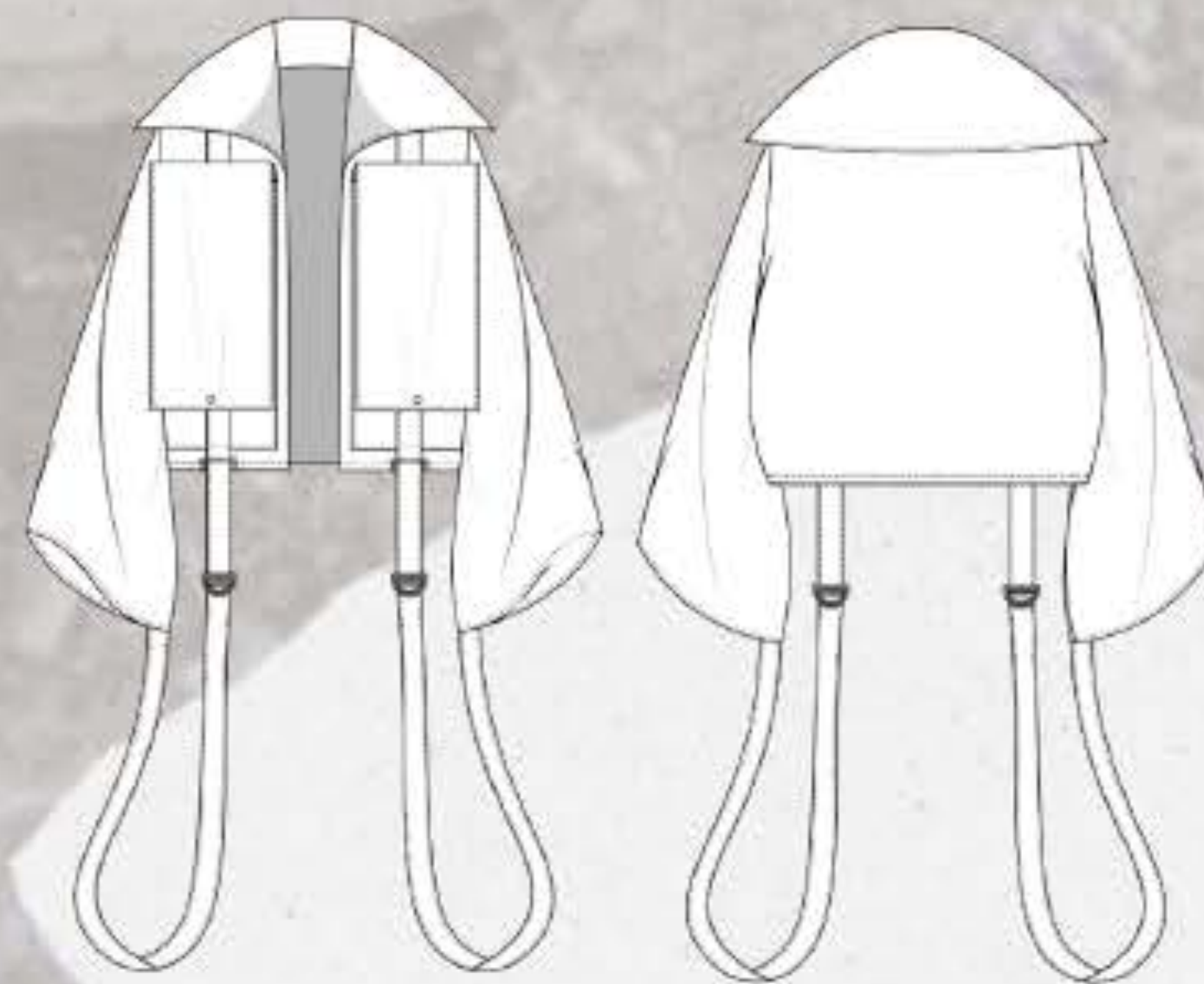
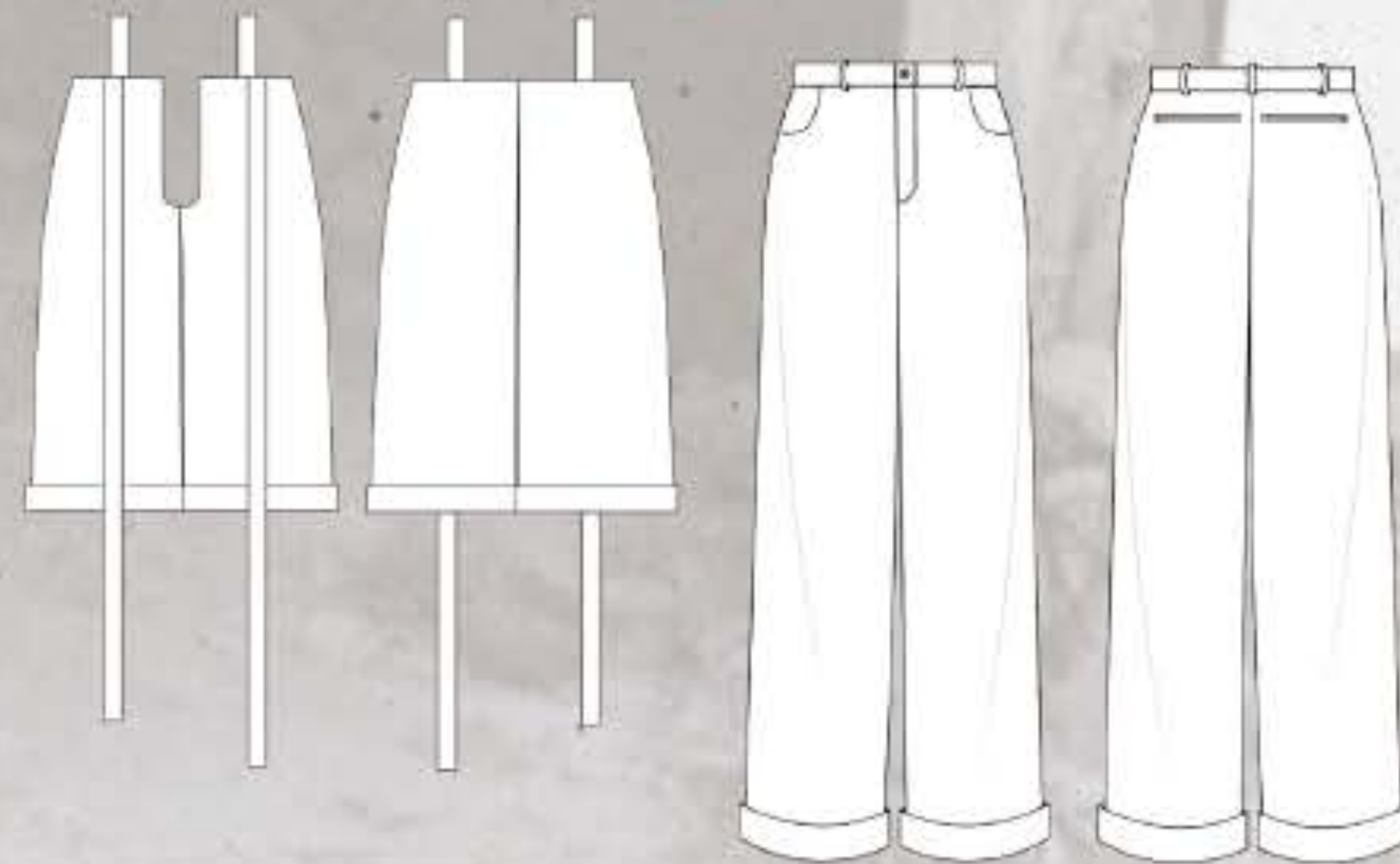
OUTFIT 1

ANALYSIS OF
CONSTRUCTION

IMAGINARY BEINGS & INITIAL SKETCHES

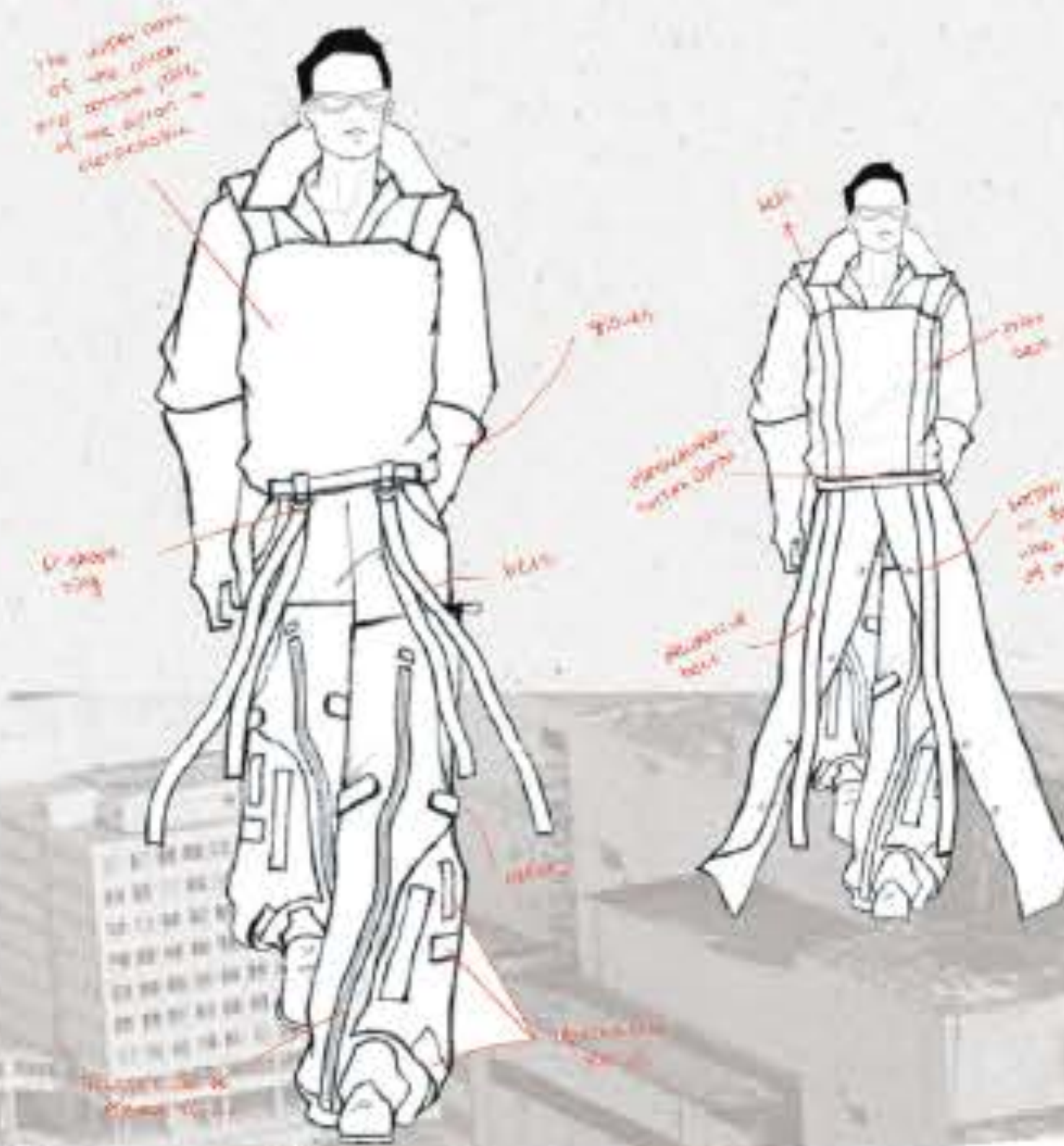


Design development

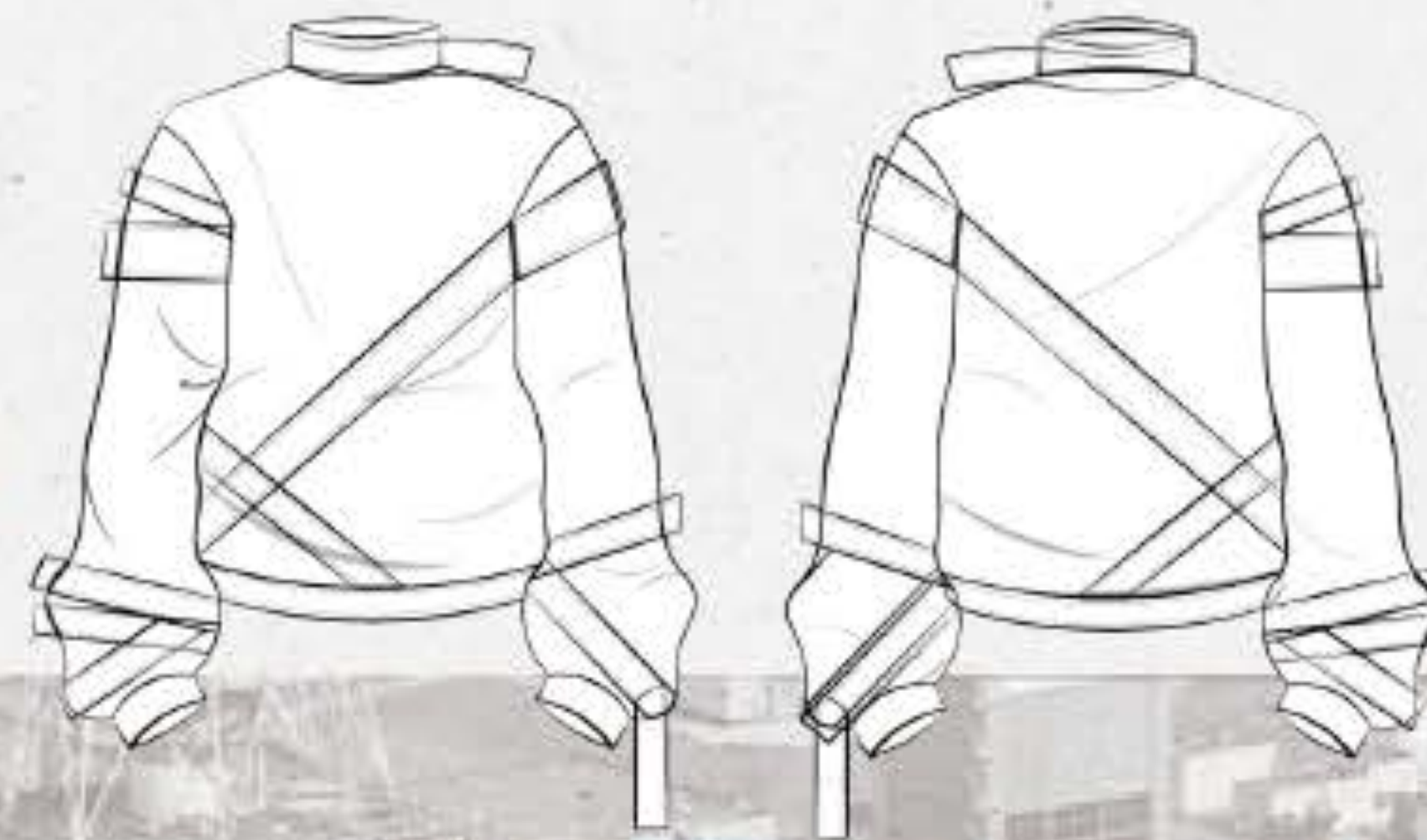


DESIGN DEVELOPMENT

OUTFIT 2



SWEATSHIRT COLLAR DEVELOPMENT



GARMENT DETAILS



The inspiration of the belts on the sweatshirt comes from the main element that related to my FMP concept. And the Velcro was added on the belt to hold the position of the belt.



For this step, I did the body development of the sweatshirt of the second outfit. And then developing the shape of the sweatshirt sleeve, also adding it to the body. Putting the 1st toile of the sweatshirt on the human body to see if it fits.



On this stage, I developed the shape of the collar, prepare for developing the belt on the collar. Firstly I pinned the pattern of the belt to identify the position of the velcro on the belt. Then I made the 2nd toile for the sweatshirt with belts put on the collar and the front body.



FINAL GARMENT



PAPER EXPERIMENT

FINAL TOILE OF
DENIM JACKET



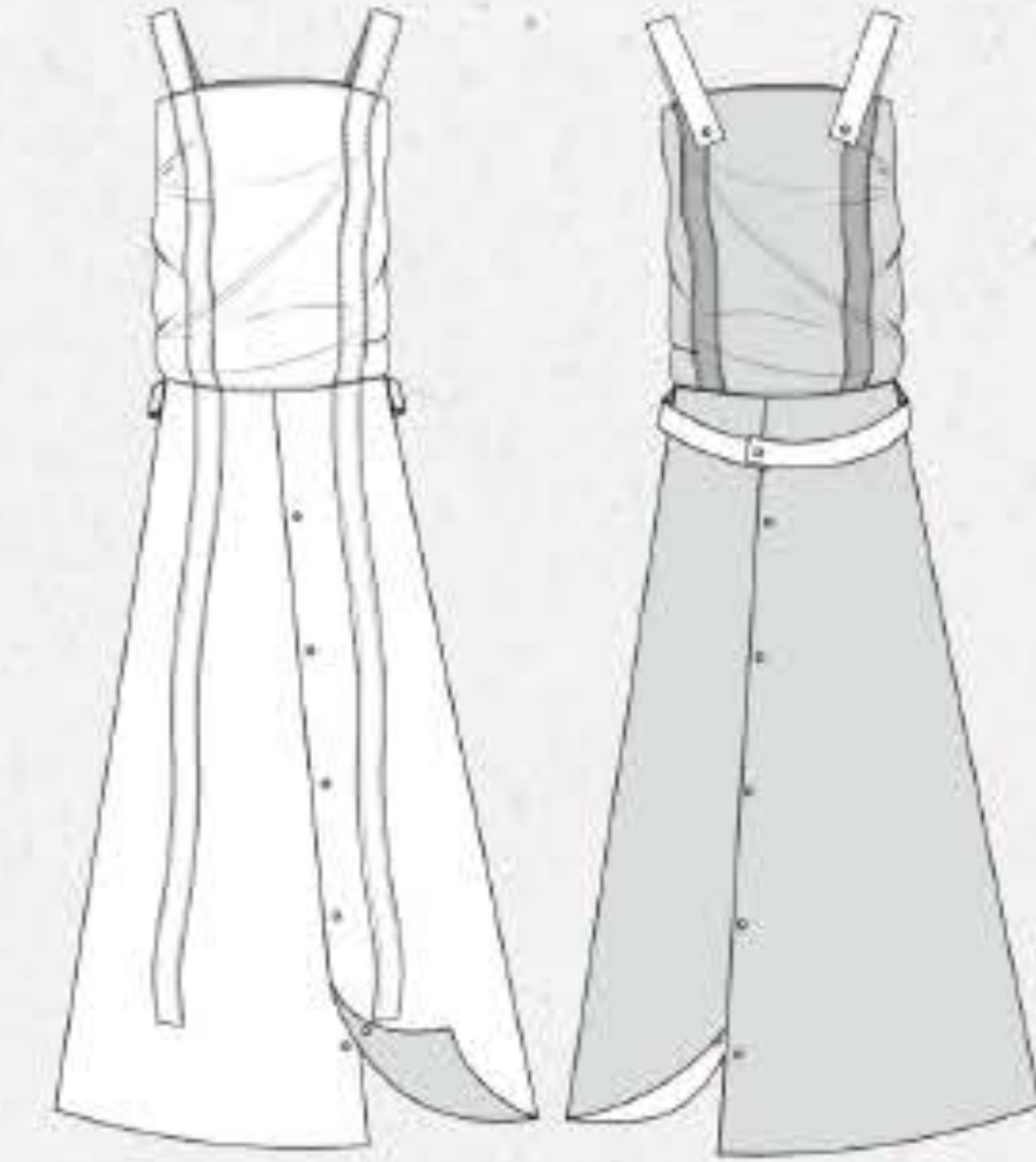
FINAL GARMENT



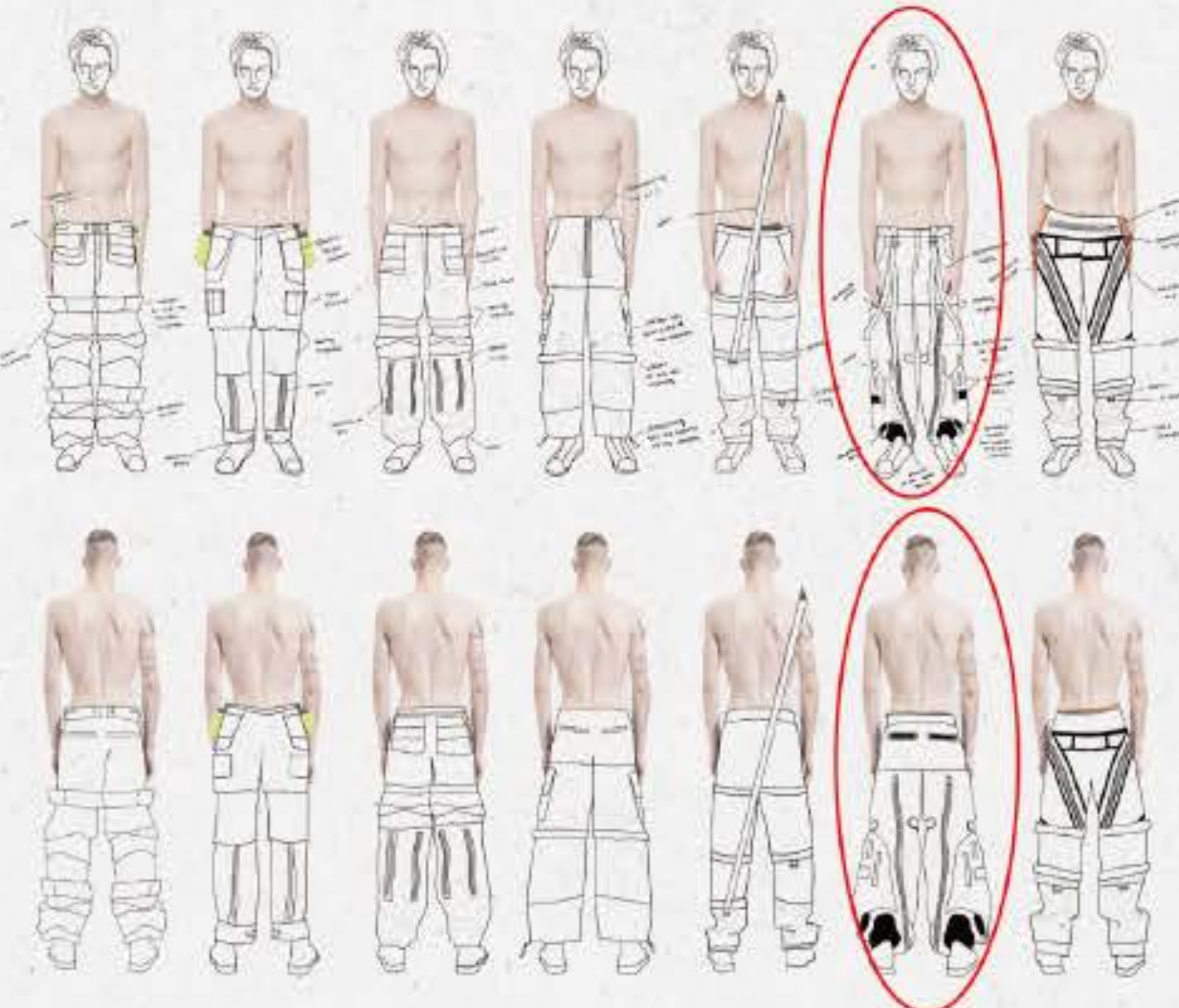
Protective apron



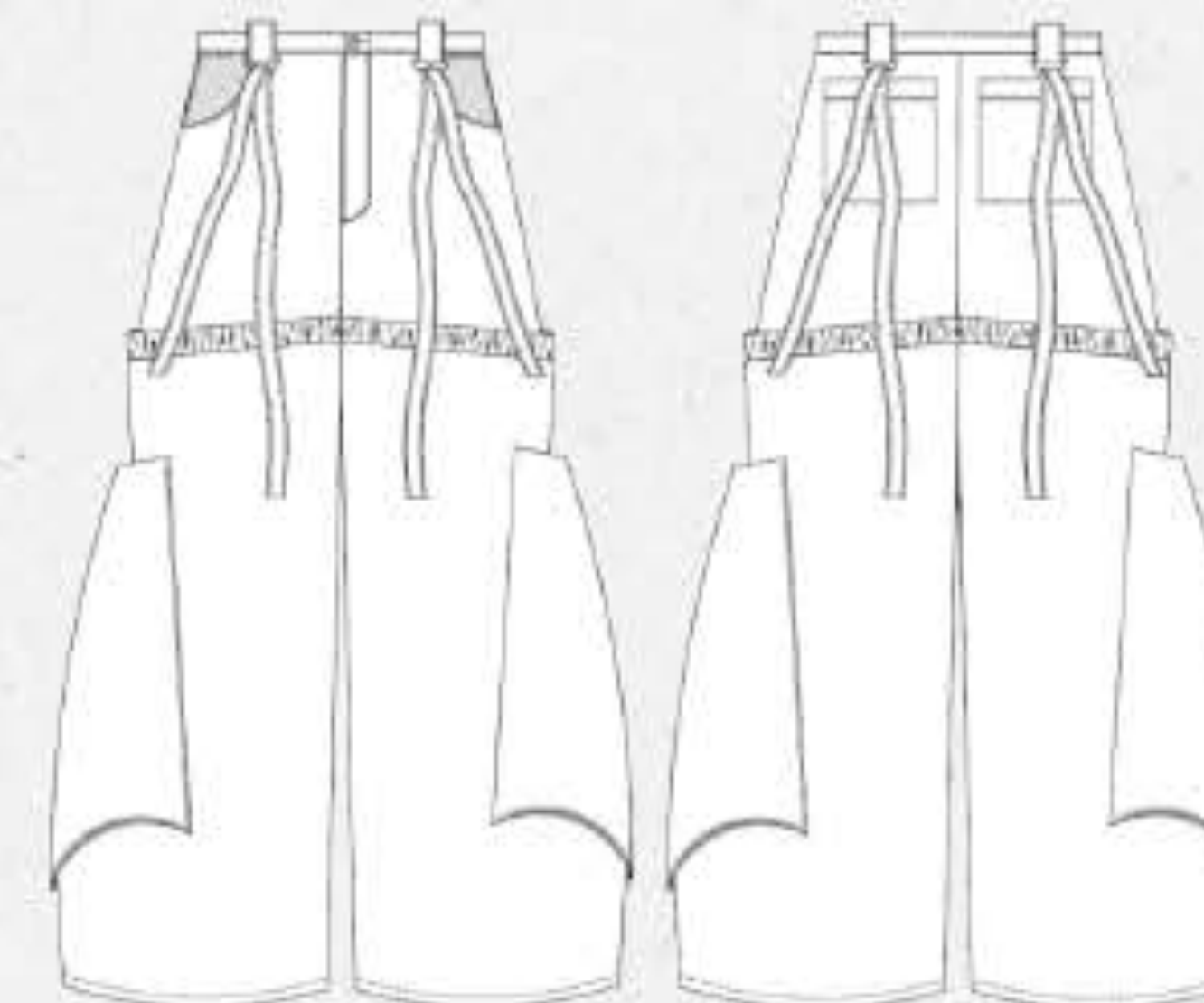
APRON PIECE



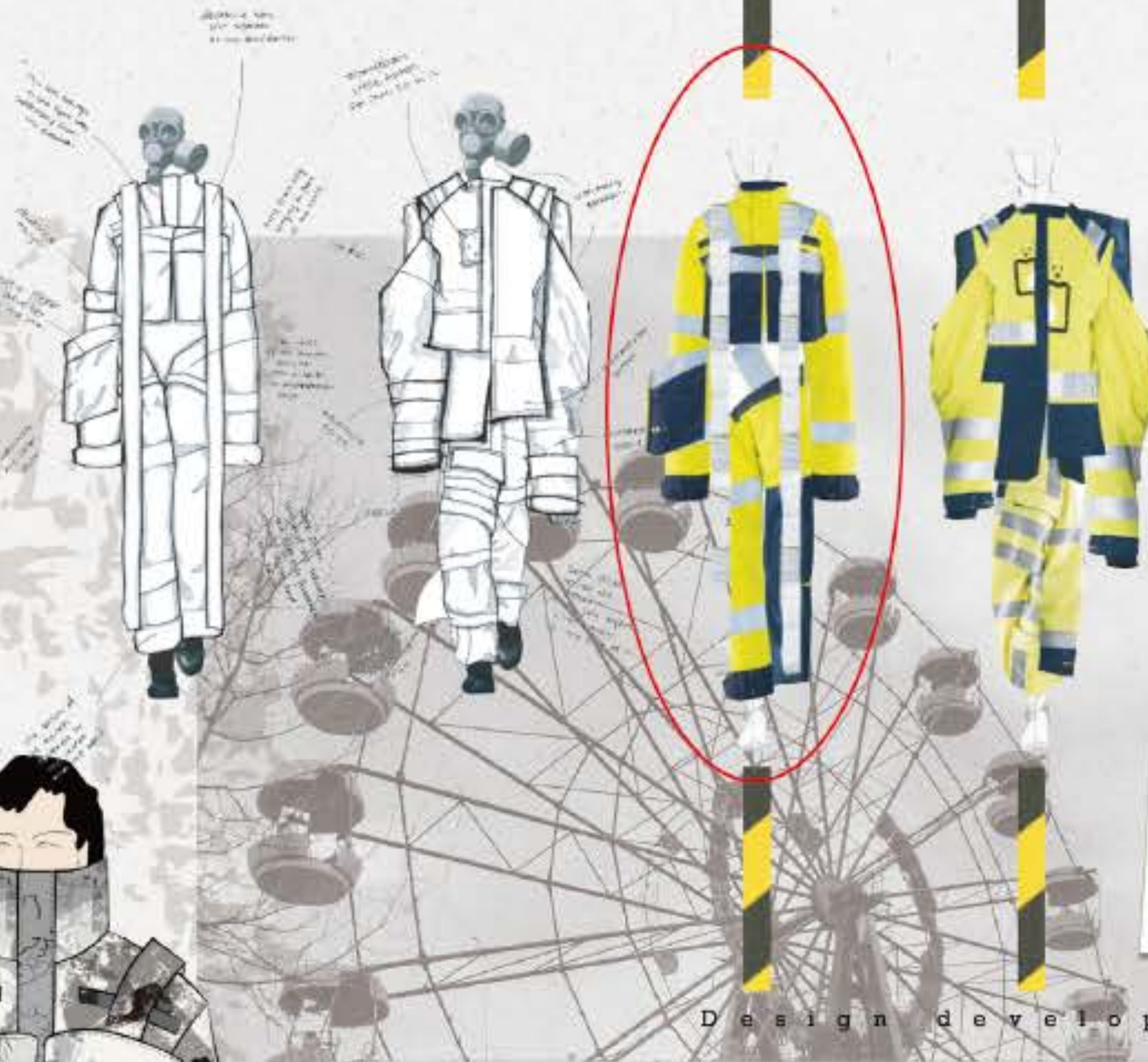
FINAL OUTFIT



TROUSERS SKETCHES



INITIAL IDEAS SKETCHES



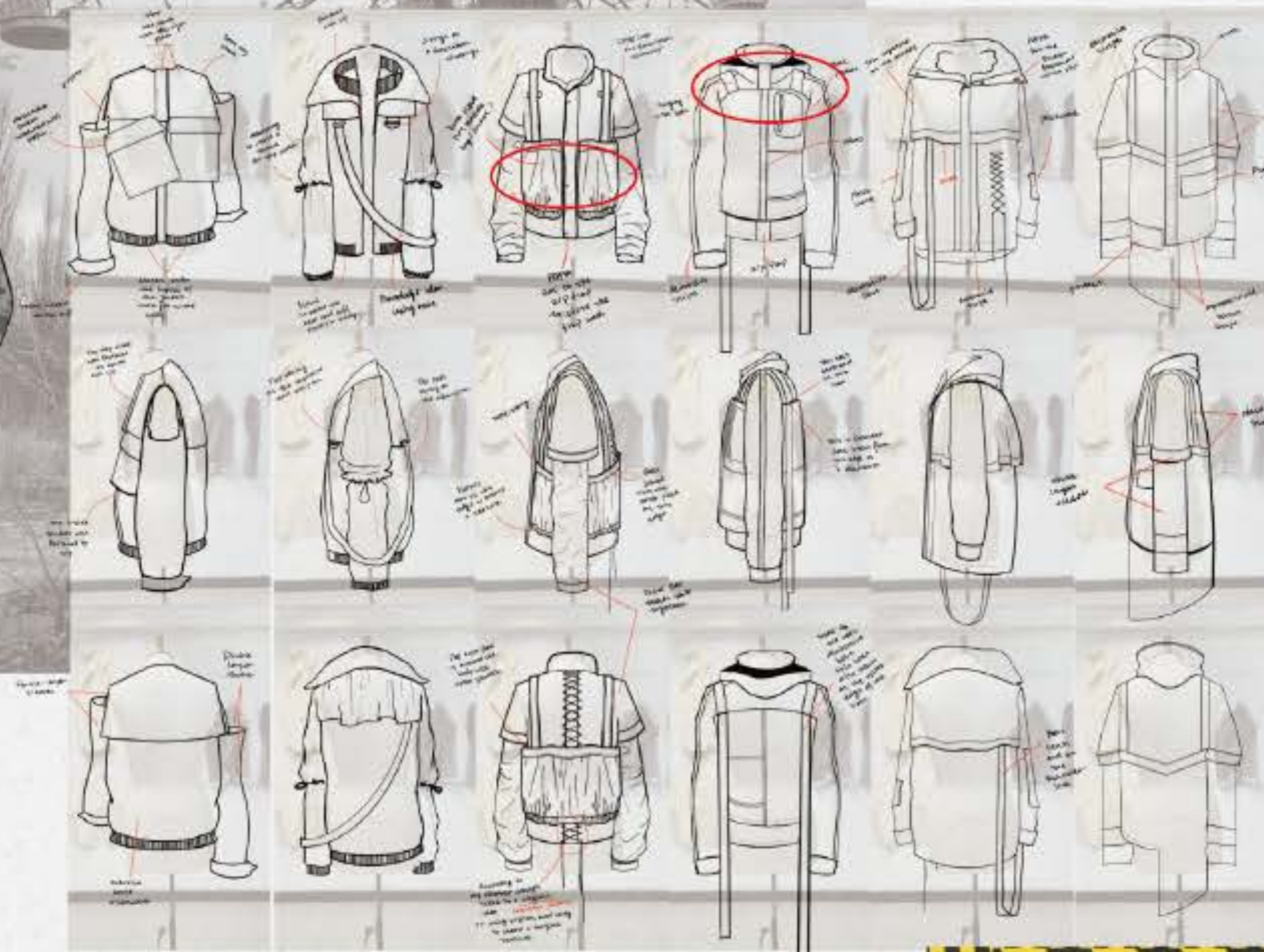
DEVELOPMENT OF THE JACKET



FINAL VERSION OF THE JACKET



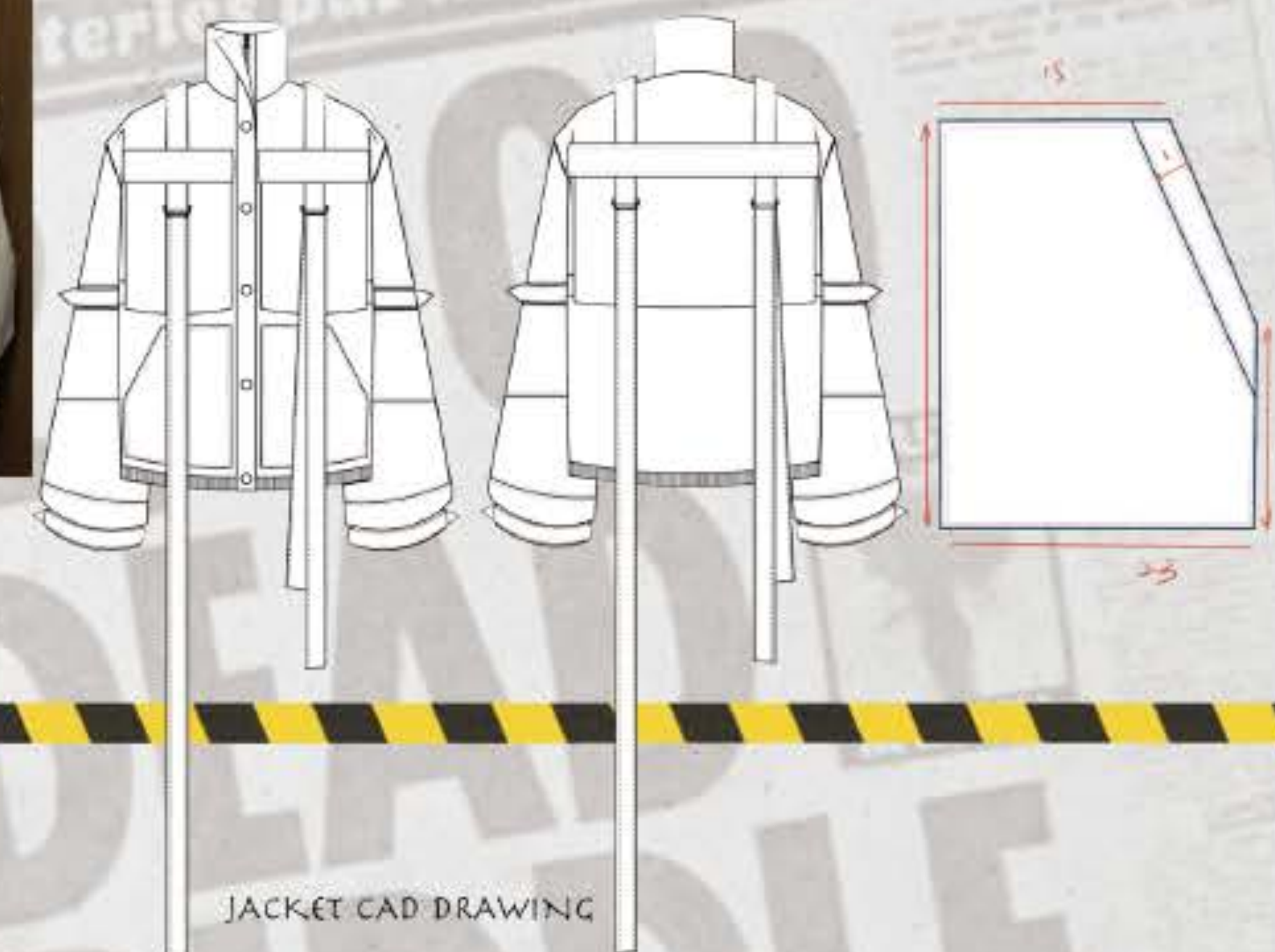
Design development



JACKET DEVELOPMENT



FINAL TOILE OF THE JACKET



JACKET CAD DRAWING

AFTER THE NIGHTMARE

DETAILS OF THE SLEEVE



SLEEVE DEVELOPMENT

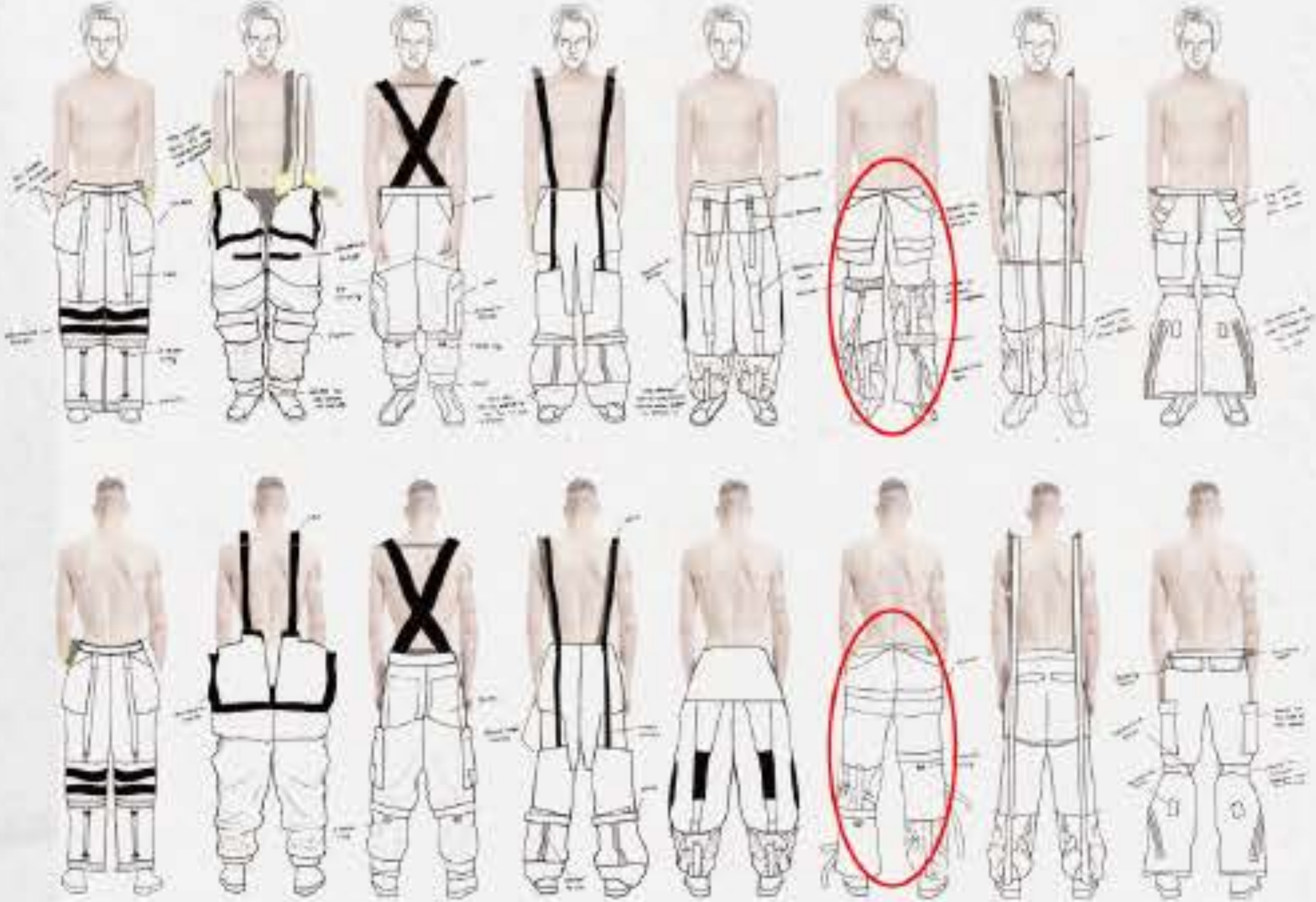


CUFF DEVELOPMENT

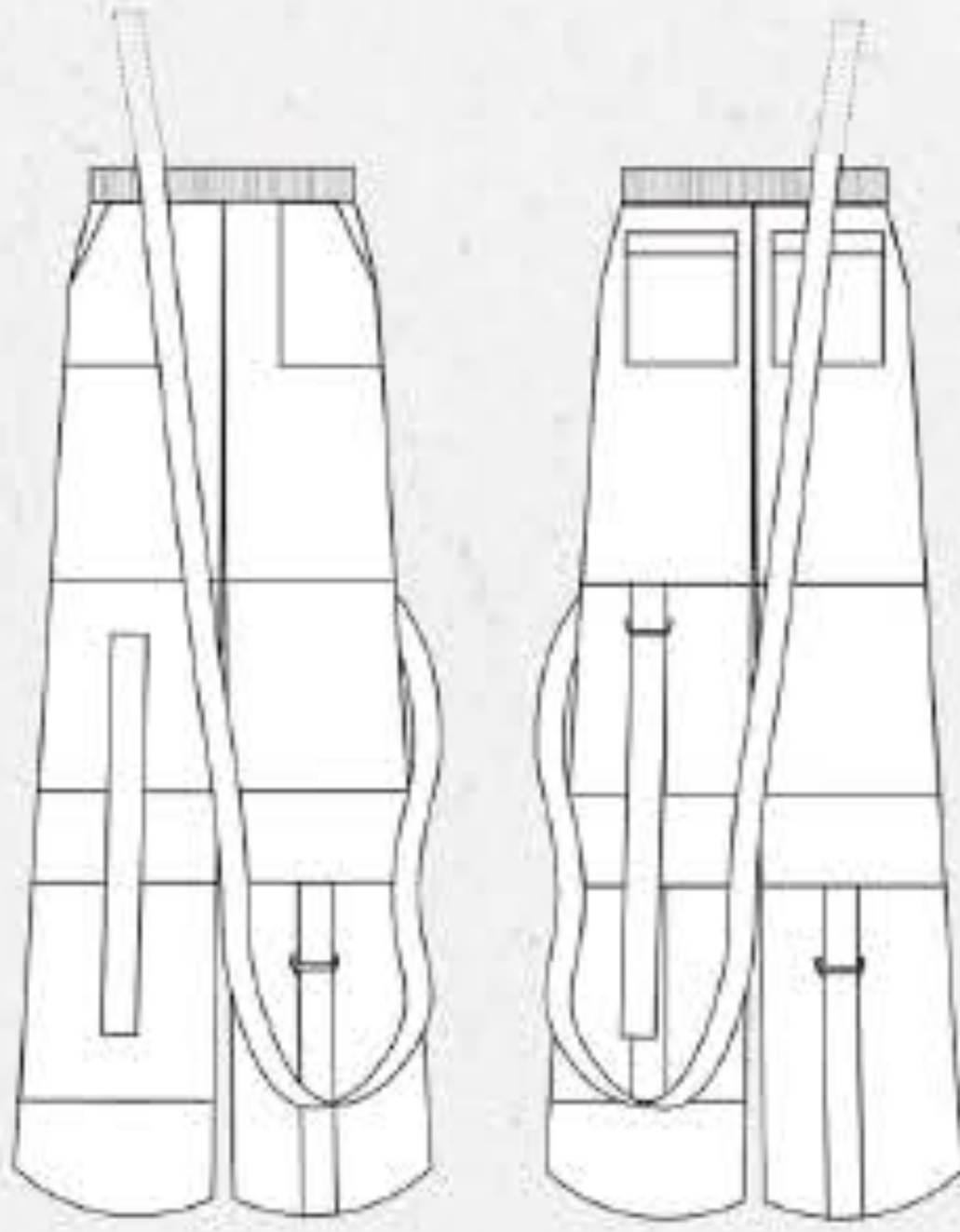
FINAL VERSION OF THE SLEEVE



TROUSERS DEVELOPMENT



TROUSERS CAD DRAWING



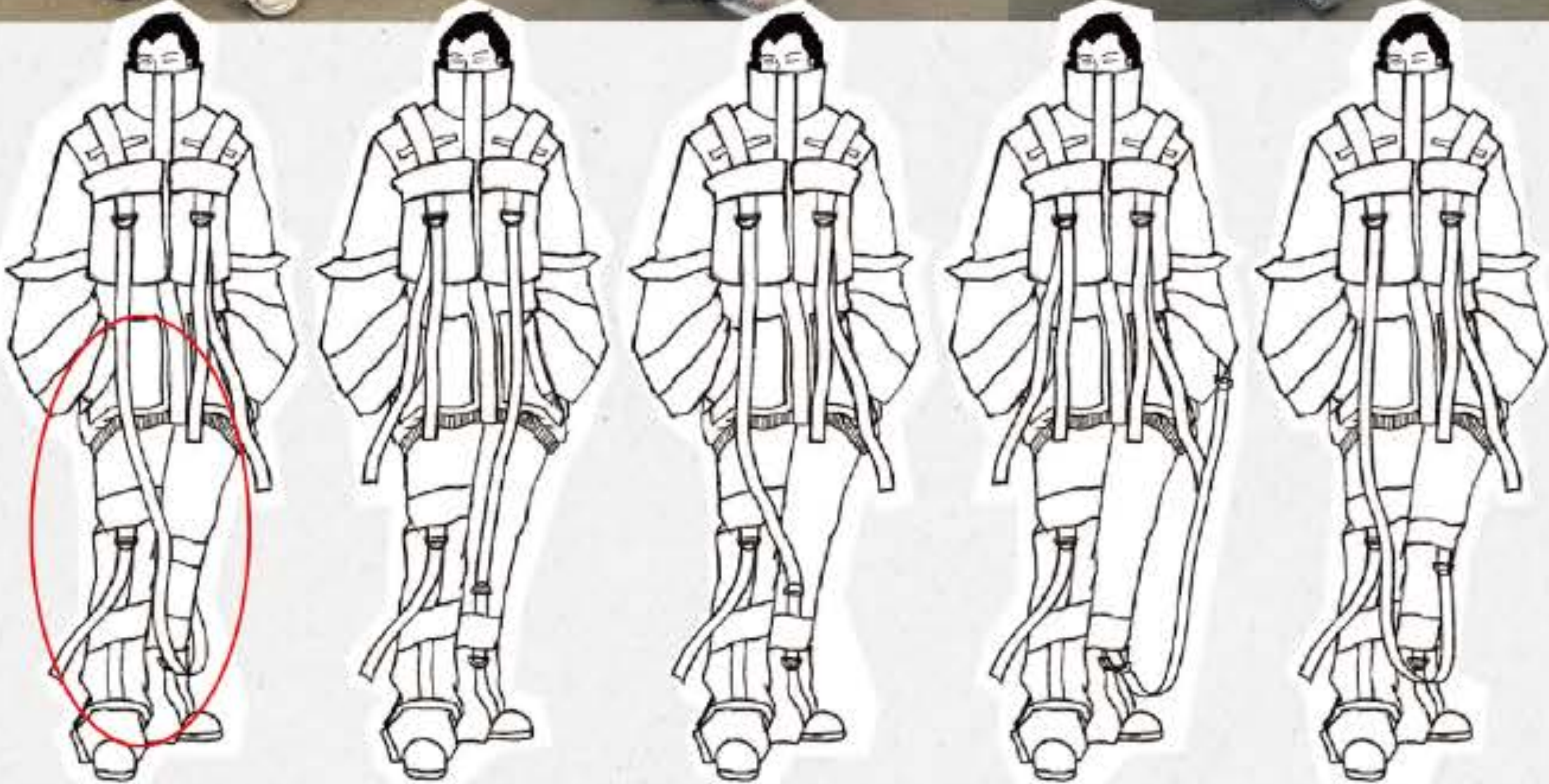
FINAL TOILE



FINAL OUTFIT

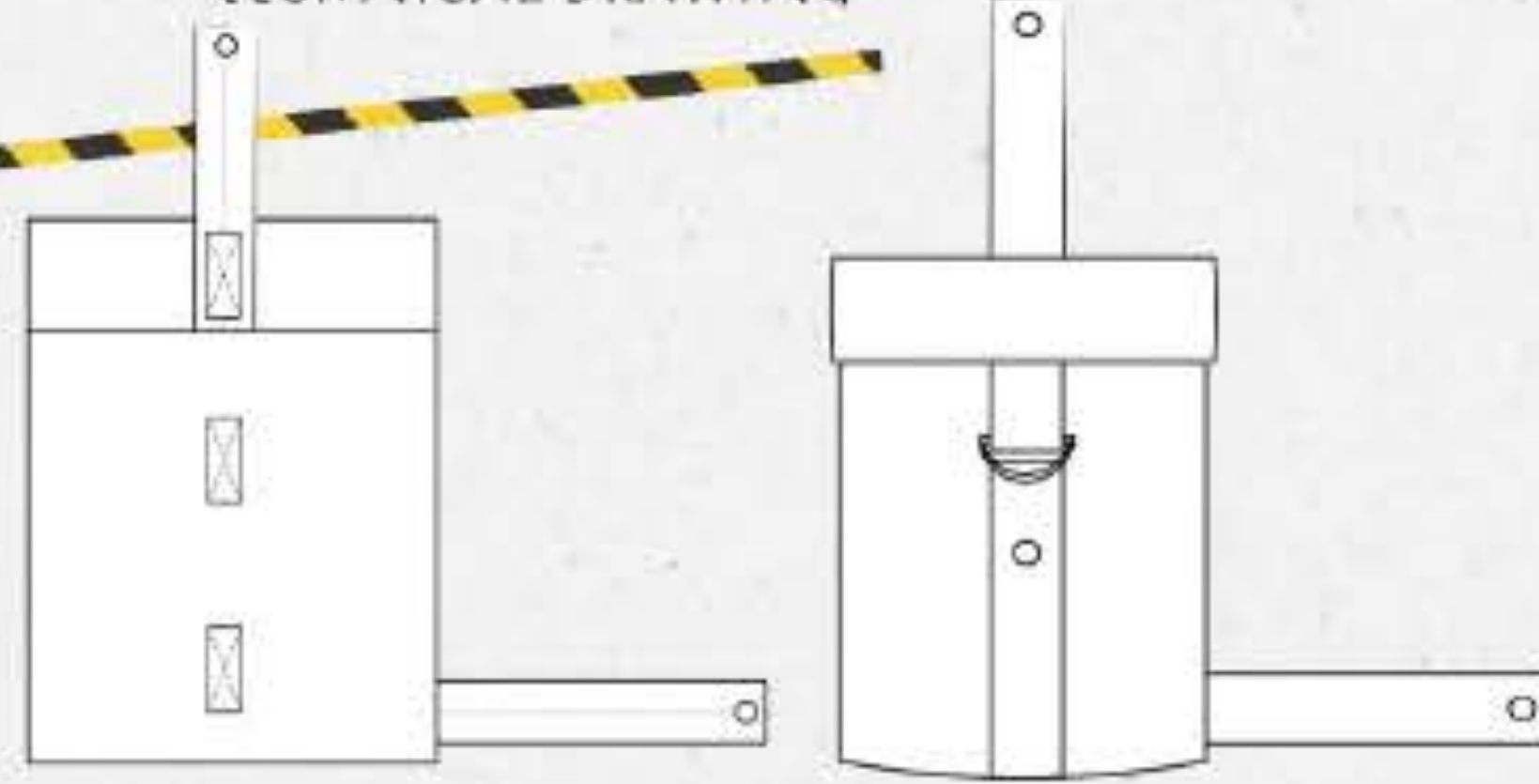


BELT EXPERIMENT



DESIGN DEVELOPMENT

TECHNICAL DRAWING



The shape of the pocket is like

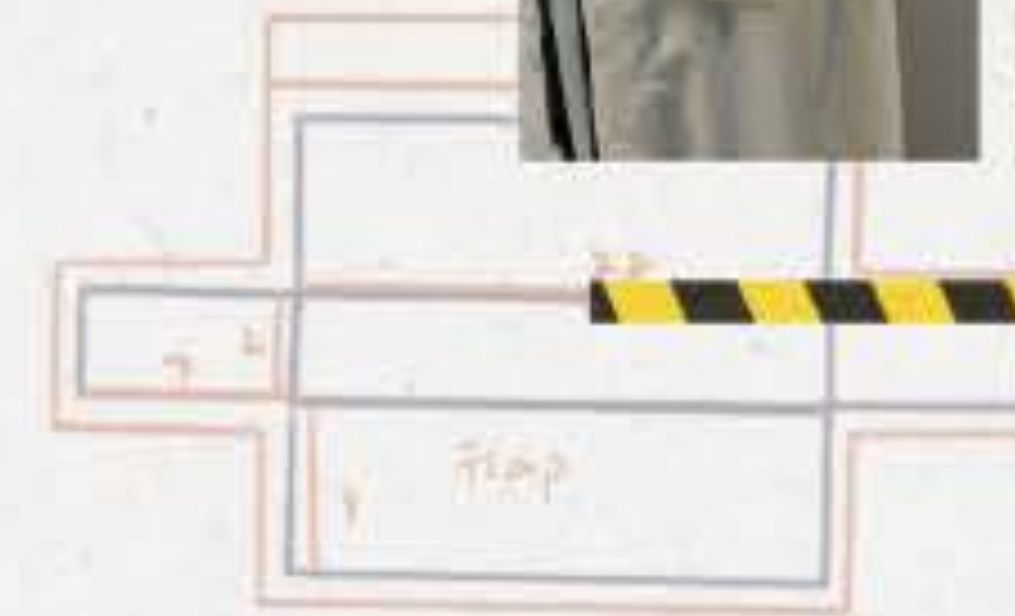


3D DEVELOPMENT OF THE BAG

Body patterns



Pocket



MAKING IN THE FINAL FABRIC

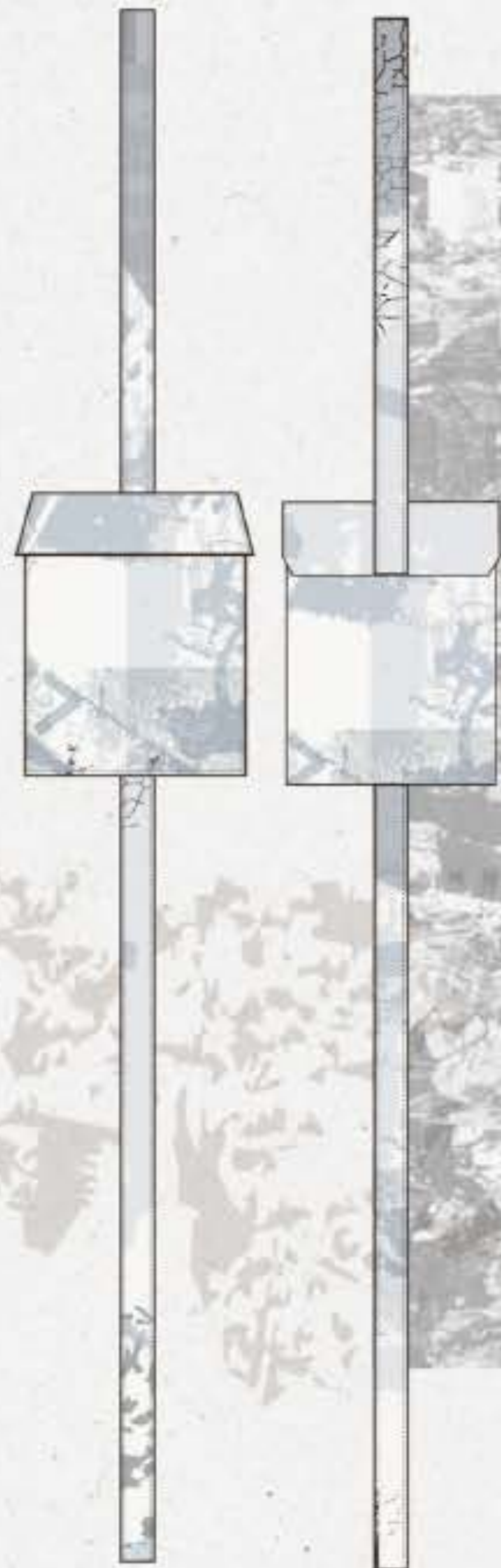


FINAL VERSION



After the buildings were destroyed by the disaster. Many people became homeless people. Families huddle together on mattresses and sheets wrestled from the wreckage of their home. People take all of their remaining belongings to move from their home that destroyed by the disaster.

ACCESSORY



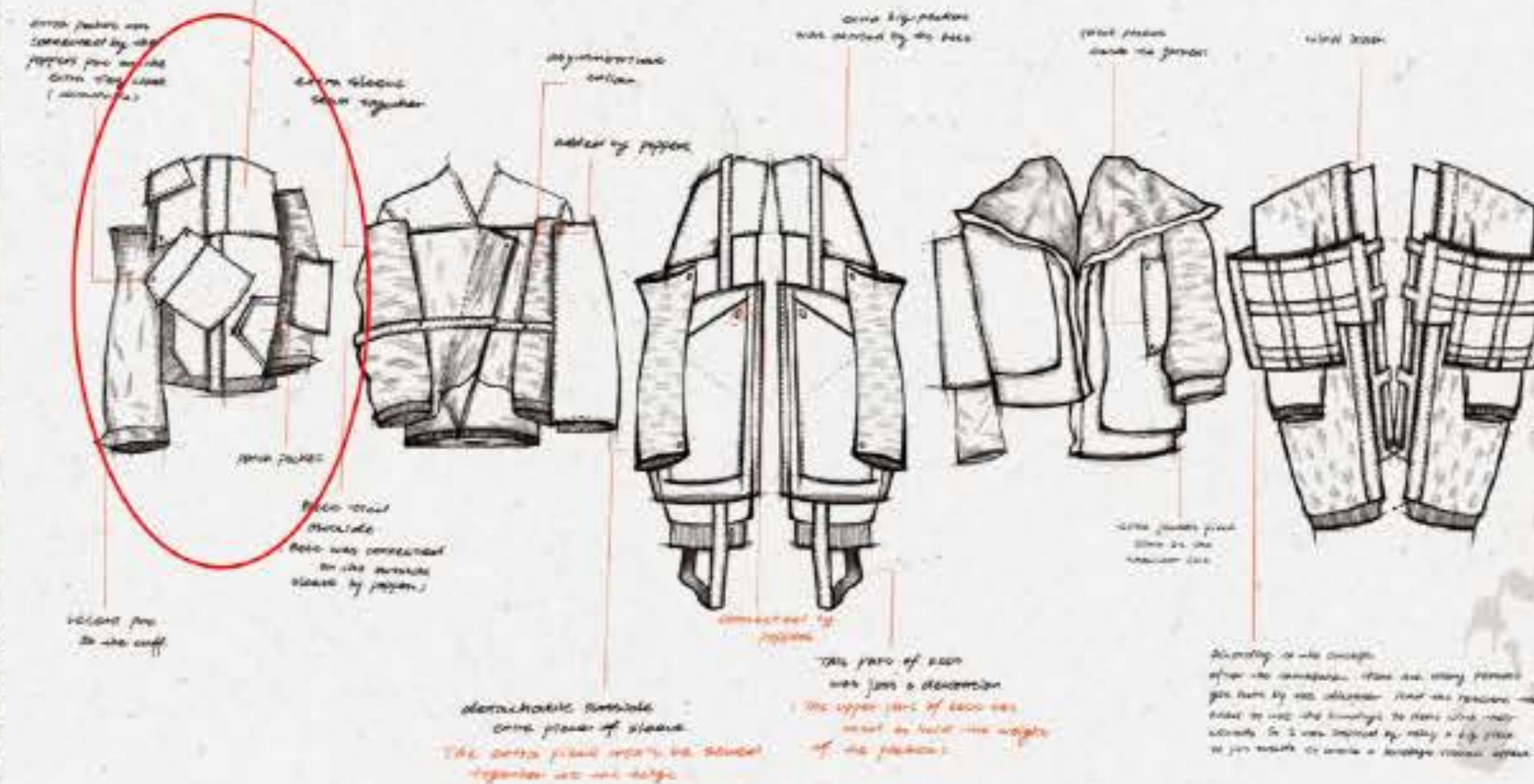
INTERIOR VIEW



FRONT&BACK



SP-OVERSIZE MILITARY JACKET

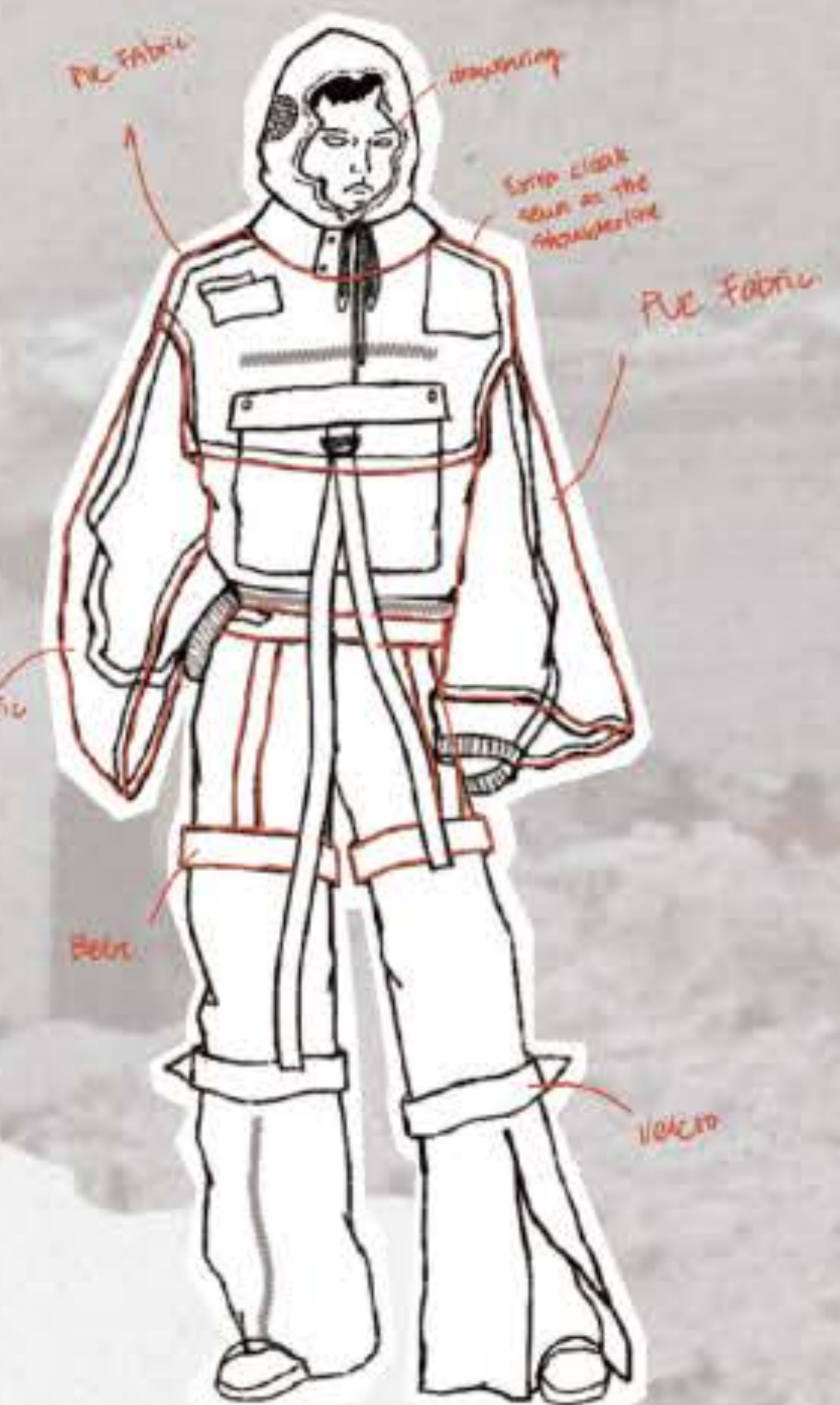




RESCUE DIVERS



OUTFIT 6



PROTECTIVE SUIT

Disasters
happened
in the past
Chernobyl nuclear
disaster

FINAL LINE-UP



COLOR PALATTE INSPIRATION
COLORLESS & RADIATIONAL



RUINS AFTER THE
DISASTER



FINAL LINE-UP&FABRIC