

PLAYFUL  
REVERSIBLE  
IDENTITY  
NOSTALGIA  
GLITCH  
CONFLICTING

“TWO FACED”



This collection examines a journey of self-discovery as I begin to forge my own identity away from my identical twin for the first time in our lives. 'Identity' being a key theoretical theme I explored throughout my dissertation were I examined the handbag as a social marker holder of multifaceted meaning as it becomes an extension of the body. While most people can take solace in the fact that they are unique and one of a kind, twins do not have that because fundamentally we are a single entity split between two bodies. Throughout my contextual findings within arts and culture I discovered that twins provided artists with the challenge of capturing uncanny **symmetry, sameness, and nuanced difference**, but for us, our differences are obvious. For this reason, the collection will explore the multifaceted emotions I've experienced such as confusion and a newfound sense of freedom but will also celebrate the nostalgia and joy of being an identical twin as I look back to childhood imagery for inspiration. Fusing chaotic, textural fabrics utilising deadstock yarns and fabric off-cuts in weave-in and e-wrap stitches with more refined and calculated fine-gauge rib techniques in contrasting colours will be seen throughout the collection. An interesting reversible quality is visible within each individually knitted fabric to emphasise the 'Two Faced' concept further.

"My sister and I, you will recollect, were twins, and you know how subtle are the links which bind **two souls** which are so closely allied"

(Arthur Conan Doyle, 1982)



COLLECTION  
CONCEPT



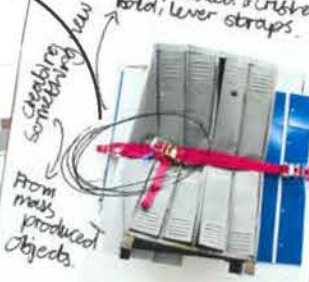
COLOUR & MATERIALS



PRIMARY & CONTEXTUAL RESEARCH

Contextual findings

metal lockers manipulated & crushed fold, lever straps.



second-hand knit, baby clothes -> mini bodies? deconstructed & reconstructed



melting, meander, hallucinogenic, glitch



stretcher/semi-transparent fabrics fused with darned-like weave-in yarns.



strong mass of colours.



subtle spaces, overlaps.

bright, bold colours with softer neutral neutrals.

oversized, raggy silhouette. Linear repeated knit techniques in-lay? between various gauges.



lines pool, pools of life? never straight.



calming but chaotic

quote relevant to my project theme: mood & message

symbolic of identity of concepts

organic, soft fused with constrained & layered tensions.

stark contrast between neutral background with skeletal pops of bold colourings.

techniques: weaving-in, interst.

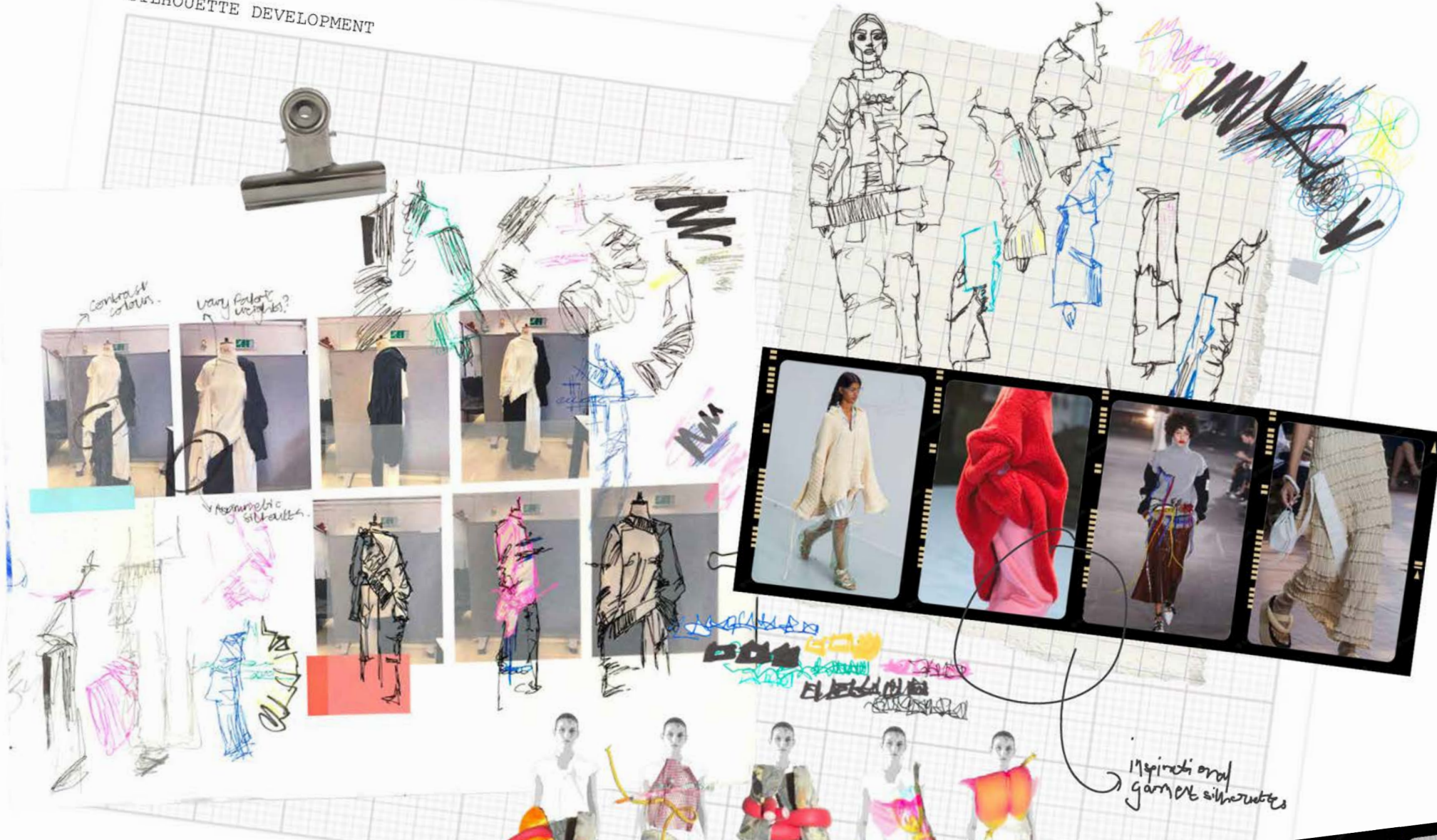
TEAR US APART



own photograph



SILHOUETTE DEVELOPMENT



Inspiration and garment silhouettes



DRAPING SECOND-HAND GARMENTS WITH KNITTED FABRICS



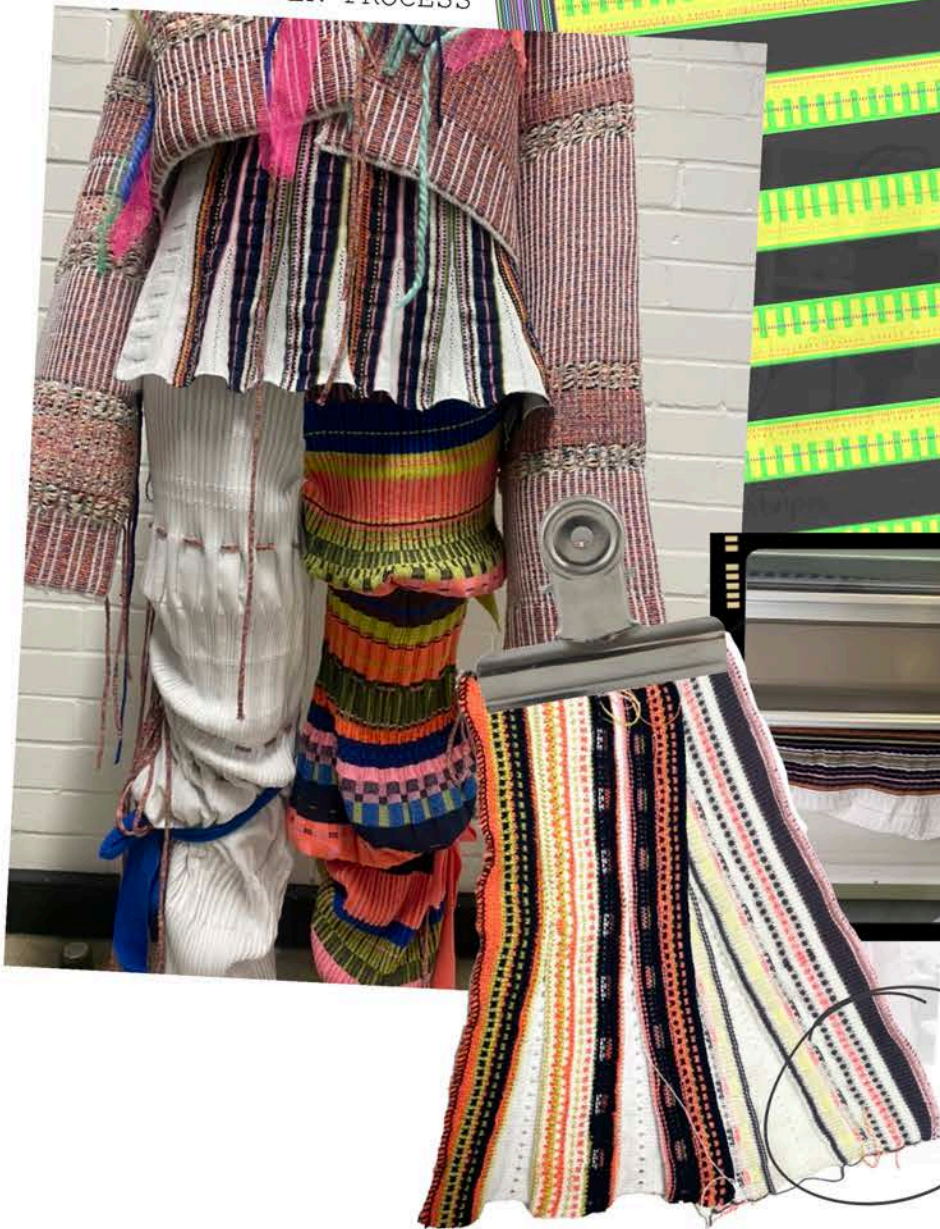
KNITTED FABRIC DEVELOPMENTS



WEAVE-IN JUMPER PLAN

shirring programme

PARTIAL KNIT JUMPER PROCESS



initial duplicated fabric development

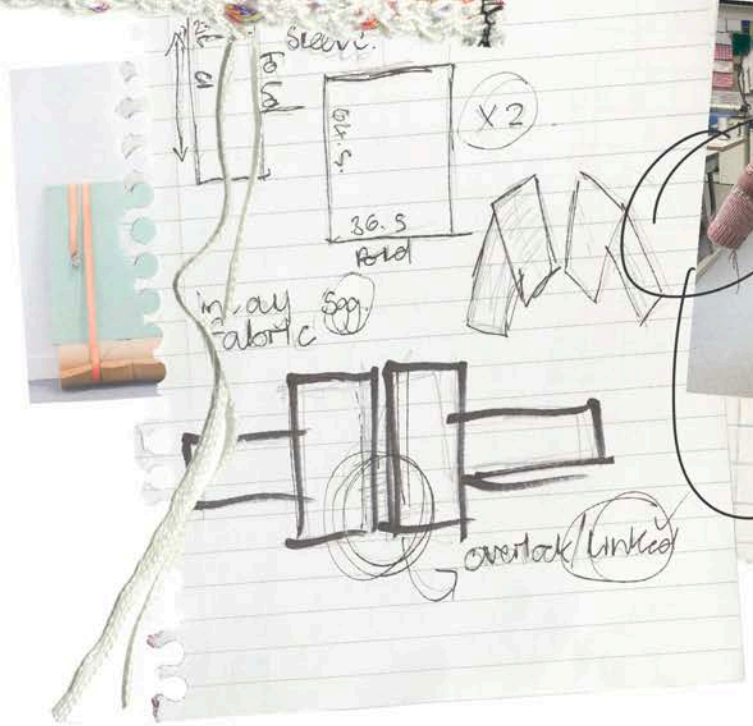
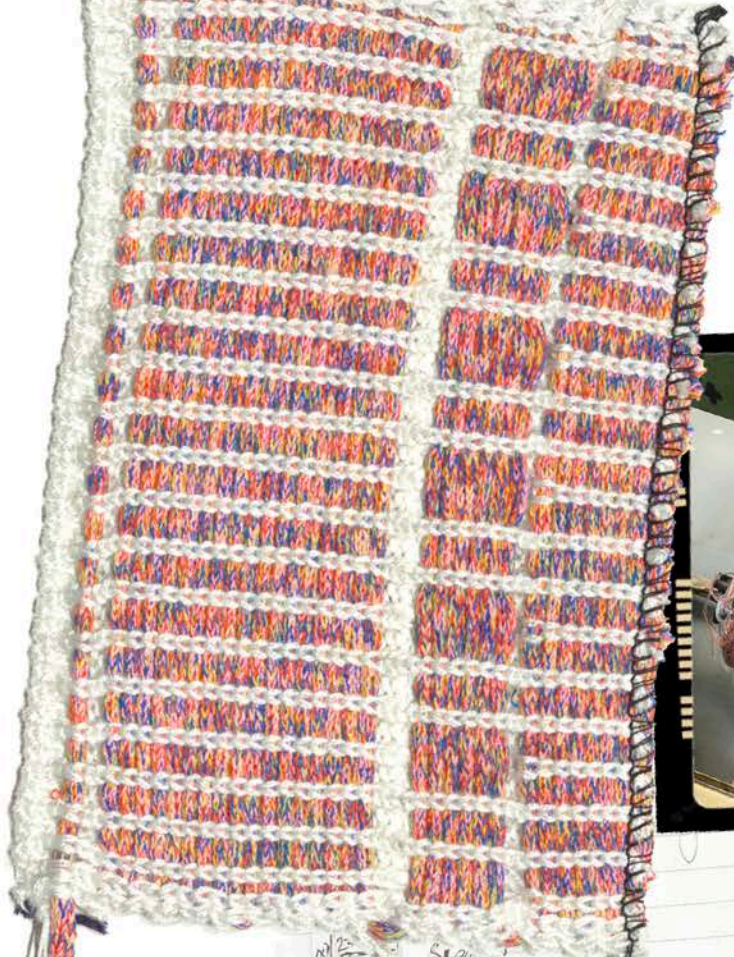




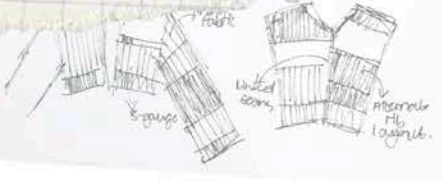


DESIGN DEVELOPMENT OF OVERSIZE TROUSERS

OVERSIZE JACKET DEVELOPMENT



evaluating shape





50g ply mock garment

12g pleat

12g pleat

12g pleat

standard garment c-wmp

12g mock pleat fabric

12g power rib knit, rib, c-wmp

Cherry domestic & waste in

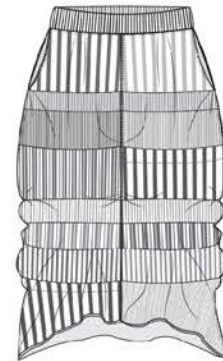
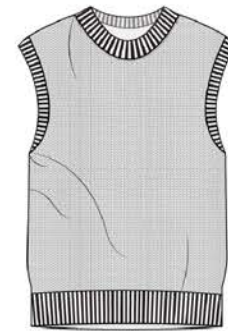
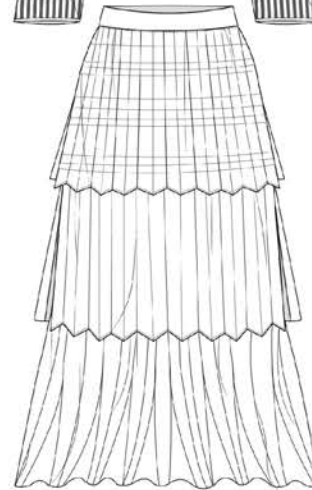
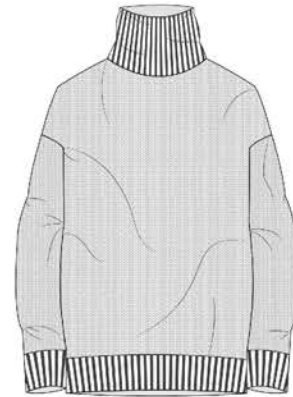
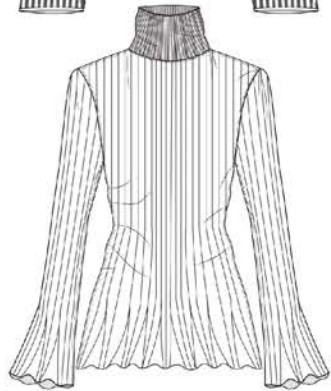
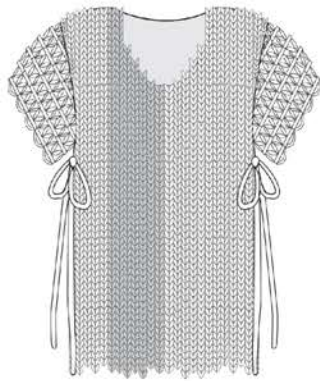
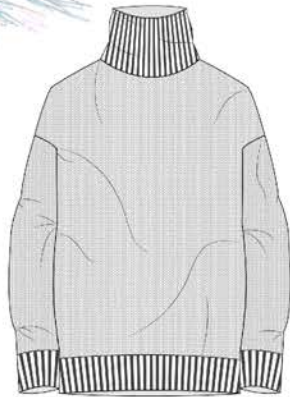
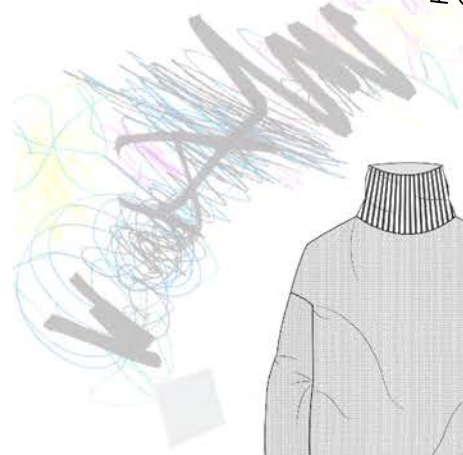
12g pleat

standard garment c-wmp

COLLECTION LINE-UP



COLLECTION  
SPECIFICATION



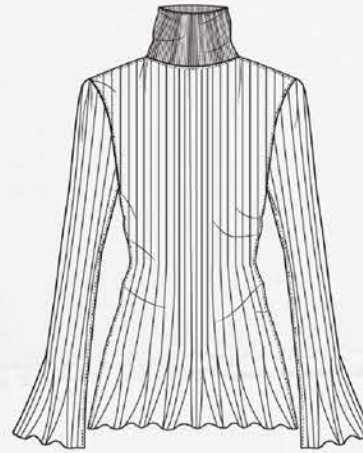
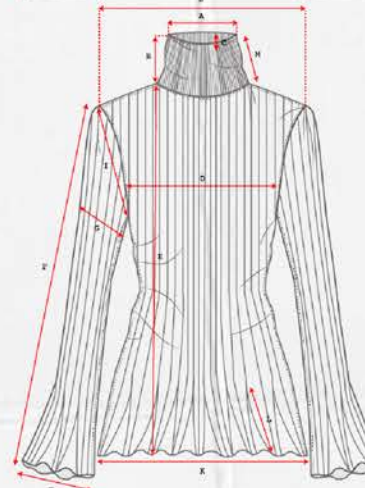
# OUTFIT BREAKDOWN

LOOK TWO



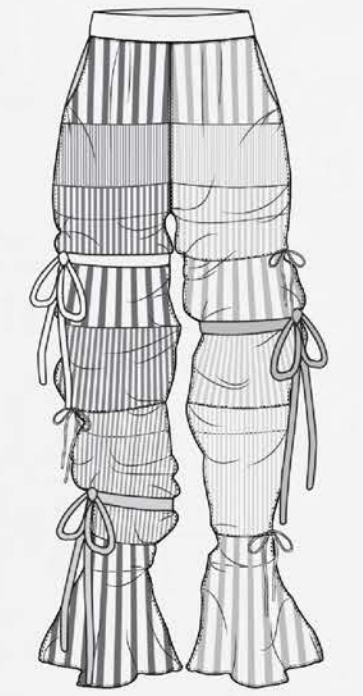
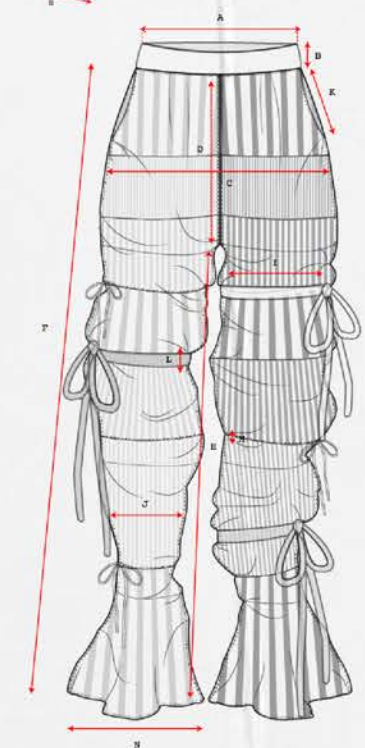
## INLAY OVERSIZE JACKET

- A = Neck Opening 24cm
- B = Back Neck Drop 18cm
- C = Shoulder Width 34cm
- D = Chest Width (Jacket Front Half) 34cm
- E = Body Length 55cm
- F = Armhole Depth 24cm
- G = Sleeve Length 64cm
- H = Side Seam 7cm
- I = Back Panel / Full Front Width 68cm
- J = Back Seam 37cm



## PARTIAL KNIT JUMPER

- A = Neck Width 20cm
- B = Front Neck Drop 9cm
- C = Back Neck Drop 1.5cm
- D = Chest Width 54cm
- E = Body Length 72cm
- F = Sleeve Length 72cm
- G = Sleeve Width 20cm
- H = Partial Knit Cuff Width 25cm
- I = Armhole Depth 22cm
- J = Top of Shoulder Width 42cm
- K = Partial Knit Hem Width 59cm
- L = Partial Knit Depth 15.5cm
- M = Rib Neck Trim Depth (folded) 12cm



## FLAREE LEG TROUSERS WITH TIE-STRAPPING DETAILS

- A = Waistband Width 34cm
- B = Waistband Depth 8.5cm
- C = Width at Top 38cm
- D = Waistband to Crotch Length 32cm
- E = Trouser Length (without Strapping) 140cm
- F = Trouser Length (with Strapping) 120cm
- G = Inside Leg Length (without Strapping) 114cm
- H = Inside Leg Length (with Strapping) 94cm
- I = Leg Width Widest = 35cm
- J = Leg Width Smallest = 15cm
- K = Pocket Length = 20cm
- L = 12-Gauge Strapping Width = 4.5cm
- M = Lilibut Cord Width = 0.5cm
- N = Width at Bottom = 32



PHOTOSHOOT

