

NTU FASHION DESIGN
FINAL YEAR
FINAL MAJOR PROJECT
N0822387
JUNGMIN HAN

TMP REEL

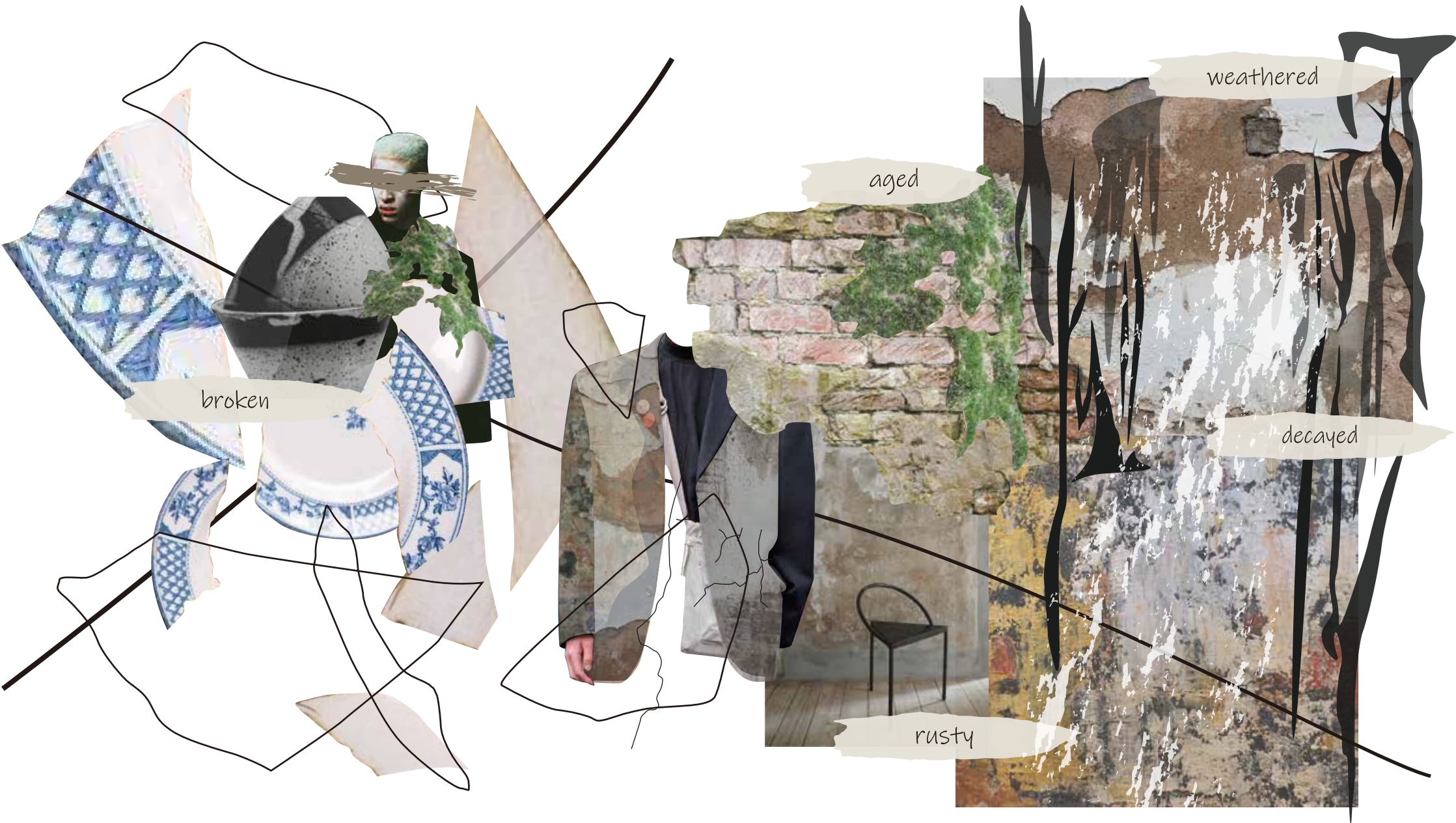


WHAT IS PERFECT?

"What's perfect?" This one question mark never left my head. The beginning of the journey to find the answer to this question was not an approach to perfection, but an approach to imperfect beauty.

WABI SABI

In traditional Japanese aesthetics, wabi-sabi is a world view centered on the acceptance of transience and imperfection. The aesthetic is described as one of appreciating beauty that is "imperfect, impermanent, and incomplete" in nature.



broken

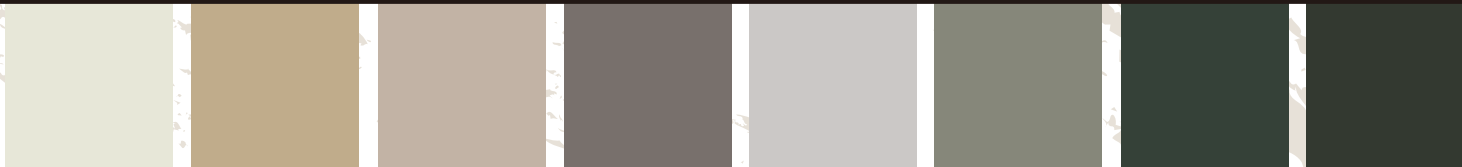
aged

weathered

decayed

rusty

CONCEPT



COLOUR PALETTE

magazine manipulation
- peeling the surface



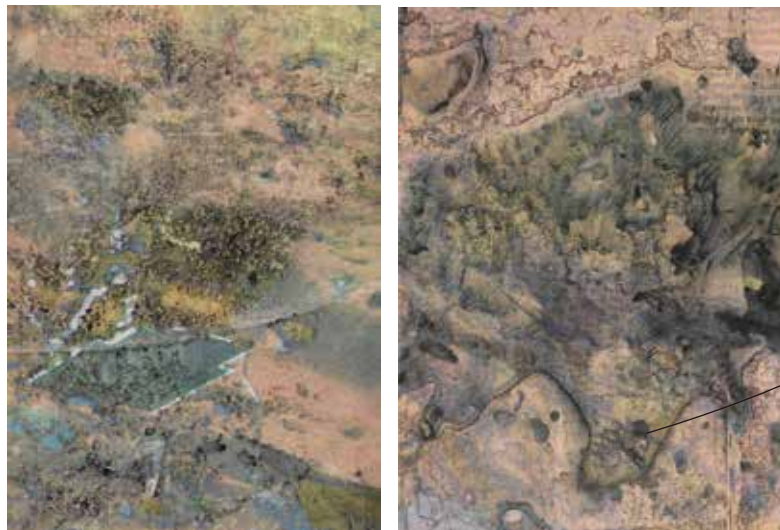
denim bleaching



natural dyeing
- metal rusting on the calico
with vinegar and salt



surface manipulation
- altering magazine pages
with natural cleaner



acrylic painting mixed with modeling paste

I have experimented various materials such as magazines, fabrics, metal sheet and acrylic paints to express rusty and decayed texture and colour inspired by 'wabi-sabi' mood. Through a range of creative methods, each unexpected textures and colour were derived.

OUTFIT 1
2D & 3D DESIGN DEVELOPMENT



4 buttons shirt
centre front finish

I opened the left side seamline of the shirt to make hand easier to put in the trousers' pocket and to maintain the silhouette of the shirt.

It shows the big length gap between the tailor jacket and the shirt, providing asymmetric and deconstructed mood



reduced length of trousers to the ankle point



right front additional layer

jet pocket with cover on the left back

big shape of pocket with button closure on the right back

OUTFIT 1
2D & 3D DESIGN DEVELOPMENT



tailor jacket drawing with the design concept of asymmetric and deconstructed

tailor jacket inside and pocket details development



hidden closure with the button inside of jet pocket on the left front layer



asymmetric length of vent on the back centre line

hidden jet pocket between front layers



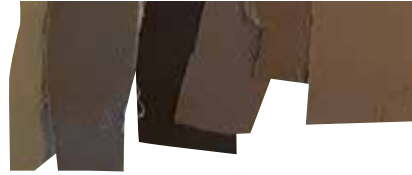
2 button finish on centre front of layered way closure



hidden jet pocket with cover on the left front layer

OUTFIT 2
2D & 3D DESIGN DEVELOPMENT

coat drawing with the design concept of
asymmetric and deconstructed



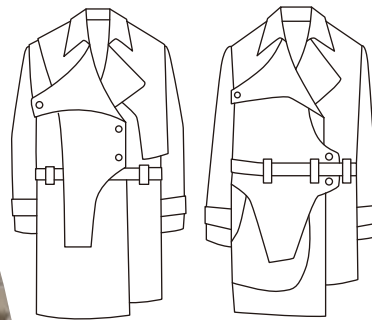
big right lapel
&
left normal lapel



closed lapel covering left shoulder



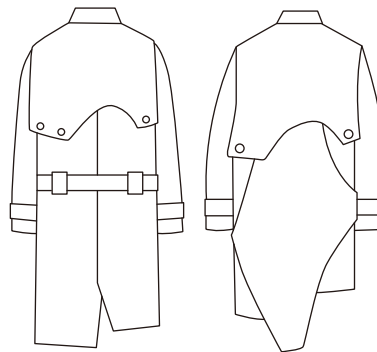
hidden lapel covered
by front layer



coat back yoke with
button finishes



different length of
coat back patterns

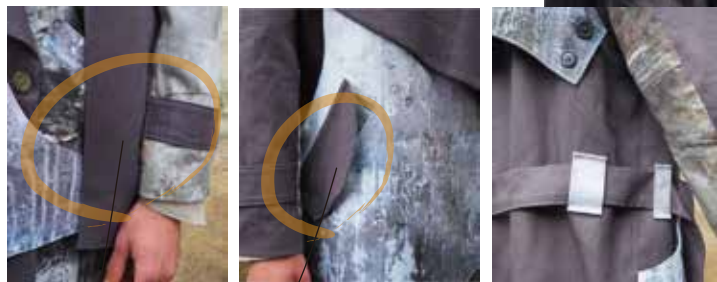


OUTFIT 2
2D & 3D DESIGN DEVELOPMENT



back yoke design development

side space between layers
to put hands in the hidden front big pocket



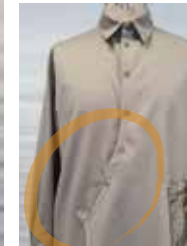
front welt pocket

sleeve strap and layered
way of buttons closure

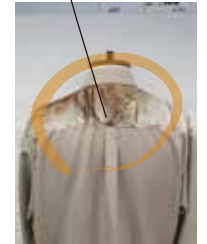
deconstructed shape of shirt



printing on the
front pocket



printing on the back
yoke and pleat



two hidden buttons
waist finish



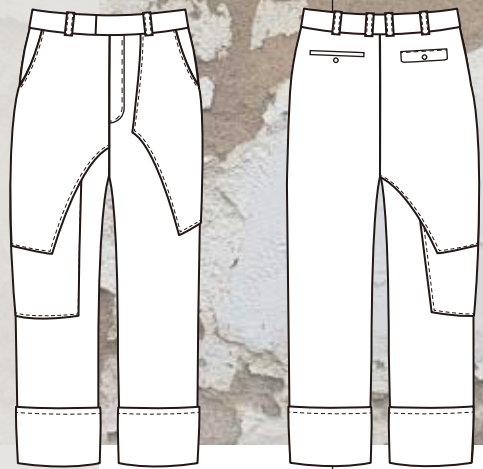
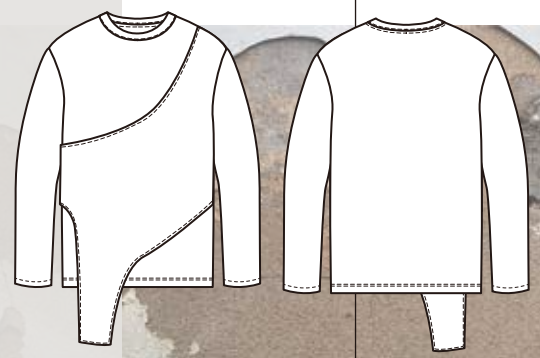
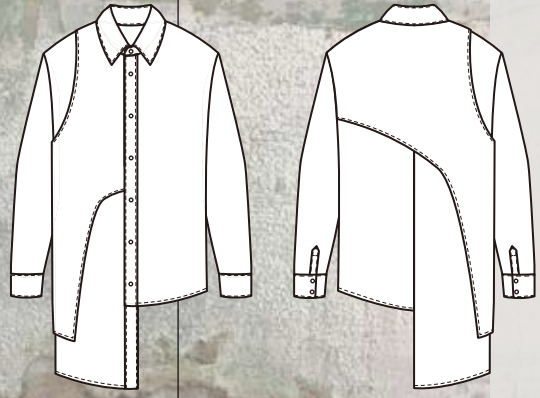
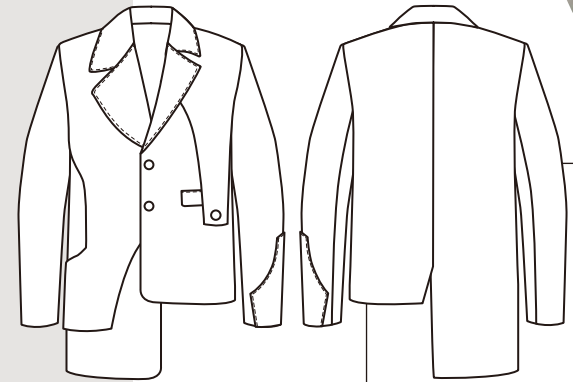
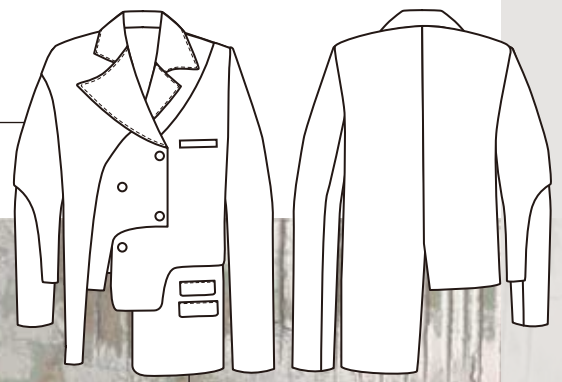
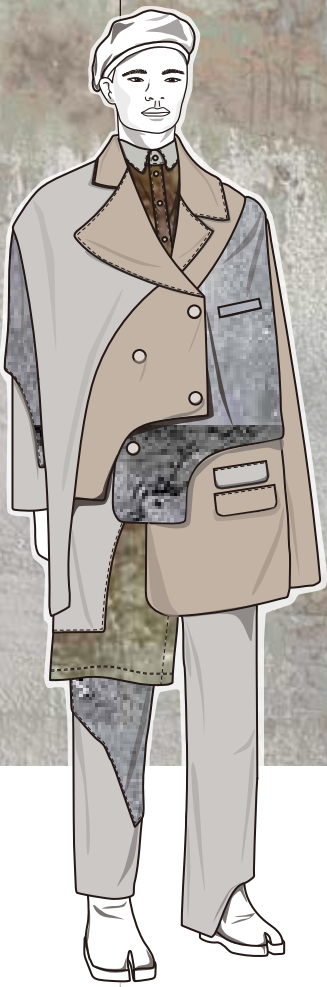
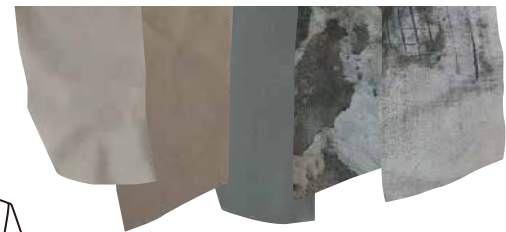
outside pocket with
printing fabric binding edge



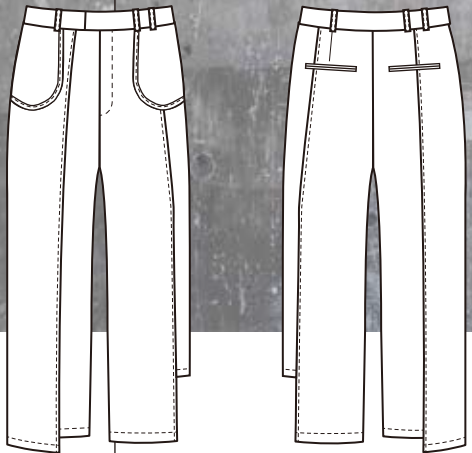
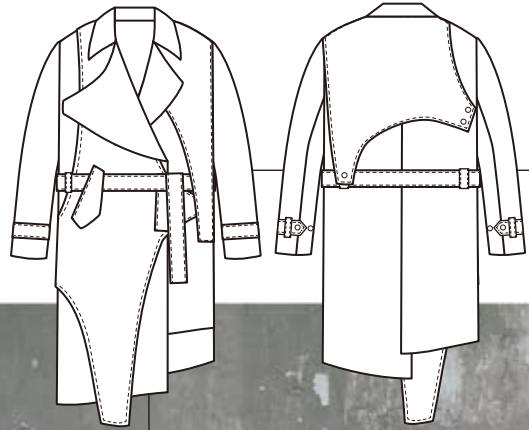
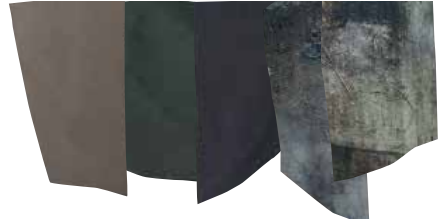
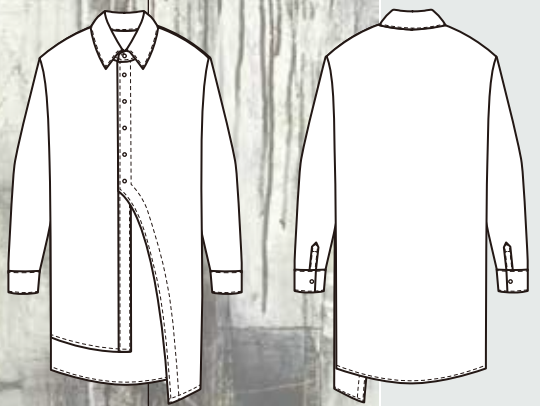
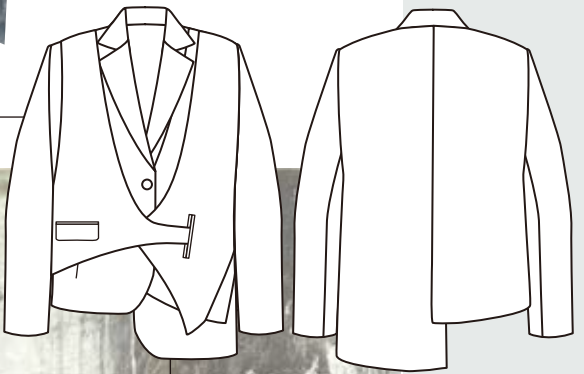
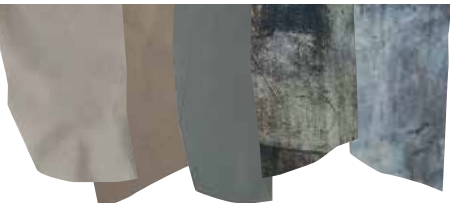
back jet pockets



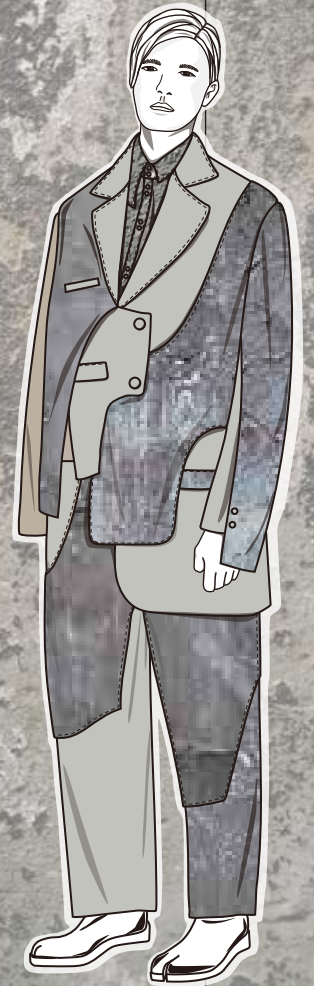
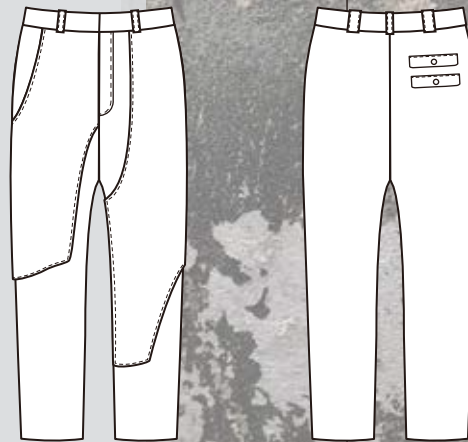
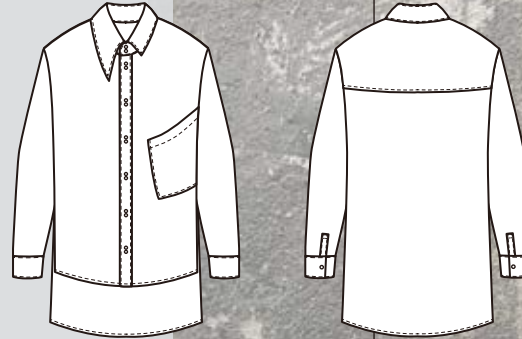
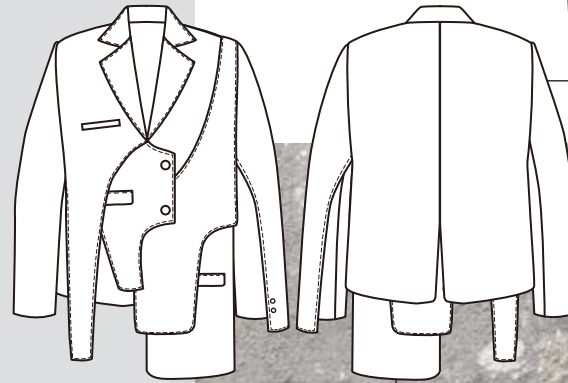
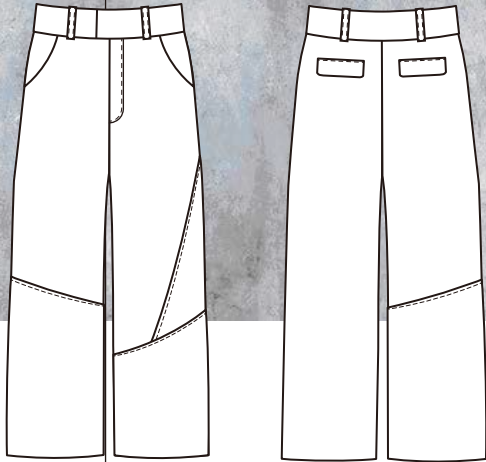
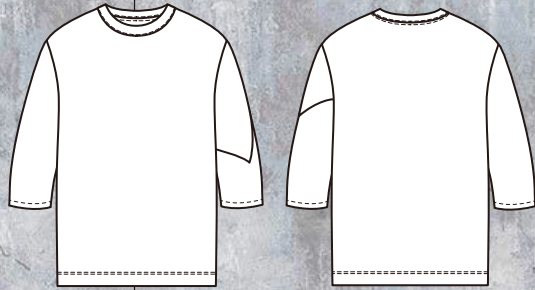
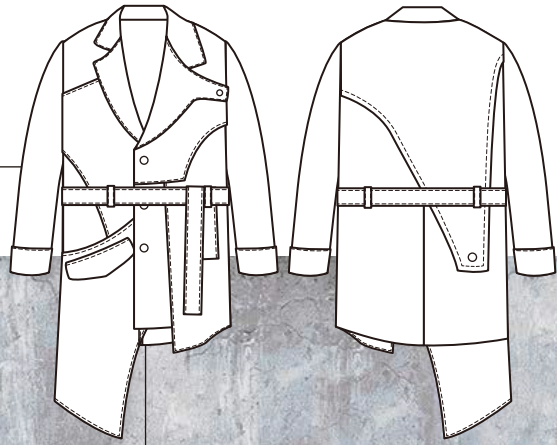
LINE UP



OUTFIT BREAKDOWN



OUTFIT BREAKDOWN



OUTFIT BREAKDOWN





PHOTOSHOOT
