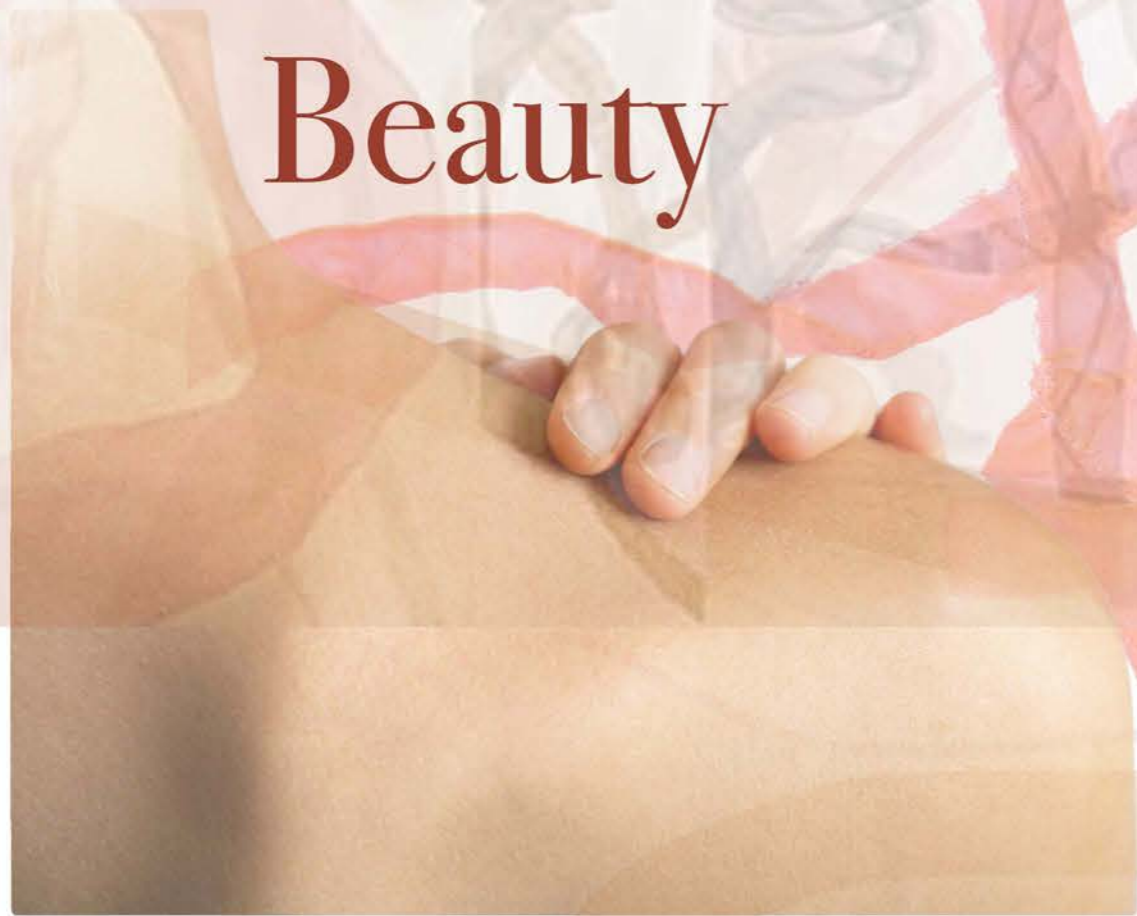
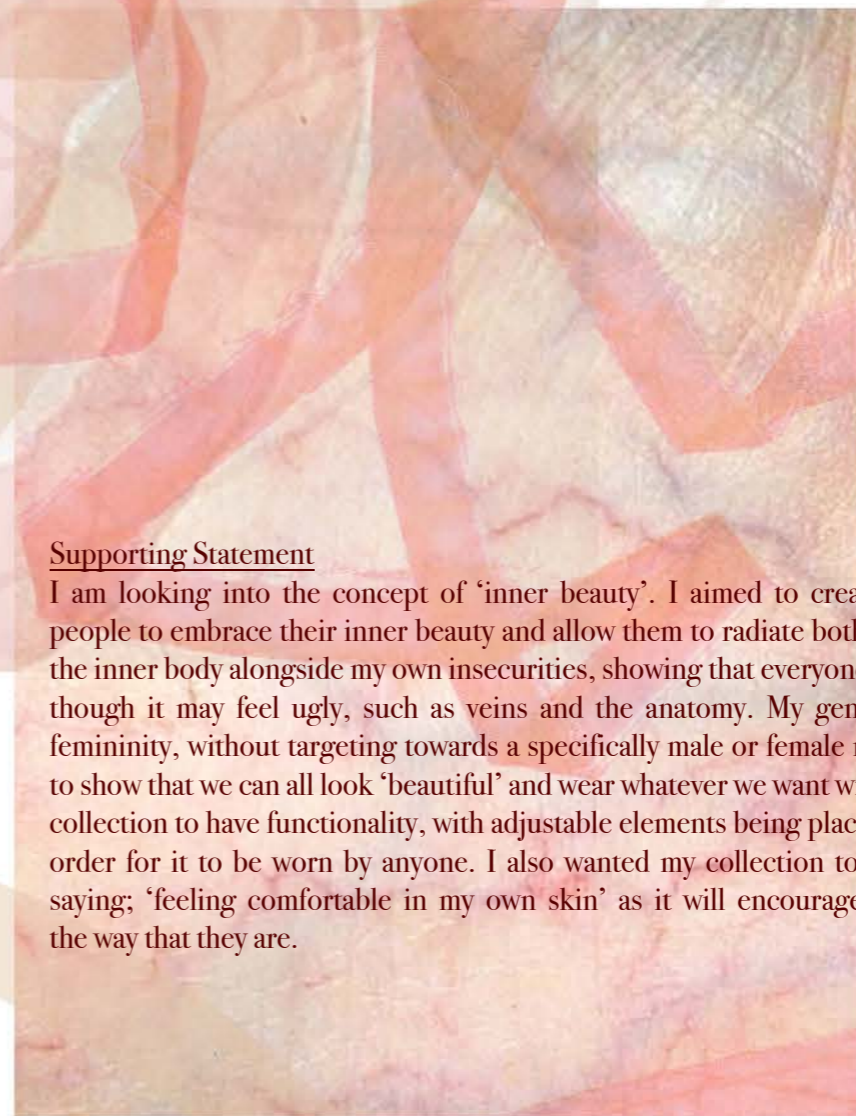


The Anatomy Of Beauty

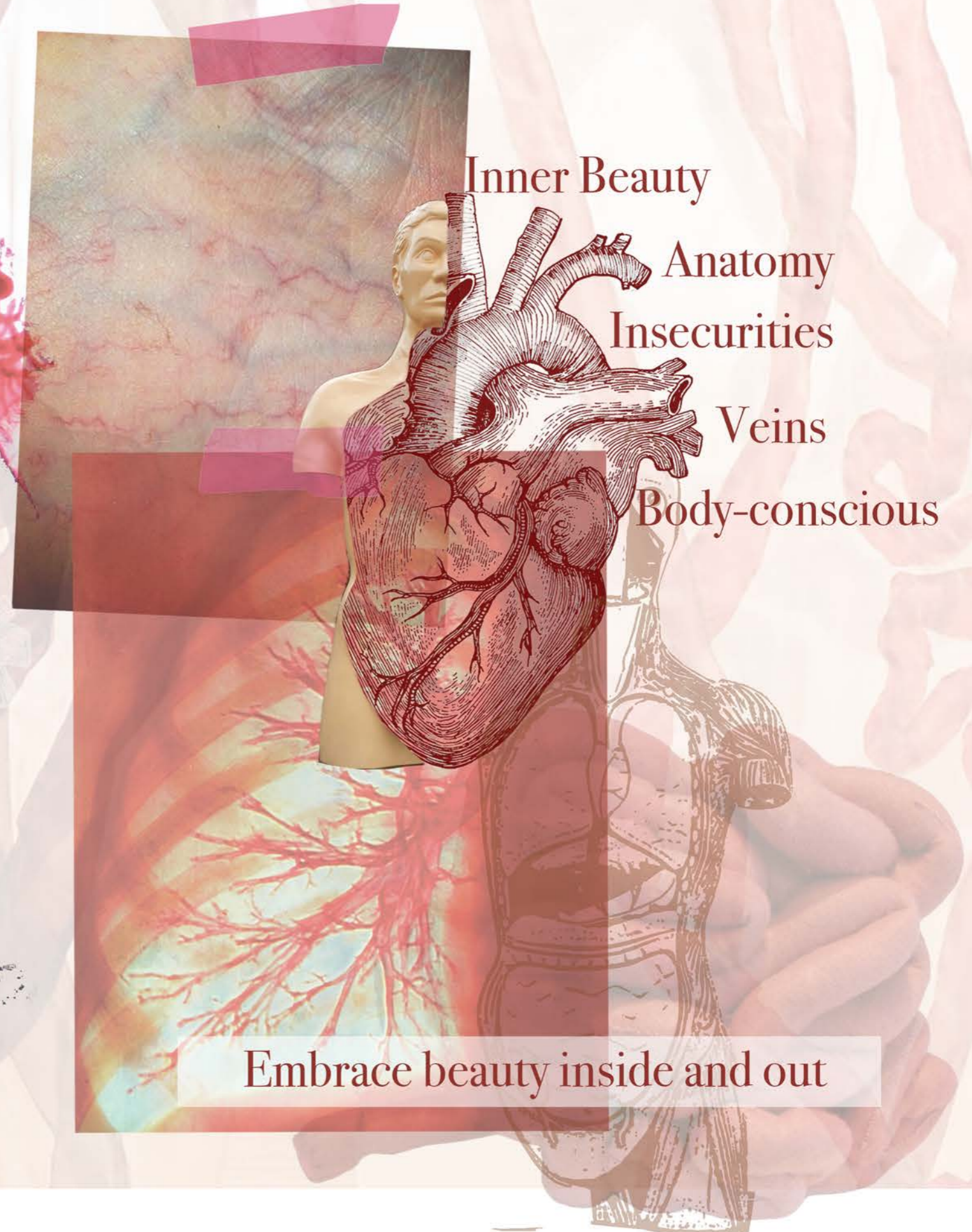
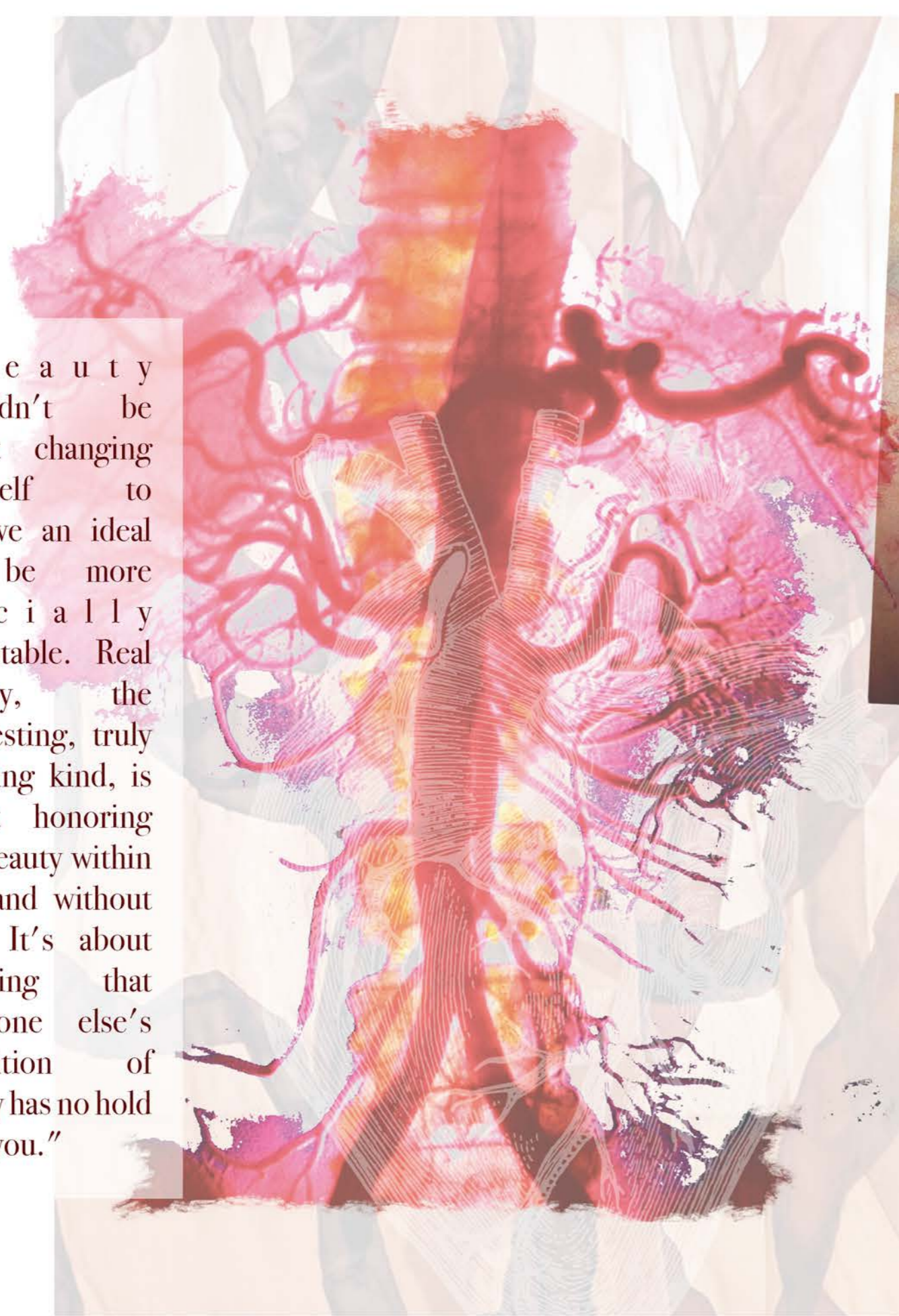


Supporting Statement

I am looking into the concept of 'inner beauty'. I aimed to create a collection that allows for people to embrace their inner beauty and allow them to radiate both inside and out. I'm looking at the inner body alongside my own insecurities, showing that everyone is beautiful on the inside even though it may feel ugly, such as veins and the anatomy. My gender neutral range, focuses on femininity, without targeting towards a specifically male or female market, as I want my collection to show that we can all look 'beautiful' and wear whatever we want without judgment. I chose for my collection to have functionality, with adjustable elements being placed throughout the collection in order for it to be worn by anyone. I also wanted my collection to be comfortable to imitate the saying; 'feeling comfortable in my own skin' as it will encourage people to feel beautiful with the way that they are.



"Beauty shouldn't be about changing yourself to achieve an ideal or be more socially acceptable. Real beauty, the interesting, truly pleasing kind, is about honoring the beauty within you and without you. It's about knowing that someone else's definition of pretty has no hold over you."



Inner Beauty

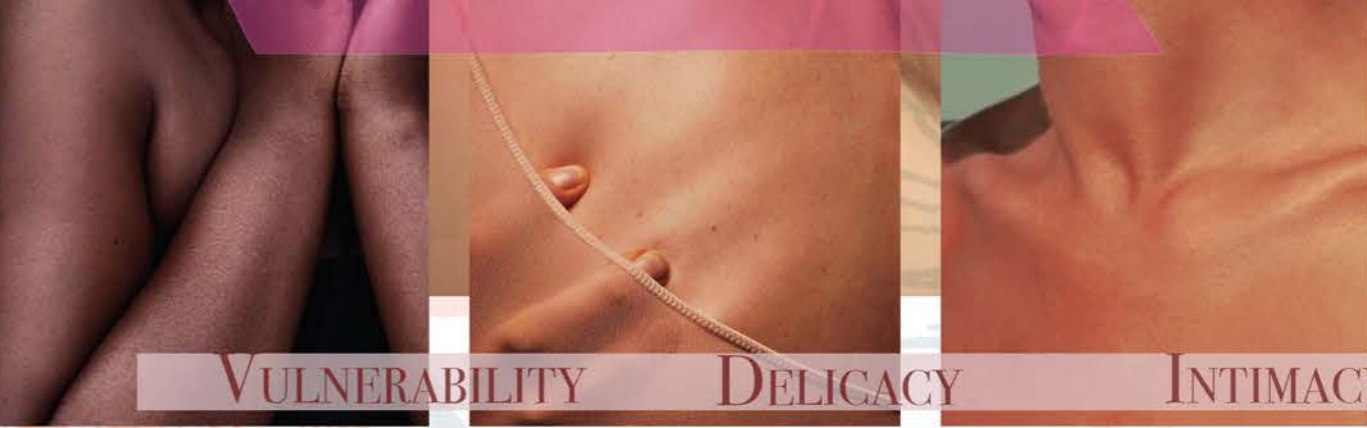
Anatomy
Insecurities

Veins

Body-conscious

Embrace beauty inside and out

Being feminine is often associated with delicacy and vulnerability this is often perceived as weak and fragile, but only when someone embraces their true self is when someone can be confident in their own skin.



VULNERABILITY

DELICACY

INTIMACY

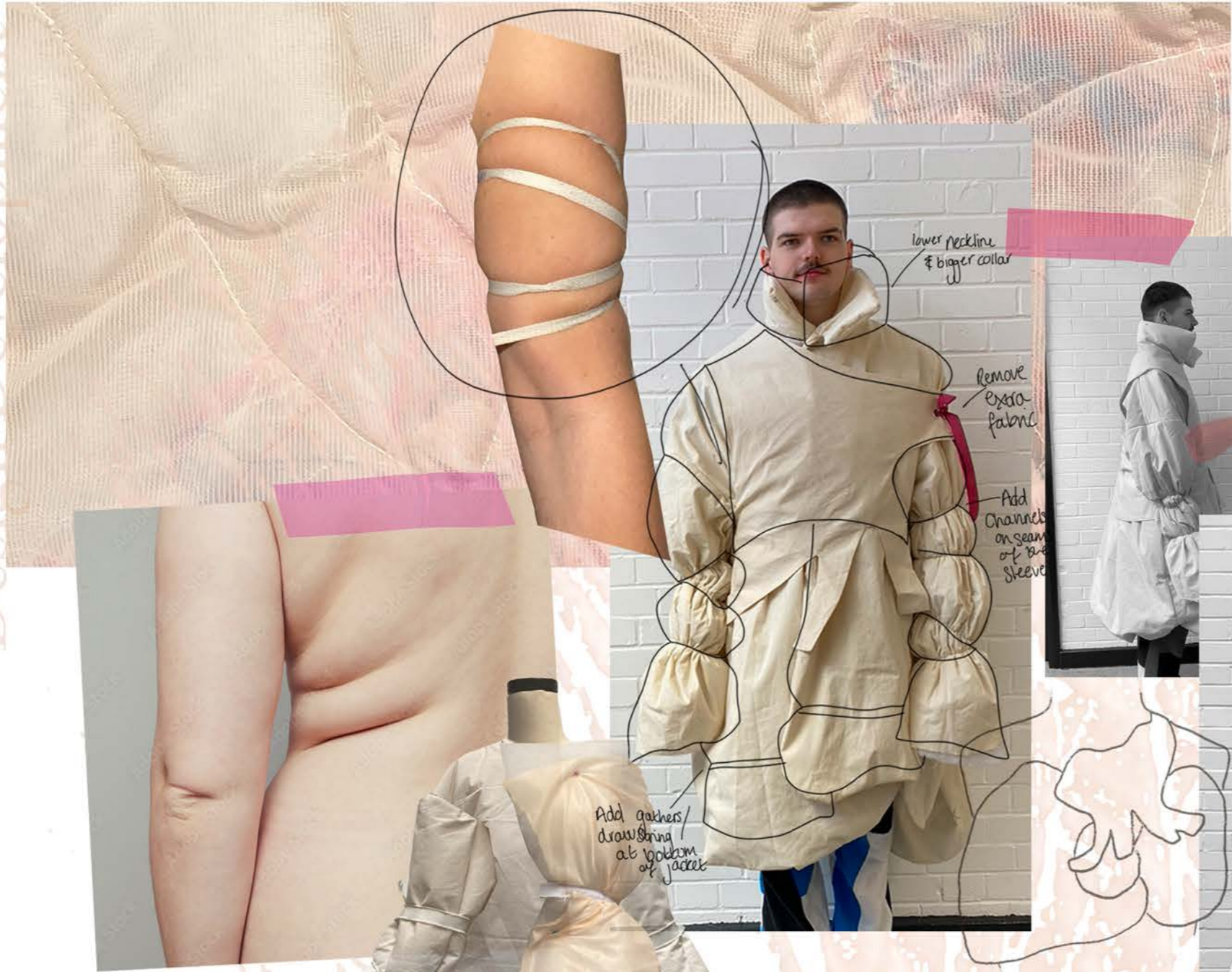


Femininity is inclusive.
Femininity is ungendered.
Femininity is free for everyone.

They're not women's
clothes they're my
clothes. I bought them.”
- Eddie Izzard

A collection to test the lines of gender. Encouraging everyone to embrace their femininity, targeted towards anyone who wants to wear it, no matter their gender.

Design Development



Design Development





Adjust to
remove
central
seam



Adjust
neckline &
opening
Make
wider
so can
fit
better

Add more
fabric to
create
larger
gathers



Addition of a
corset creates the
sense of femininity
and creates more
ruching

Design Development

Athleisure wear

Technical Fabrics

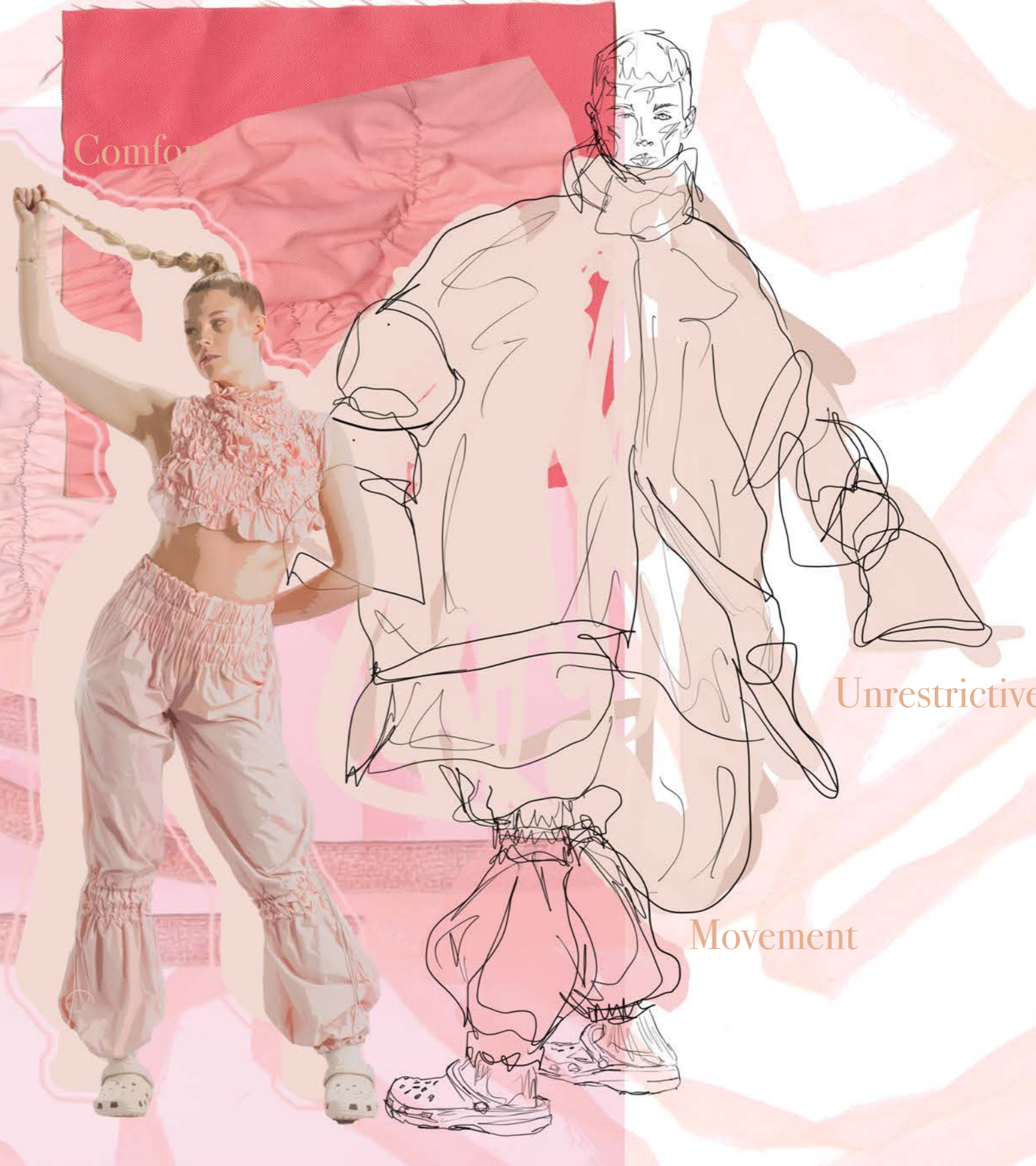
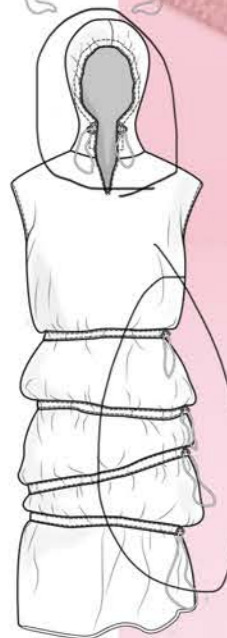
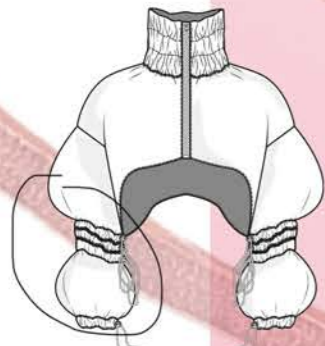
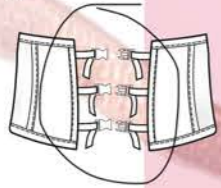
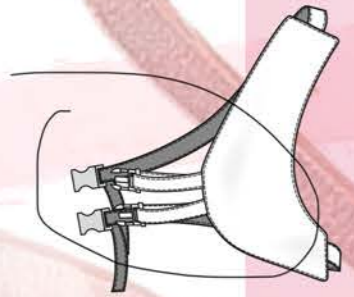
Comfort

Functional

Practicality

Unrestrictive

Adjustable



Unrestrictive

Movement

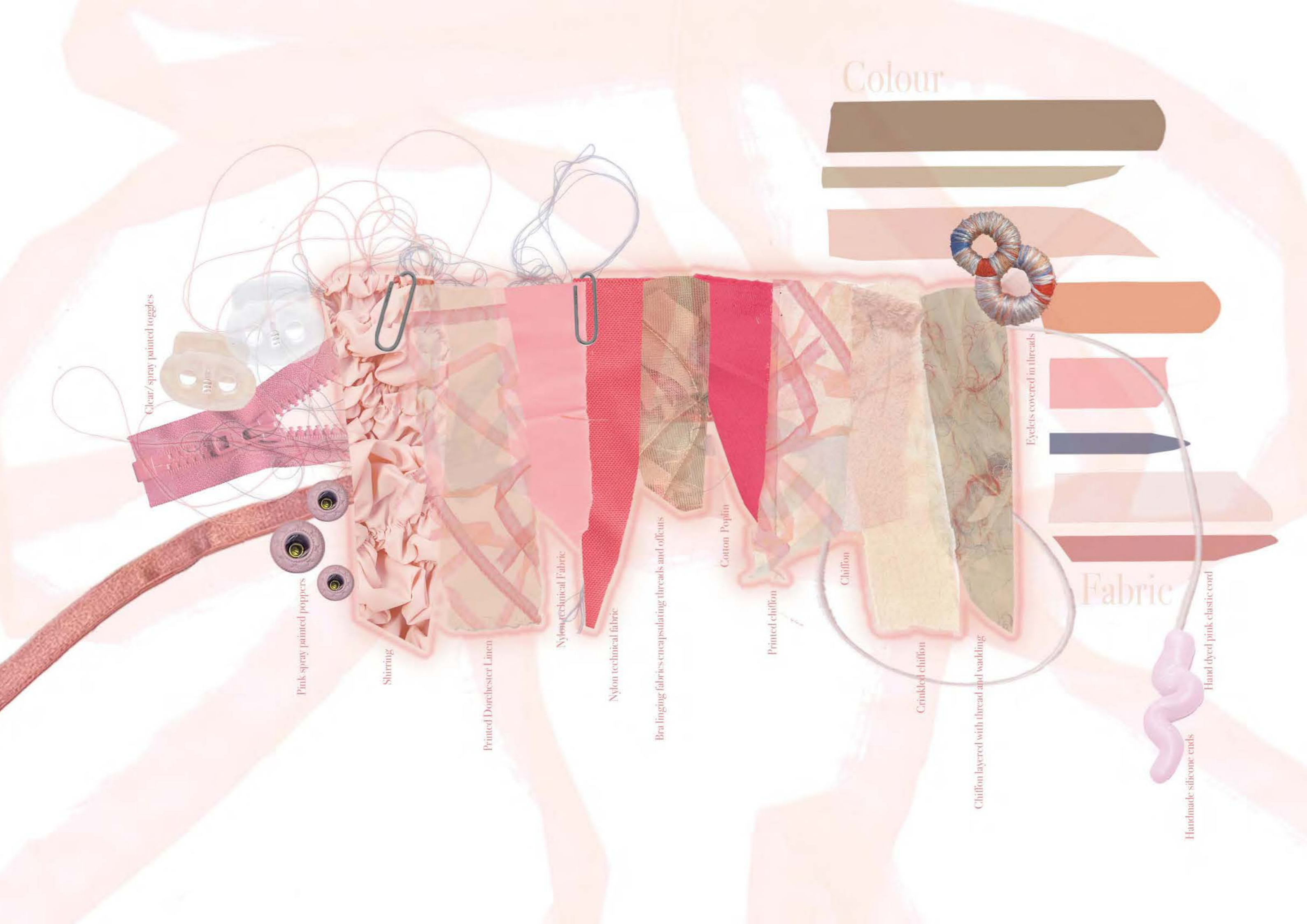
Fabric Processes

Sewing through the three layers of bra mesh fabric, wadding and offcut threads created the textile that imitates skin and veins, which encapsulated the idea of 'thin skin' and my own insecurities over veins.

I used randomised shirring with a pink, thin, technical nylon which created the puffy texture that imitates body rolls, skin and stretch marks. This textile is reversed so that the elastic is visible, which imitates veins. As elastic shirring has been used it means that the top is very stretchy allowing for it to be worn by anyone.

Inspired by Renato Dib's art I created these prints that fill the whole garment, without repeating.

Print



Clear/spray painted toggles

Pink spray painted poppers

Shirring

Printed Dorchester Linen

Nylon technical Fabric

Nylon technical fabric

Bra linging fabrics encapsulating threads and offcuts

Cotton Poplin

Printed chiffon

Chiffon

Crinkled chiffon

Chiffon layered with thread and wadding

Eyelets covered in threads

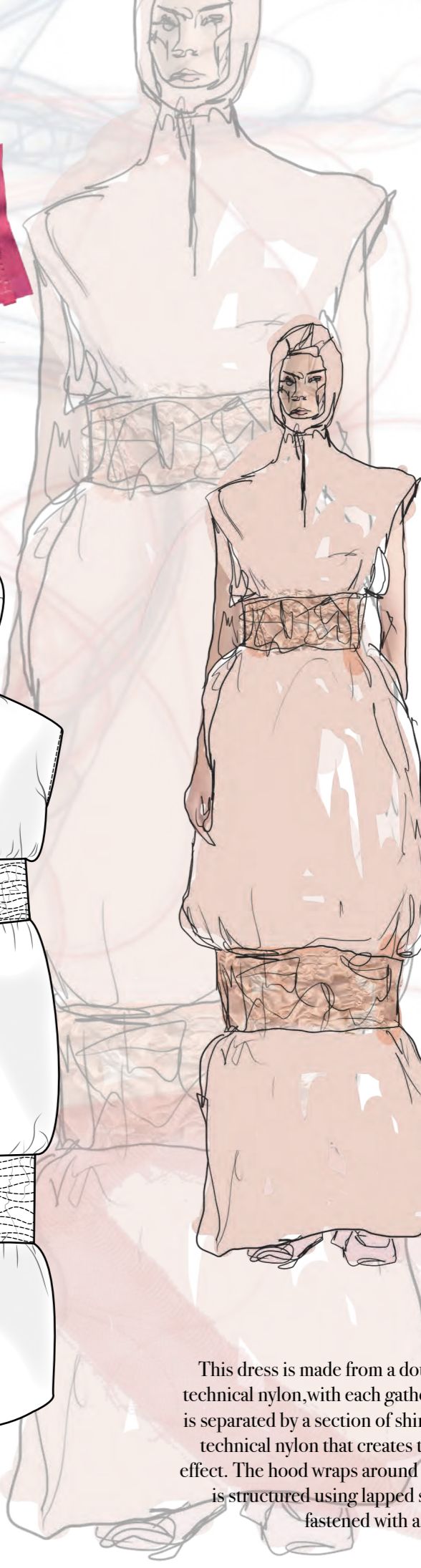
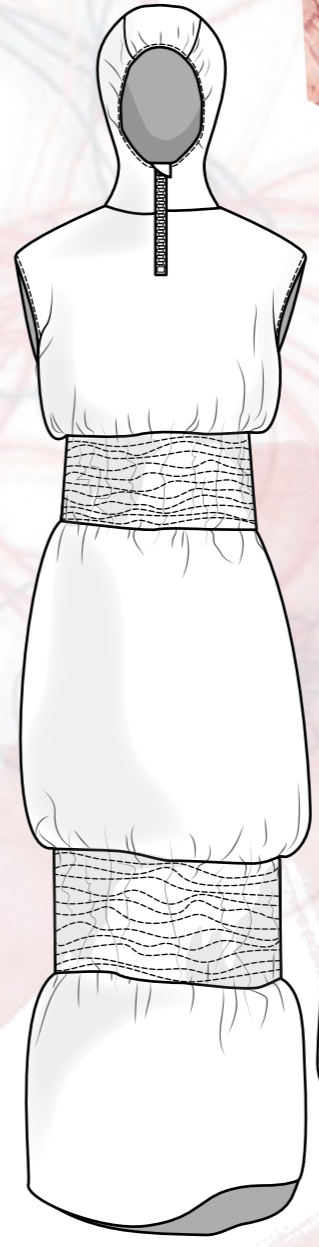
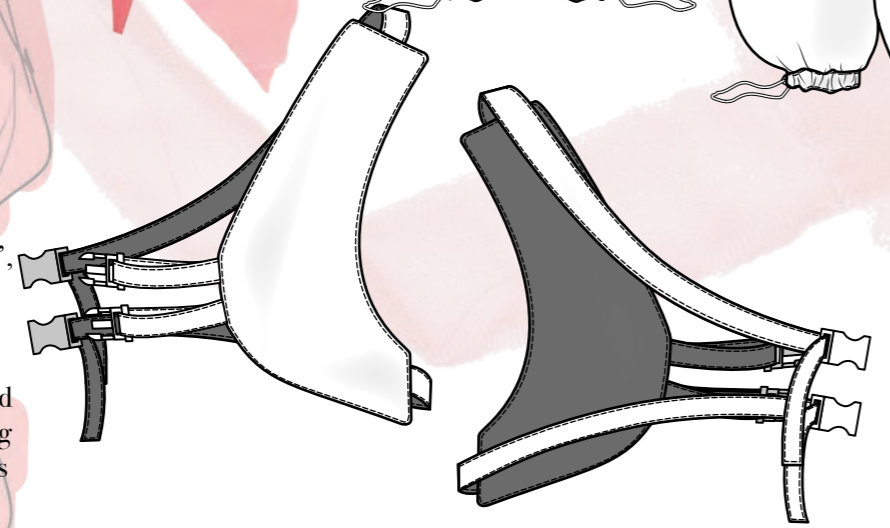
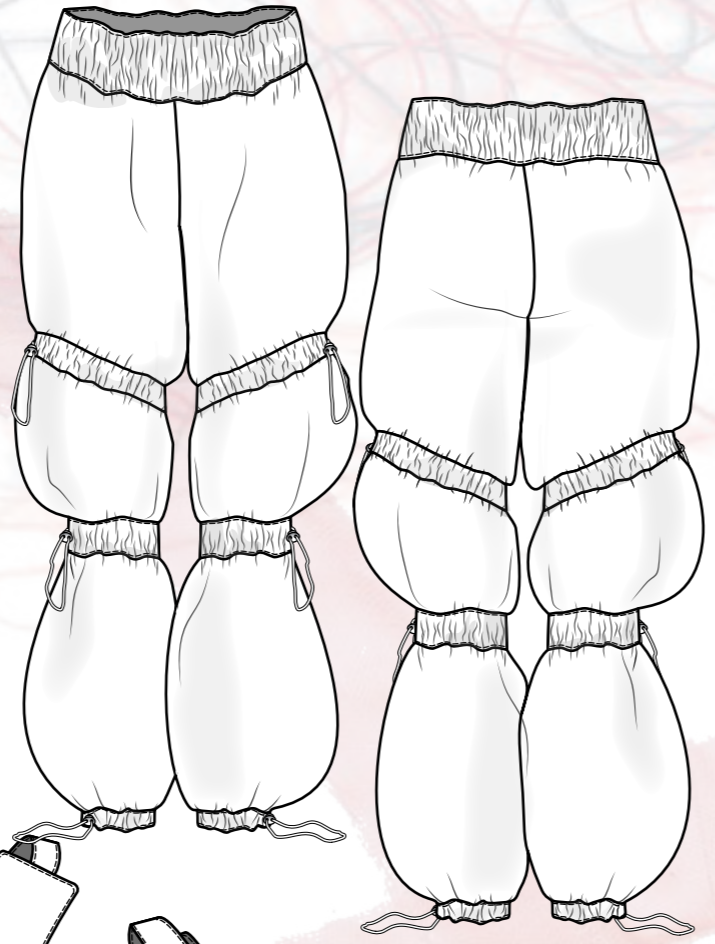
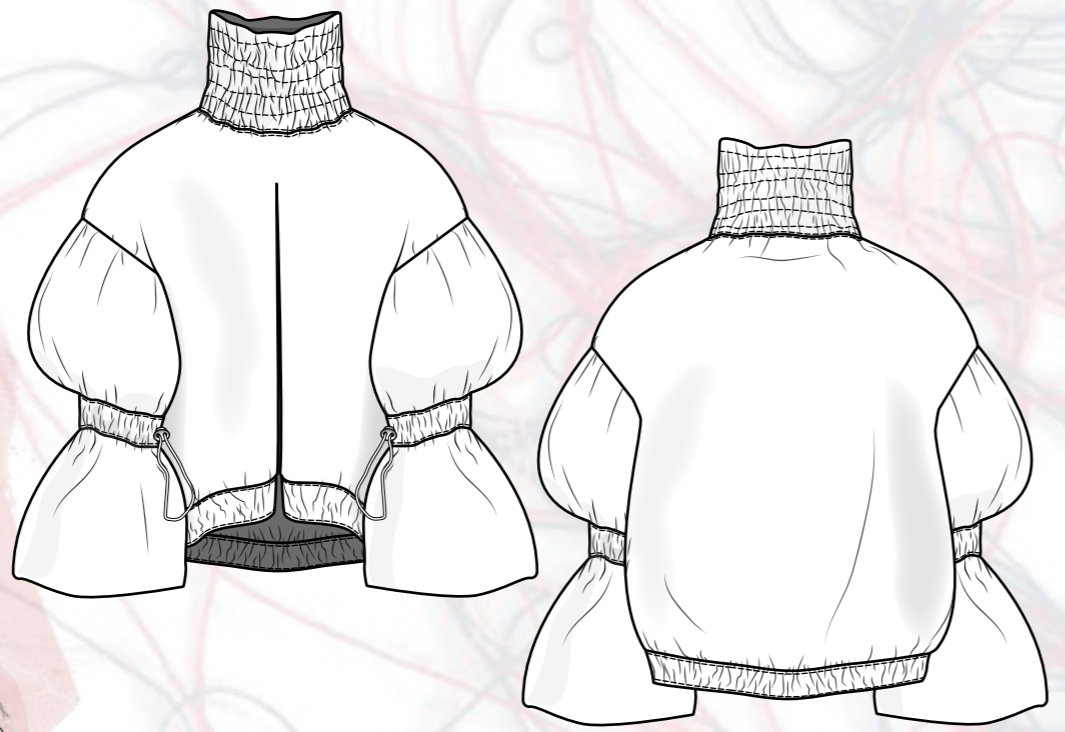
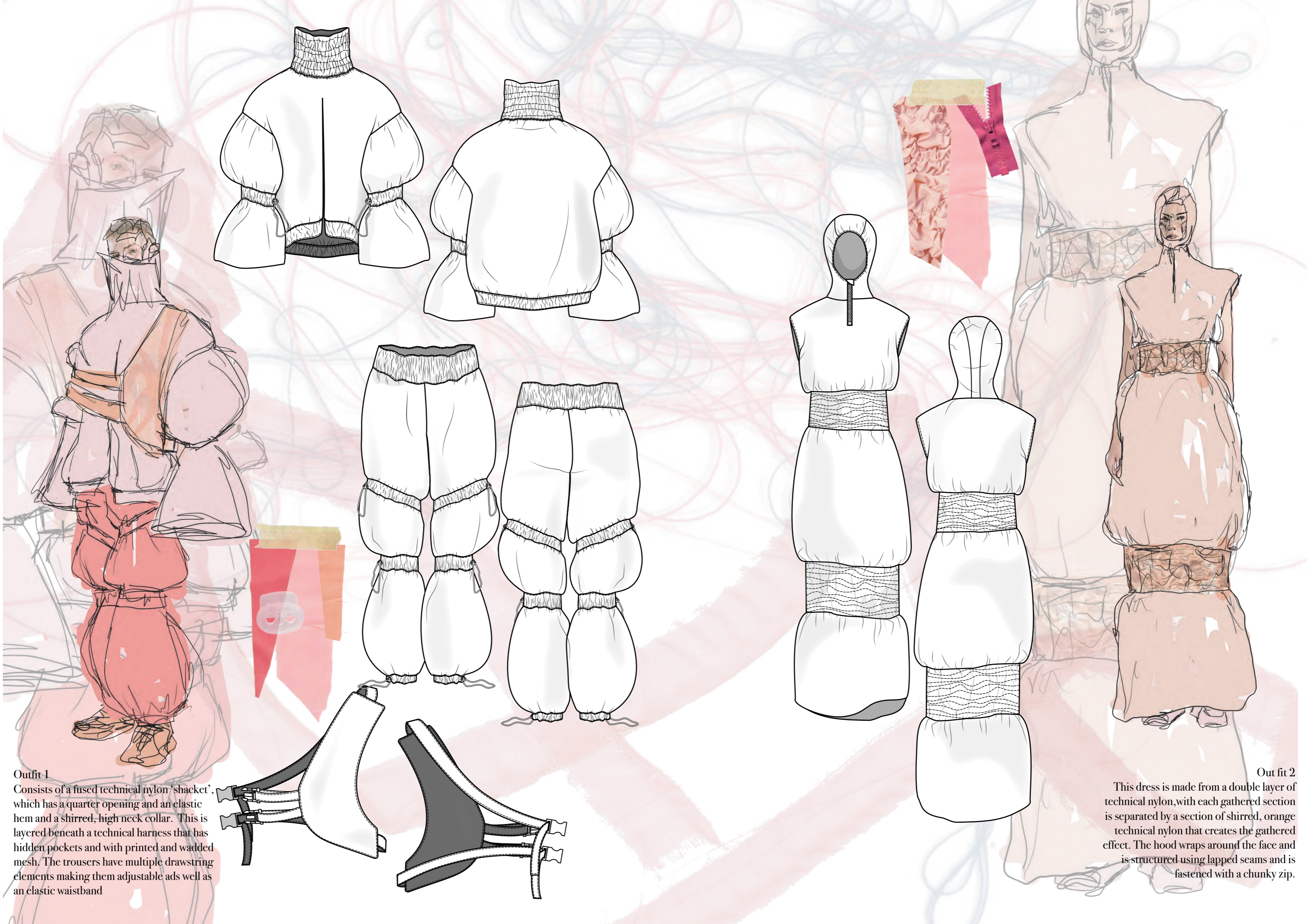
Fabric

Colour

Handmade silicone ends

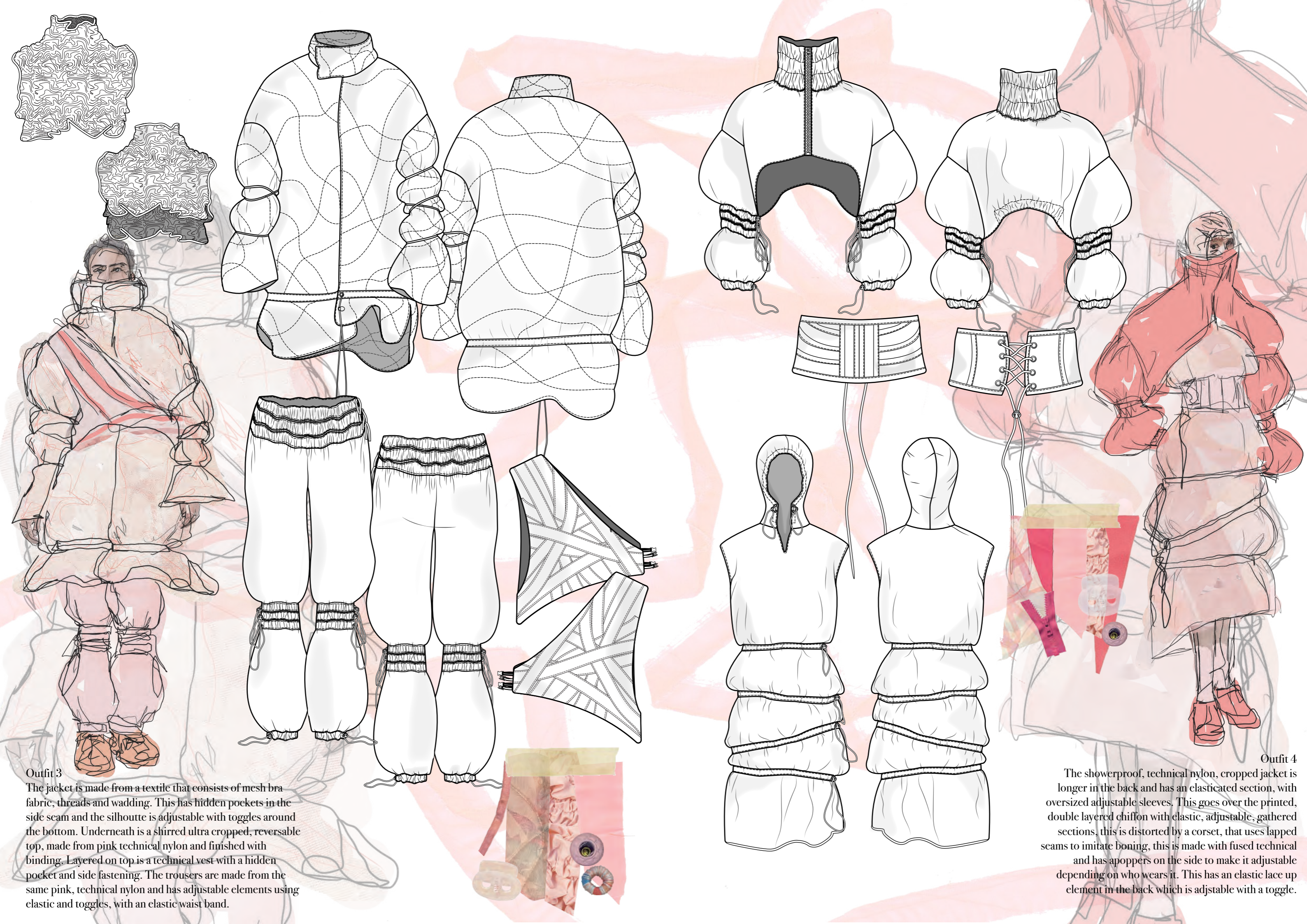
Hand dyed pink elastic cord





Outfit 1
 Consists of a fused technical nylon 'shacket', which has a quarter opening and an elastic hem and a shirred, high neck collar. This is layered beneath a technical harness that has hidden pockets and with printed and wadded mesh. The trousers have multiple drawstring elements making them adjustable as well as an elastic waistband

Out fit 2
 This dress is made from a double layer of technical nylon, with each gathered section is separated by a section of shirred, orange technical nylon that creates the gathered effect. The hood wraps around the face and is structured using lapped seams and is fastened with a chunky zip.

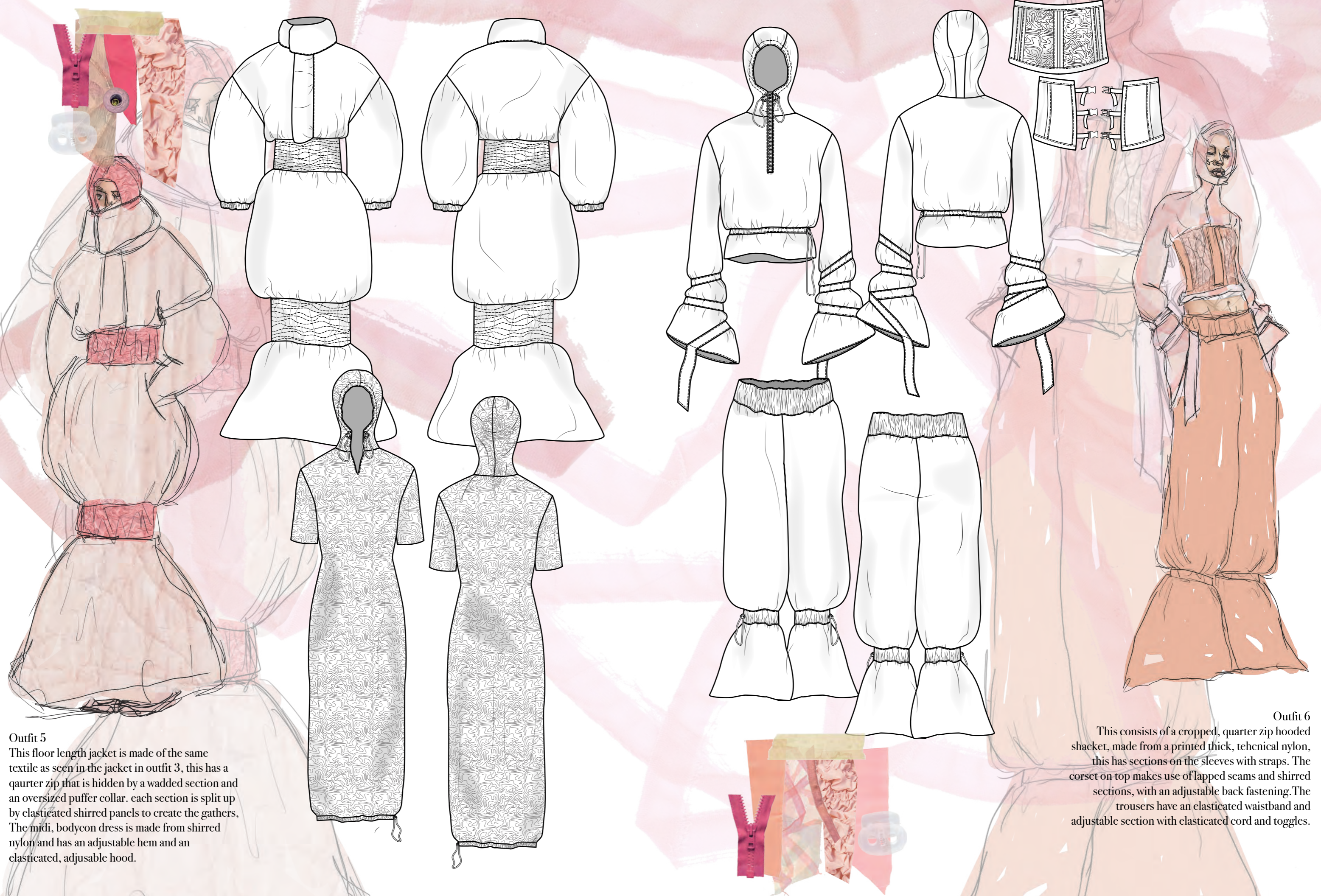


Outfit 3

The jacket is made from a textile that consists of mesh bra fabric, threads and wadding. This has hidden pockets in the side seam and the silhouette is adjustable with toggles around the bottom. Underneath is a shirred ultra cropped, reversible top, made from pink technical nylon and finished with binding. Layered on top is a technical vest with a hidden pocket and side fastening. The trousers are made from the same pink, technical nylon and has adjustable elements using elastic and toggles, with an elastic waist band.

Outfit 4

The showerproof, technical nylon, cropped jacket is longer in the back and has an elasticated section, with oversized adjustable sleeves. This goes over the printed, double layered chiffon with elastic, adjustable, gathered sections, this is distorted by a corset, that uses lapped seams to imitate boning, this is made with fused technical and has apoppers on the side to make it adjustable depending on who wears it. This has an elastic lace up element in the back which is adjustable with a toggle.



Outfit 5

This floor length jacket is made of the same textile as seen in the jacket in outfit 3, this has a quarter zip that is hidden by a wadded section and an oversized puffer collar. each section is split up by elasticated shirred panels to create the gathers. The midi, bodycon dress is made from shirred nylon and has an adjustable hem and an elasticated, adjustable hood.

Outfit 6

This consists of a cropped, quarter zip hooded shacket, made from a printed thick, technical nylon, this has sections on the sleeves with straps. The corset on top makes use of lapped seams and shirred sections, with an adjustable back fastening. The trousers have an elasticated waistband and adjustable section with elasticated cord and toggles.

Final Outfits on male and female models



秀秀

秀秀