

"FUNCTIONAL BEINGS"
FINAL MAJOR PROJECT
PORTFOLIO
REISHA WAITE-GREEN



"FUNCTIONAL BEINGS"

EXPLORING THE IDEAS OF OVER-FUNCTIONALITY BY EXPERIMENTING WITH MATERIALS AND PROCESSES TO CREATE INNOVATIVE GARMENTS. USING MULTIPLE FASTENINGS AND TECHNICAL FABRICS TO PORTRAY MY CONCEPT.

summit est. 1962

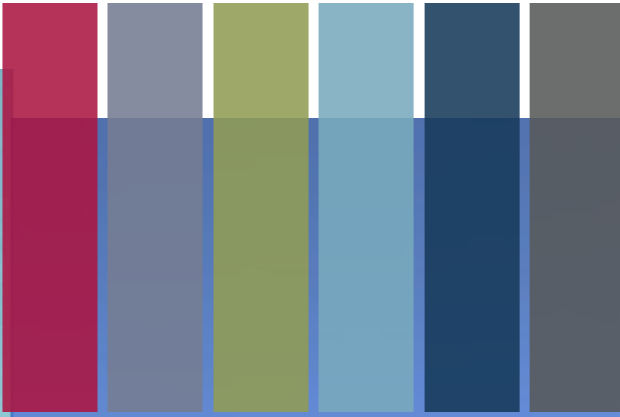
HIGH AND HALLOWED EVEREST 1963



THE GREAT OUTDOORS

WHEN EXPLORING MY CONCEPT OF "FUNCTIONAL BEINGS", I HAVE TAKEN INSPIRATION FROM HIKING/MOUNTAINEERING. LOOKING INTO THE HISTORY OF MOUNTAINEERING AND THROUGH OUTDOOR ARCHIVES I HAVE TAKEN INSPIRATION FROM MATERIALS/SILHOUETTES AND FUNCTIONAL ASPECTS.

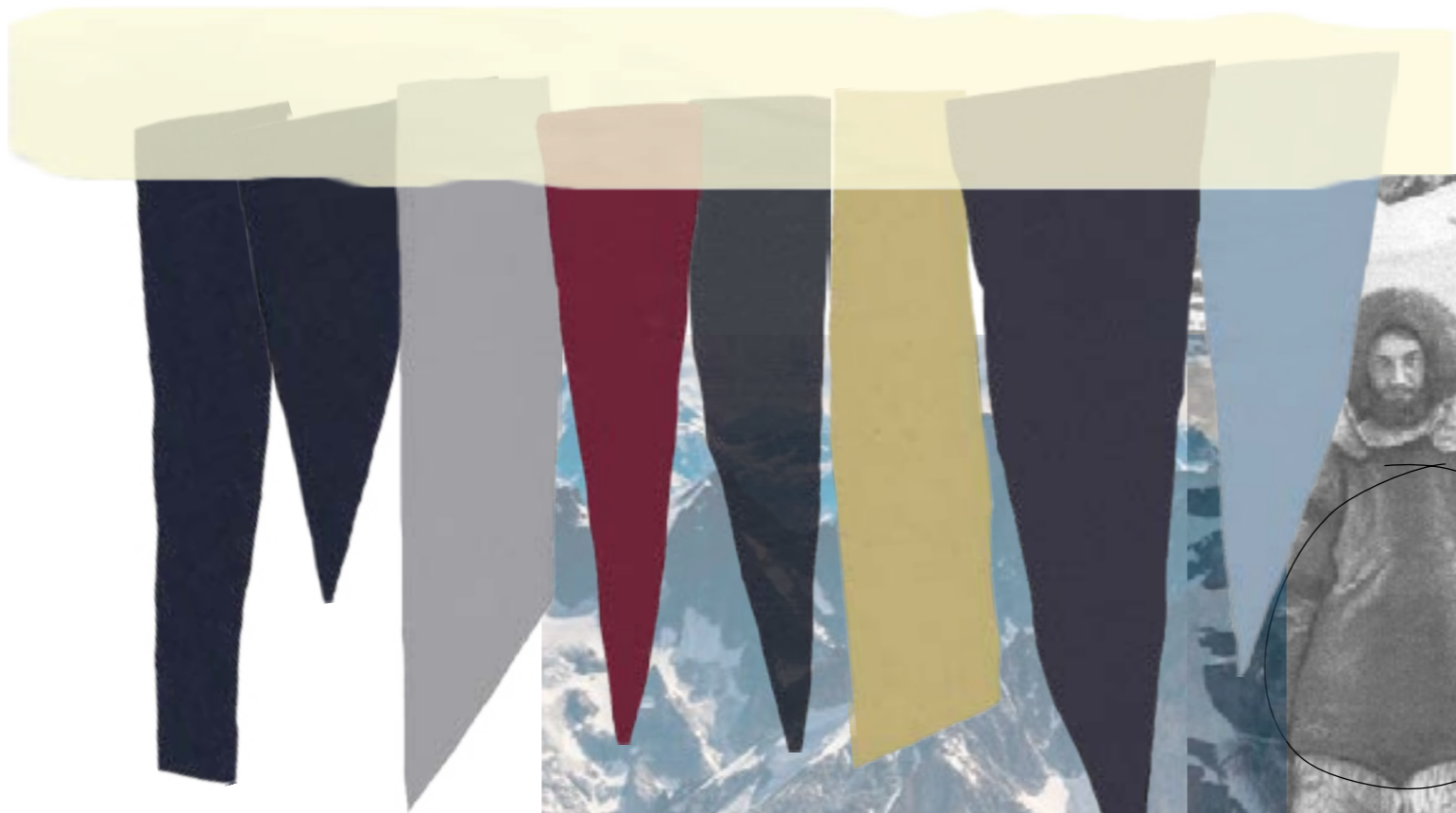




COLOUR PALETTE

TAKING INSPIRATION FROM MY INITIAL PRIMARY AND SECONDARY RESEARCH, I HAVE PRODUCED A COLOUR PALETTE THAT BOTH REFLECTS MY CONCEPT AND MOUNTAINEERING/HIKING CULTURE.

MY COLOUR PALETTE WILL ALLOW ME TO PRODUCE A FUNCTIONAL/WEARABLE COLLECTION, THAT INCLUDES CORE DARKER TONES, WITH POPS OF BOLDER, BRIGHTER COLOURS



MY FABRICS ARE DRAWN FROM MY RESEARCH INTO INNOVATIVE TECHNICAL FABRICS. MY MAIN AIM FOR MY COLLECTION WAS TO PRODUCE OVERLY-FUNCTIONAL GARMENTS THAT USE INNOVATIVE FABRICS AND TECHNIQUES. WHEN SELECTING MY FABRICS I ENSURED EACH FABRIC INCORPORATED FUNCTIONAL/INNOVATIVE FEATURES SUCH AS WATERPROOFING, DURABILITY, BREATHABILITY, PROVIDING COMFORT AND INSULATION TO THE USER WHEN WEARING IT.



DURABLE FABRICS TO WITHSTAND HARSH WEATHER/TERRAIN



WADDING/ INSULATION PROVIDING WARMTH TO WEARER



WATERPROOF/WIND RESISTANT FABRICS

_0592.jpg



_0595.jpg



_0600.jpg



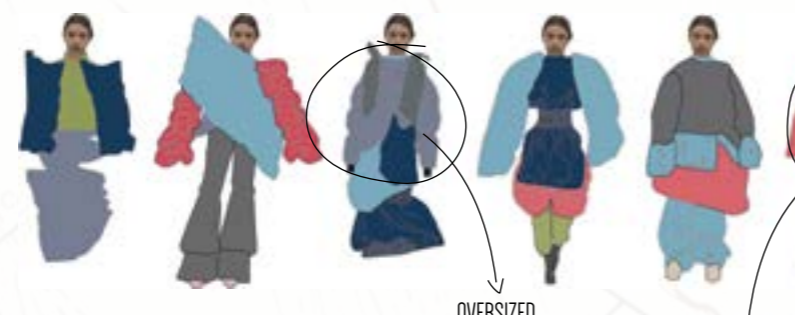
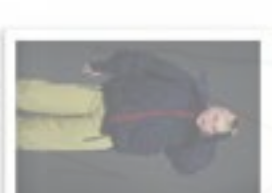
_0602.jpg



_0607.jpg



_0610.jpg



OVERSIZED PUFFER SLEEVES

EXAGGERATED SILHOUETTE

PUFFER JACKET DEVELOPMENT

WHEN DESIGNING MY FINAL COLLECTION, RESEARCHING INTO THE CONCEPT OF "FUNCTIONAL BEINGS", MY AIM WAS TO DESIGN AND CREATE OVERLY-FUNCTIONAL GARMENTS THAT USE TECHNICAL FABRICS AND INNOVATIVE PROCESSES. FROM MY INITIAL PRIMARY AND SECONDARY RESEARCH I DESIGNED A PUFFER JACKET THAT INCORPORATES ASPECTS OF MY CONCEPT AND INNOVATIVE TECHNIQUES AND FABRICS. THE JACKET I DESIGNED INCLUDED A DETACHABLE HOOD, DETACHABLE CIRCULAR POCKETS THAT ZIP TOGETHER TO CREATE A FUNCTIONAL BAG. FURTHERMORE, I WATERPROOF TAPE ALL SEAMS OF THE JACKET AS WELL AS USING A WATERPROOF FABRIC, MAKING THE JACKET FULLY FUNCTIONAL AND PRACTICAL FOR THE WEARER.

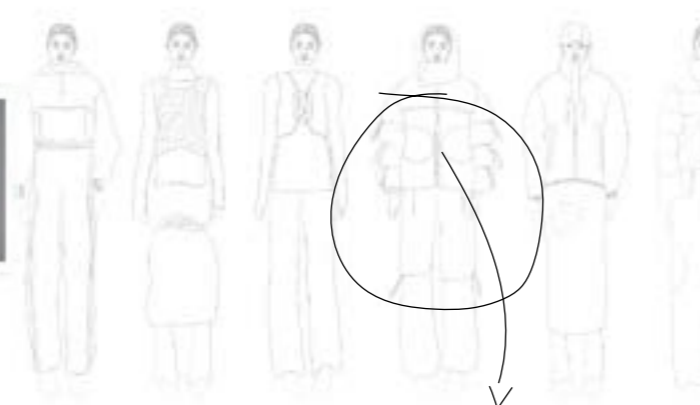


DETACHABLE CIRCULAR POCKET - ZIP TOGETHER TO CREATE FUNCTIONAL BAG



COLOUR PALETTE FOR JACKET - USING CORE DARKER COLOURS WITH A POP OF COLOUR USING ZIPS AND TOP STITCHING

POCKET PLACEMENT EXPERIMENTATION - CHECKING PLACEMENT OF POCKETS ENSURING THEY ARE FUNCTIONAL AND COMFORTABLE FOR WEARER TO USE



FINAL JACKET DESIGN

CREATED A DOUBLE CENTRE FRONT ZIP USING THE ULTRA SONIC WELDER MACHINE. CREATED A STRONG BOND FOR ZIP SUITABLE FOR A FUNCTIONAL GARMENT, AS WELL AS INNOVATIVE FEATURE ON ZIP.



TOILING PROCESSES OF MY PUFFER JACKET. STARTING FROM USING AN OVERSIZED BLOCK, ADDING IN VOLUME TO THE BODY TO CREATE MY DESIRED SILHOUETTE. USING ELASTICATED PANELS ON THE SLEEVES TO CREATE AN ADJUSTABLE SHAPE THAT THE WEARER CAN ADAPT.

FINAL JACKET DESIGN

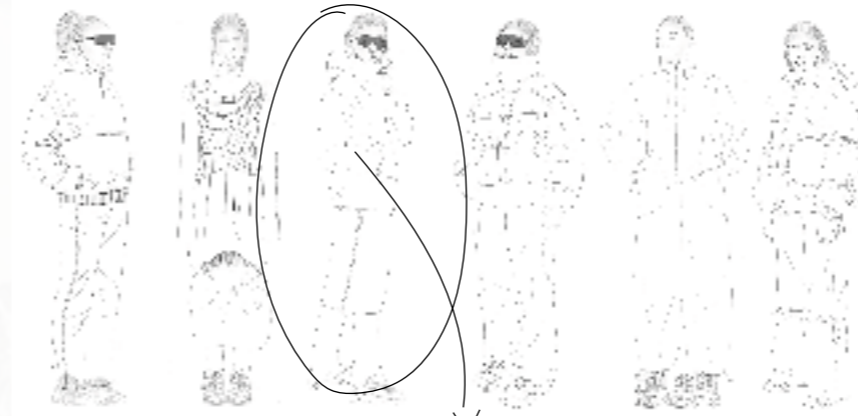


FUNCTIONAL HOOD DESIGN



TECHNICAL JACKET DEVELOPMENT

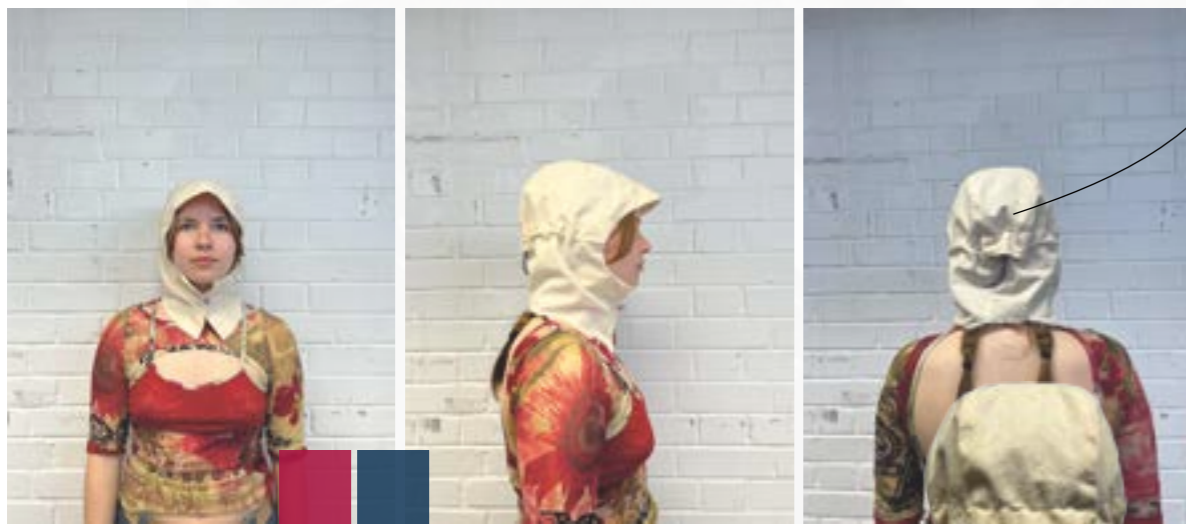
FROM MY PRIMARY AND SECONDARY RESEARCH I DESIGNED A TECHNICAL SHELL JACKET THAT INCORPORATES ASPECTS OF MY CONCEPT AND USES INNOVATIVE TECHNIQUES AND FABRICS. THIS JACKET INCLUDES AN ADJUSTABLE TECHNICAL HOOD, LARGE WELT POCKETS TO THE FRONT BODY OF THE JACKET. FURTHERMORE, THE JACKET IS MADE FROM A WATERPROOF FABRIC, THAT IS DURABLE AND INSULATING. THE JACKET INCORPORATES FUNCTIONAL AND PRACTICAL ASPECTS FOR THE WEARER.



FINAL JACKET DESIGN



TECHNICAL HOOD DEVELOPMENT

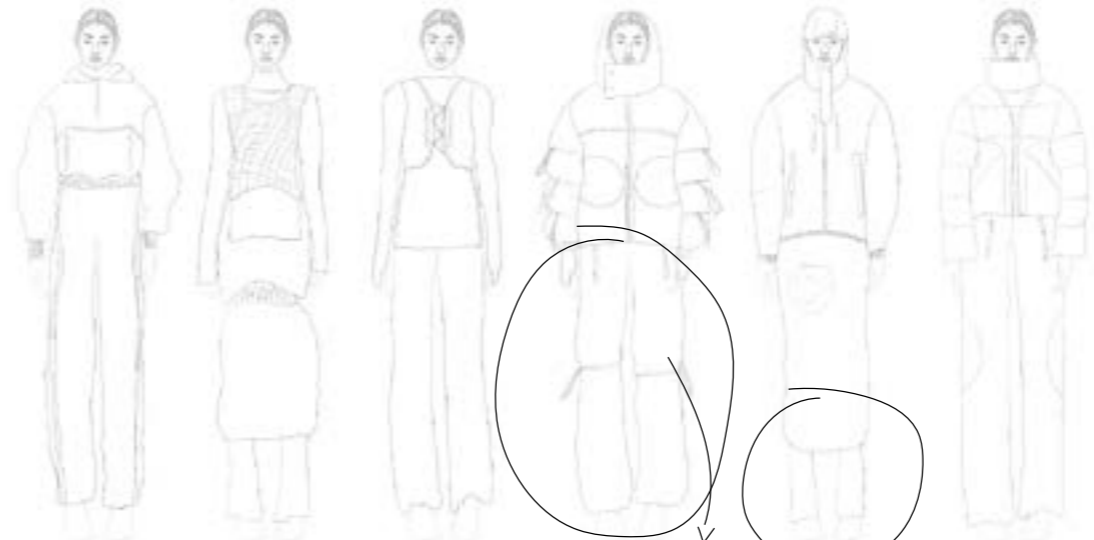


COLOUR PALETTE FOR JACKET - USING BOLD COLOUR FOR THE MAIN BODY OF THE JACKET AND DARKER COLOUR FOR THE ZIPS AND TOP STITCHING

WELT POCKET DESIGN TO FRONT OF JACKET. USING A LARGE POCKET BAG TO ENSURE THE JACKETS FUNCTIONALITY FOR THE WEARER.



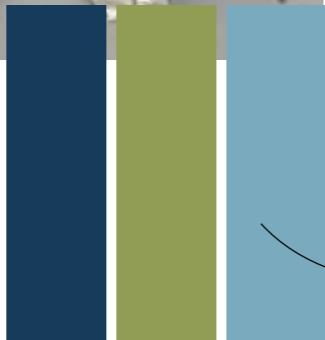
EXPERIMENTING WITH VARIOUS POCKETS ON MY TROUSERS. I ATTEMPTED TO REPLICATE THE SAME CIRCULAR POCKETS I USED ON MY PUFFER JACKET. HOWEVER, WHEN ON THE TROUSERS IT CAUSED THE TROUSER SILHOUETTE AND SHAPE TO DISTORT. AS A RESULT OF THIS I DECIDED TO CHANGE MY POCKET DESIGNS TO ZIP POCKETS. THIS STILL PROVIDING FUNCTIONALITY TO THE TROUSERS WITHOUT DISTORTING THE SHAPE.



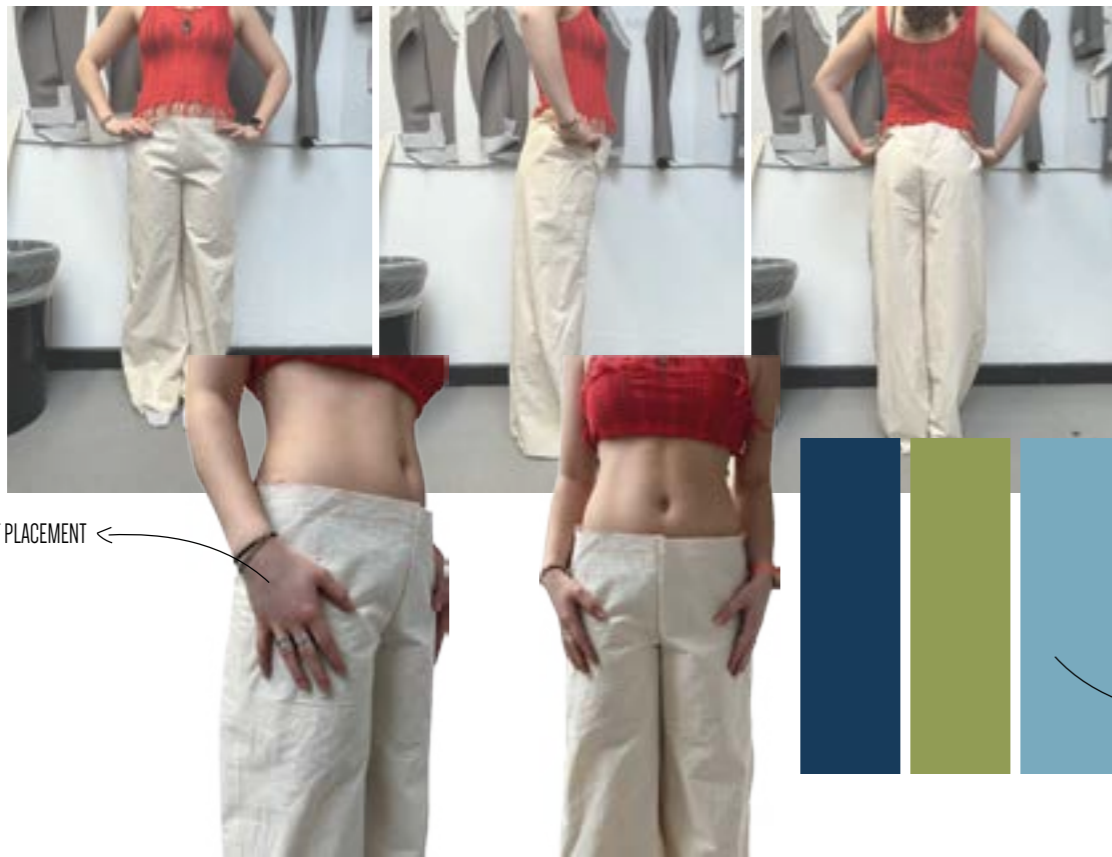
TROUSER DEVELOPMENT

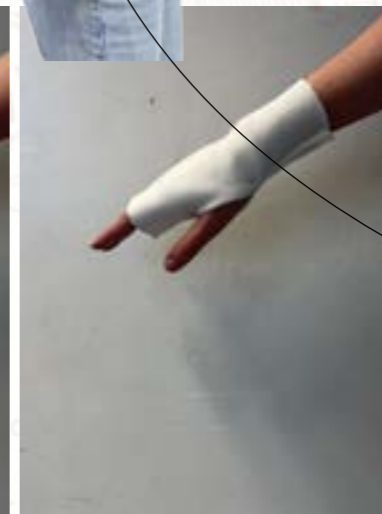
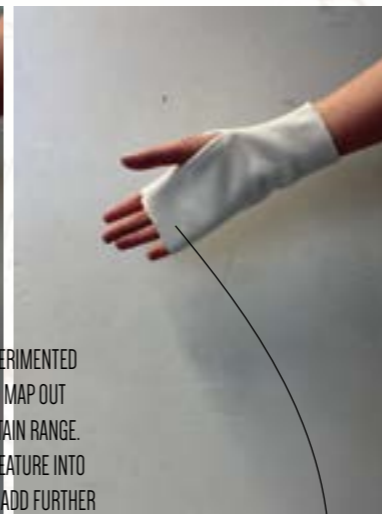
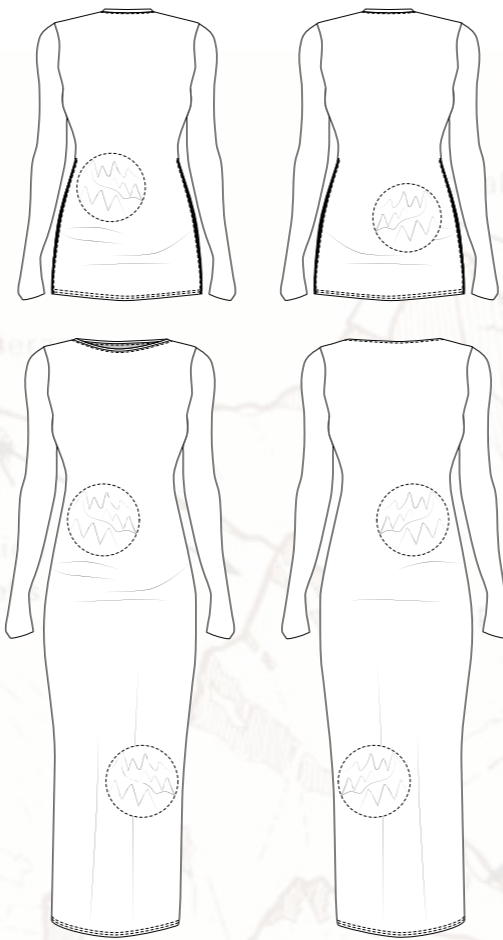
WITHIN MY COLLECTION I DESIGNED VARIOUS FUNCTIONAL TROUSERS, INCORPORATING ASPECTS OF FUNCTIONALITY AND INNOVATION THROUGH THE FABRIC CHOICES AND USE OF POCKETS AND FASTENINGS. WHEN MAKING MY COLLECTION I DECIDED TO MAKE TWO PAIRS OF TROUSERS. A WATERPROOF, TECHNICAL TROUSER AND A PAIR OF STRETCH JERSEY TROUSERS TO SIDE UNDER A DRESS. BOTH TROUSERS INCORPORATED ASPECTS OF FUNCTIONALITY THROUGH THE USE OF INNOVATIVE MATERIALS, USE OF POCKETS AND INNOVATIVE SILHOUETTES.

COLOUR PALETTE FOR MY TROUSER DESIGNS - I SELECTED A BOLDER COLOUR PALETTE FOR THE TROUSERS. THIS ADDED A POP OF COLOUR INTO THE COLLECTION



POCKET PLACEMENT ←





TOP AND DRESS DEVELOPMENT

IN MY COLLECTION, I DESIGNED A STRETCH JERSEY LONG SLEEVE TOP AND DRESS. WITHIN THESE DESIGNS I INCORPORATED MY CONCEPT OF "FUNCTIONAL BEINGS" THROUGH THE USE OF FUNCTIONAL FEATURES SUCH AS DOUBLE ENDED ZIPS, THUMB HOLES IN THE SLEEVES AND BY USING A TIGHT STRETCH JERSEY.

WITHIN MY RESEARCH, I EXPERIMENTED WITH SHIRRING ELASTIC TO MAP OUT THE LANDSCAPE OF A MOUNTAIN RANGE. I HAVE INCORPORATED THIS FEATURE INTO MY DRESS AND TOP DESIGN TO ADD FURTHER ASPECTS OF MY CONCEPT INTO MY COLLECTION

I FURTHER INCORPORATED ASPECTS OF FUNCTIONALITY INTO MY COLLECTION THROUGH THE USE OF ZIPS. WITHIN MY TOP AND DRESS DESIGN I EXPERIMENTED FURTHER WITH ZIPS, INCORPORATING THEM INTO THE SIDE SEAMS OF BOTH.



TAKING INSPIRATION FROM MY INITIAL COLLAGES FROM MY PRIMARY AND SECONDARY RESEARCH, I DESIGNED A STRETCH JERSEY DRESS AND TOP

TO ADD ADDITIONAL ASPECTS OF FUNCTIONALITY INTO MY COLLECTION, I ADDED THUMB HOLES INTO THE SLEEVES OF MY STRETCH DRESS AND TOP



"FUNCTIONAL BEINGS"

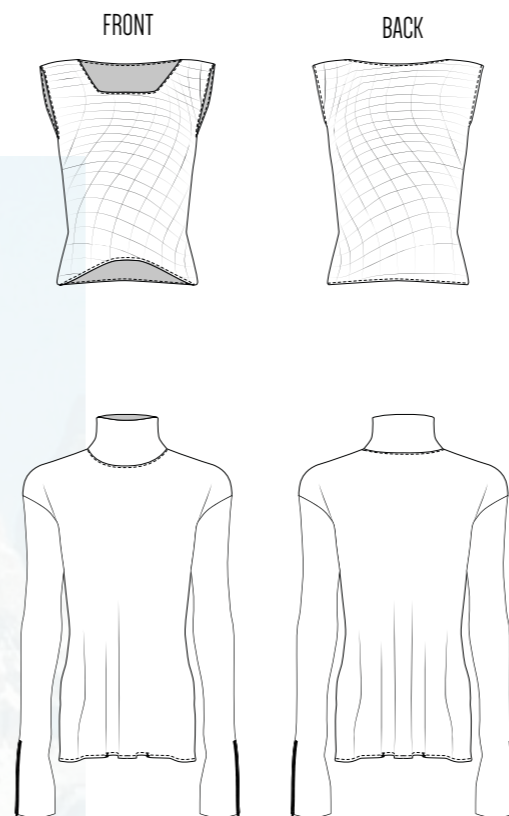
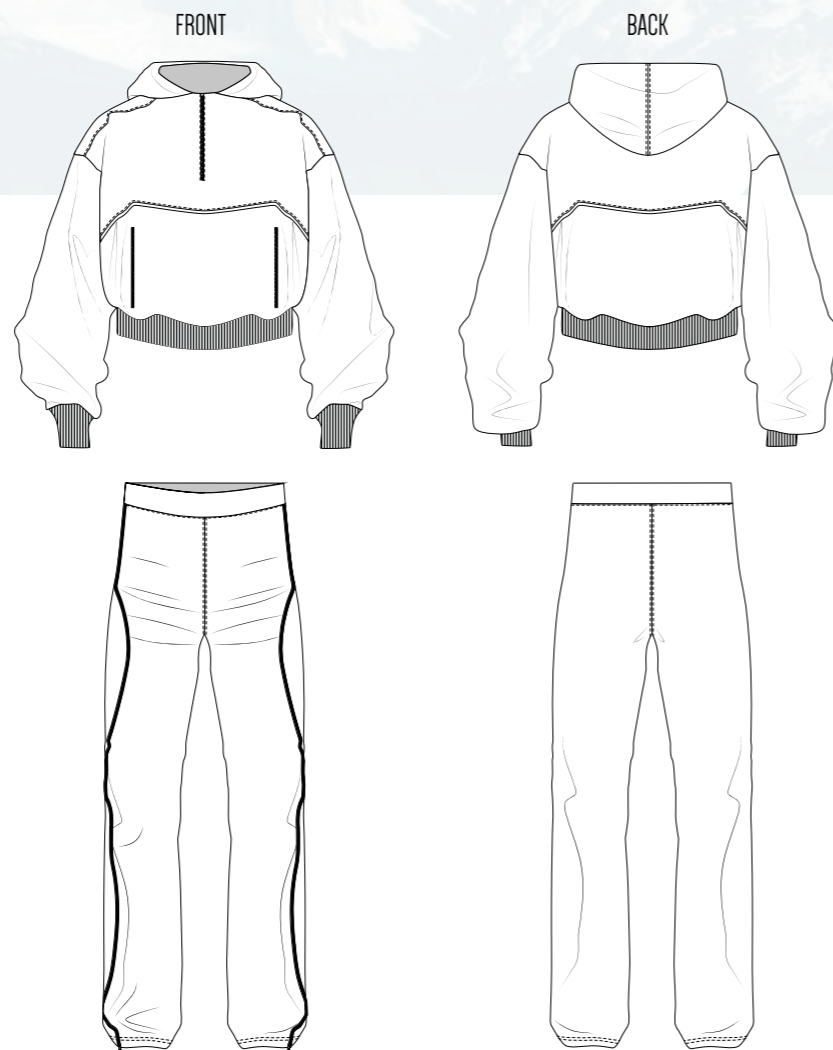
EXPLORING THE IDEAS OF OVER-FUNCTIONALITY BY EXPERIMENTING WITH MATERIALS AND PROCESSES TO CREATE INNOVATIVE GARMENTS.





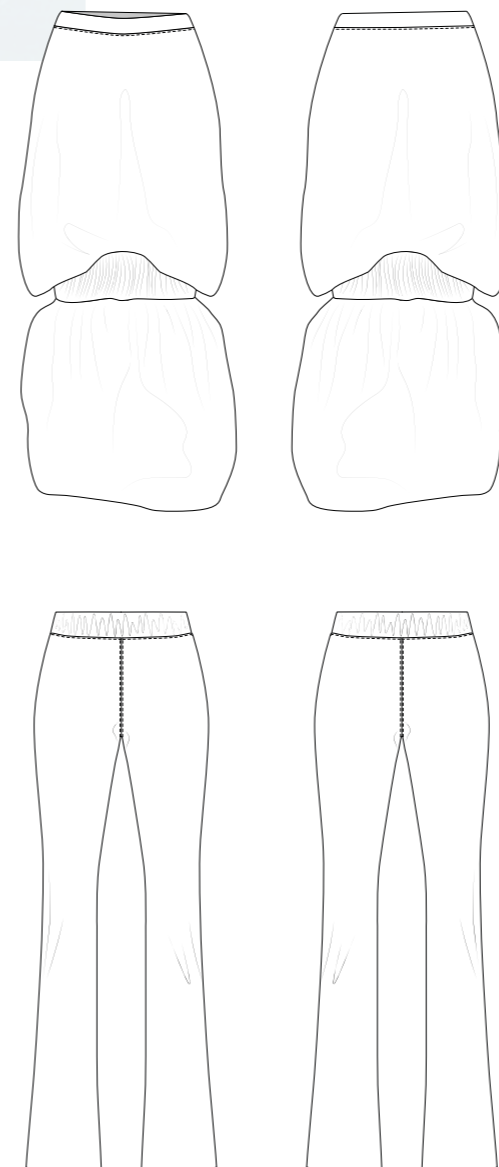
OUTFIT ONE

THE OUTFIT CONSISTS OF AN OVERSIZED, CROPPED HOODIE WITH A CENTRE FRONT ZIP OPENING AND TWO ZIP WELT POCKETS TO THE FRONT BODY. THE HOODIE HAS CONTRAST STITCH DETAILING AND HAS A RIBBED CUFF AND HEM AND IS MADE FROM A HEAVY WEIGHT JERSEY FABRIC, PROVIDING COMFORT AND INSULATION TO THE WEARER. THE OUTFIT ALSO FEATURES A PAIR OF STRAIGHT LEG, TECHNICAL TROUSERS. THE TROUSERS HAVE A CONTRAST DOUBLE ENDED ZIP DOWN EACH OUTER LEG SIDE SEAM, PROVIDING INCREASED MOVEMENT AND FUNCTIONALITY FOR THE WEARER. THE TROUSERS ARE MADE FROM A WATERPROOF, TECHNICAL FABRIC, PROVIDING FUNCTIONALITY TO THE GARMENT.



OUTFIT TWO

THE OUTFIT CONSISTS OF TEXTURED PADDED VEST, MADE USING WATERPROOF FABRIC, WADDING AND SHIRRING ELASTIC TO CREATE TEXTURED APPEARANCE. A LONG SLEEVE TOP WITH A HIGH NECK, ZIP OPENINGS TO CUFFS MADE FROM A LIGHTWEIGHT JERSEY FABRIC THAT PROVIDES COMFORT AND BREATHABILITY TO WEARER. THE OUTFIT ALSO INCLUDES A LONG SKIRT, WITH AN ELASTICATED PANEL CREATING VOLUME AND SHAPE. THE SKIRT IS MADE FROM A LIGHTWEIGHT, WATER RESISTANT FABRIC, PROVIDING FUNCTIONAL TO THE SKIRT. FINALLY THE OUTFIT INCLUDES A PAIR OF STRETCH, JERSEY TROUSERS THAT FLARE OVER THE SHOE. THE TROUSERS INCLUDE AN ELASTICATED WAISTBAND TO PROVIDE COMFORT AND FUNCTION.

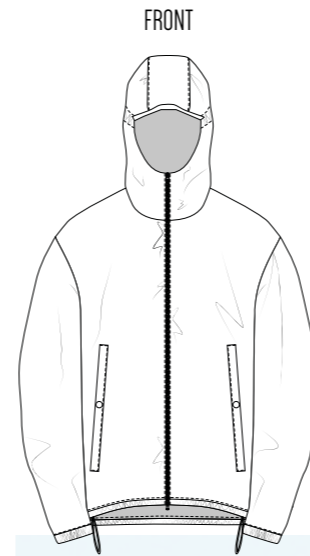
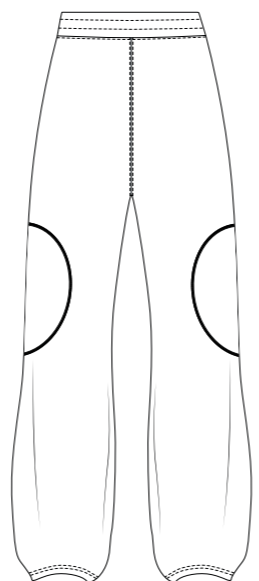
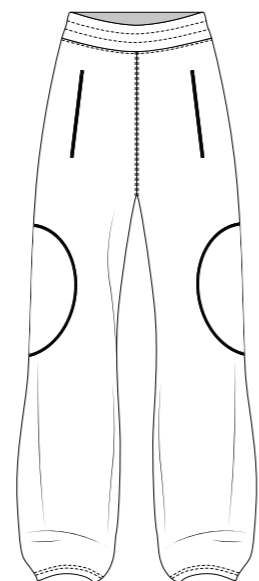
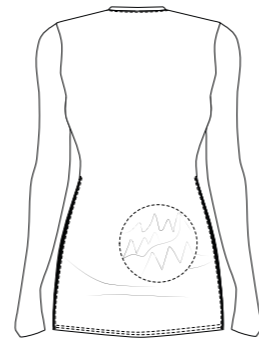
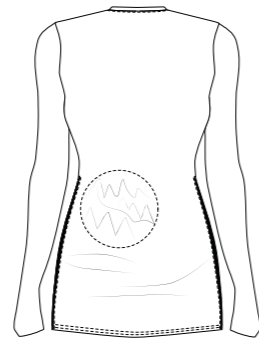


OUTFIT THREE

THIS OUTFIT FEATURES AN OVERSIZED, CROPPED PUFFER JACKET, THAT FEATURES TWO, CONTRAST CENTRE FRONT ZIPS, TWO LARGE ANGLED WELT POCKETS AND A WADDED WRAP OVER COLLAR. THE JACKET IS MADE FROM A WATERPROOF FABRIC AND ITS WADDING PROVIDES THE WEAR WITH INSULATION AND COMFORT. THE OUTFIT ALSO INCLUDES A TIGHT, LONG SLEEVE TOP THAT INCLUDES THUMB HOLES, DOUBLE ENDED ZIP TO EACH SIDE SEAM AND TEXTURED DETAILING SHOWING A MOUNTAIN RANGE USING SHIRRING ELASTIC. THE TOP IS MADE FROM A HEAVY WEIGHT, STRETCH JERSEY. ALSO THE OUTFIT HAS A PAIR OF TECHNICAL TROUSERS THAT INCLUDE DETACHABLE CIRCULAR POCKETS AND TWO ZIP POCKETS TO FROM LEG. THE TROUSERS ARE MADE FROM A WATER RESISTANT FABRIC, PROVIDING FUNCTIONAL ELEMENTS TO THE GARMENT.

FRONT

BACK



FRONT

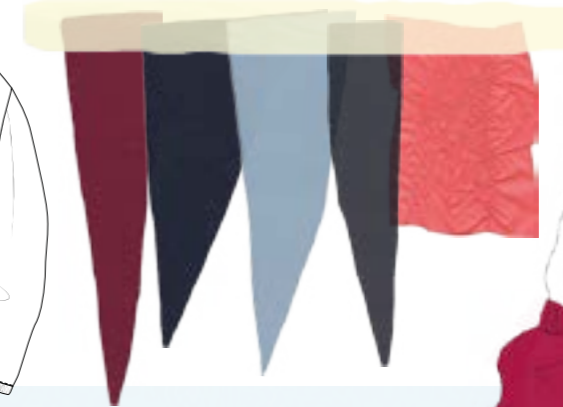


BACK



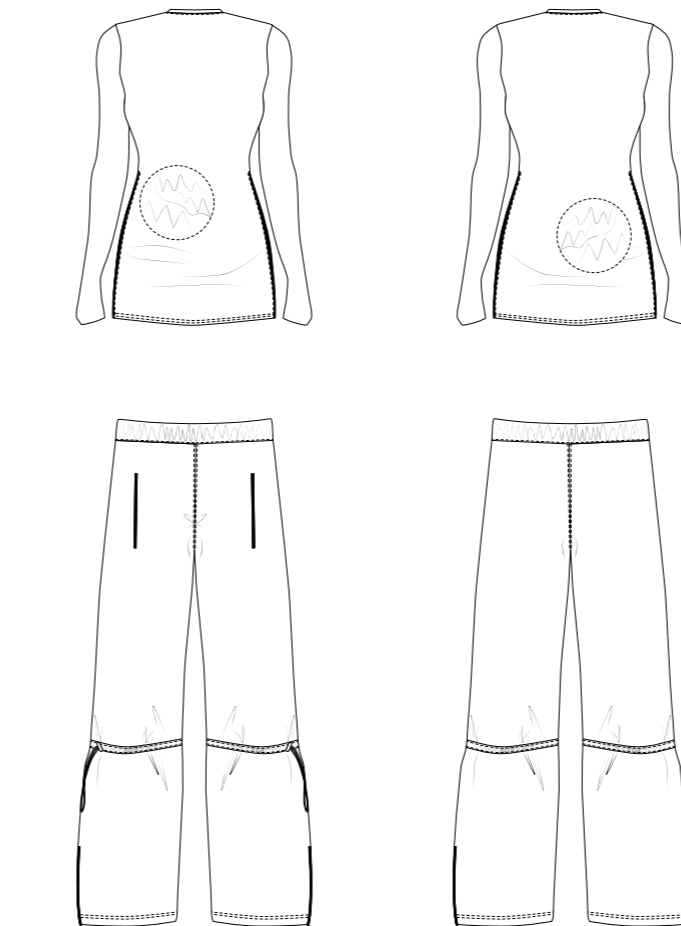
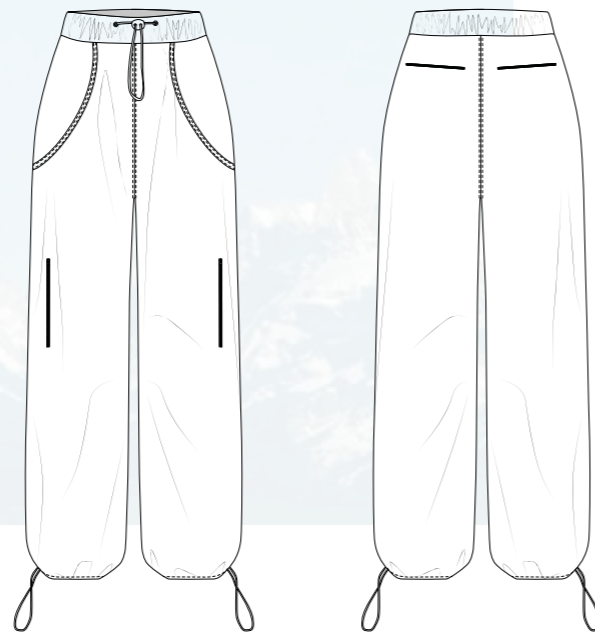
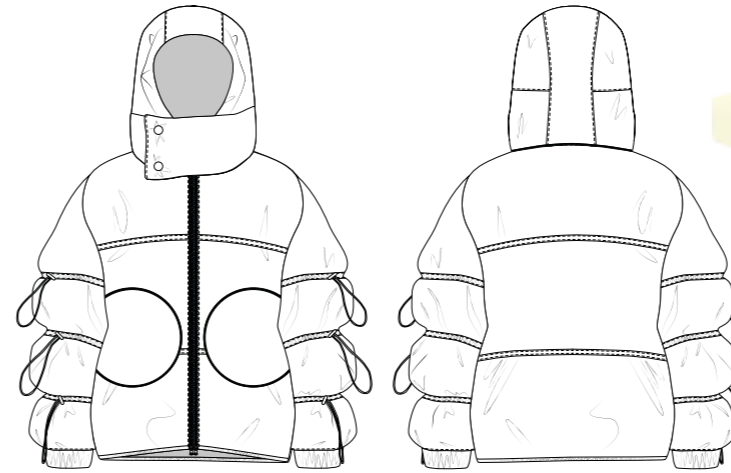
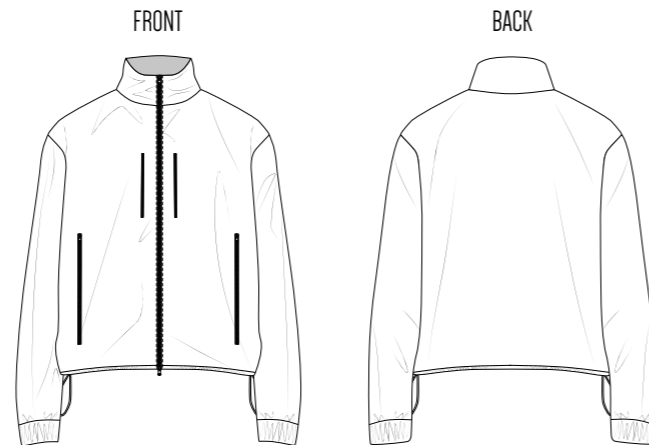
OUTFIT FOUR

THE OUTFIT CONSISTS OF A TECHNICAL SHELL JACKET, THAT INCLUDES A TECHNICAL, ADJUSTABLE HOOD, ELASTICATED CUFFS AND WAISTBAND AND TWO LARGE WELT POCKETS TO THE FRONT BODY. THE JACKET IS MADE FROM A DURABLE, WATERPROOF FABRIC, AND IS LINED WITH A BREATHABLE, TECHNICAL POWER MESH. ALSO THE OUTFIT INCLUDES A TIGHT, LONG SLEEVE, KNEE LENGTH, THAT INCLUDES THUMB HOLES, DOUBLE ENDED ZIP TO EACH SIDE SEAM AND TEXTURED DETAILING SHOWING A MOUNTAIN RANGE USING SHIRRING ELASTIC. THE TOP IS MADE FROM A HEAVY WEIGHT, STRETCH JERSEY. FINALLY THE OUTFIT INCLUDES A PAIR OF STRETCH, JERSEY TROUSERS THAT FLARE OVER THE SHOE. THE TROUSERS INCLUDE AN ELASTICATED WAISTBAND TO PROVIDE COMFORT AND FUNCTION.



OUTFIT FIVE

THE OUTFIT CONSISTS OF A TECHNICAL WATERPROOF L JACKET, THAT INCLUDES AN ADJUSTABLE HEM, ELASTICATED CUFFS AND WAISTBAND AND TWO LARGE ZIP POCKETS TO THE FRONT BODY. THE JACKET IS MADE FROM A DURABLE, WATERPROOF FABRIC, AND IS LINED WITH A BREATHABLE, TECHNICAL POWER. ALSO THE OUTFIT HAS A PAIR OF TECHNICAL TROUSERS THAT INCLUDE CIRCLE POCKETS TO FRONT WITH CONTRAST TOP STITCHING. THE TROUSERS ALSO INCLUDE TWO ZIP POCKETS TO THE LOWER LEG, AND ADJUSTABLE TOGGLE WAISTBAND AND ADJUSTABLE ELASTICATED CUFFS. THE TROUSERS ARE MADE FROM A WATERPROOF, TECHNICAL FABRIC THAT PROVIDES FUNCTION AND DURABILITY TO THE WEARER.



OUTFIT SIX

THIS OUTFIT IS AN OVERSIZED, PUFFER JACKET, THAT FEATURES TWO CIRCULAR, DETACHABLE POCKETS, A WADDY DETACHABLE HOOD, ADJUSTABLE TOGGLES TO SLEEVES AND HEM AND SELF FABRIC ELASTICATED CUFF. THE JACKET IS MADE FROM A WATERPROOF FABRIC AND ITS WADDING PROVIDES THE WEAR WITH INSULATION AND COMFORT. THE JACKET ALSO HAS A WATERPROOF LINING. THE OUTFIT ALSO INCLUDES A TIGHT, LONG SLEEVE TOP THAT INCLUDES THUMB HOLES, DOUBLE ENDED ZIP TO EACH SIDE SEAM AND TEXTURED DETAILING SHOWING A MOUNTAIN RANGE USING SHIRRING ELASTIC. THE TOP IS MADE FROM A HEAVY WEIGHT, STRETCH JERSEY. ALSO THE JACKET INCLUDES A PAIR OF TECHNICAL TROUSERS, THAT HAVE TWO ZIP POCKETS, ZIP OPENING TO THE HEM AND ELASTICATED TOGGLES TO THE KNEE. THEY ARE MADE FROM A WATER RESISTANT FABRIC, AND HAS A ELASTICATED WAISTBAND.





