



irreal *collection*

FMP portfolio

by

Stella Ollus





My nightmares

My nightmares share similarities with surrealist art. This project explores their correspondance.

irreal (adjective)
ir·re·al

Definition of irreal
: not real

Surrealist art draws inspiration from the unconscious, dreams and nightmares. Methodological tools such as displacement were used to create the “hand-painted dream photographs” (Dali, year n/a).

Unfamiliarity

Distortion

nightmare theme I:
deep seas & sharks

sleep paralysis

contradiction

Recurring dream
sequences with sharks,
deep bodies of water
and sea shores

Displacement

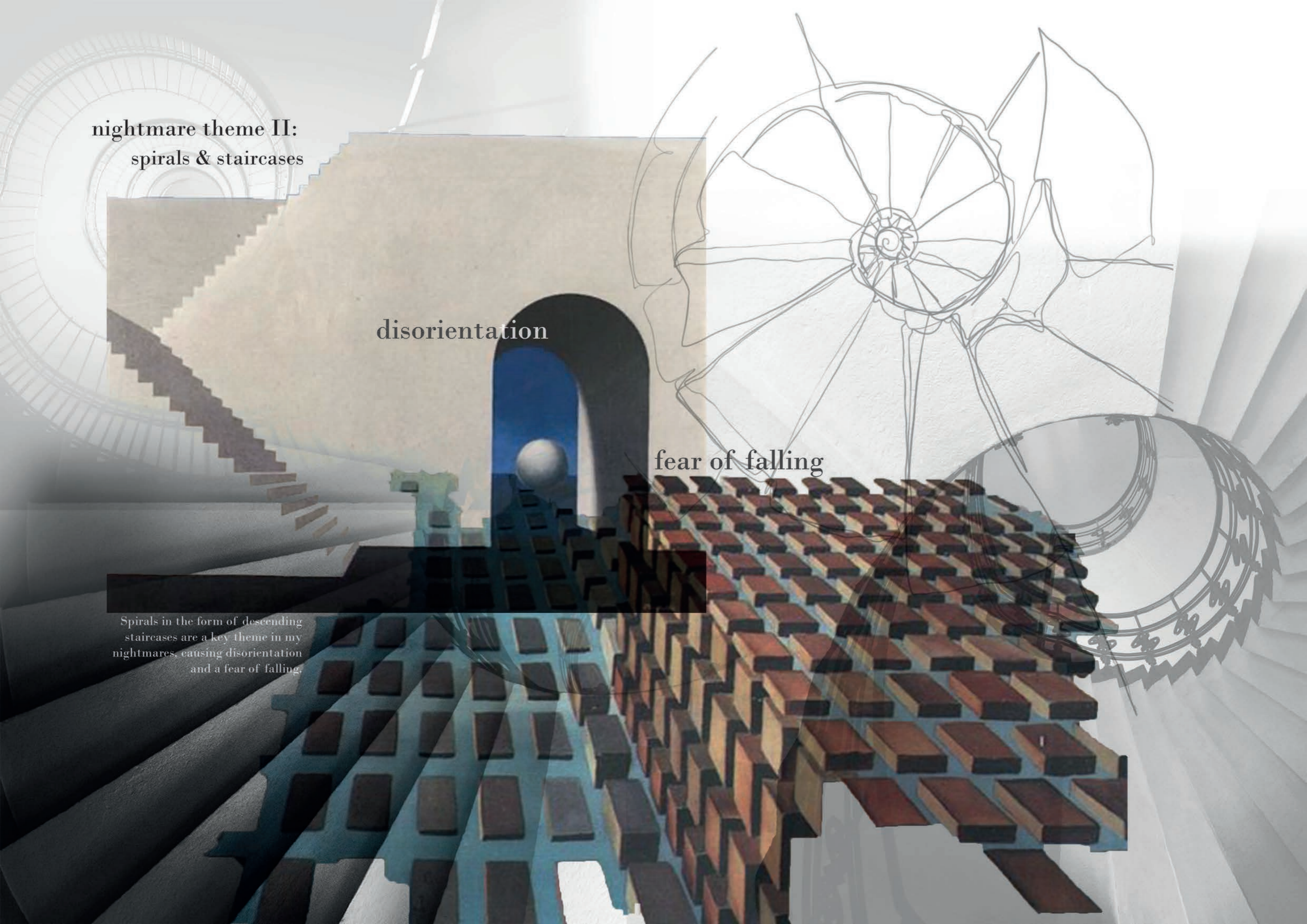
the action of moving something from
its place or position.

nightmare theme II:
spirals & staircases

disorientation

fear of falling

Spirals in the form of descending staircases are a key theme in my nightmares, causing disorientation and a fear of falling.



nightmare theme III:

the viper

:the venomous snake native to Finland

Surreal
adjective

having the qualities of surrealism; bizarre



crawling

scales

zig-zag pattern

Viper snakes are the only dangerously venomous threat in my homecountry, thus seeing the zig-zag is quite horror inducing both in reality and 'surreality'. Herds of vipers appear in my dreams regularly for some reason, hence the snakes symbolising this collection.



Leather coat with lapel detail inspired by the stairs of a spiralling staircase.



The hourglass shape was important so silhouette was altered to have more shape and volume in the hem and in the oversized, rounded sleeves.



Spiral staircase inspired lapel detail

Decided shape



initial jacket development

Jacket trilling



Samples made with leather off-cuts and B-grade leather showing the laser engraving techniques. Viper inspired button loop trim was used throughout the design as detailing as well as a functioning fastening.



Staircase inspired "bolero"

'Bolero' is designed to have minimal sewing and pattern cutting. It is designed to be worn in two different ways.



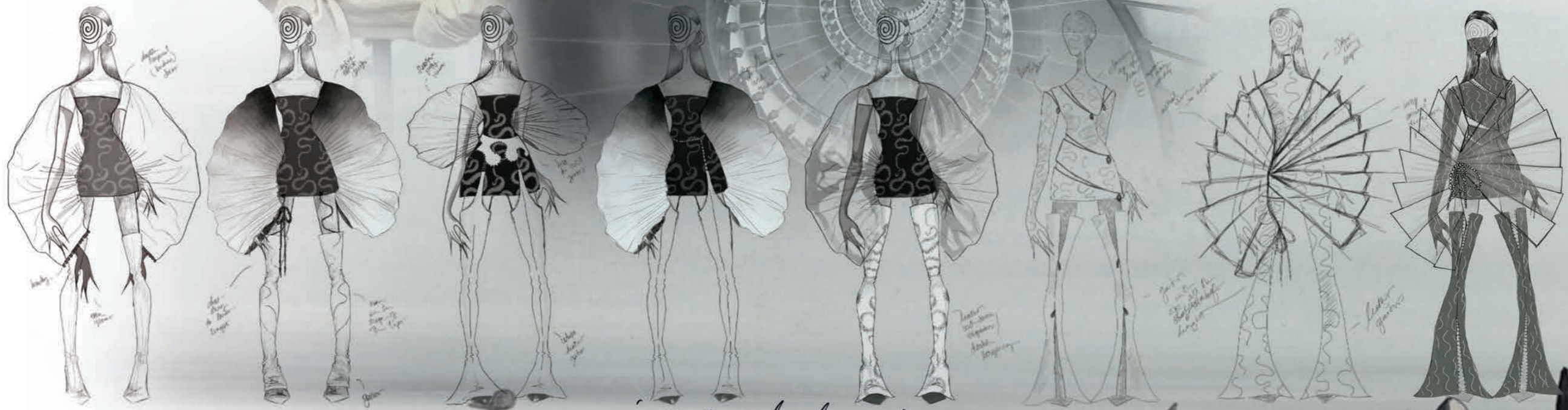
The pleated organ-die is ombre dyed after construction to reminisce a dreamlike atmosphere.

rounded shape

lace up detail

Staircase inspired pleating detail & construction

ombred dyed organ-die sample



Initial development

Design development of look VI's pleated, organ-die 'bolero'.

Design is inspired by a spiralling staircase which is re-occurring in my nightmares.



Cotton denim

Polyester linings

button loop trim

Off-cut and B-grade lamb nappa

Donated deadstock polyester mesh

Donated deadstock jersey

100% cotton organdie, ombre dyed

Leather cord

Cotton denim

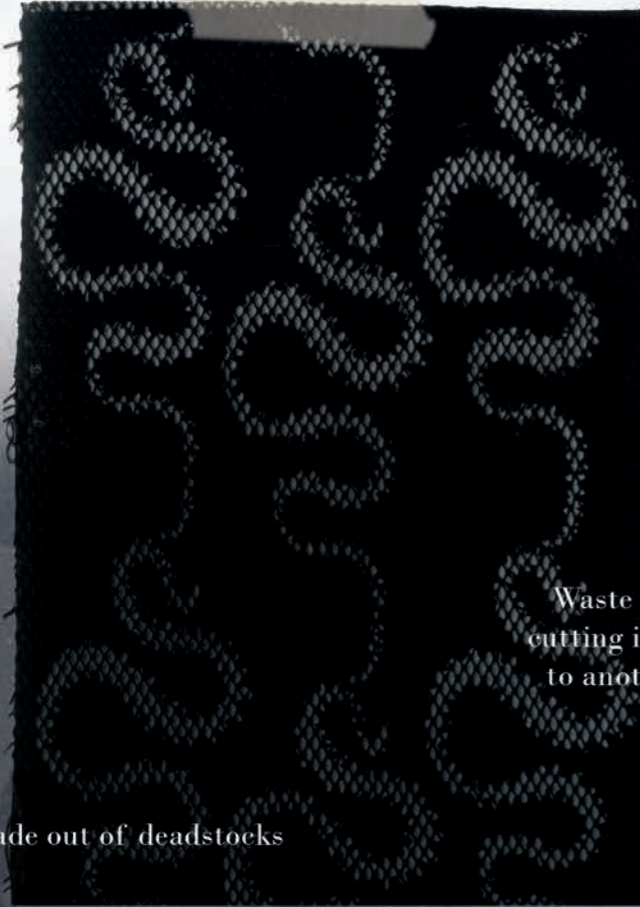
Emperor silk, ombre dyed

Colour palette



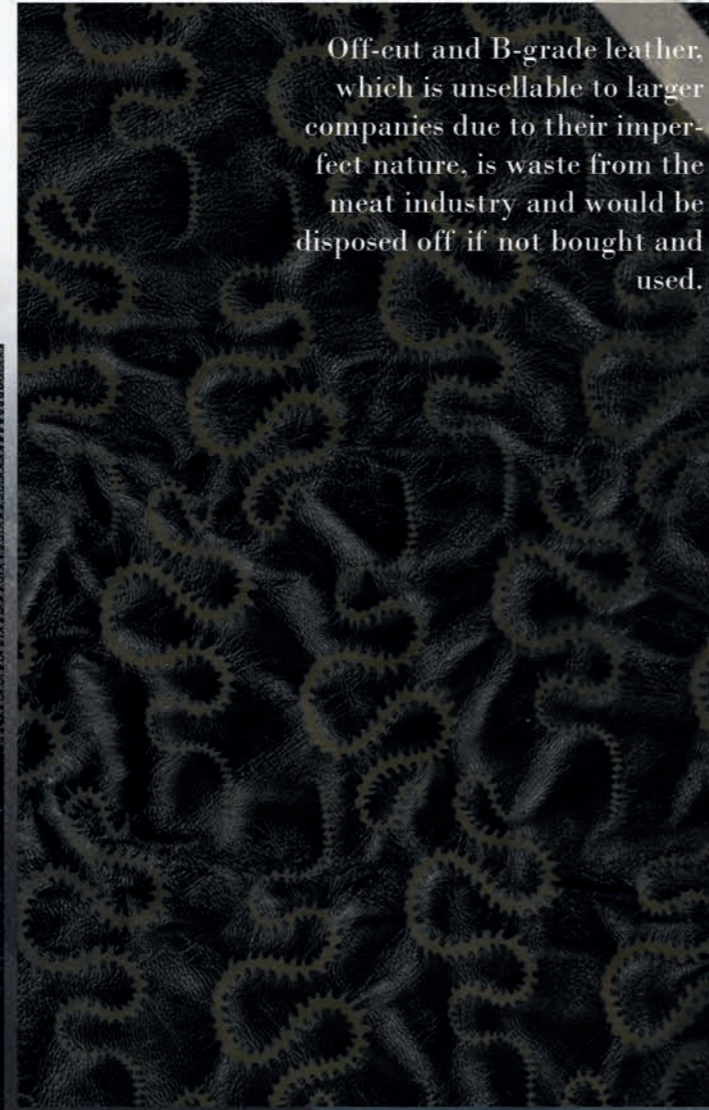
Material processes

Sustainable approaches

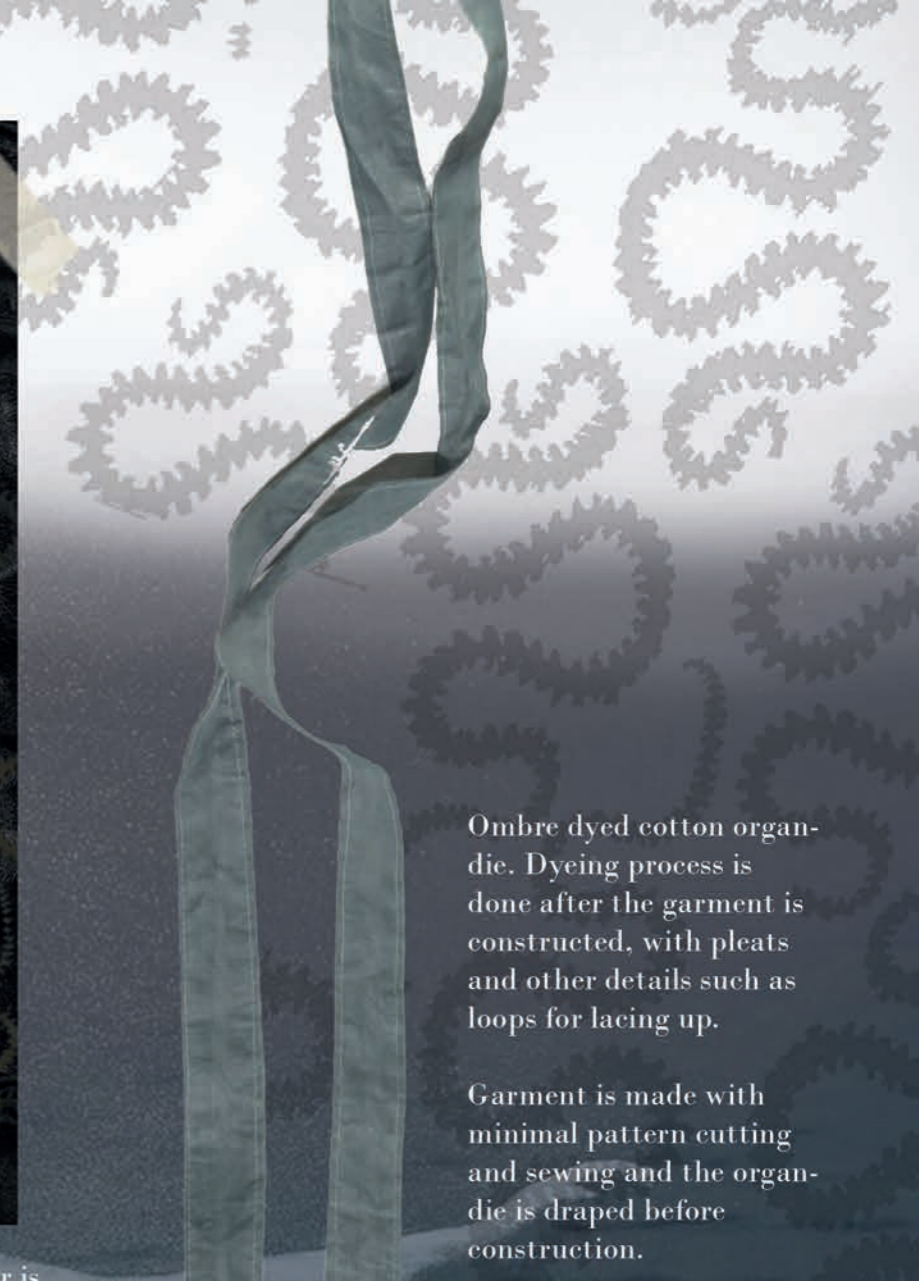


Waste from laser cutting is bonded on to another fabric.

As a byproduct of the meat industry, leather is natural waste that is durable and more environmentally conscious than faux leathers that contribute to pollution from the plastic industry.



Off-cut and B-grade leather, which is unsellable to larger companies due to their imperfect nature, is waste from the meat industry and would be disposed off if not bought and used.



Ombre dyed cotton organ-die. Dyeing process is done after the garment is constructed, with pleats and other details such as loops for lacing up.

Garment is made with minimal pattern cutting and sewing and the organ-die is draped before construction.



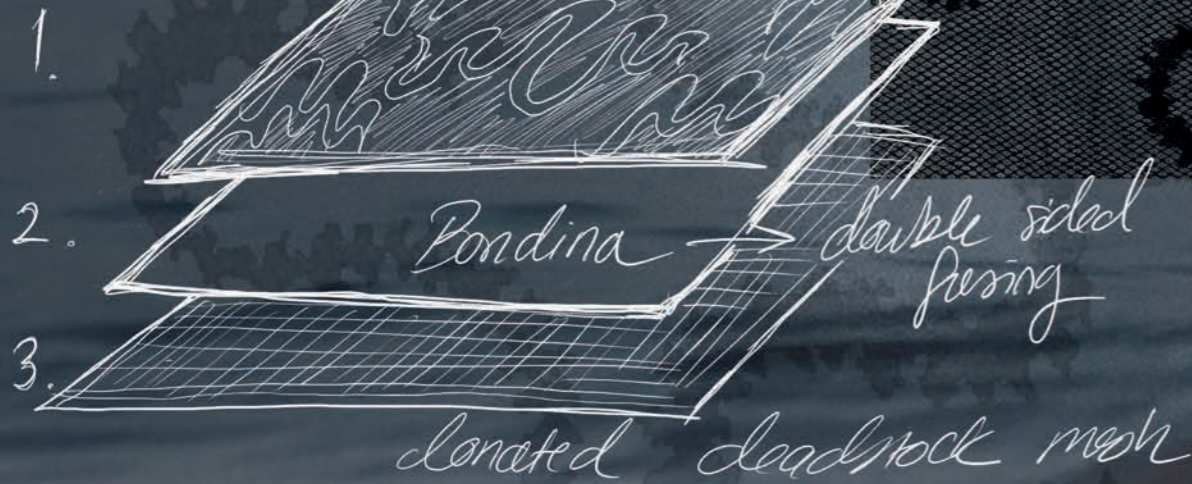
Off-cuts or B-grade leather is laser engraved with the Viper monogram print. Due to the imperfect, uneven nature of the leather, some pieces are backed up and supported with fusing. The engraving hides the uneven textures of the B-grade leather skins, but too uneven pieces are used in facings and in other non-visible parts.



Laser engraving on cotton denim.

A new fabric made out of deadstocks

laser cut dead stock



From donated deadstock fabrics a new fabric is made:

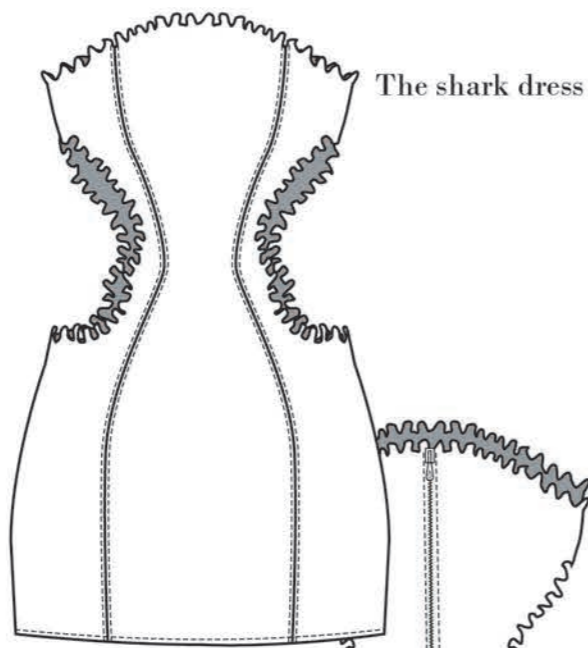
1. deadstock jersey fabric is laser cut. Before being laser cut a bondina (double sided fusing) is heatpressed onto the jersey.
2. the protective paper is removed from the bondina side..
3. the deadstock mesh is heat presser/ironed on top of the glue side of the laser cut jersey fabric.

The Irreal collection lineup

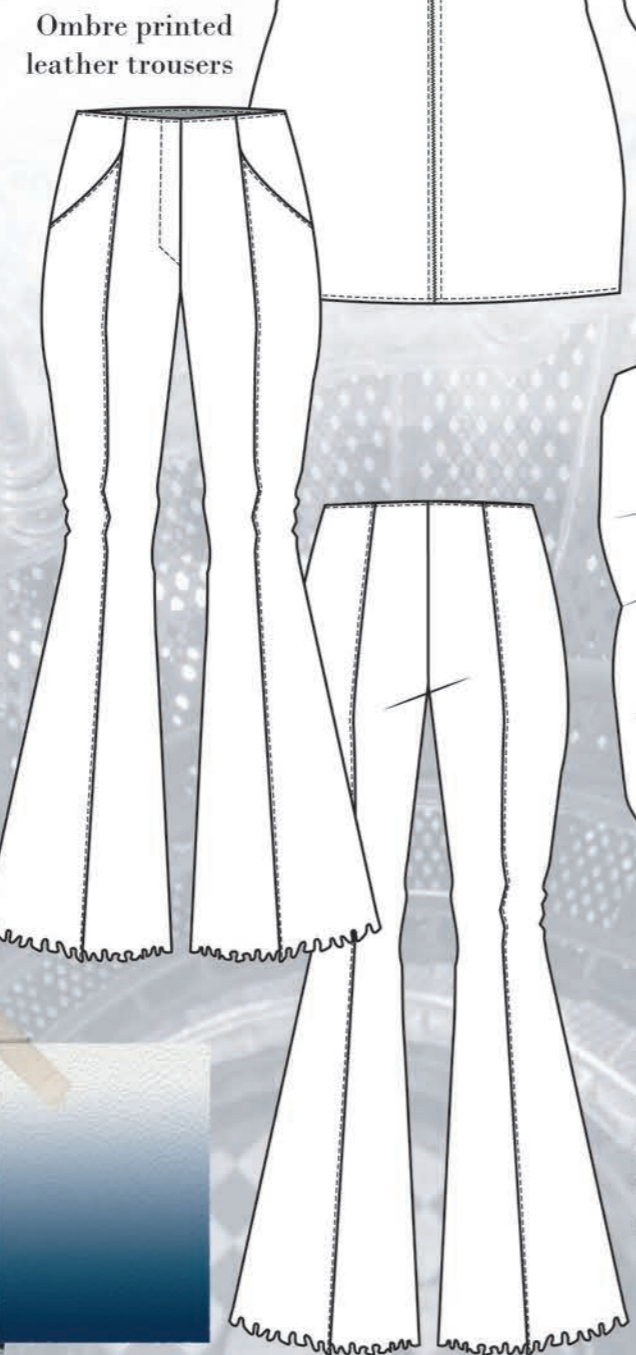


range plan



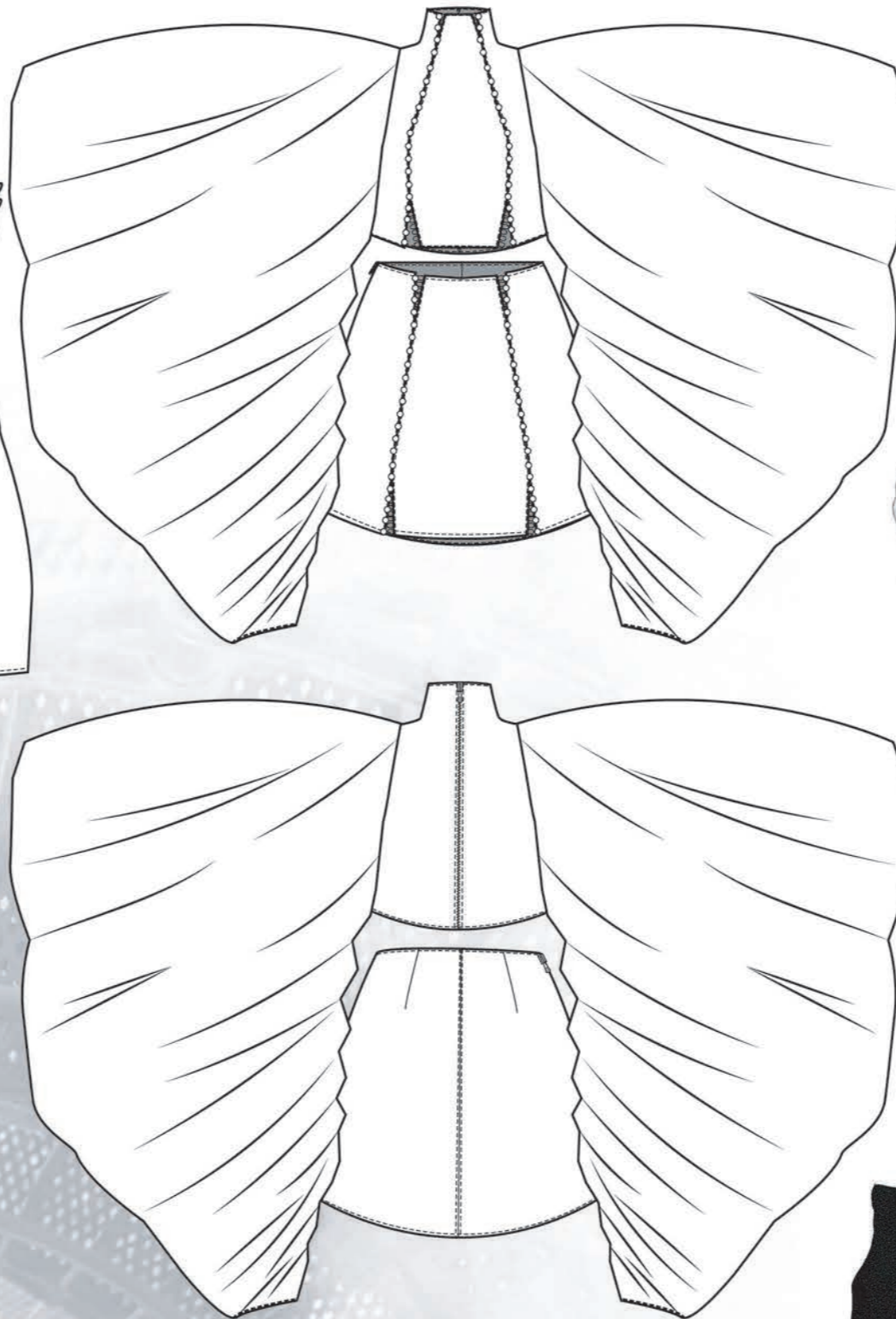


The shark dress



Ombre printed leather trousers

A leather set with pleated organdie sleeves

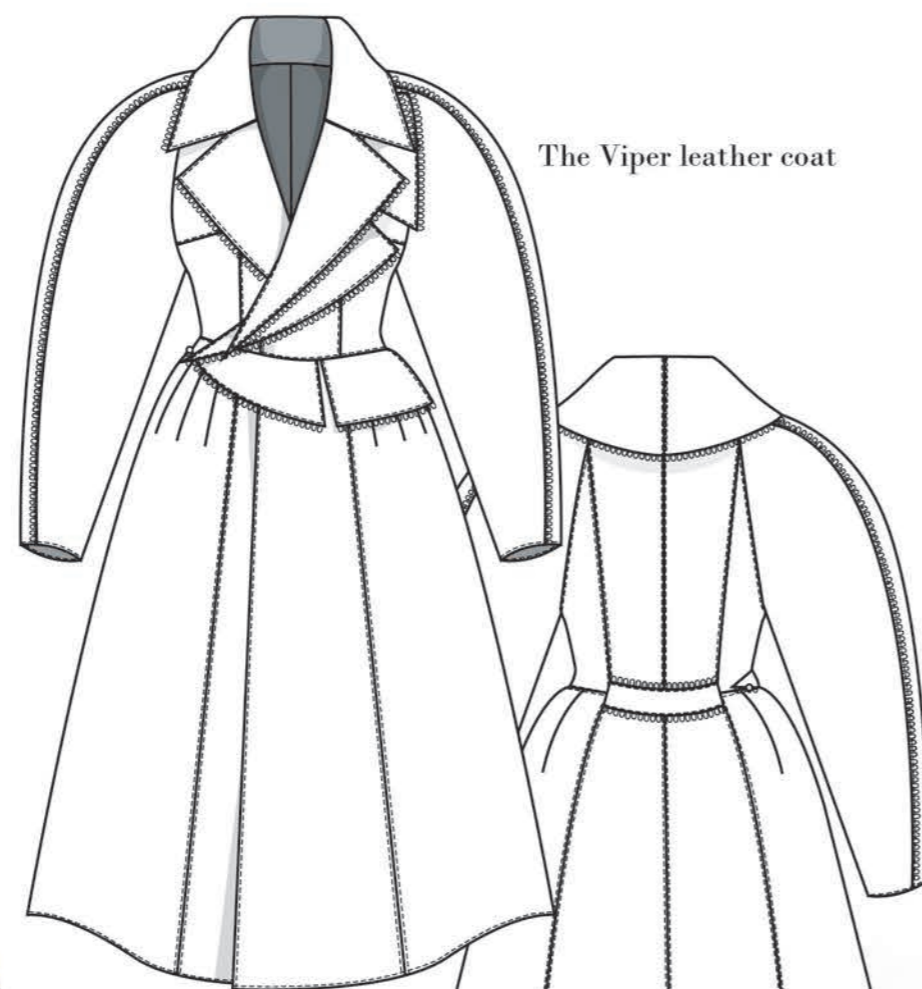


Leather top and skirt set with buttonloop and button details

Materials consist of laser engraved cotton denim and ombre printed off-cut/B-grade lamb nappa

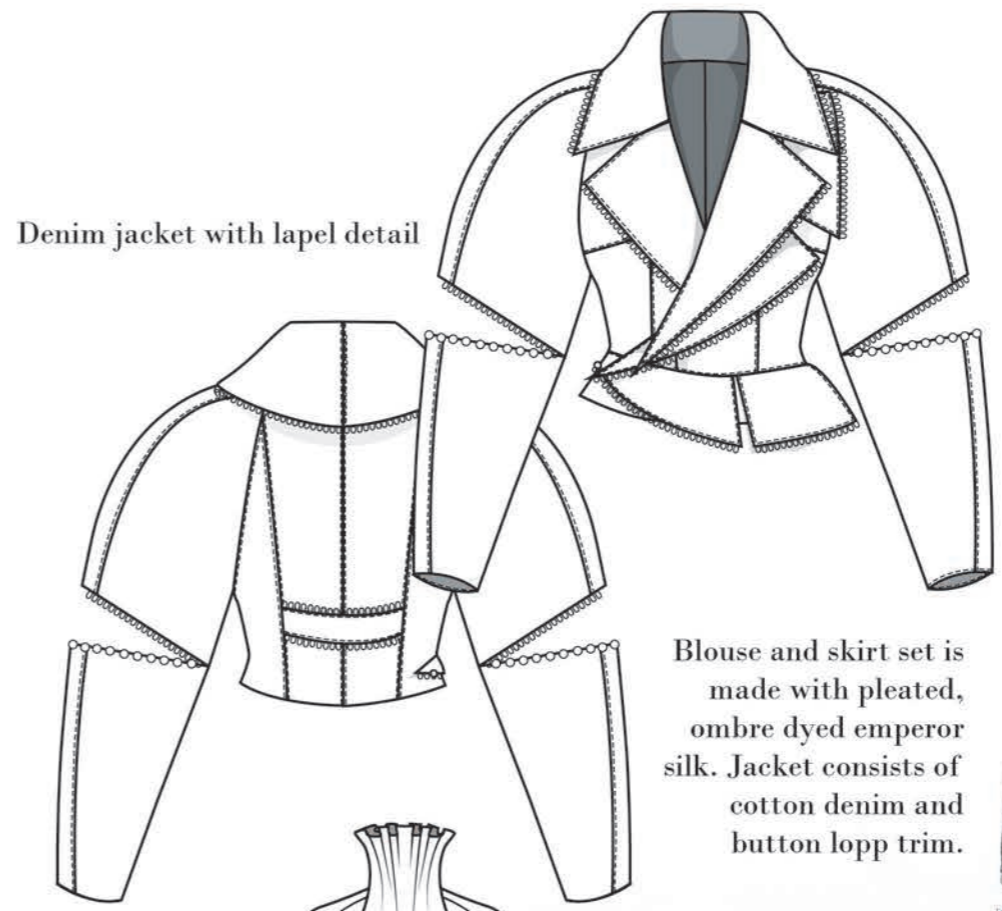
Top and skirt set are made out of B-grade/off-cut lamb nappa leathers with button loop details and leather covered buttons. Oversized sleeves are pleated, ombre dyed organdie.





The Viper leather coat

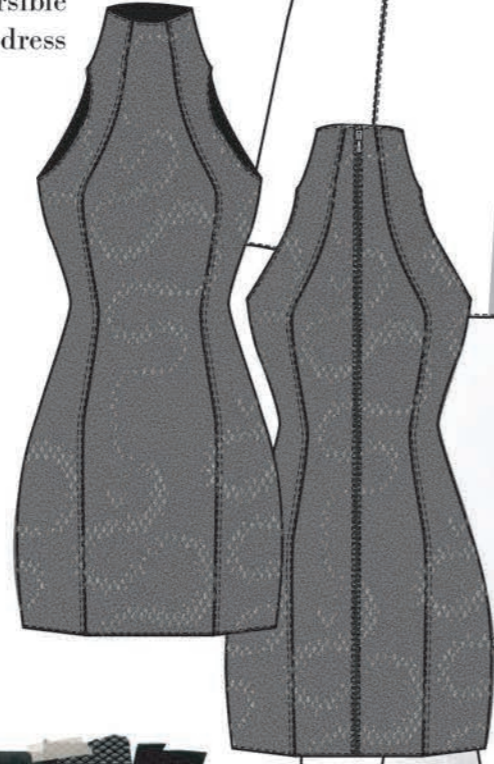
The Reversible viper dress



Denim jacket with lapel detail

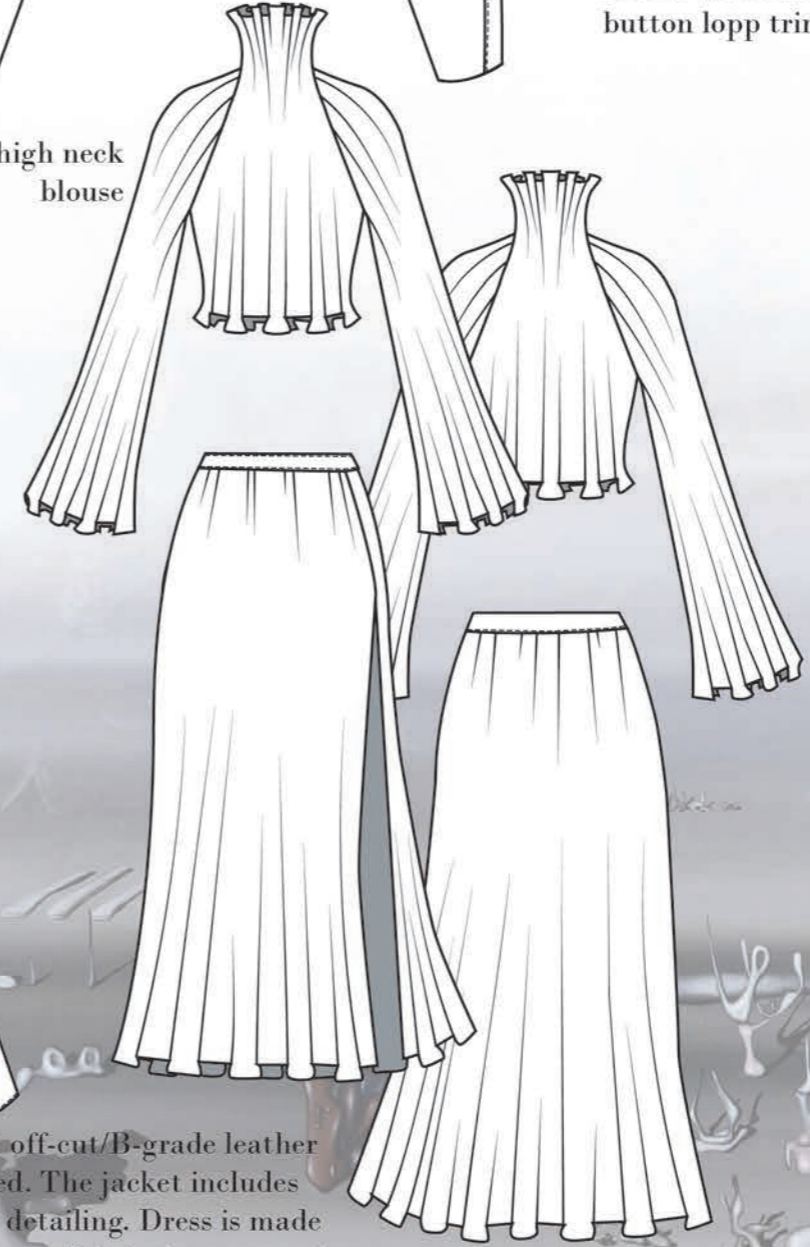
Pleated high neck blouse

Blouse and skirt set is made with pleated, ombre dyed emperor silk. Jacket consists of cotton denim and button lopp trim.



The Gaitors

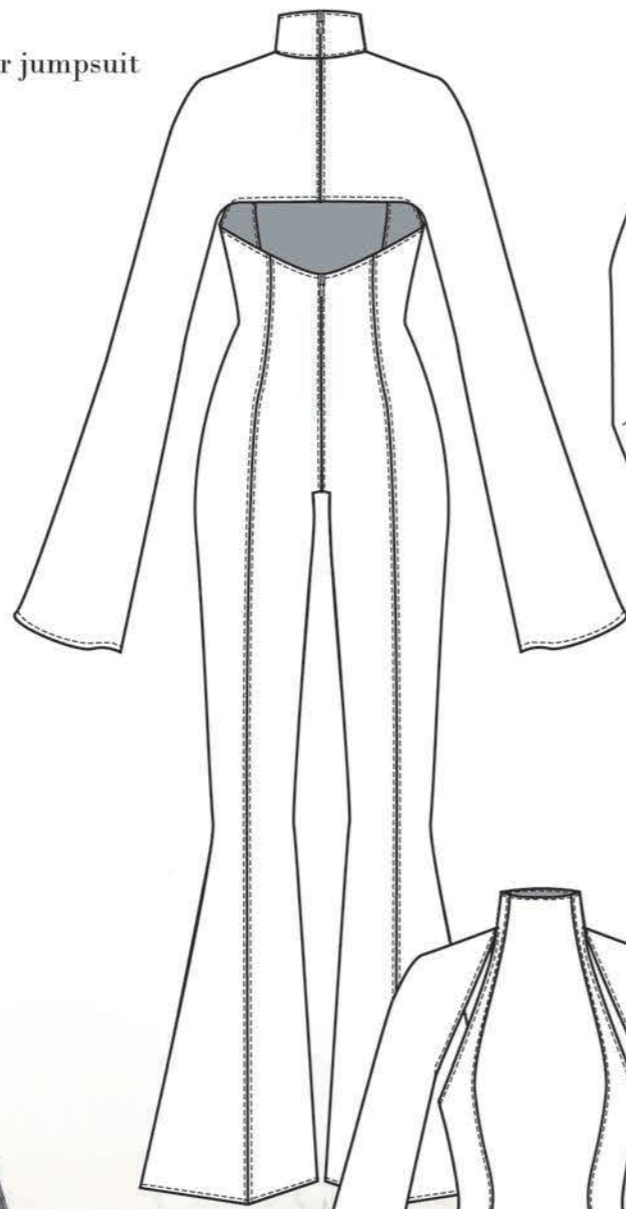
Coat is made out of off-cut/B-grade leather that is laser engraved. The jacket includes button lopp trim as detailing. Dress is made with donated deadstock fabrics lasercut and combined into a new fabric. Gaitors consist of the same fabrics.



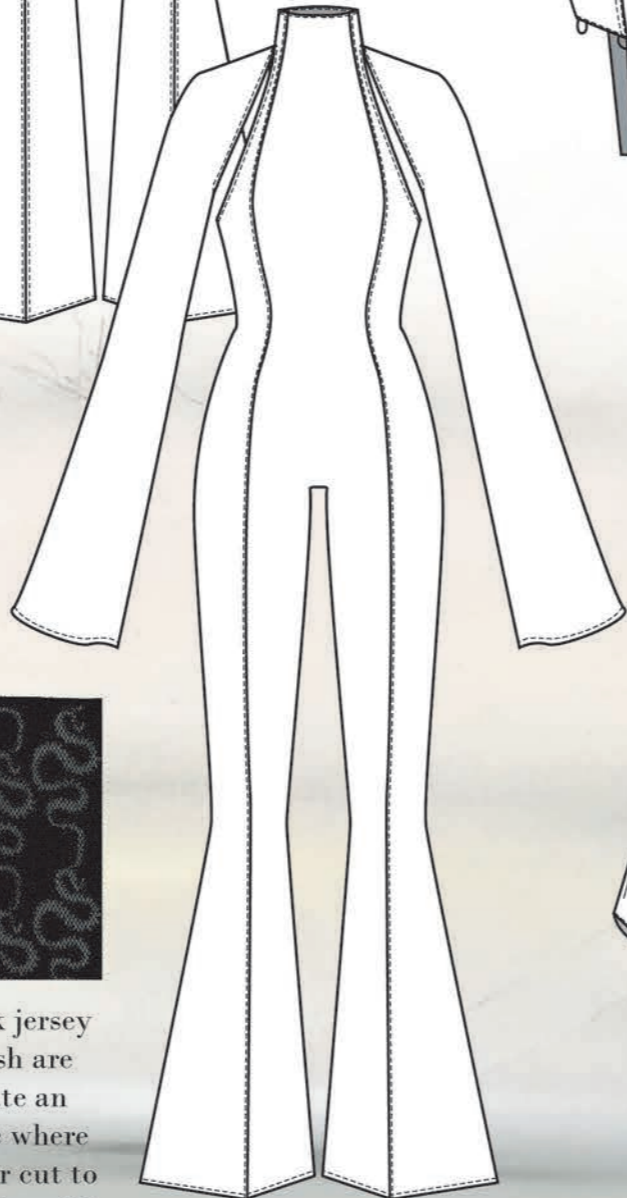
Pleated midi skirt with slit



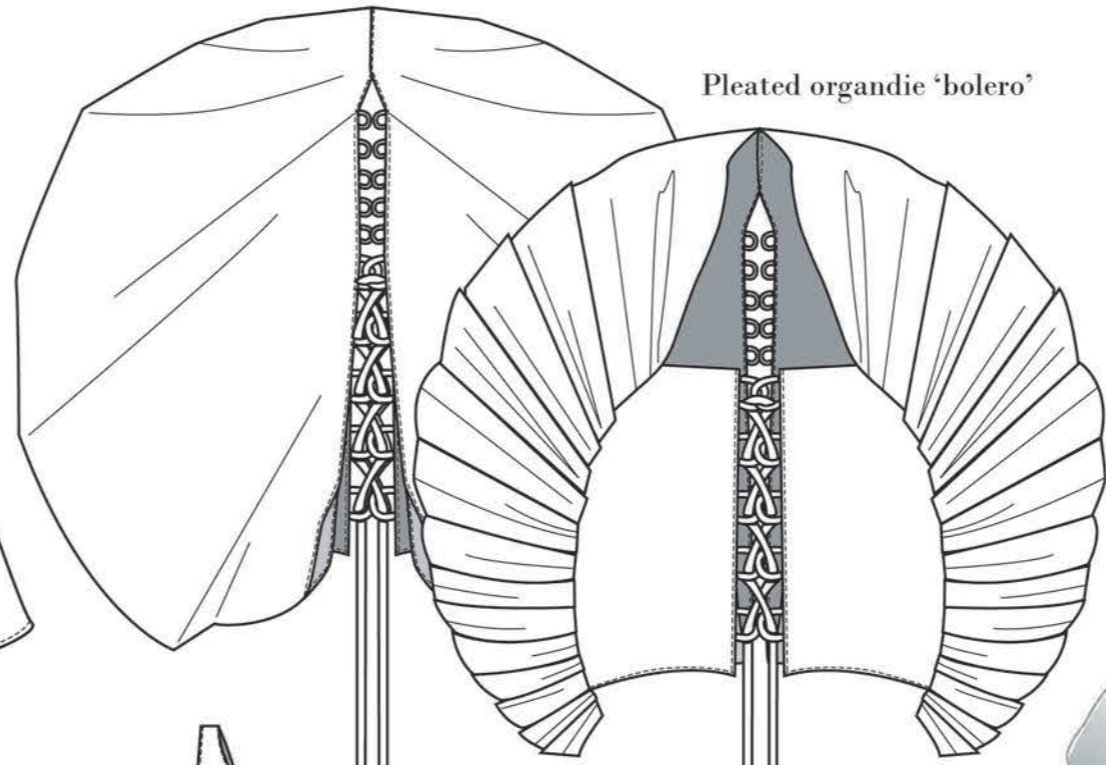
The Reversible viper jumpsuit



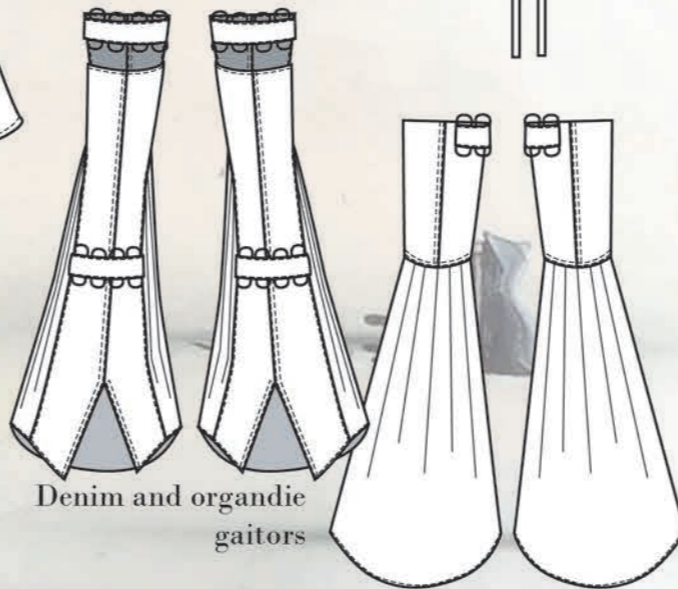
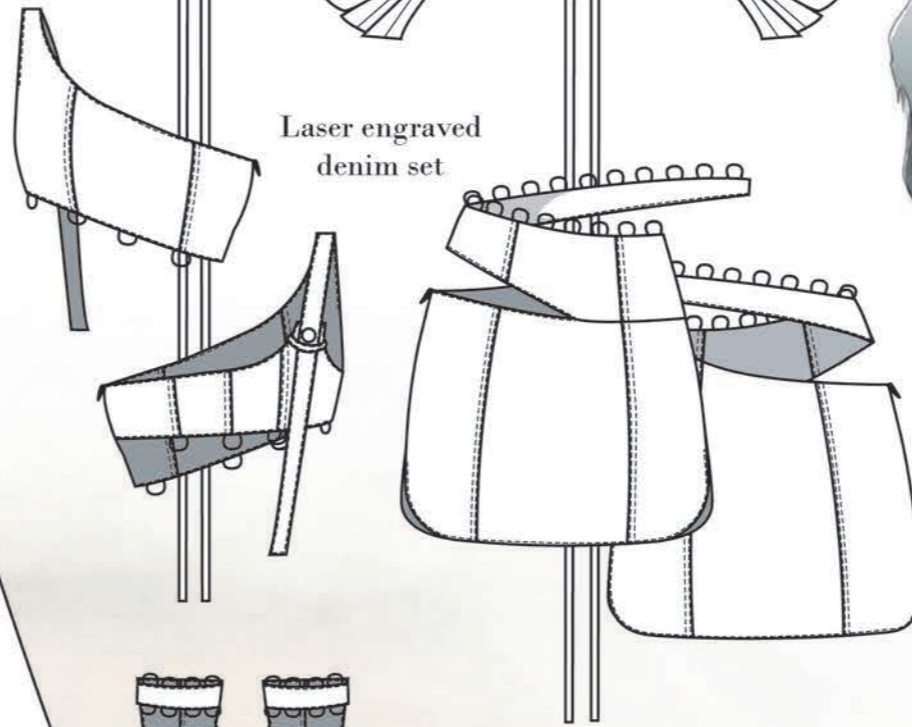
Donated deadstock jersey and polyester mesh are combined to create an entirely new fabric where the top layer is laser cut to reveal the fabric underneath.



Pleated organdie 'bolero'



Laser engraved denim set



Denim and organdie gaiters

Materials include ombre dyed cotton organdie, laser engraved denim, polyester lining and leather cord





Final garments and photoshoot

