

MOTHER OF MANKIND

ଆକାଶଭୂମି

DESIGN PORTFOLIO

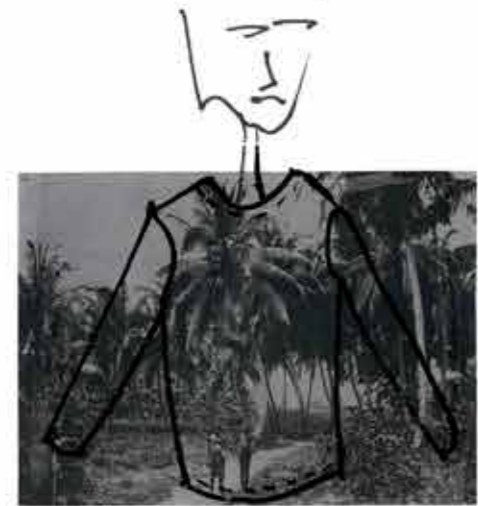
ଫାଣ୍ଟନ୍ ଲେଉଟା

ALBEKULAN translates to 'mother of mankind' – the original name before 'AFRICA'.

This collection pays homage in celebrating the influences and evolution of West Africa in the western world community today.

It's undeniable that there are many elements of each country in West Africa that intertwines the region as one – from the food the traditional clothing, brocken english and music.

The garments in this collection reflect cultural aesthetic combined with how this generation embodies this new age in West African culture.



WITH WEST AFRICAN LOVE



HE/HIM/HIS

GENDER: MAN
AGE: 20 - 40
LOCATION: LIVES IN THE CITY
WORK: IN A CREATIVE FEILD
BEHAVIOUR: CHILLED, BUT OUTGOING
LOOK: BOLD SENSE OF STYLE
HOBBIES: CULTURALLY INVOLVED, MUSIC, FILM,
ATTENDING EVENTS



BIANCA SAUNDERS



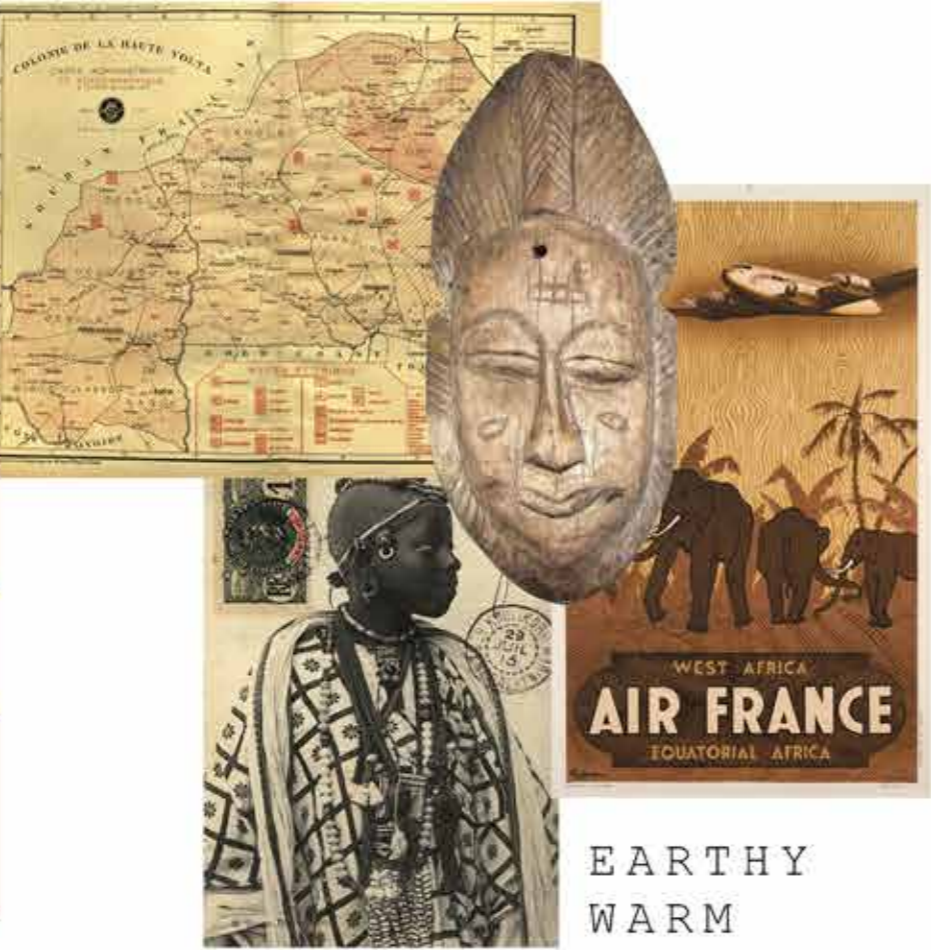
WALES BONNER



DIMISHA'S HOUSE 11/07/21



FABRIC STORY



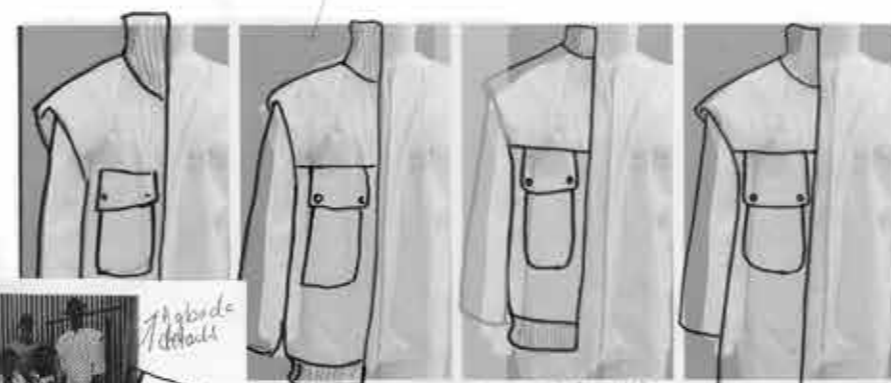
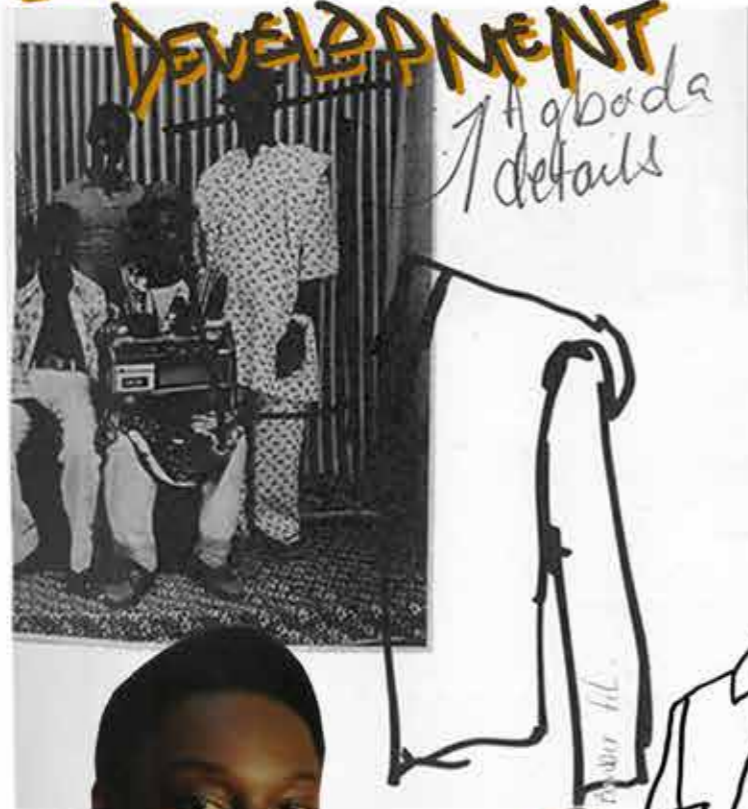
EARTHY
WARM
SAHARAN
WOODEN



MUTED
WASHED
DEEP
OFF
VINTAGE



LEATHER JACKET DEVELOPMENT

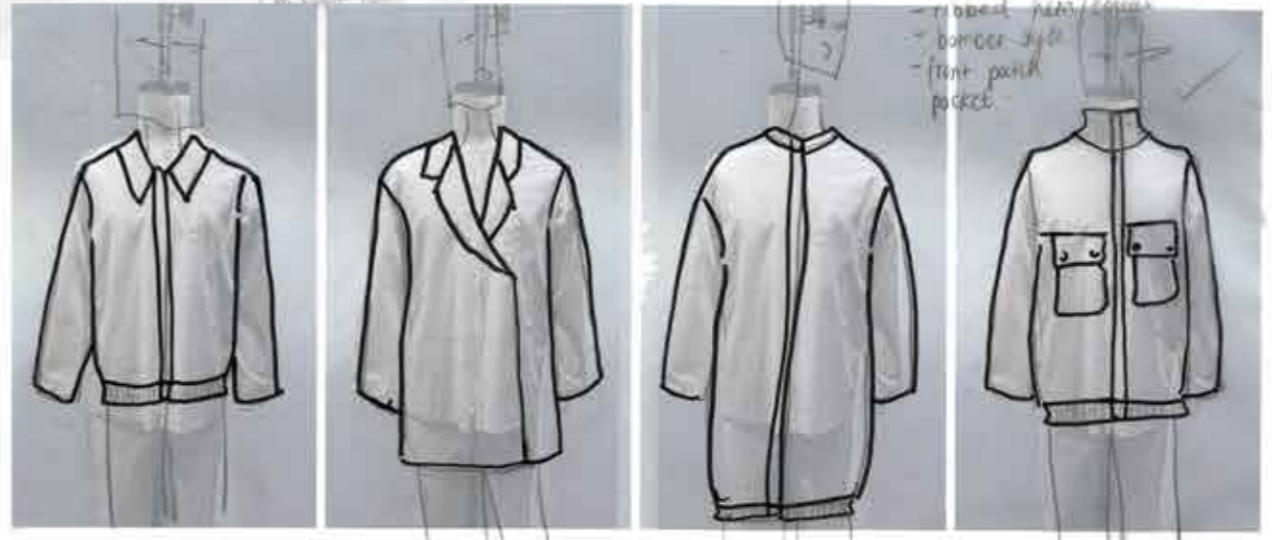


Agbada details

skirt, should
front
under neck line

- lower chest curve
- raised front panel

- long sleeve



- raised front panel
- bomber style
- front panel pocket

- standard collar
- bomber style
- offed hem

- Blazer fit
- asymmetrical front
- oversized/relaxed

- long line
- bomber style
- collarless
- invisible fasteners





SHAPE AND TROUSER DEVELOPMENT

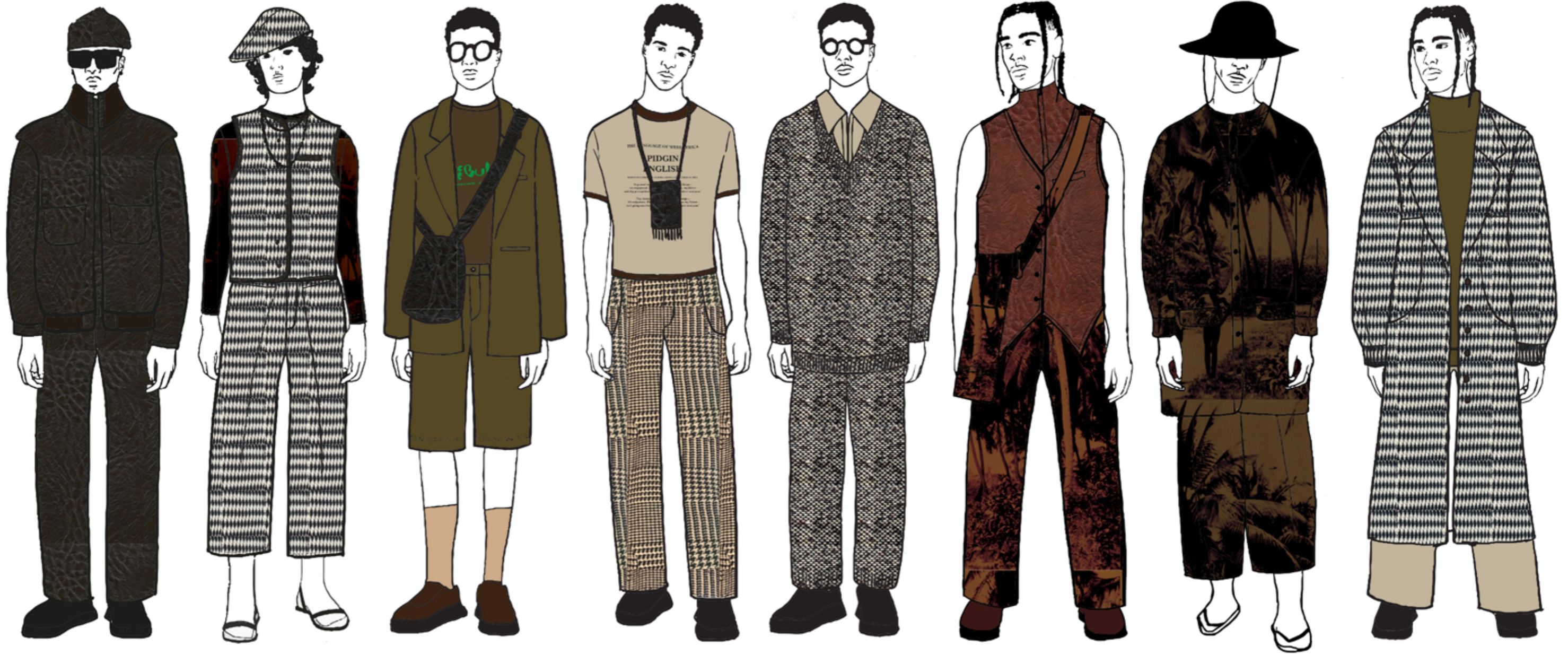




THE PRINT STORY

TAKING VINTAGE WEST AFRICAN PHOTOGRAPHY AND WE REIMAGINING IT FOR SOMETHING MODERN AND WEARABLE





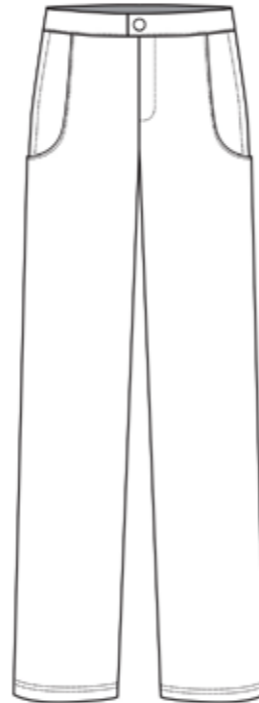
LOOK ONE



OVERSIZED LEATHER BOMBER JACKET
BROWN FAUX LEATHER JACKET
WIDE CHEST POCKETS AND
SIDE POCKETS
CENTRE FRONT ZIPPER FASTENING
STRAP CUFF DETAILING

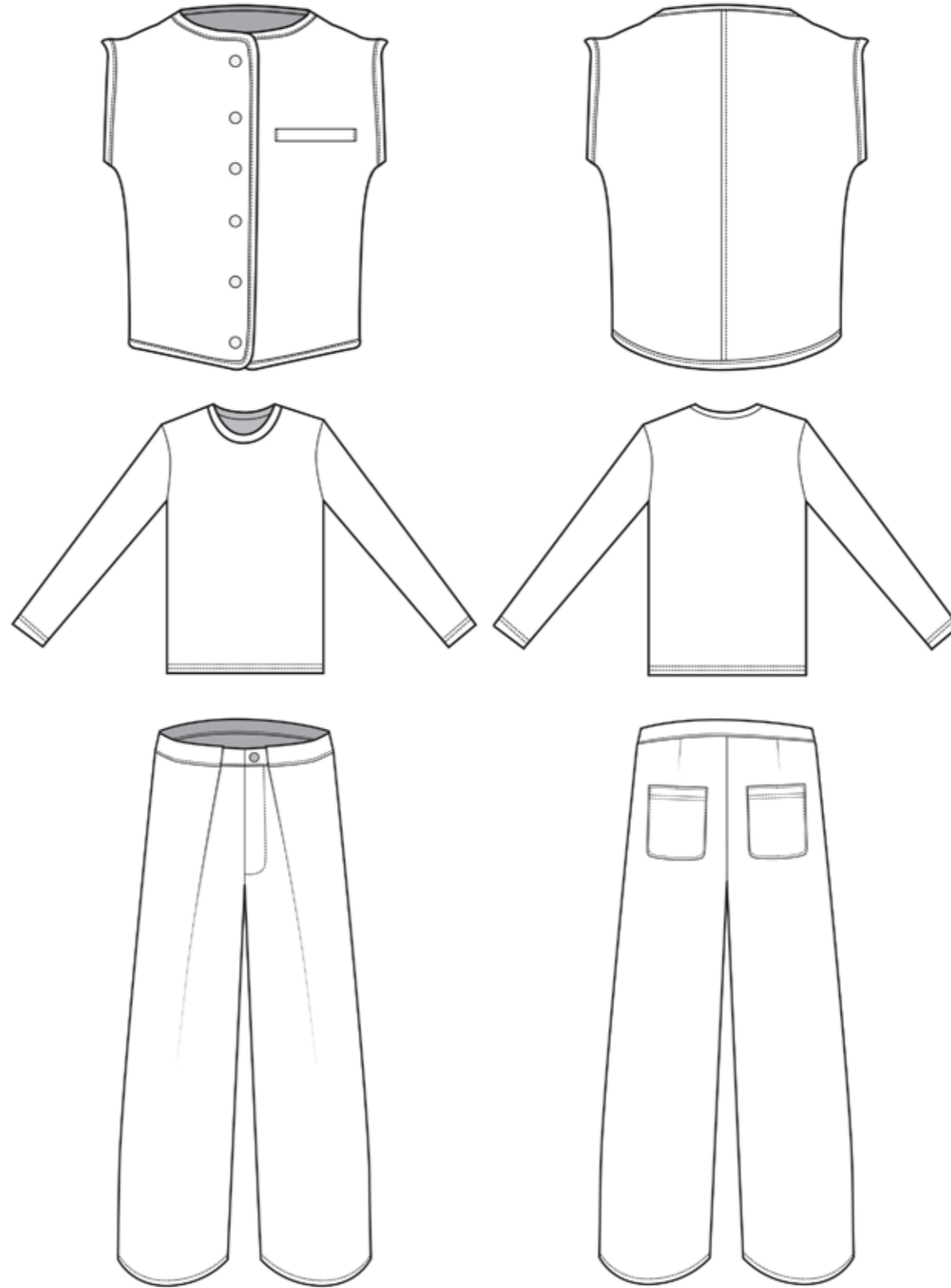
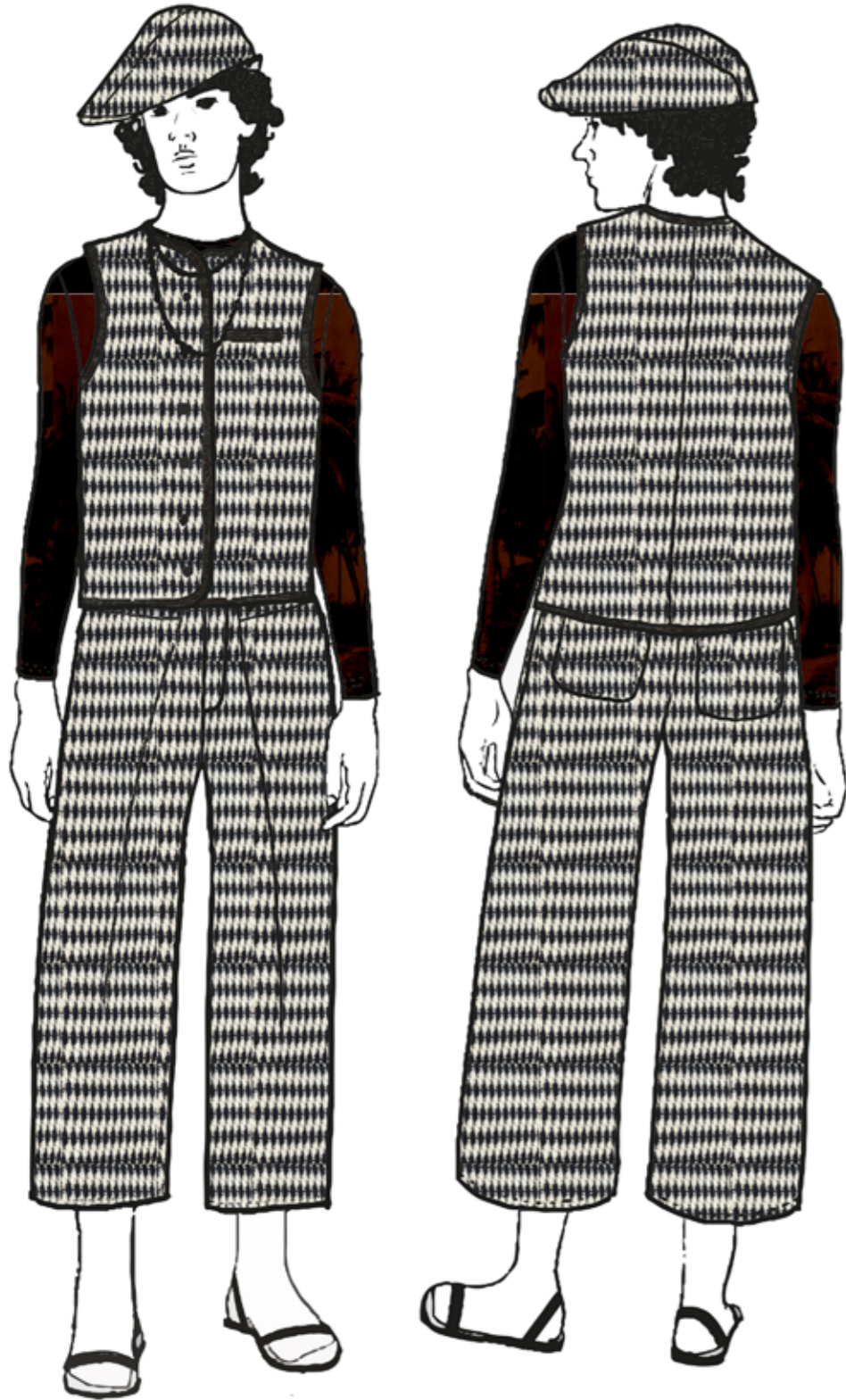


FITTED PRINT T-SHIRT
ALL OVER PRINTED POLYESTER
ELASTNE ARABESQUE



U-SHAPE DEEP POCKET TROUSERS
LONG BROWN FAUX LEATHER
TROUSERS
BACK PATCH POCKETS

LOOK TWO

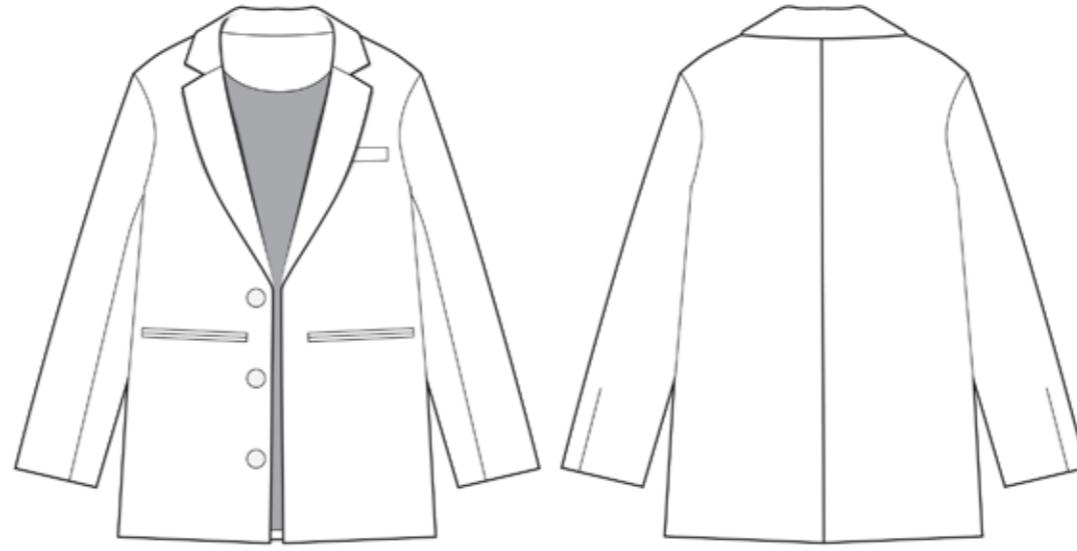
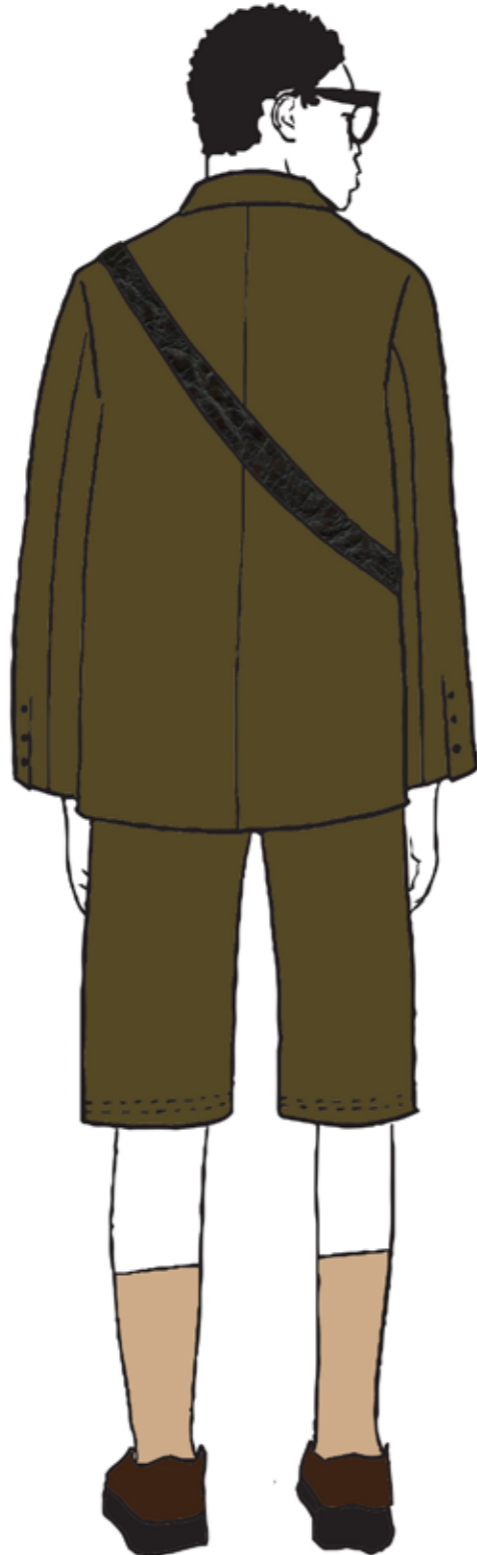


FITTED STANDARD WAISTCOAT
DIAMOND STRIPPED WAISTCOAT
BROWN FAUX LEATHER BIAS-
BINDING
FRONT POPPERS FASTENING

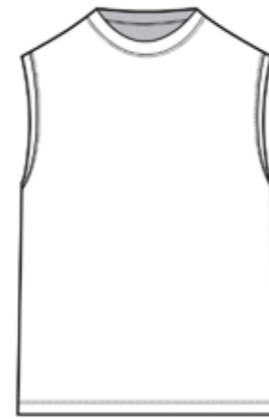
FITTED PRINT T-SHIRT
ALL OVER PRINTED POLYESTER
ELASTNE ARABESQUE

WIDE LEG PLEAT TROUSERS
LONG BROWN FAUX LEATHER
TROUSERS
BACK PATCH POCKETS
WIDE SLEEVE PLEAT

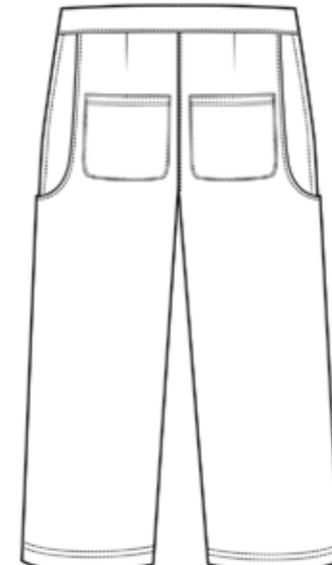
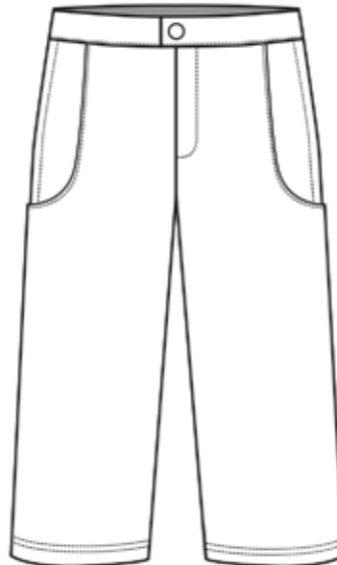
LOOK THREE



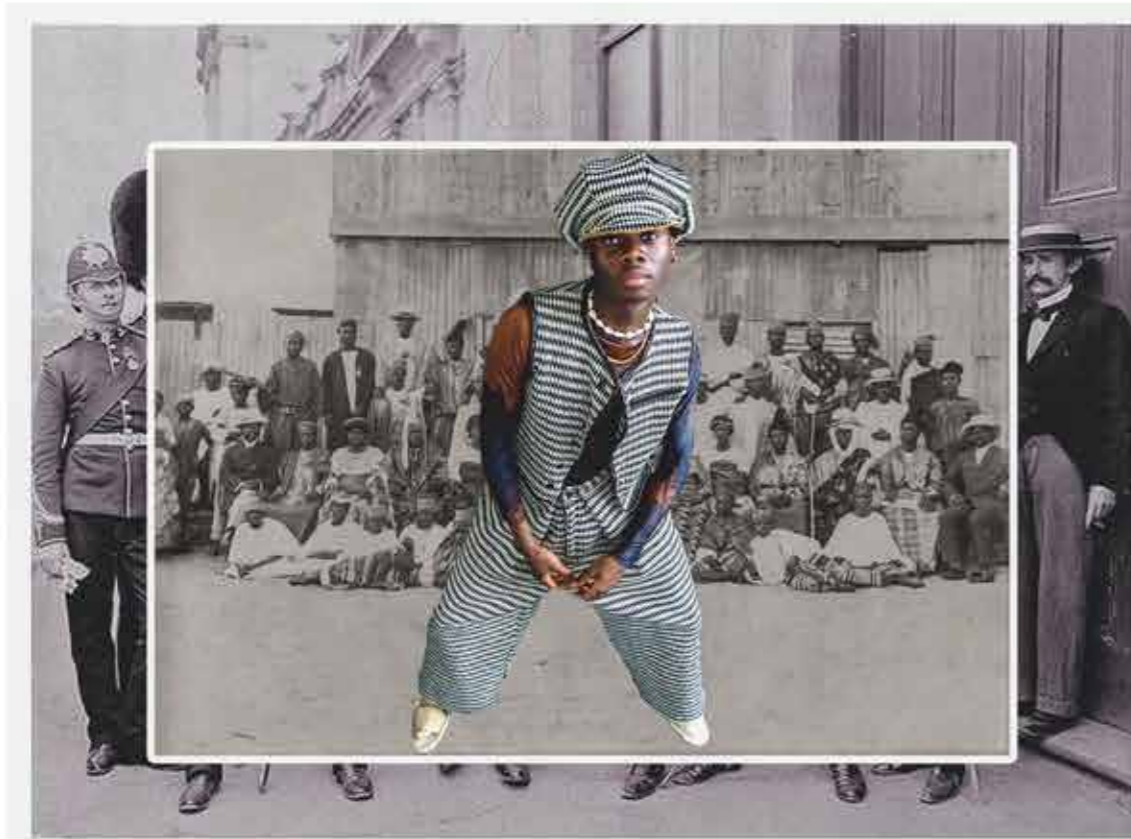
OVERSIZED
BROWN FAUX LEATHER JACKET
WIDE CHEST POCKETS AND
SIDE POCKETS
CENTRE FRONT ZIPPER FASTENING
STRAP CUFF DETAILING



FITTED PRINT T-SHIRT
ALL OVER PRINTED POLYESTER
ELASTNE ARABESQUE



U-SHAPE DEEP POCKET TROUSERS
LONG BROWN FAUX LEATHER
TROUSERS
BACK PATCH POCKETS



CREATIVE DIRECTOR/DESIGNER JANNINE NGESANG
ART DIRECTOR MALAURIE ACCROMBESSI
HAIRSTYLIST LEIA WASIKE
PHOTOGRAPHY MALAURIE ACCROMBESSI
MODELS FRED JONES
DAMI OJOBARO
STUDIO AUCH STUDIOS

