

SAINTS AND SINNERS

A modern take on the Elizabethan Era
[17 Nov 1558 – 24 Mar 1603].

Dramatic style and opulent embellishments whilst accentuating the modern hourglass figure, including references to links in nature of an English garden and incorporating embroidery and intricate Laser Cut Patterning.

Juxtapositioned traditional Elizabethan rigidity volume and princess pleating/smocking with modern ultra feminine Maria Grachvogel inspired: loose/flowing fabric, with watteau style backs.



JEMIMA LAUREN CRANE

17030455

SAINTS AND SINNERS GRADUATE COLLECTION 2022

CONCEPT BOARD



No. efd8d



No. d9d1b0



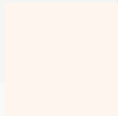
No. 000000



No. c1ac66



No. 424241



No. ff8f3



No. 616160

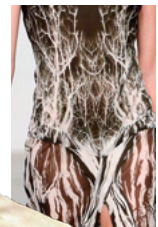
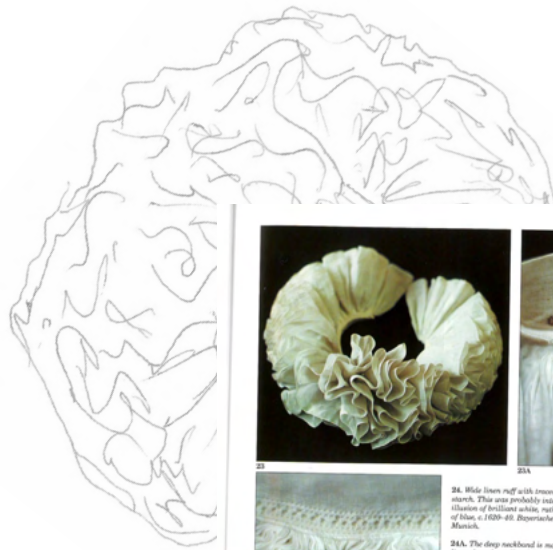
JEMIMA LAUREN CRANE

17030455

SAINTS AND SINNERS GRADUATE COLLECTION 2022

COLOUR BOARD

VOLUME / PLEATING AND LIGHTWEIGHT FABRIC



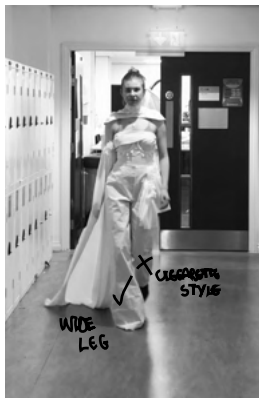
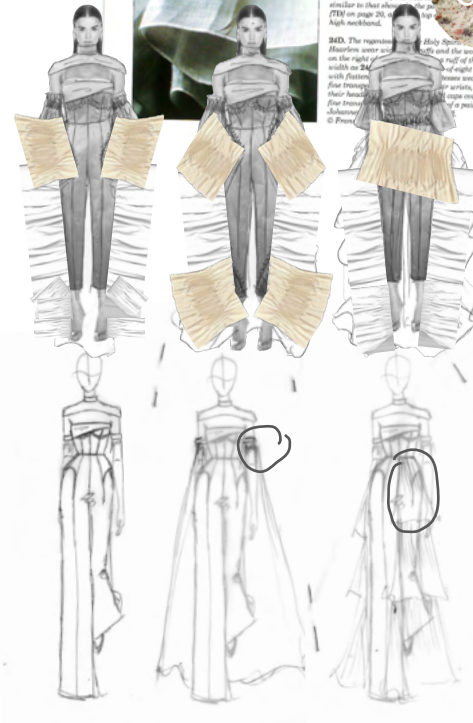
24. Wide linen ruff with traces of the original starch. The area probably intended to provide a brilliant white, rather than of blue, a 1639-40. *Reperforata Nativitas*, Munich.

24A. The deep neckband is made of a fabric finer than the ruff and the band is... Originally the ruff would probably... with a very high double or even a... over 100" yards of linen in the ruff... approximately 100 ruy planes at...

24B. The outer edge of the ruff is... 10" wide.

24C. The strip of raised white... pattern may originally... around the neck of the woman... similar to that shown... for... 700 on page 201... High neckband.

24D. The ruff... and the... on the right of the... with an... with... five... five... five... five... of a piece.



FITTINGS / FINAL DESIGN CRIT

Wattleau back, noun, a section at the back of a woman's dress that is caught in pleats or gathers at the neck and falls unbelted to the floor.



OUTFIT 1

OUTFIT 2+3

JEMIMA LAUREN CRANE
17030455
SAINTS AND SINNERS GRADUATE COLLECTION 2022

LASER CUT PROCESS AND EMBELLISHMENT



ELIZABETHAN SLASHING MOVEMENT

LASER CUT LACE DESIGN

SAMPLE in tulle

LACE sketch from Elizabethan Janet Arnold book.

JEMIMA LAUREN CRANE

17030455

SAINTS AND SINNERS GRADUATE COLLECTION 2022

DESIGN DEVELOPMENT 3 BOARD



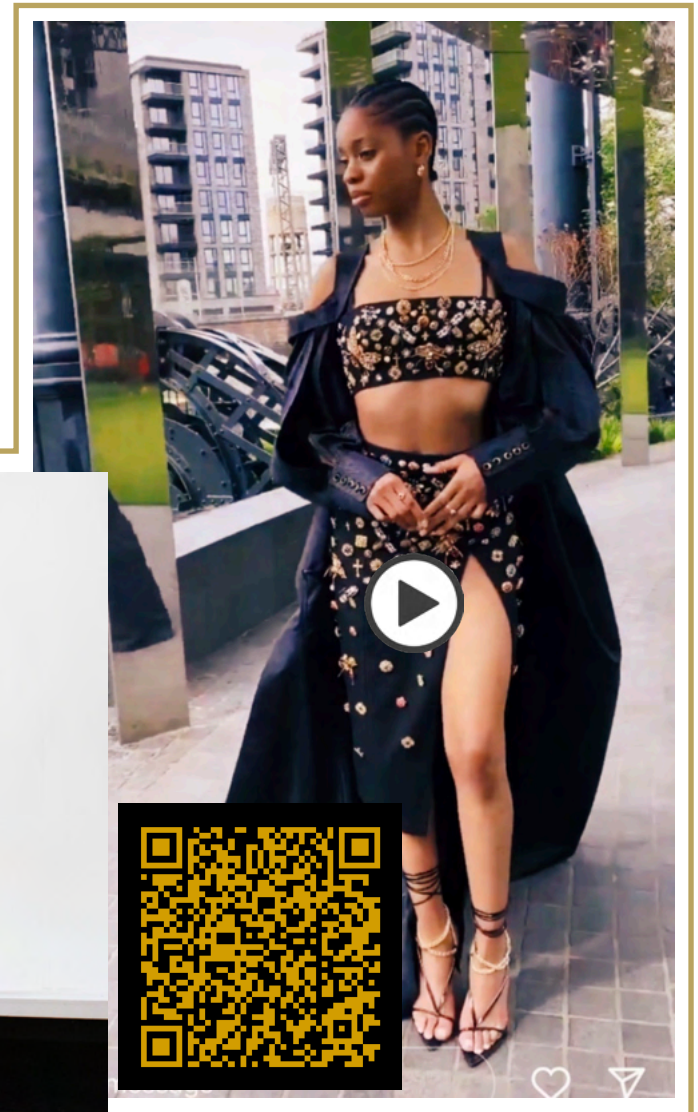
JEMIMA LAUREN CRANE
17030455
SAINTS AND SINNERS GRADUATE COLLECTION 2022

FABRICATION AND TRIM BOARD



JEMIMA LAUREN CRANE
17030455
SAINTS AND SINNERS GRADUATE COLLECTION 2022

FINAL LINE UP



SCAN ME!

JEMIMA LAUREN CRANE

TITLE: SAINTS AND SINNERS GRADUATE COLLECTION 2022
SPECIFICATION PACK



STYLE No. JC002

DESIGNER:	JEMIMA CRANE
PRODUCT DESCRIPTION:	WOOL JUMPSUIT WITH CREPE
STYLE NO.:	JC002
COLOUR/HEX CODE:	CREAM / F8F7F0
SEASON:	A/W 23
SAMPLE SIZE:	UK 12
SIZE RANGE:	UK 6-16 (+PETITE)
DATE:	10/04/2022

FINAL MAJOR PROJECT
TECHNICAL PORTFOLIO BY JEMIMA CRANE
16 FDT [17030435]

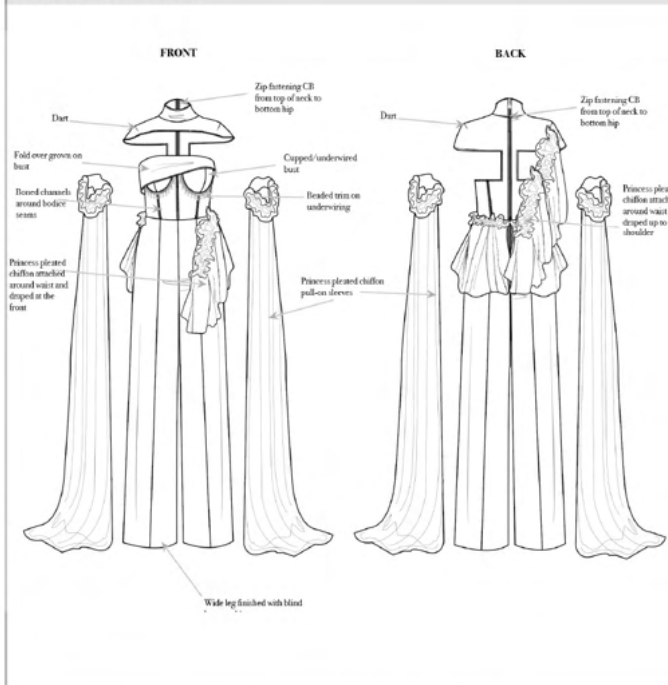
JEMIMA LAUREN CRANE

DESIGNER:	JEMIMA CRANE	SEASON:	A/W 23
PRODUCT DESCRIPTION:	WOOL JUMPSUIT WITH CREPE	SAMPLE SIZE:	UK 12
STYLE NO.:	JC002	SIZE RANGE:	UK 6-16 (+PETITE RANGE)
COLOUR/HEX CODE:	CREAM / F8F7F0	DATE:	10/04/2022

DESIGN ROOM SPECIFICATION

Floor length wide-legged jumpsuit - with boned and capped bodice.
Neckline is attached to the garment at the back.
Cliffon princess pleats (asymmetric), draped front to back around waist and continuing up to the shoulder.
Centre back zip fastening from top of back to bottom of hip.
Centre back zip fastening from top of back to bottom of hip.
This look also includes pull on princess pleated cliffon sleeves.

FRONT AND BACK VIEW ANNOTATED CAD:



JEMIMA LAUREN CRANE

DESIGNER:	JEMIMA CRANE	SEASON:	A/W 23
PRODUCT DESCRIPTION:	WOOL JUMPSUIT WITH CREPE	SAMPLE SIZE:	UK 12
STYLE NO.:	JC002	SIZE RANGE:	UK 6-16 (+PETITE RANGE)
COLOUR/HEX CODE:	CREAM / F8F7F0	DATE:	10/04/2022

FABRICATION ANALYSIS

MAIN FABRIC USED:



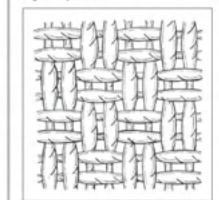
Fabric type: 60% VESCOSE / 40% WOOL BLEND
Fibre Composition: NATURAL + MANUFACTURED
Weight: HEAVY
Colour: CREAM

Common Characteristics:

My main fabric is made up of a 'hopsack weave' based around a variation of the plain weave 'where, rather than one thread, two or more threads are used as one unit. If your threading plan is a regular threading on shafts 1, 3, 3, and 4 in sequence, then you can lift shafts 1 and 4 together, and insert two weft picks. This is followed by lifting shafts 3 and 4, and inserting a further 2 weft picks' (Shenton, 2014).

This weave much like the plain weave has been proven to be very durable and suitable for garment meant for their longevity - a quality that is very important when considering a garment's environmental impact.

Diagram of hopsack weave



Irregular hopsack on 2 shafts

Threading	1	2	3	4	Lifting plan	X
1						X
2	X	X	X	X		X
3						X
4	X	X	X	X		X

Shenton (2014)

REFERENCES:

Shenton, J 2014, Woven Textile Design, Laurence King Publishing, London. Available from: ProQuest Ebook Central. [04 May 2022].

TESTS PERFORMED:

COLOUR FASTNESS TO RUBBING - To test colour transfer.
REFERENCE: BS EN ISO 105
For both Warp and Weft swatches the polyester/wool blend withstood with a grade rating of 5. This compared with the industry standard of grade 4-5 is excellent. Thus, wearing this garment will not fade in colour after use, this is especially important on areas such as the bottom and undersides.

COLOUR FASTNESS TO WASHING - To test colour transfer.
REFERENCE: BS EN ISO 105, BS EN ISO 105 ESO 105
For both Warp and Weft swatches the polyester/wool blend received a grade rating of 5 with fibre transfer. This compared with the industry standard of 4-5 is ideal. Thus, wearing this garment will leak a limited amount of colour when washed adding to it's durability. However, to have a less intense effect it is advised this is a dry clean only garment which in turn will increase the product lifecycle.

MARTINDALE ABRASION - To test wear durability.
REFERENCE: BS EN ISO 12947-1
For both Warp and Weft swatches the polyester/wool blend was described as having a 'complete breakdown' with 38-128 rubs which is not ideal for this garment, however due to it being an evening wear piece this is not as important as if it were a pair of jeans etc.

COLOUR FASTNESS TO PERSPHATION - To test colour transfer.
Reference: BS EN ISO 105, BS EN ISO 105 ISO 105
[EXTRA: RECOMMENDED TO CARRY OUT] If garment is designed to be worn many times as eveningwear it is crucial that this test is done to decide of polyester/wool blend is an appropriate fabric. If deemed not appropriate - it would mean that the under-arms of the bodice would appear visibly faded and grey in colour.

RECOMMENDED CARE:

- Dry Clean Only
- Iron on Low Heat [Iron on the Reverse Only]
- Do Not Bleach
- Dry Flat

ENVIRONMENTALLY FRIENDLY ALTERNATIVE:

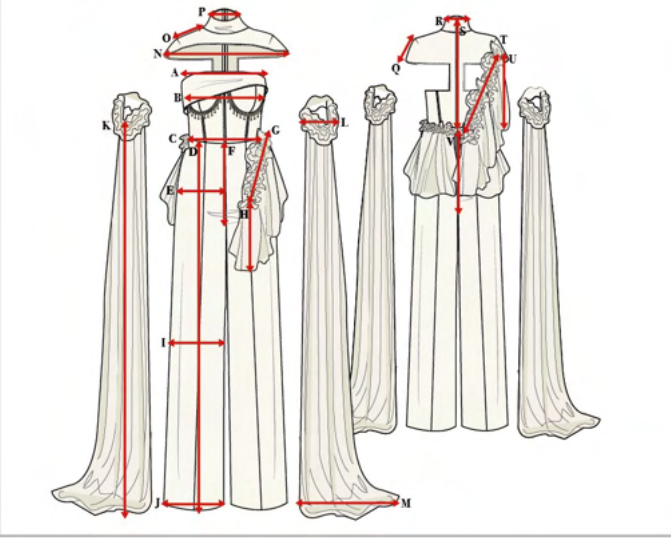
- Hand Wash
 - Benefits:
 1. more effective
 2. less costly
 3. more environmentally friendly
- [ALL TO PROLONG PRODUCT LIFECYCLE AND IMPROVE LONGEVITY]

JEMIMA LAUREN CRANE

DESIGNER:	JEMIMA CRANE	SEASON:	A/W 22
PRODUCT DESCRIPTION:	WOOL JUMPSUIT WITH CREPE	SAMPLE SIZE:	UK 12
STYLE NO.:	JC062	SIZE RANGE:	UK 6-16 (+ PETITE RANGE)
COLOUR/HEX CODE:	CREAM / F8F7F0	DATE:	10/04/2022

SIZE CHART AND GRADING RANGE

MEASUREMENT POINTS:



HOW TO MEASURE :

- A - FOLD OVER BUST
- B - BUST
- C - WAIST
- D - WAIST TO HEM
- E - HIP
- F - WAIST TO FRONT CROTCH
- G - FRONT PLEAT LENGTH
- H - FRONT PLEAT WIDTH
- I - KNEE
- J - HEM WIDTH
- K - SLEEVE LENGTH
- L - SLEEVE ARM CUFF
- M - SLEEVE HEM
- N - SHOULDER TO SHOULDER
- O - SHOULDER SEAM
- P - FRONT NECK
- Q - SHOULDER DROP
- R - BACK NECK
- S - BACK NECK TO WAIST
- T - BACK PLEAT WIDTH
- U - BACK PLEAT LENGTH
- V - BACK WAIST TO CROTCH

JEMIMA LAUREN CRANE

DESIGNER:	JEMIMA CRANE	SEASON:	A/W 22
PRODUCT DESCRIPTION:	WOOL JUMPSUIT WITH CREPE	SAMPLE SIZE:	UK 12
STYLE NO.:	JC062	SIZE RANGE:	UK 6-16 (+ PETITE RANGE)
COLOUR/HEX CODE:	CREAM / F8F7F0	DATE:	10/04/2022

SIZE CHART AND GRADING RANGE [CONTINUED]

GRADING RANGE:

SIZE CHART (BODY MEASUREMENTS) - Measurements taken 2002/03 from A/W 1908	8	10	12	14	16	GRADING
1. Bust	165.5	166.5	167.5	168.5	169.5	1
2. Neck Level to Crotch	146.3	147.2	148.3	149.2	150.2	1
3. Depth of Sleeve to Crotch	130.8	130.8	131.2	131.8	132.5	1
4. Side Waist to Ground (Front)	136.13	136.63	137.13	137.63	138.13	0.5
6. Inside Leg from Ground	77.9	78.4	78.9	79.4	79.9	0.5
8. Sleeve Width	31.9	31.4	31.9	31.4	31.7	0.2
10. Shoulder Drop	4.5	4.5	4.6	4.6	4.6	0.5
12. Neck to Back Waist Level	61.5	61	61.5	62	62.5	0.5
13. Waist Circ.	65.36	66.36	67.36	68.36	69.36	1
14. Hip Circ.	89	91	93	95	97	2
16. Centre Back Waist to Hip*	20.1	20.4	21.1	21.4	22.1	0.5
18. Under Arm Circ.	79.25	81.25	83.25	85.25	87.25	2
20. Armpit to End of Shoulder	18.8	19.1	19.4	19.7	20	0.3
22. Neck Base Circumference	32.28	33.28	34.28	35.28	36.28	1
30. Fullback Circumference	29.6	30.6	31.6	32.6	33.6	1
34. Cross Back Shoulders	36.13	37.13	38.13	39.13	40.13	1
36. Across Back (to Armhole between neck and armpit)	33.3	34.3	35.3	36.3	37.3	1
38. Across Front Shoulders	36.2	36.2	37.2	38.2	39.2	1
38. Across Front (between between centres)	30.4	31.4	32.4	33.4	34.4	1
40. Front Shoulder Length	13.8	14.1	14.4	14.7	15	0.3
42. Back Neck Level to Waist	19.9	20.4	20.9	21.4	21.9	0.5
44. Side Waist to Knee*	98.2	98.7	99.2	99.7	101.2	0.5
46. Side Waist to Ankle*	99.3	99.8	100.3	100.8	101.3	0.5
48. Front Crotch	86.5	86.5	86.5	86.5	86.5	0
50. Back Crotch	89.4	89.4	89.4	89.4	89.4	0
52. Neck to Bust Level	31	31.5	32	32.5	33	0.5
52. Under Bust Crotch (circum)	66.75	72.75	78.75	84.75	90.75	6
60. Width of Bust Circumference	11.2	11.6	12	12.4	12.8	0.4
62. Upper Arm Circ.	33	35	37	39	41	2
62. Crotch Length	47.5	48.3	49.1	49.9	50.7	0.8
64. Thigh Circ.	54.62	55.62	56.62	57.62	58.62	1
64. Calf Circ.	32.83	33.33	33.83	34.33	34.83	0.5

PETITE GRADING RANGE:

SIZE CHART (BODY MEASUREMENTS) - Measurements taken 2002/03 from A/W 1908	8	10	12	14	16	GRADING
1. Bust	165.5	166.5	167.5	168.5	169.5	1
2. Neck Level to Crotch	146.3	147.2	148.3	149.2	150.2	1
3. Depth of Sleeve to Crotch	130.8	130.8	131.2	131.8	132.5	1
4. Side Waist to Ground (Front)	136.13	136.63	137.13	137.63	138.13	0.5



SIZE CHART:

SIZE	BUST	WAIST	HIPS
6	78 cm	58 cm	86 cm
8	82 cm	62 cm	90 cm
10	86 cm	66 cm	94 cm
12	90 cm	70 cm	97 cm
14	94 cm	74 cm	101 cm
16	98 cm	78 cm	105 cm

JEMIMA LAUREN CRANE

DESIGNER:	JEMIMA CRANE	SEASON:	A/W 22
PRODUCT DESCRIPTION:	WOOL JUMPSUIT WITH CREPE	SAMPLE SIZE:	UK 12
STYLE NO.:	JC062	SIZE RANGE:	UK 6-16 (+ PETITE RANGE)
COLOUR/HEX CODE:	CREAM / F8F7F0	DATE:	10/04/2022

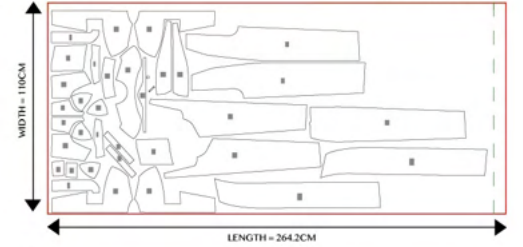
LAY PLAN / MARKER *

POLYESTER WOOL BLEND / MAIN FABRIC:

Utilisation: 52.89%
Waste: 47.11%

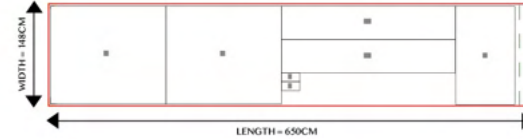
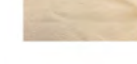


*This waste is not ideal if creating one garment only - however, would have good utilization when adding a second to fill the empty space between pieces.



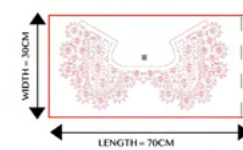
POLYESTER CREPE:

Utilisation: 81.25%
Waste: 18.75%



POLYESTER CREPE / LASER CUT LAYOUT:

Utilisation: 57.81%
Waste: 42.19%



LETTER KEY:

A	B	C	D	E	F	G	H	I	J	K	L	M	N	O	P	Q	R	S	T	U	V
---	---	---	---	---	---	---	---	---	---	---	---	---	---	---	---	---	---	---	---	---	---

FASHION SUSTAINABILITY AND CIRCULAR ECONOMIES/FIT ANF FUNCTION:

1. How might we change our behaviours to be more pro-environmental?
2. Problem solve sustainability related issues and explore creative solutions to current industry challenges.

CONCEPT:

Inspired from my placement at Maria Grachvogel's Mayfair Atelier, I learnt about her design ethos. Maria encourages her clients to 'mindfully invest in pieces that empower and inspire' (Grachvogel, 2021: 37mins 0). Focussing her efforts on slow fashion. An example would be the clever versatility of her clothes, shown below. This jumpsuit is a transformable garment, designed for multiple ways to wear; to create either dressed up or dressed down looks, therefore fashioning a more capsule slim wardrobe and reducing consumption.



This collection will combine the versatility of Maria Grachvogel garments, as well as the beautiful billowing silhouettes traditional to 1950's Balenciaga Couture, each piece in this brief will be able to be transformed in a multitude of ways to achieve different looks and therefore allowing the consumer to get the most out of their pieces with changable styles.



CLAY



MARBLE



TRUFFLE



BENTLEY

JEMIMA CRANE
17030455

'THE METAMORPHOSIS DRESS'



JEMIMA CRANE
17030455
'THE METAMORPHOSIS DRESS'

COLOUR AND FABRICATION



BLACK THICK ELASTIC

BLACK SATIN LINING

BLACK COTTON COUTIL

BLACK COTTON TWILL

BLACK CREPE SATIN

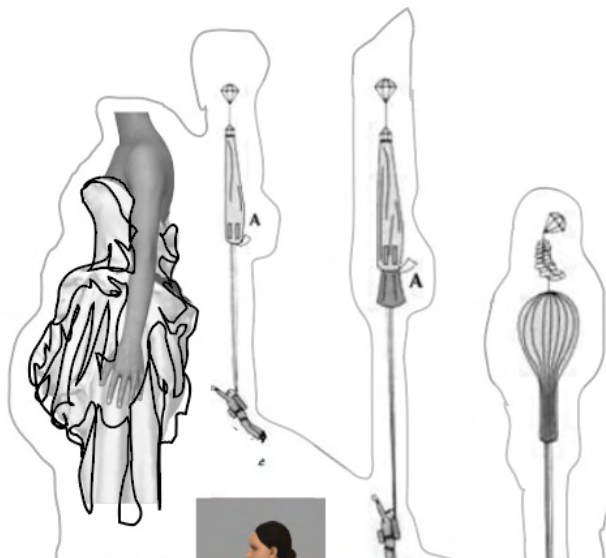
BLACK VELVET RIBBON

BLACK/GUNMETAL POPPERS

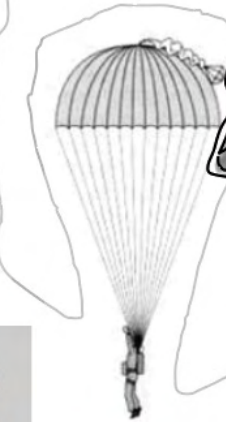
BLACK COTTON TWILL COVERED BUTTONS

JEMIMA CRANE
17030455
'THE METAMORPHOSIS DRESS'

COLOUR AND FABRICATION 2

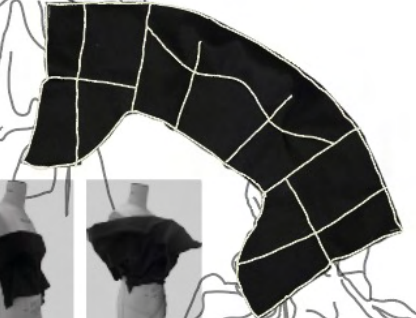


TRANSFORMABLE



TRANSITIONAL

ADAPTABLE



CHANGABLE

MULTIFUNCTIONAL



▶ SCAN ME

JEMIMA CRANE
17030455
'THE METAMORPHOSIS DRESS'

DESIGN DEVELOPMENT 2

INITIAL 4 WAYS TO WEAR



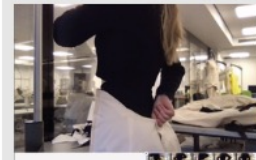
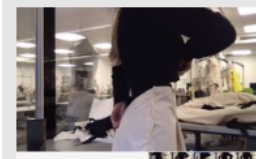
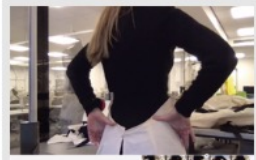
THE METAMORPHOSIS PROCESS



FITTING DAY



BUMSTER SKIRT TOILE



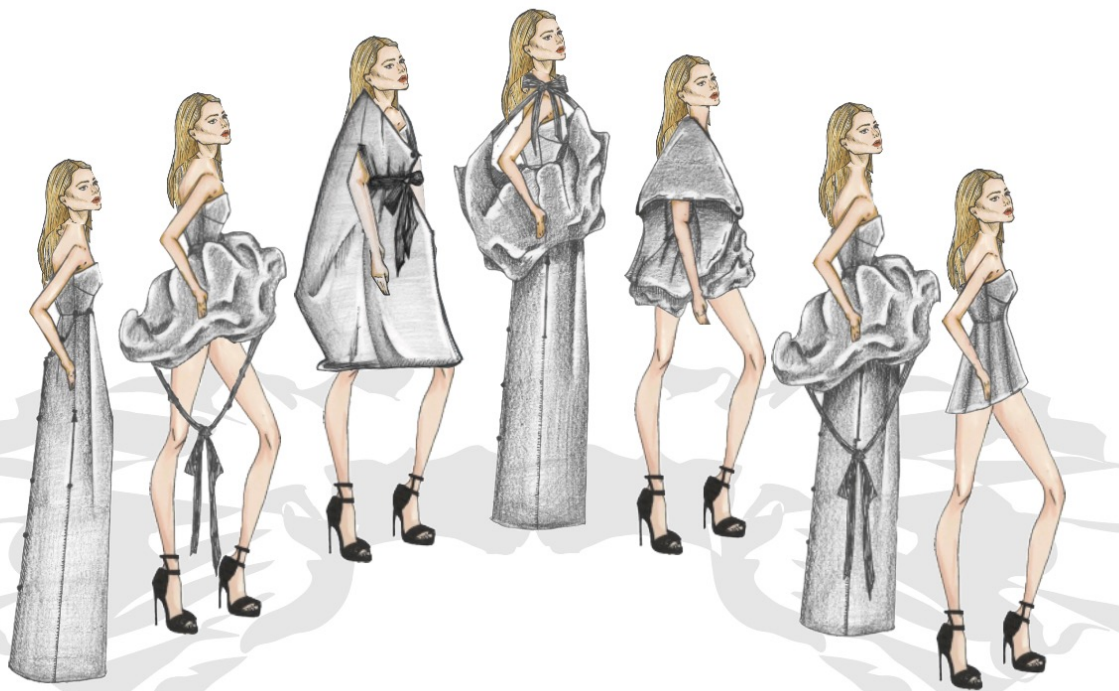
FINAL 7 WAYS TO WEAR



CAPE ARM SLIT PLACEMENT

JEMIMA CRANE
17030455
'THE METAMORPHOSIS DRESS'

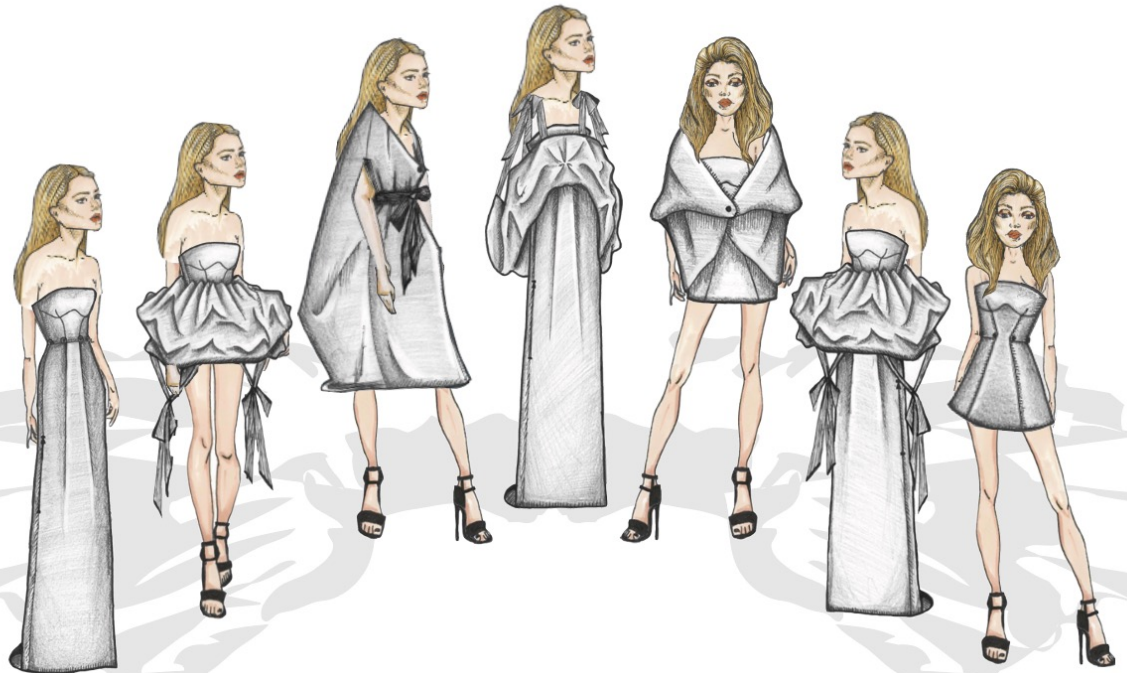
DESIGN DEVELOPMENT 3



DESIGNER:	JEMIMA CRANE	SEASON:	A/W 22	DATE:	20/12/21
PRODUCT DESCRIPTION:	THE METAMORPHOSIS DRESS	SAMPLE SIZE:	12		
RANGE AND STYLE NO:	WOMENSWEAR / 05	FACTORY:	MANCHESTER METROPOLITAN		

CONSTRUCTION DETAIL PART 2

7 WAYS TO WEAR FUNCTION



JEMIMA CRANE
17030455
"THE METAMORPHOSIS DRESS"

FINAL LINE UP

THE METAMORPHOSIS DRESS