

TREASURES OF ATLANTIS





IRIS VAN HERPEN SS21

SCHIAPARELLI SS22

My design ethos is to uplift queer people and therefore this project is genderless. However I have chosen to design for masculing presenting bodies as I feel these body types are under catered for in luxury statement pieces The garments will be statement pieces designed specifically for events and shows and therefore are design for a customer with a luxurious lifestyle unconcerned with cost.

CUSTOMER

MARKET LEVEL

- couture finishing
- creating wearable art
- bespoke pieces tailor made



COLOUR AND FABRIC

**BLACK 3D PRINT
ON SAND MOHAIR 100% WOOL**

KID MOHAIR MADE IN ENGLAND



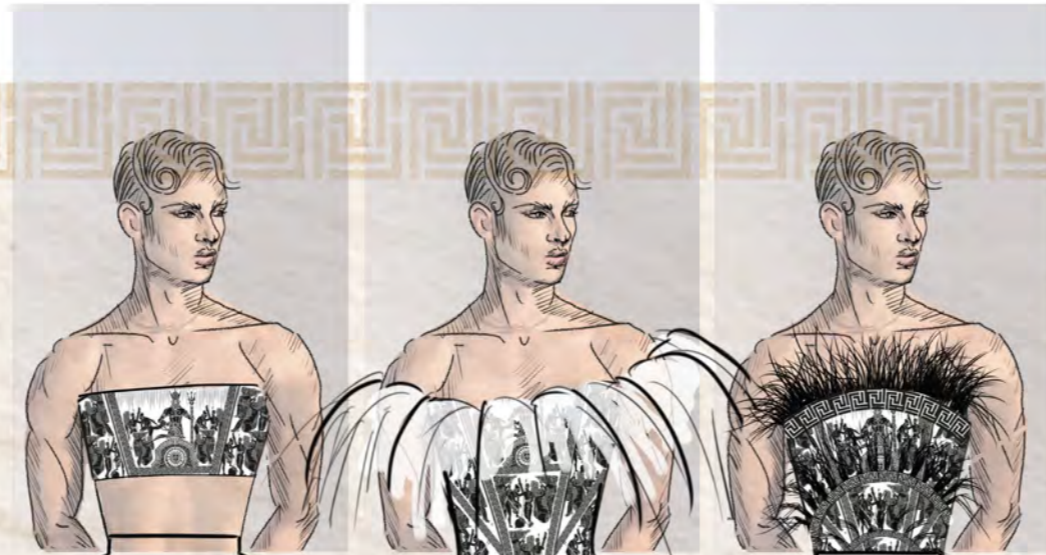
**FUSCHIA
COTTON SPANDEX**



BLACK OSTRITCH FEATHER

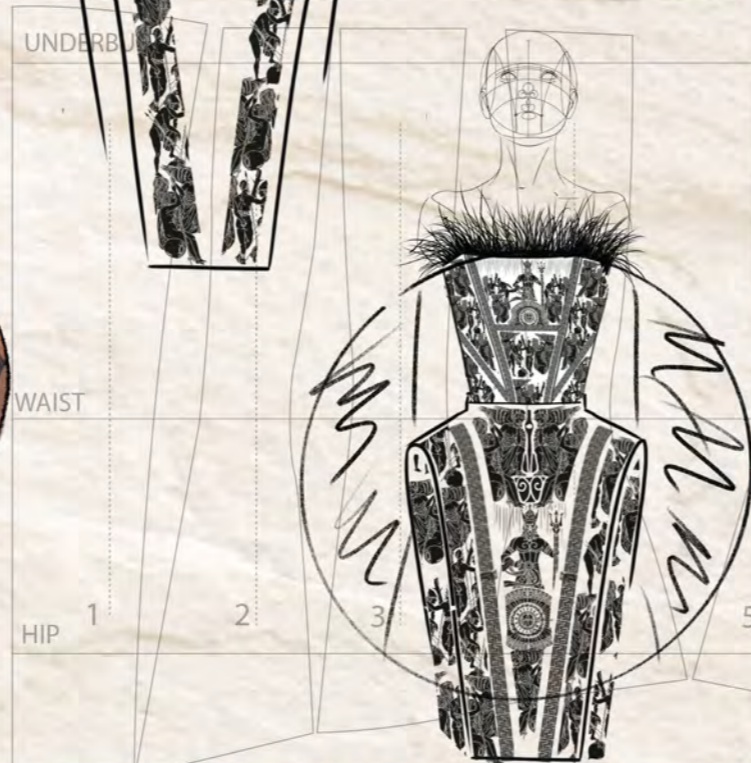


HOT PINK OSTRITCH FEATHER



The top is corseted to give a feminine silhouette with angular structured hips reminiscent of greek vases.

th shaped sleeves create a full circle, recurring theme throughout the collection.



One of the main advantages of this 3Dprinting technique is being able to create any artwork and not be limited by bead shapes. Taking full advantage of this I wanted to emulate the visual story telling that appears on ancient greek vases.

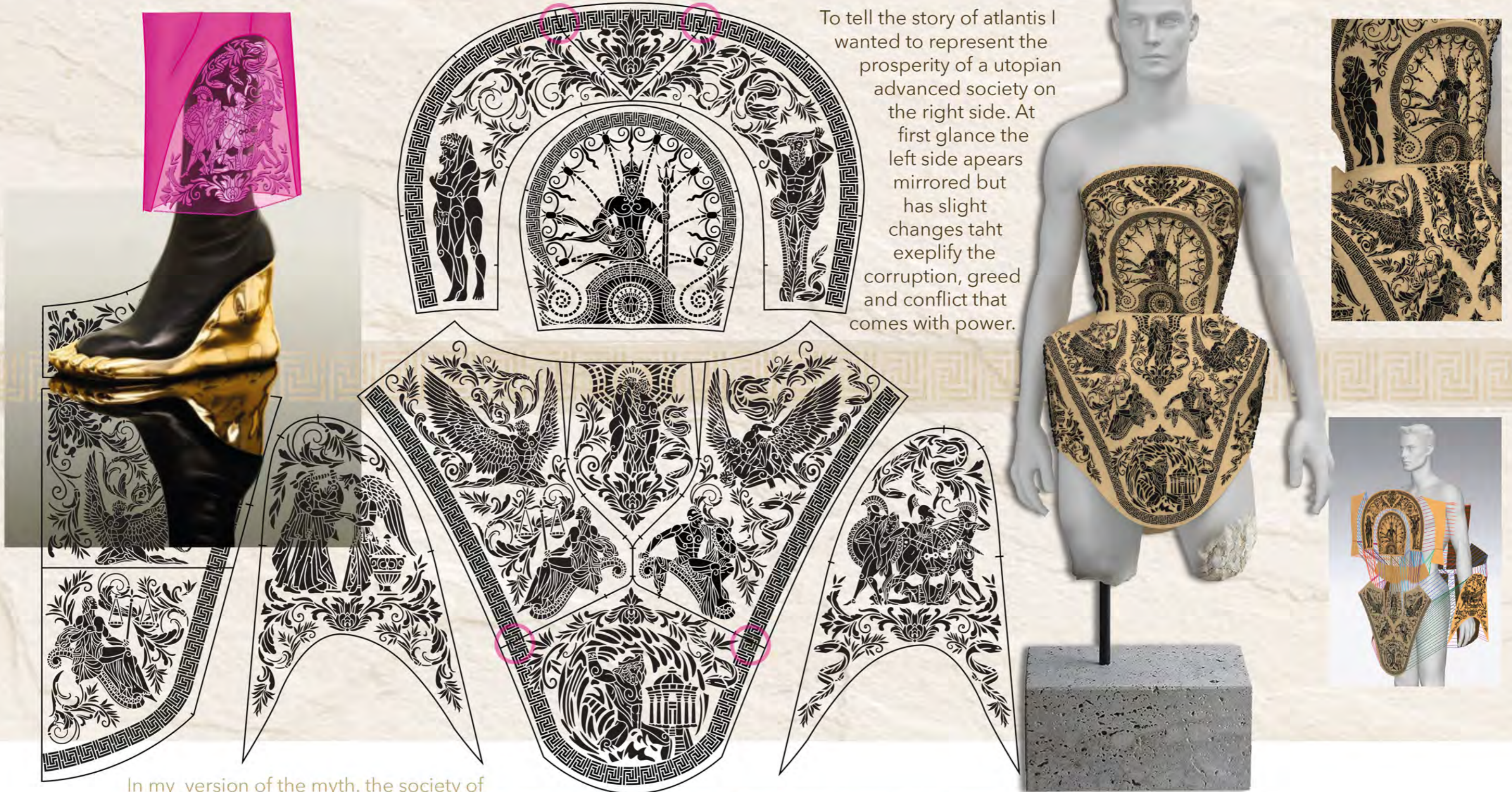


VASE OF ATLANTIS DEVELOPMENT

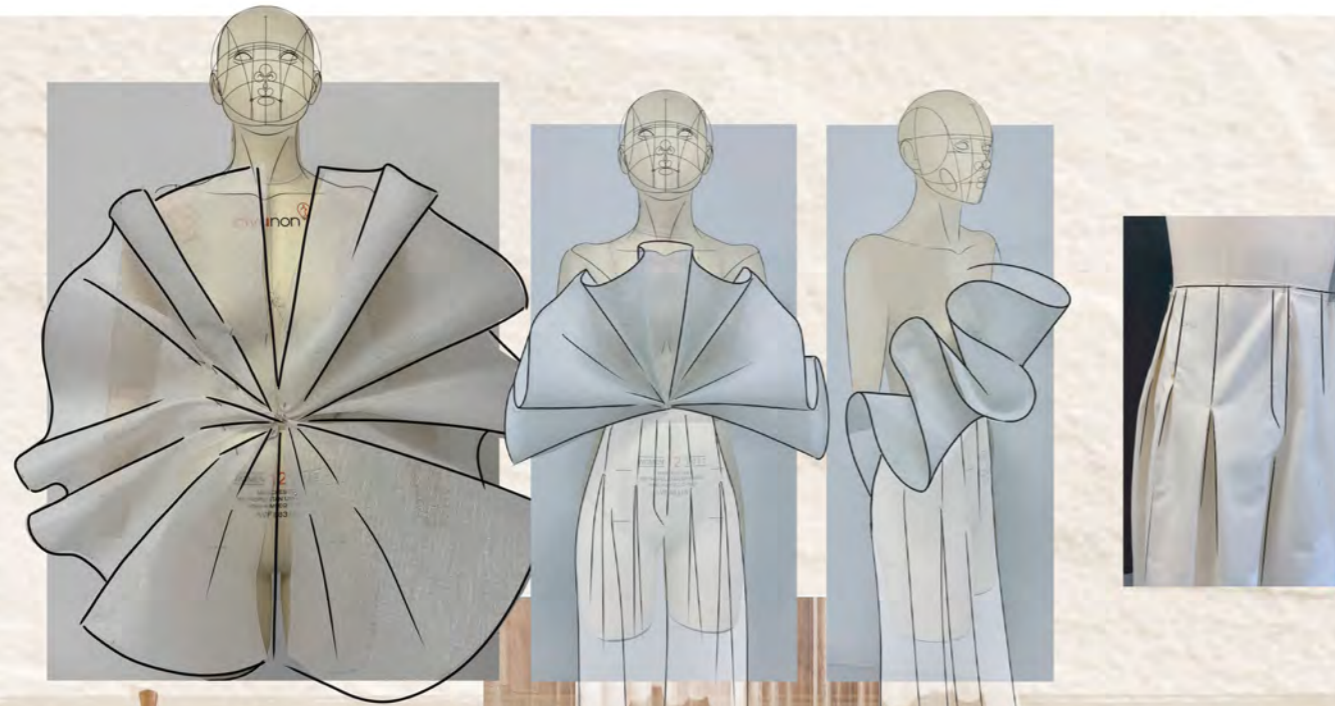
The centre shows Poseidon as the proud God of atlantis at the top, transitioning to him sinking the city in rage at the bottom .

ARTWORK: VISUAL STORY

To tell the story of atlantis I wanted to represent the prosperity of a utopian advanced society on the right side. At first glance the left side appears mirrored but has slight changes taht exeplify the corruption, greed and conflict that comes with power.



In my version of the myth. the society of Atlantis was queer. The artwork shows this, with imagery of trans people and male lovers.

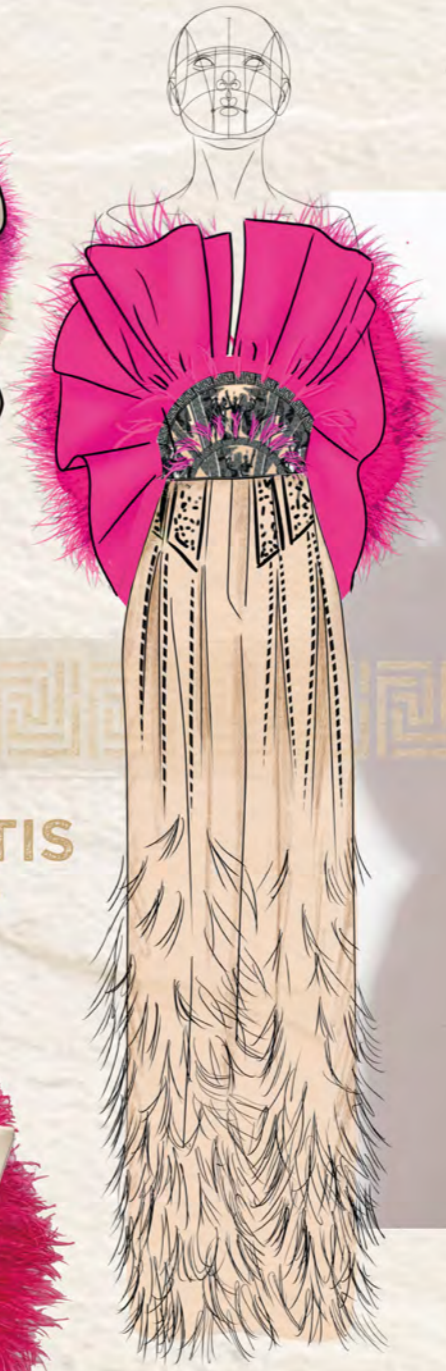


As the middle look this outfit shows the transition of the collection where the story slowly gets reclaimed by the sea.

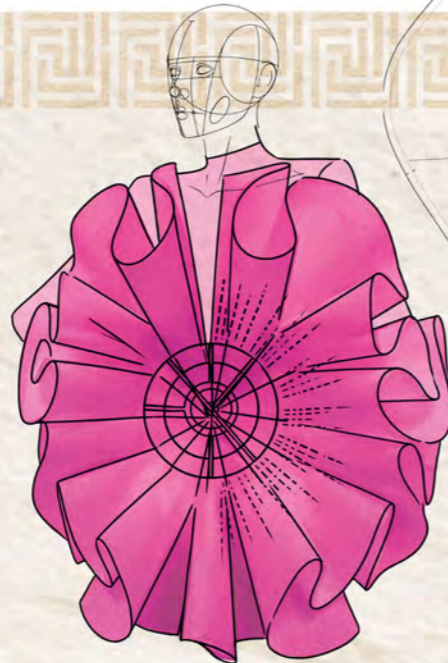
The trousers were designed to be reminiscent of greek pillars, as this is a transitional piece it has less printing on than outfit one but draws the pleats from outfit three to blend the organic and structured forms

The corset sits relatively low to leave space for the pleats whilst still keeping the shoulders exposed

PILLAR OF ATLANTIS DEVELOPEMENT



original concept

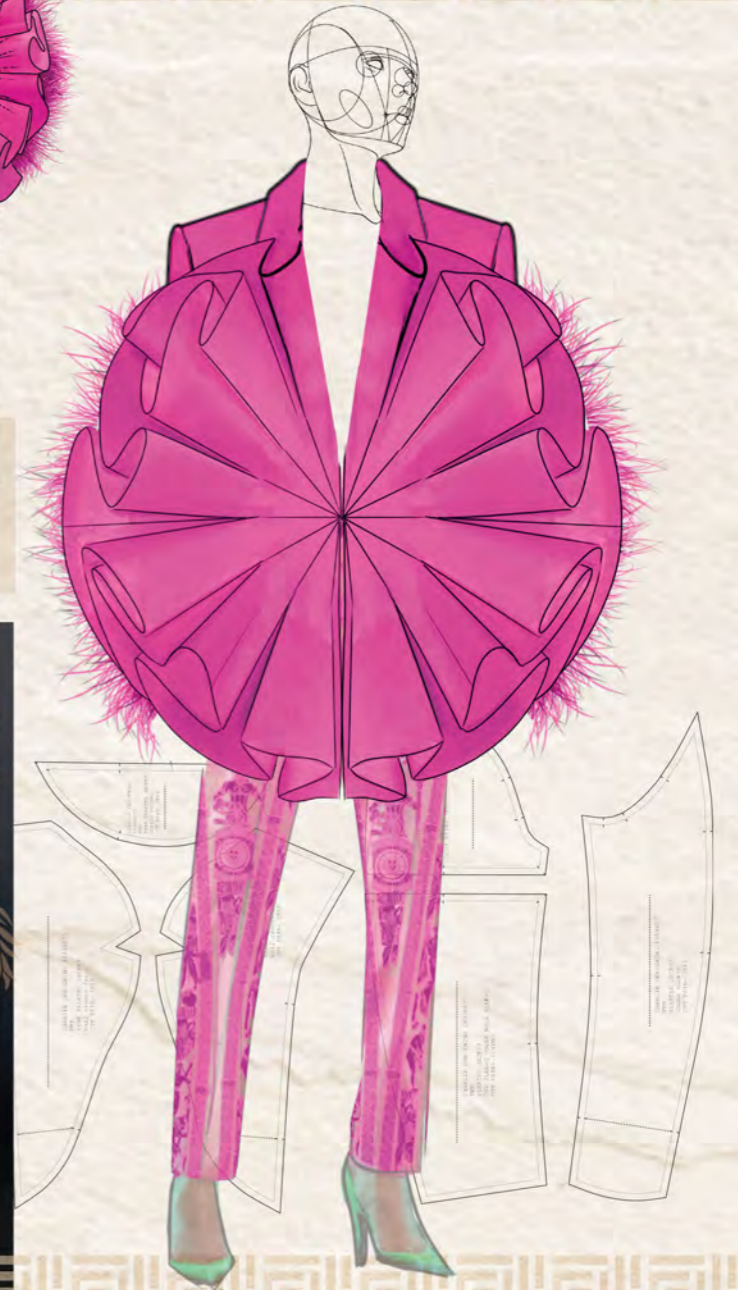


HEART OF ATLANTIS DEVELOPEMENT

This design, based on coral, was initially designed as a dress but once I began hand draping I decided it would be better to combine the fluid organic pleats with structured tailoring to recreate essence of organic coral growing on architecture.



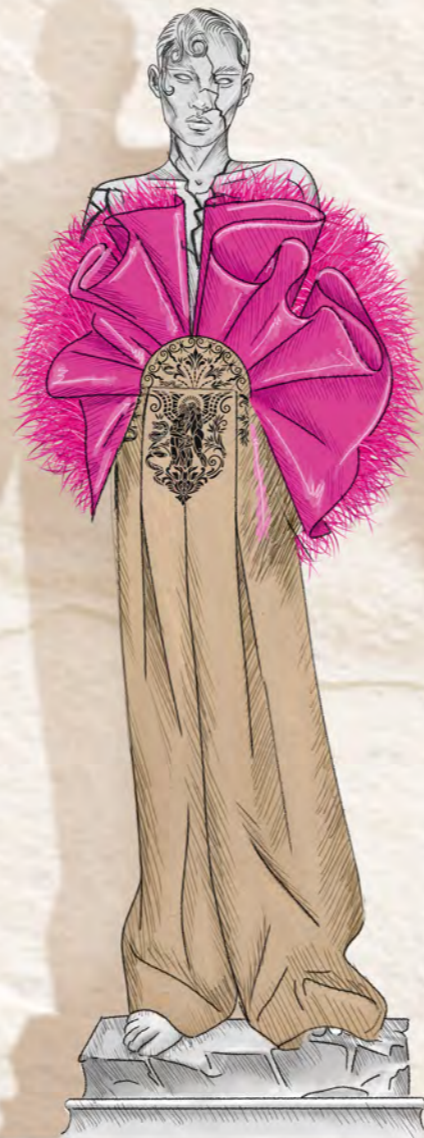
The sleeves contain an internal boning structure to add additional volume so that the feathers could be seen from the front and weren't hidden by the pleats



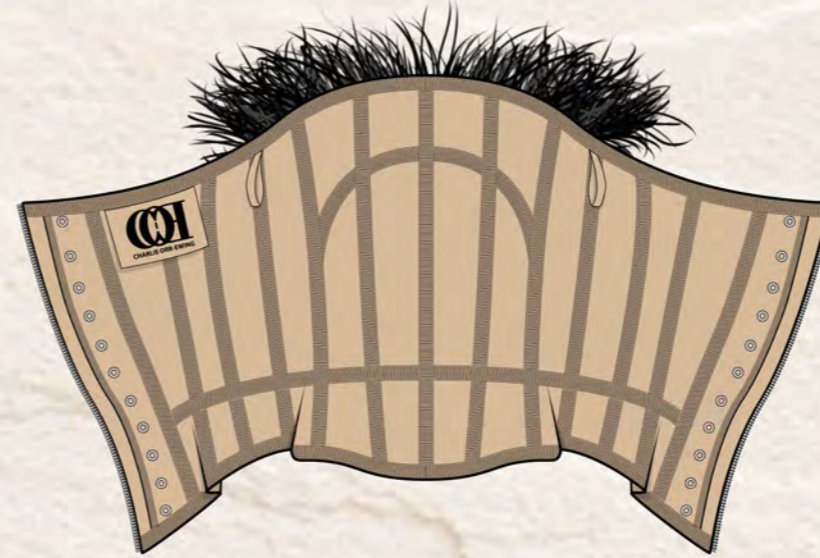
LINE UP



LINE UP



OUTFIT 2 - VASE OF ATLANTIS



CONCENTRIC CIRCLE CORSET
2 Layered boned shaping corset
with black ostrich feather trim.

VASE SKIRT
2 layered structured skirt

Outer decorative layer:
100% wool base overlaid
with black 3D printing on illusion mesh.

Inner functional layer:
Cotton coutil with stay tape and
boning to create structural shape.



OUTFIT 3 - SCROLL OF ATLANTIS



COWL NECK JACKET

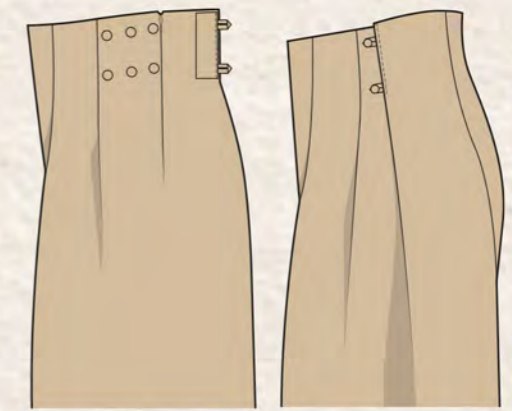
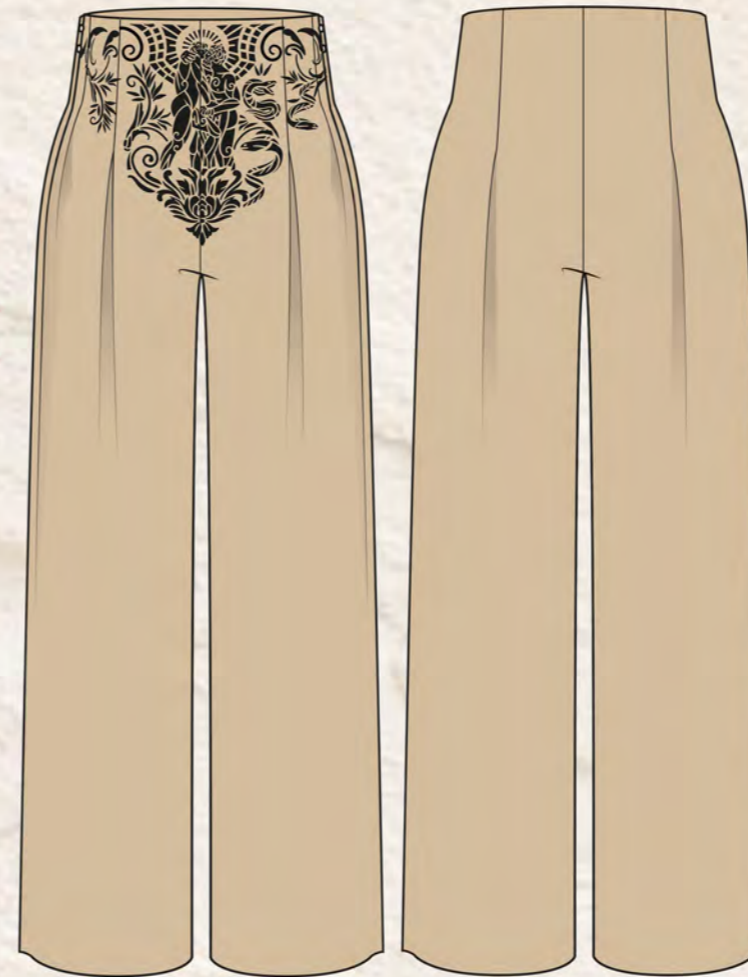
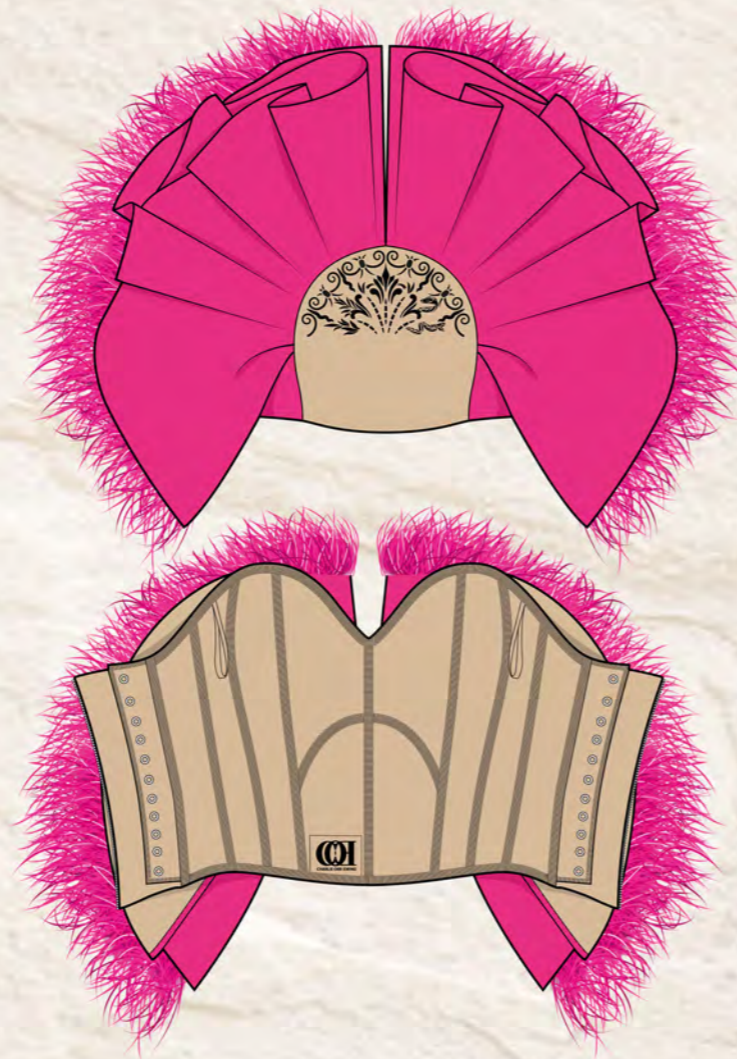
Cowl neck lapel jacket made from 100% wool finished with 3D printed bead artwork on illusion mesh.



PRINTD MESH CIGARETTE TROUSERS

Cigarette fit trousers made from 3D printed illusion mesh

OUTFIT 2 - PILLAR OF ATLANTIS



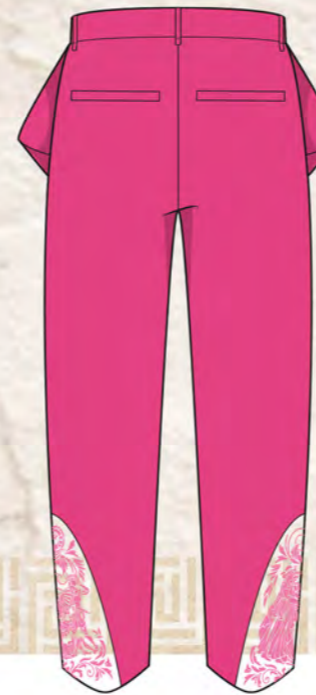
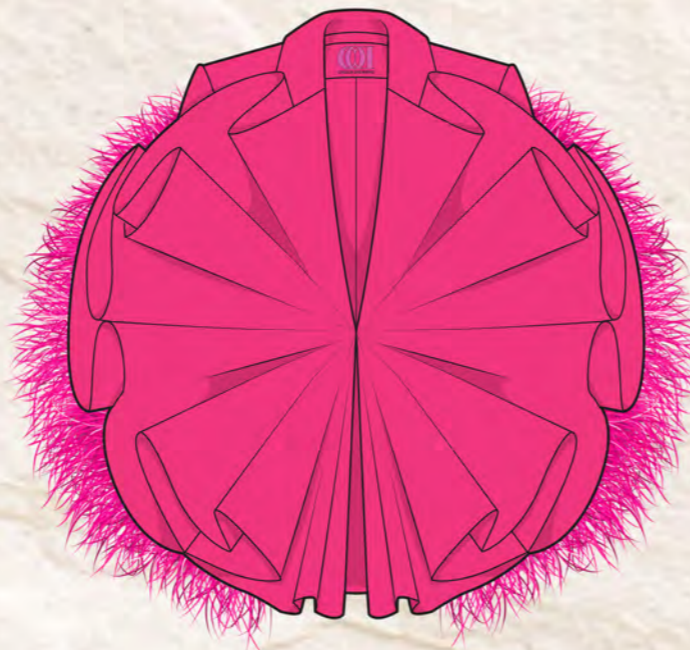
PLEATED FRONT CORSET

Corset constructed from 2 layers of sand wool with 3D printed illusion mesh and pink cotton spandex and ostrich feather pleats.

PLEATED COLUMN TROUSER

100% wool pleated trouser with 3D printed detailing and concealed fastenings.

OUTFIT 2- HEART OF ATLANTIS



PLEATED CIRCLE JACKET

Tailored jacket with pleated circle technique integrated into lapel

Boned ostrich feather ball sleeve

Cotton spandex with ostrich feather trim

MESH PANEL PLEATED TROUSER

Pleated trouser with 3D printed mesh panel at hem

Cotton spandex with illusion mesh