

Images from Arlesey village archive. Dating from 1890-1920.

*Carhartt*

LONDON MADE  
RALLS  
ANIZED  
LABOR

WHERE  
ARE YOU  
GOING?  
WHERE  
HAVE YOU  
BEEN?  
WHAT  
ARE YOU  
DOING?

The Destruction of local land by new building developments is harming the British countryside irrevocably. We are at the point of no return. Rural Britain being lost forever. The challenges facing my local area means we must redraw our way of life. Taking inspiration from the historic folk law of my village, such as fairy rings, and clashing it with the workwear of the builders changing the face of the countryside and using locally sourced and deadstock fabrics, I draw on traditional techniques such as smocking and forms of knitting to create high quality sustainable garments that last. We must keep our heritage alive.



Arlesey is a long village with an equally long chronicled history. Arlesey (ARL-zee) is a town and civil parish in Bedfordshire. It is near the border with Hertfordshire, about three miles north-west of Letchworth Garden City, four miles north of Hitchin and six miles south of Biggleswade. Arlesey railway station provides services to London, Stevenage and Peterborough. The Domesday Book mentions Arlesey. The town's name means the island of a man named Aelfric



Inspiration from the brick workers from Arlesey as pictured below working on digging out material for the Arlesey Whites



Heavy seams and collasic collars



Back seam on most traditional workwear garments to create a fitted shirt at the top but loose fabric on the body for comfort



Exploring traditional workwear. Focusing on French chore jackets. The idea of make do and mending old clothing and using old materials to show this. The use of run and fell seams throughout to create cohesive collection along with boxy oversized fits



Arlesey had a thriving brick making industry through to the mid twentieth century. As of 1900 there were five brickworks around the town. They were known for the Arlesey White bricks produced from Gault clay. Bricks have not been produced there since 1992. Some clay pits have been used for landfill and others are now lakes. On the south east side of the town there were two chalk pits operated by the Portland Cement Company. The Blue Lagoon is now used for sailing and the Green Lagoon for fishing.



MODERN BRITISH FOLKLORE PORTRAIT  
**ARCADIA BRITANNICA**  
 HENRY ROYANCE



DeWalt Pro Tradesman  
 Trousers Black 34" W 33" L  
 £36.99

- 2 x Black 3 x 6 cm...
- 2 x Black 3 x 6 cm...
- 2 x Black 3 x 6 cm...

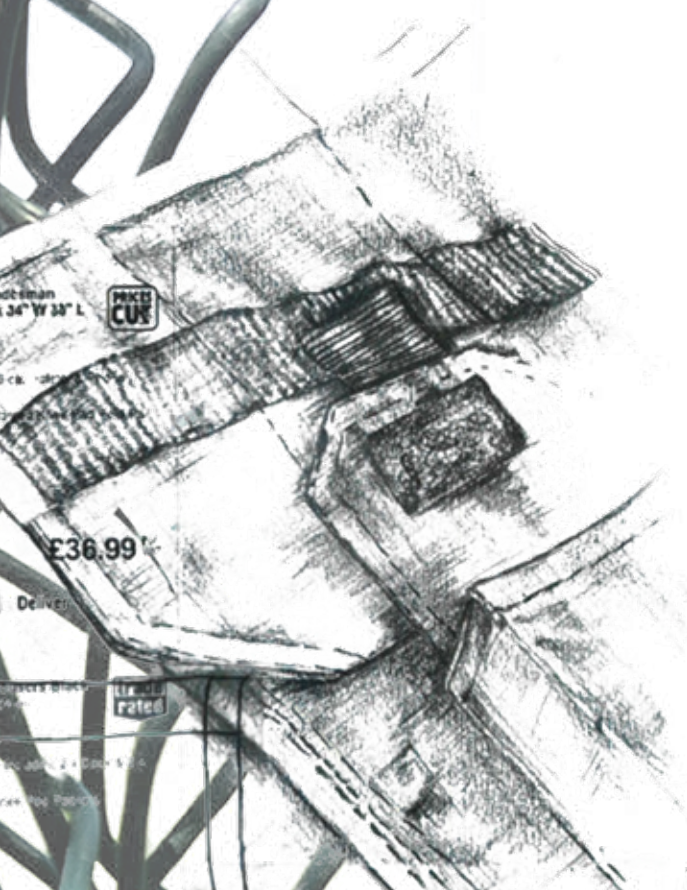
£36.99

DeWalt

34" W 33" L

2 x Black 3 x 6 cm...

2 x Black 3 x 6 cm...



Exploring more modern workwear, I used my neighbours workwear trousers to develop shapes on the stand to guide my design work.



Chore jackets are known for the fell seams and patched up panels. I explore here the circle motif inspired by fairy folk law to inspire my seam lines



Final chore jacket from LOOK 1. Accompanied by matching hat inspired by hard hats and work bags

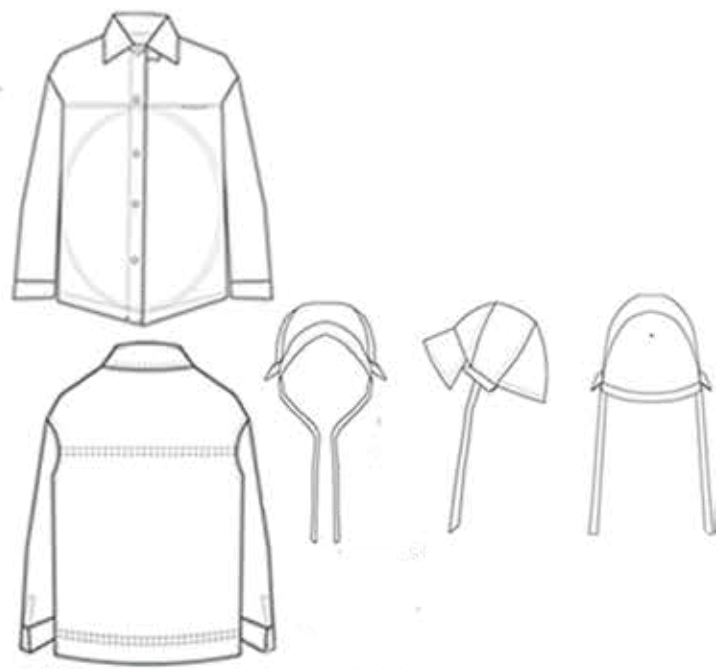


# BROWN DUCK INSULATED COVERALL



- Heavy duty 100% cotton
- Brown Duck
- Heavy weight insulation for
- warmth in dry climates
- Heat and cold combined
- fabric
- Heavy, workable weight
- Carhart's Super
- Black Duck
- Wash or dry clean
- Warm, soft and easy to wear
- Heavy duty fabric of choice
- Heavy weight main body
- Available in men's, child and women's
- Design of the product, 2 front pockets, 2 chest pockets, 2 side pockets, 2 chest pockets, 2 side pockets
- Features: Ribbing, flat top

Please Note: Available in LARGE SIZE







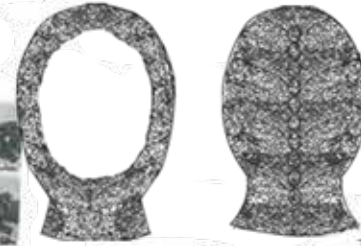
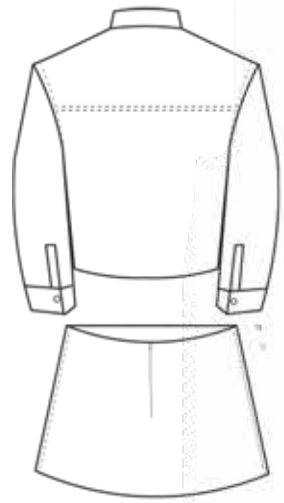
Continental Jacket in Flat F

Construction for ease of motion  
front and back  
and single-shoulder attached front-panels  
with open-ends in kimono  
back  
with a single-shoulder-attached front-panels  
with open-ends in kimono



Inspired by Traditional english methods of weaving, knitting and knotting I developed my own method of knotting british wool together in to a circle motif. the technique creates the effect of dappled light in trees or plants growing over building or other nature.

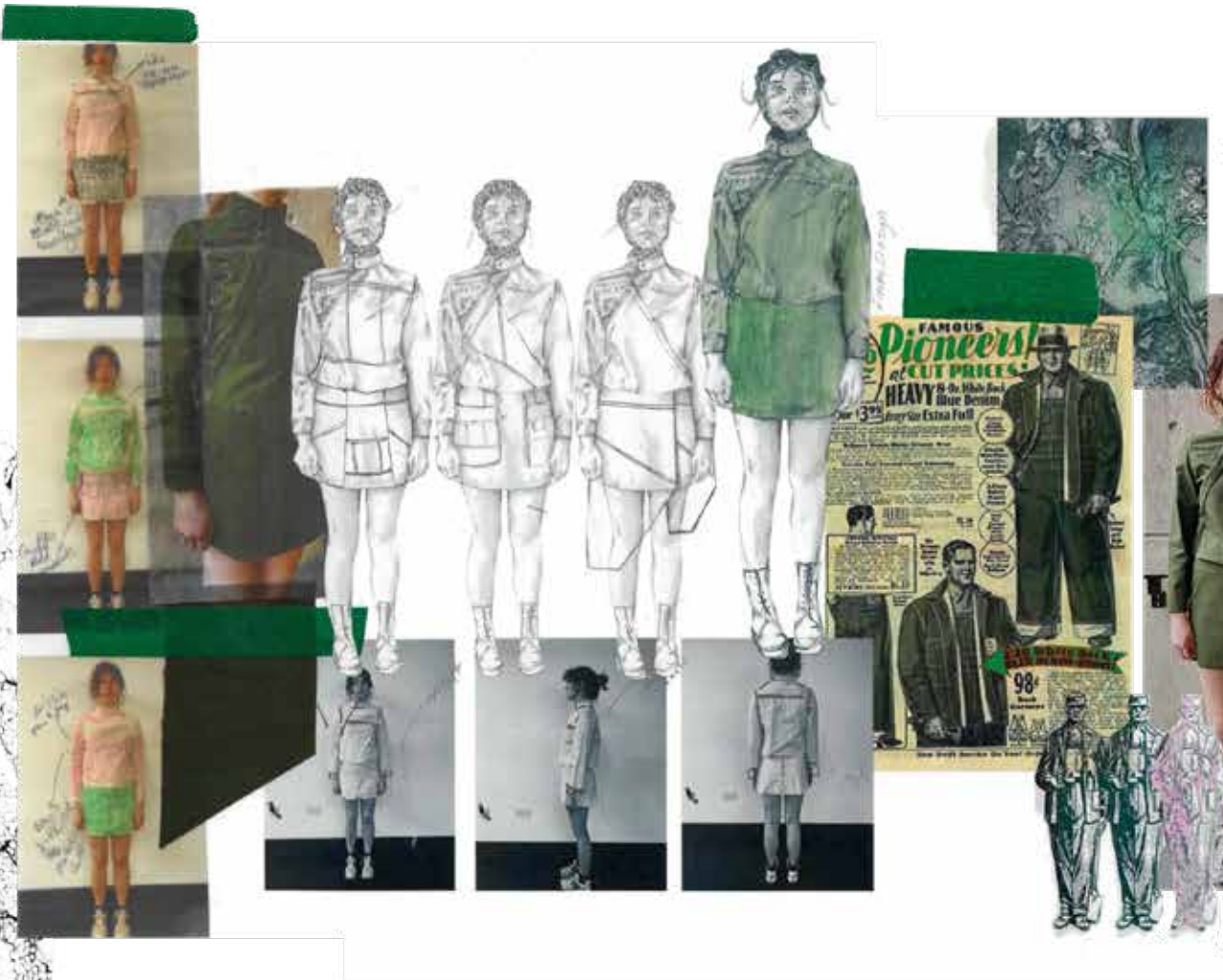
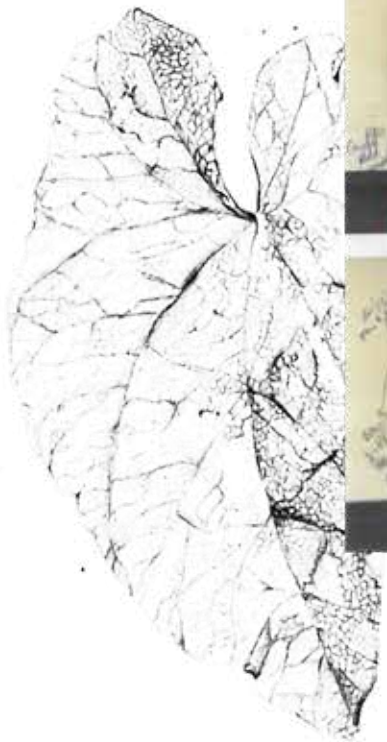




The village eventually became three distinct manors. Etonbury with land to the north of Stotfold Road, reaching as far as Astwick, Arleseybury from land south of Stotfold Road to around where Howberry Green now is, and the manor of Lanthony from Howberry Green to the south of the parish. This manor was owned by a Welsh order of monks.



Design work exploring lines found in the new building works in Arlesey and workwear details such as patch pockets.



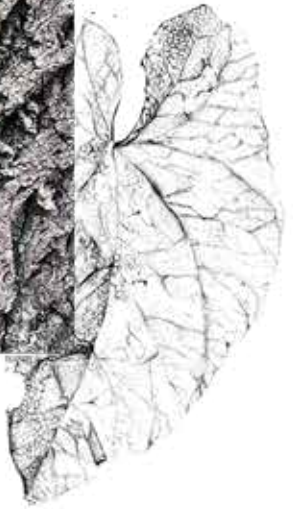
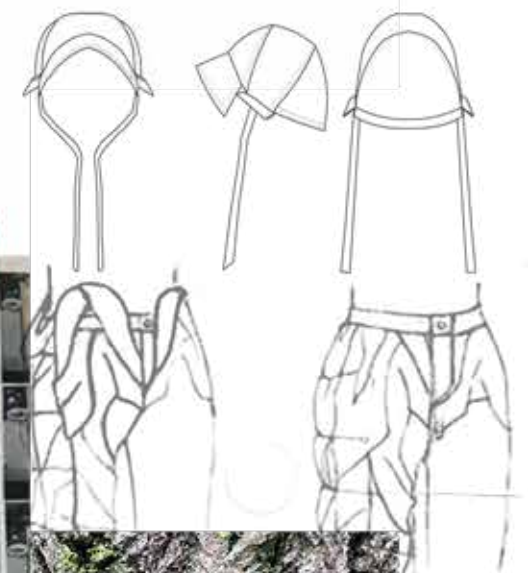
Heavily inspired by the workwear of my village both past and present this design explores a modern and feminine approach. With a hidden button stand and fell seams



LOOK 2. Made from 100% deadstock materials

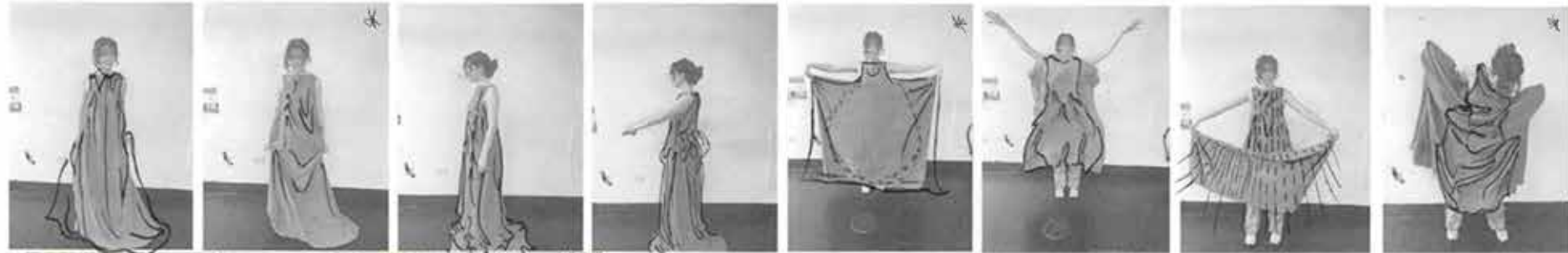
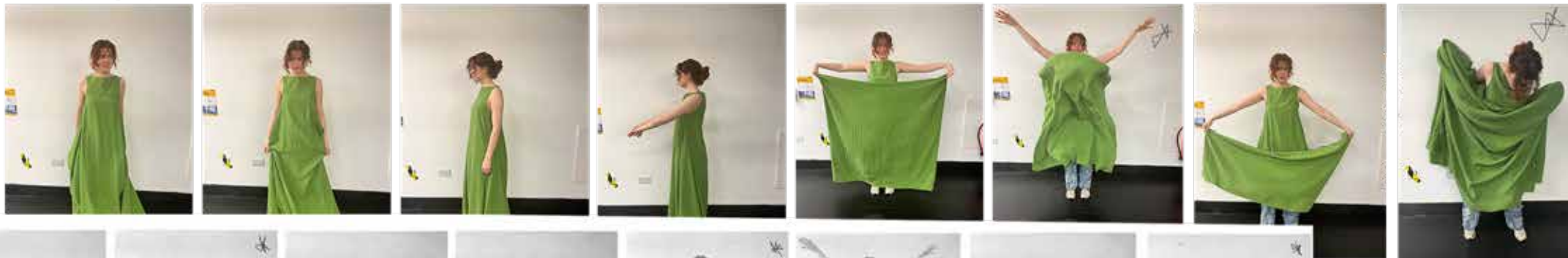


Smocking inspired by traditional english textiles from Arlesey. Fabric is end of roll and was saved from being thrown out. Using tree bark and river reids to inspire textiles





Exploring Shapes on the body and movement inspired by dance and fun



LOOK 3.

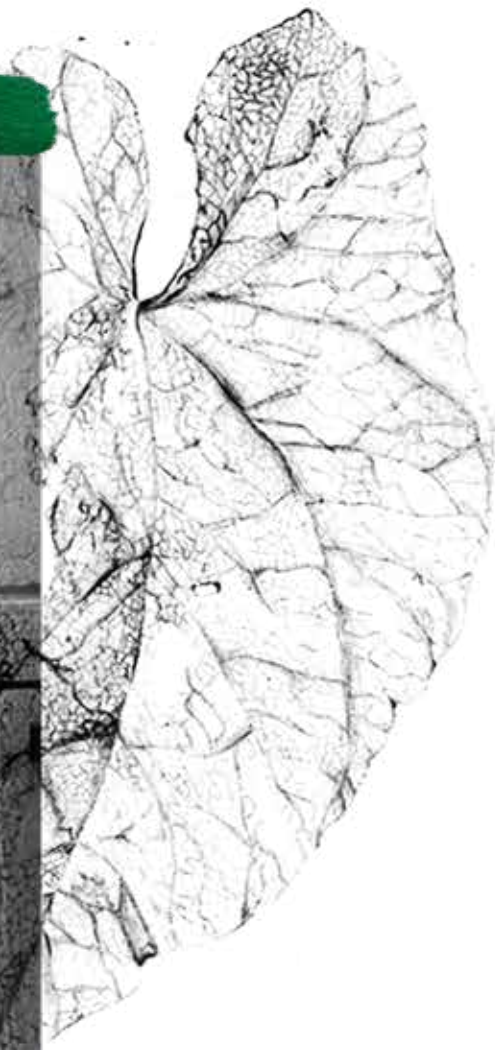
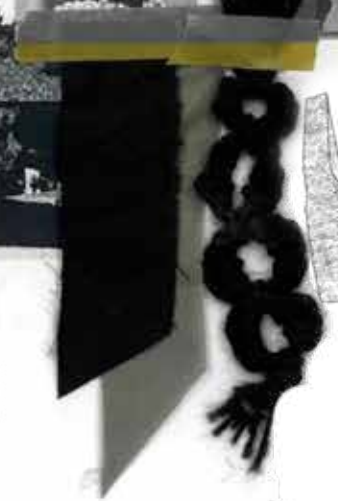
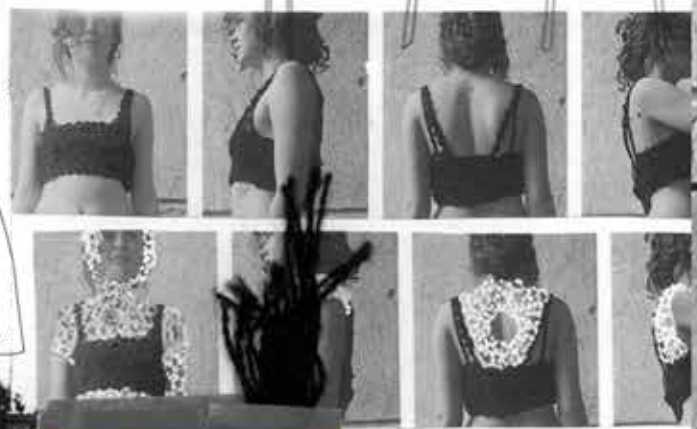
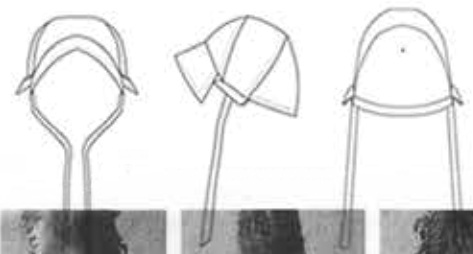
Using the traditional technique of smocking this look is made out of end of roll fabric which was in the pile to be binned. Smocking has created the same feeling of the reeds in the river or the endangered bark that grows on Arleseys trees.





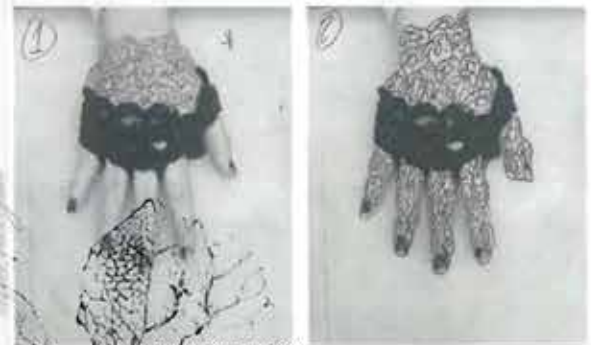
Building on first look jack. Combining both traditional and modern concepts of workwear. All fabrics used are dead stock and are creating a sustainable collection. Carpet fabric provided by simon from Artesey





Hand knotting top inspired by dappled light and decaying leaves. mixing traditional and modern workwear to create designs .

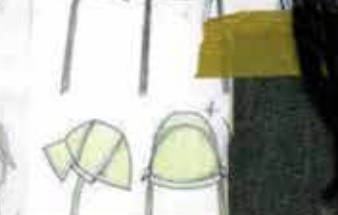




Accessories inspired by workwear gloves and textile of hand knotting. creating heavy gloves but with a hand method and delicate textile



**Carhartt**  
 BLANKET LINED  
**"BROWN DUCK"**  
 Best Set for TOUGH  
 In the line of all-weather  
 work clothes, Carhartt's  
 "Brown Duck" is a  
 heavy weight, blanket lined  
 work shirt. It is made  
 of a special blend of  
 cotton and flannel  
 fabrics. It is the  
 most comfortable  
 work shirt you can  
 wear. It is available  
 in sizes 34 to 44.  
 Open Stock "T" T  
**LEED'S** JERRY S. LEED  
 11 W. Franklin St. — CHICAGO



DAVID OATES PHOTOGRAPHY



*Handwritten notes:*  
 One side of  
 the fabric  
 has a  
 different  
 texture



Accessories inspired by hard hats of modern buildings and headcovers which go under the helmets, using a mix of hand made textiles and deadstock fabrics



