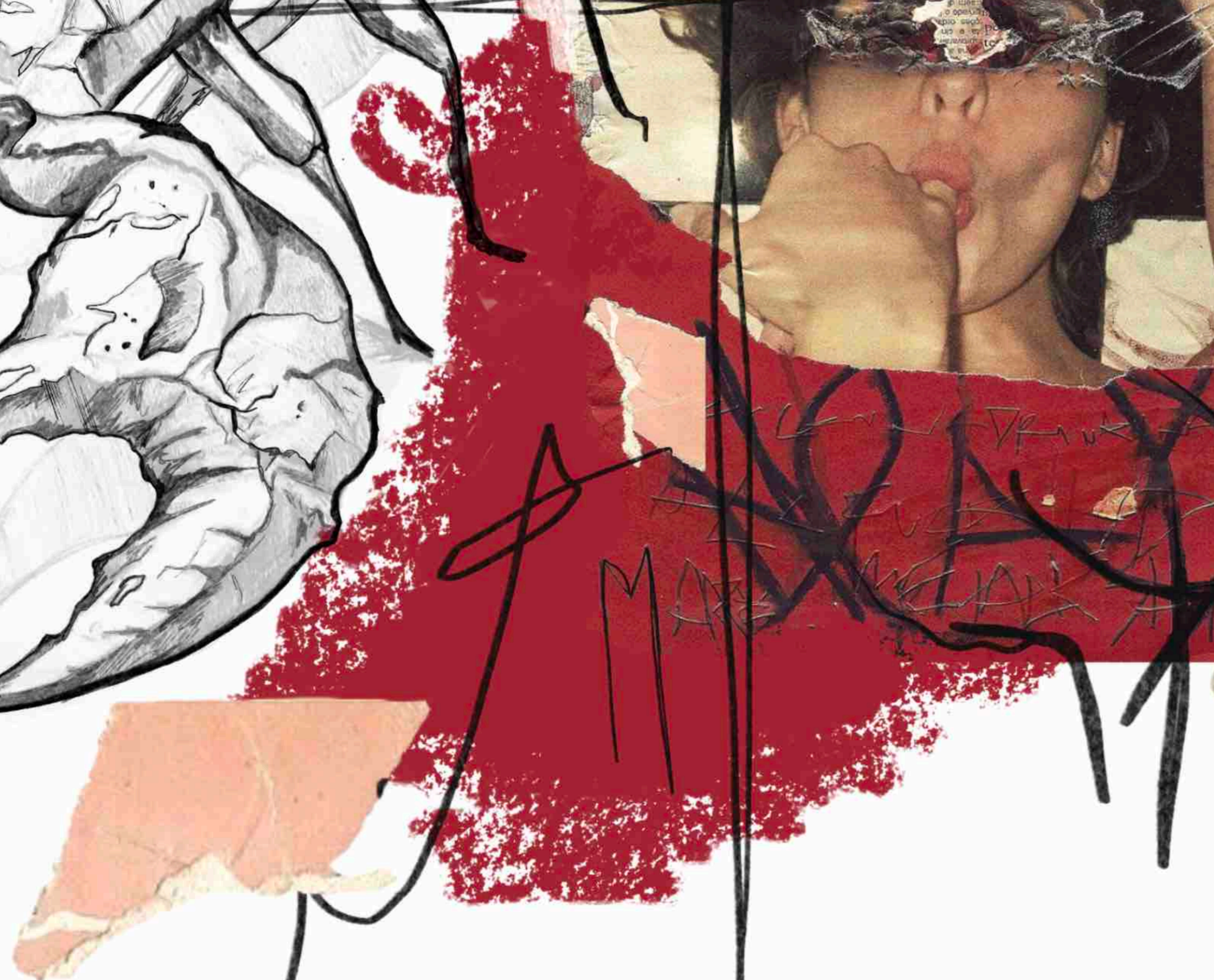
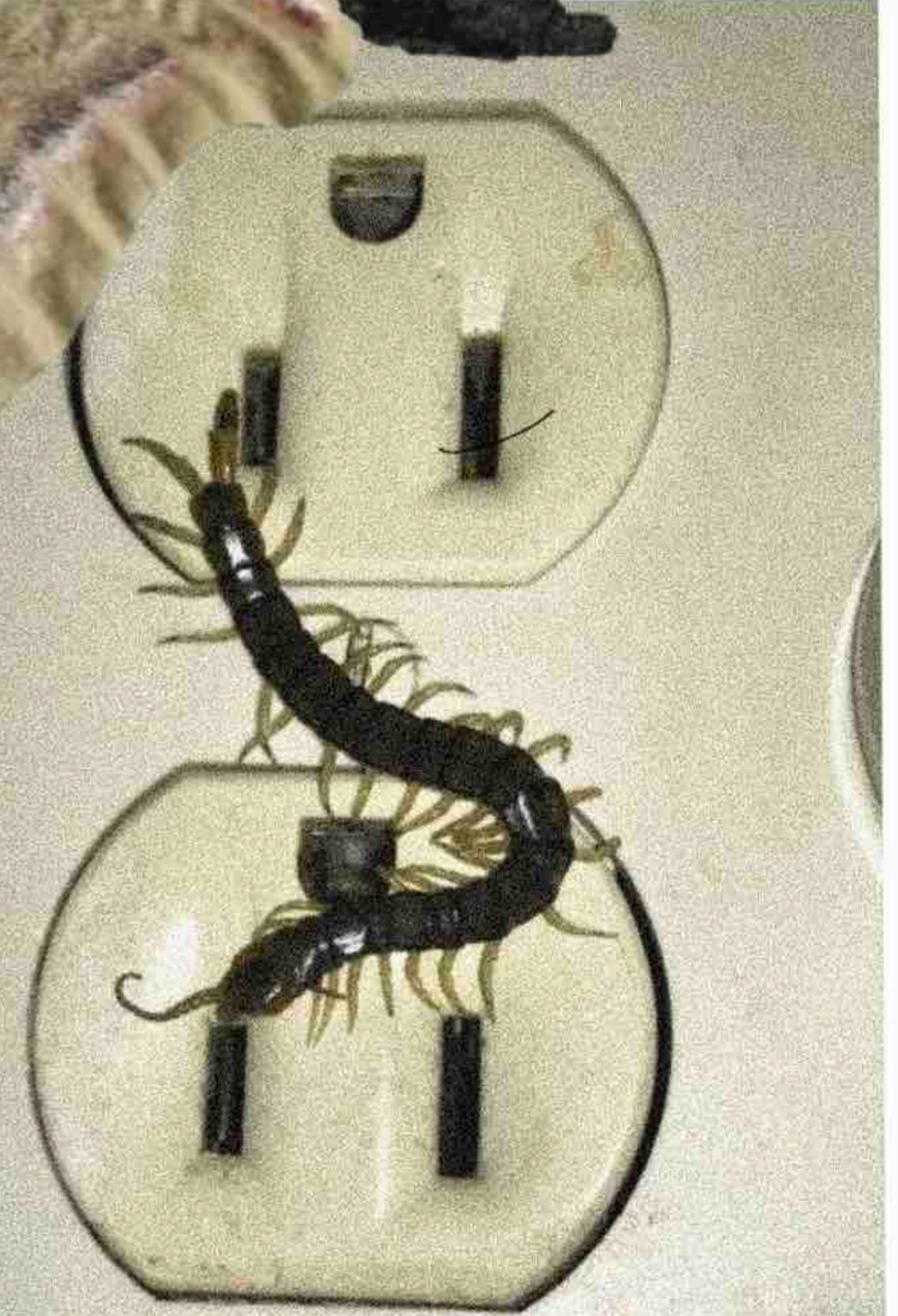
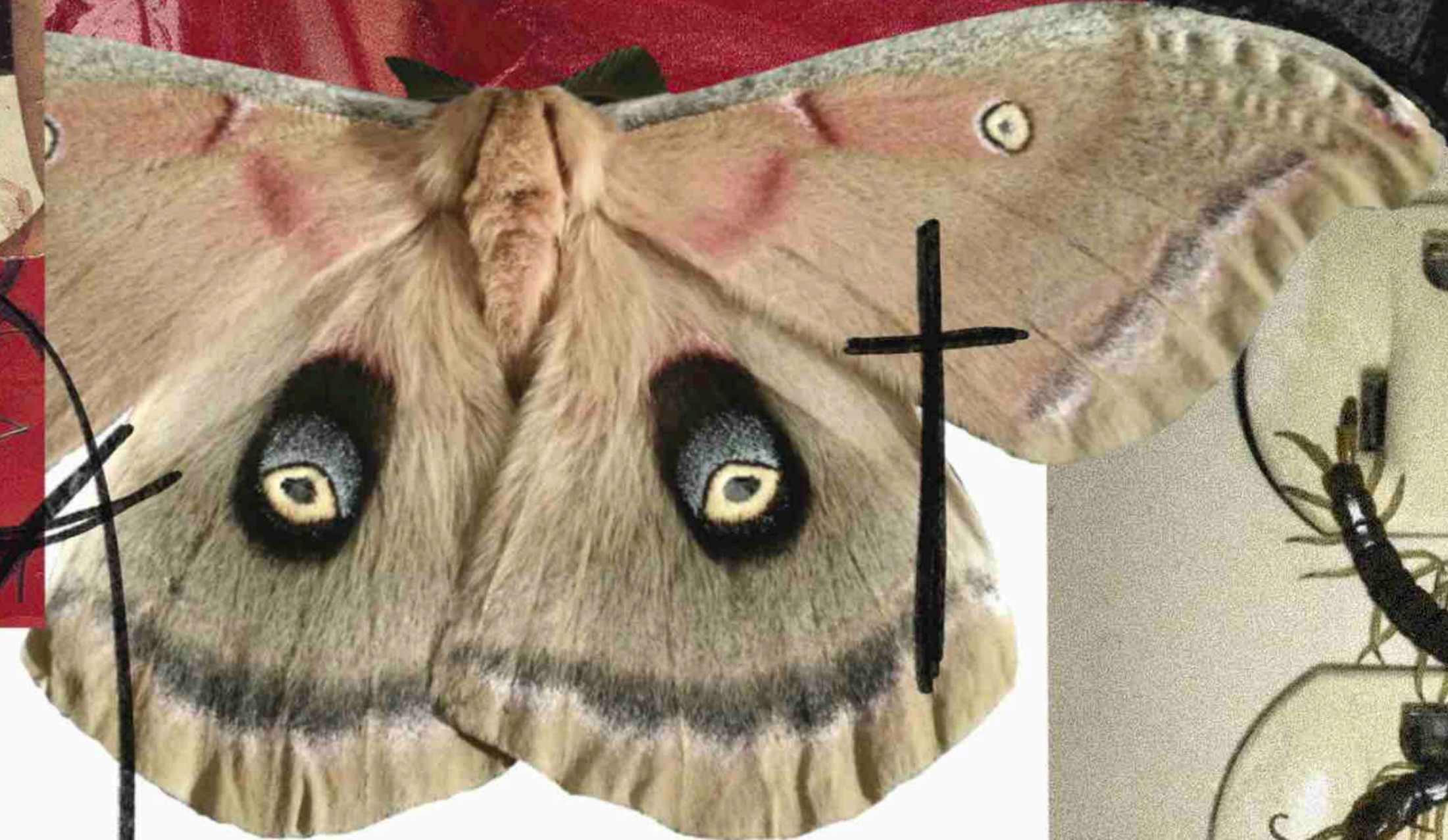
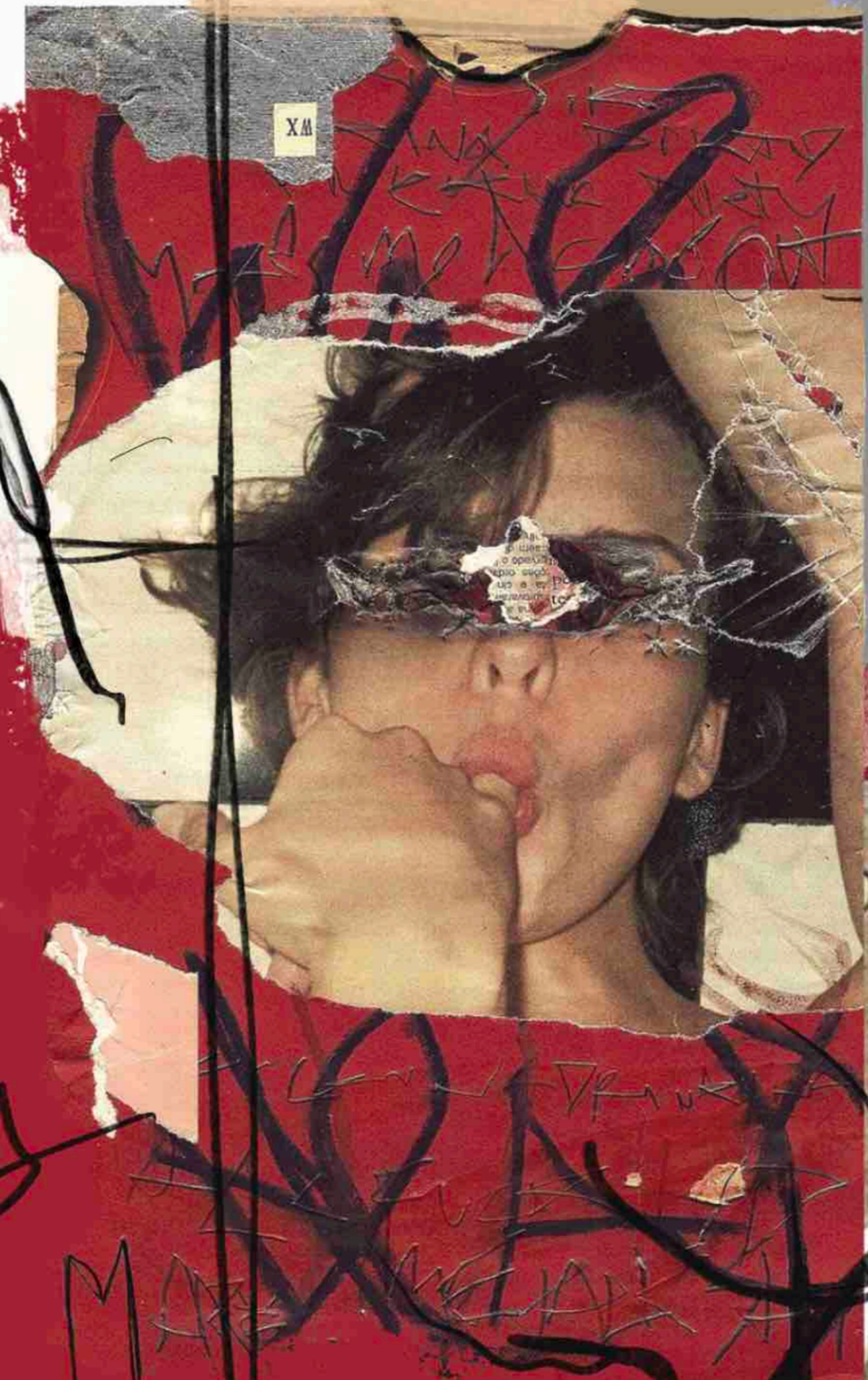
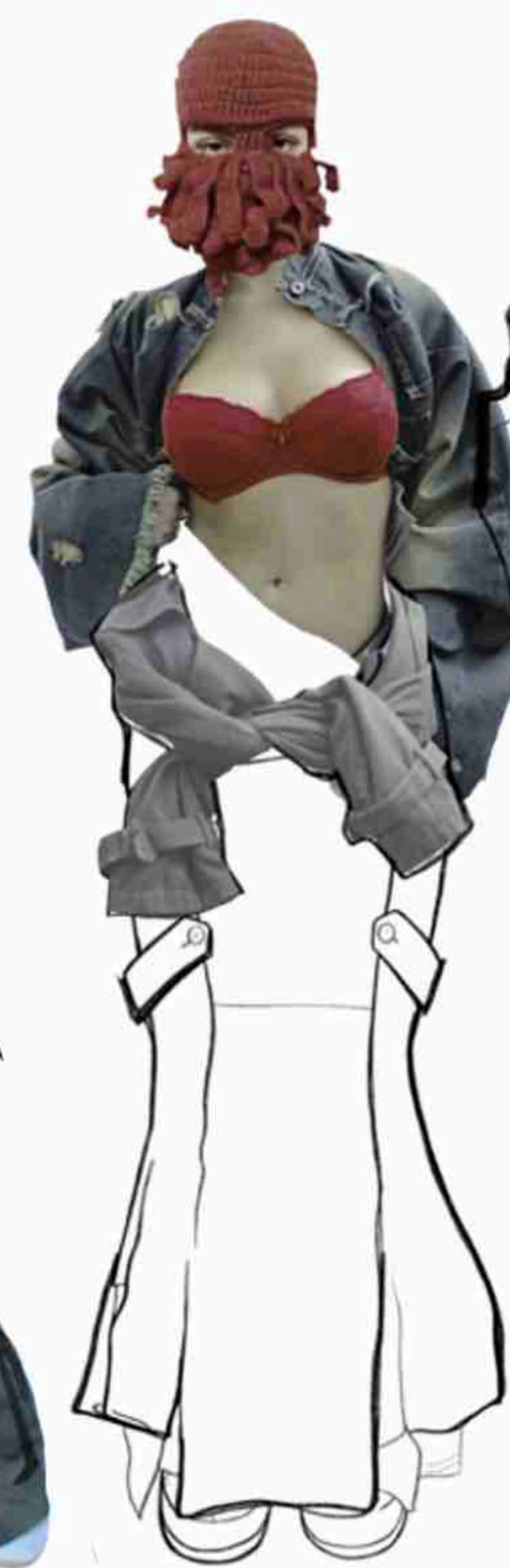
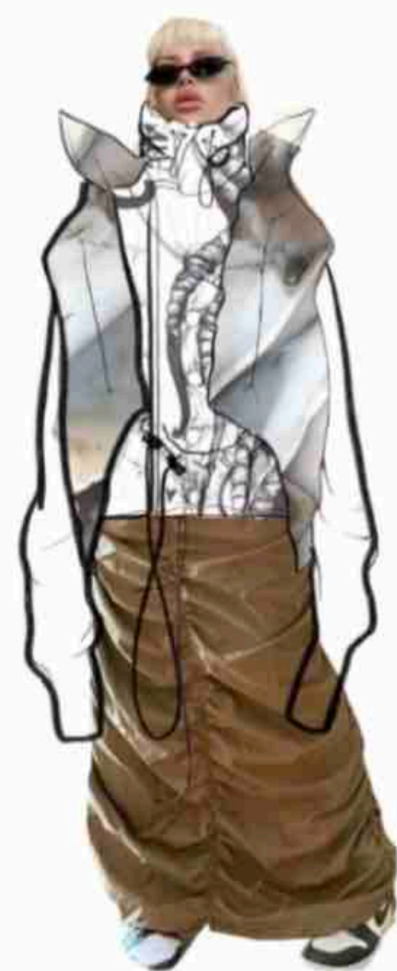
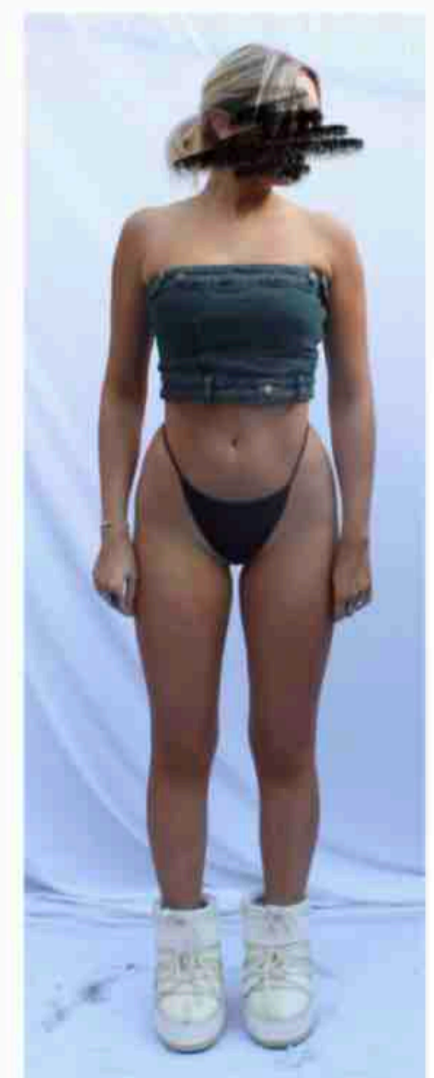


CHALLENGING THE FINE LINE BETWEEN BEAUTY AND GROTESQUE

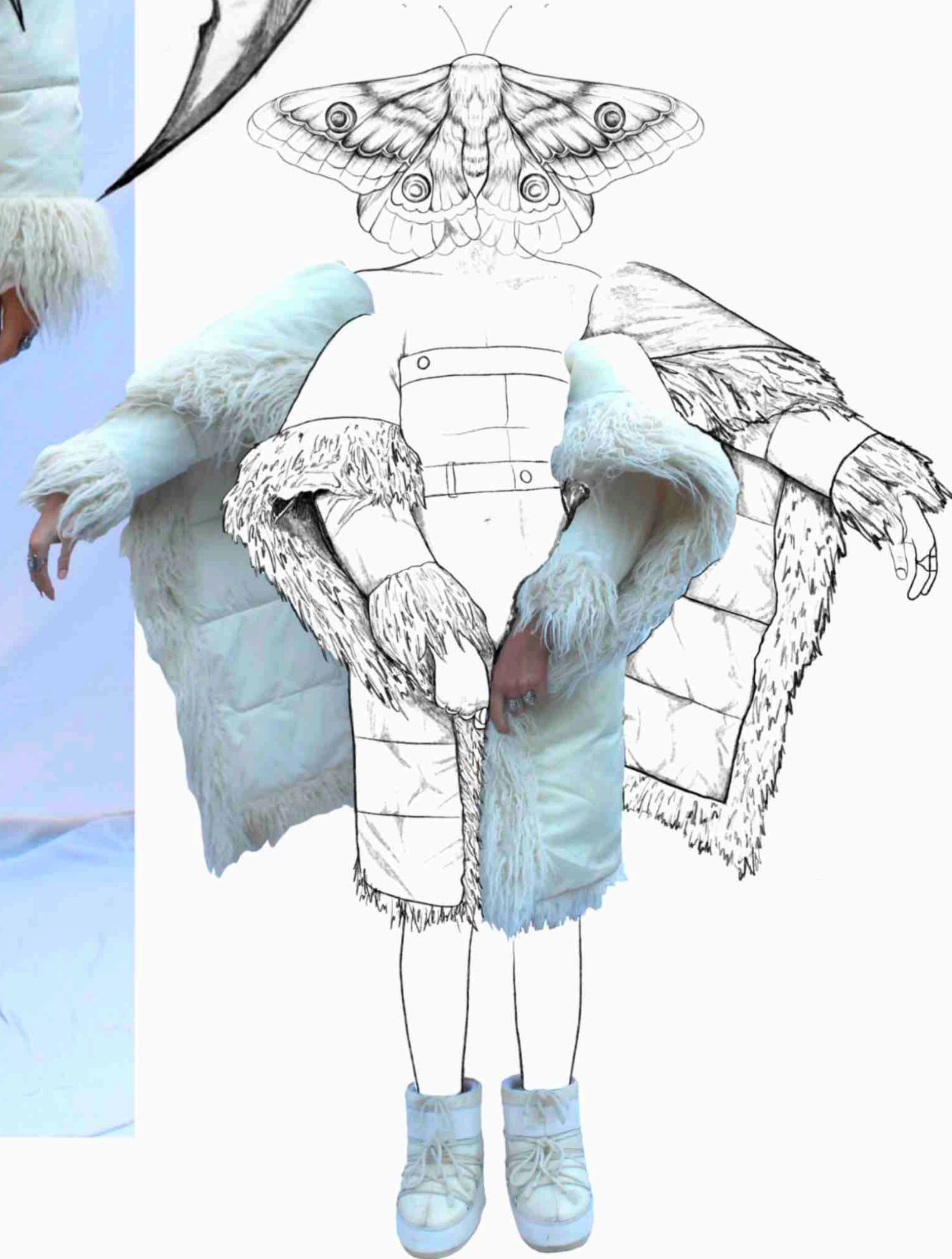


*self styling exercise*

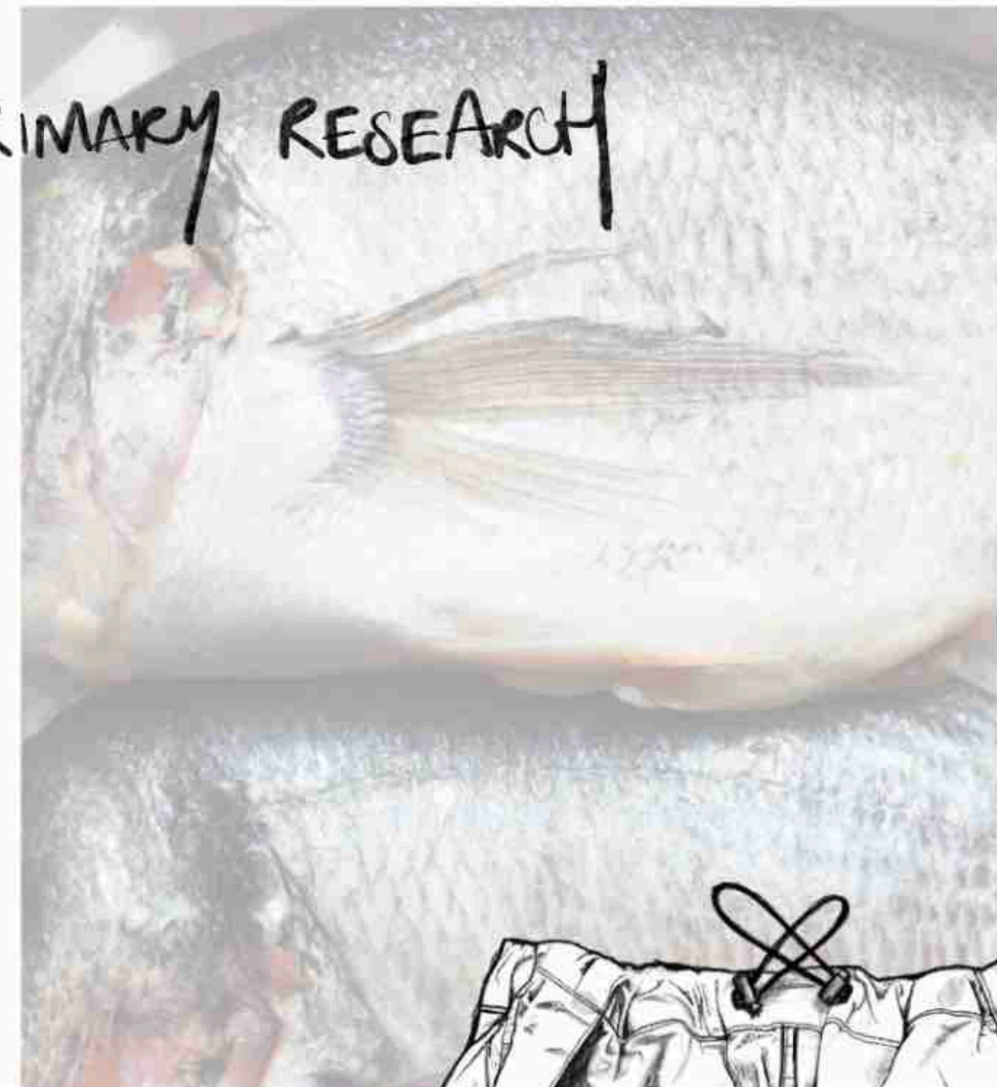


*collage into design work.*

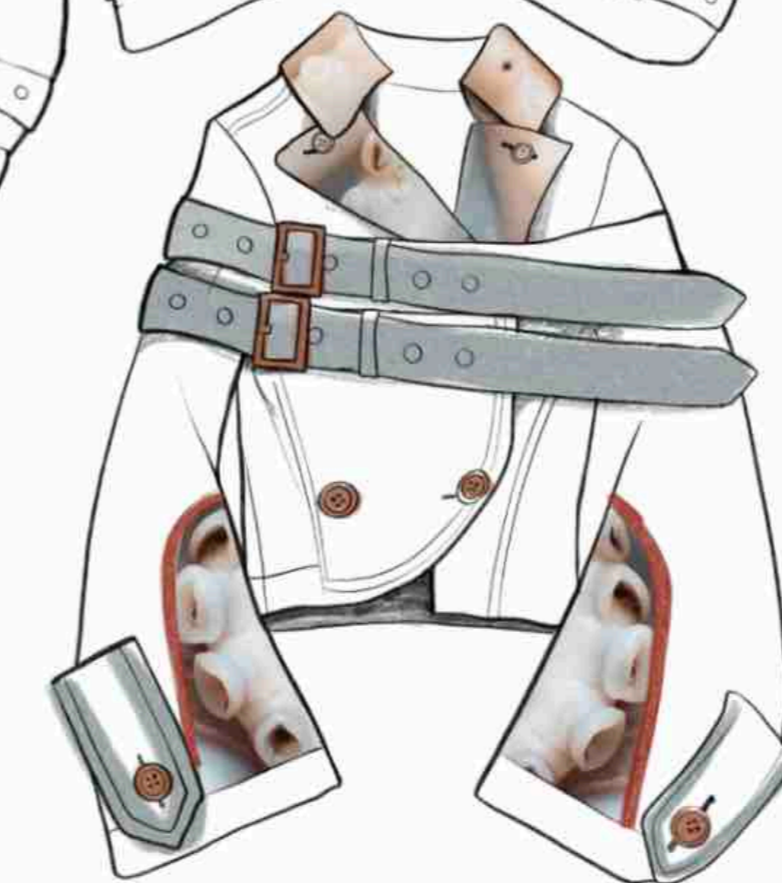
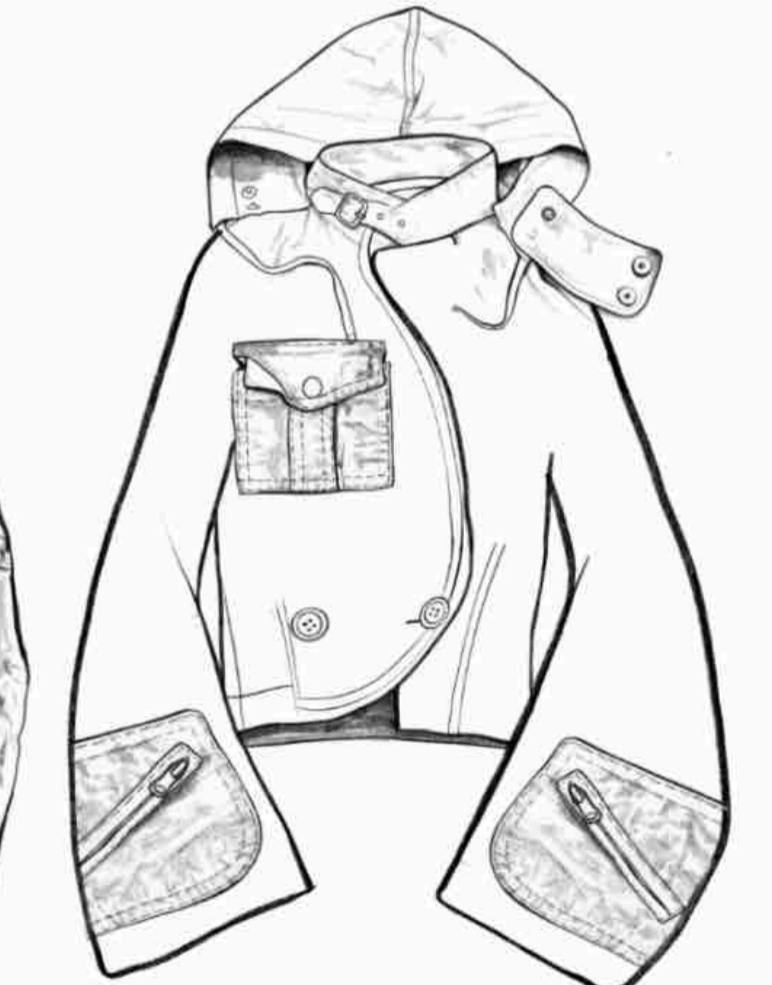
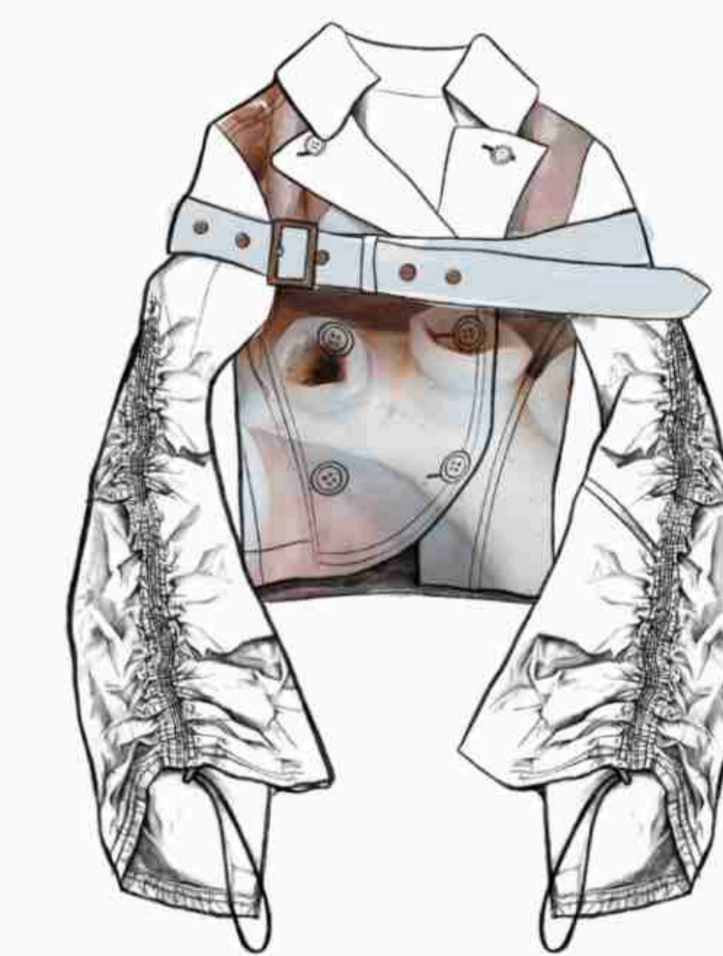
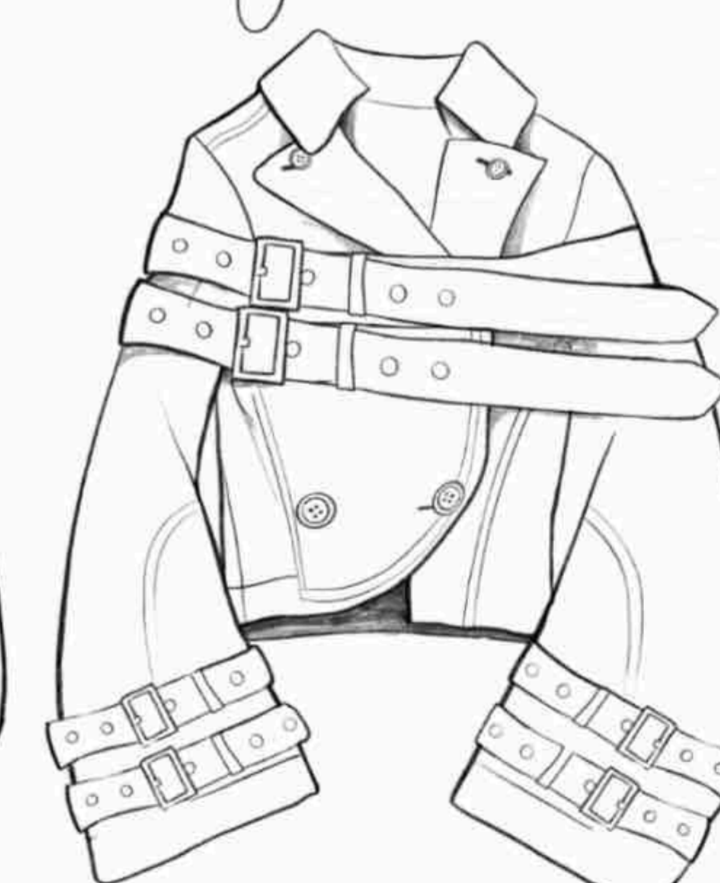
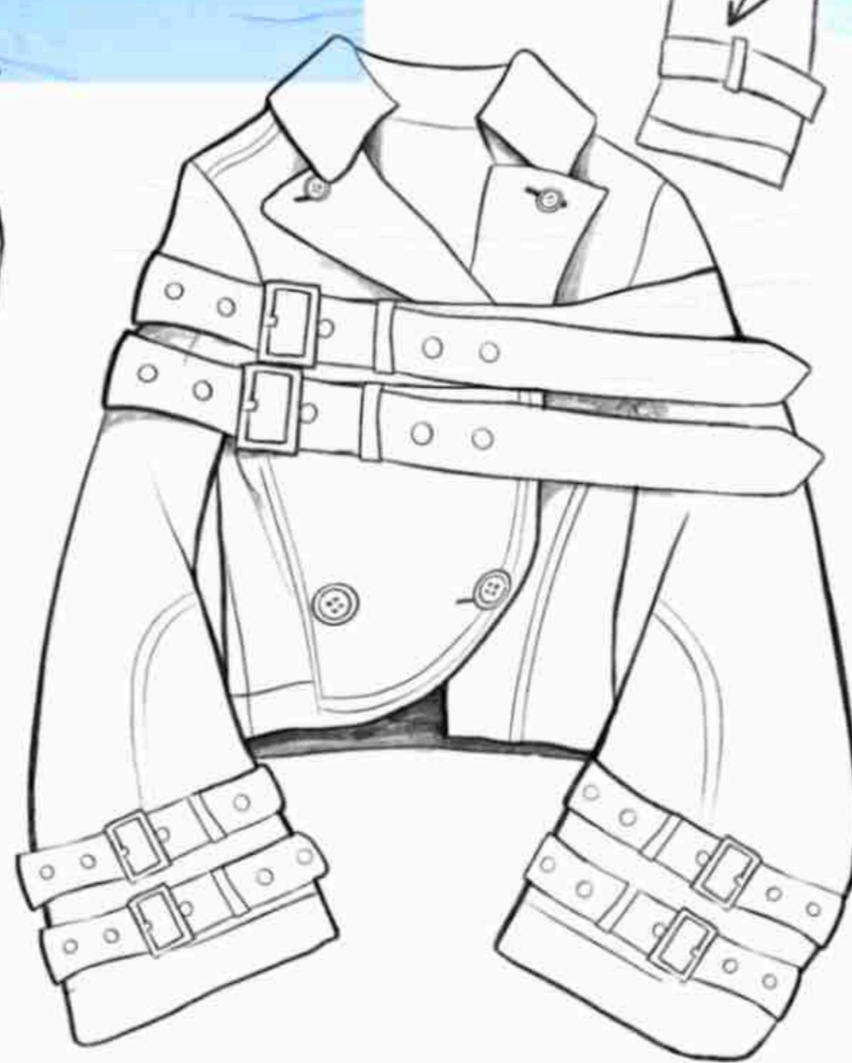
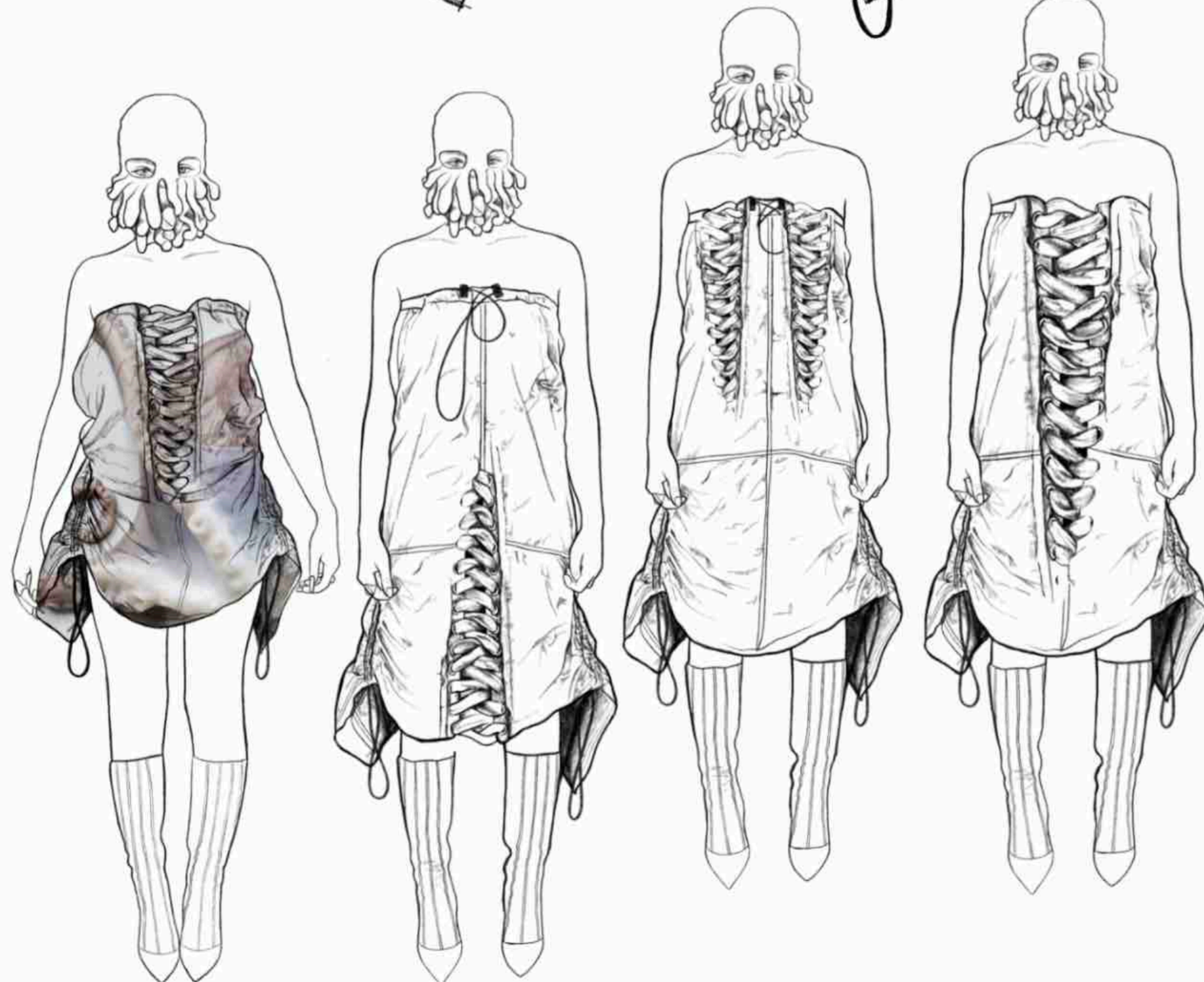
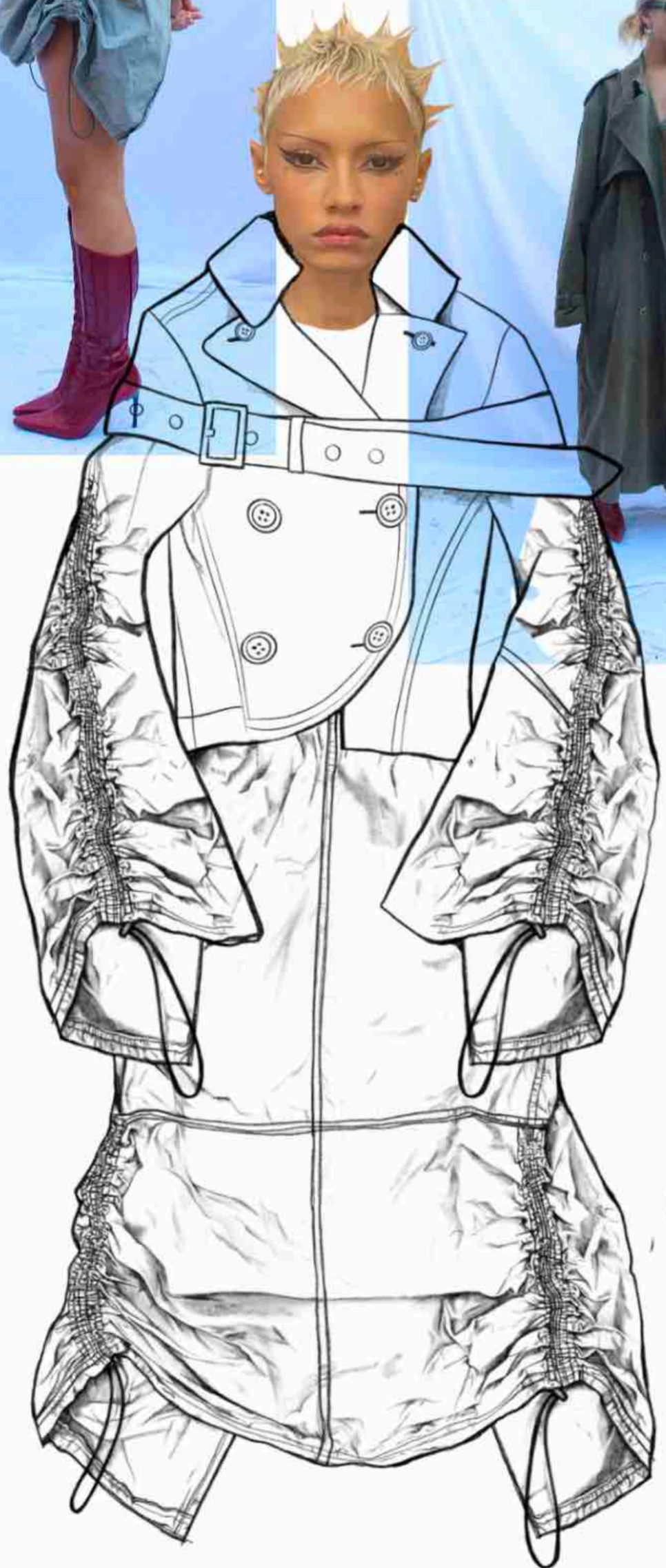
SELF STYLING.



PRIMARY RESEARCH



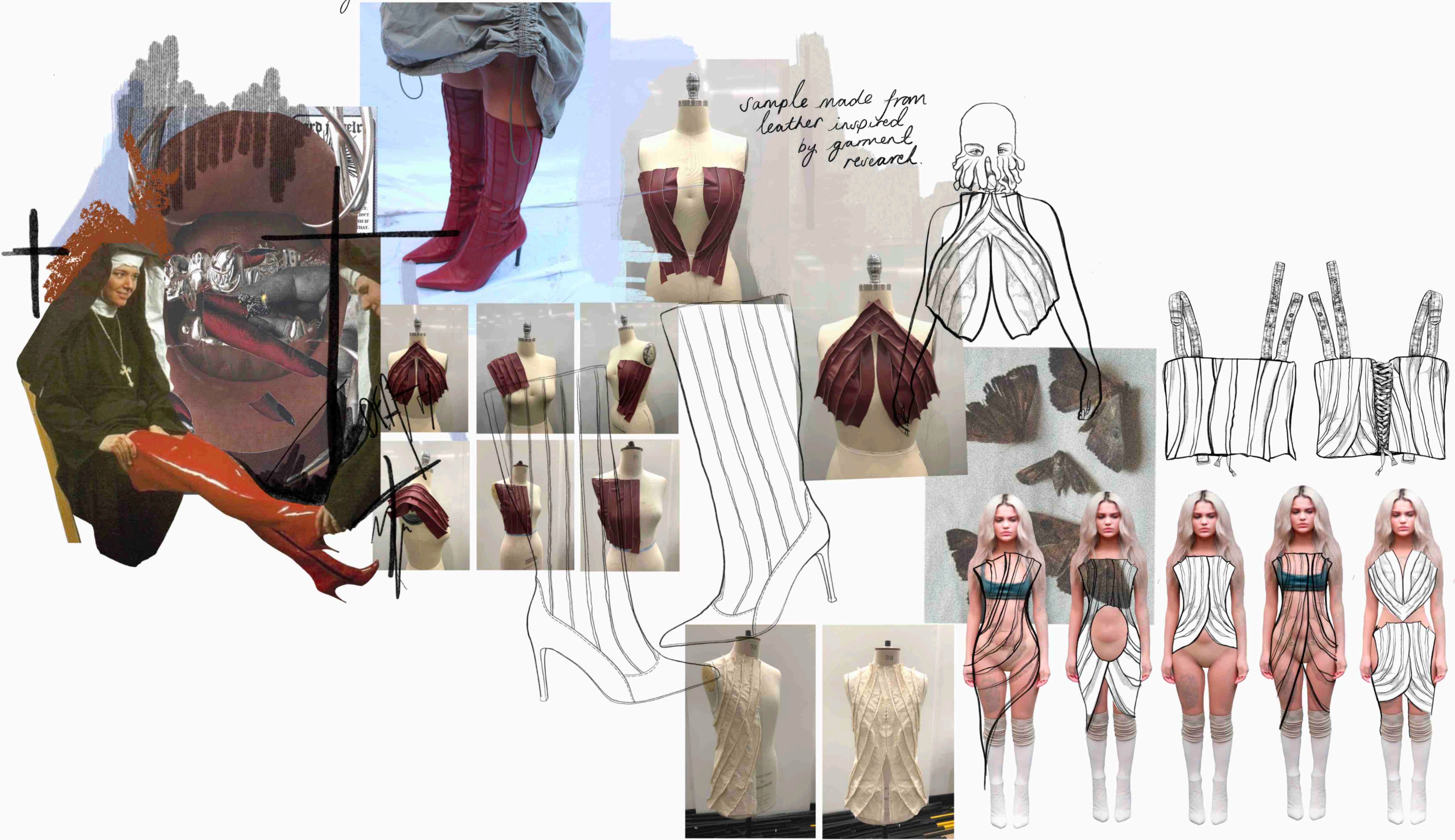
MY SAMPLE

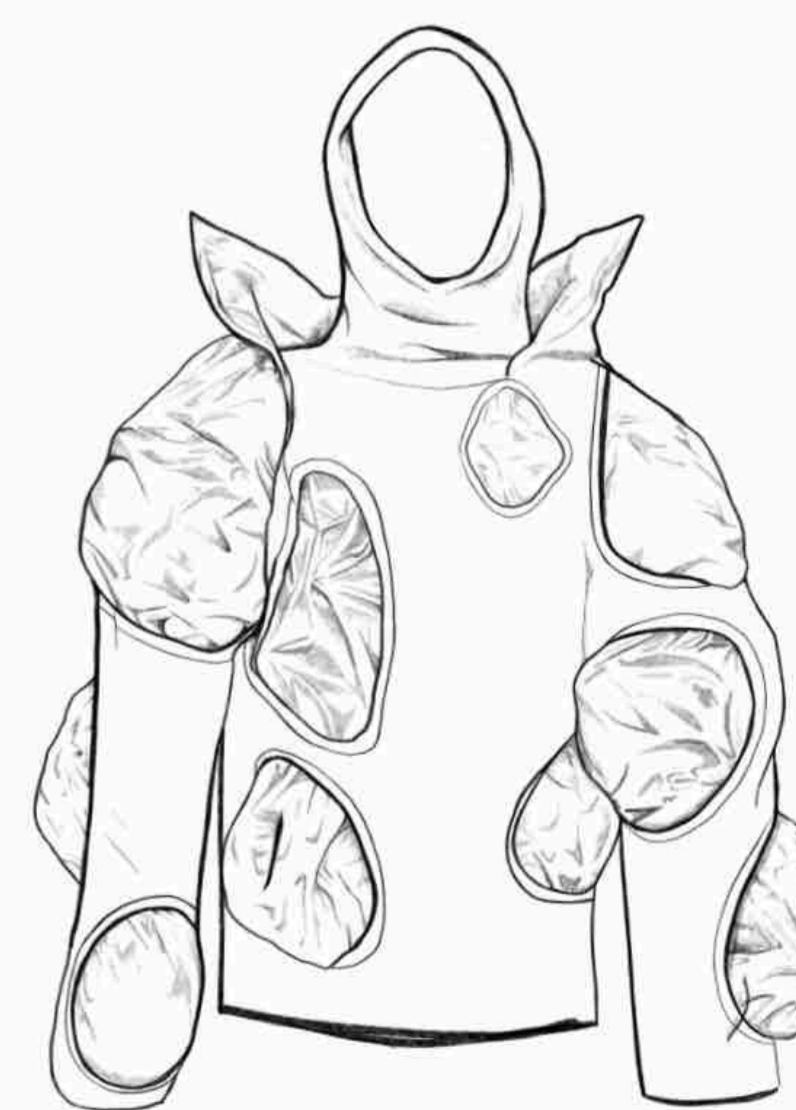
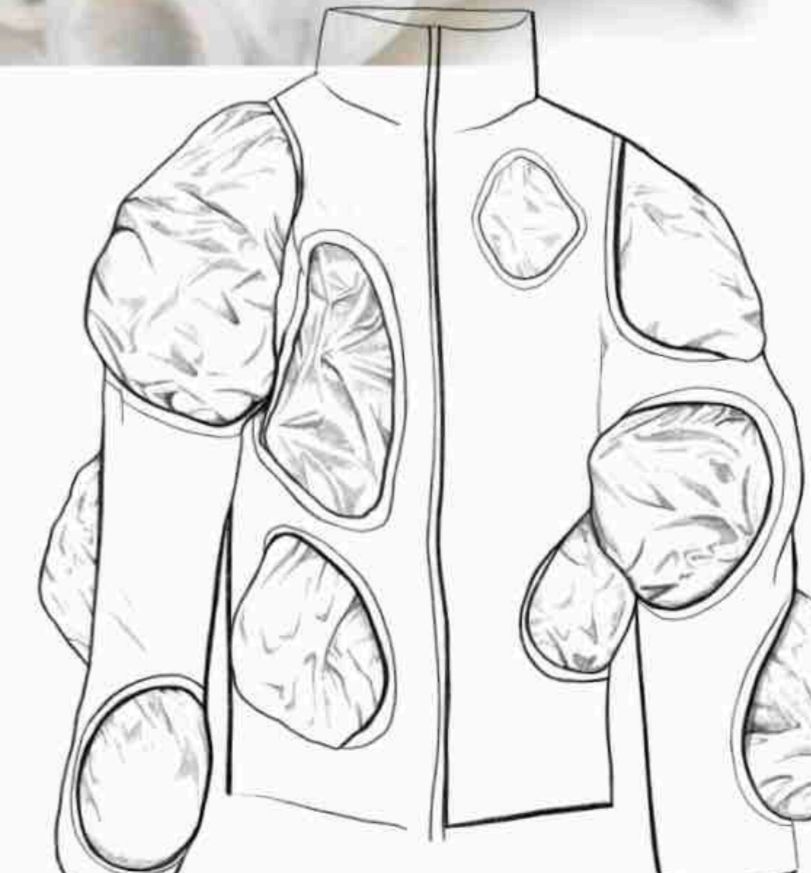
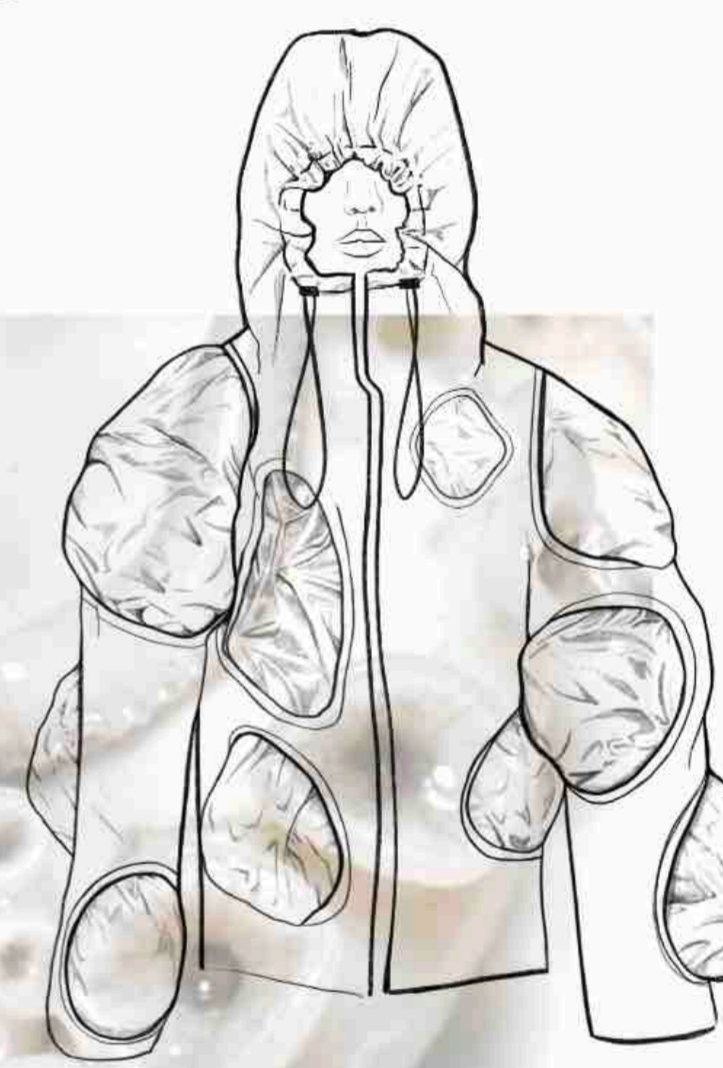
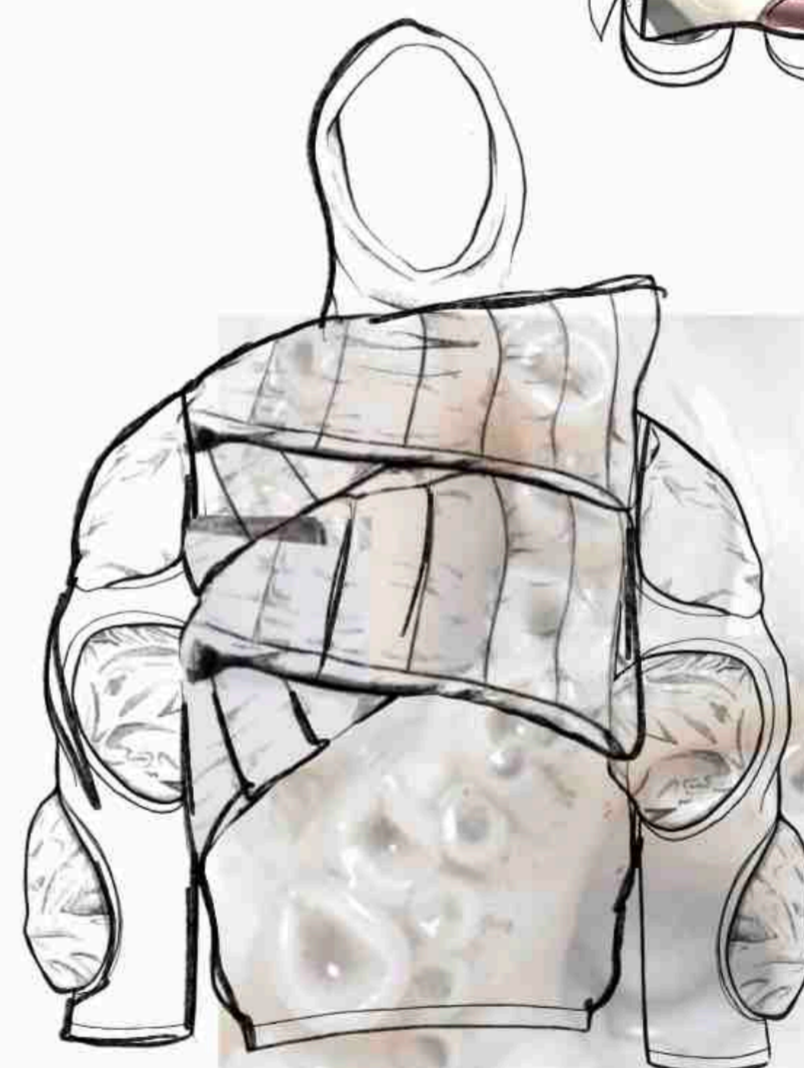
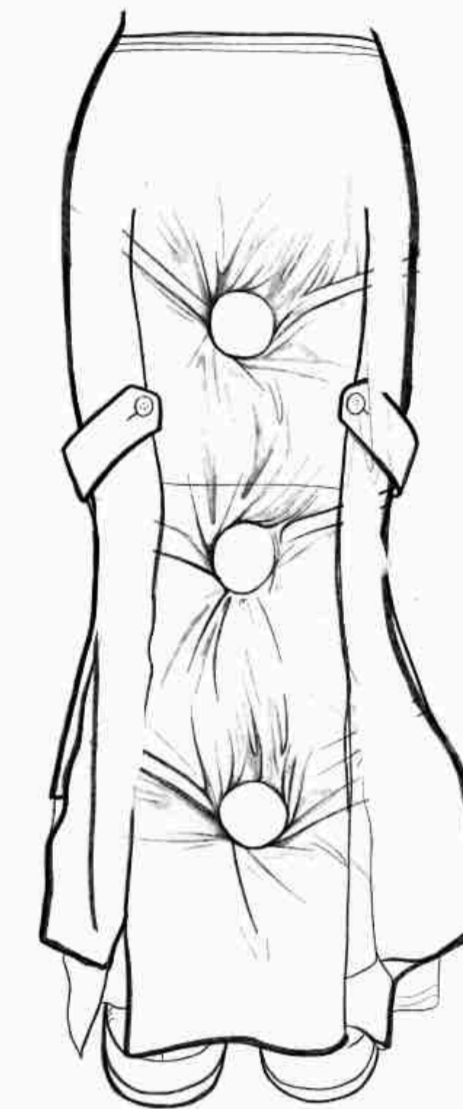




garment research

sample made from leather inspired by garment research.





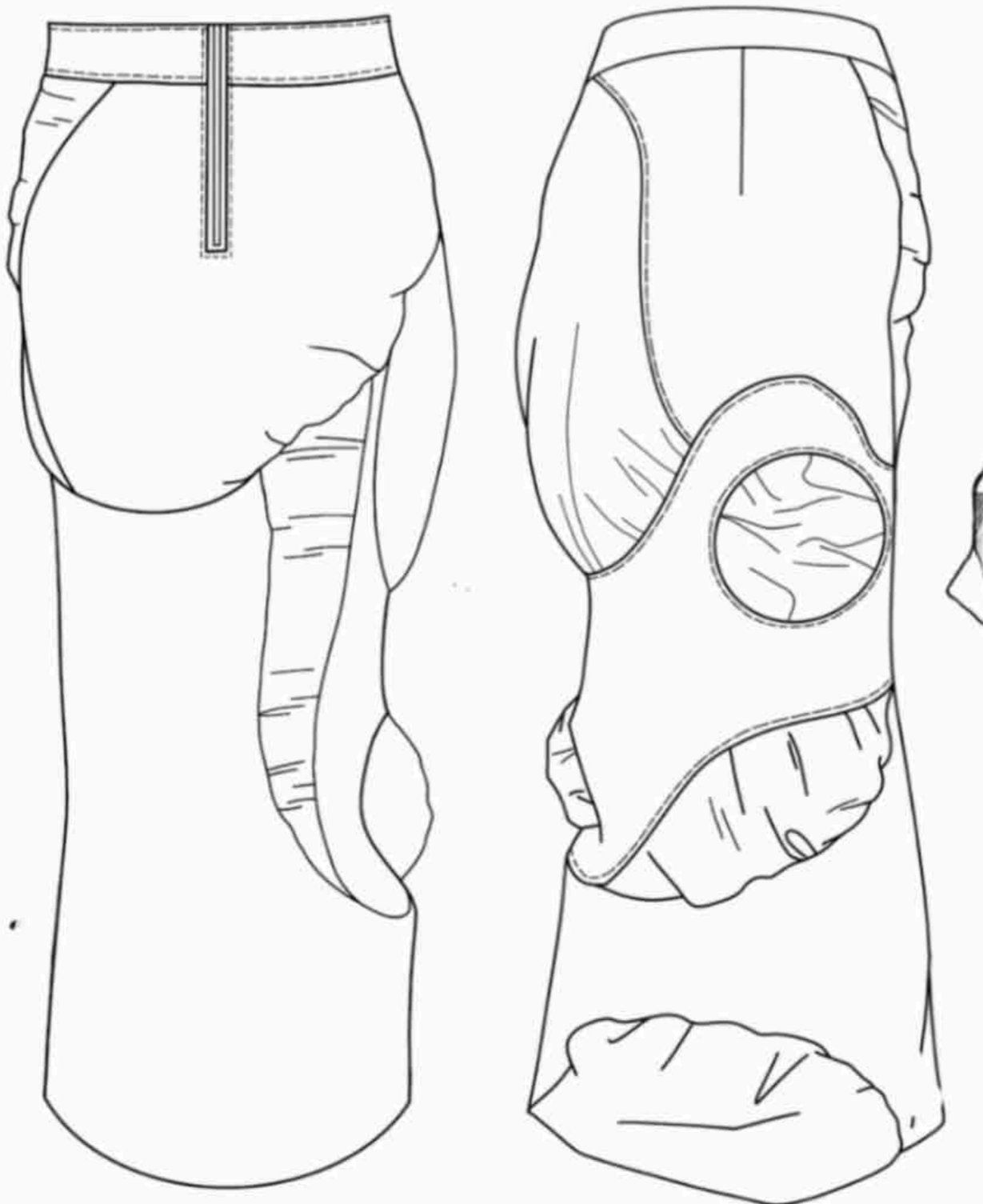
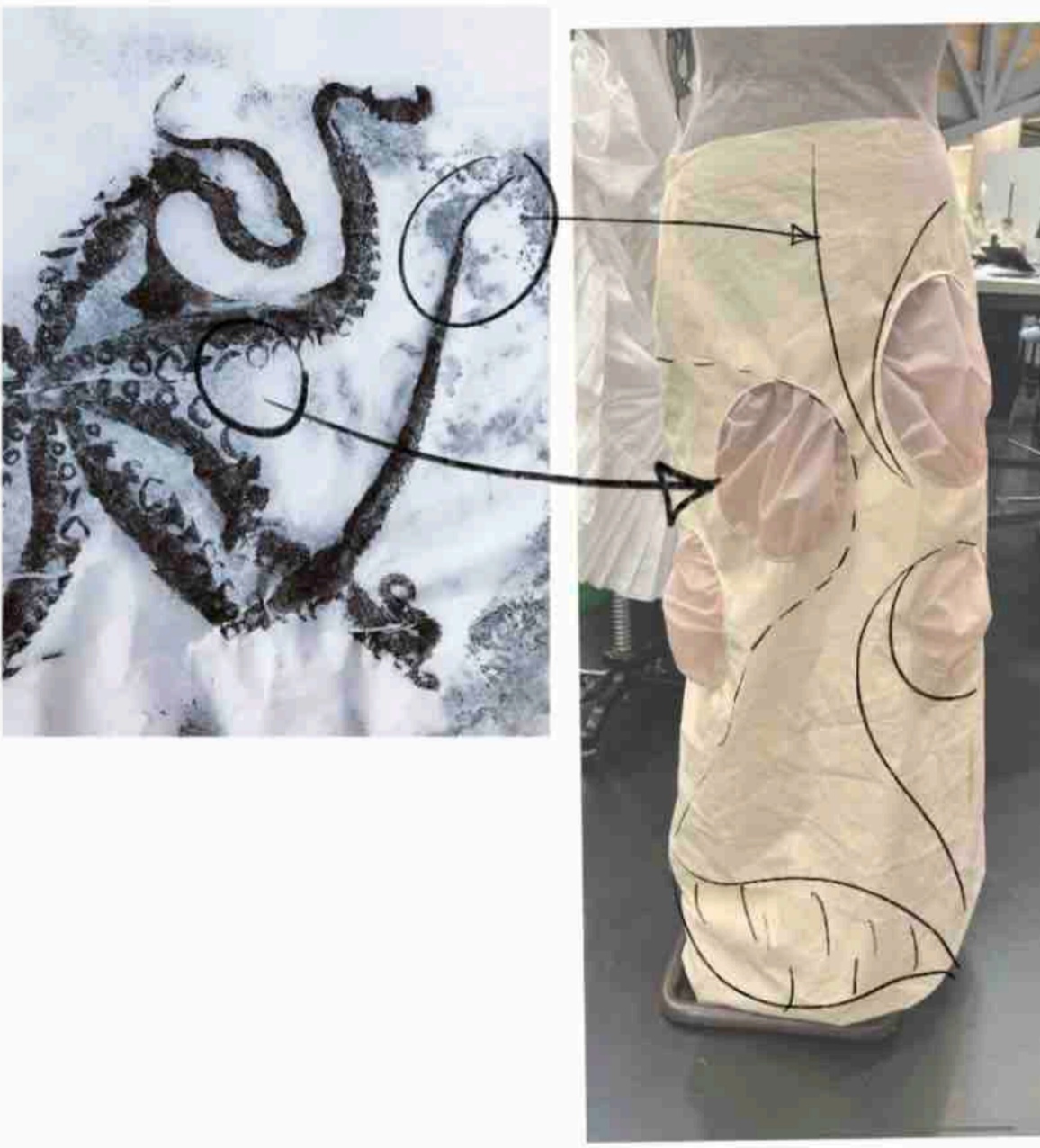
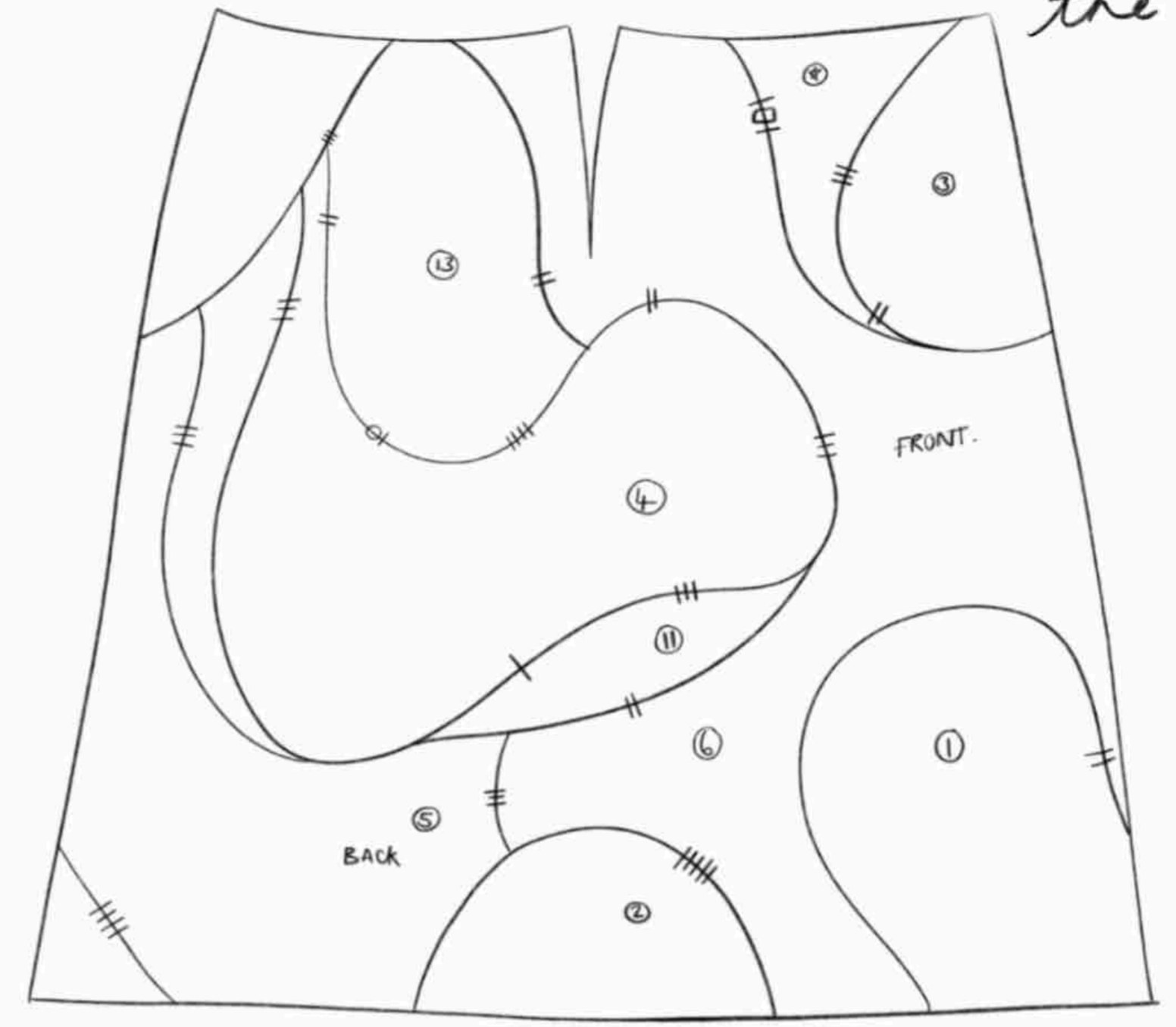
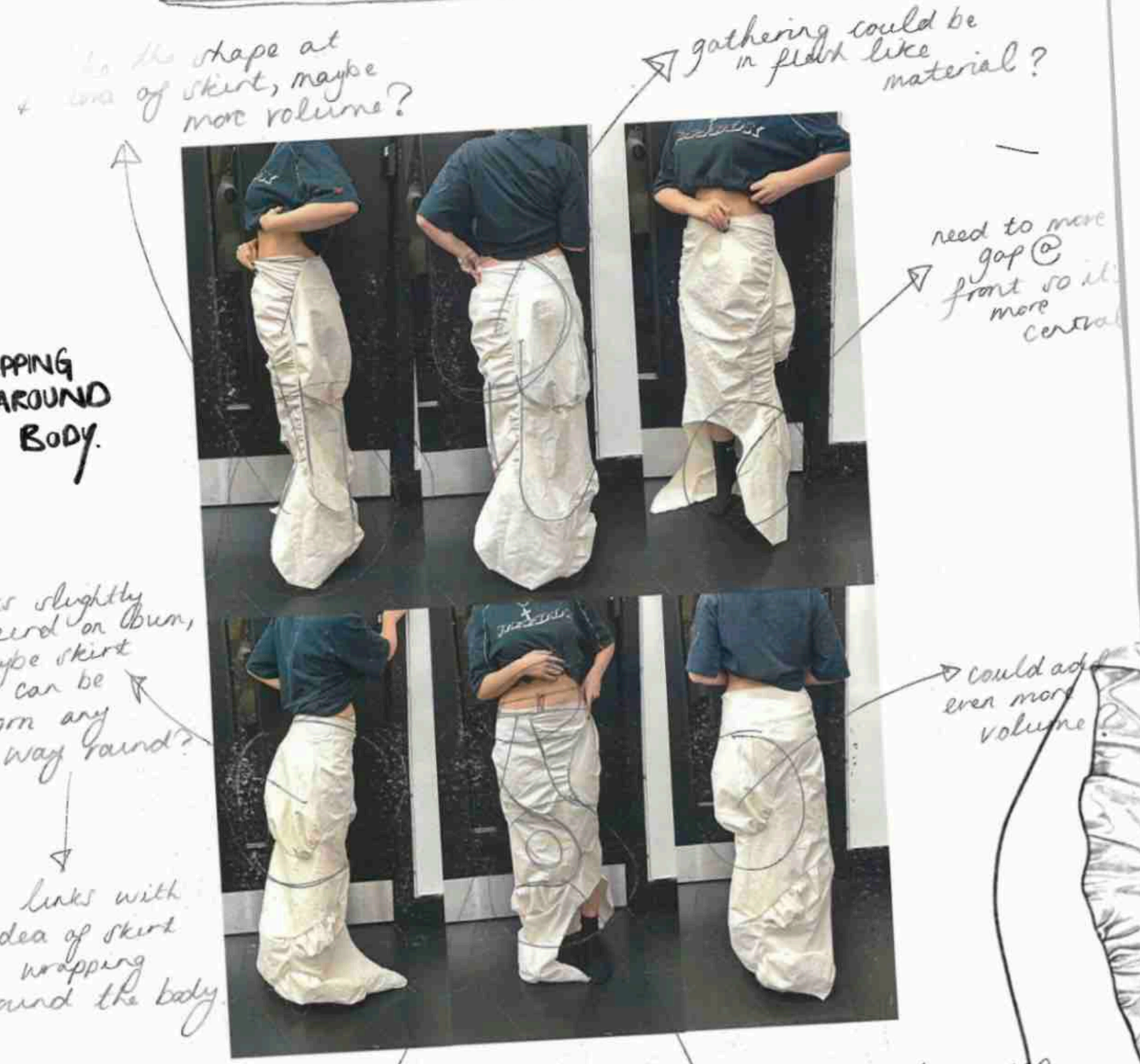
SAMPLE INSPIRED  
By TRYPHOPHOBIA.



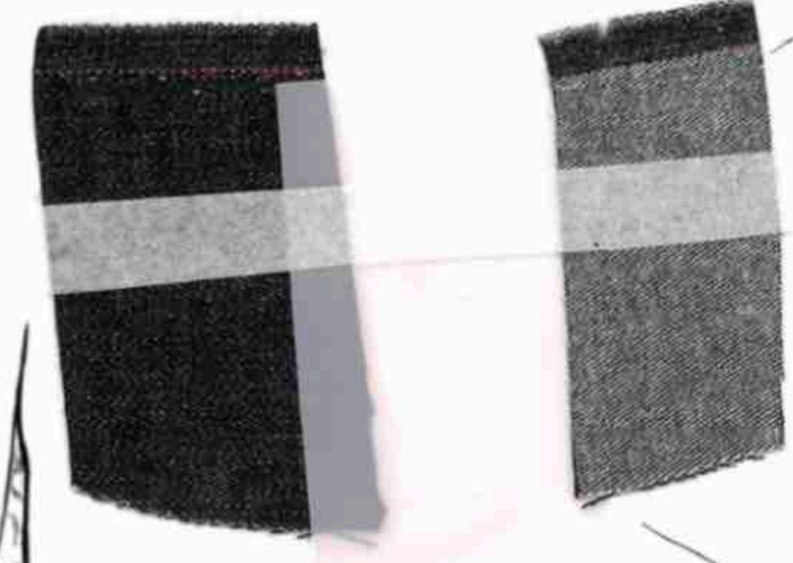
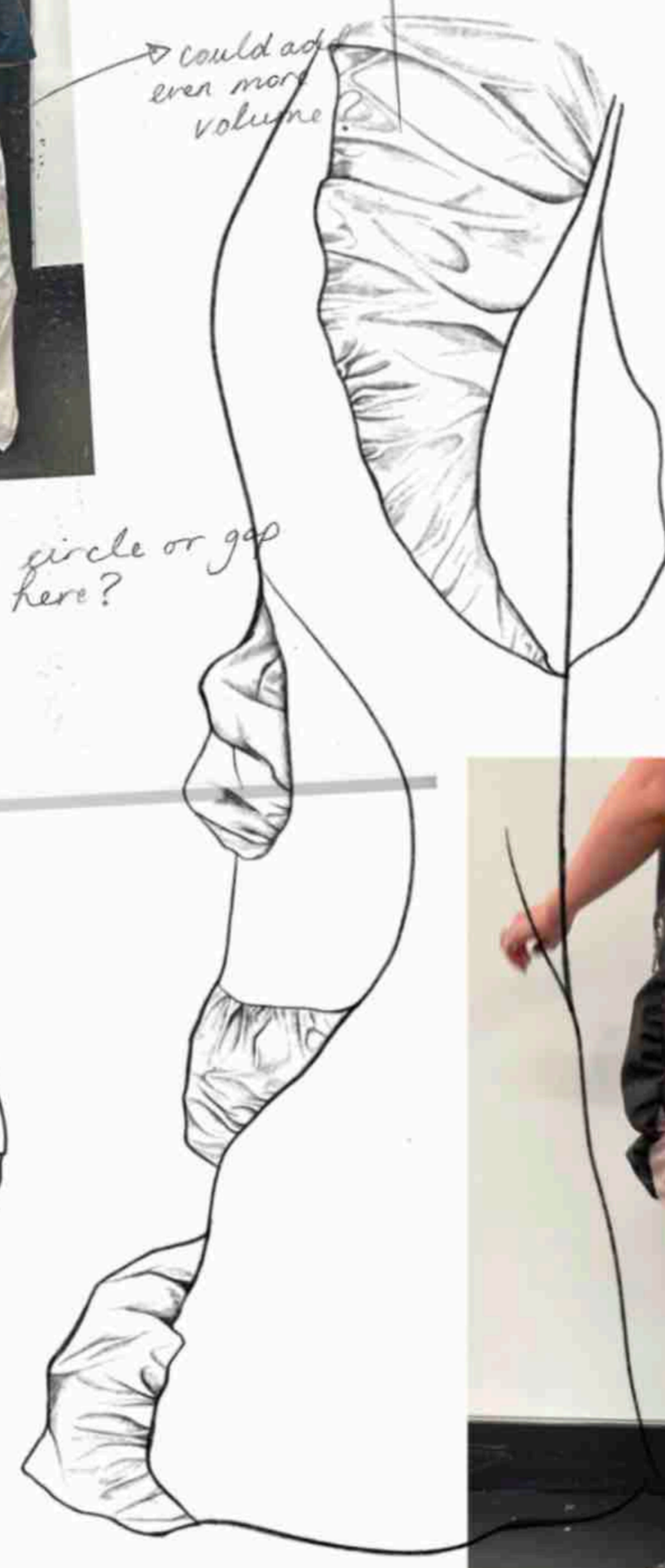
using creative cut to create seams that twist around the body



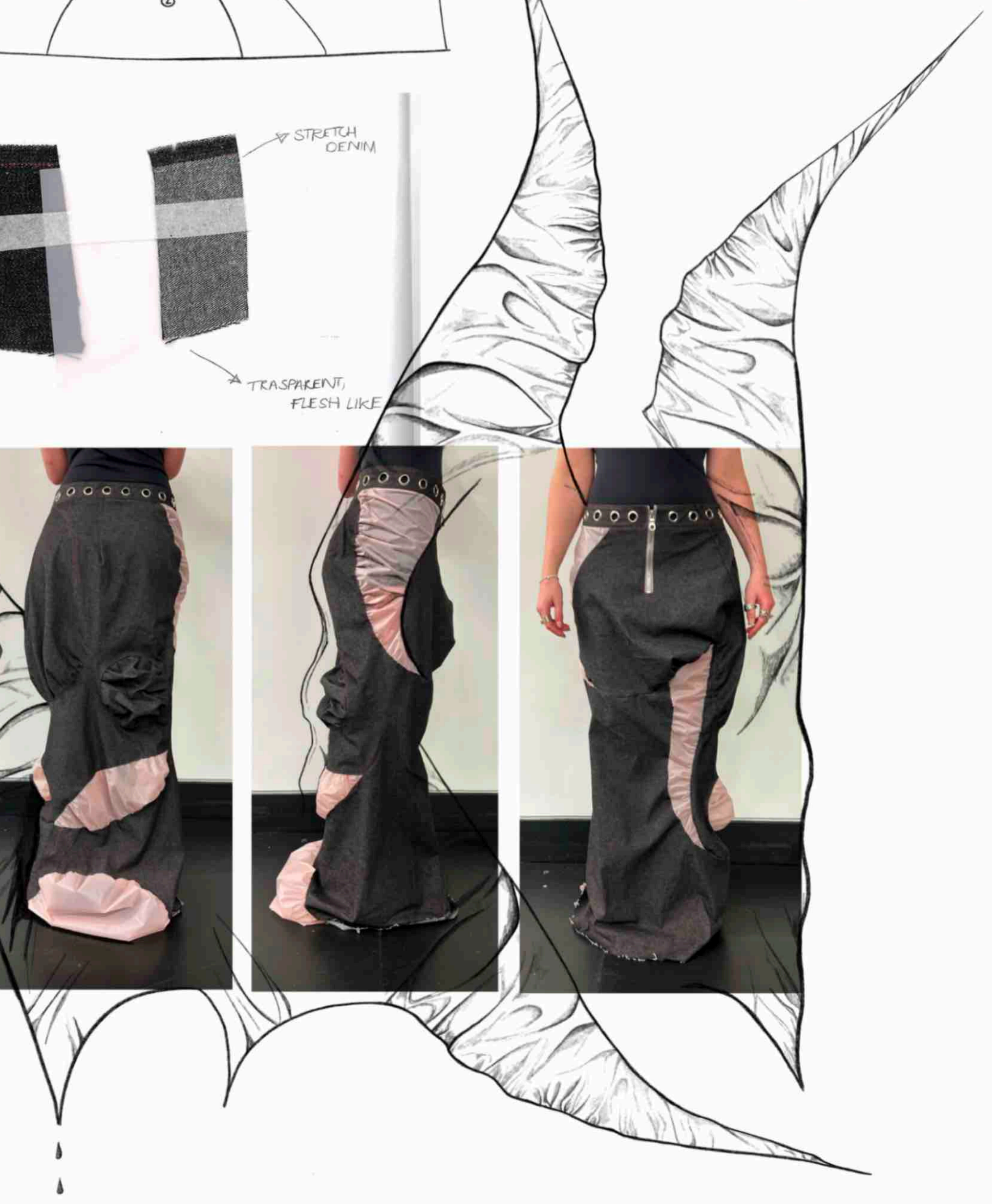
TOILE DEVELOPMENTS

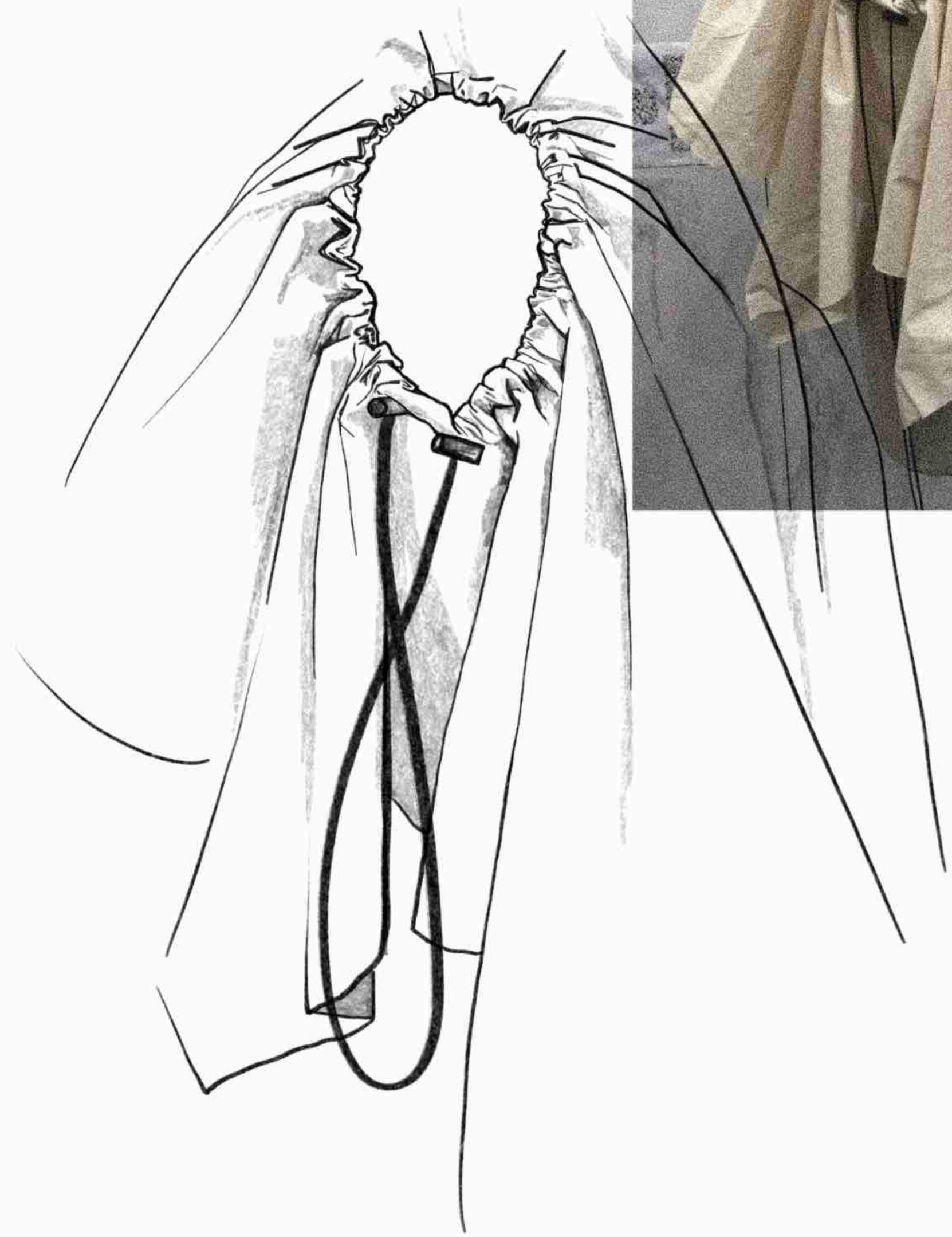


waistband would lock good with some sort of feature? add a circle or gap here?



STRETCH DENIM  
TRANSPARENT, FLESH LIKE





toggles to bring in element of sports wear.

drape work.

like the way the rest of the calico falls down the body.

gathering sat on hip works well



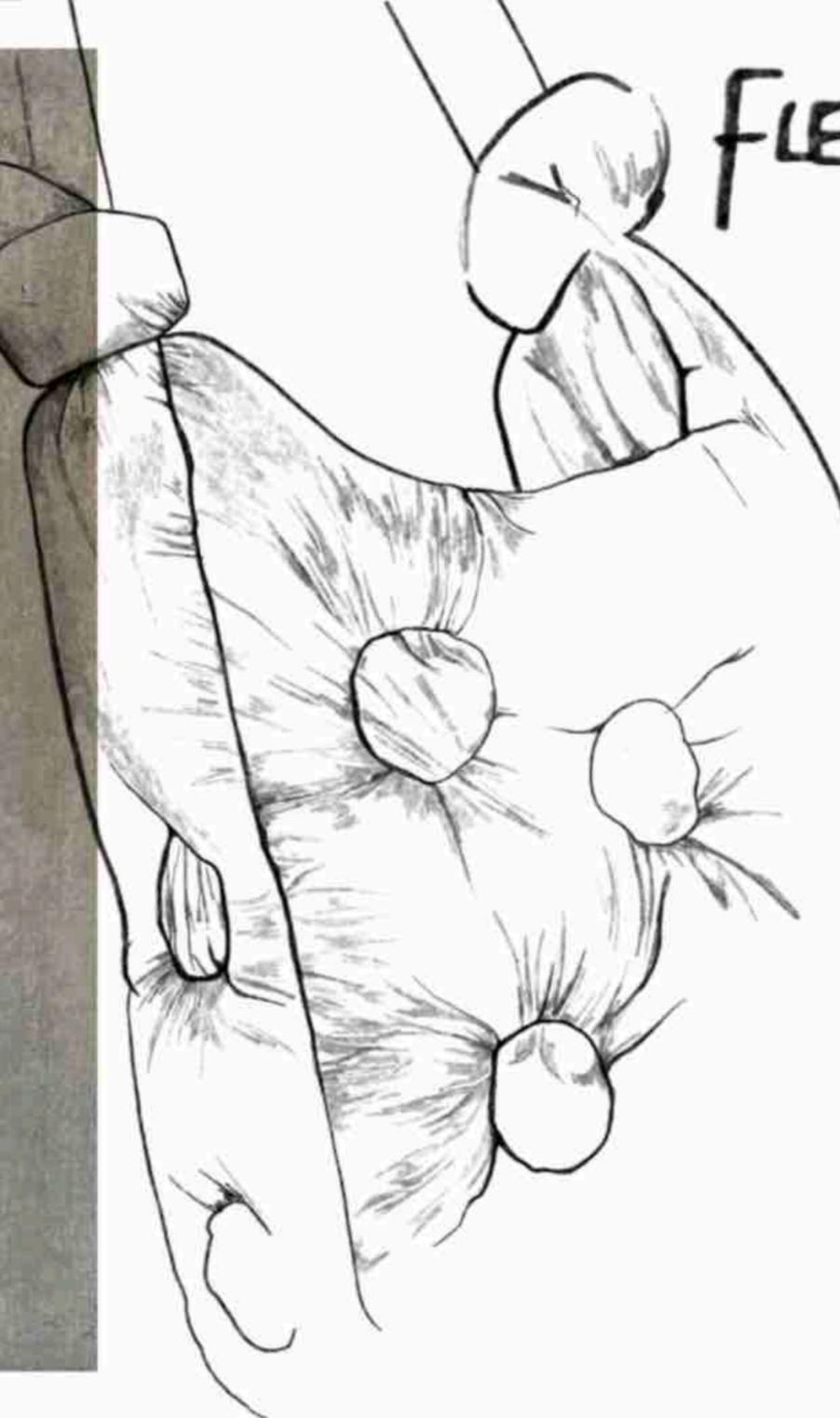
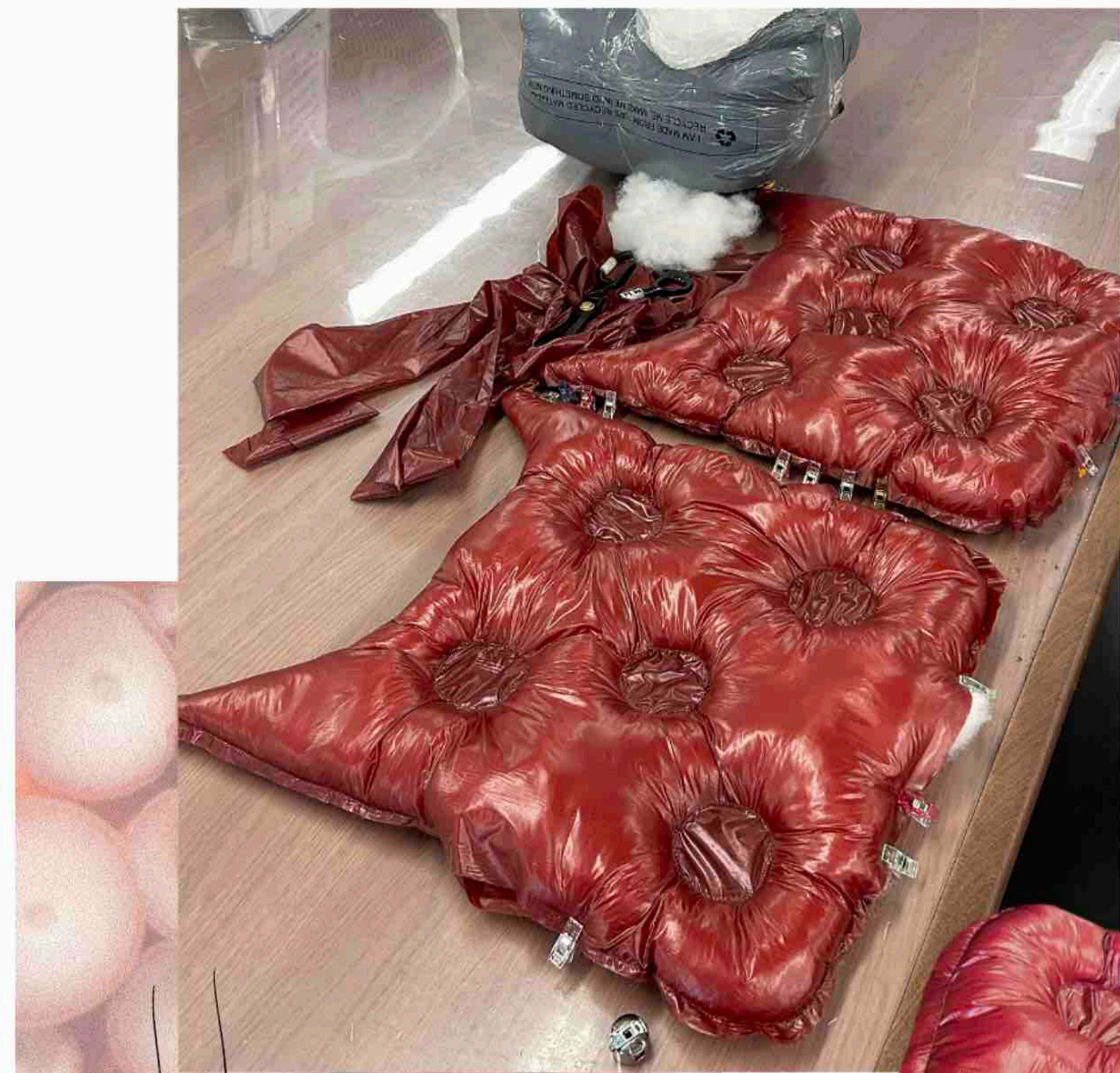
gather runs into hood?

VOLUME?

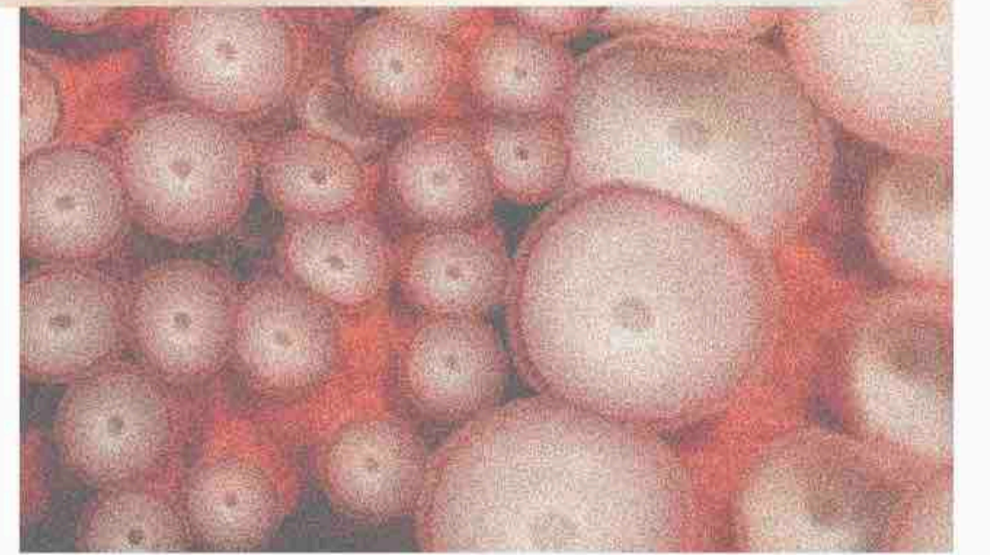
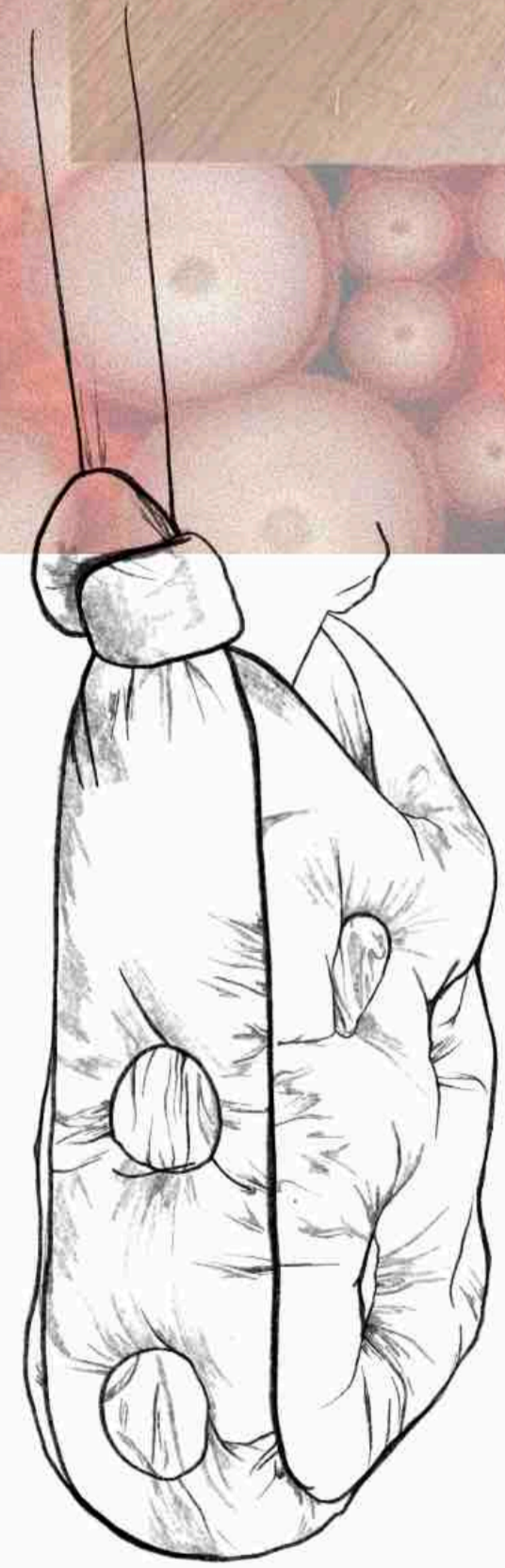
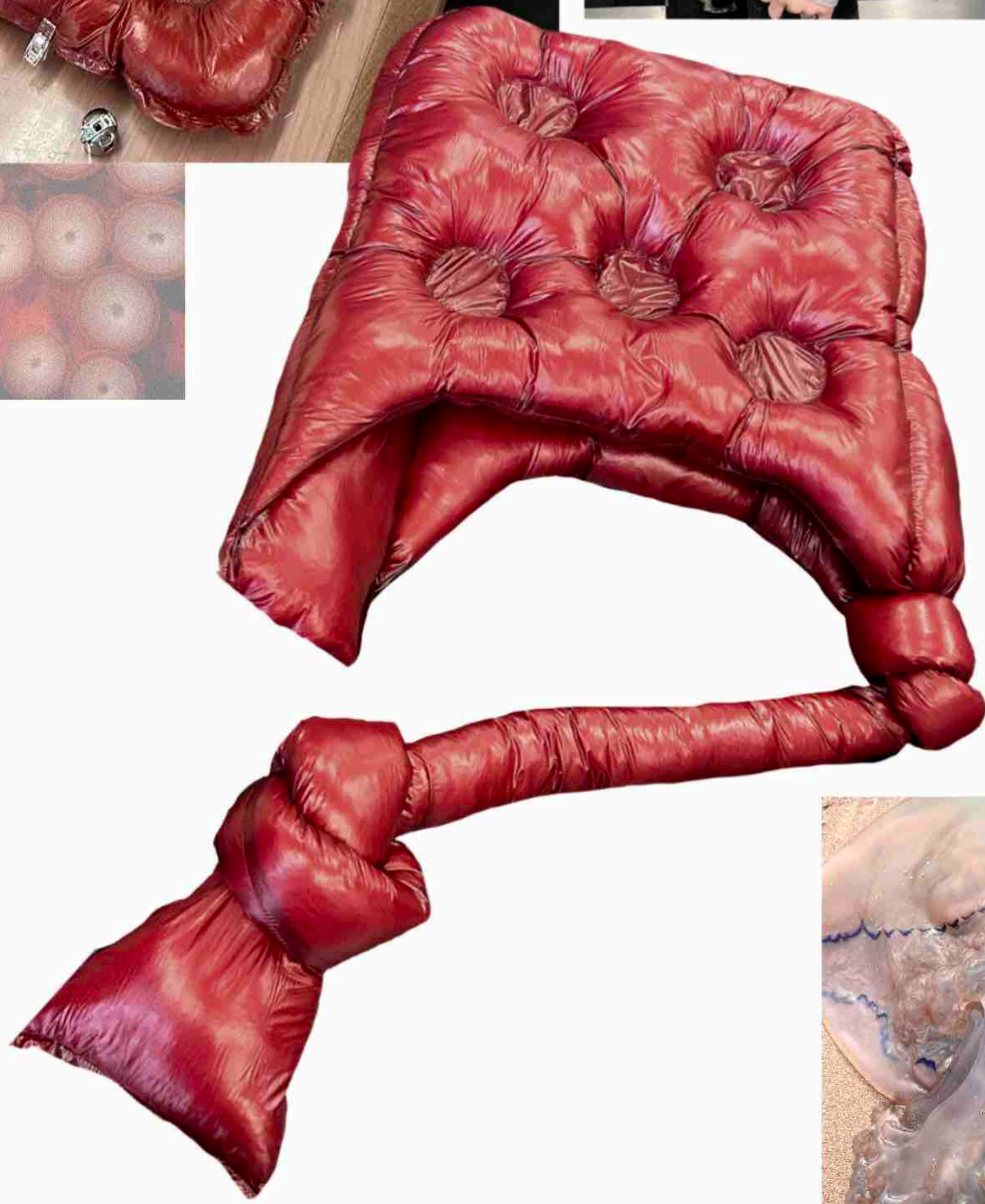
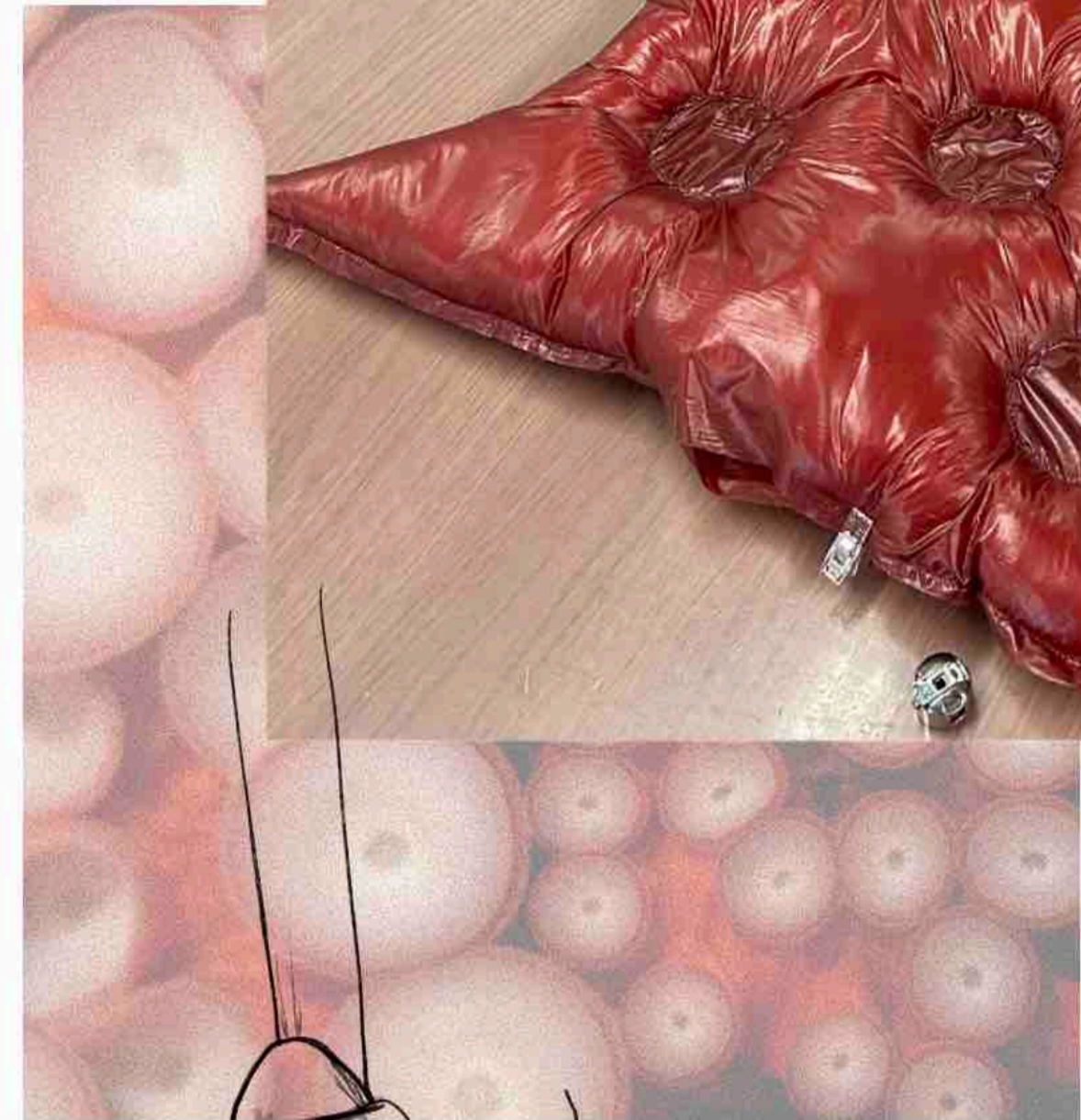
top of back.

could be a lighter dress, multiple gathers so fabric is pulling across body.

idea of reveal and conceal of female figure.

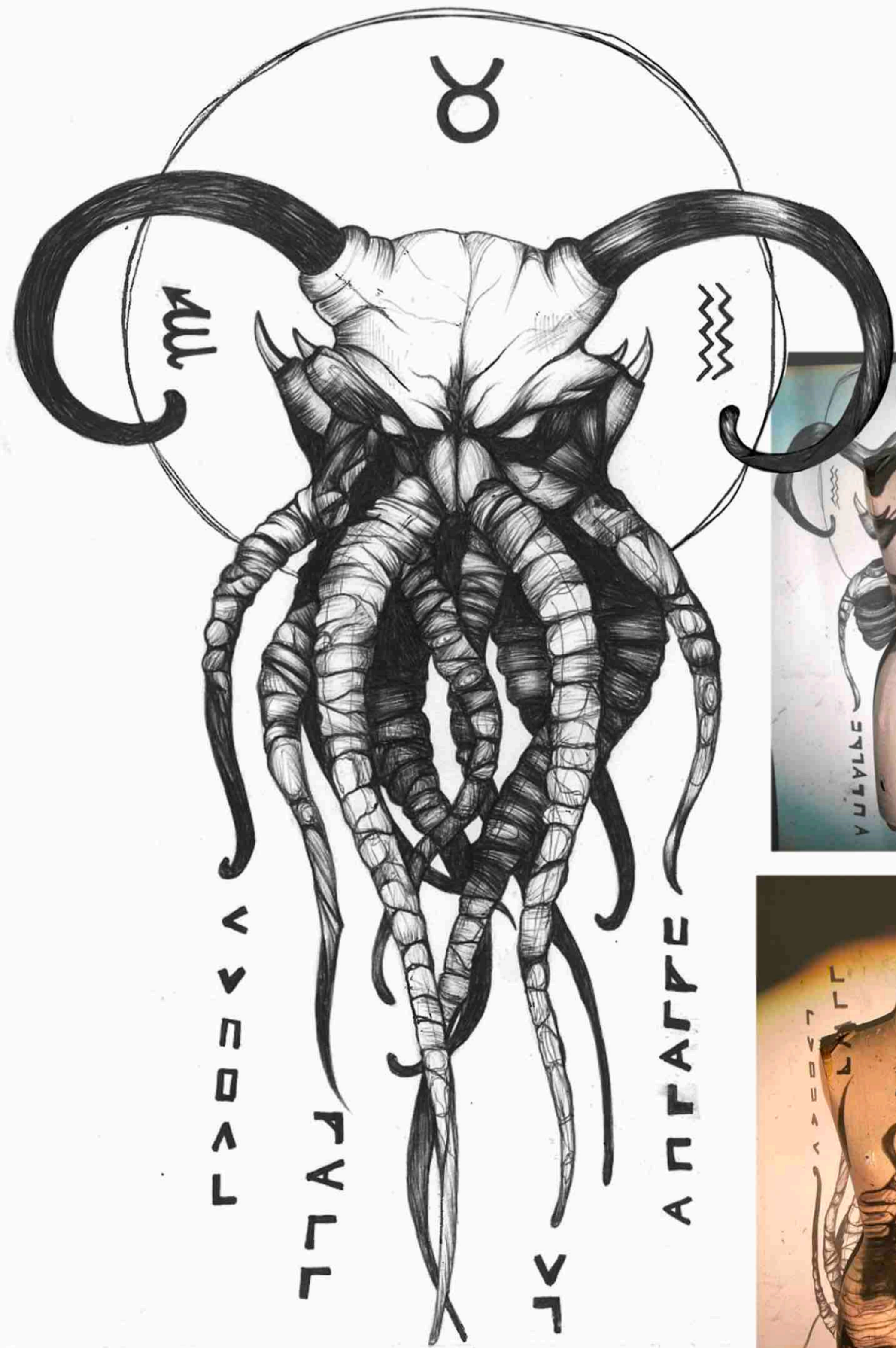


FLESH LIKE LATEX



PRIMARY RESEARCH IMAGE

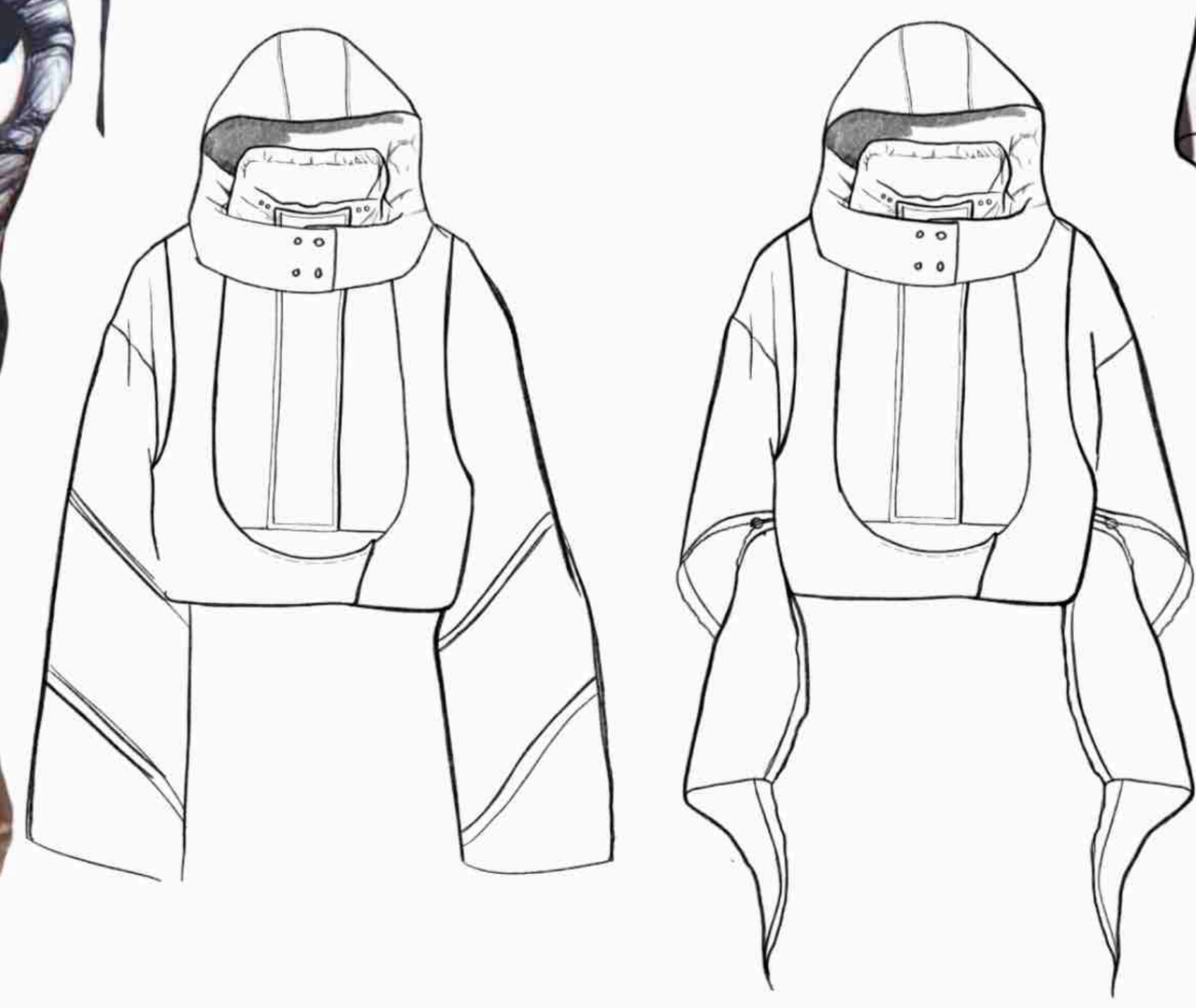
# PRINT - BIRO DRAWING



PROJECTING MY DRAWING ONTO THE BODY.



REVERSE ENGINEERING PATTERN CUTTING.



"WHAT'S IT LIKE TO HAVE TENTACLES THAT ARE SO PACKED WITH NEURONS THAT THEY VIRTUALLY THINK FOR THEMSELVES"

