



HIGH FUNCTIONING GARMENT



HIDDEN ZIP + POPPER PROTECTIVE WEAR

PANELLING CURVED HEM SIZE ADJUSTING CUFF



PANTONE 17-1360 TPG Celosia Orange

detachable sleeves to make motor jacket gilette



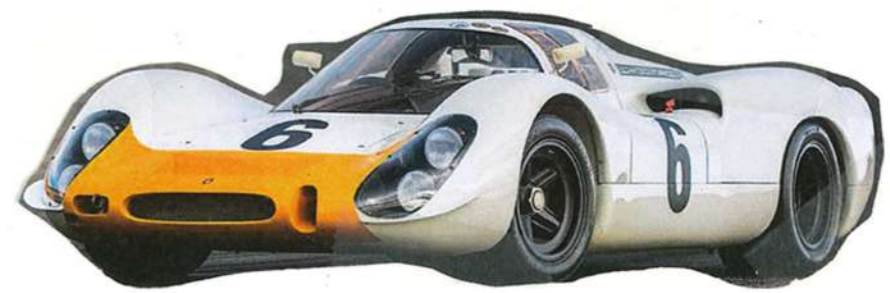
panelling with contrast fmg colours

velcro neck fasten



panels meet at a point on lower back

front detailed pockets + contrast colour for flap with popper + velcro



textures created from car crash  
destructive/smash of metals and  
plastics

Imagery from the day zero  
book, textural images

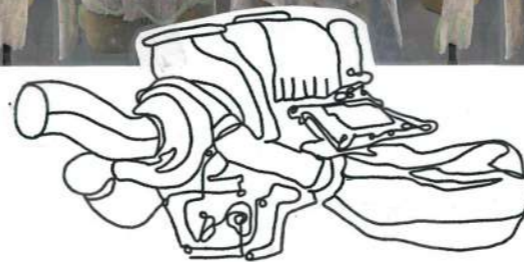


combination of the tape  
and chains wrapped  
around



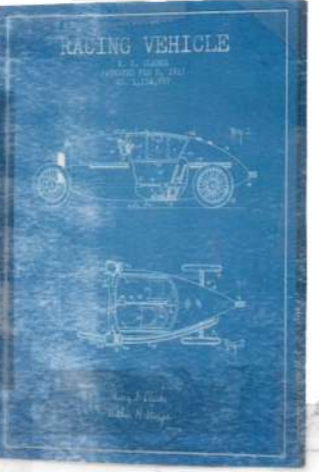
Paint to stretch  
our pleats

screen print or  
digital print

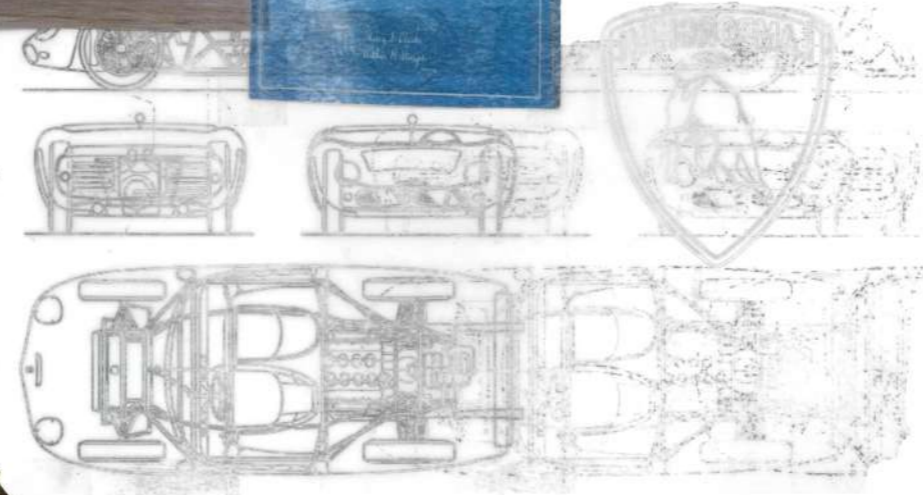


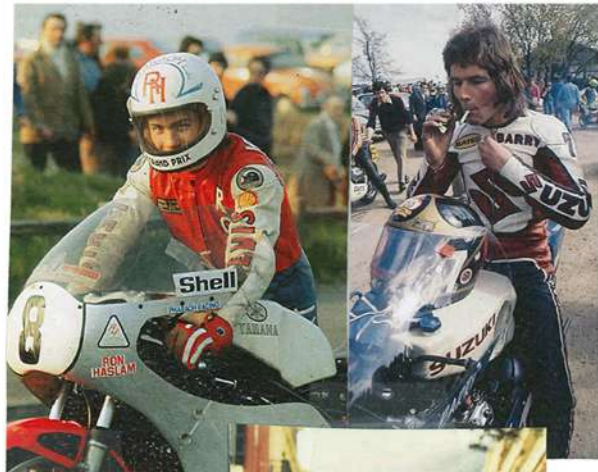
Pleated  
sheer cloth  
↓  
woven into stretch





distressed metal  
rusted + crumpled  
looking at vintage racing  
cars + crashes,  
car destruction +  
damage





generic motorbiker suit fitted + protective body clothing



zip cover + popper



Air Venting

panels for shaping + symmetrical

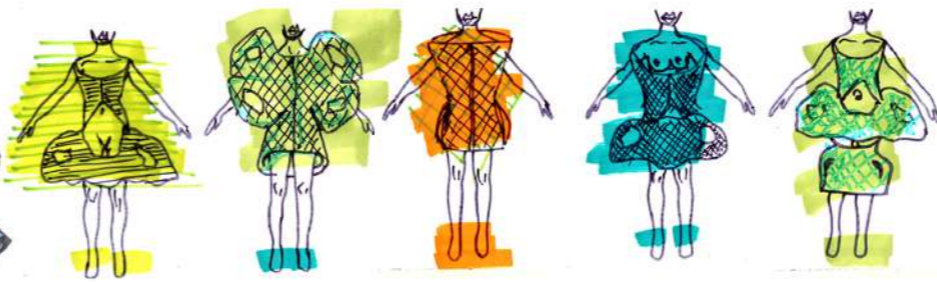
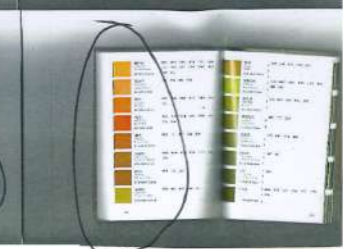
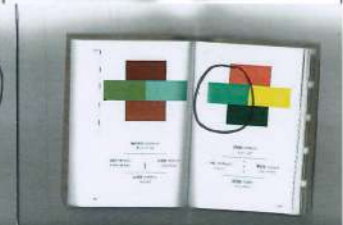
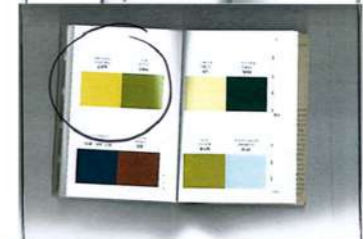
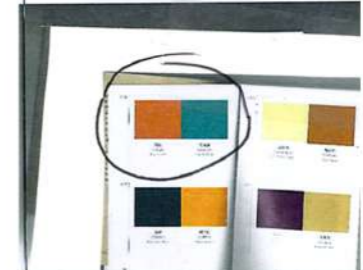
protective knee padding



Thermal layering + protection

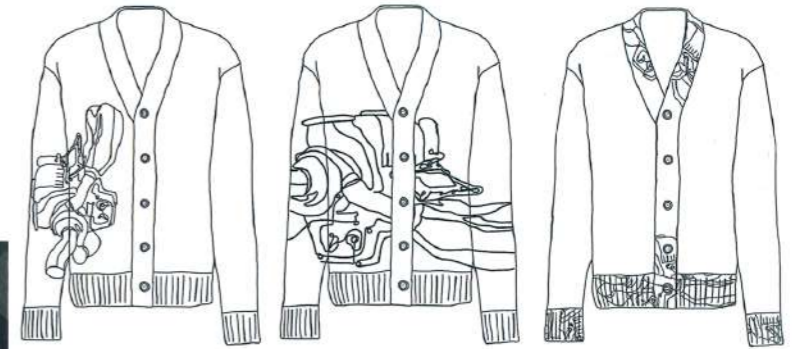


looking at the curved pring in the leather biker jacket

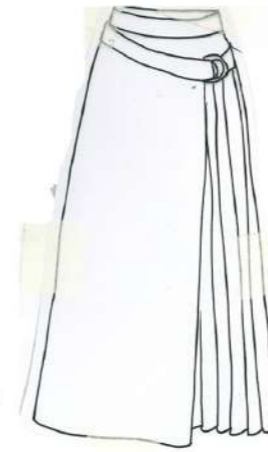


L10A Milk and Honey

X7B Spring Genban R148C



EXPLORING RIBBING + FASTENINGS





EXPLORING INSIDE GARMENT SEAMS + DETAIL



PATCH POCKET SHAPING

FEATURE OF BUTTON STAND



EXPLORING STYLE LINES + POCKETS/FASTENINGS/COLLARS  
 Alternative collars + fastenings for designed coat (Look 1)  
 design for another developed jacket

panelling + contrast shades fabric

straight shape

waterproof nylon

Circular Pocket

rain run off

fitted with tie

tighter + more fabric

side buttons up + gathered

COTTON

WOOL

LEATHER

DIGITALLY PRINTED

HOOK + EYE CLASP

SCREENPRINT ON LEATHER

LEATHER

LEATHER

LEATHER

RIBBED FABRIC

JACQUARD

METAL CLASP

WOOL

POCKET PLACEMENT

WIDEN CUFF

GET RID OF RUNNING FELL SEAM - NOT NEEDED





EXPLORING SEAM LINES + DETAILS

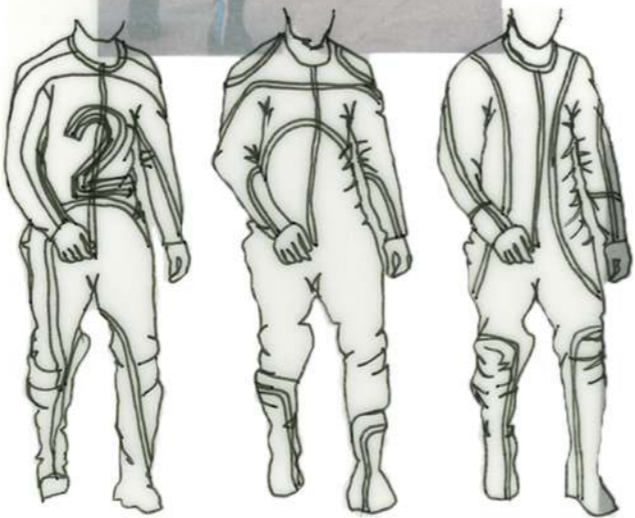


ADD WAISTBAND

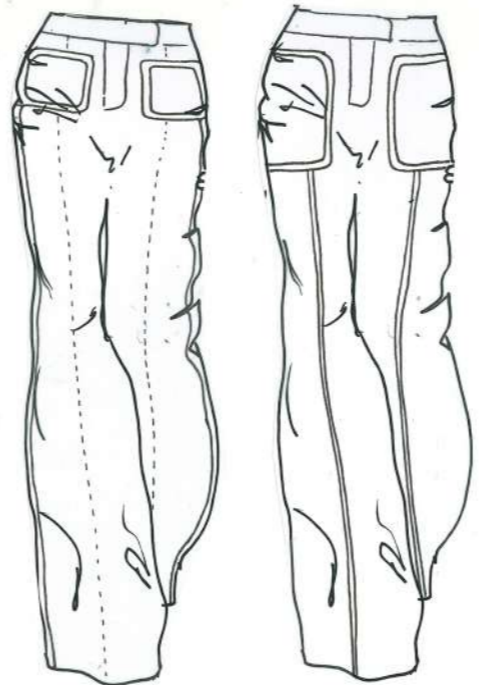
WIDER LEG



Curved Seams  
1 piece suit



REVERSIBLE COAT



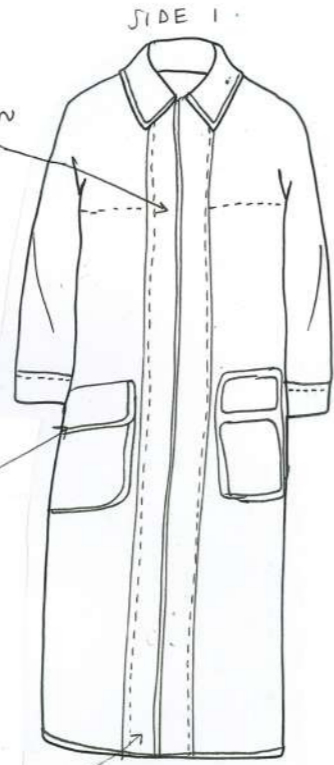
EXPLORING PRINT DIRECTION FOR QUILTING



SIDE 1



HIDDEN BUTTON STAND



MAGNETIC CLASP

SEATBELT WEBBING

JET BELT WEBBING

PATCH POCKET

HIDDEN BUTTON FASTENING



SIDE 2



RIGHT SIDE POCKET

MOVE TO SIDE SEAM FURTHER FROM ZIP

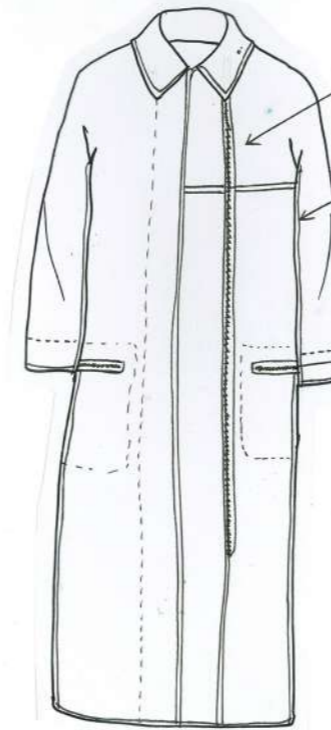
ZIP BE JET POCKET INTO PATCH POCKET BAG

ZIP FASTENING



SEATBELT WEBBING TO HIDE BUTTONS + BUTTON STAND

SIDE 2



ASYMMETRIC ZIP

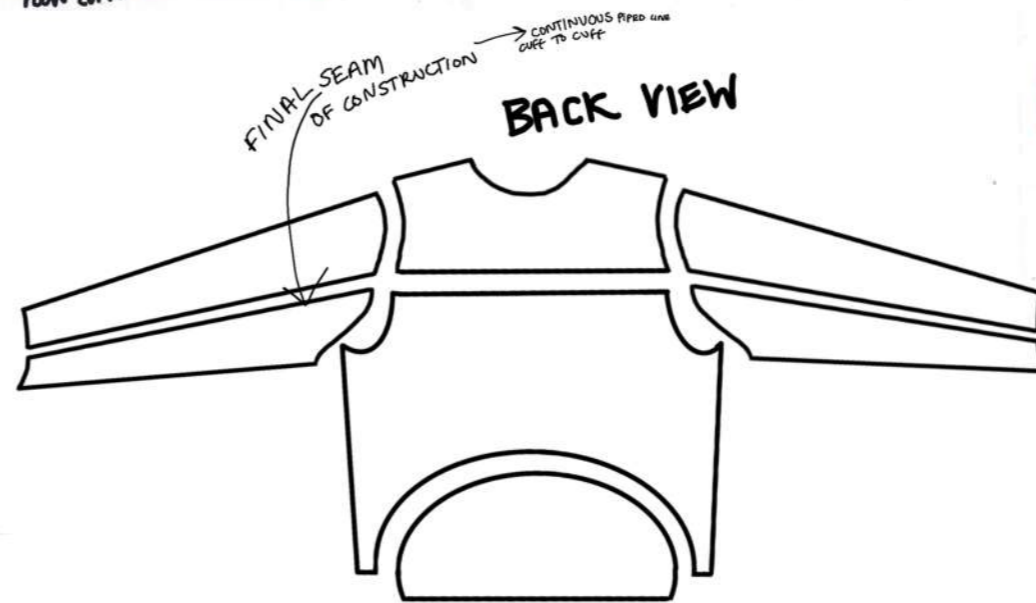
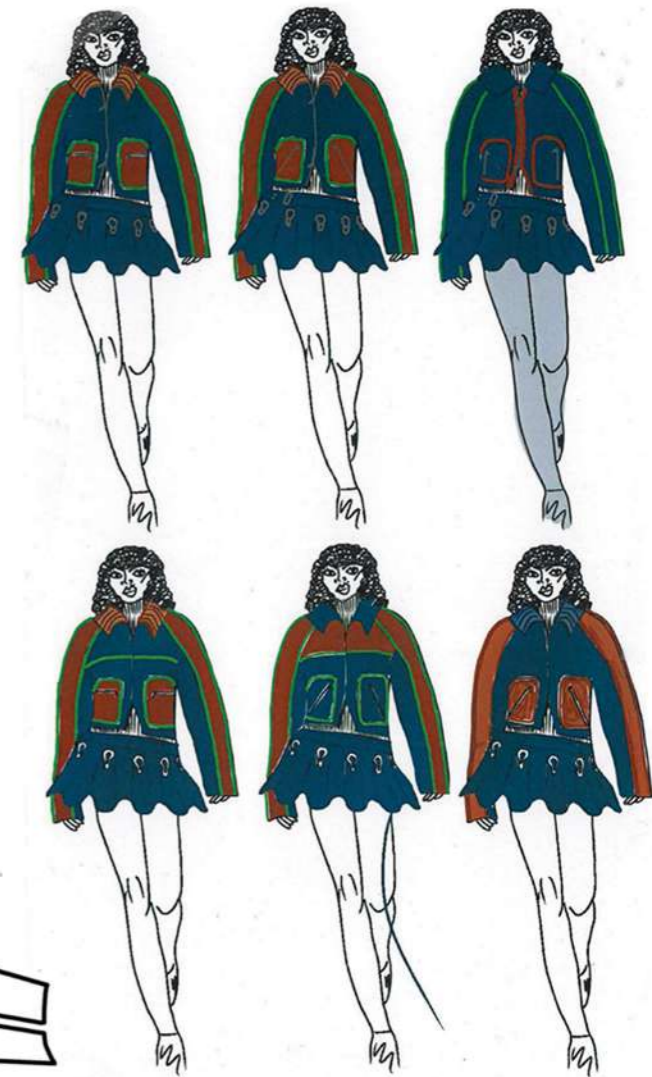
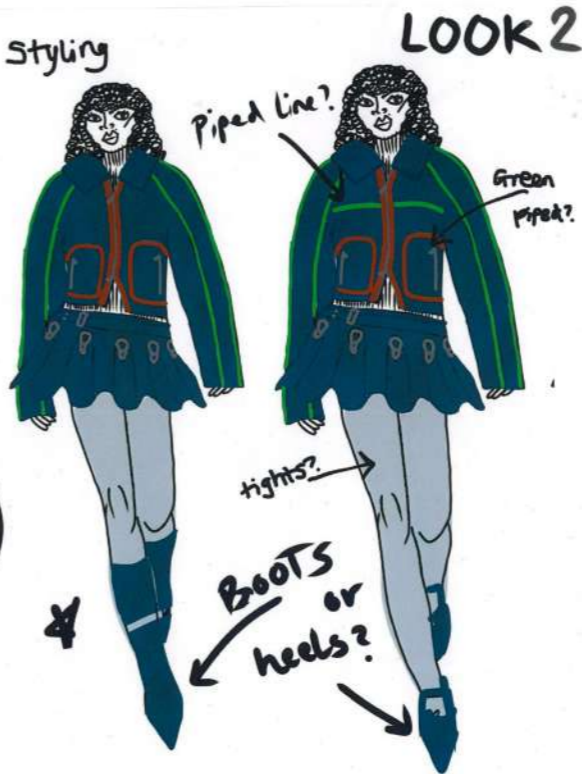
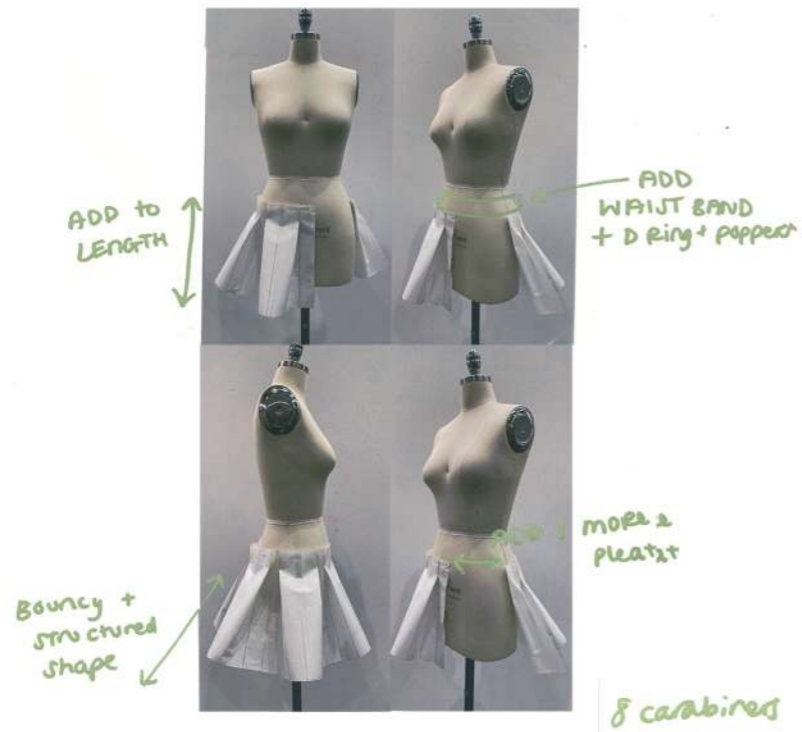
BOUNDED SEAMS

JET ZIP POCKET INTO POCKET BAG



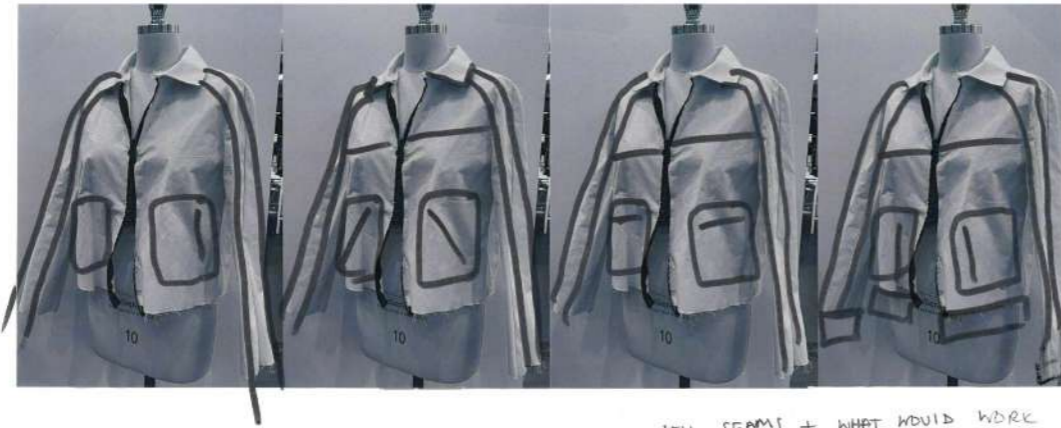
Look 1





WASNT SURE ON ORIGINAL DESIGN SO CHANGED IT

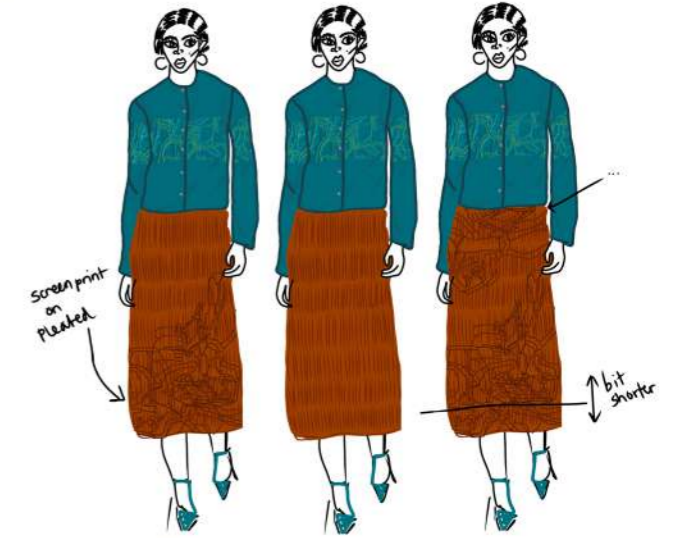
# EXPLORING SEAM + PIPING LINES



EXPERIMENTING WITH SEAMS + WHAT WOULD WORK BEST FOR THICK LEATHER  
- ALL RAW EDGE SEAMS

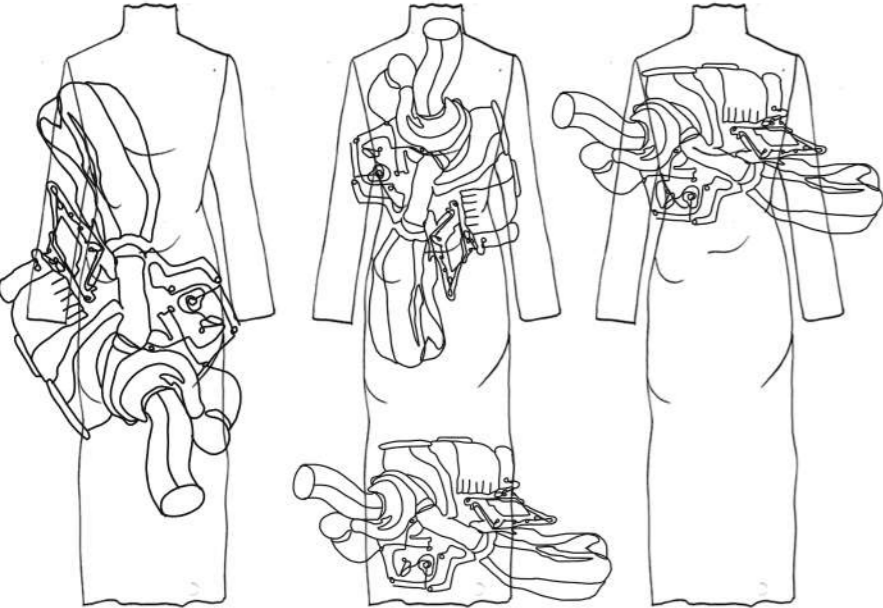


Look 2



Look 3

Formula 1 Race car engine



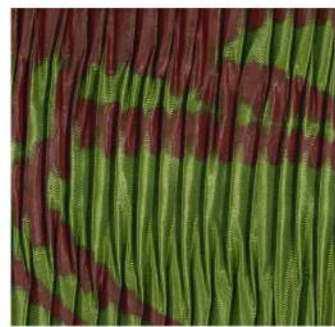
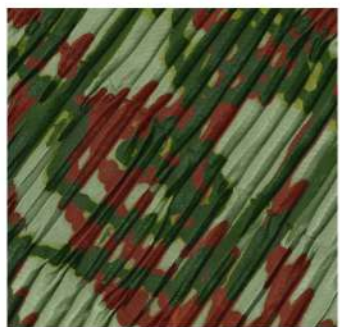
ADDED 24 FOR FASTENING DIFFERENT COLLAR



PIPED LEATHER

DECIDING JEAN PLACEMENT

VENT ADDED FOR WALKING (LONG SHAPED)



Look 4

