



A BOHEMIAN STORM
IS BREWING

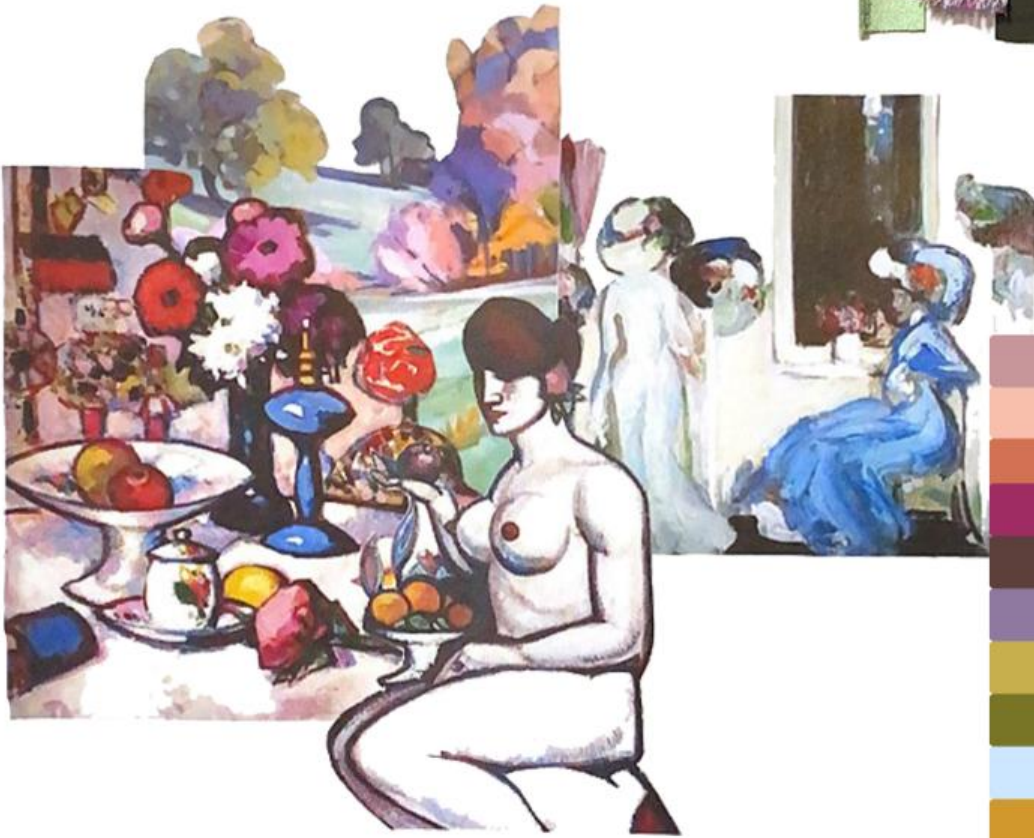




THIS COLLECTION FOCUSES ON THE DARK UNDERBELLY OF 19TH CENTURY BOHEMIAN PARIS AND THE PROMISCUOUS WORLD OF THE MONTMARTRE. THIS CONCEPT HAS PAVED THE WAY FOR ME TO LOOK INTO MANY FORMS OF SUBVERSION TAKING PLACE DURING THIS TIME. OPIUM DENS, BROTHELS, ABSINTHE, CREEPY PUPPETS AND THE UNCONVENTIONAL BOHEMIAN LIFESTYLE HAVE ALL INSPIRED MY WORK. COLOUR PALETTE HAS BEEN EXTRACTED FROM SOME OF MY FAVOURITE SCOTTISH COLOURISTS' PAINTINGS.



COLOUR PALETTE AND
FABRIC SWATCHES



Scottish colorist's paintings



Absurthe
hallucinations

Parisian
brothels

KAREN SUZUKI
TEXTILE ANIMALS

THE DARK UNDERBELLY OF BOHEMIAN PARIS



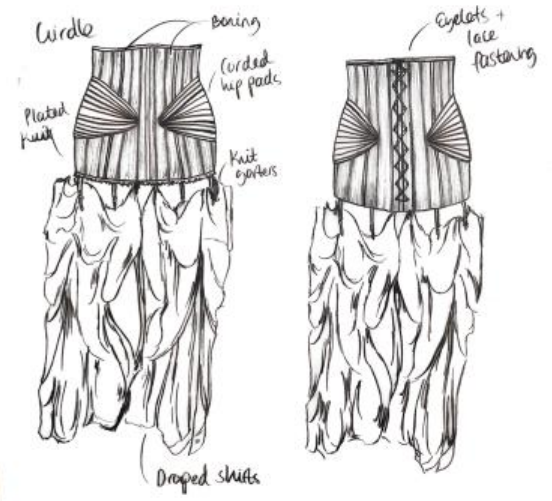
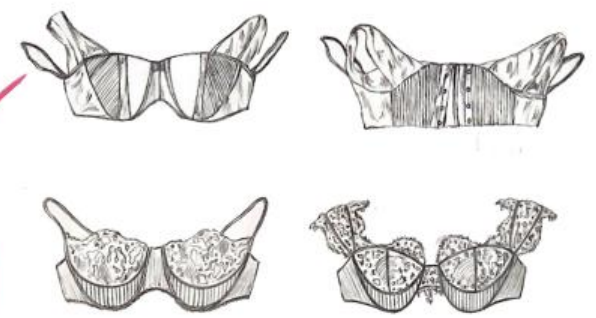
Parisian Puppets



DOMESTIC AND DUBIED KNIT SAMPLES



CREATING LINGEIE PIECES WITH PLATED KNIT ELEMENTS

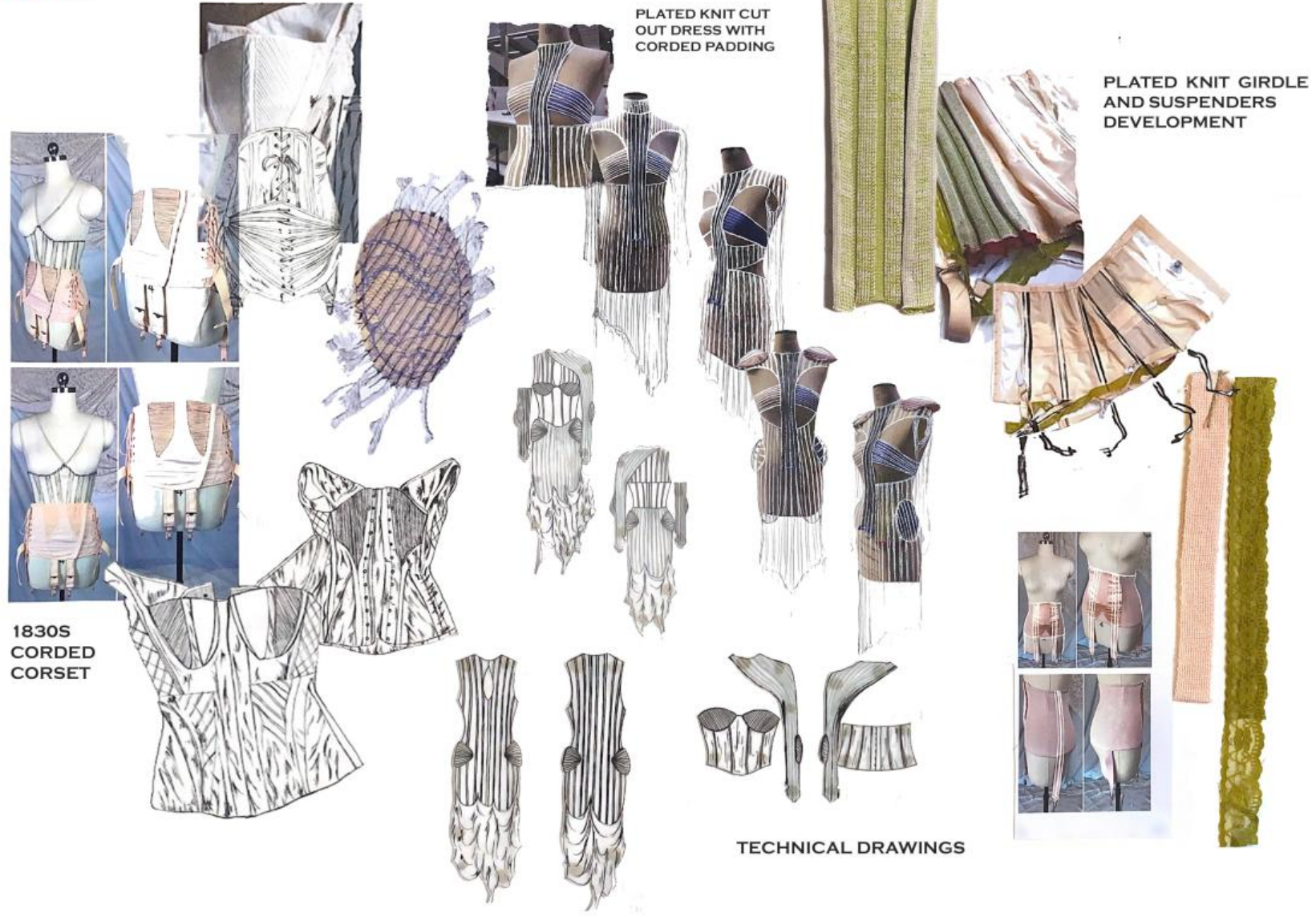


PLATED KNIT GIRDLE WITH DRAPED FABRIC

STAND WORK DEVELOPMENT



DEVELOPING CORSETRY
ELEMENTS



PLATED KNIT CUT
OUT DRESS WITH
CORDED PADDING

PLATED KNIT GIRDLE
AND SUSPENSERS
DEVELOPMENT

1830S
CORDED
CORSET

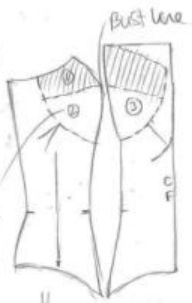
TECHNICAL DRAWINGS

LOOK 1 DEVELOPMENT



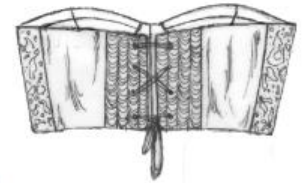
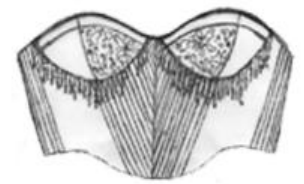
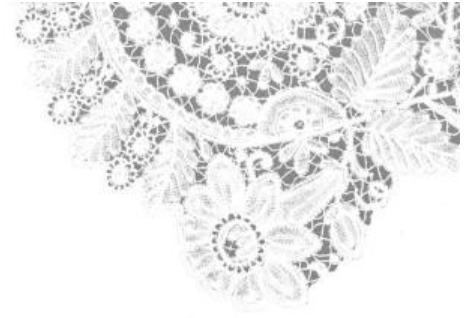
Create more bust on corset.

More curve on cup for volume.



Cut on bias

Add back panel for eyelets.



Finished Result



INCORPORATING RUCHING AND BUSTLES INTO COAT



SATIN 19TH CENTURY INSPIRED COAT



FINAL OUTFIT



LOOK 3 DEVELOPMENT



Adjusted Knitted Shrug



SIDE VIEW



Roll hoops + button fastening

Asymmetric SKIA

Roll hoops button fastening

Edge binding knit strip



Ruffled Bustles attached to side + back only

KNIT SWATCHES



Attach more in between gaps



Contrasting binding strip

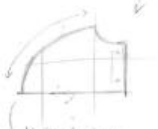


Different sizes of rib of knit skirt

Make bustles asymmetric?

BACK VIEW





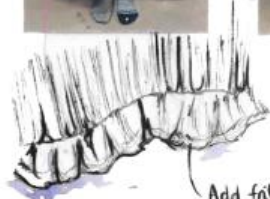
Killed sting
Scalloped on skirt hem



Striped
Knit



Add fill on
skirt hem



Furry leg warmers





Make sleeve bigger at wrist

Ruffled satin bustles



DRAPED SATIN JACKET



Oversized satin sleeves



INCORPORATING TASSELS AND BEADING TO VELVET BODYSUIT



FINAL COLLECTION LINE UP

