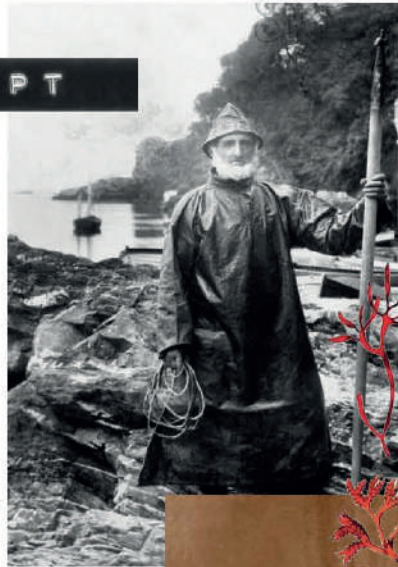


*Workwear details*

INTRO TO CONCEPT



*Shadows and geometry*

*Newhaven fishwives*





*Vintage seaweed prints*

INTRO TO CONCEPT

*red stripes*

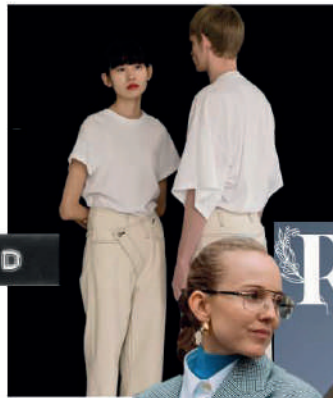
*Trim finishing details*







CONSUMER BOARD



Revive  
A SUSTAINABLE FASHION AND BEAUTY MAGAZINE

Non-gendered clothing



ETHICAL,  
NATURAL,  
UPCYCLE.



global garbs  
A SUSTAINABLE FASHION MAGAZINE

Different options for different events



Busy lifestyle with different occasions throughout the day



Hint of tailoring with workwear streetwear influence





DEVELOPING EMBROIDERY DETAIL

*Coral bring luck, vitality and good energy.*

*Looking at 2 prints from 1901 of coral seaweed*



*Bamboo thread was used in the embroidery process to avoid synthetic materials*



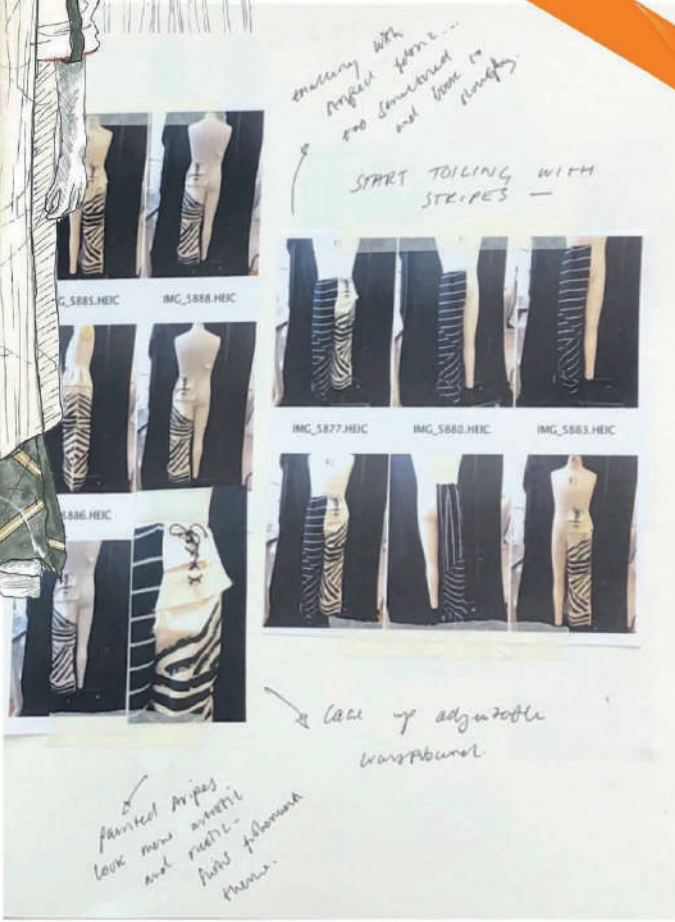
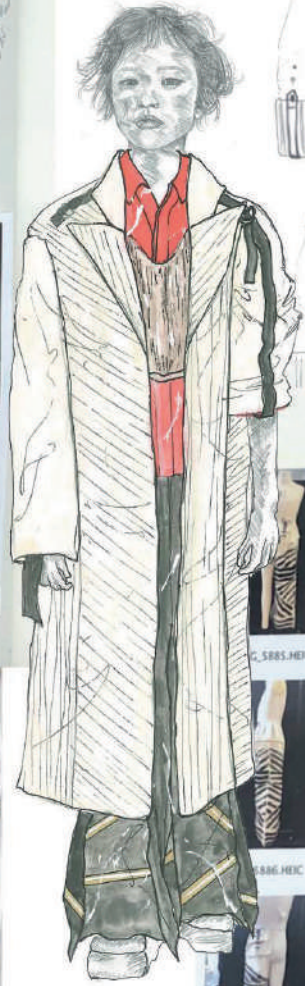
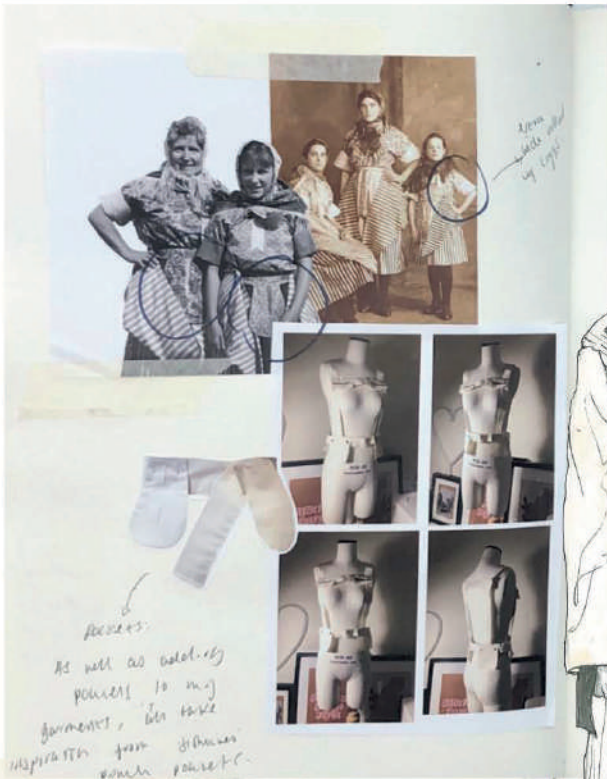
*Making silhouette pattern on simple maquette*

*Just for quick trial*

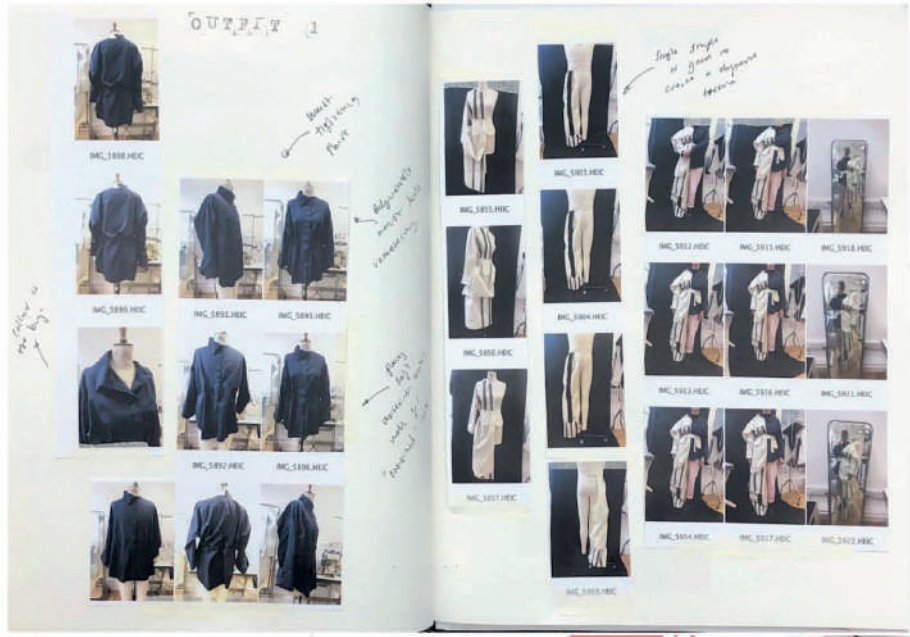
*Using paper maquette*

*Paper maquettes for placement*

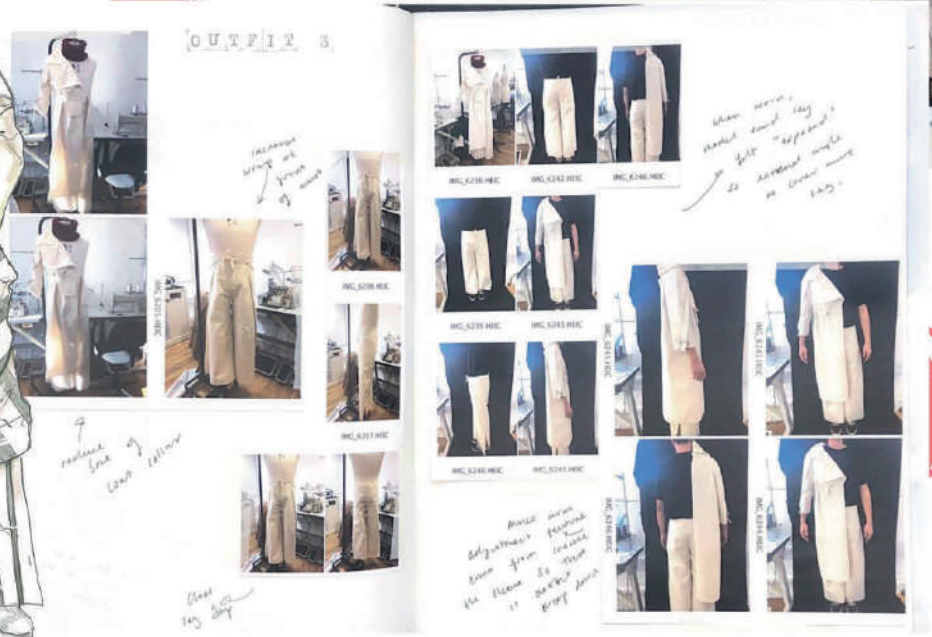








# GARMENT DEVELOPMENT





= Stitch

# WRAP TROUSERS

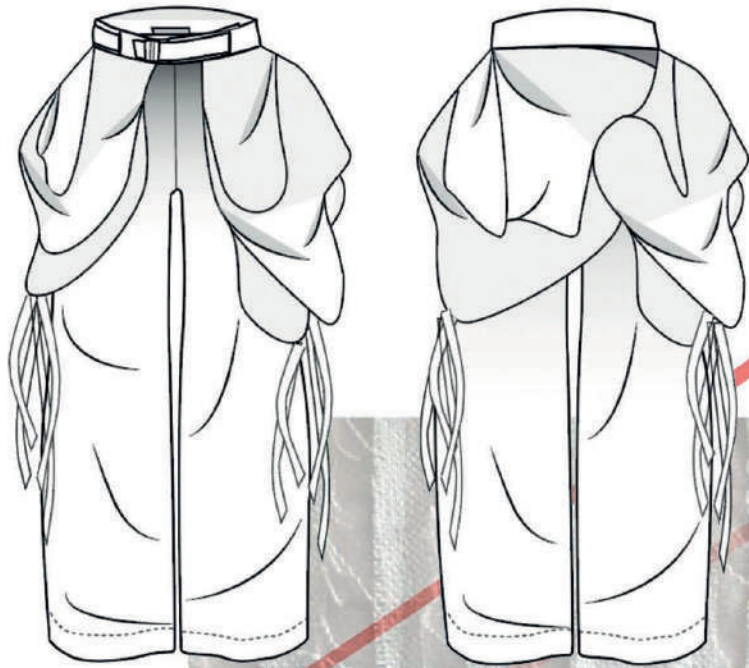
## ADJUSTABLE DETAILS

Tails on different body types to make sure it fits a wide range of bodies

The wrap trousers are made by joining a front and back panel of trouser pattern to each other round the inside leg but leaving the outer leg open. This way, you can tie the front panel round the back like an apron, and then pass the back panel through your legs to tie at the front. This makes the adjustability really easy and super quick to change the size.



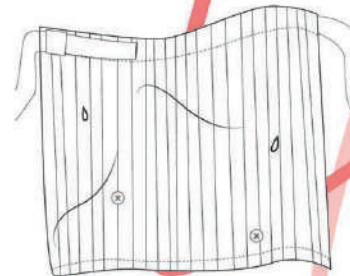




### ADJUSTABLE DETAILS

Adjustability lengthens the life cycle of clothing, meaning it can be shared, passed down and loved by multiple people of any shape or size

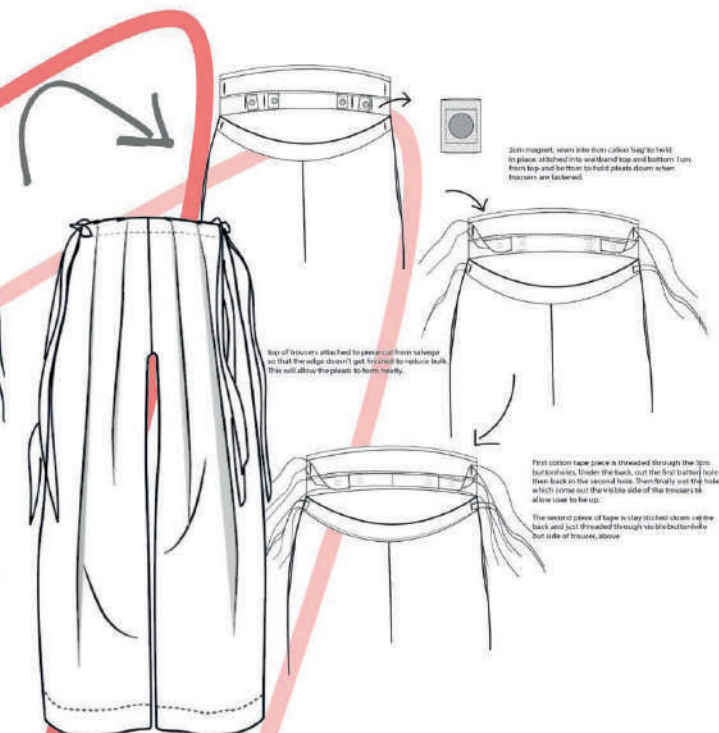
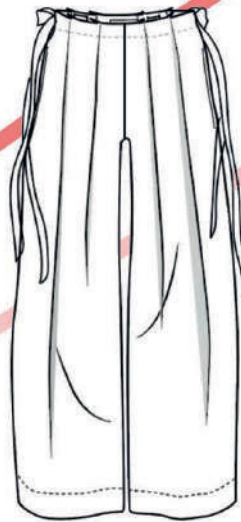
4cm x 2 metres belt made for adjustable adjustment ability. Belt goes through majority of the waistband then curves and finishes hole 25cm from end. 4cm wide loop attached to end corner of skirt from belt to loop through. Tie up to fasten



Thread chain stitch and 20mm button to stitch up specific parts of the skirt

### MULTIPLE PIECE GARMENTS

Multiple pieces come together to make one outfit but can also be separated to create two individual garments. In this case, it splits into a skirt and trousers but also works together for a layered effect for different occasions.

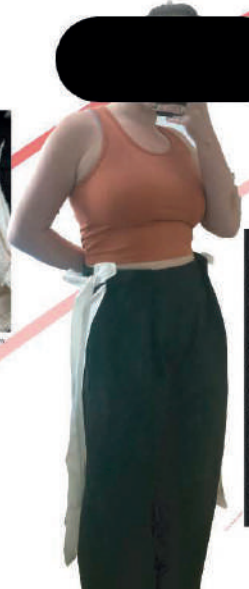


20mm magnet, sewn into from cotton bag to hold in place, attached in its waistband top and bottom. Turn from top and bottom to hold pants down when trousers are fastened.

Top of trousers attached to gusset cut from wedge so that the wedge doesn't get too close to natural bulk. This will allow the pleats to form neatly.

First cotton tape piece is threaded through the 5cm buttonholes. Under the back, cut the first button hole then back on the second hole. Then finally cut the hole which come out the visible side of the trousers to allow use to be fast.

The second piece of tape is layered (stitch) down onto back and just threaded through visible buttonhole cut side of trousers, above



SHOWN ON WAIST 34



REVERSIBLE COAT



OPTION 1

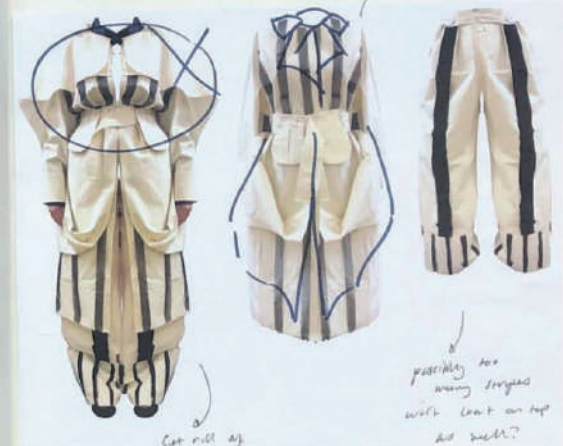
OPTION 2

Having reversible pieces means you can change how the garment looks with an outfit, making the lifespan twice as long and wearability twice as much. It means the piece will go with more outfits and therefore extend the cycle of that piece.





TOILE DEVELOPMENT



Get rid of hand ring, unnecessary, not overwhelming.





FABRICS.

All fabrics are organic, undyed, repurposed or deadstock



BANDE

By Alexandra Atkins





# Range Plan

Alexandra Atkins

BANDE AW24





BANDE

*By Alexandra Atkins*







organza striped cotton trench coat  
coral and seaweed motif embroidered shirt  
organic cotton geometric jeans  
headscarves from charity shops in and around Bath  
shoes by Dr.Marten

SEAWEEED EMBROIDERY,

PRINTS FROM 1901

