

THE SELF OF THE EDGE OF THE SELF





CHAPTER ONE

A sand was once a rock

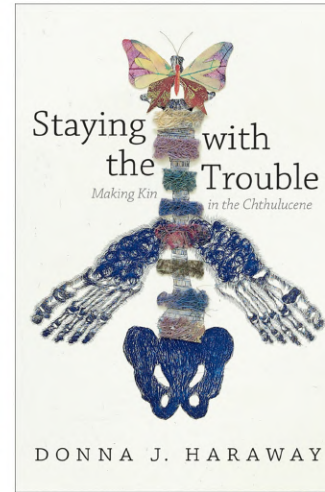
Research:



2001: A Space Odyssey



The Matrix



Staying with the Trouble: Making Kin in the Chthulucene
by Donna Haraway, 2016



Drawing of Cthulhu by H. P. Lovecraft



René Magritte, The Lovers, 1928

I have a keen interest in how humanity will exist in the future. I inspired by *The Matrix* and the grand narrative of *2001: A Space Odyssey*, it is foreseeable that the virtual world will develop greatly in the future, and if the future is a situation where the virtual world and the real world are overly superimposed, can we liberate ourselves from the definition of humanity in another world? Can we achieve a continuously fluid identity? I also refer to the concept of Donna Haraway, she uses "Chthulucene" for a vision of the world in which there is no hierarchy between humans and nonhuman animals, where instead all lives are interwoven. At the same time, from my fashion background, The mask is the element I am most interested in, it brings the unknown and the possibility. These investigations build up the basic worldview of my work.

Early works: some creatures I made through research, made in Blender





Action and dialogue:



1. A sand was once a rock

“Outside of this world you were a whole unity.

But in this world, you have refracted.

Separated into us.

Now we are one whole unity, together.

infinite

Becoming together, a new you'.

new 'yous'

Embrace the potentials, the fragments,

And travel deeper into this world,

Find ways of bringing your fragments together,

but don't be scared of letting them be a part.”



but don't be scared of letting them be a part.





With the main character go depth into this world, more and more masks generate on the bodies, cover their's original identity features.

The constant reproduction stopped in front of the mirror





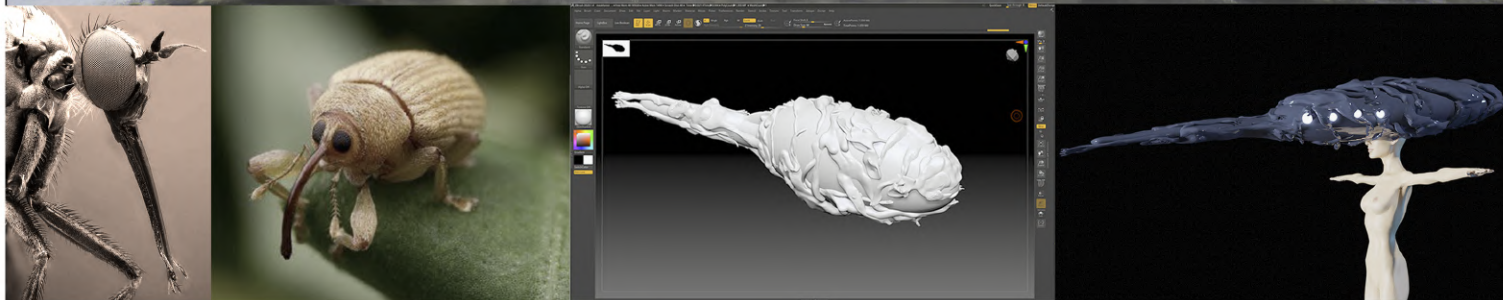
CHAPTER TWO

Once, I saw a bird that forgot how to fly.

CHARACTER AND MASK DESIGN:

Symbiosis

This series explores the idea of the mask as a part of the body, leading the character to be another kind of creature, and make them a reasonable ecosystem.



DIRECT BY: MO NAN





