

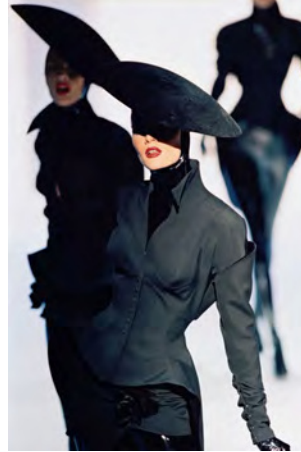


Desire  
Contemplation  
Intimacy  
Craftsmanship  
Material sensitivity  
The feeling of being still  
Quiet  
Considered  
Tender

*Moulded Forms and Concealed Objects*

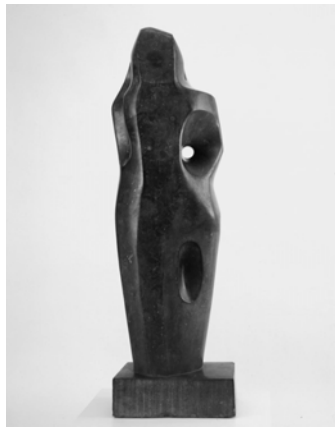
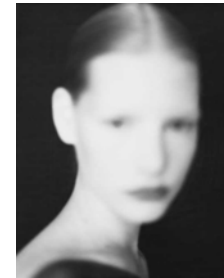
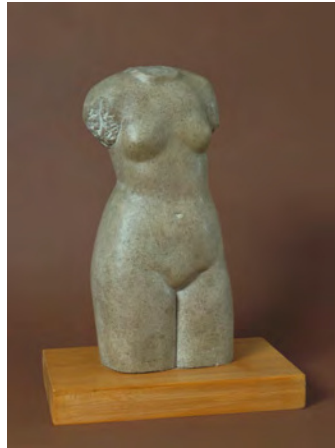
The starting point for this body of work comes from a desire to cultivate a sense of intimacy between wearer and garment, with a focus on craftsmanship and material led design. Building from practices traditionally used in millinery, elements of each piece are specifically moulded to the body, resulting in the creation of something uniquely bespoke. This moulding process is further reflected in the details of each garment, in pockets and sculpted elements integrated amongst the considered tailoring.

The following portfolio shows Rebecca's work in progress, she will complete her MA in September 2022.



I SAY THE WORD  
I SAY YOUR NAME  
I COVER YOU  
I SHELTER YOU  
YOU ARE THE ONE  
YOU ARE MY OWN  
I SMELL YOU ON MY SKIN

HELMUT LANG





wool felt moulded over mannequin  
could use 3D based on body  
map to create bespoke piece

corset precisely moulded piece  
with areas of drape





moulded piece integrated with woven pieces need to work out how to support form covers. feasible?



take some volume out from around hips, or needs more support





add bars  
need to firm  
so that it doesn't  
overlay on bust  
pieces



need to  
rethink  
pocket  
placement  
so it  
doesn't  
interrupt  
this line



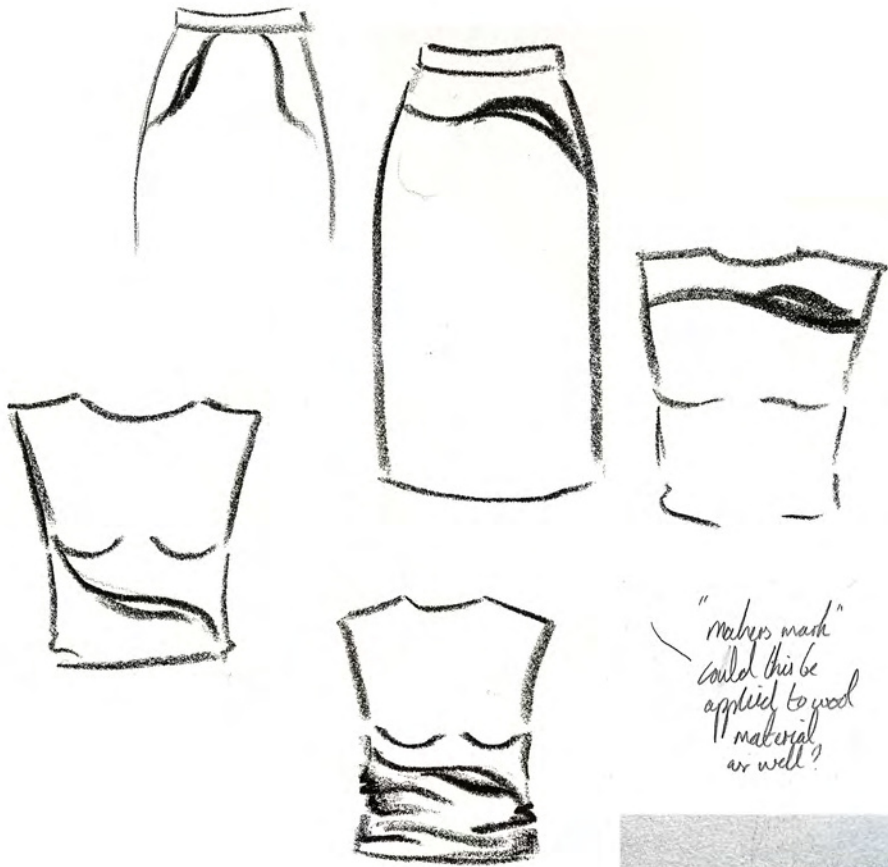
add to  
back of collar

this piece in  
felt to give  
more  
structure  
carry felt  
to back in  
some way



\* also shoulder  
pads, sleeve  
head?  
more ease  
in sleeve

vents? definitely  
sleeve possibly  
back



"mohr's mark"  
could this be  
applied to wool  
material  
or well?



hand shaped  
clay used a base  
for moulding over

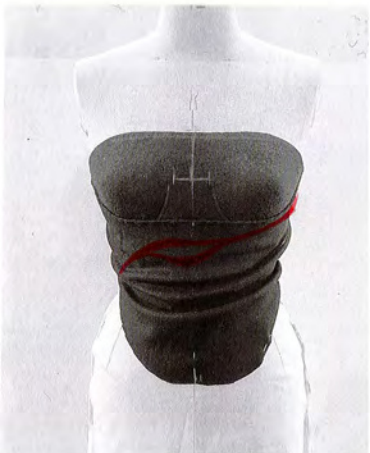


— depicts hidden under the  
surface of the fabric, a secret  
between wearer and  
garment



could clay forms themselves  
be used as jewellery? Made in  
metal, can be kept in  
felt pockets on the body or worn





openings create space within the garment like Hepworth sculptures



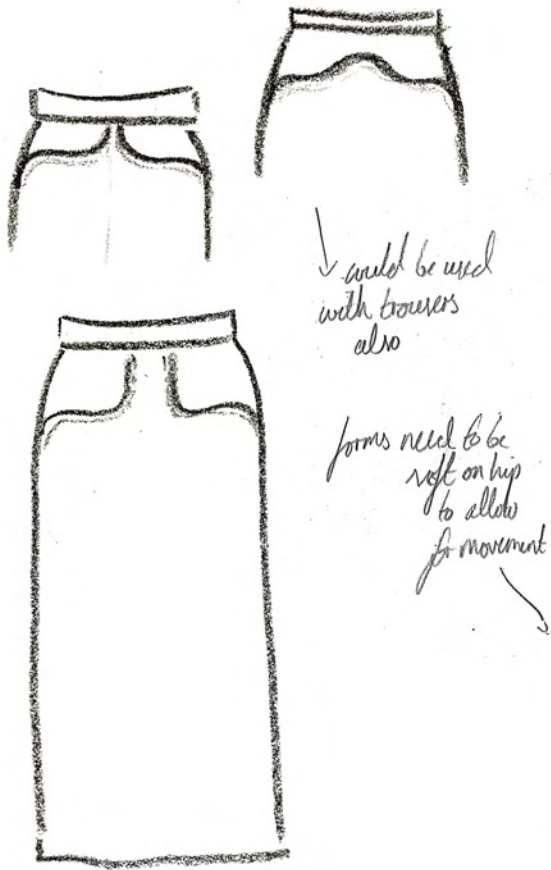
no opening just line



cast wood over life cast to give more representative body form?



clay forms/metal create a nice weight on the body





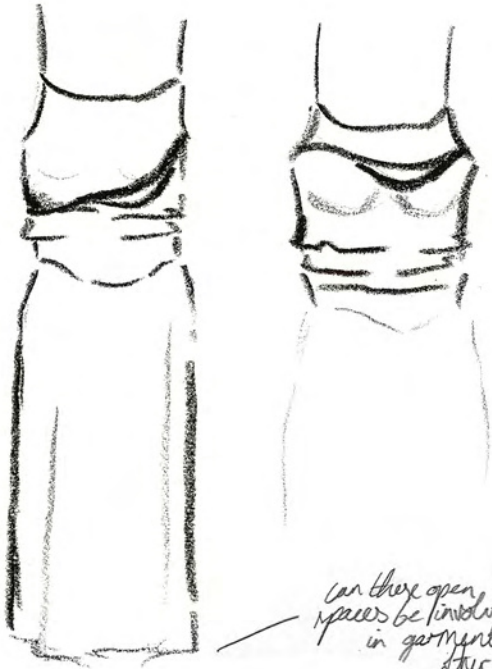
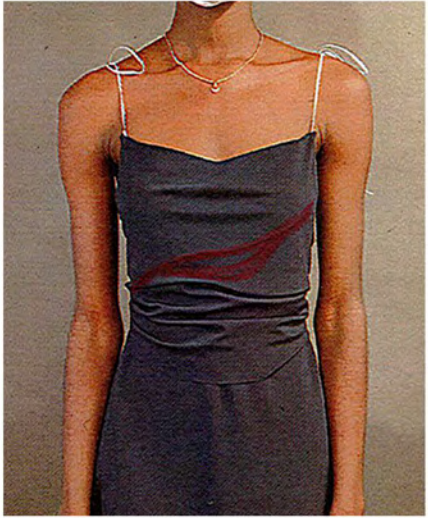


→ need to work how to maintain form on pockets, stiffen or wadding/stuffed



→ could this be another pocket detail?





can these open spaces be translated in garments of other fabrics? how do these details translate to other fabrics

— shape needs to cling more? More ruching volume around torso

— change shape of hole at back to mirror openings in wool garments

