

*The* I 9  
*M A N*

*From*

**NOWHERE**



**B w e S o e &**

# THE MAN FROM NOWHERE

The Man from Nowhere is a Project exploring the history of my people, their struggles, and the world that I envision them to have, the world that I want them to have, a world full of peace and prosperity.

During this project, I researched the life of my people, their lifestyles and their morals, and what they have gone through and what they are going through. And through this perception, I am creating a world where they are protected by people that will continue to serve them.

For many decades, my people, the Karen, have suffered from the persecution and discrimination by the Burmese soldiers. We have continuously faced the violence and torture which the Burmese soldiers have delivered upon us on a regular basis. They would come to the villages and burn it down without any warnings; causing the Karen Civilians to flee and have no place to call home.

No place to call home.  
No one knows who we are.  
The man from nowhere.

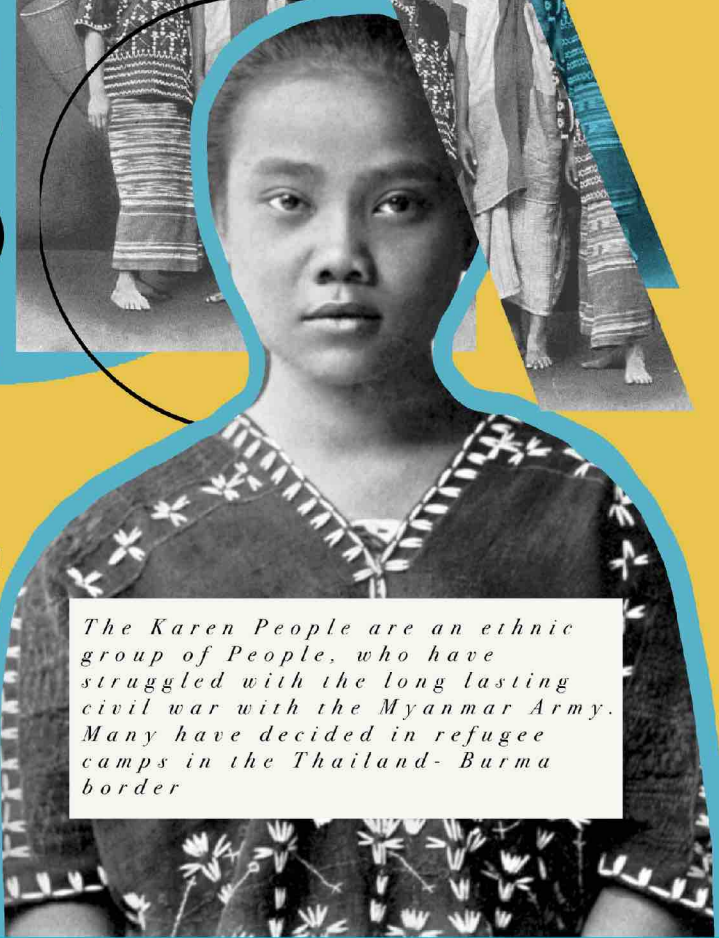
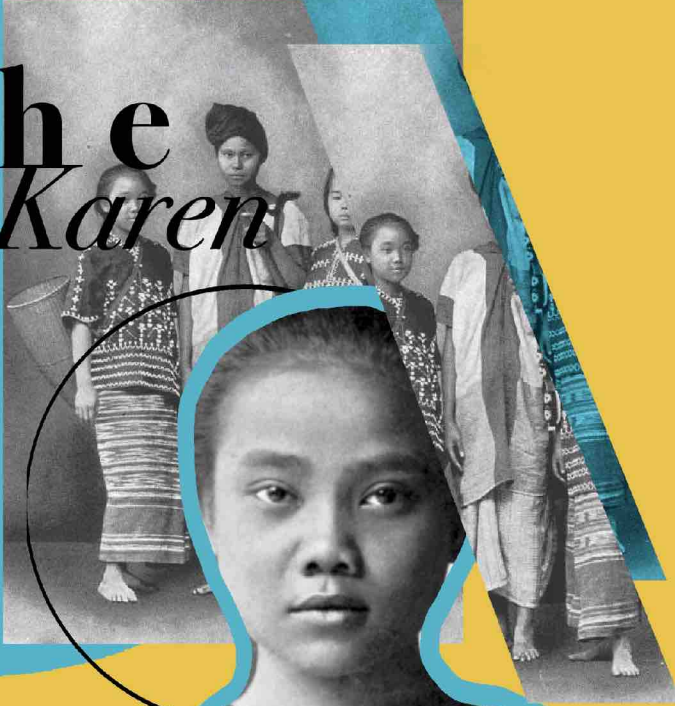
Form this, I began to explore the origin of the Four Horsemen of the apocalypse. They are four different beings sent by God Himself to punish people who have done wrong. However, I want to perceive them as protectors of my people, The Karens. During the exploration of this project, I studied the idea of the four horsemen individually and explored what their objectives and morals are. The four horsemen are, the white horse, which is deemed to be the prince, Christ Himself, the red horse, which is seen to represent war, The black Horse, which is famine and the final horsemen, the pale horse, which is seen as death himself.





# MY People

# The Karen PEOPLE &



*The Karen People are an ethnic group of People, who have struggled with the long lasting civil war with the Myanmar Army. Many have decided in refugee camps in the Thailand- Burma border*

GENERAL BO MYA IS KNOWN AS A NO-NONSENSE KAREN FREEDOM FIGHTER. HIS STRAIGHTFORWARDNESS AND RUTHLESSNESS HAVE EARNED HIM BOTH RESPECT AND FEAR AMONG KAREN SOLDIERS AND LEADERS ALIKE

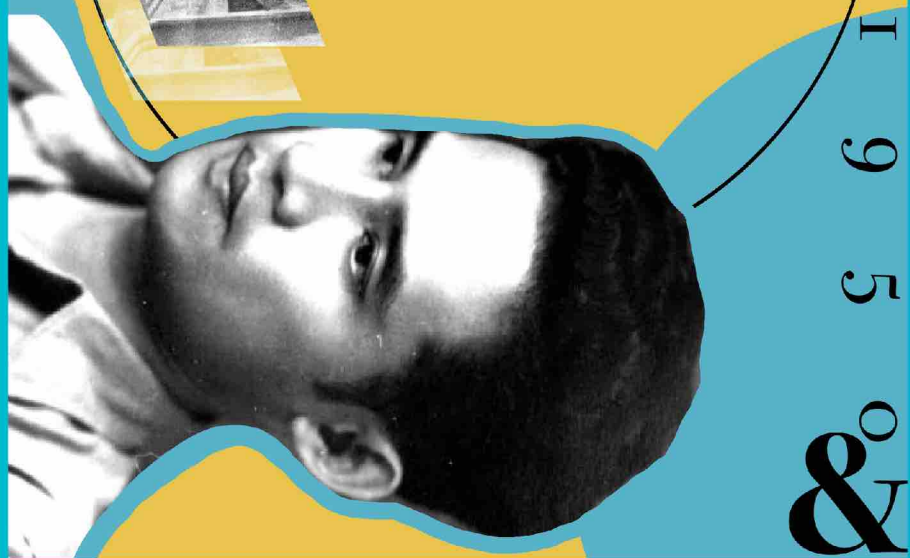
AND LEADERS ALIKE



# The Leader

Saw Ba U Gyi

*Saw Ba U Gyi initially worked together with General Aung San to prevent violence and support reconciliation between and within communities. Living in Yangon now, he formed the Karen Central Organization (KCO). The KCO was recognized as an official body representing the interests of the Karen by the ruling political powers. Having been in contact with the Japanese, Saw Ba U Gyi at one point even went to Japan for a visit. In 1944, the British were ready to reinvade Burma.*



1  
9  
5  
&  
6



# THE PEOPLE

KAREN PEOPLE ARE FARMERS WHO CULTIVATE "HILL RICE". THEY LIVE IN VILLAGES THAT ARE SMALL CLEARINGS IN THE FOREST. HOUSES ARE MADE ENTIRELY OF BAMBOO AND THATCH. A NEARBY STREAM OR RIVER MAY PROVIDE A PLACE FOR VILLAGERS TO BATHE, DO WASHING, AND COLLECT DRINKING WATER. LIFE FOLLOWS A SEASONAL PATTERN OF PLANTING AND HARVESTING RICE.



SOAW KAREN WOMEN CARRYING GRAIN IN LARGE BASKETS  
Thaifawaddy Hills

SOAW KAREN WOMEN CARRYING GRAIN IN LARGE BASKETS  
Thaifawaddy Hills



# TRADITION

KAREN STATE, "KAW THOO LET", IS A HEAVILY FORESTED, MOUNTAINOUS STRIP OF LAND THAT FORMS A DIVIDER BETWEEN THAI AND BURMESE PEOPLE, AS WELL AS BETWEEN THE PEOPLE AND THE IRRAWADDY DELTA WITHIN BURMA/MYANMAR.





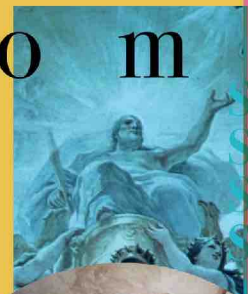
The Heroes

# CONCEPT

The four horsemen of the apocalypse, sent by God to punish people. They're in the story



Concept



&



The Concept of my project is creating a world where the Four Horsemen are the heroes of my people. Exploring the ideas of mythologies and folklore heroes, i was able to build the idea of the four people that will help and guide my people



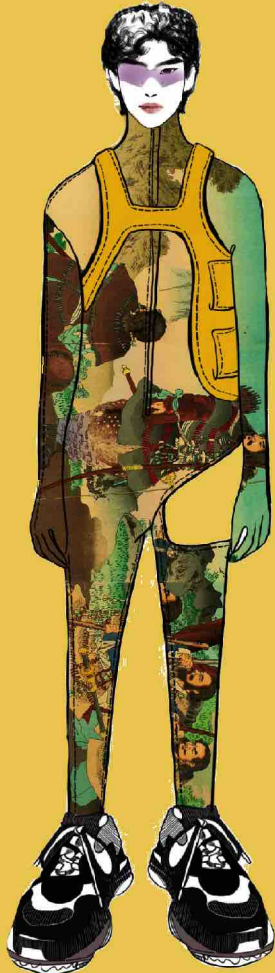
# IDEATION



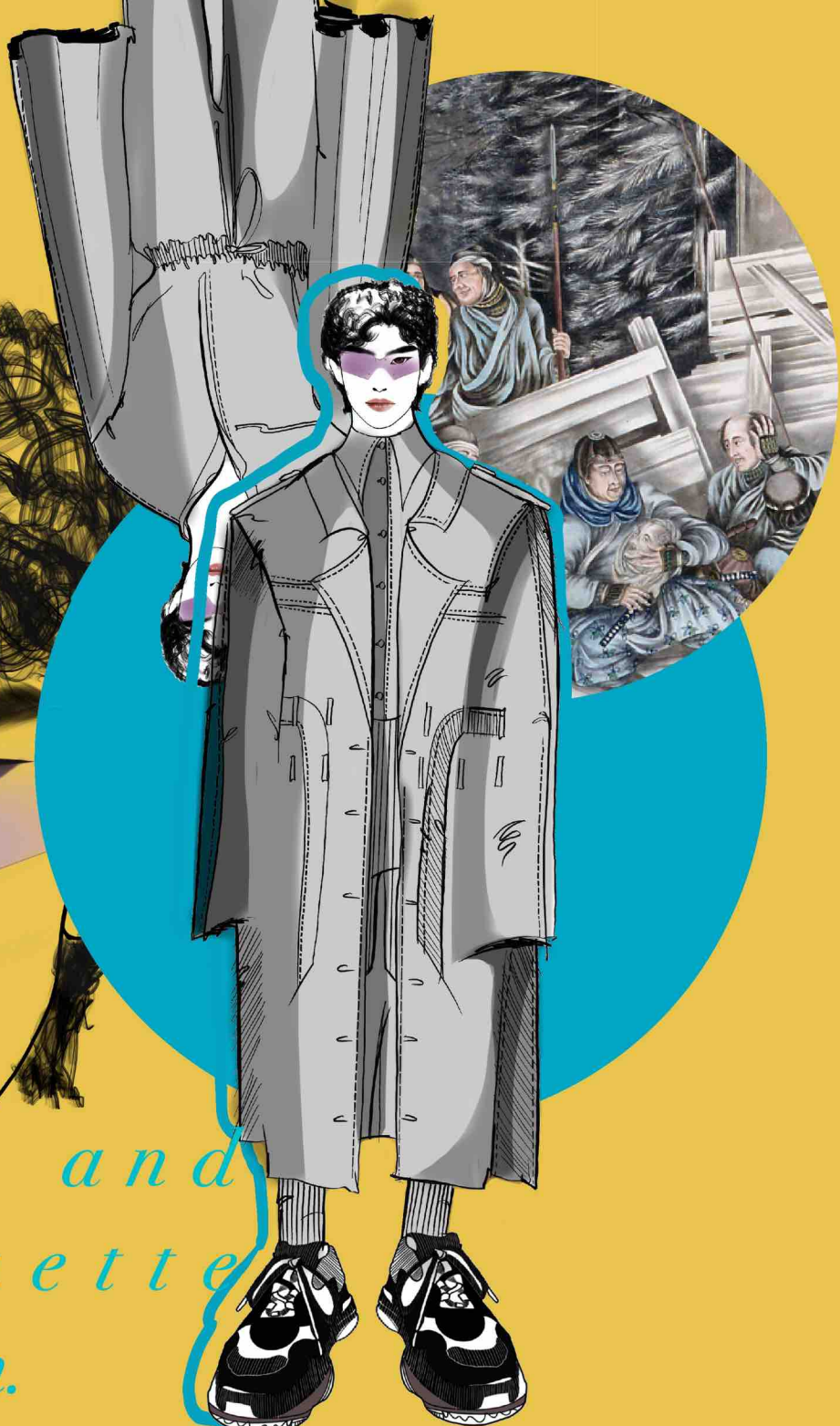
A.

B.

C.



*Print and silhouette exploration.*





2



1.

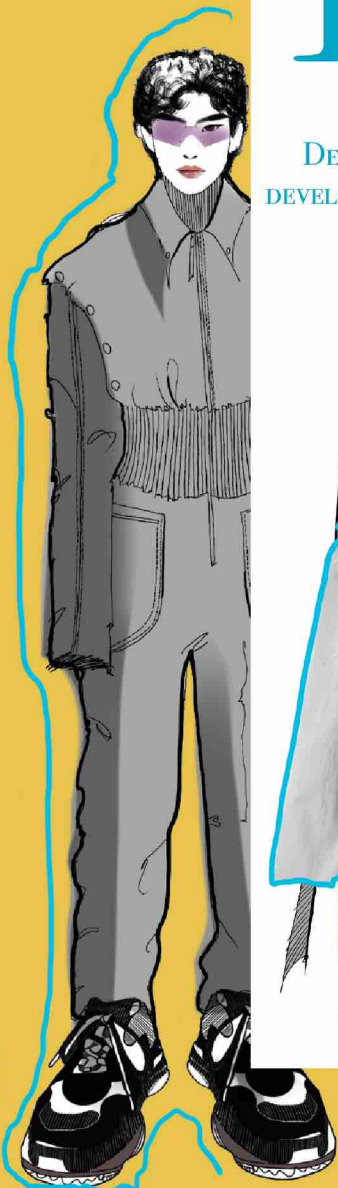
2.

3

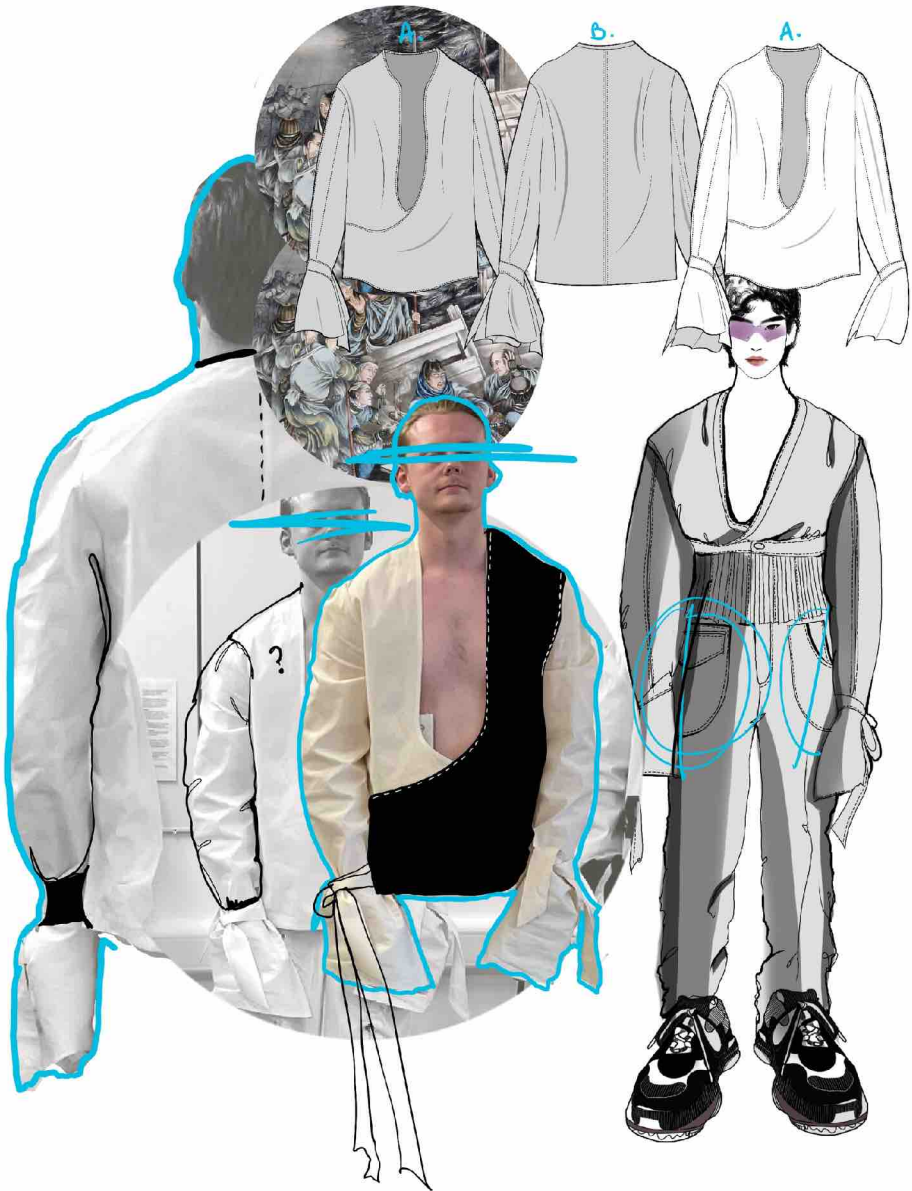


IDEATION

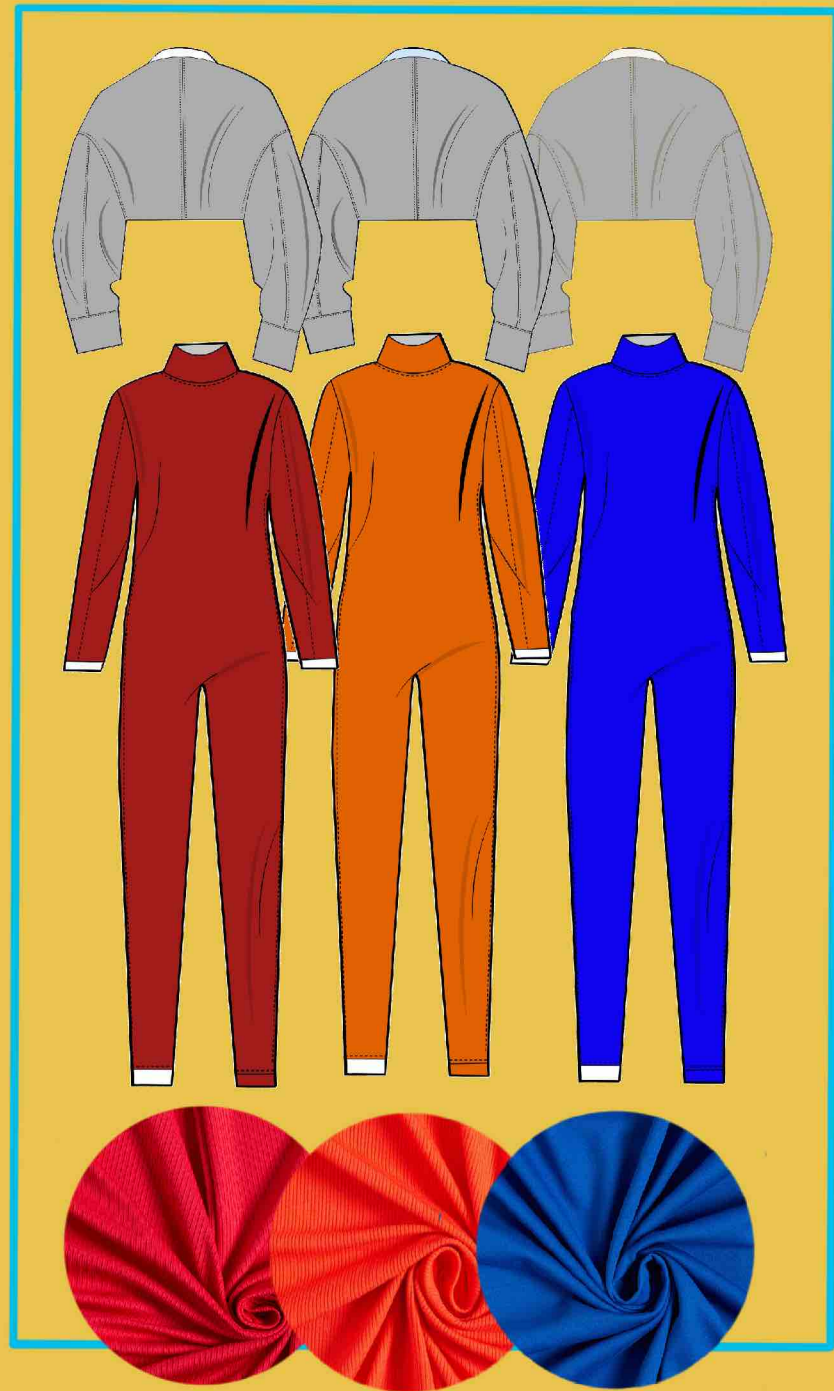




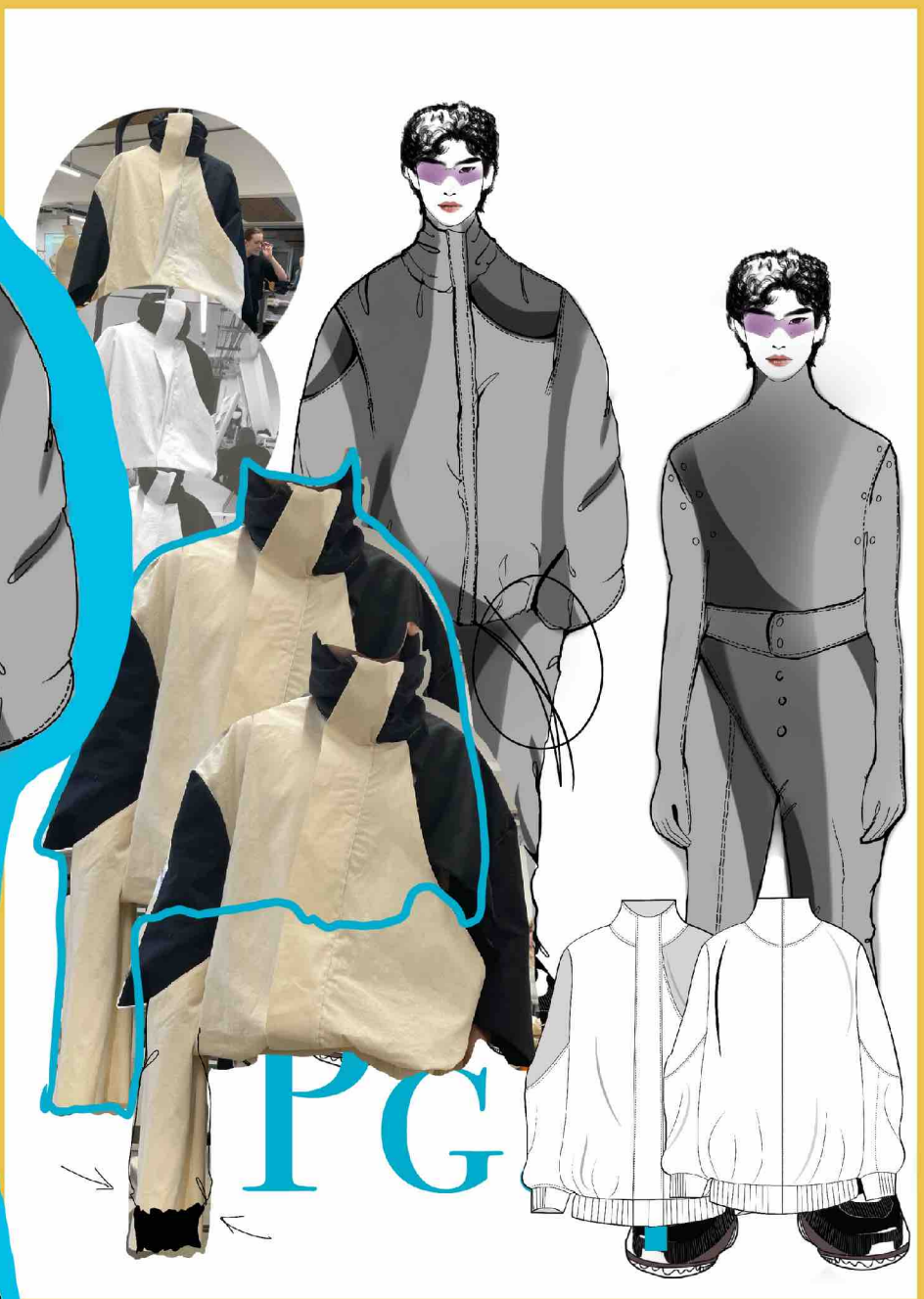














Final looks line up



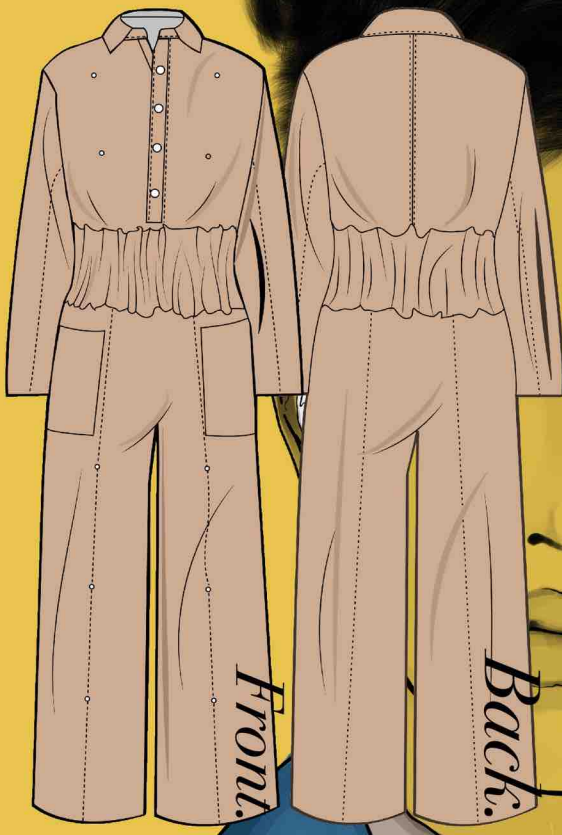


# Look One

Front



Back



*A. Long Petrol blue Plasticized Trenchcoat with inverted double pocket. Back pack attached Bon to the back.*

*B. Denim boilersuit with gathered elasticated waistband and pull cords throughout the trousers to create gathering.*



1. 2. 3.

- 1. BLONDE VISCOSE SATEEN
- 2. Petrol blue plasticised Linen
- 3. LIGHT BROWN DENIM

*look one*



# Look Two - Look Two - Look Two

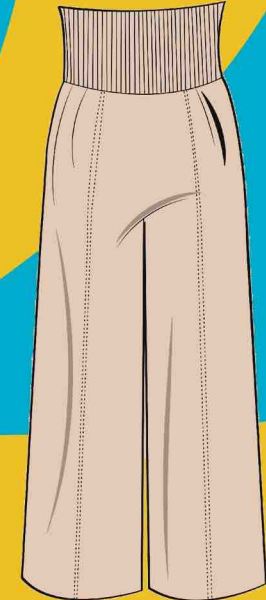
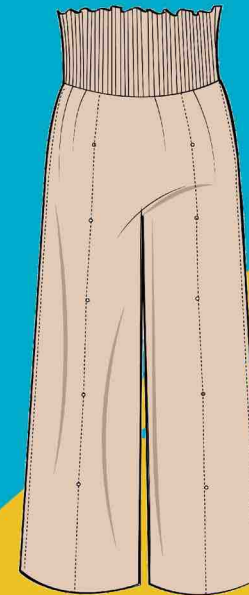
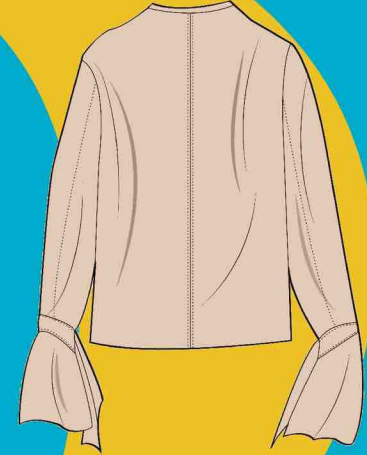


1. Beige denim

2. Beige satin

A. Open deep neck, satin shirt, with long sleeves and cuff tied with a tie.

B. Highwaisted trousers with gathered waist and pull cords

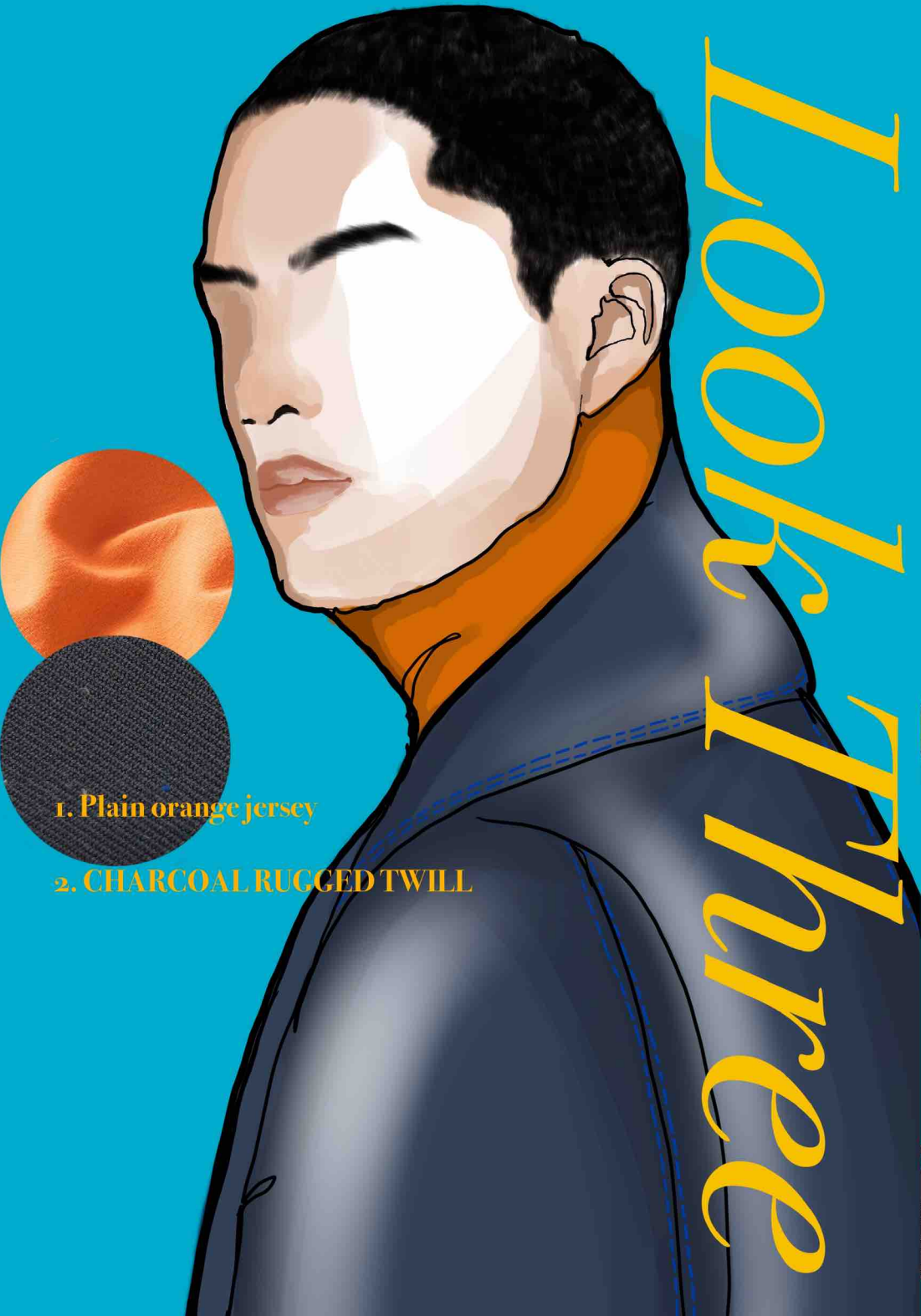


Front

Back

Look Two - Look Two - Look Two





Look Three



1. Plain orange jersey

2. CHARCOAL RUGGED TWILL



Cropped charcoal rugged twill jacket with patch pockets. Rangoon sleeve

B. Orange cotton jersey cat suit with zip in the back.

front.

back.

A

B



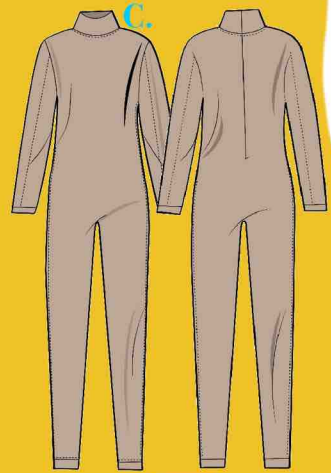
# Look four.

# 4

A. Charcoal stretch velvet with patched areas.

B. Charcoal stretch velvet one leg trousers with elastic in the back waistband.

C. Beige cotton jersey catsuit with zip in the back.



1. Plain beige cotton jersey.

2. CHARCOAL STRETCH VELVET.

