



ABBIE YOUNG

EMAIL: abbiegeorgia99@hotmail.com

INSTAGRAM: [ayoungfashion_design](https://www.instagram.com/ayoungfashion_design)



**LIFE JUST GETS
TOO MUCH**

SOME TIMES



Berlin was repressed from the Nazi reign, Berlin wall, and the Cold War. Unification came when the wall was torn down and music and graffiti were used as expressive outlets.
BERLIN IS NOW FREE!



INFLUENCES TAKEN FROM TRAVEL (INCLUDING MY PLACEMENT YEAR IN BERLIN) HIGHLIGHTING THE IMPORTANCE OF FREEDOM AND SELF-EXPRESSION, SUBCULTURAL STYLES AND TREND MOVEMENTS, SUCH AS LOLITAS AND THE SIGNIFICANCE OF INFLUENCES SUCH AS LITERATURE, FILM AND MUSIC- A CELEBRATION OF IDENTITY AND CREATIVITY



BABOOSHKA

KATE BUSH

SHE WANTED TO TEST HER HUSBAND
SHE KNEW EXACTLY WHAT TO DO

A PSEUDONYM
TO FOOL HIM

SHE COULDN'T HAVE MADE A WORST MOVE
SHE SENT HIM SCENTED LETTERS
AND HE RECEIVED THEM WITH A STRANGE DELIGHT
JUST LIKE
HIS WIFE

BUT HOW SHE WAS BEFORE THE TEARS
AND HOW SHE WAS BEFORE THE YEARS FLEW BY
AND HOW SHE WAS WHEN SHE WAS BEAUTIFUL
SHE SIGNED THE LETTER

ALL YOURS
BABOOSHKA BABOOSHKA BABOOSHKA JA JA

ALL YOURS
BABOOSHKA BABOOSHKA BABOOSHKA JA JA

SHE WANTED TO TAKE IT FURTHER
SO SHE ARRANGED A PLACE TO GO

TO SEE
IF HE

WOULD FALL FOR HER INCOGNITO
AND WHEN HE LAID EYES ON HER
HE GOT THE FEELING THEY HAD MET BEFORE
UNCANNY

HOW SHE
REMINDS HIM OF HIS LITTLE LADY
CAPACITY TO GIVE HIM ALL SHE NEEDS

JUST LIKE HIS WIFE BEFORE SHE FREEZED ON HIM
JUST LIKE HIS WIFE WHEN SHE WAS BEAUTIFUL
HE SHOUTED OUT

I'M ALL YOURS
BABOOSHKA BABOOSHKA BABOOSHKA JA JA

ALL YOURS
BABOOSHKA BABOOSHKA BABOOSHKA JA JA

ALL YOURS
BABOOSHKA BABOOSHKA BABOOSHKA JA JA

BABOOSHKA BABOOSHKA BABOOSHKA JA JA

BABOOSHKA BABOOSHKA BABOOSHKA JA JA

DADDY ISSUES



LOLITA

LIFE JUST GETS TOO MUCH SOMETIMES

Abbie Young - SS23



SEDUCTRESS



CHILDISH AND PLAYFUL







LOLITA JAPANESE SUBCULTURE

Express yourself

STREET FASHION BETWEEN
TWO MAJOR CITIES



RUFFLES & FRILL DEVELOPMENT THROUGH SILHOUETTE TAKEN FROM THE USE OF LAYERING SILK AND SHEER FABRICS TO CREATE INTERESTING DETAIL

LIFE JUST GETS TOO MUCH SOMETIMES

Abbie Young - SS23



SILK
SATINK
ORGANZA
TULLE
FLORENCE NET

WANT ELASTIC INTO THESE SECTIONS

SATIN MATERIAL

collages

ESCAPISM

references to trends in media as forms of escapism -bridgerton and the regency era

REGENCY CORE VIBES

COLLAGE

floaty silhouettes, layering, delicate fabrication and accessories

LIFE JUST GETS TOO MUCH SOMETIMES

Abbie Young - SS23

TEXTILE DETAILS



FREEDOM



PHADON

FRESHFRUITS

JAPANESE AND BERLIN CULTURE

GET YA GLADRAGS ON!
GET YA GLADRAGS ON!
GET YA GLADRAGS ON!
GET YA GLADRAGS ON!
GET YA GLADRAGS ON!

DRESS YOUR OWN AGE
BEING A LOLITA IS 'INAPPROPRIATE'



dress your own age

trim details

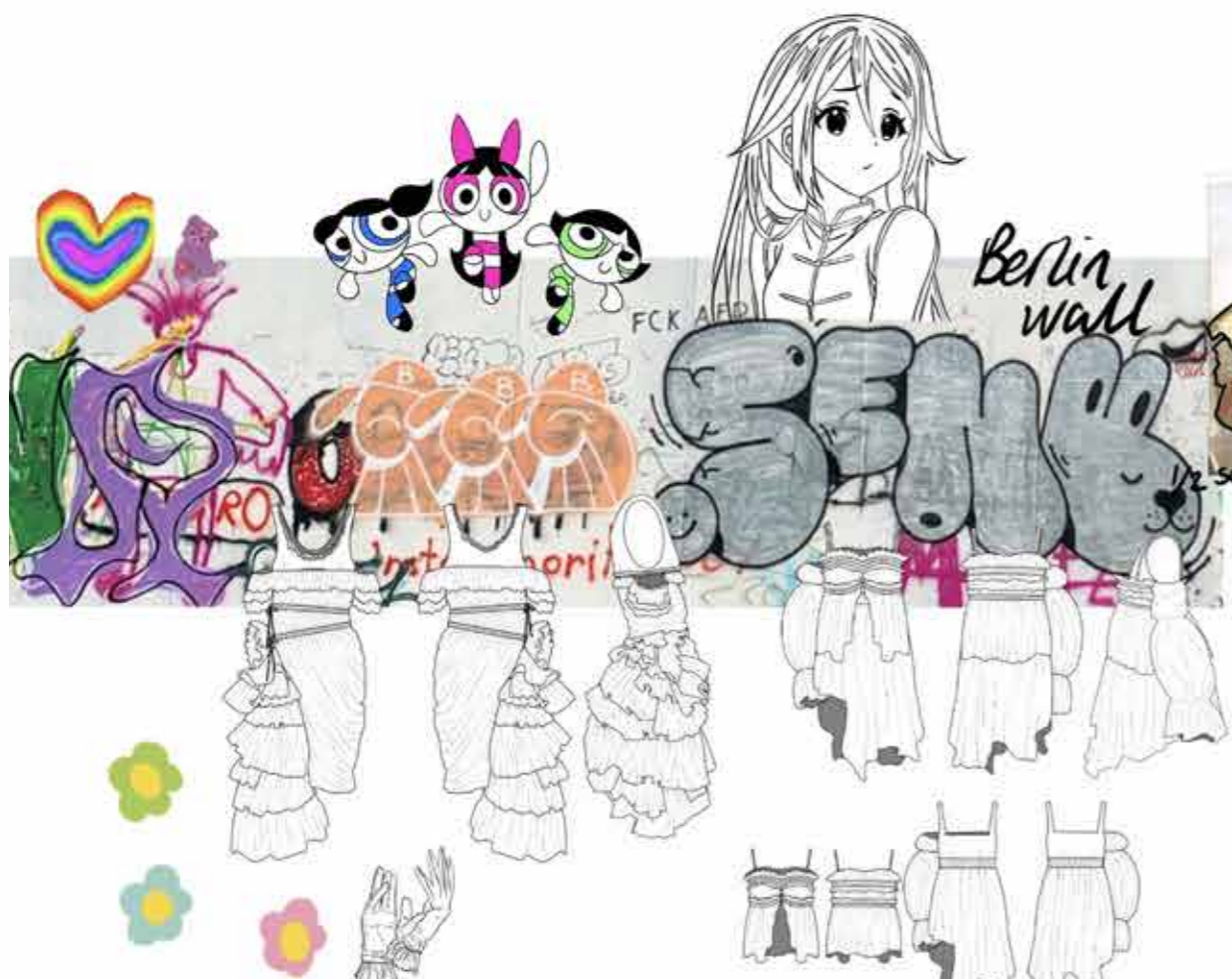
KNITWEAR
TEXTILE INFLUENCE
AS OPPOSED
TO BEING A
TRADITIONAL LOLITA

MUTTON DRESSED AS LAMB

hights/gloves

*mixed media
textile experimentation*

CHILDLIKE DRESSING
COLLAGE



final flats



LIFE JUST GETS TOO MUCH SOMETIMES

Abbie Young - SS23



lolita

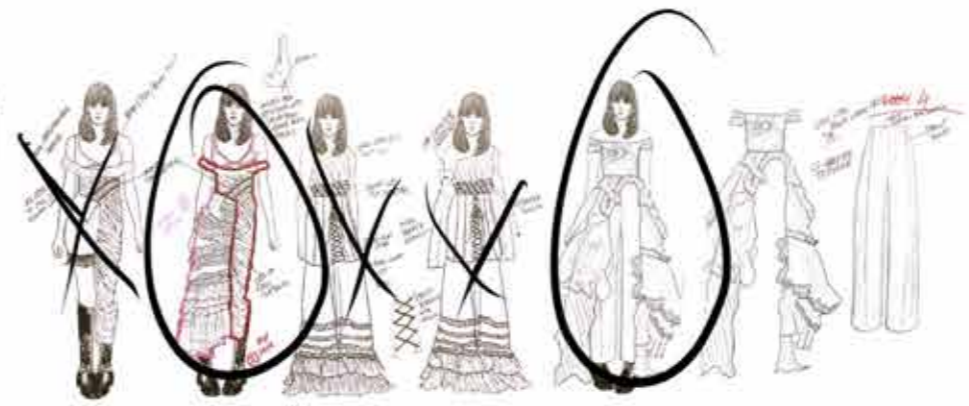


head pieces

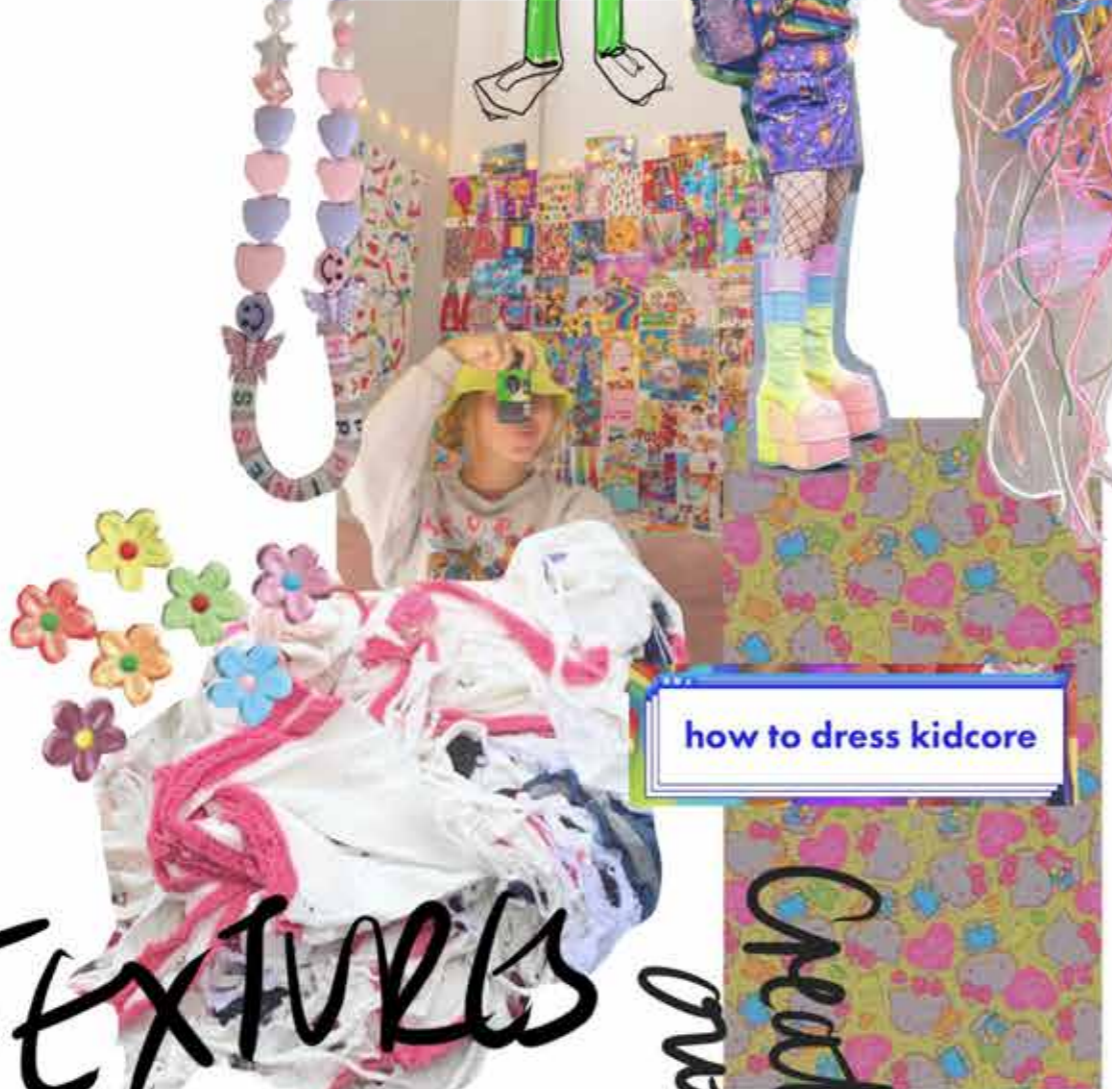


fresh fruits

Marajun



KNITWEAR IDEAS



how to dress kidcore

TEXTURES

primary imagery

Creative
outlets

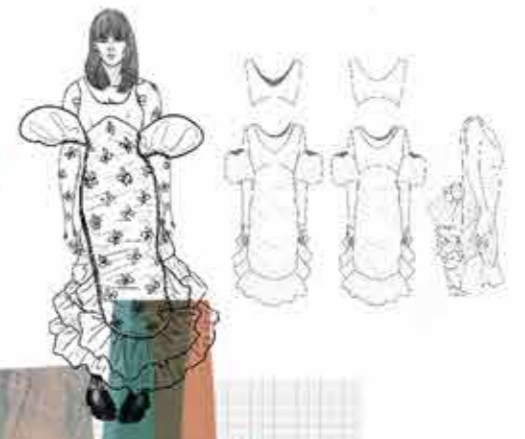


LIFE JUST GETS TOO MUCH SOMETIMES

Abbie Young - SS23



COLOUR
EXPLORATION
DEVELOPMENT



LIFE JUST GETS TOO MUCH SOMETIMES

Abbie Young - SS23

toile Review



figging fitting

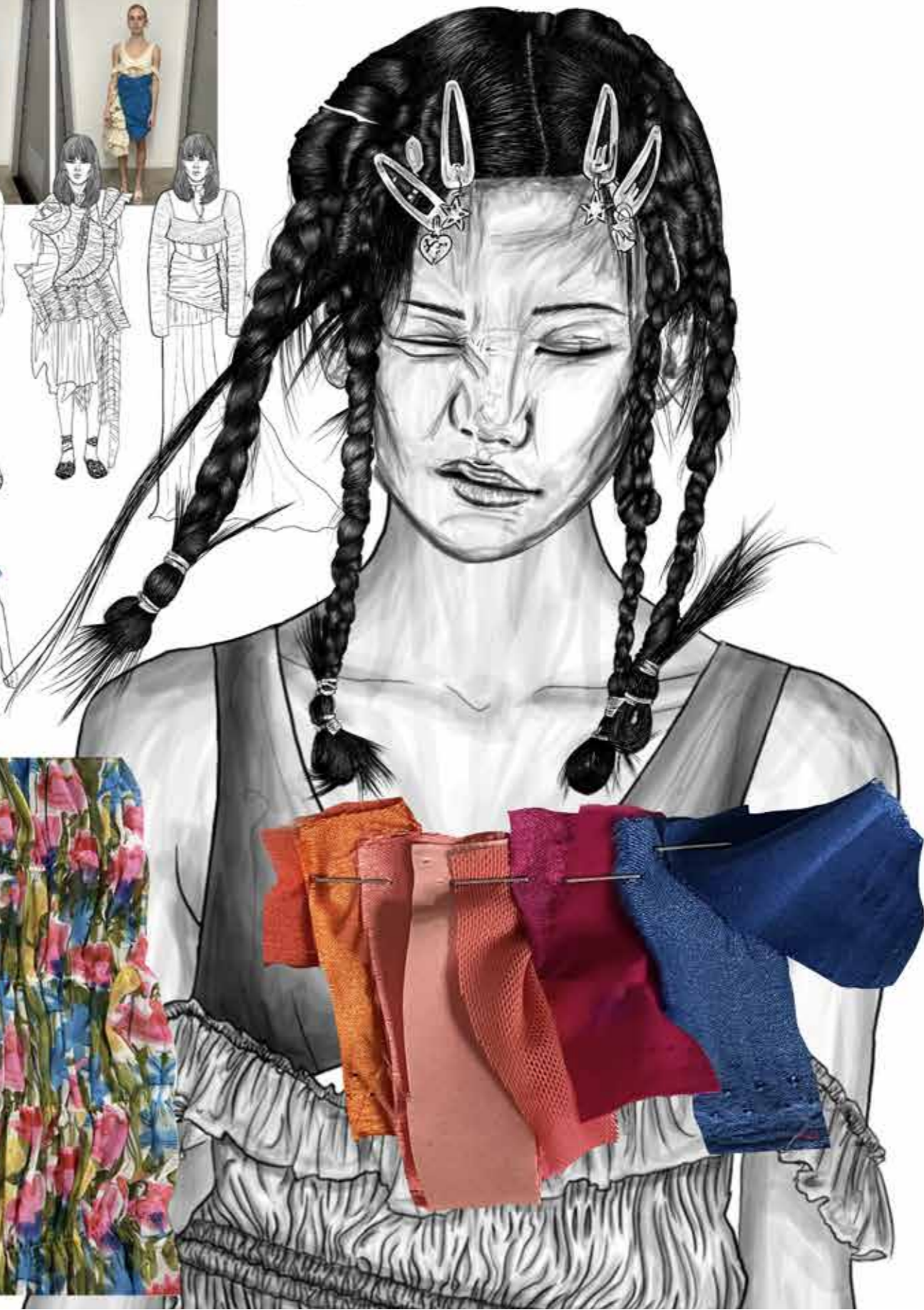
ACCESSORIES



primary imagery



Streets of Germany



LIFE JUST GETS TOO MUCH SOMETIMES

Abbie Young - SS23



PRINT PLACEMENT



EXPERIMENTATION



MUTTON DRESSED AS LAMB





colour and print placement

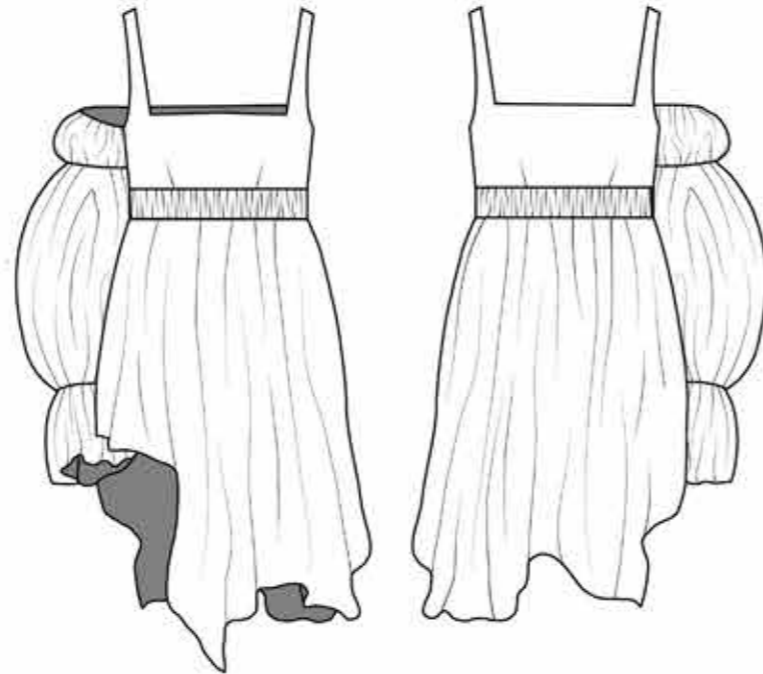
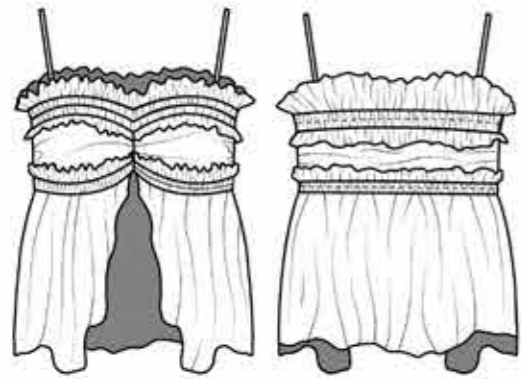
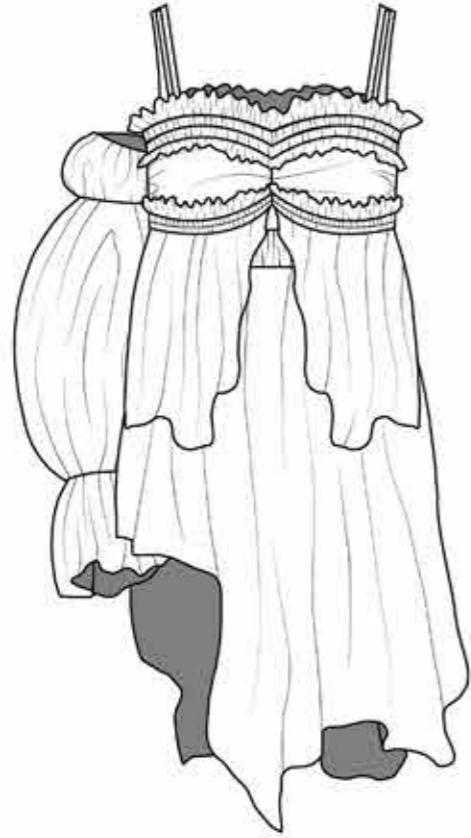
dress makeup:
 satin bralet and lining
 satin ruffles
 lycra dress lining
 florence net main body dress

look one



**DRESS WITH BRALET DETAIL,
 SIDE BUSTLE MADE UP OF
 RUFFLES. AND CHANNEL
 GATHERS UPON FLORENCE
 NET PRINTED SHEER FABRIC**

a flowy asymmetrical dress with one sleeve, complemented with a top that drapes over it. this has lots of ruffles. which is then paired with a knitted skirt that i worked on creating with @naive.knitwear



look two



OUTFIT MAKEUP:
DRESS: PRINTED SILK TWILL
SKIRT: VARIETY OF DIFFERENT TEXTURES AND WEIGHTS OF YARNS
TOP: SATIN POLYESTER BLEND



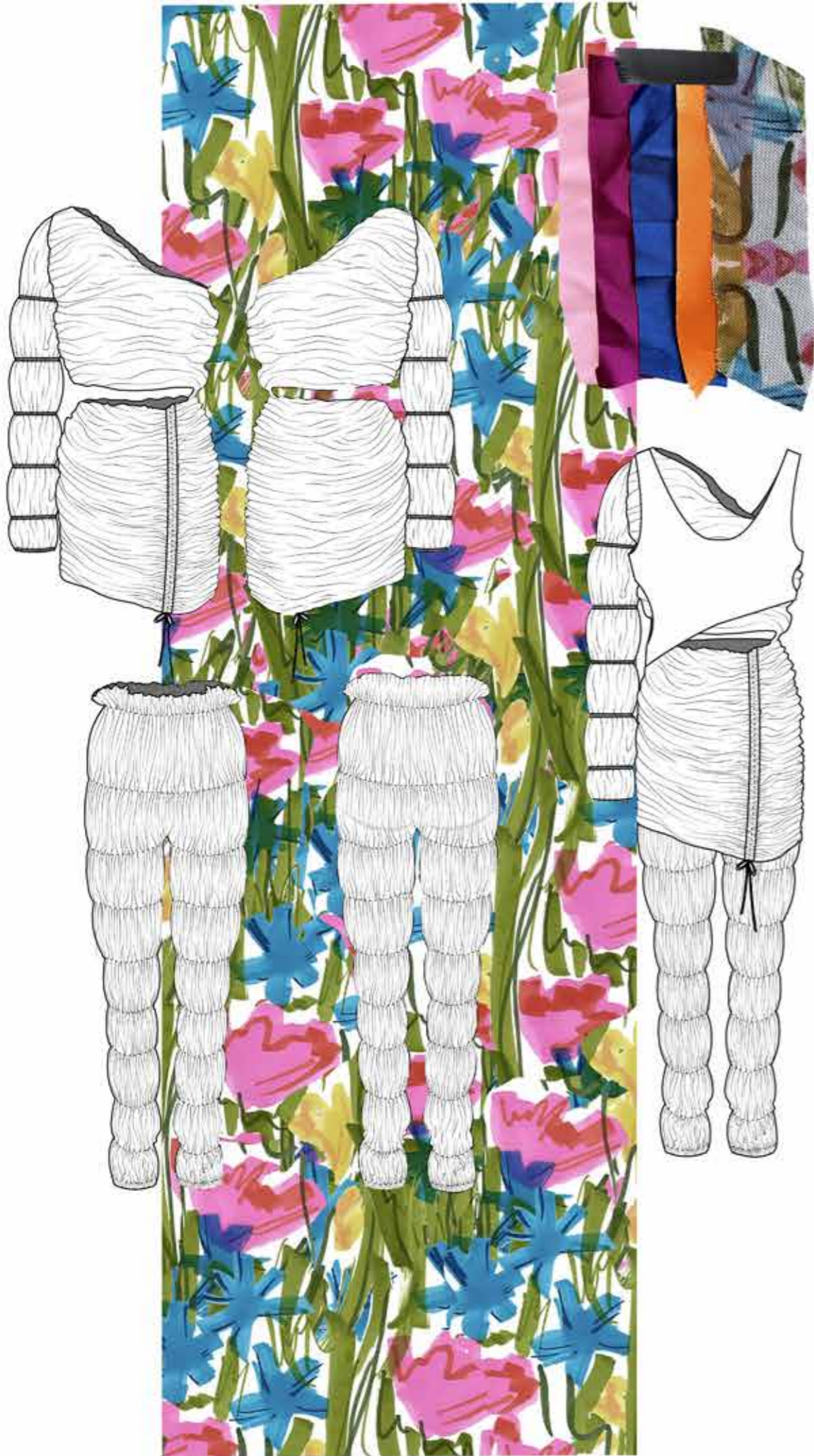
a stretch dress with attached sleeves and built in girdle features a back bustle, ruffles and statement print up



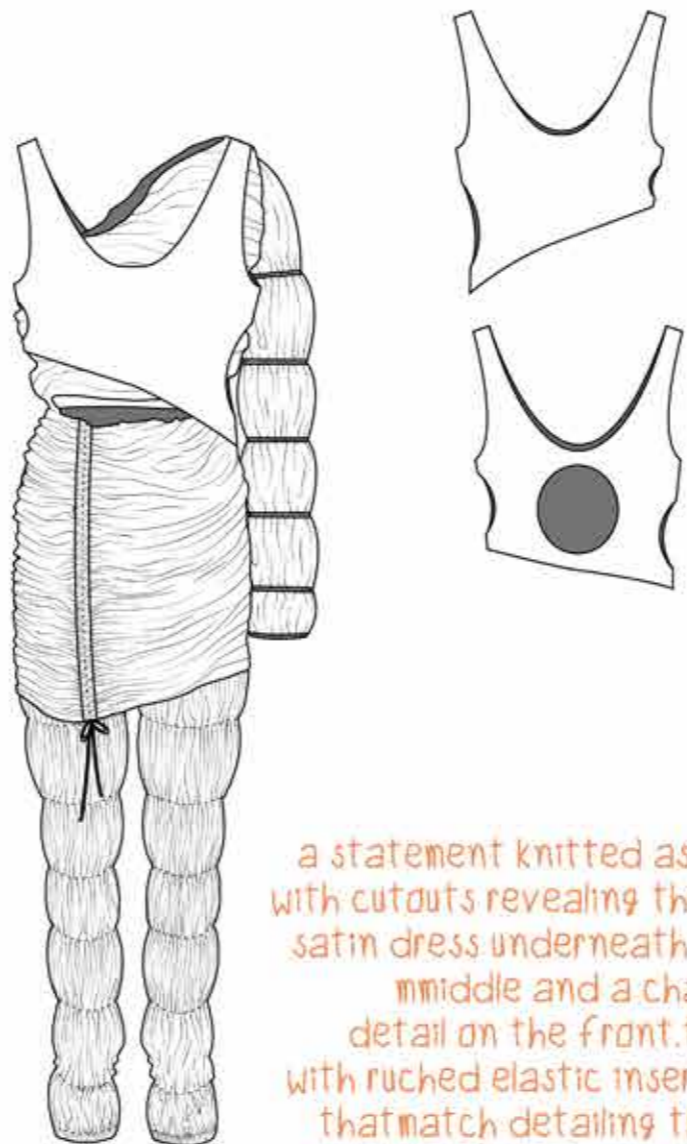
OUTFIT MAKEUP
DRESS: SOFT SHEEN LYCRA
PUFF SLEEVES: SATIN POLYESTER MIX
RUFFLES: SATIN POLYESTER MIX

LOOK THREE





OUTFIT MAKEUP:
 TOP: VARIOUS WEIGHTS AND TEXTURED YARNS
 DRESS: MAIN BODY SATIN POLYESTER MIX
 LEGGINGS AND DRESS SLEEVE: FLORENCE NET MESH



a statement knitted assymmetric top with cutouts revealing the assymmetric satin dress underneath with cut out middle and a channel gather detail on the front.this is paired with ruched elastic inserted leggings thatmatch detailing that has been done on the one sleeve of the dress

LOOK FOUR



LIFE JUST GETS TOO MUCH SOMETIMES

Abbie Young - SS23

