

SACRED SPIRITUAL
ENERGY

THE

STRENGTH IN SOFTNESS
& COMPASSION

DIVINE

EMBRACING THE
FEMININE

FEMMININE

CHALLENGING WHAT IT
MEANS TO BE EMPOWERED

MESSENGER

EXPLORATION THROUGH HISTORICAL
RELIGIOUS, SPIRITUAL FIGURES

✓ ARCHETYPES



© JODO CAMINO

MARY MARYS ARE AN OUTLIER AMONG RENAISSANCE ART WHICH WAS MARKED BY CLASSICAL AESTHETICS OF SMOOTH HAIRLESS BODIES. ONLY SIMILAR LOOKING THING AT THE TIME IS DEPICTIONS OF WILD MEN FROM MEDIEVAL ART & LITERATURE.

TO PEOPLE OF THE RENAISSANCE SEA HAIR SYMBOLISED BEAUTY & SEX, NAKEDNESS OR MODESTY, SINFULNESS & HOLINESS - NO OTHER FIGURE FROM HISTORY EMBODIES ALL OF THESE TRAITS IN ONE PERSON AS MUCH AS MARY MAGDALENE.

ALWAYS BEEN POPULAR TO DEPICT THE MAGDALENE WITH AN EMPHASIS IN HER LONG LUSCIOUS HAIR - A TRAIT ORIGINATING WITH THE TEACHING THAT SHE'S THE UNWEDDIED THING WHICH WASHED JESUS' FEET & DRIED THEM WITH HER HAIR. IN THE 15TH CENTURY SHE WAS ASSOCIATED WITH SINFULNESS & VANITY BEFORE HER CONVERSION TO DETESTABLE SIN. GROWING SPREAD OF PROSTITUTION THE MAGDALENE BECAME WIDELY CITED IN CATHOLIC SERMONS AS AN EXAMPLE OF EVILS OF SEX WORK & THE REDEMPTION NECESSARY IF THESE UNWEDDLED WOMEN WANTED TO SAVE THEIR SOULS.

MOSTLY DEPICTED BLONDE - REGULAR COLOR FOR PROSTITUTES TO DYE THEIR HAIR AT THE TIME - ASSOCIATED WITH SEX, BEAUTY & YOUTH. THE EMBODIMENT OF SIN THAT THE CATHOLIC CHURCH SAW AS WORTHY OF PUNISHMENT. WOMEN'S SEXUALITY WAS BEING ARTISTS COMMUNICATE ALL THAT SINFULNESS WHICH STILL PREDOMINANTLY MOVED WOMEN TO SAVE FOR CHURCH WALLS.

COVER HER IN THE SYMBOL OF HER SINS. SHE IS BOTH NAKED & COVERED.

THE HAIR PROTECTS HER BODY & MODESTY. LEGEND OF MAGDALENE AFTER HER DEATH SHE GAVE UP ALL HER POSSESSIONS INCLUDING HER CLOTHES TO LIVE IN THE DESERT AS A HERMIT. WHEN GOD SAW HER NAKED HE BLESSED HER WITH A Pelt of HAIR. AESTHETIC & SEXY PROBABLY CAUSED CONFUSION WITH ANOTHER EARLIER HAIRY MARY. SHE WAS ALSO A REPENTING PROSTITUTE WHICH WAS WHY SHE WAS ASSOCIATED WITH SIN. SHE WAS ASSOCIATED WITH SIN & A MIRACULOUS GOAT OF HAIR.



COVER HER IN THE SYMBOL OF HER SINS.



A HAIRSHIRT (OR CILICE) IS AN UNDERGARMENT TO INDUCE DISCOMFORT, AND THEREBY LEAD TO SPIRITUAL PURITY, SALVATION, OR ATONEMENT.

SHIRT MADE OF SACK CLOTH OR COARSE ANI SELF IMPOSED MORTIFICATION OF THE FLESH. REPENTANCE AS AN INSTRUMENT OF PENANCE IRRITATE THE SKIN; ADDITIONAL FEATURES IN WIRES OR TWIGS.

HAIR OF THE PENITENT MAGDALENE MIGHT INFLUENCED BY THE CATHOLIC HAIRSHIRT. CARMENT WOVEN FROM ANIMAL HAIR MOSTLY CAMEL - WORN AS A MEAN OF BODILY MORTIFICATION - NOT ONLY BY MEMBERS OF THE CLERGY BUT ALSO BY LAYPEOPLE AND EVEN UNDER THE ROBES OF THE WEALTHY - SKIN RASH KEEPING THEM FROM WEARING THEM.

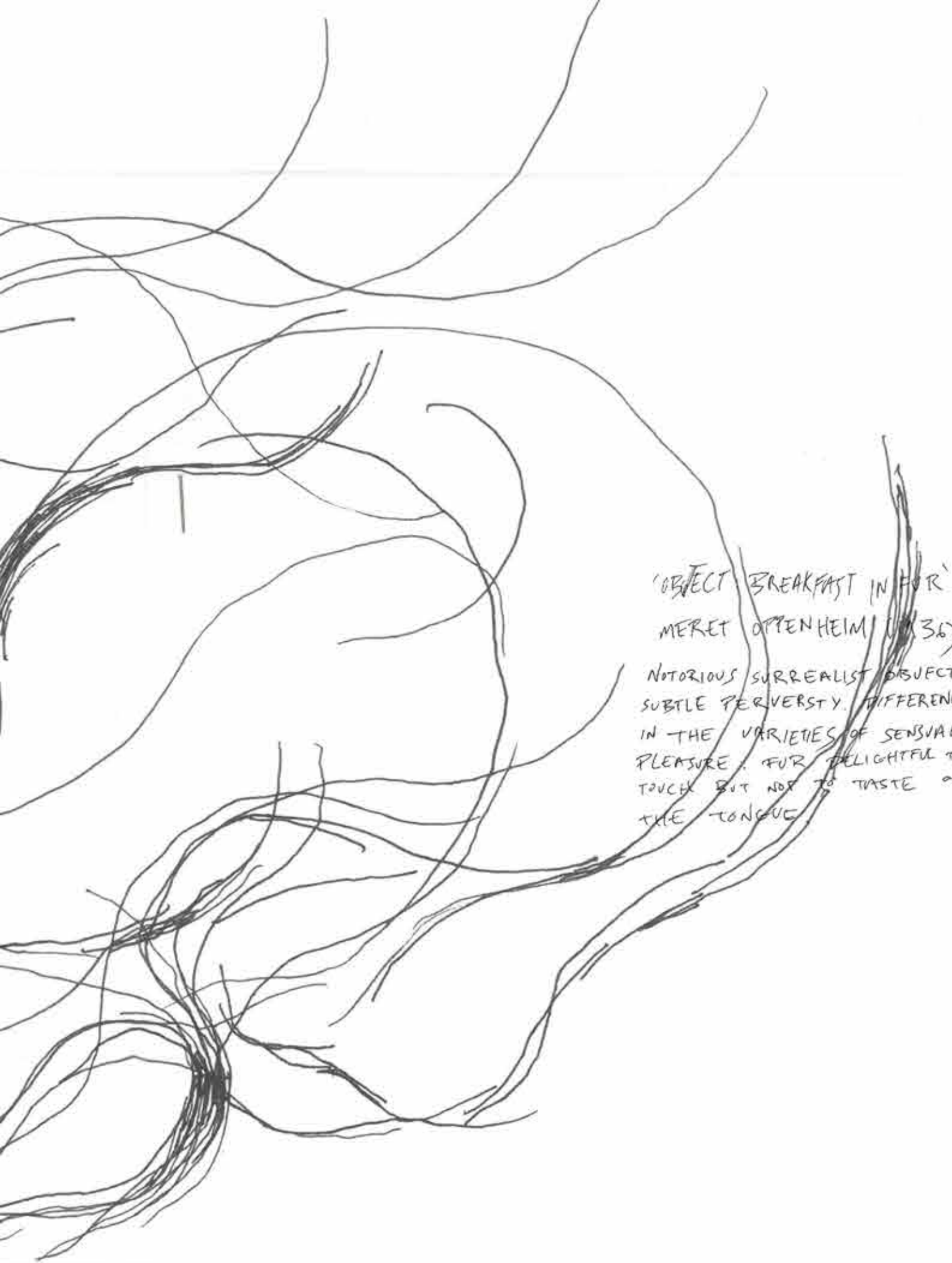
Penitent Magdalene might also have been influenced by the Catholic hair suit surreal looking. It was worn by the most other goat of camel - worn as a mean of bodily mortification & penance, not only by members of the clergy but also by laypeople and even under the splendid robes of royalty - skin - keeping people modest.



41. Current knowledge on the distribution of the diatom species found on Holy Mary Magdalene's hair.

Most features of the valves observed on the hair of Holy Mary Magdalene advocate for identification as *Navicula disseminatopunctatus* (Houk et al. 2010) (Houk et al. 2010; e.g. simple internal structure, star-shaped flat face (h), hyaline ring between the marginal cheilopores (Figure 1). *Lindavia* are morphologically closely related (Nakov et al. 2010).

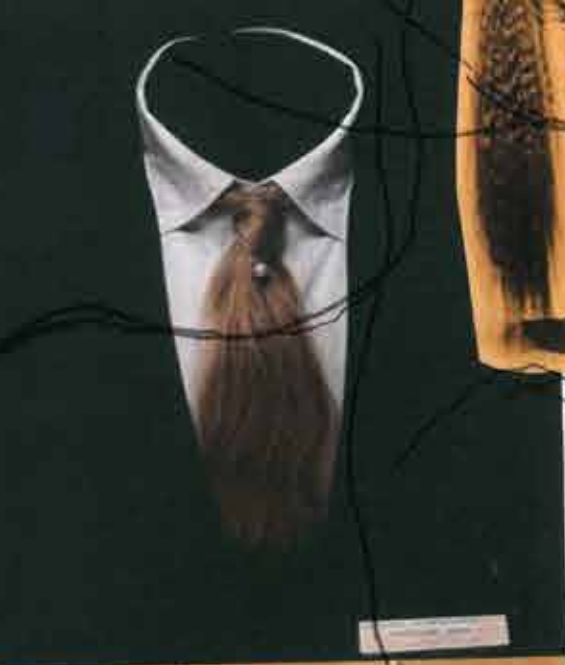
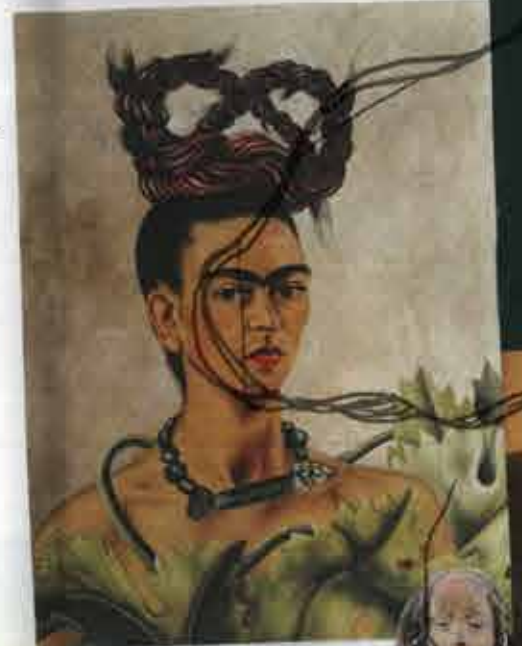




'OBJECT BREAKFAST IN FOR' -
MERET OPPENHEIM (1936):
NOTORIOUS SURREALIST OBJECT -
SUBTLE PERVERSE DIFFERENCES
IN THE VARIETIES OF SENSUAL
PLEASURE. FOR DELIGHTFUL TO
TOUCH BUT NOT TO TASTE ON
THE TONGUE



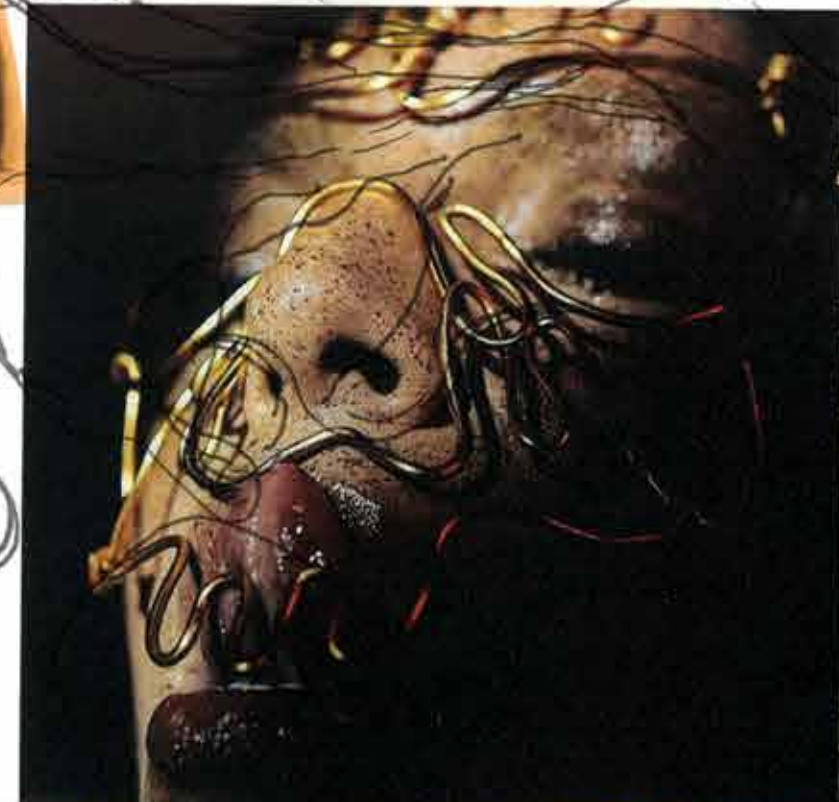
'SELF PORTRAIT
WITH BRAID' -
FRIDA KAHLO
(1941)



'MASCULIN FEMMIN' -
MIMI PARANT (1959)



THE SKULL OF MARY MAGDALENE
RESTS IN THE CRYPT OF THE BASILIQUE
SAINTE MARIE MADELEINE
(A MASSIVE GOTHIC BASILICA WHOSE CONSTRUCTION
BEGAN IN 1295).



'LOOP MY LOOP' -
HELEN CADNICK
(1971)

Hairy Mary

A girl with an extremely hairy body. Specifically the face and/or armpits. A Hairy Mary is also a woman who has an extremely hairy ass. Or worse. Hairy Marys tend to travel in packs and occasionally think that it is okay to publicly expose themselves by wearing tanktops.

On first sight it looked as though *Earthheiter's* hair was flowing over her shoulder. She then tossed her *hair back*, exposing herself as a Hairy Mary, and displayed her beautiful *armpit hair*.

By (TalentSuite) December 10, 2008



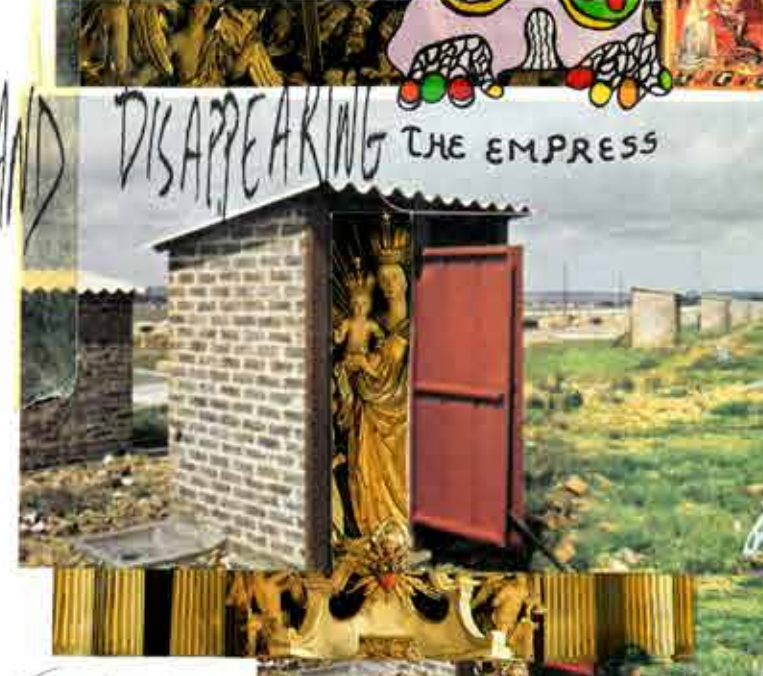
LOUISE BOURGEOIS: FEMME (2006)

"ALL MOTHER GODDESSES SPIN AND WEAVE ...
EVERYTHING THAT COMES OUT OF THEM:

THEY WEAVE THE WORLD TAPESTRY OUT OF GENESIS
AND DEMISE, THREADS APPEARING AND DISAPPEARING III
RHYTHMICALLY. (HELEN DINER, MOTHERS & AMAZONS)

AND DEMISE, THREADS APPEARING AND DISAPPEARING
RHYTHMICALLY. (HELEN DINER, MOTHERS & AMAZONS)

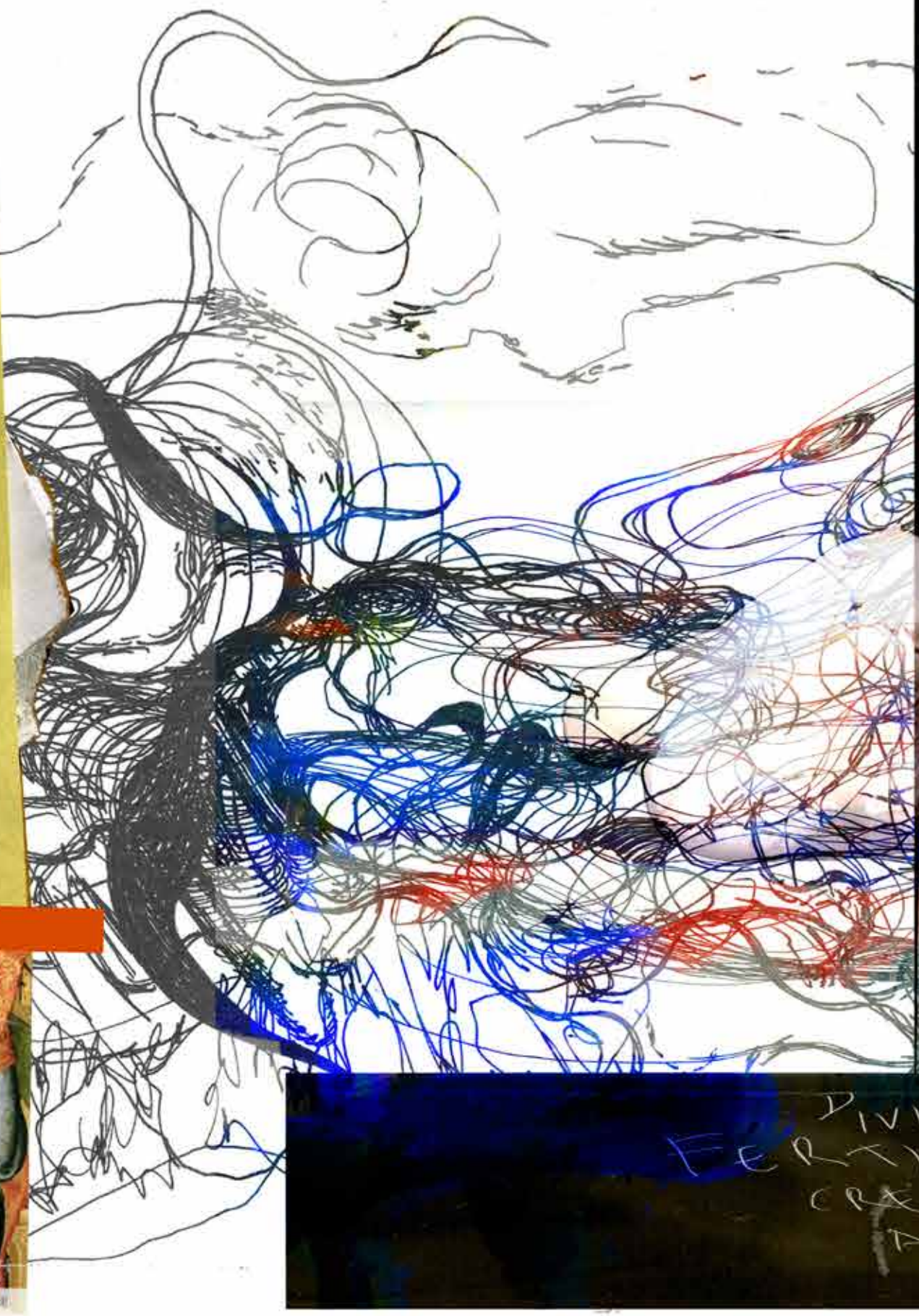
CONSCIOUSNESS CONNECTED
TO INTUITION, FEELING,
NURTURING, RECEPTIVITY,
AND INTERCONNECTEDNESS



THE MARIANNA
THE VIRGIN MARY
THE DIVINE MOTHER
THE IDEAL MOTHER
ARCHETYPE



View of the Angel, 15th c., by Master Bertram of Minden. Close-up: The Madonna is clearly knitting in the corner!



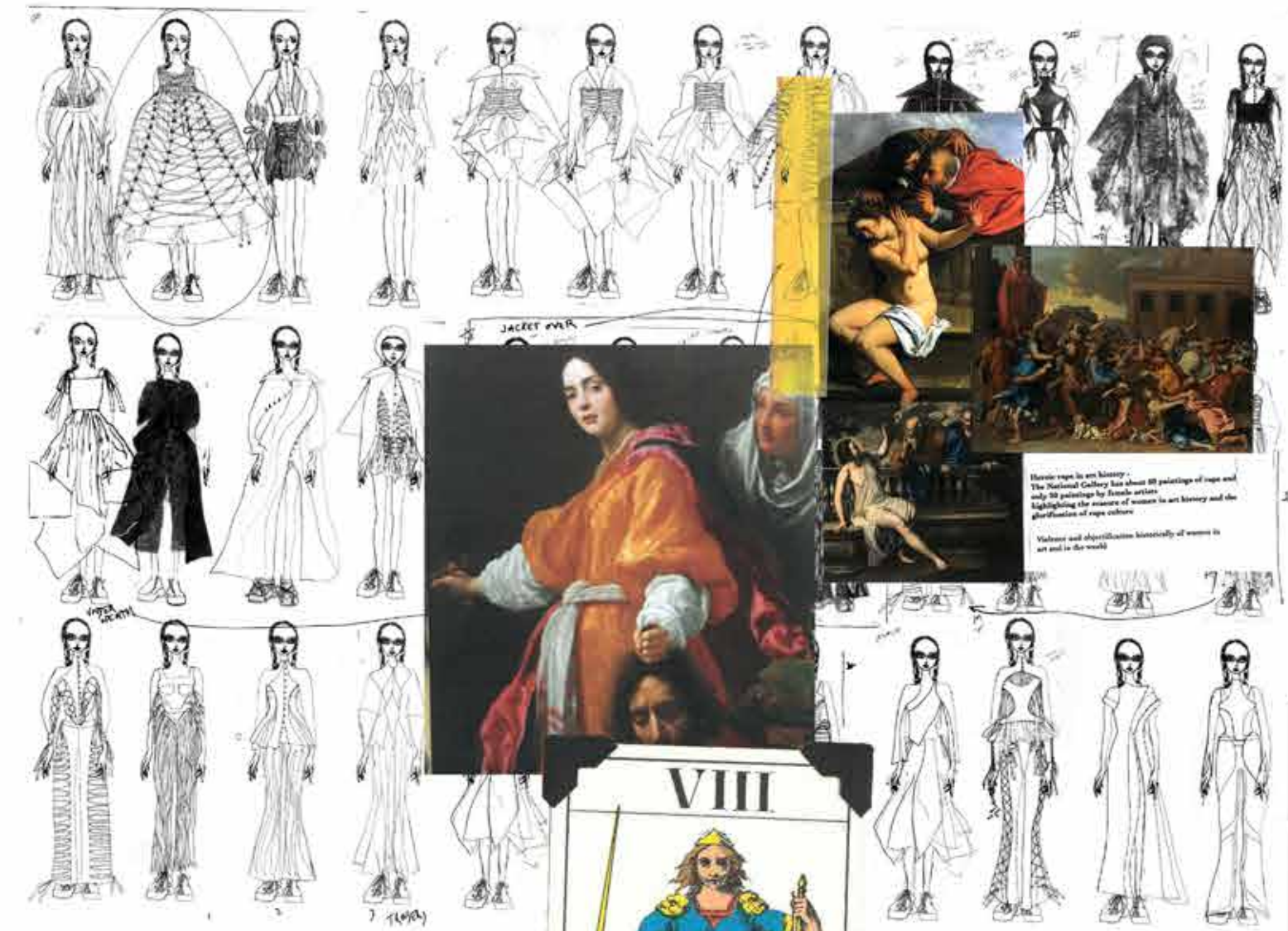
DIVINE FEMWINE POWER
FERTILITY
CREATIVITY
ABUNDANCE
COSMIC MOTHER

The Spider is an ode to my mother.
She was my best friend.
Like a spider, my mother was a weaver...
Like spiders, my mother was very clever.
Spiders are friendly creatures that eat

mosquitoes. We know that mosquitoes
spread diseases and are therefore unwanted.
So, spiders are helpful and protective,
just like my mother.

Louise Bourgeois

JUDITH SLAYING HOLOFERNES



ARTEMISIA GENTILESCHI (1632)



SILHOUETTE

PANELLING
FOR STITCHING
DETAIL

LA PAPESSE

STRUCTURE GEOMETRIC
SEGMENTS

STAIN
GLASS
ILLUMINATED

FRAMED SERIES
(CHARACTERS) LIKE
TAROT.

ARTICULATING FEMINIST
CONTEMPORARIES
OTHER WOMEN THROUGHOUT HISTORY
BRANDED & HYPERREAL
NICANICE
DETAINED IN NUMBER 1

UNBOTHERED BY
PATRIARCHY
OR IMPRISONED
BY PATRIARCHY

SPIRITUALLY & PHYSICALLY
CONTAINED OR LIBERATED

INNER GARMENT -
LAYERED WITH LACED UP
CORSET PIECE
SAME CONSTRUCTION
SMALLER SCALE
GATHERED VOLUME

d1 HEADWEAR DEVELOPMENT
ADD CROWN/CHEST
AREA DETAIL

d2

COLLAR PROTOTYPE
CREATED FROM
SINGLE SQUARE
FOLDED BACK
IDEAL SHAPE.

SPIKES X8
KNIT/MOHAIR CROCHET
DETAIL.

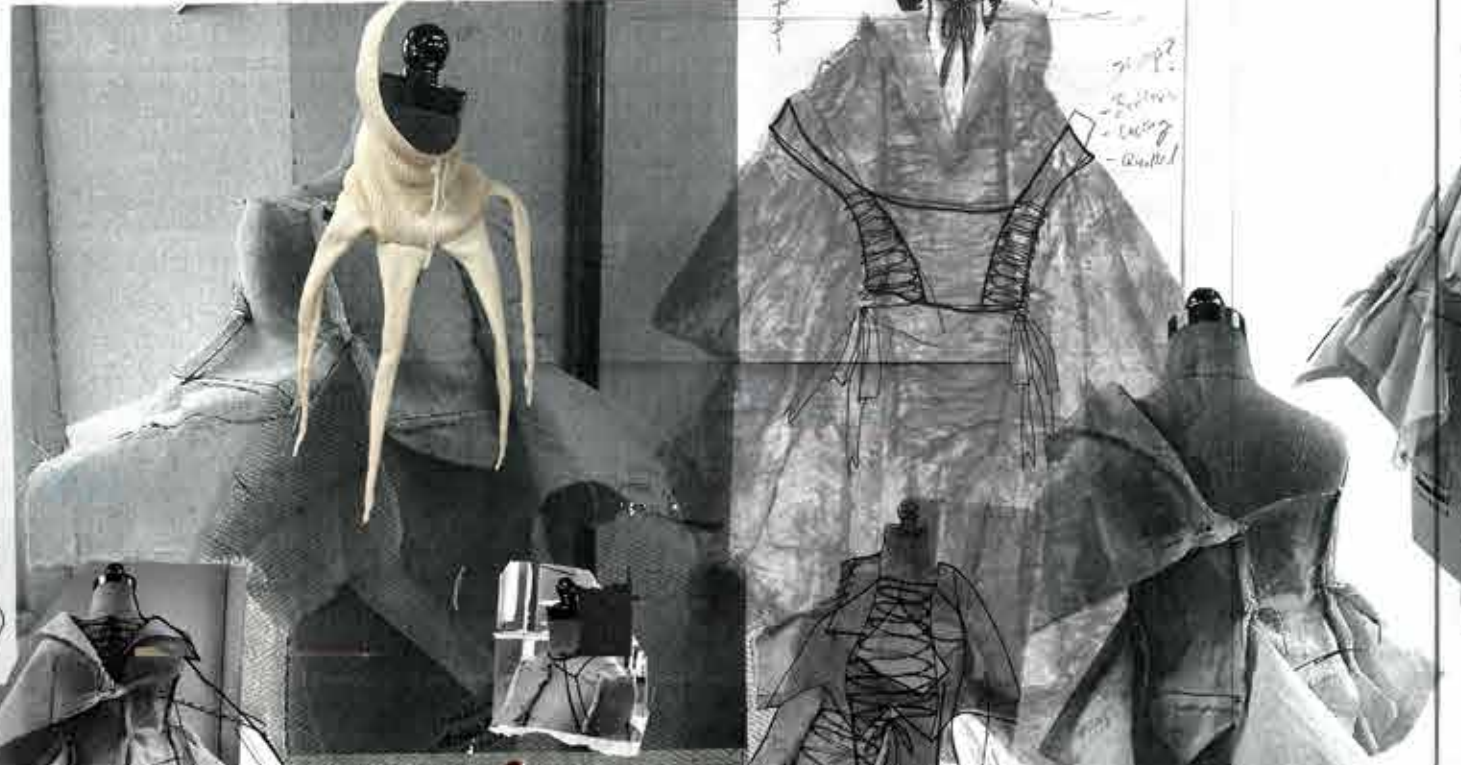
Development
Development
Development
Development
Development

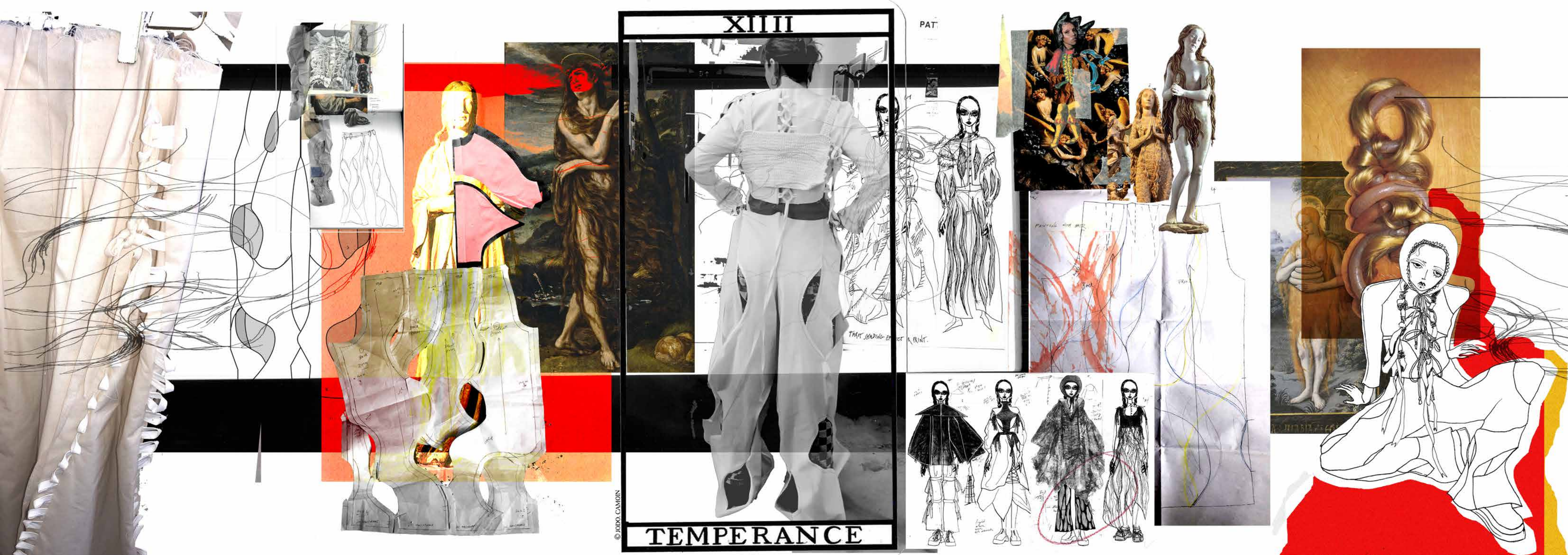




PRINTING FOR ME

INSERT SQUARE FOR EXPANSION (ACROSS CHEST)





XIII

PAT

TEMPERANCE

© JORDO CAMOIN



WARM GLOW
WIND

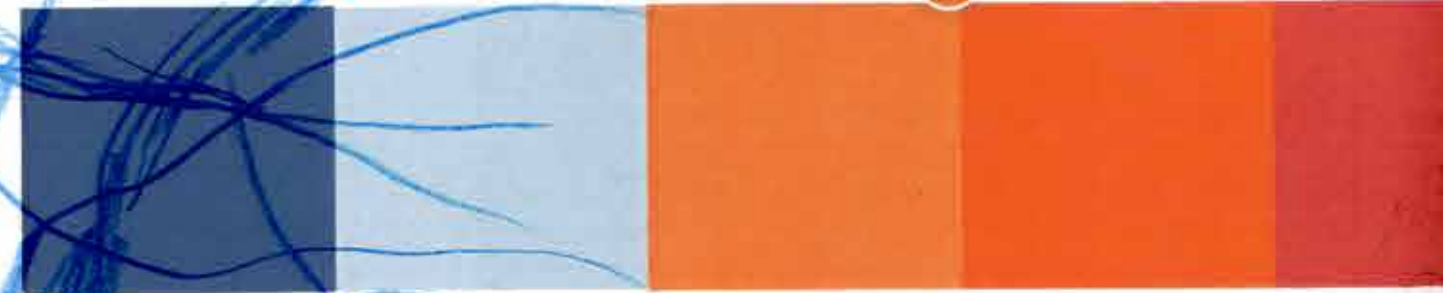
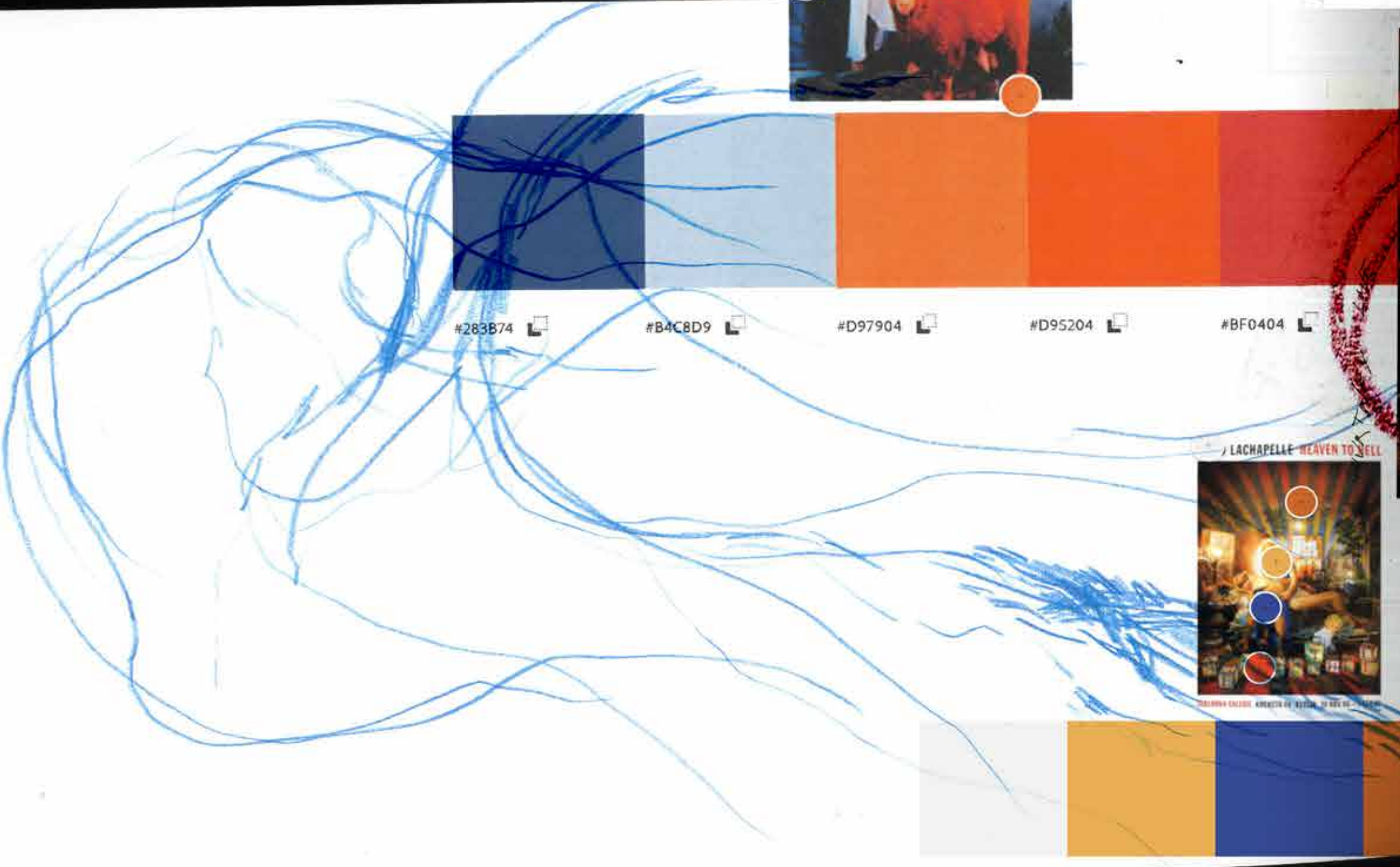
COLOUR
PALETTE



BLACK
ORANGE
YELLOW
RED
ELECTRIC
BLUE



KINDER
WHORE
ANGELIC



#283B74 #B4C8D9 #D97904 #D95204 #BF0404

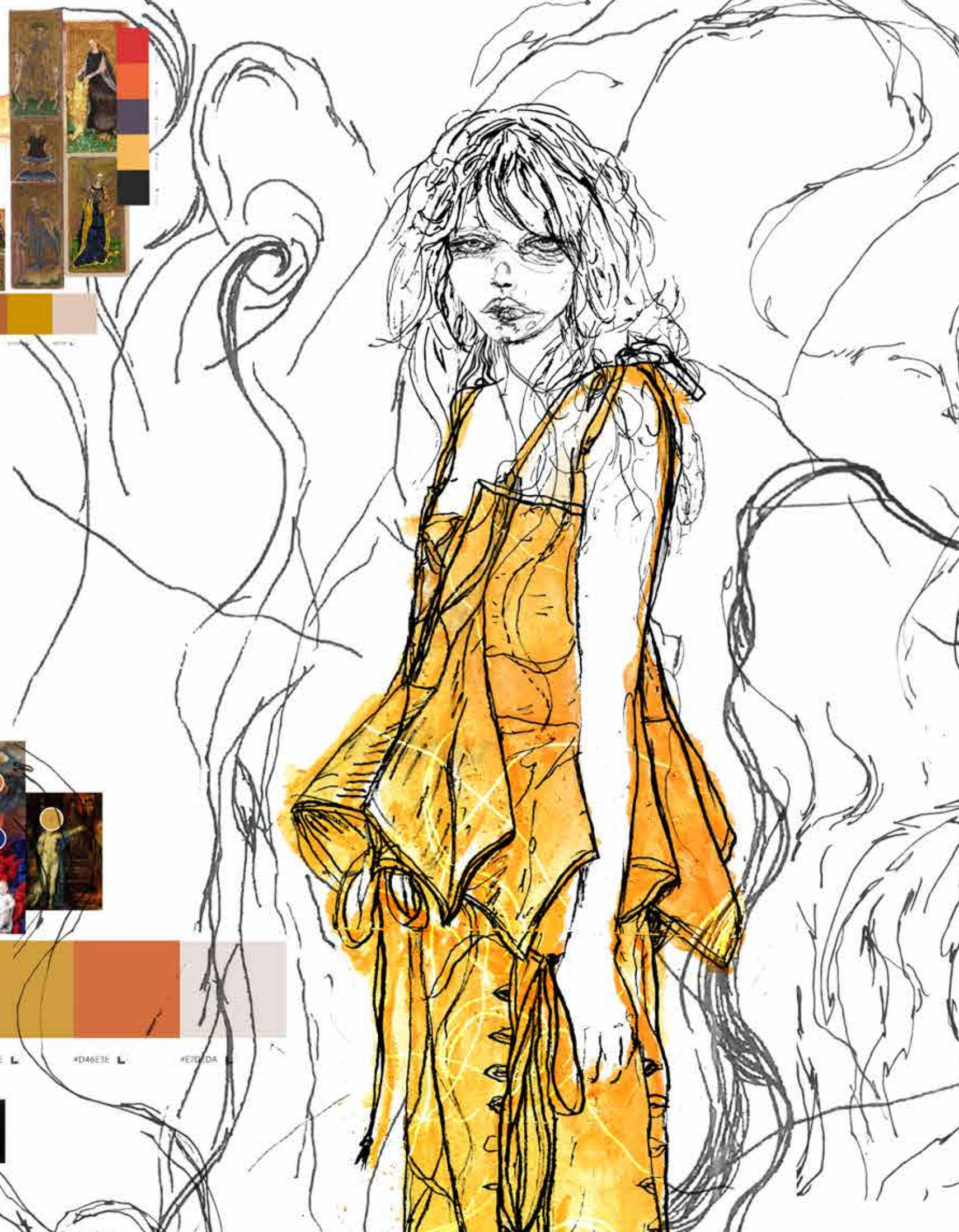


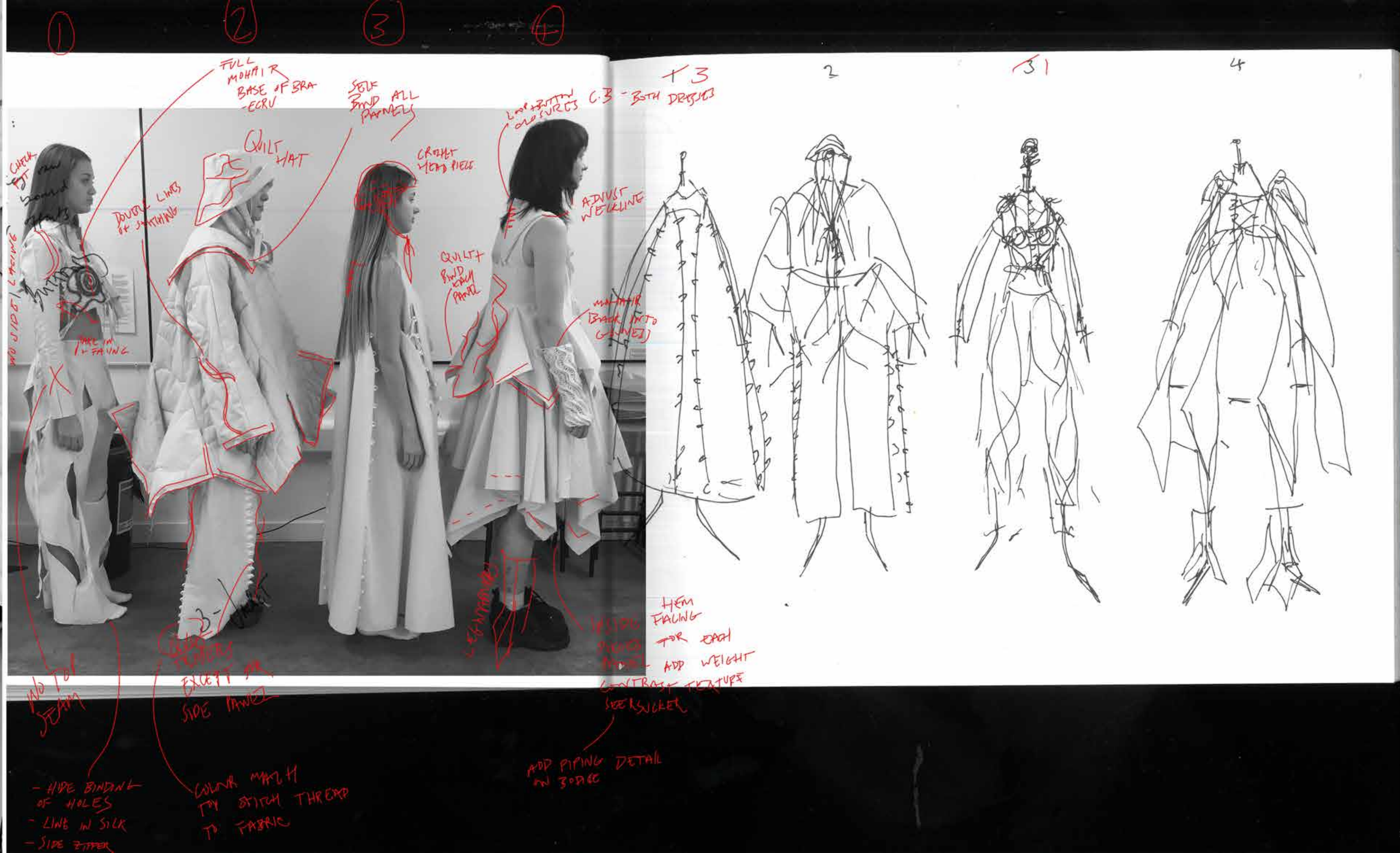
LACHAPPELLE HEAVEN TO SELL

THE MADONNA
THE MAGDALENE
THE WITCH



#F3828 #192773 #6F9D5E #D46E5E #E7E7DA







MATERIALS / PRODUCTION CONSIDERATIONS - ALL NATURAL FIBRES
 BIODEGRADABLE /
 LARGE PANELS: EASE OF RECYCLING
 REINVENTING AT END OF LIFE OF THE GARMENT.

100% COTTON
 - CLOTH HOUSE

MAKE STRONG CAPABILITY
 + CAPACITY FOR VARYING
 OR FLUCTUATING SIZE WEARERS

ADJUSTABLE TIES FRONT + BACK
 FITS A RANGE OF TIGHTNESSES
 - FREEDOM FOR EXPANSION + COMFORT

100% ENGLISH WOOL
 - CLOTH HOUSE
 MADE IN ENGLAND

100% COTTON
 - MERCHANT + MILLS

RE-INVENTED FABRIC -
 MY MUM'S OLD UNUSED
 CURTAINS

100% SILK

PHYSICAL COMFORT
 SENSE OF SAFETY
 + DIGNITY

NOSTALGIA
 INTRINSIC
 EMOTIONAL
 VALUE

NATURAL
 DYEING OF
 WOOL KNIT
 ACCESSORIES

WITH ANNATTO
 SEEDS

NATURALLY DYED

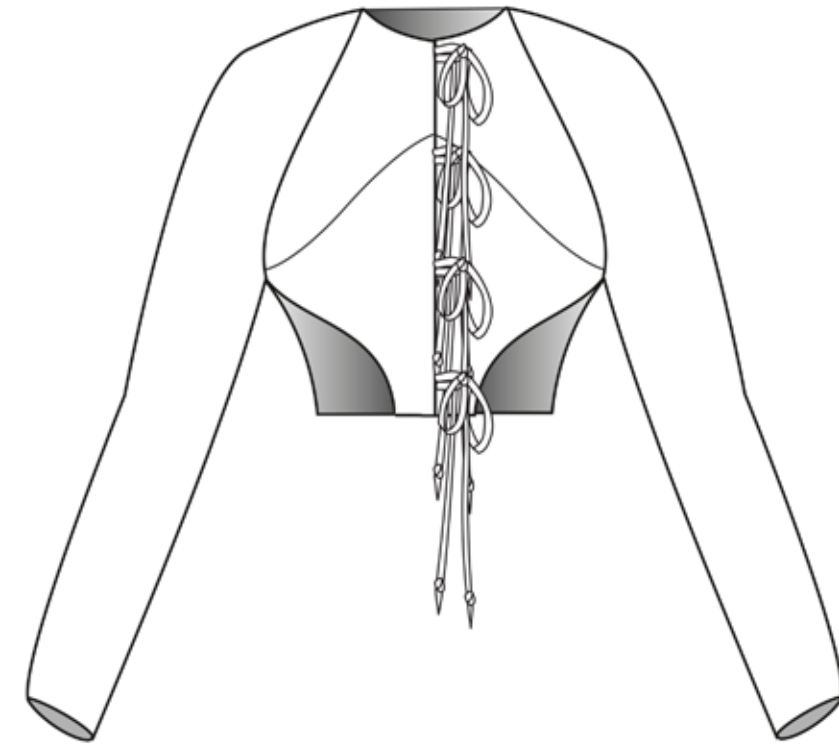
REDUCED WASTE IN
 PATTERN CUTTING
 ZERO WASTE SQUARES
 → VOLUME

TROUSERS CAN BE STYLED AS A
 LAYERING PIECE.

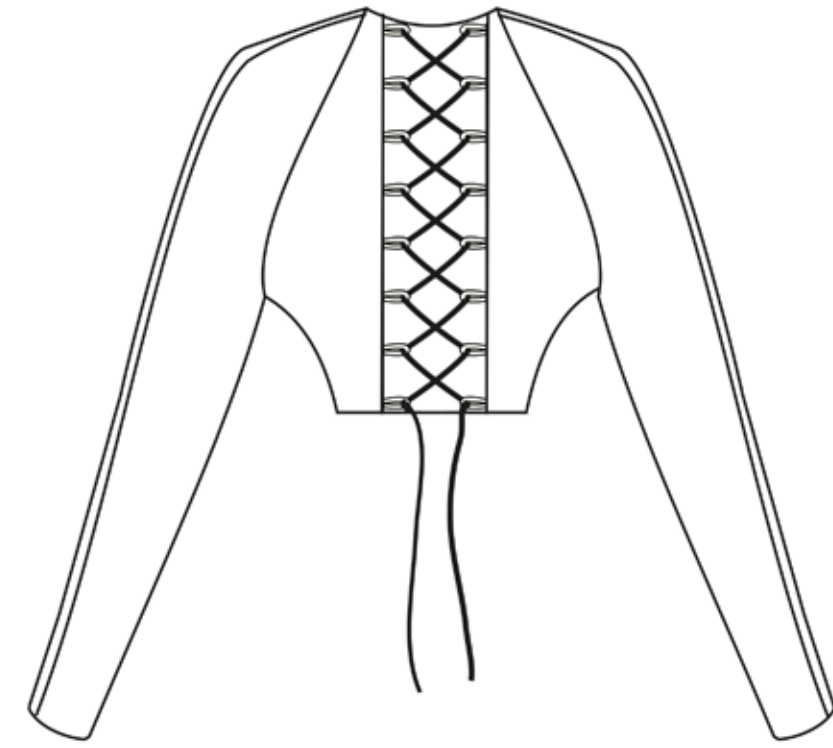
ADJUSTABLE SILHOUETTE - FITS A RANGE OF SIZING
 THROUGH LOOPS + LACING WITH TIES. CHANGE SILHOUETTE COMPATIBILITY

LOOPS
 ADJUSTABLE DOWN ENTIRE
 LENGTH OF SIDE FRONTS/BACK
 SEAMS: UNQUILTED FABRIC
 PANEL BETWEEN - CAN FIT
 RANGE OF MEASUREMENTS





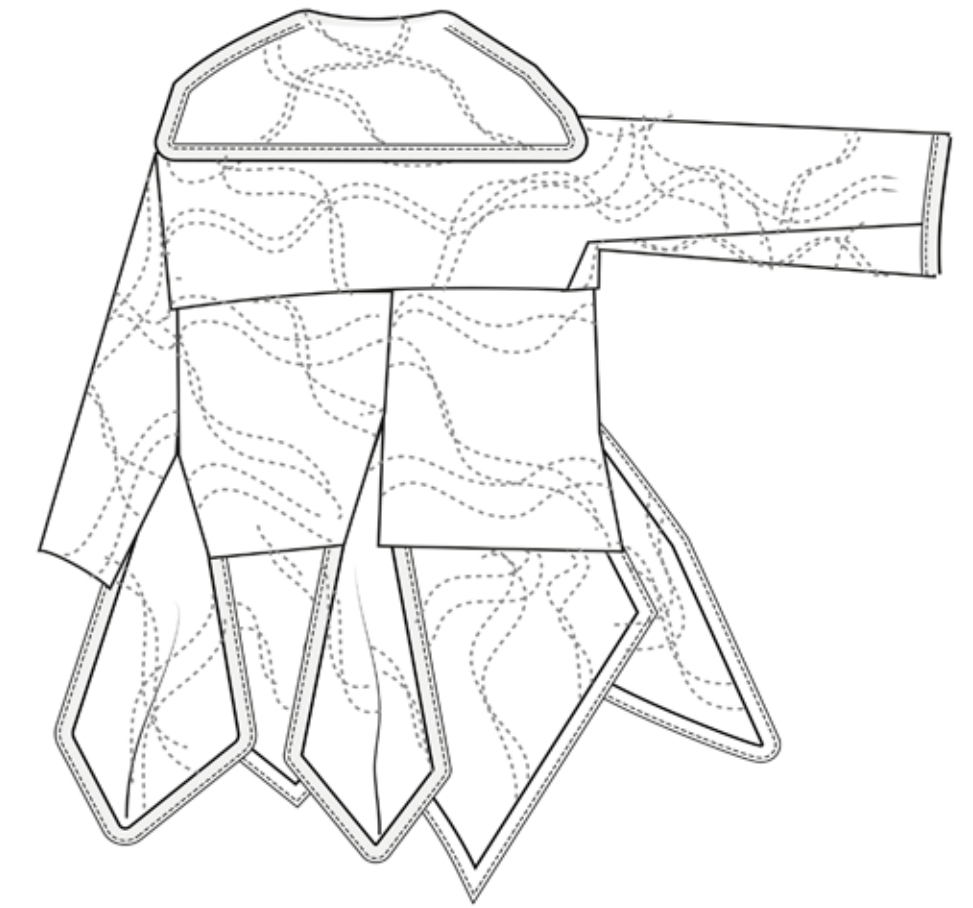
FRONT



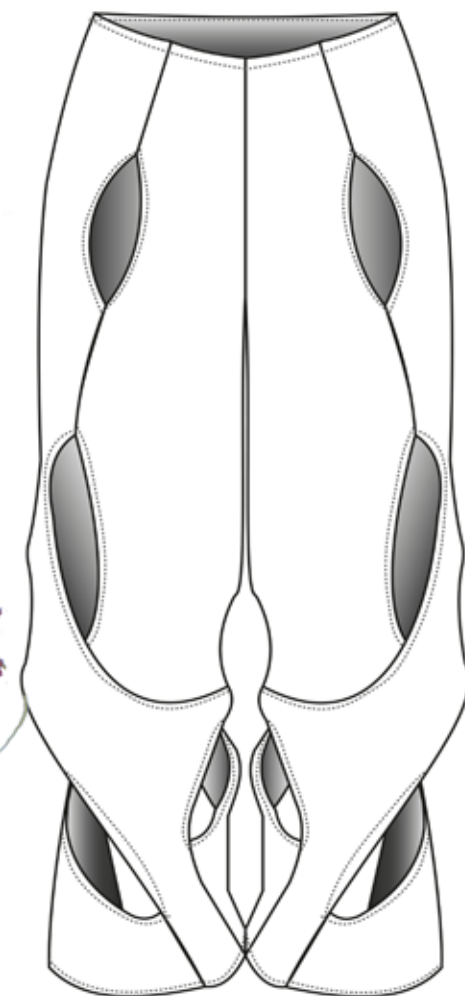
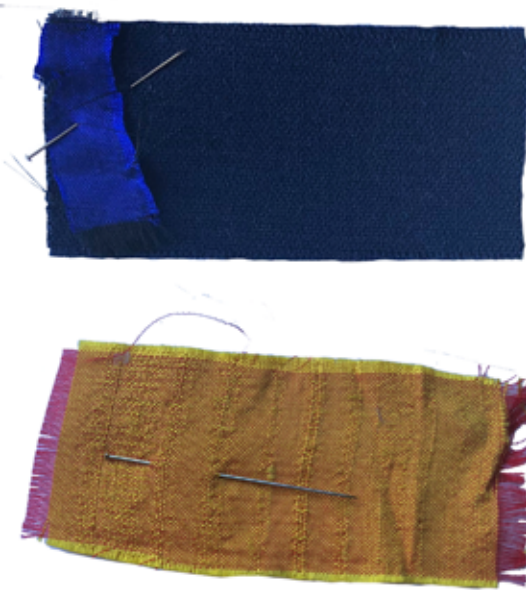
BACK



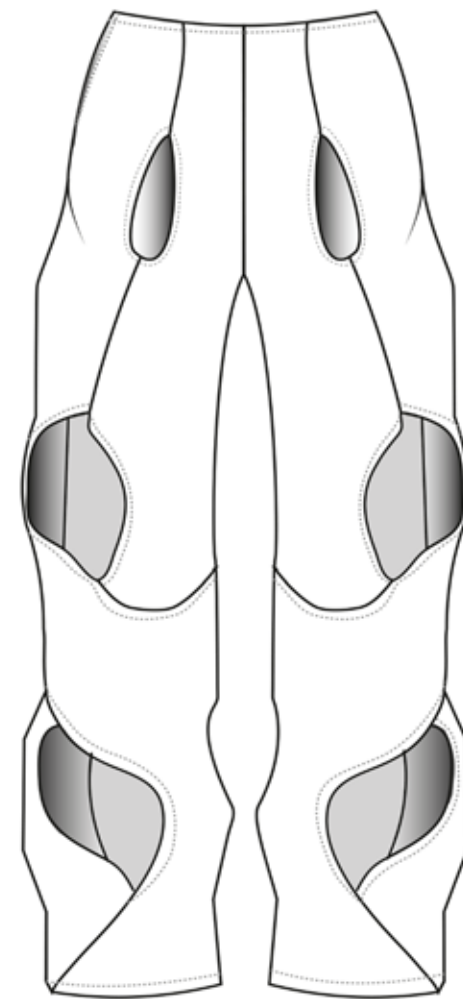
FRONT



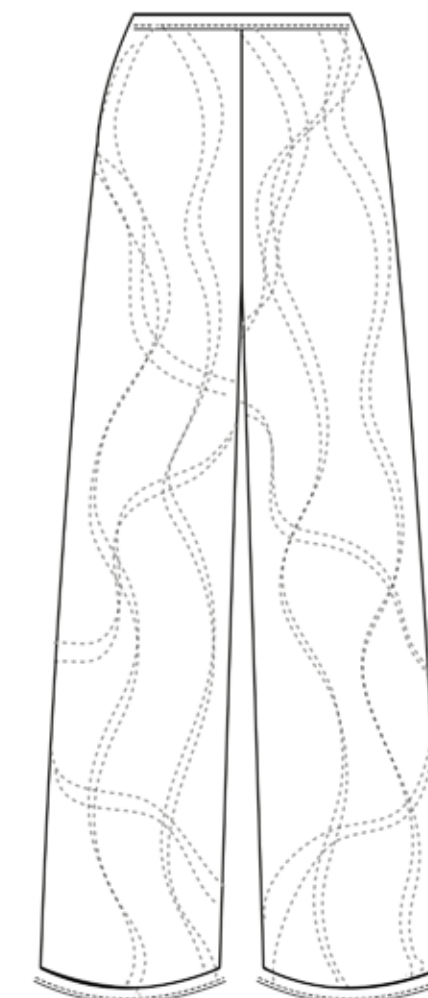
BACK



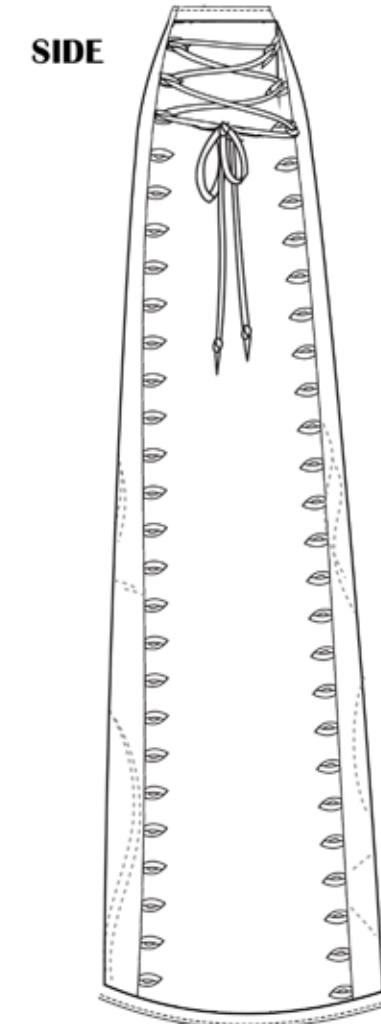
FRONT



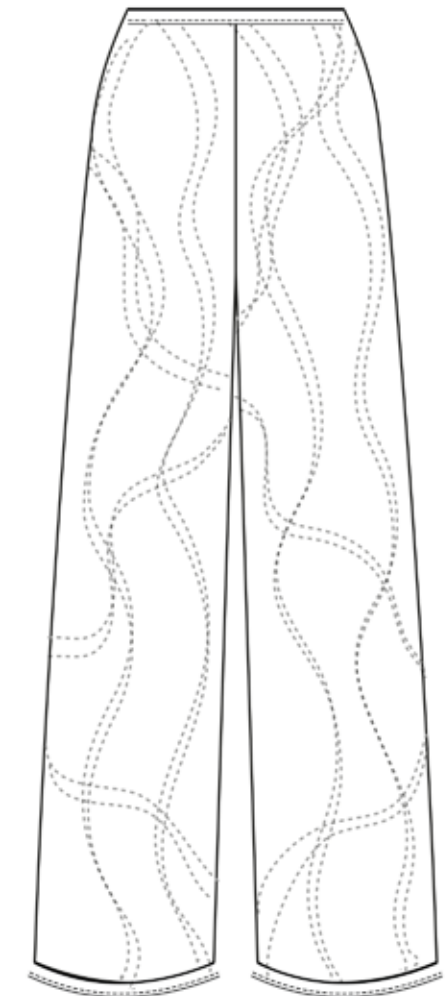
BACK



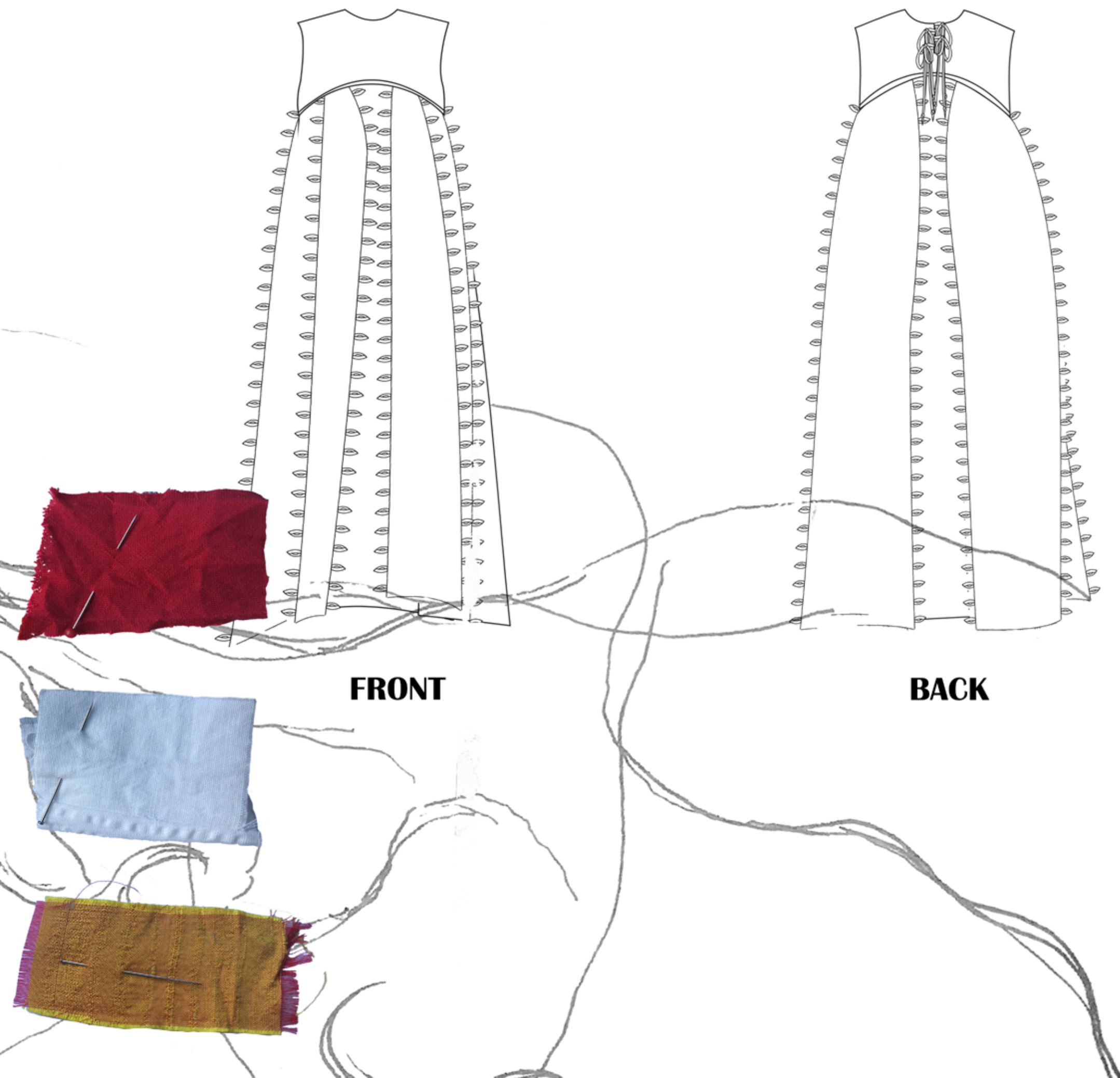
FRONT



SIDE

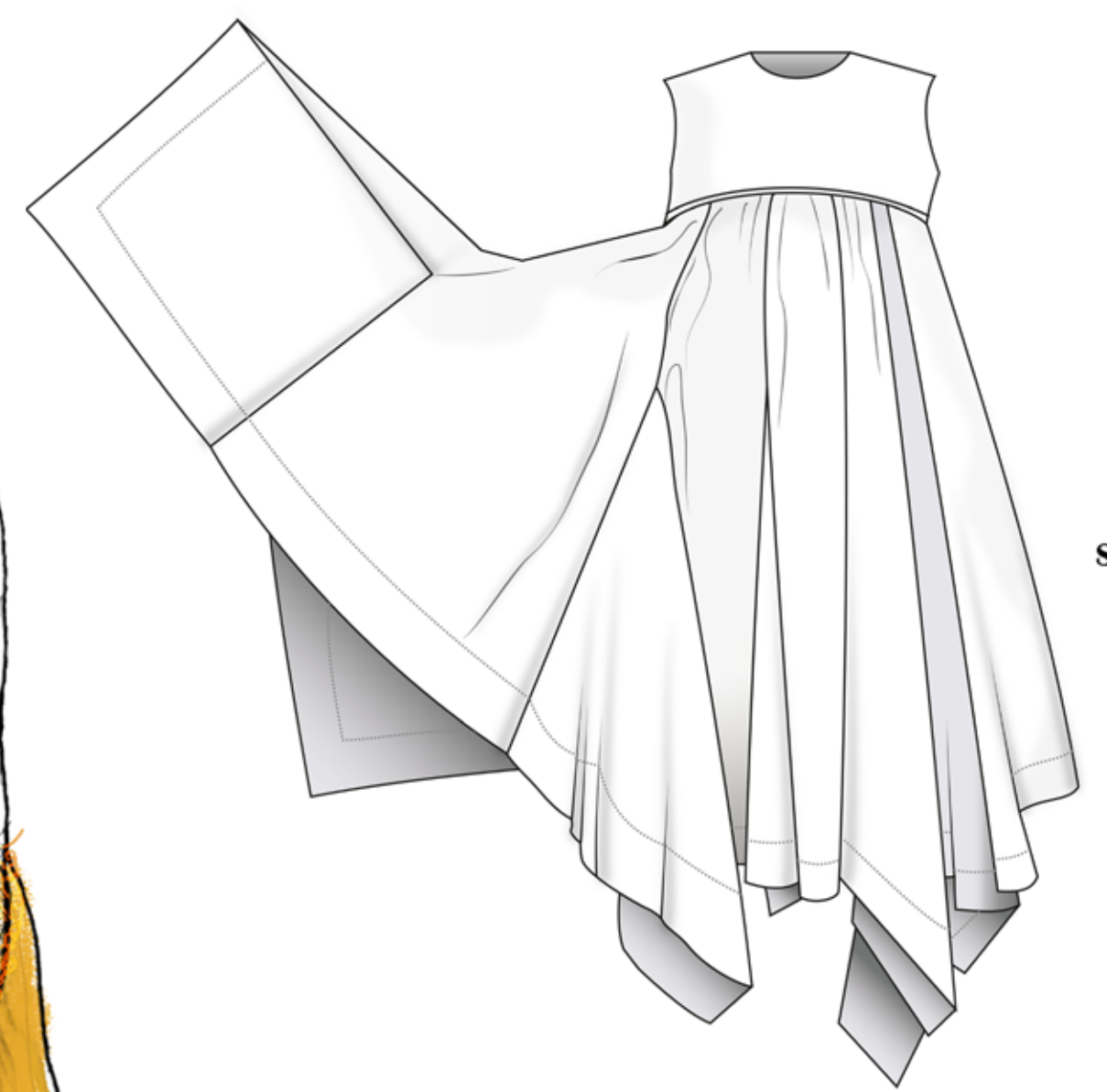
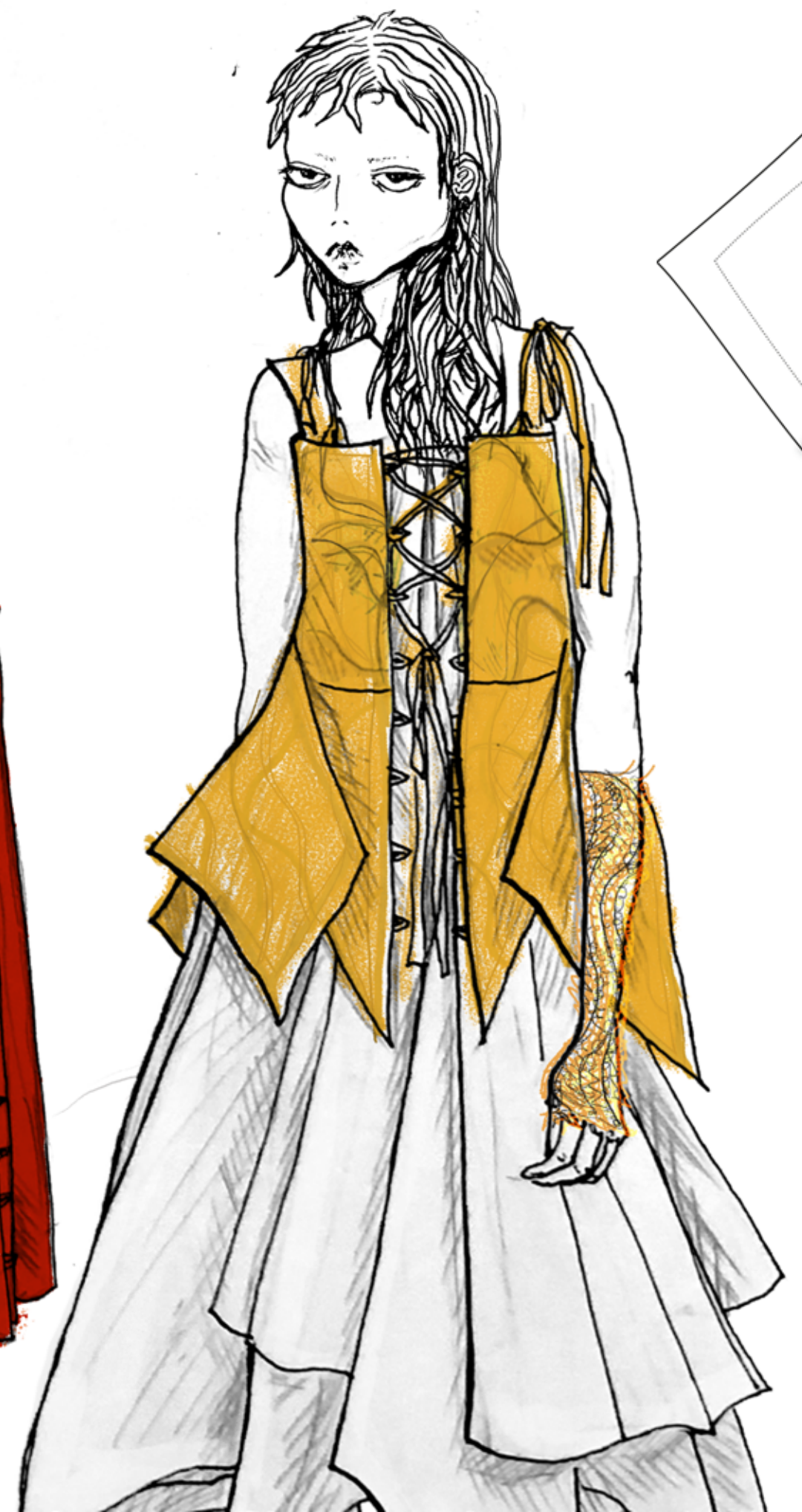
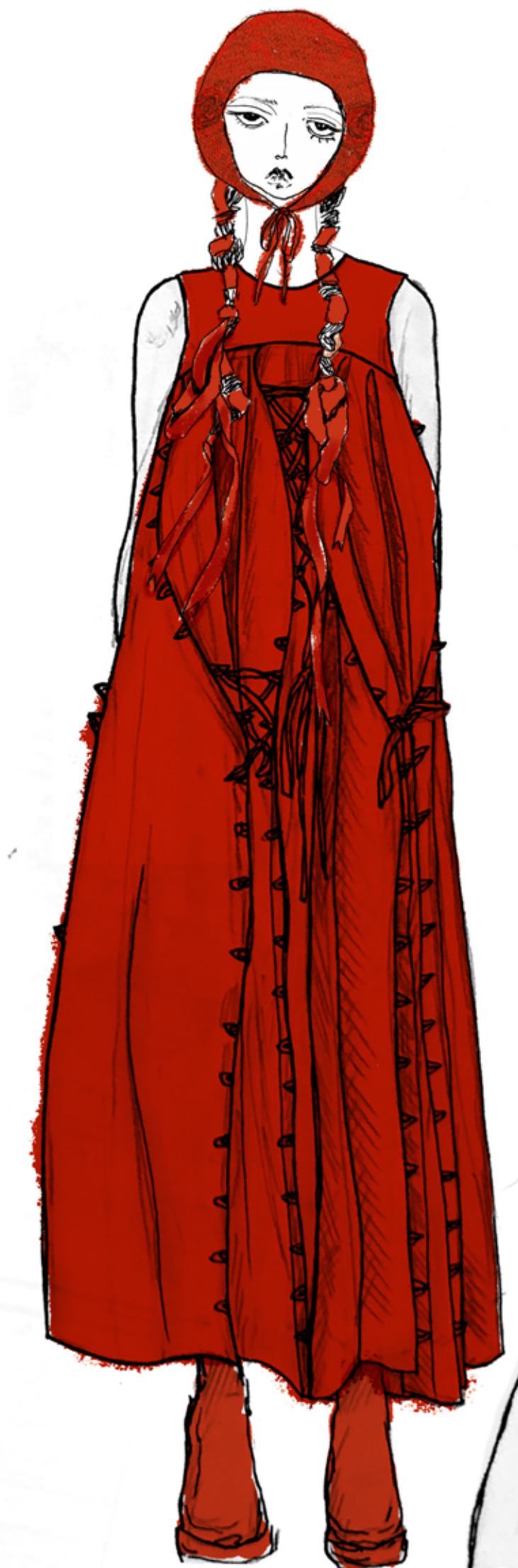


BACK



FRONT

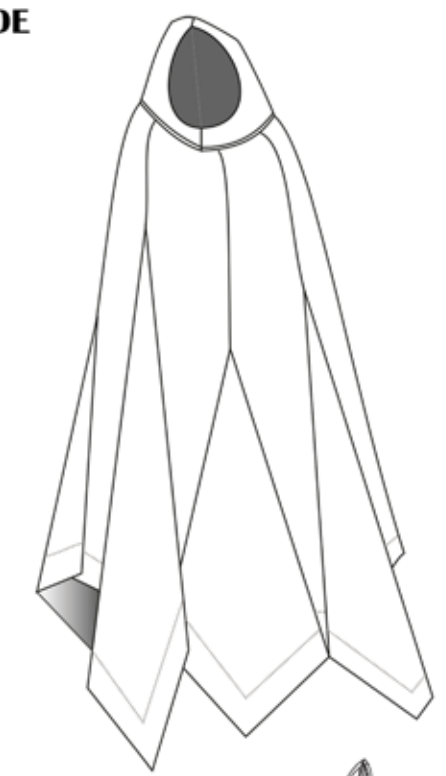
BACK



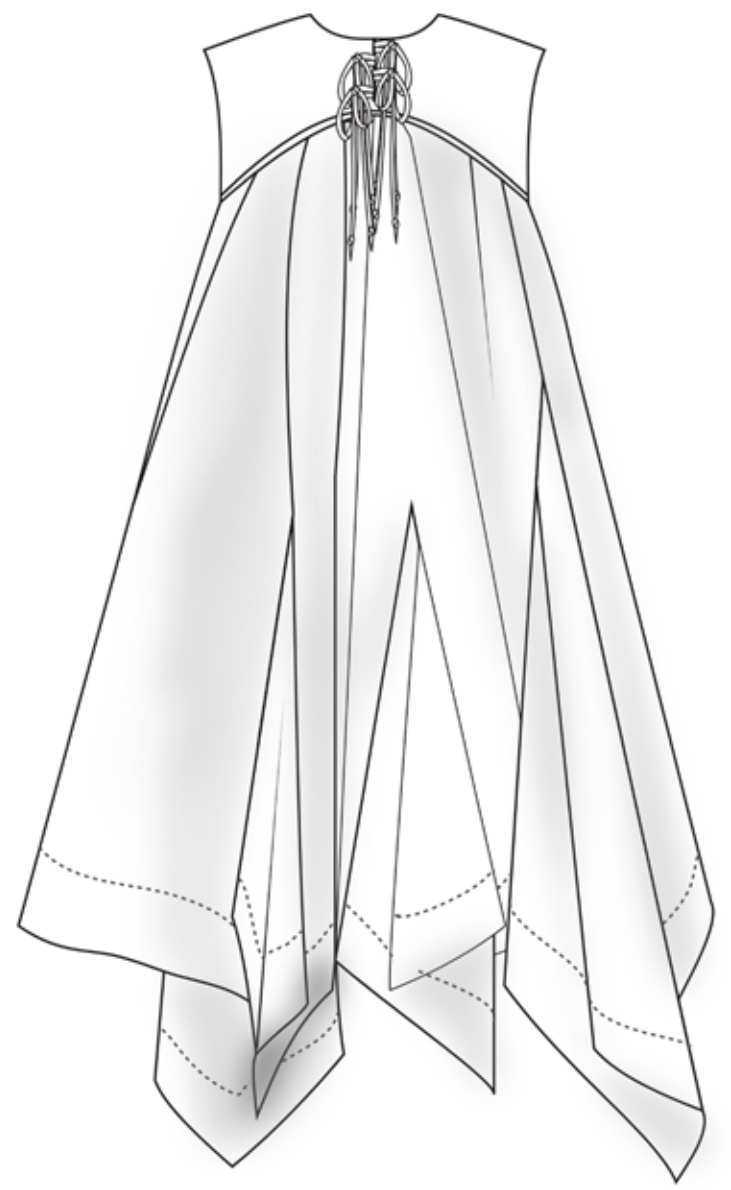
FRONT



RELAXED FRONT



SIDE



BACK

