



## ‘A Man Marr’d’

Amy Powell

‘A Man Marr’d’ is a Menswear collection inspired by an avid love of history & the desire to share stories of past lives in a contemporary space. The initial inspiration and research stems from a personal collection piece, a Victorian-era lace wedding veil. Amongst the personal collection of antique fashion items, 3 wedding veils, dating back to the late Victorian time period, were chosen to inspire the story.

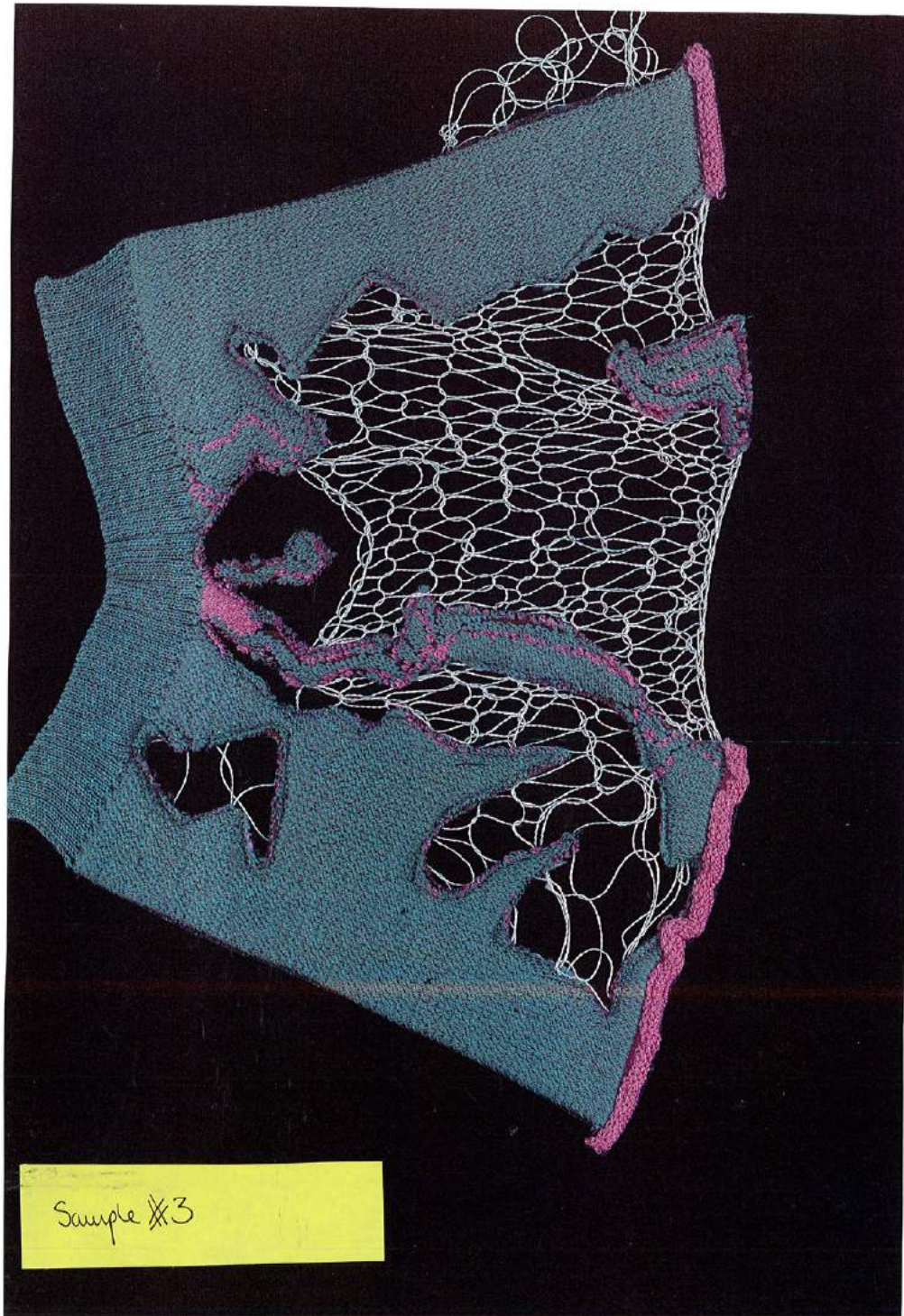
These veils, a mixture of hand stitched and machine stitched craftsmanship, reveal the stories of weddings of this era and the common practise of arranged marriages and ceremonies. This topic allowed for the exploration of arranged marriages as well as the relevant perspectives as often they are viewed from the bride’s perspective. As a menswear designer with male muses, this collection represents the wedding from the male perspective. Using historical references as well as modern influences and muses, this collection tells a story of disobedience, the story of an unwanted wedding and its aftermath for the unruly and unwilling groom.





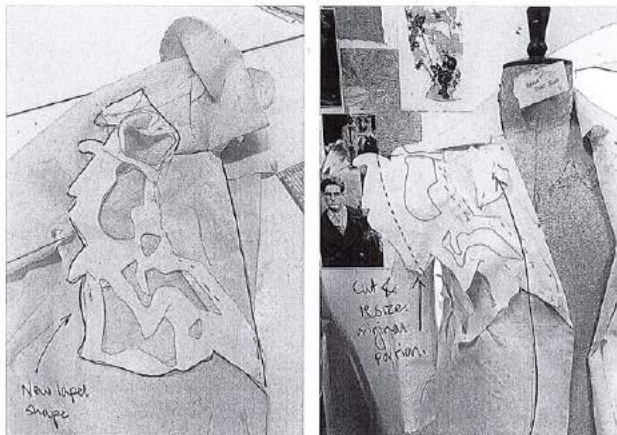


Sample # 2



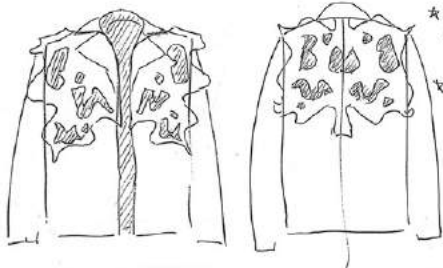
Sample #3

①



Additional cuts.

Pattern Plan: DRAFT 1



\* Symmetrical structure  
 will reshape lapel detail -  
 \* figure out the attachment  
 on the back.

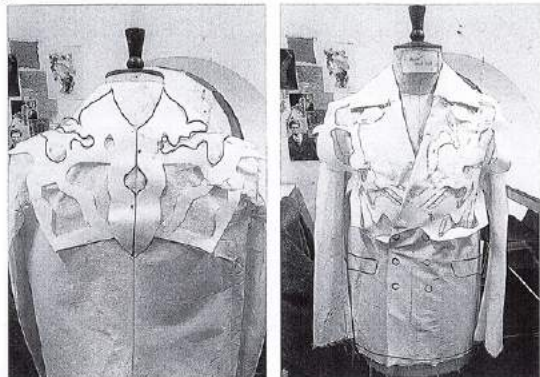
②



Building of the Structure.

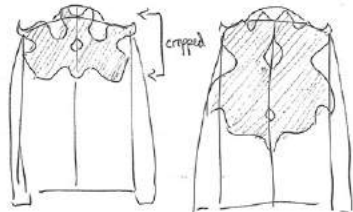
\* Figure out shape before considering lapel building

③

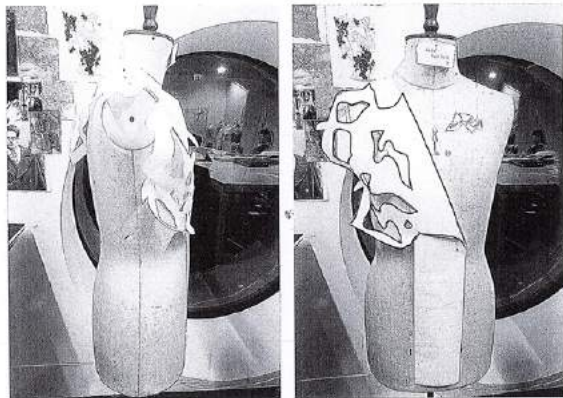


PINNED & TAPED VERSION OF THE LAPEL

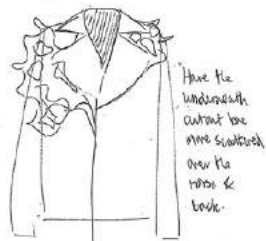
\* Overall body may be cropped, plus pockets into flap pockets.  
 \* Maybe make the neckline a deeper plunge?



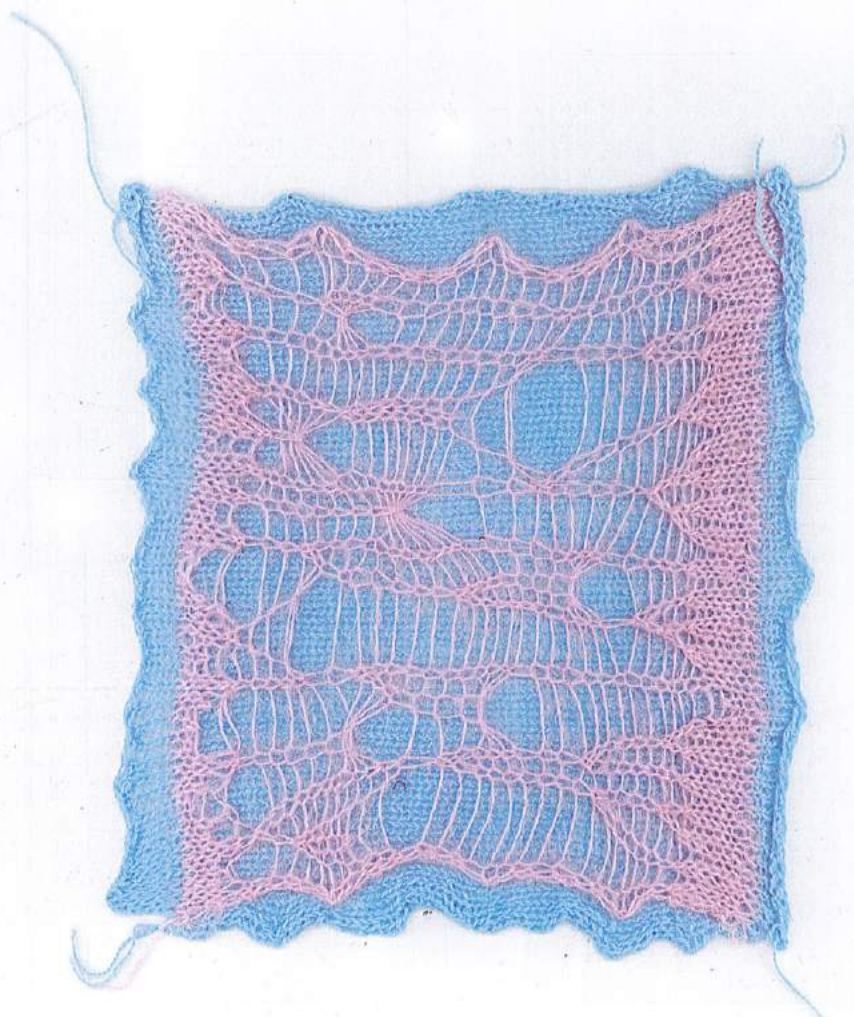
④



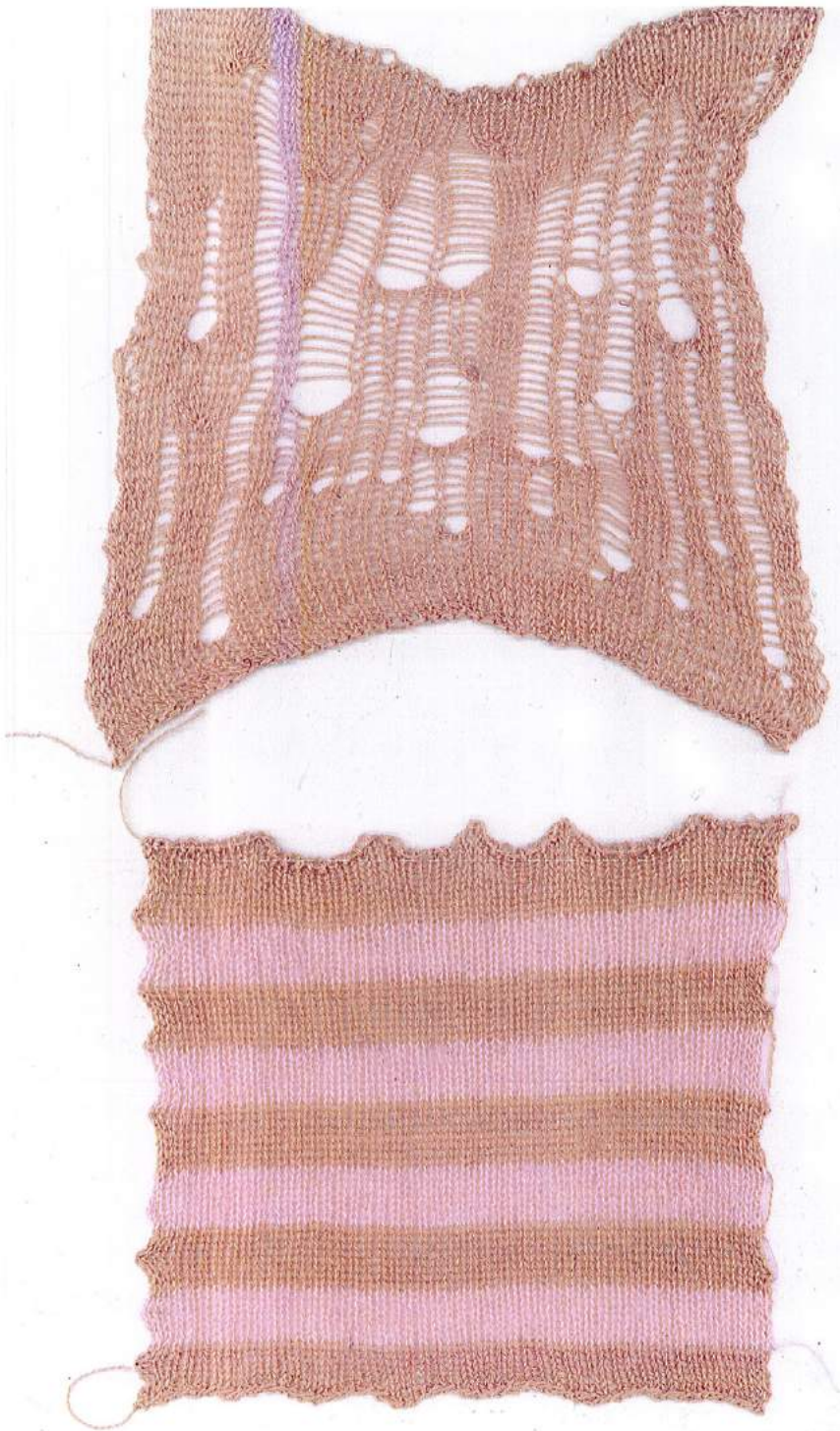
Originally symmetrical, but need to try an  
 asymmetrical but still all-in-one lapel piece.  
 ↳ Have the design 'fade' as it comes  
 around the left side.



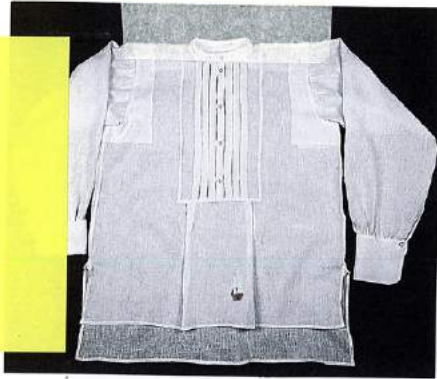
Have the  
 underdepth  
 cutout be  
 more scattered  
 over the  
 whole of  
 back.



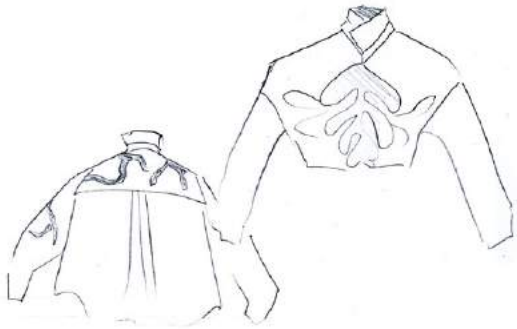
Sample \* 4.



Print  
SAMPLE



short sleeve  
Black shirt with  
hanging / trailing  
textile pieces -  
applied on in  
contrast thread.



Sample #1



Cut-out Shorts.

- \* Good positioning of cut outs & shape.
- \* Maybe test in knit or other biased materials.
- \* Lots of top stitching?

Knit Jumper Fitting.

- ↳ Double layer proportion is good.
- ↳ Keep colours & yarn types. bring out the main effect.
- ↳ Change neckline to maroon, rib it so it shrinks to tighter fit.

Tailored Jacket Back

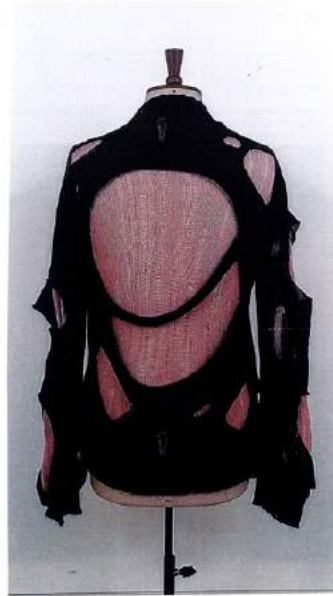
- \* Cut-out position is good - add elements of asymmetry.
- \* Metallic leather?

- ↳ Sleeve length, extend or not or cropped?
- ↳ Fluffy!! on wrists & waistband.

- \* Lengthen sleeves
- ↳ Cuff or tailored pocket?
- \* Cut outs on sleeve head and bodice.



13 Layered jumper.



Double layer w/ raised  
cuffs & neckline.

Kidmohair & merino pdo.

