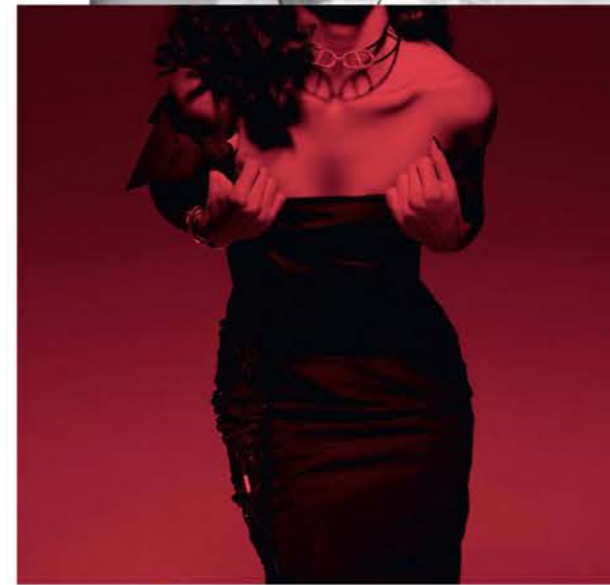
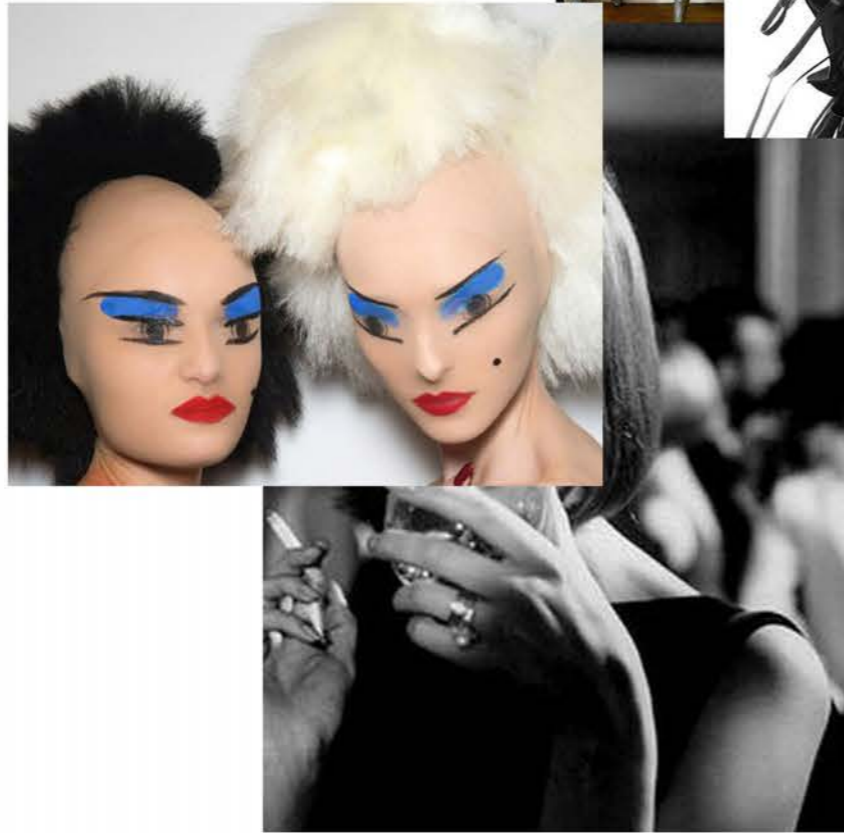




Expand into print idea.









Too delicate
Frangible
"Explosive"





- Colour swatch:
- Duckless Satin
- Pearl Organza with coloured print
- Pearl Organza with black print
- Ruby organza



Layering tests to create more depth with prints



Double print scale

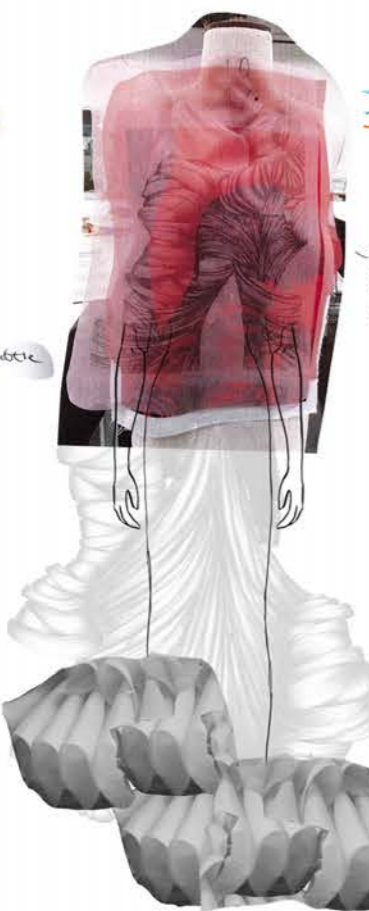
Too busy

PONGEES
specialists in silk

Tel +44 (0)20 7739 9130 Fax +44 (0)20 7739 9132
E-Mail: sales@pongees.com Website: www.pongees.com

PONGEES LIMITED
525X/0246 140 cm
CHINESE ORGANA
RUBY

E-Mail: sales@pongees.co.uk
Tel: (44) 020 7739 9130



Print test on coloured organza.

Doesn't work too dark.



interesting colour combo



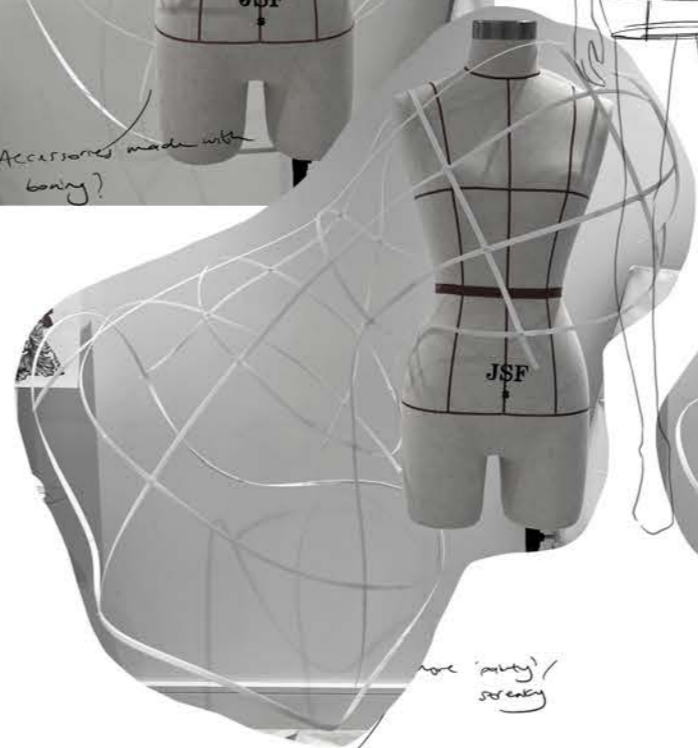
Darker
rich tone
works really well

very smooth skin
Paint text on dummies
team site!

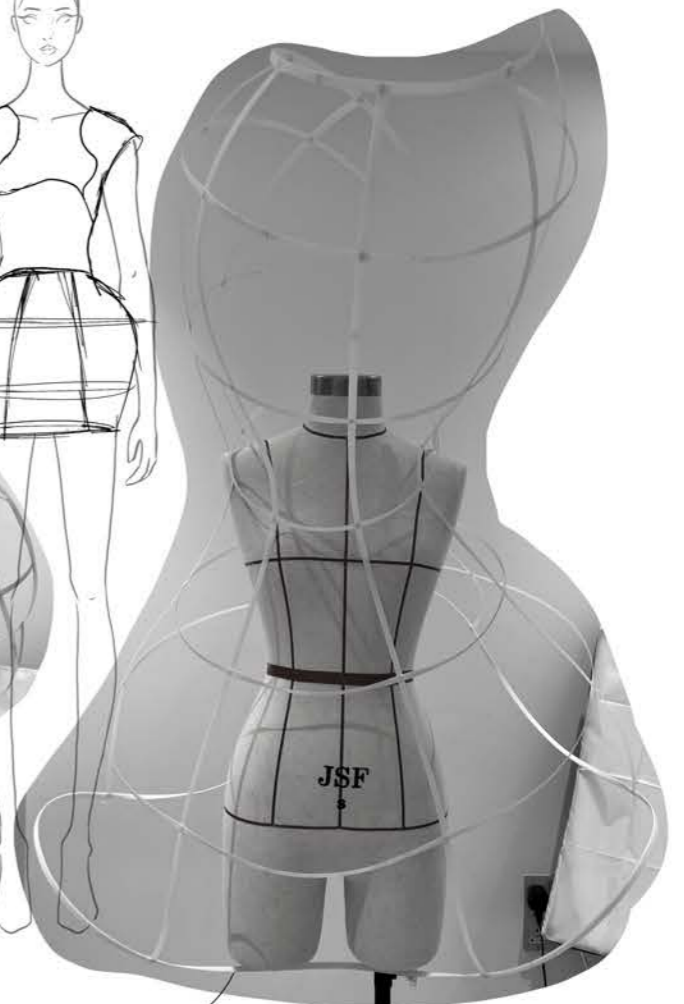
Double layer of tulle
offset print



Accessories made with
boring?



more 'pretty'
serenity



Add organza + print



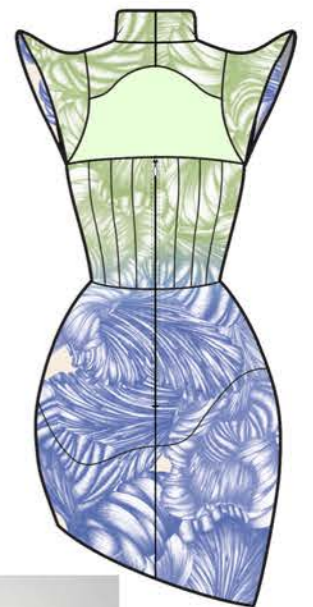
Boring pants?



shoulder needs to be more dramatic



work on more fitted corset



Needs to be more rounded
smoother curve
Maybe try without boning & with softer tone?





Handpainted piece wrapped around body

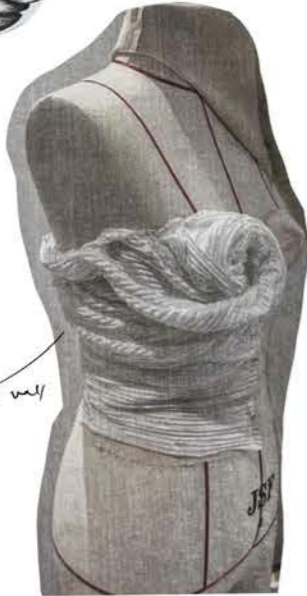
neckline or

✳



LOOK 1 Fitting

pleated fabric works well for wrap



- Hand painted skirt pieces
→ cut in duchess to test weight.

- Work on side view sleeve drape