



## THE ETERNAL AND THE HOLY

*Dimitar Chochev*

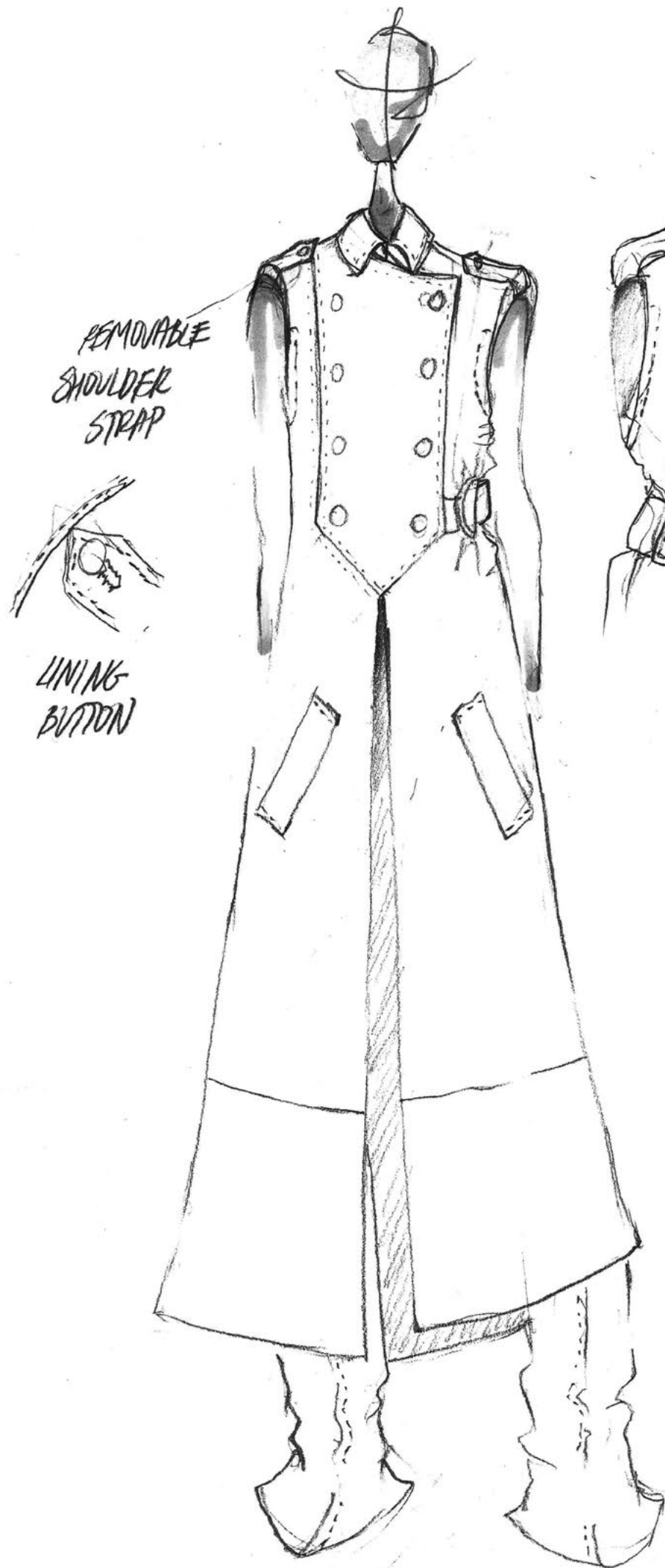
Initially inspired by the life of Bulgarian poetesse Elisaveta Bagryana, “the Eternal and the Holy” follows the transformation of a woman, who, consumed by the agile principles of contemporary living, has lost her pure connection with serenity. Her world, endured within a shallow and wretched reality, is brimming with restlessness and the irrepressible desire for living life anew. The muse refuses to obtain the trivial existence of modern culture and as with all organic change, she emerges herself into the chaos of the unknown. Her world begins to shatter to then regenerate in its neoteric order. The further she flees from what she has known of life, the further her disharmony ceases. The muse is not escaping from reality. Rather, she is choosing to create her world the way she imagines it. To embrace the art form of simplifying life and rejuvenate one’s connection with nature. Bagryana’s poem ‘to snap off each knot-so as to glimpse, free, separate- myself- my image, with no past, no rank, no age, no name’ best embodies the climax of her transcendence. Surrendering the burden of the past towards peace. Liberation and self-sufficiency are emanating from her being as she finds her equilibrium within the realms of serene solitude.

The purpose of this collection is to offer a new perspective on the relationship between fashion and humanity. In the reality of modern society, fashion has emerged to serve as a material manifestation of the ego- as means for the individual to separate themselves from the collective and identify as ‘unique’. Fashion is recognized as a form of ‘armor’ in its socio-cultural function, used to build a façade of one’s preference on how others should perceive them. This collection attempts at reinventing fashion as an extension of the empathic and the vulnerable within the individual, and not as vehicle for estrangement.







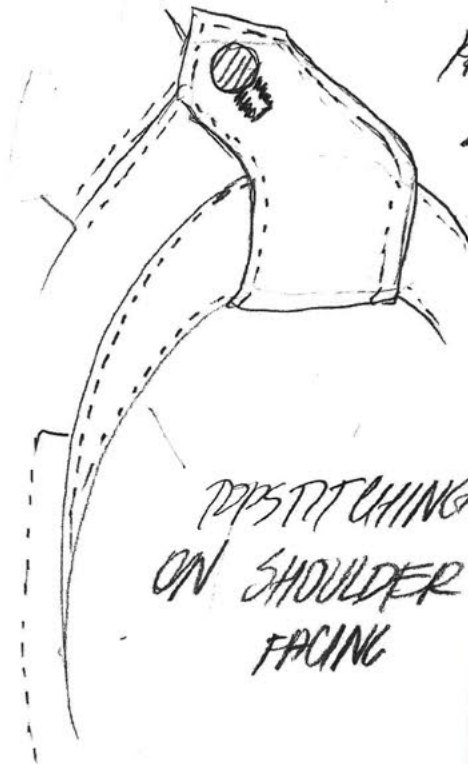


REMOVABLE  
SHOULDER  
STRAP

LINING  
BUTTON



OPENING AT  
CB



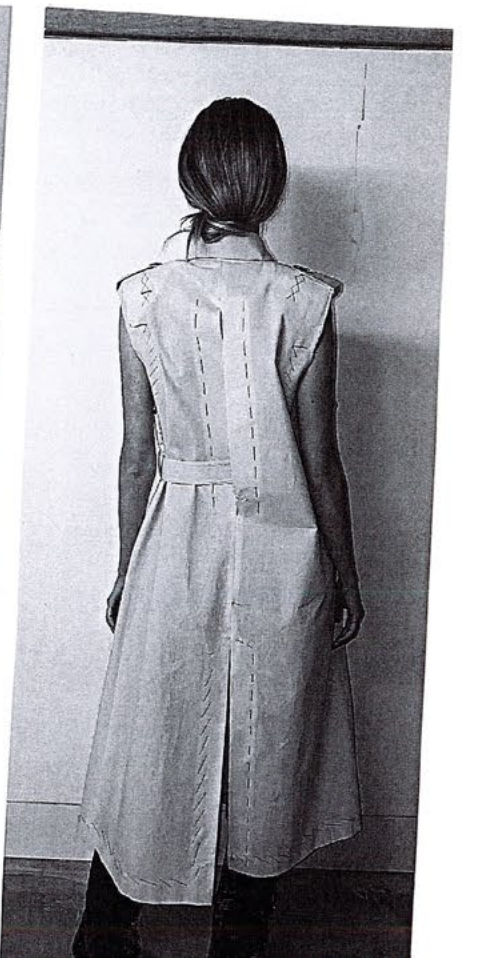
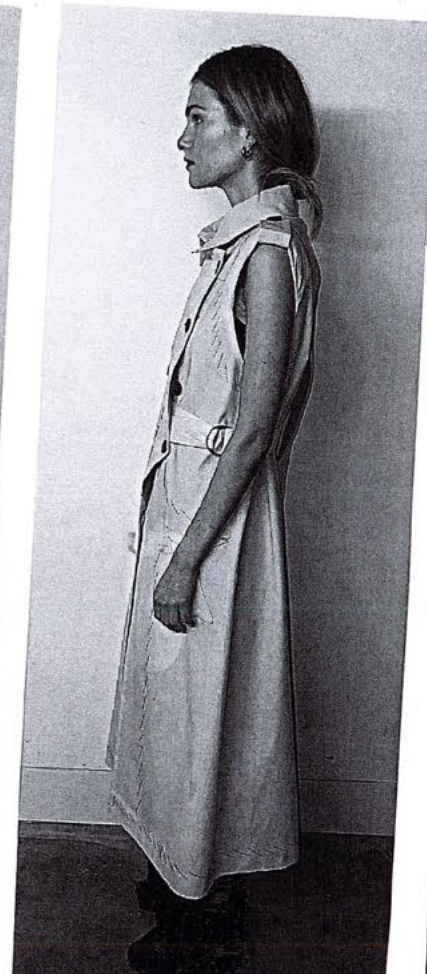
REMOVABLE  
SHOULDER  
STRAP

PISTITCHING  
ON SHOULDER PAD  
FACING

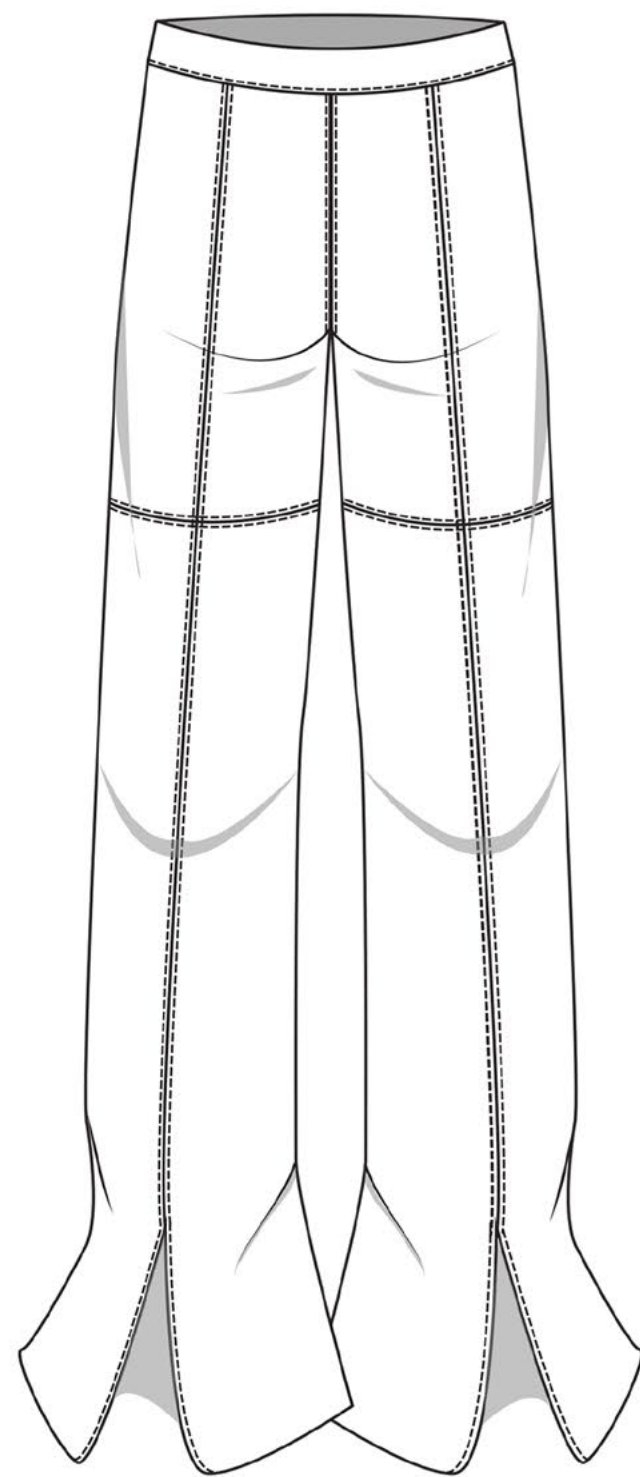
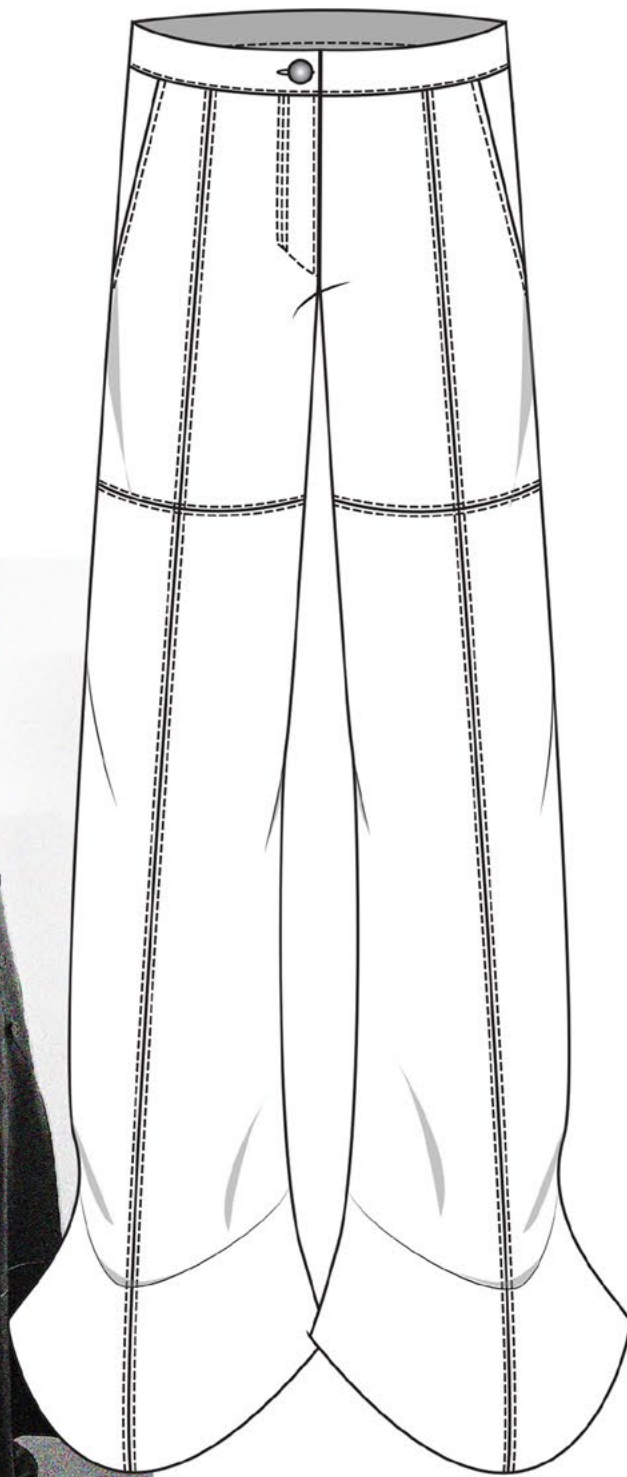
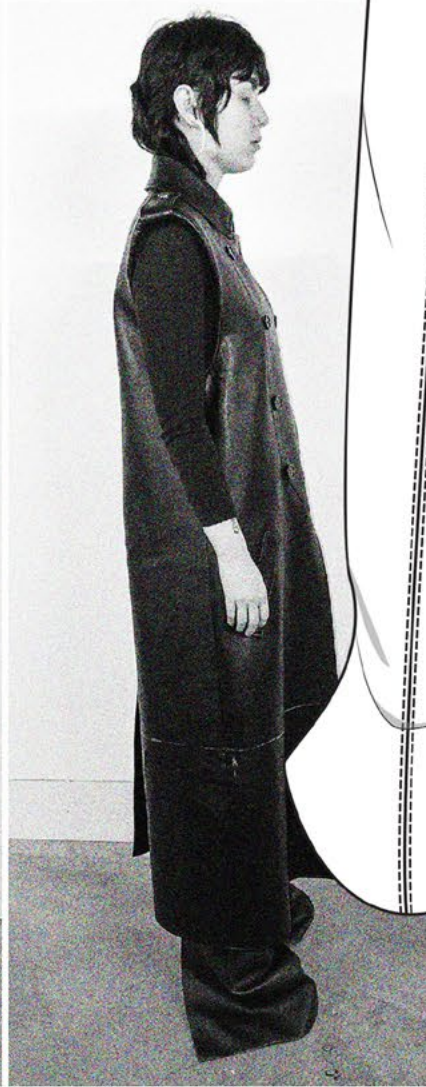


COAT (SLEEVELESS) WITH  
HOOD

THE COAT  
IS A COAT  
AND THEN  
IS REPTED  
ON TOP OF  
THE SHEL  
IN "MADAME  
GRES"  
STYLE.

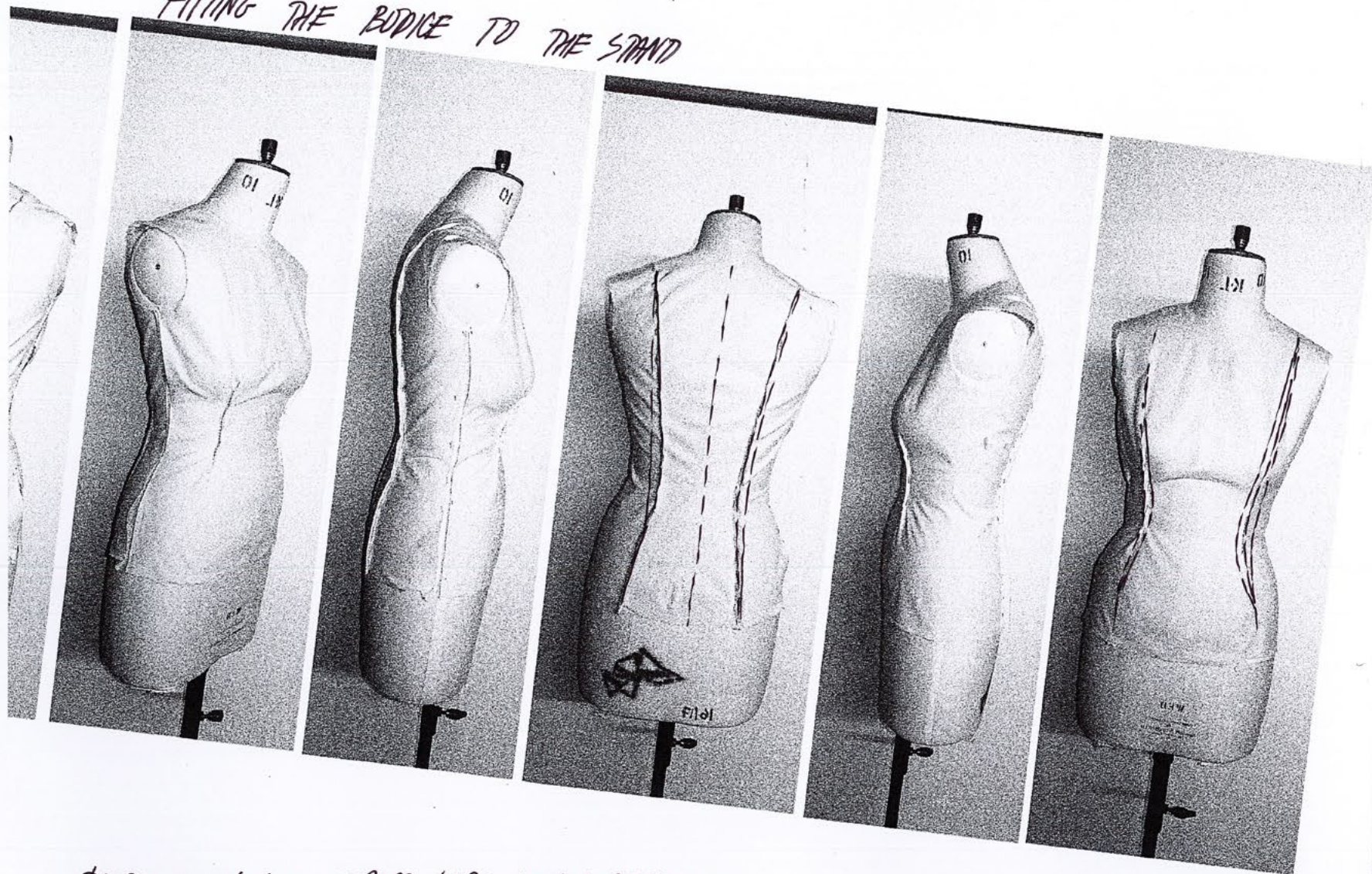




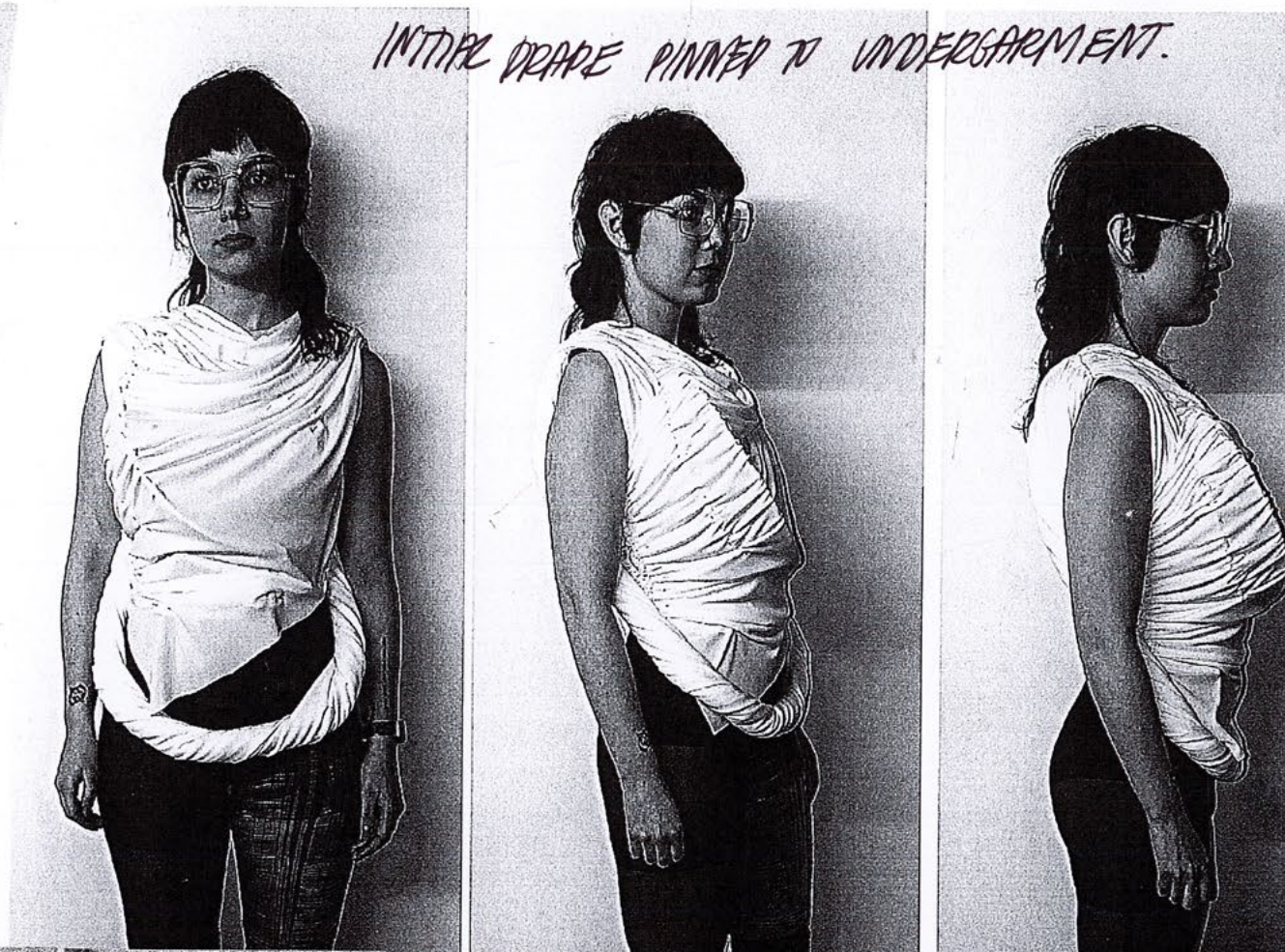




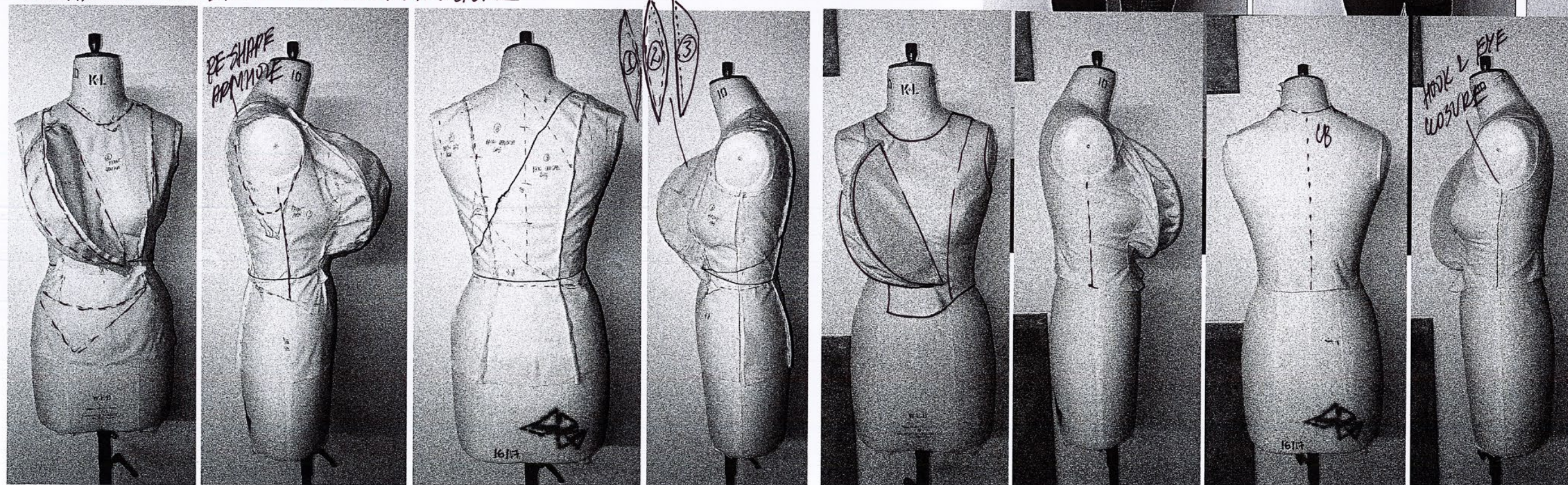
FITTING THE BODICE TO THE STAND



INTERNAL DRAPE PINNED TO UNDERGARMENT.



DRAPE ON THE STAND WITH INTERSTRUCTURE





# LOOK 2



WHITE JERSEY?

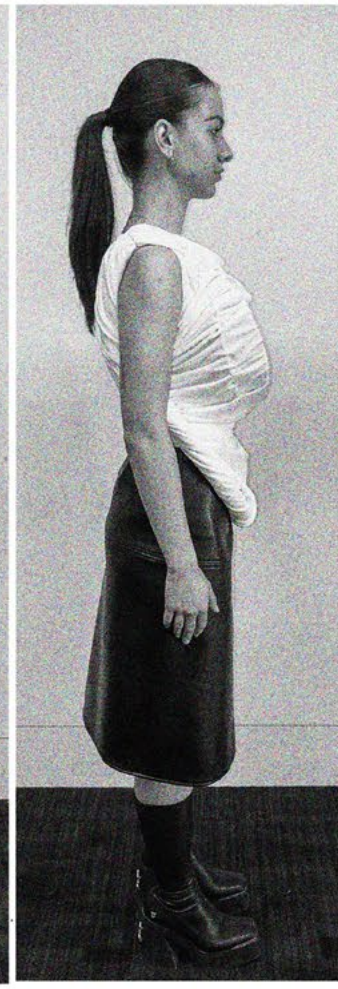
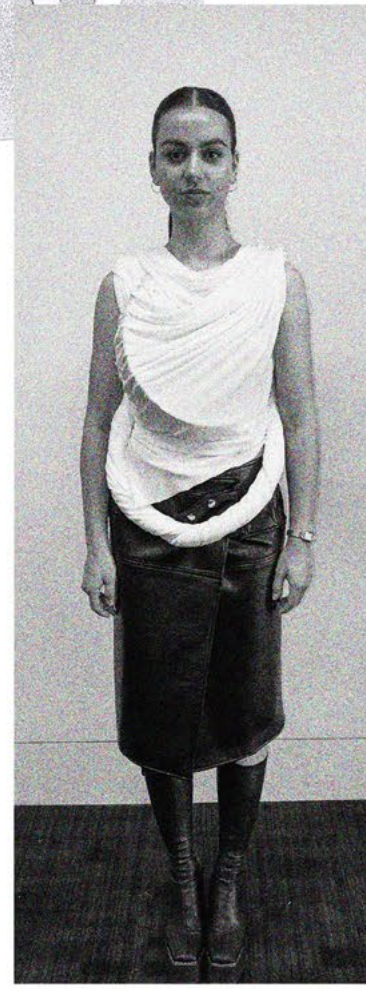
TOP - BASIC BODICE  
A POSE STRUCTURE  
AS ON  
REFERENCE  
TO THEN DRAPE  
JERSEY ON  
TOP WITH  
SHIPPING  
METAL INFR-  
STRUCTURE  
WHITE  
FITTED  
GLOVES

WHITE  
COTTON?

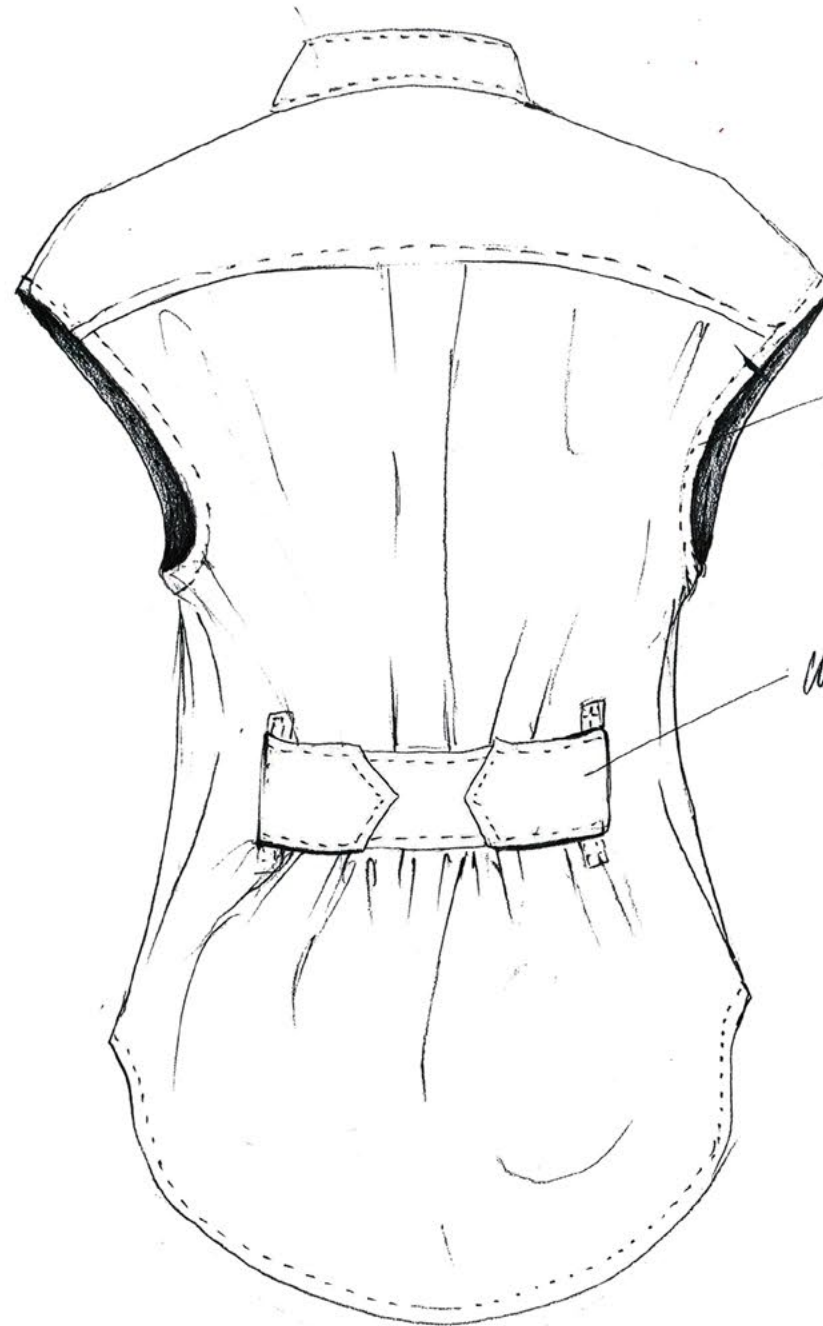
BLACK  
WOOL  
OR  
COTTON

SKIRT: wool  
OR  
COTTON?  
TO RE-  
CREATE  
THIS SHADING  
WITH AN  
UNDERSTRUCTURE  
SKIRT AND  
PANELS WITH STRAP ELONGATIONS;

JERSEY

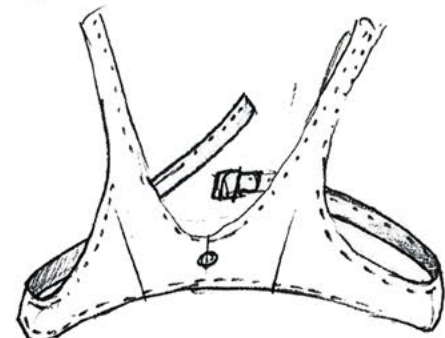
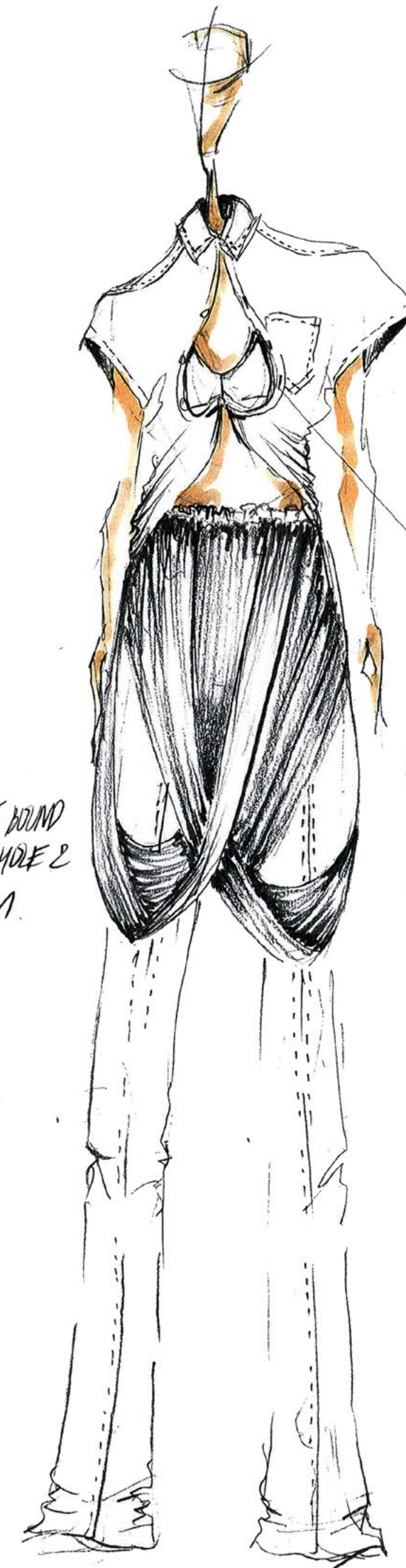






FLAT BOUND  
ARMHOLE &  
HEM.

CONCEALED  
POPPERS



BODICE UNDERGARMENT  
ATTACHED AT SHIRT  
SHOULDER TO MAINTAIN  
DESIRED SHAPE.



