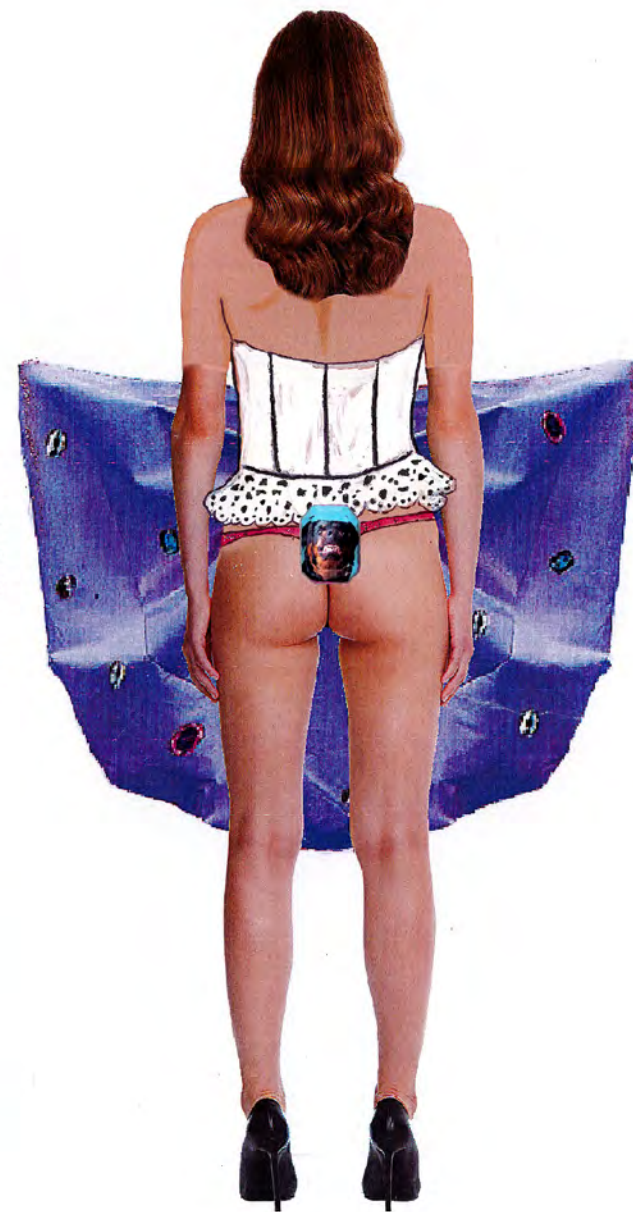




La familia









More dramatic Shoulders



Crochet

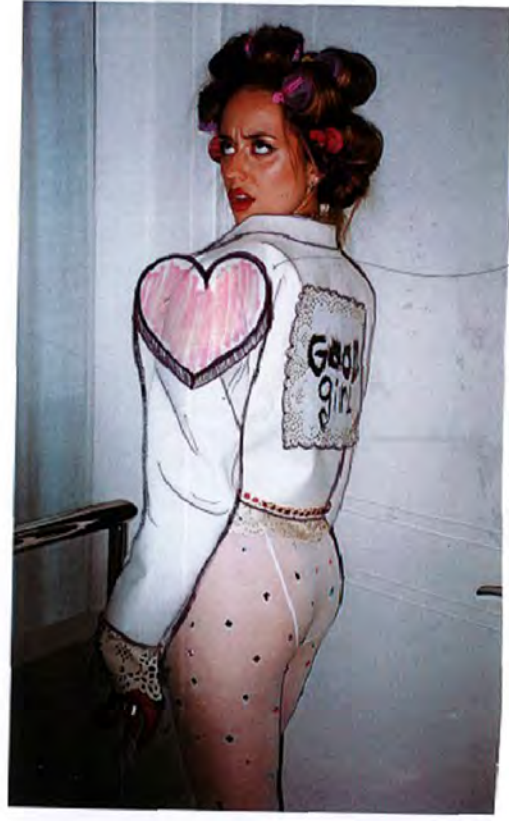


Neoprene

Crochet heart with dog print on knee to add texture, volume and speediness to tights.



How will I create this shoulder? and what shape do I exactly want.



3D heart shape shoulder to add volume

Front view







*Drapes done by using a pebble pattern.*



topstitched

Poodle dog is used for a cleaner finish



Thinking of refining shape of paws

New zip on the side



Smaller lining so it rolls on its self

Back dog is not bagged

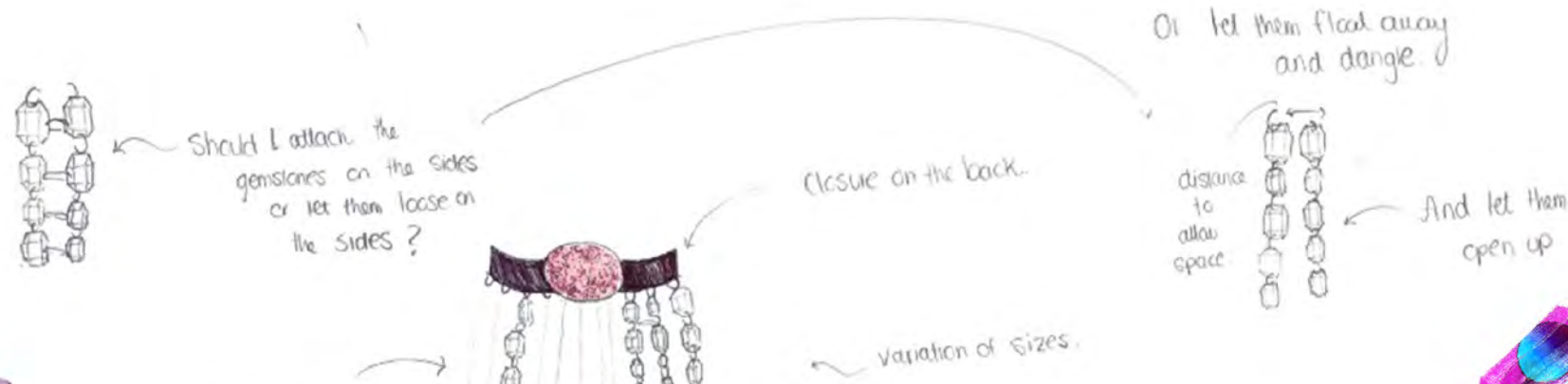


Back zip will move to the side and I will use invisible tape zip









Different lengths.

Overshirt made out of resin gemstones.

