







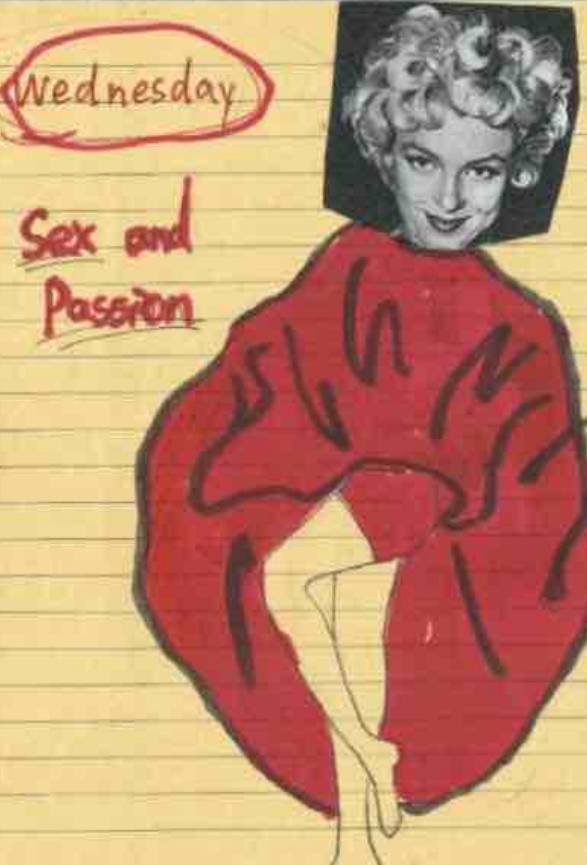
Monday
Quiet and Elegant
Card Nothing but Six There



Tuesday
Verve and Sunny
Let's Run!




Wednesday
Sex and Passion




Thursday
Cute and Childish

Today
I am the cutest!



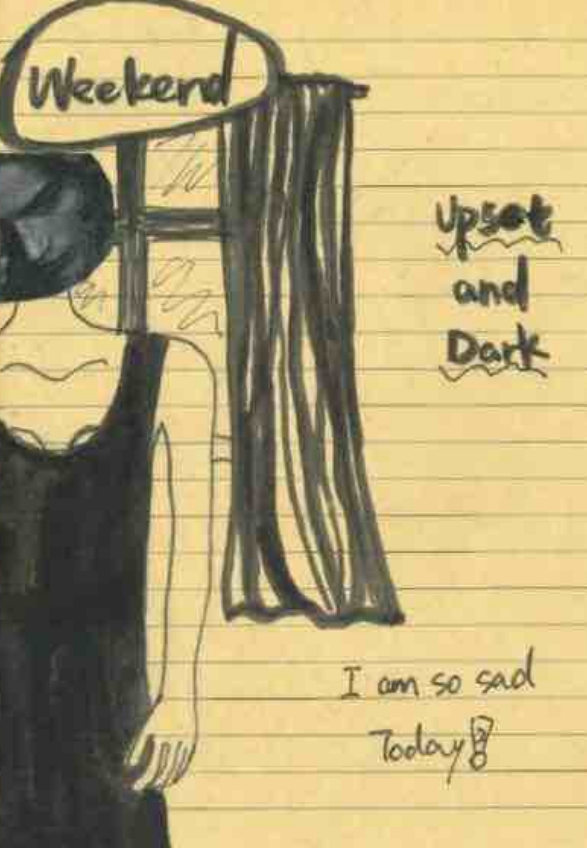
Friday
Neutral and Sky

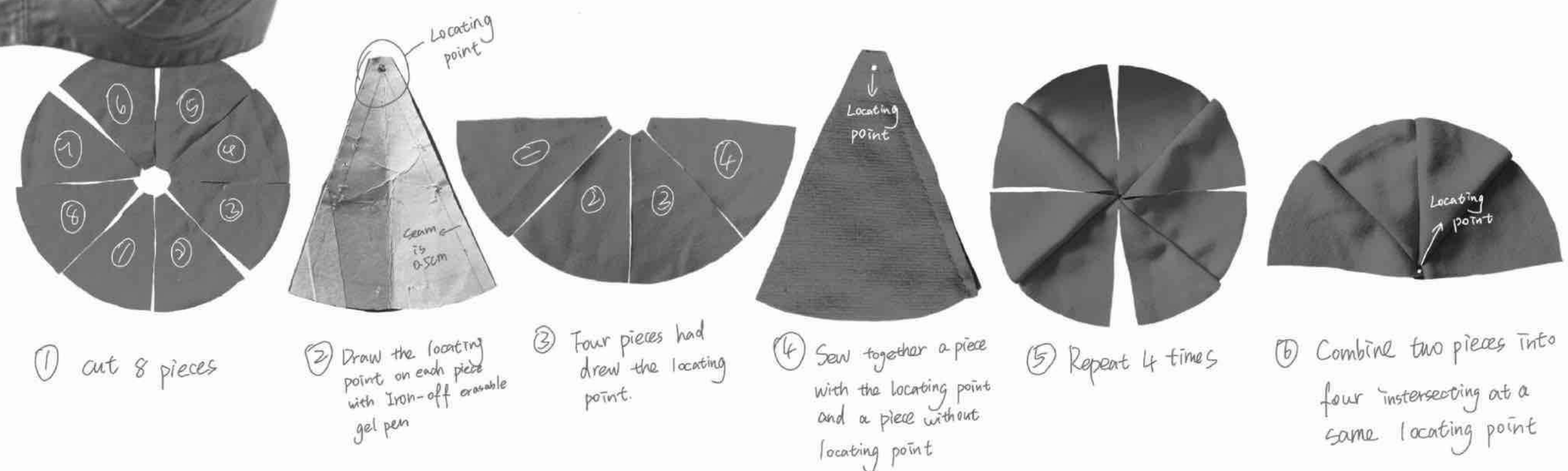
I acted like a man today!



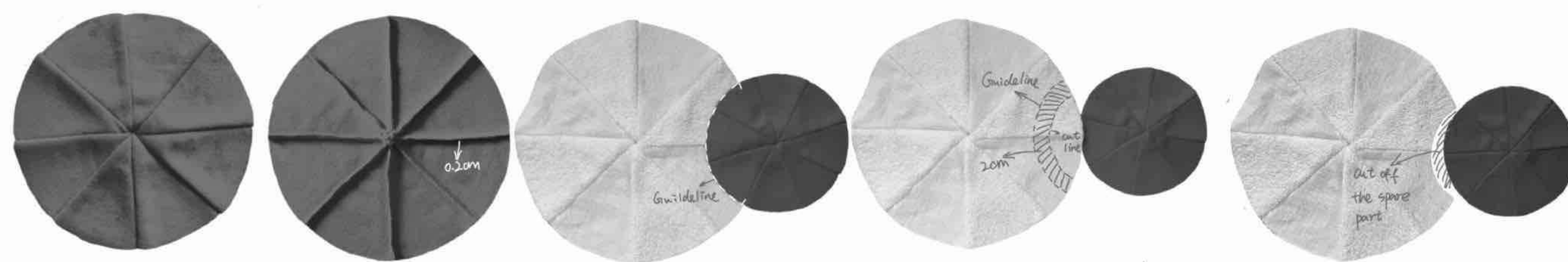
Weekend
Upset and Dark

I am so sad today!

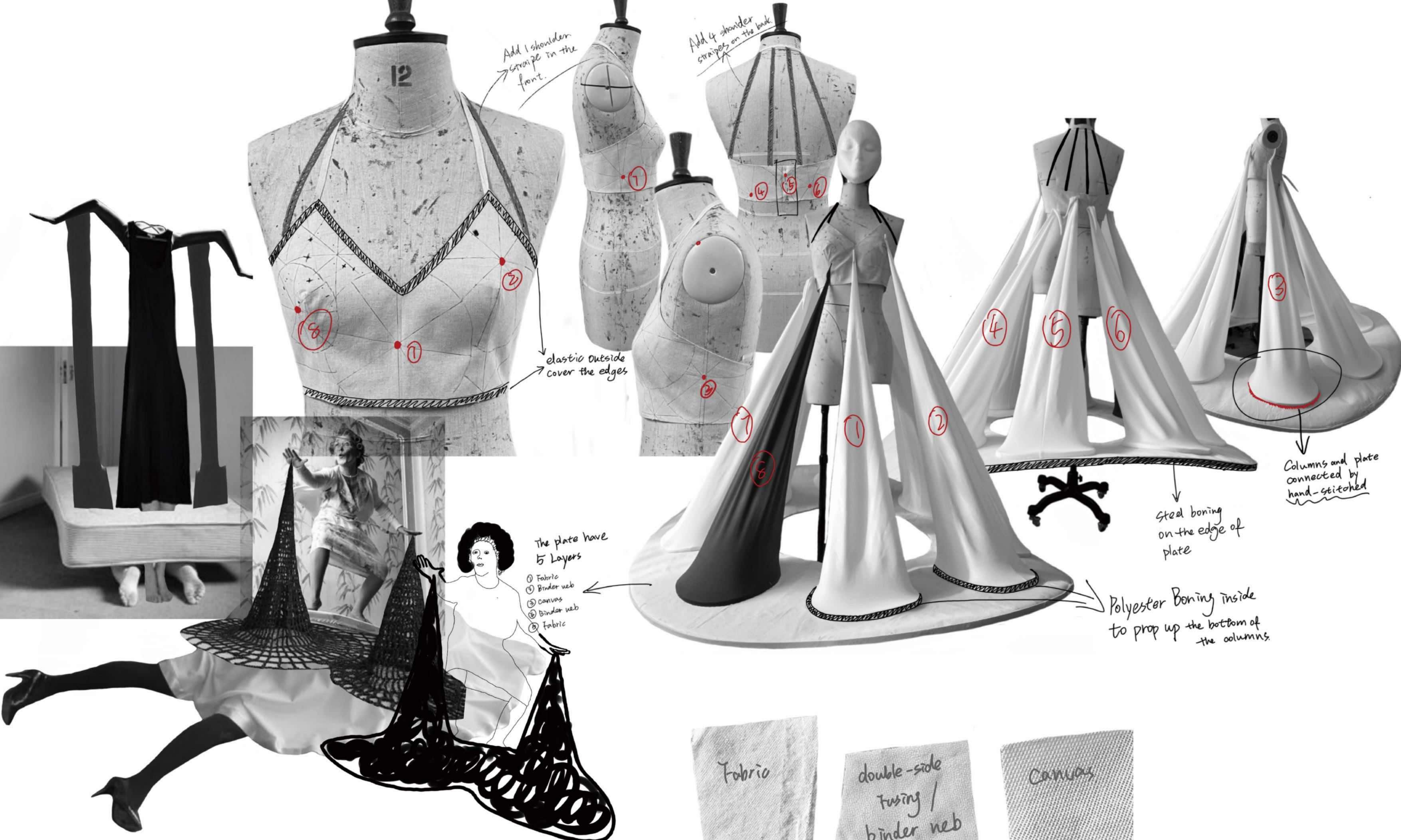




① cut 8 pieces
 ② Draw the locating point on each piece with iron-off erasable gel pen
 ③ Four pieces had draw the locating point.
 ④ Sew together a piece with the locating point and a piece without locating point
 ⑤ Repeat 4 times
 ⑥ Combine two pieces into four intersecting at a same locating point



⑦ Combine 4 pieces into 8 pieces and finish a whole circle
 ⑧ Cut the seam from 0.5cm to 0.2cm
 ⑨ Use erasable pen draw a Guideline
 ⑩ Draw a cut line located at 2cm out of the guideline
 ⑪ Cut off the spare part along cut line



12

Add 1 shoulder strap in the front.

Add 4 shoulder straps on the back.

8

2

1

elastic outside cover the edges

7

4

5

6

7

8

1

2

4

5

6

3

Columns and plate connected by hand-stitched

Steel boning on the edge of plate

Polyester Boning inside to prop up the bottom of the columns.

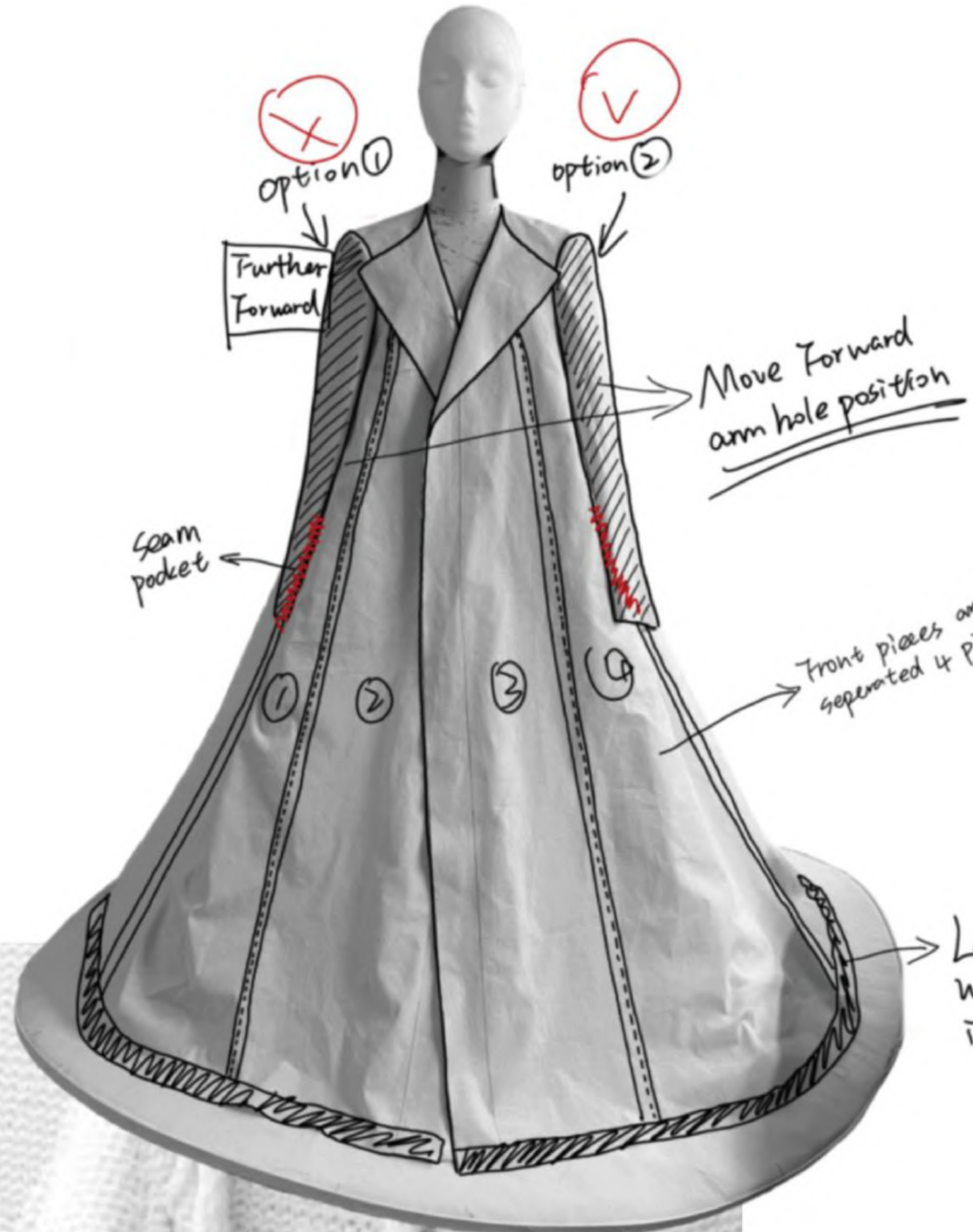
The plate have 5 Layers

- 1 Fabric
- 2 Binder web
- 3 canvas
- 4 Binder web
- 5 Fabric

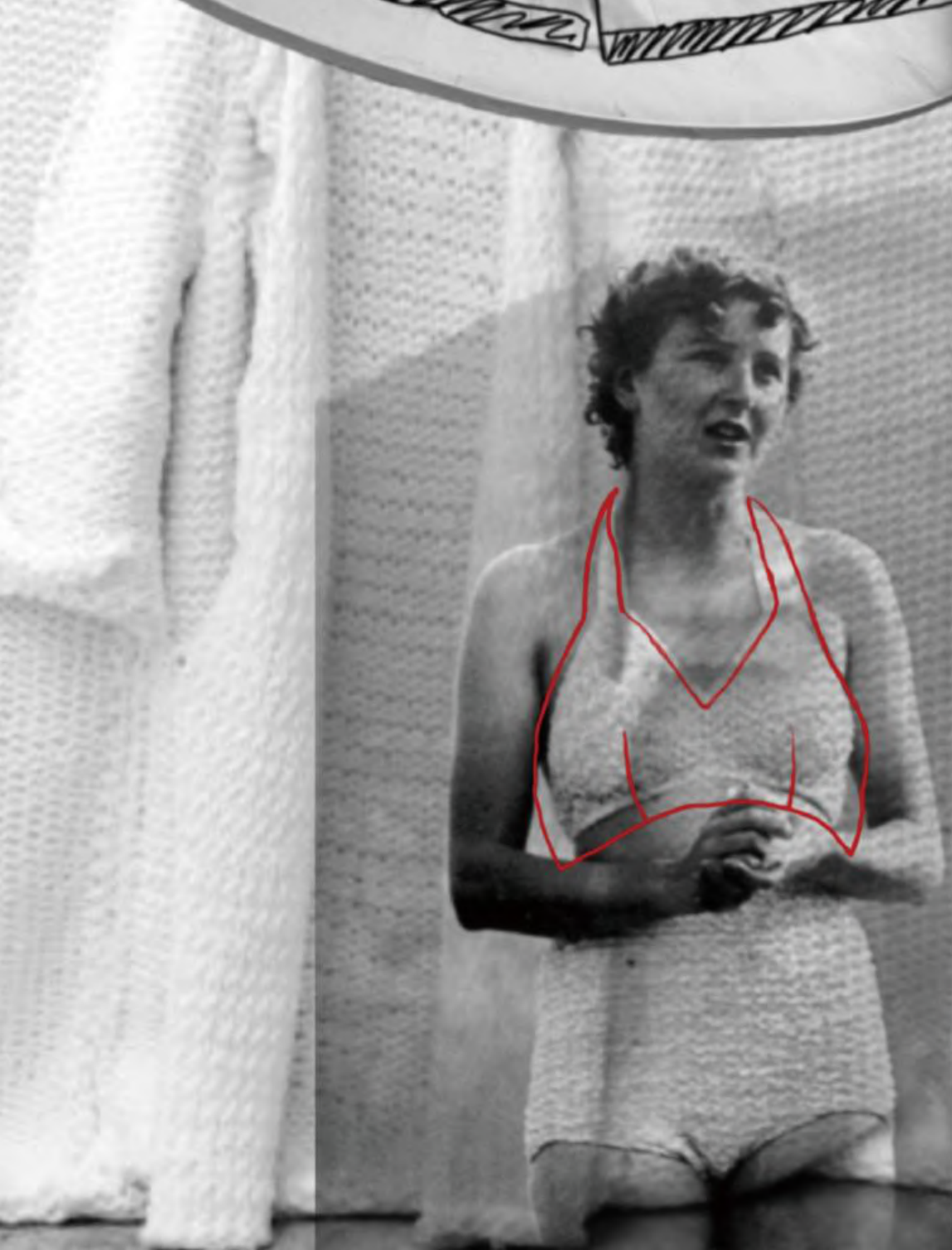
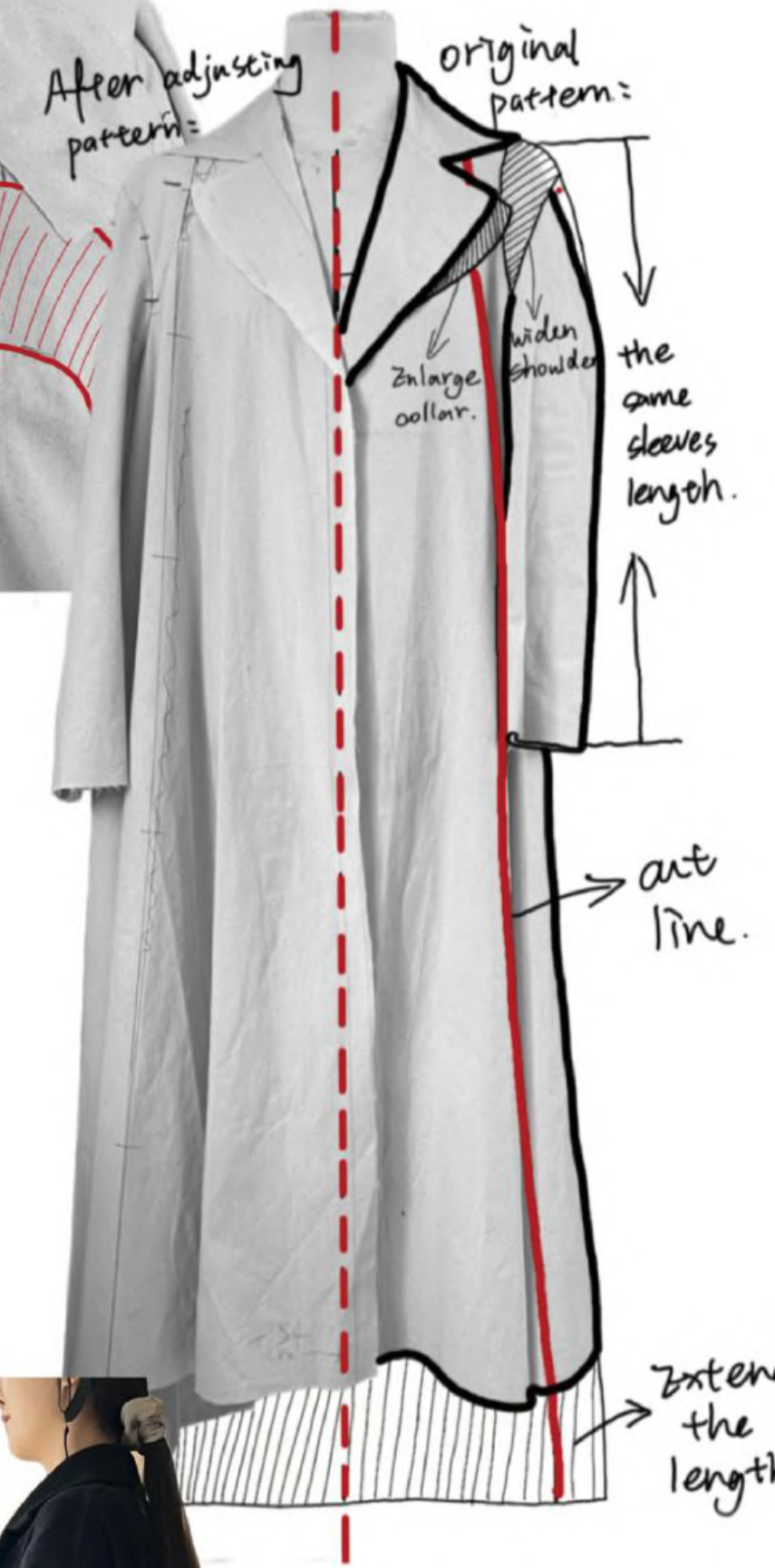
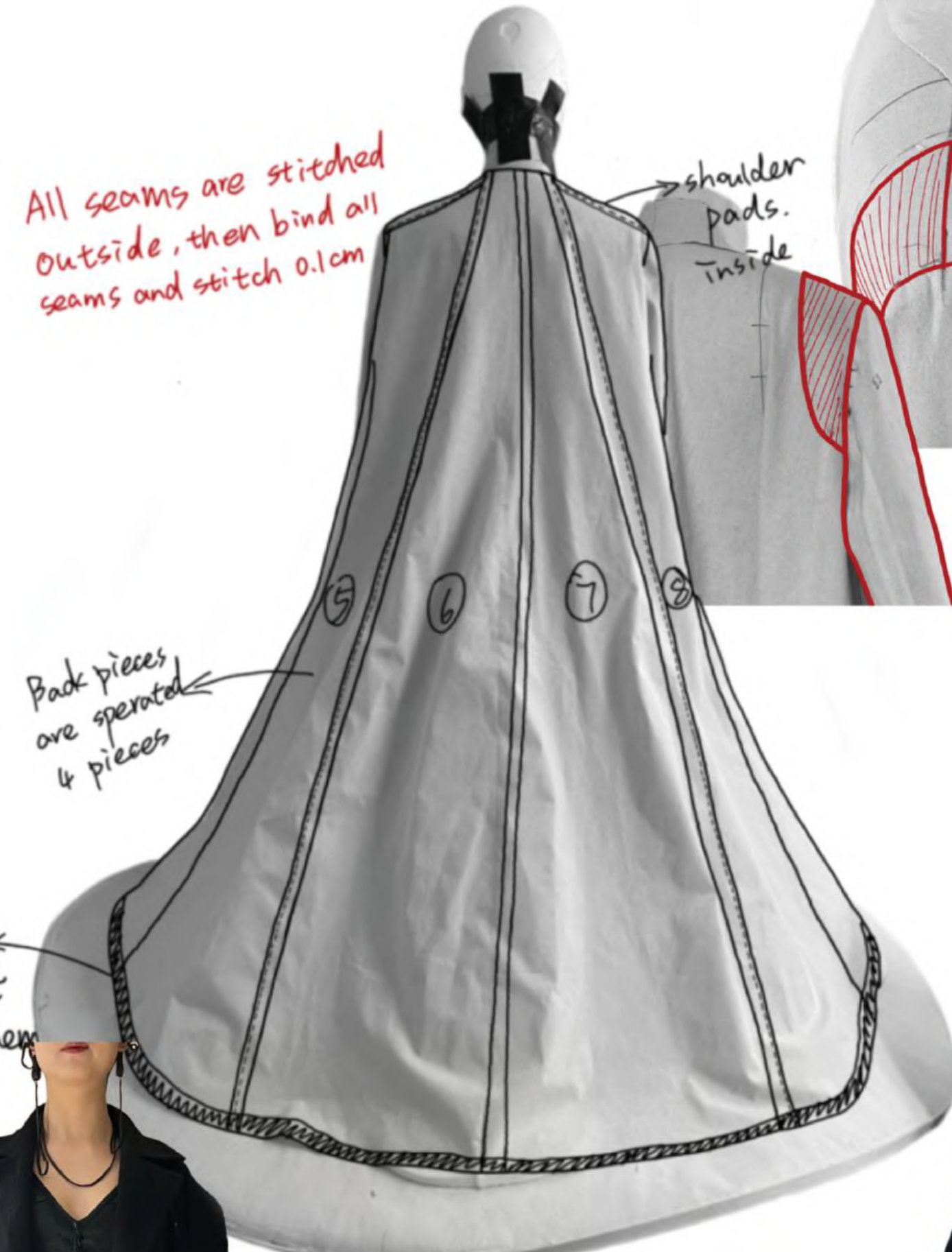
Fabric

double-side fusing / binder web

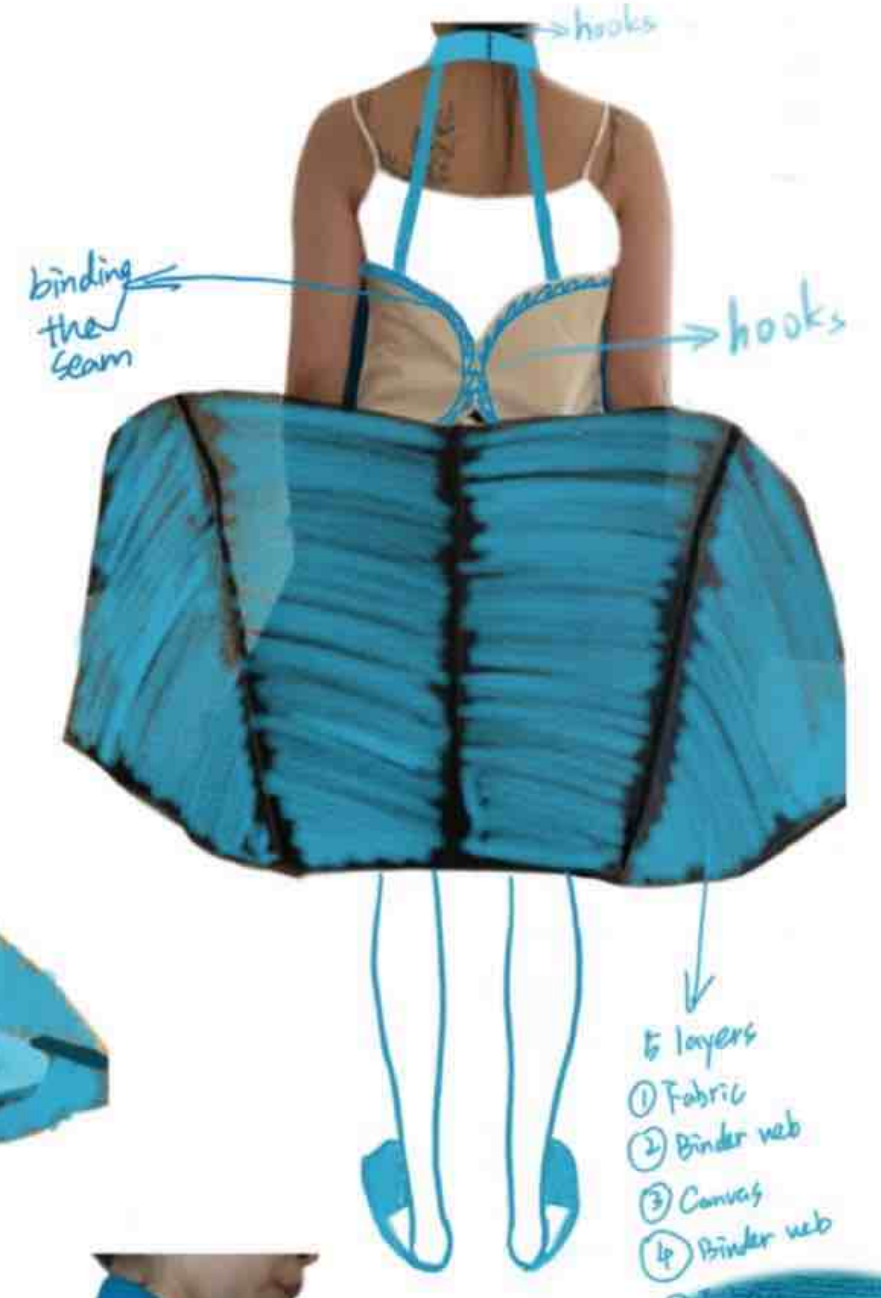
Canvas



All seams are stitched outside, then bind all seams and stitch 0.1cm



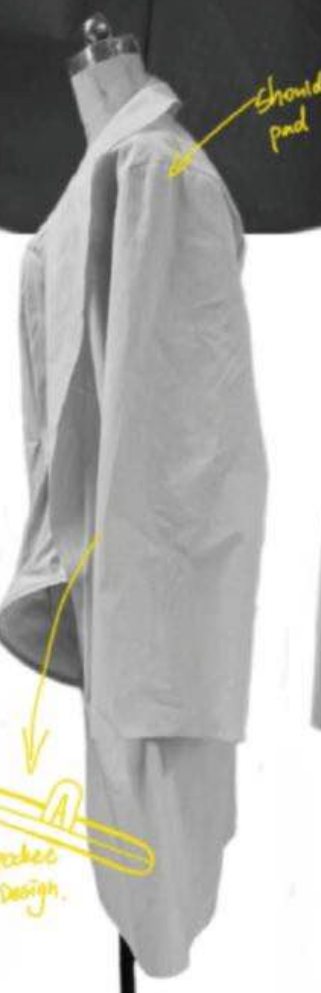




- 5 layers
- ① Fabric
 - ② Binder web
 - ③ Canvas
 - ④ Binder web



correct





Imagine myself getting married



wider shoulder

Tailoring

more fitted

Add 2 columns on left side (front and back)



Second Toile:

wider shoulder (men size)

fitted waist

lower collar

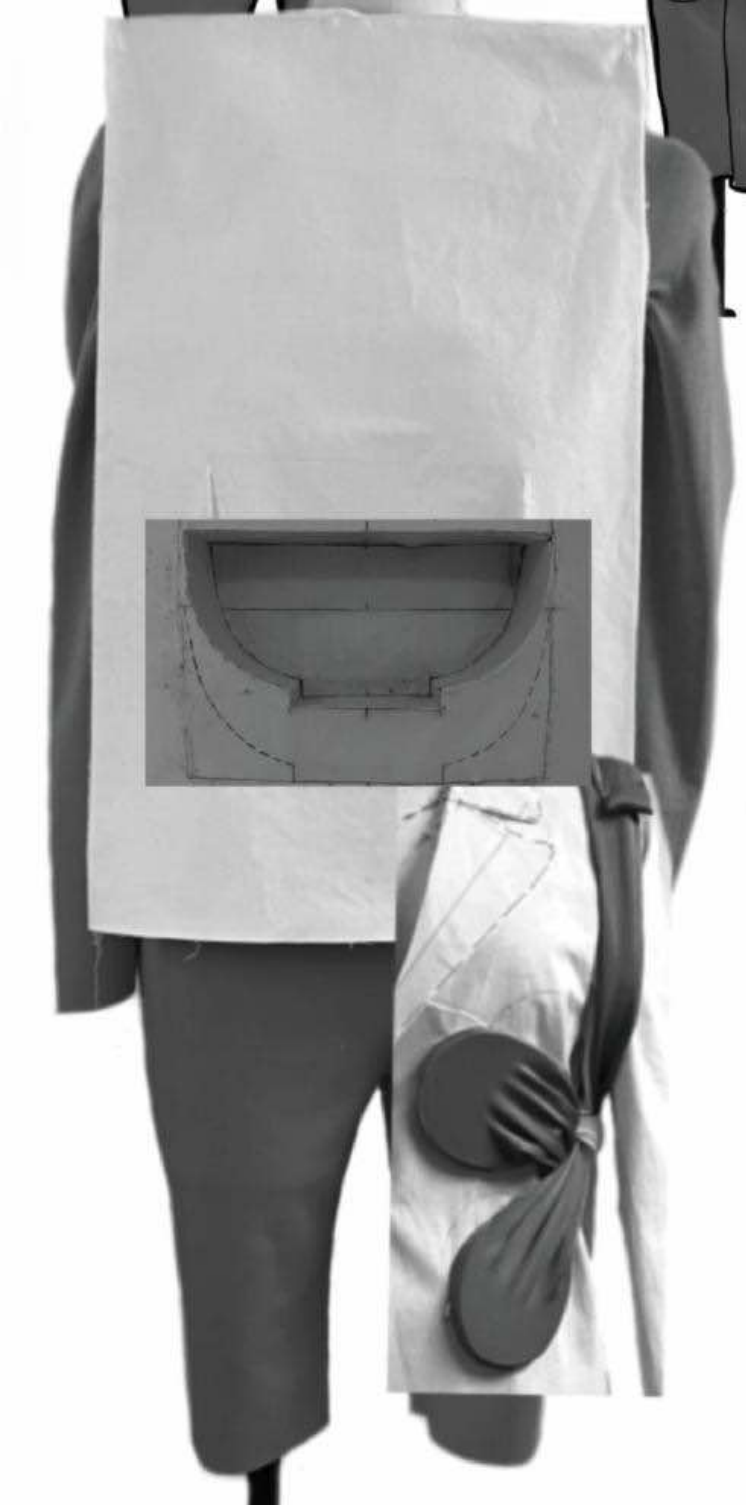
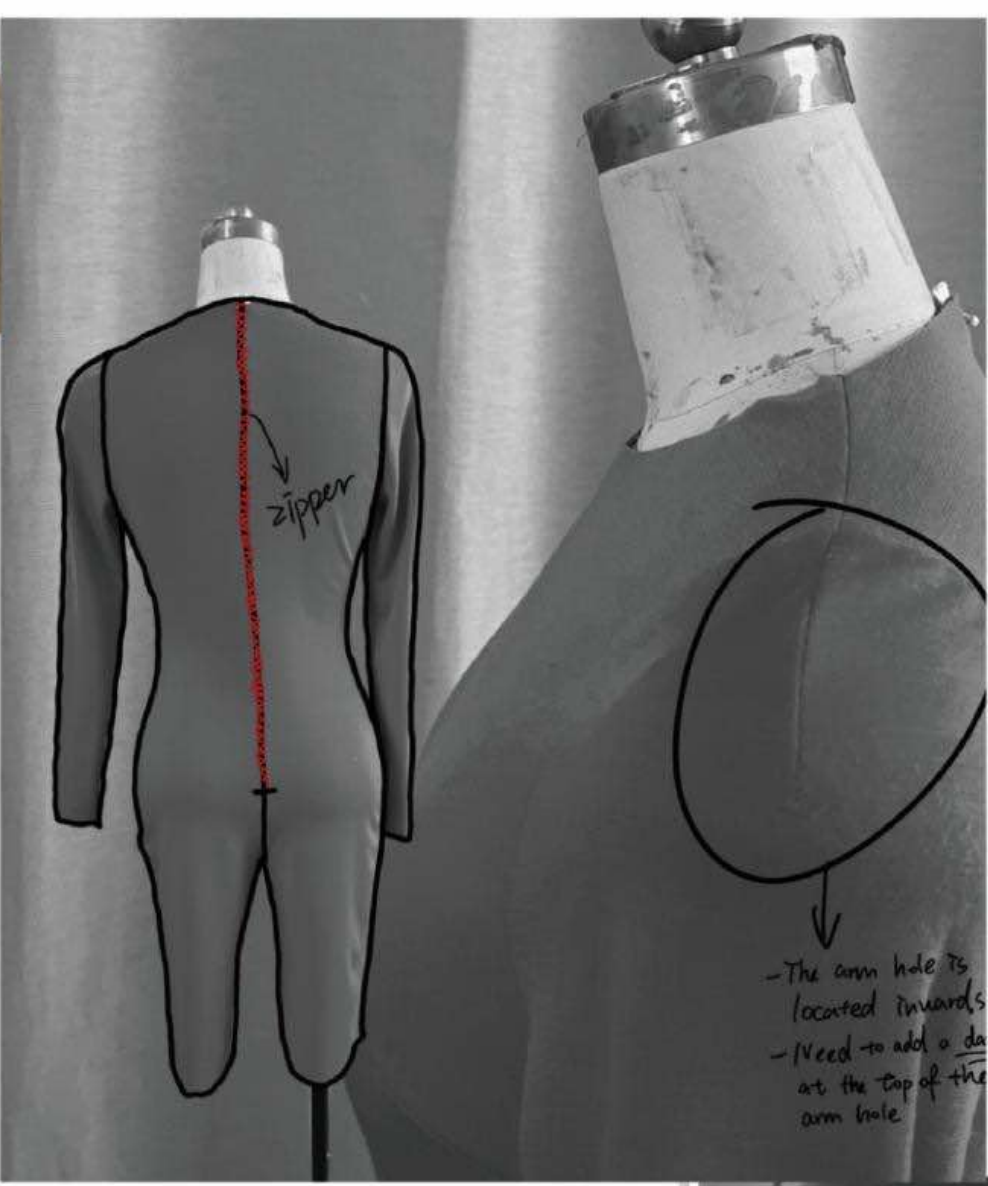
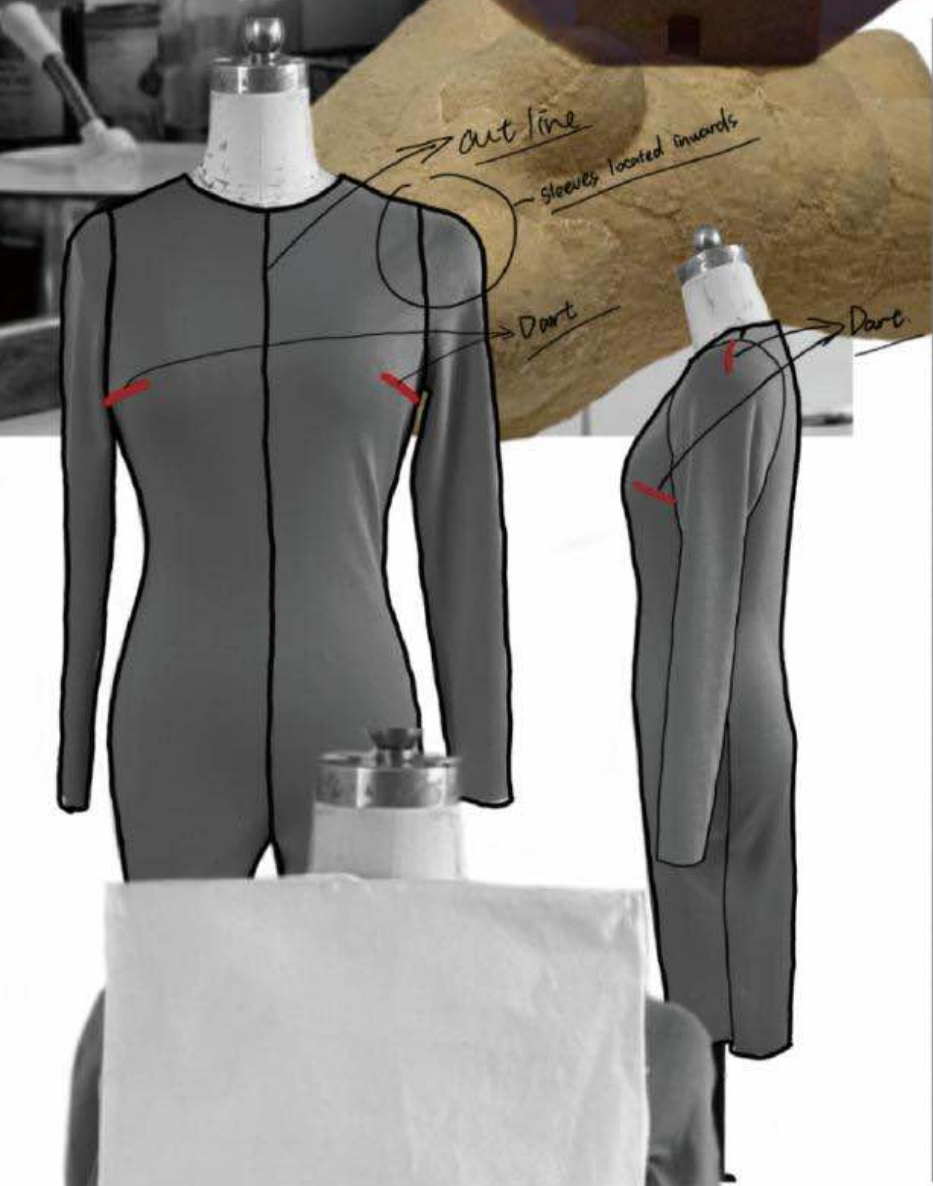
left: higher position

right: lower position



half size use fabrication

broader half use normal fabric





① white



② yellow



③ Red



④ pink



⑤ Blue



⑥ Black





