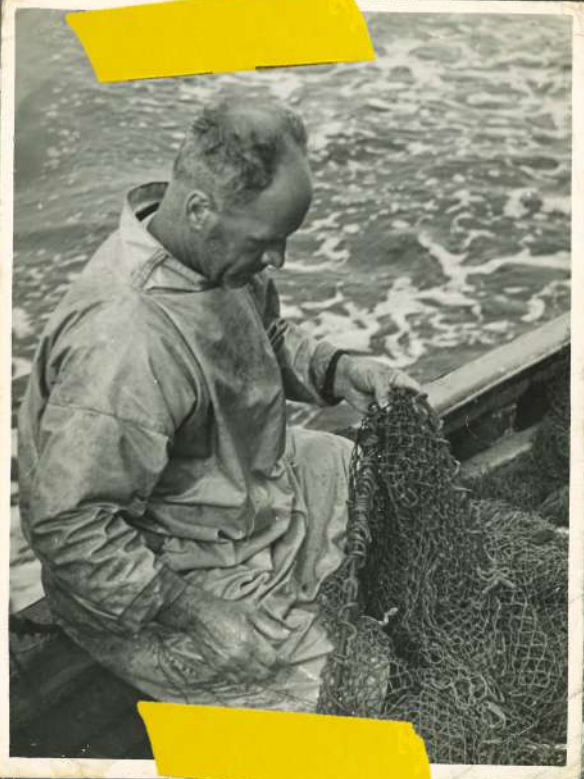
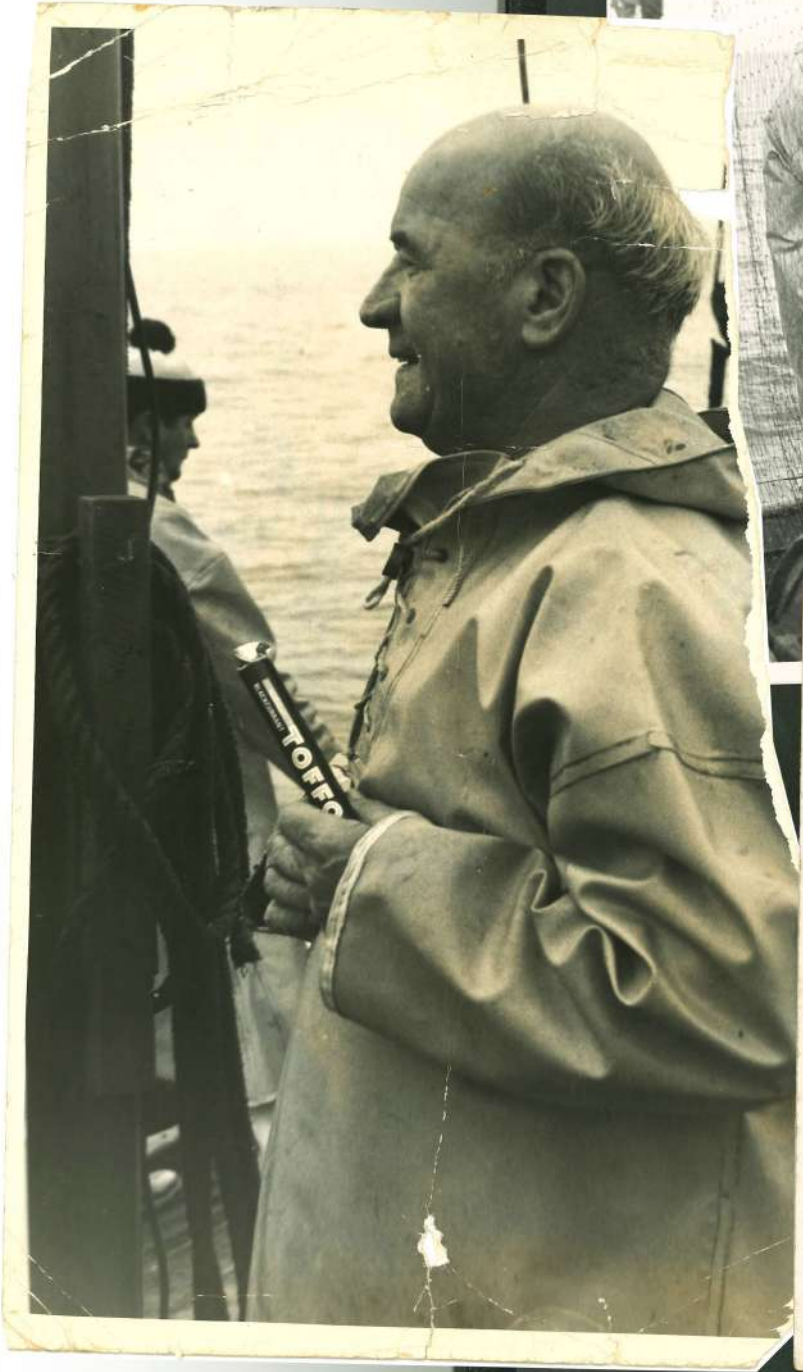




lettering of train boat

OWEN EDWARDS NAITH

- name Owers-
with "INCENTIV" - both
and Barniclest lettering



need of
refined
cloth

Second design

- clare w
- a close

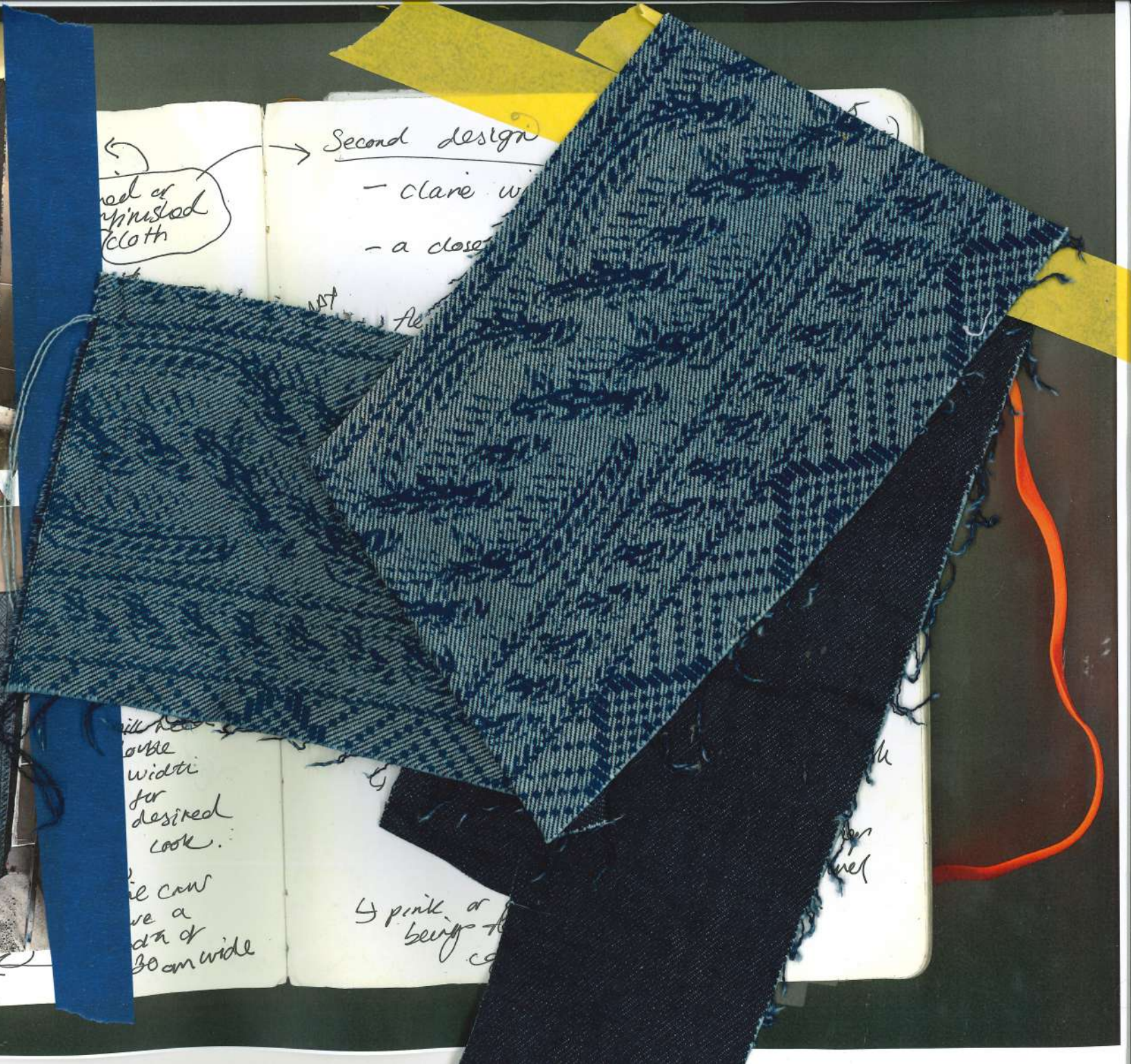
will have
double
width
for
desired
look.

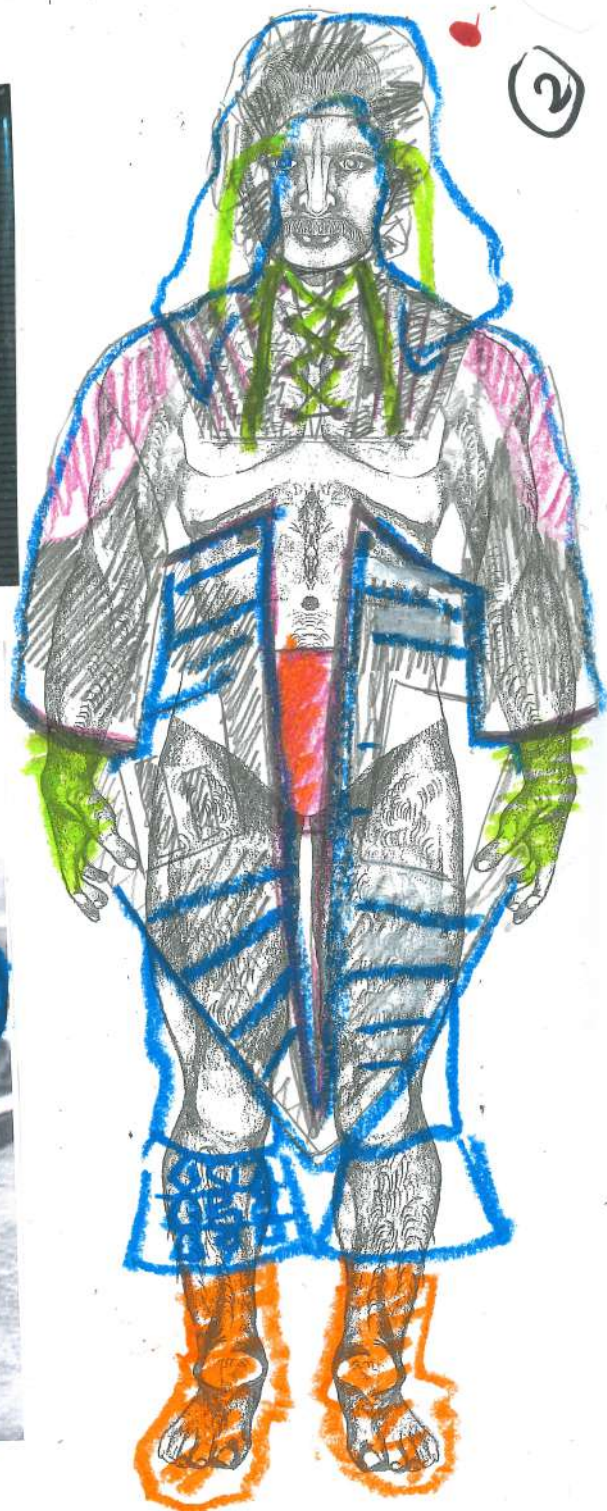
ie can
we a
d'n of
30cm wide

4 pink or
being to
ca

(100cm wide)

for
net





West Mills
L 2.6

Chorth Mills



↑
orange
AND
blue

↑
pink

Chorth

9 tall
ab

WEST MILLS
& red mills
on haddington - tall co
that weaved
needs up
sim fabrics?



205

②

A MAN OF THE SEA

DRESSED IN FISHERMAN'S
JUMPER

A MAN OF THE SEA
YOU WERE SHY HANDSOME
TO ME

SAY GOOD LOOKS STRONG
WORKING HANDS

A SMILE SO WARM
I TOOK YOU TOO MY HEART





③

Glazed collar

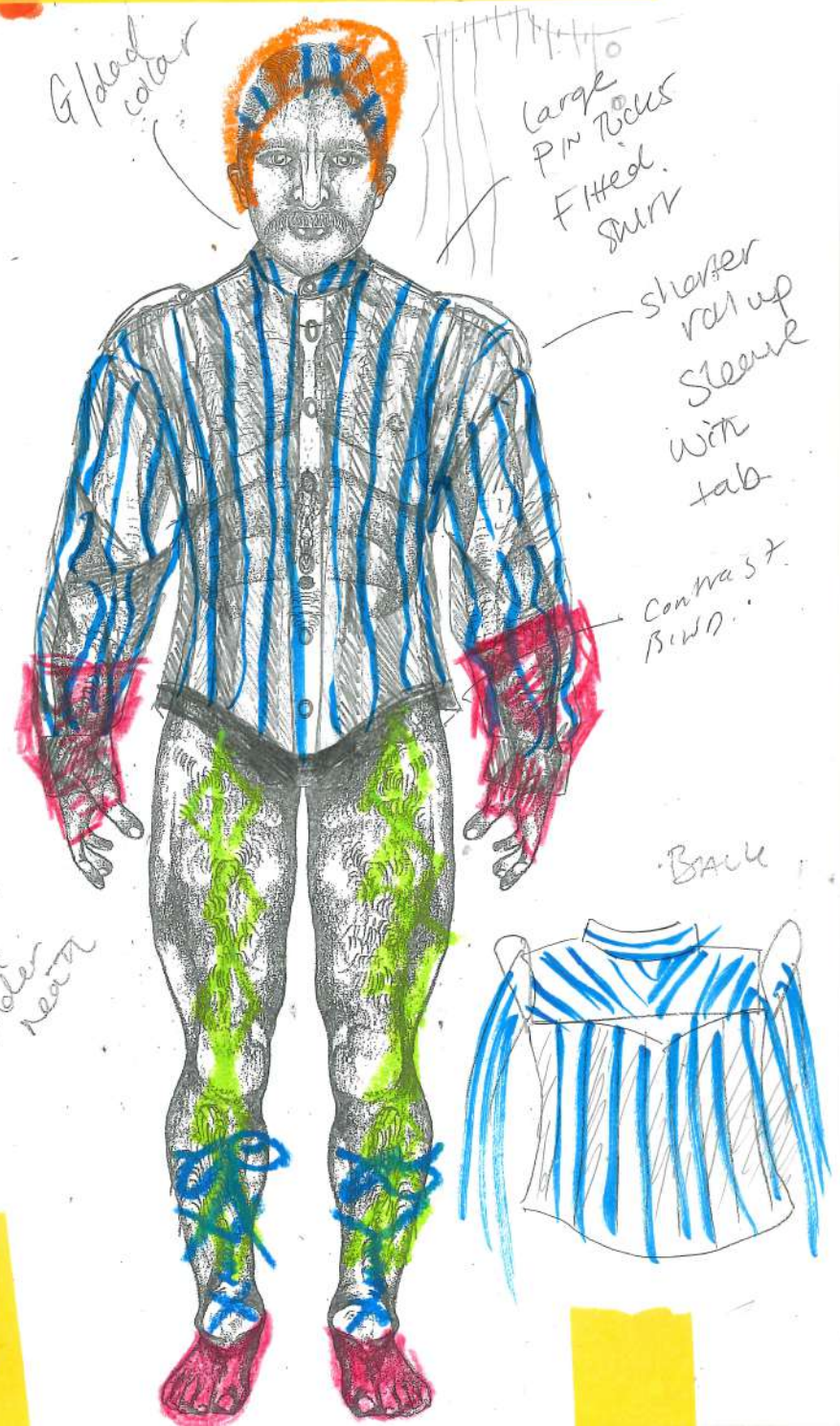
Large
Pin Tucks
Fitted
Shirt

shorter
roll up
Sleeve
with
tab

Contrast
B.W.D.

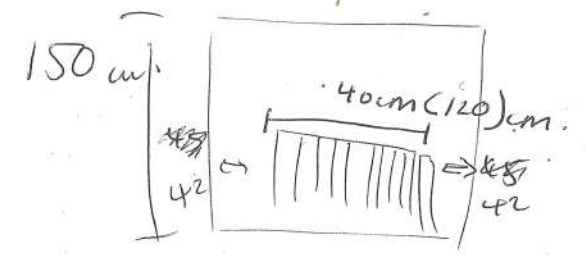
Back

use
under
neat





KIT FABRIC USAGE



Fabric I have

6mms



90cm

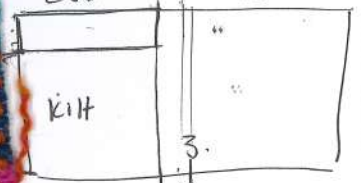
6mms

90 + 90

180cm

USABLE - 250cm

350cm



250

6mms

eikav 10x 4cm pleats = 120

20x 2cm pleats = 120

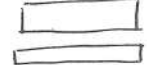
120cm (204 cm)

+ ~~120~~ 84 ((210cm) 45 (250) x 2

$$\frac{9.0}{1}$$

OR 1.75

250cm



1.75 I 90cm







BEFORE
PIETER
K.O.S.
2nd BFA





→ Recycled fishing rope from Dunbar

alloy suit
the pin holes

Round COLLAR

6



+ 1" top stretch pocket
on I LEG

pockets

large turn





